

MARBELLA - BENAHAVIS

# 14 BEDROOM FITNESS VILLA

14 Bedrooms | 34 Guests | 20 Bathrooms | 4.120 m<sup>2</sup> Plot | 1.117 m<sup>2</sup> Built





---

## ABOUT THE VILLA

Set within the rolling hills of Benahavís, west of Marbella, this expansive 14 bedroom private estate is conceived for wellness focused stays, active retreats, and large group gatherings in a discreet golf front setting.

The villa spans a 4,120 m<sup>2</sup> plot with 1,117 m<sup>2</sup> built, accommodating up to 34 guests across flexible bedroom layouts ideal for families, teams, or retreat participants sharing rooms.

Dedicated indoor gyms, outdoor spinning zones, adaptable yoga and training spaces, a full spa, and an on site juice bar support comprehensive fitness and wellbeing programs.

Wide, practical interiors and terraces allow seamless setups for retreats, events, and weddings, all framed by sweeping sea and mountain views. Beaches are reached in 7 minutes, Puerto Banus in 15, with easy access to El Paraíso golf courses.







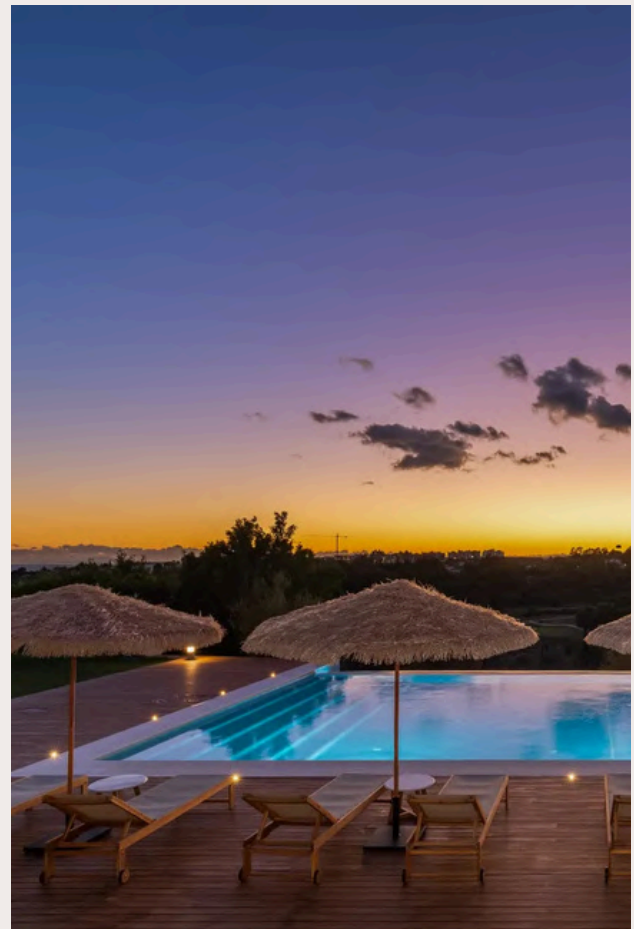
## OPEN GOLF, SEA AND MOUNTAIN VIEWS

Elevated terraces overlook the pool, gardens, and golf course, opening to distant sea and mountain views. Natural materials and open layouts create a calm, spacious setting for relaxed outdoor living and shared moments.





West facing terraces capture long afternoon light and uninterrupted sunset views, with the sky shifting from warm gold to deep blue over the pool and surrounding landscape.





A photograph of a modern interior space, likely a lounge or living area. The room features high ceilings and large, multi-paned windows that allow abundant natural light to enter. The furniture includes several armchairs and sofas in neutral tones, with some green velvet armchairs in the foreground. The walls are white, and there are decorative circular wall sconces. A large, curved sofa is visible on the right side of the frame. The overall atmosphere is bright and open.

## INTERCONNECTED INTERIOR SPACES

The interiors are arranged as a series of intimate lounges rather than one large living room. High ceilings, large windows, and abundant natural light create an open yet welcoming atmosphere, shaped by contemporary Mediterranean design and warm textures.





Distinct seating nooks encourage easy conversation and shared moments, with fluid indoor outdoor transitions creating a relaxed, social setting for families and groups.








# DUAL KITCHENS FOR SEAMLESS HOSTING



Two fully equipped kitchens allow the villa to operate smoothly during large gatherings and multi day programs. The layout supports parallel preparation, service efficiency, and the separation of different culinary requirements, making it ideal for events, retreats, and stays.





## PURPOSE BUILT FOR WELLNESS RETREATS

This villa is conceived as a complete wellness destination, offering the most extensive collection of wellbeing amenities found in any private villa in Marbella. Spaces are designed to support daily practice, recovery, and high performance retreats within a refined residential setting.





A full indoor spa includes a heated pool, sauna, steam room, and dedicated massage room, creating a calm, restorative environment for recovery and relaxation throughout the year.







Fitness facilities extend outdoors with a garden view gym, an upper level spinning studio suited to guided classes, a large multipurpose yoga room, and expansive outdoor areas ideal for movement, training, and group activities in open air surroundings.









## AN EVENT READY VILLA IN MARBELLA

Designed for flexibility and ease of operation, the villa suits a wide range of formats, from corporate retreats and incentives to private celebrations and multi day programs, with indoor and outdoor spaces that adapt easily to meetings, dining, wellness, and social formats.





Approximately 600 m<sup>2</sup> of flat garden space offers exceptional freedom for event production, supporting multiple setups such as ceremonies, dining areas, lounges, or installations within a single cohesive setting.







## 14 EN SUITE ROOMS FOR 34 GUESTS

The villa offers 14 bedrooms accommodating up to 34 guests across flexible layouts suited to families, groups, and shared stays. All rooms are en suite and many open onto private terraces, with outlooks over the sea, gardens, or surrounding mountains.





1.

## BEDROOM 1

**Location:** Main house  
**Floor:** Ground floor  
**Bed Size:** King size bed (180cm)  
**View:** Sea view  
**En-suite Bathroom:** Yes



2.

## BEDROOM 2

**Location:** Main house  
**Floor:** Ground floor  
**Bed Size:** King size bed (180cm)  
**View:** Sea view  
**En-suite Bathroom:** Yes





3.

### BEDROOM 3

**Location:** Main house  
**Floor:** Upper floor  
**Bed Size:** King size bed (180cm)  
**View:** Sea view  
**En-suite Bathroom:** Yes



4.

### BEDROOM 4

**Location:** Main house  
**Floor:** Upper floor  
**Bed Size:** King size bed (180cm)  
**View:** Sea view  
**En-suite Bathroom:** Yes





5.

## BEDROOM 5

**Location:** Main house  
**Floor:** Upper floor  
**Bed Size:** King size bed (180cm)  
**View:** Sea view  
**En-suite Bathroom:** Yes

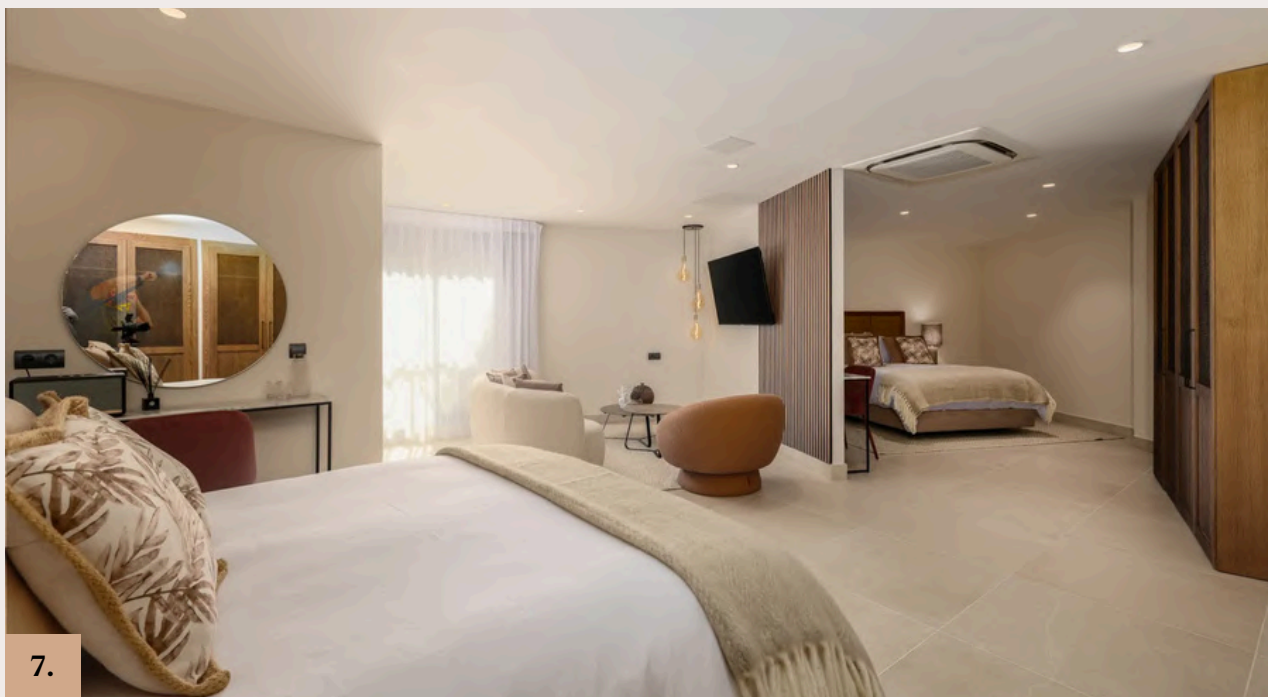


6.

## BEDROOM 6

**Location:** Main house  
**Floor:** Upper floor  
**Bed Size:** King size bed (180cm)  
**View:** Mountain view  
**En-suite Bathroom:** Yes





7.

## BEDROOM 7

**Location:** Main house

**Floor:** Lower floor

**Bed Size:** King size bed (180cm) x 2

**View:** Garden view

**En-suite Bathroom:** Yes



8.

## BEDROOM 8

**Location:** Main house

**Floor:** Lower floor

**Bed Size:** Single size bed (90cm) x 4

**View:** Garden view

**En-suite Bathroom:** Yes





9.

### BEDROOM 9

**Location:** Main house

**Floor:** Lower floor

**Bed Size:** Single size bed (90cm) x 4

**View:** Garden view

**En-suite Bathroom:** Yes



10.

### BEDROOM 10

**Location:** Studio

**Floor:** Lower floor

**Bed Size:** King size bed (180cm)

**View:** Garden view

**En-suite Bathroom:** Yes





11.

## BEDROOM 11

**Location:** Guest house  
**Floor:** Ground floor  
**Bed Size:** King size bed (180cm)  
**View:** Garden view  
**En-suite Bathroom:** Yes



12.

## BEDROOM 12

**Location:** Guest house  
**Floor:** Ground floor  
**Bed Size:** King size bed (180cm)  
**View:** Garden view  
**En-suite Bathroom:** Yes





13.

### BEDROOM 13

**Location:** Guest house  
**Floor:** Ground floor  
**Bed Size:** King size bed (180cm)  
**View:** Garden view  
**En-suite Bathroom:** Yes



14.

### BEDROOM 14

**Location:** Guest house  
**Floor:** Ground floor  
**Bed Size:** King size bed (180cm)  
**View:** Garden view  
**En-suite Bathroom:** Yes

---

# AMENITIES



## POOLS & OUTDOOR LIVING

Infinity outdoor swimming pool.

Rooftop terrace with sunset lounges and outdoor cinema.

## WELLNESS & RELAXATION

Private spa with heated indoor pool, sauna, steam room, rain shower, and massage rooms.

Large yoga and meditation studio.

Indoor Technogym fitness room.

Rooftop spinning terrace with instructor setup.

Outdoor training zones and garden view gym.

Dedicated juice bar with preparation kitchen.

## LIVING & DINING

14 en suite guest bedrooms sleeping up to 34 guests, plus staff apartment.

Professional show kitchen with cold storage, plus guest kitchen.

Indoor and outdoor dining spaces.

## EVENTS & ENTERTAINMENT

Approx. 600 m<sup>2</sup> of flat garden space for flexible event setups.

Indoor and outdoor sound systems.

Rooftop cinema and communal seating areas.

## ESTATE & SERVICES

Large service areas, staff quarters, and generous storage for multi day programs.

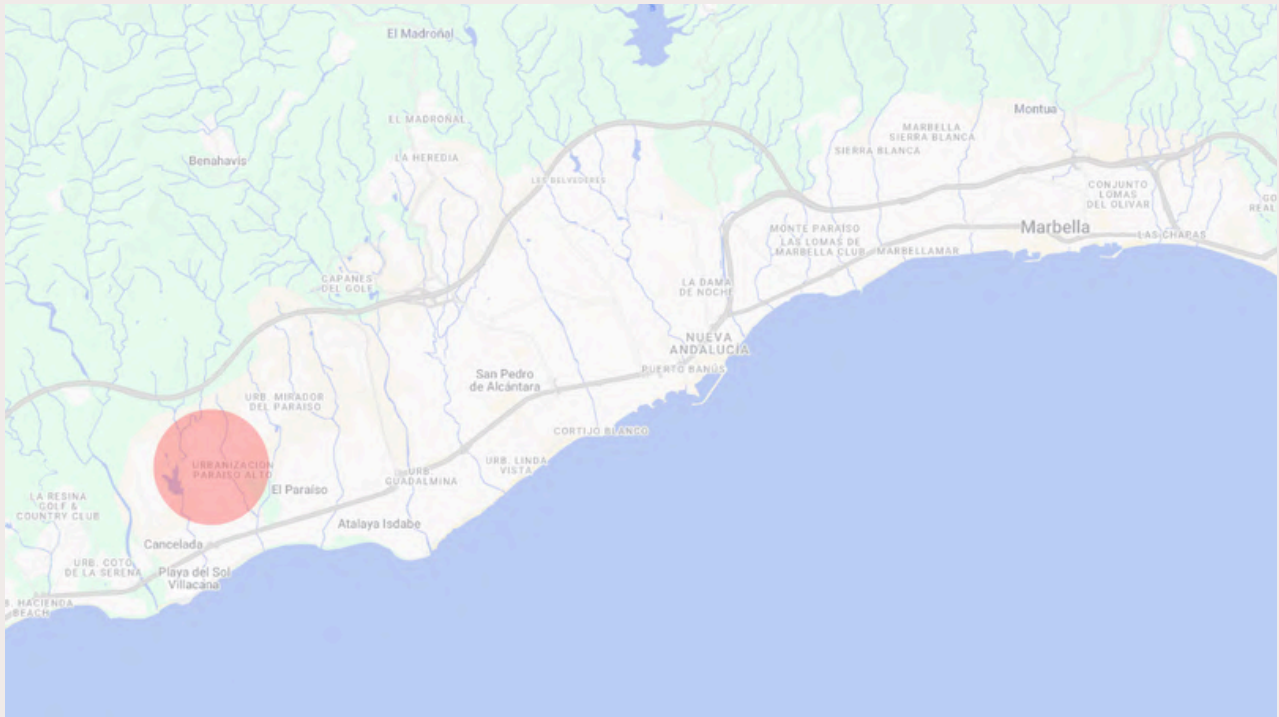
Ideal logistics for event teams, brand activations, and VIP arrivals.

Private parking and controlled access for secure and discreet stays.



---

# LOCATION



The villa is set in Benahavís, to the west of Marbella, within a prestigious golf-front residential area known for privacy, open landscapes, and elevated views.

This privileged location combines seclusion with excellent access to the Costa del Sol's leading destinations. Villa Padierna, Los Flamingos, and Marbella Club Golf Resort are all nearby, while Valderrama Golf is reached in approximately 35 minutes. Beaches and coastal amenities are a short drive away, with Marbella and Puerto Banús easily accessible.

Nearest airports: Málaga Airport 67 km (approx. 50 min drive), Gibraltar Airport 56 km (approx. 1 h drive).

