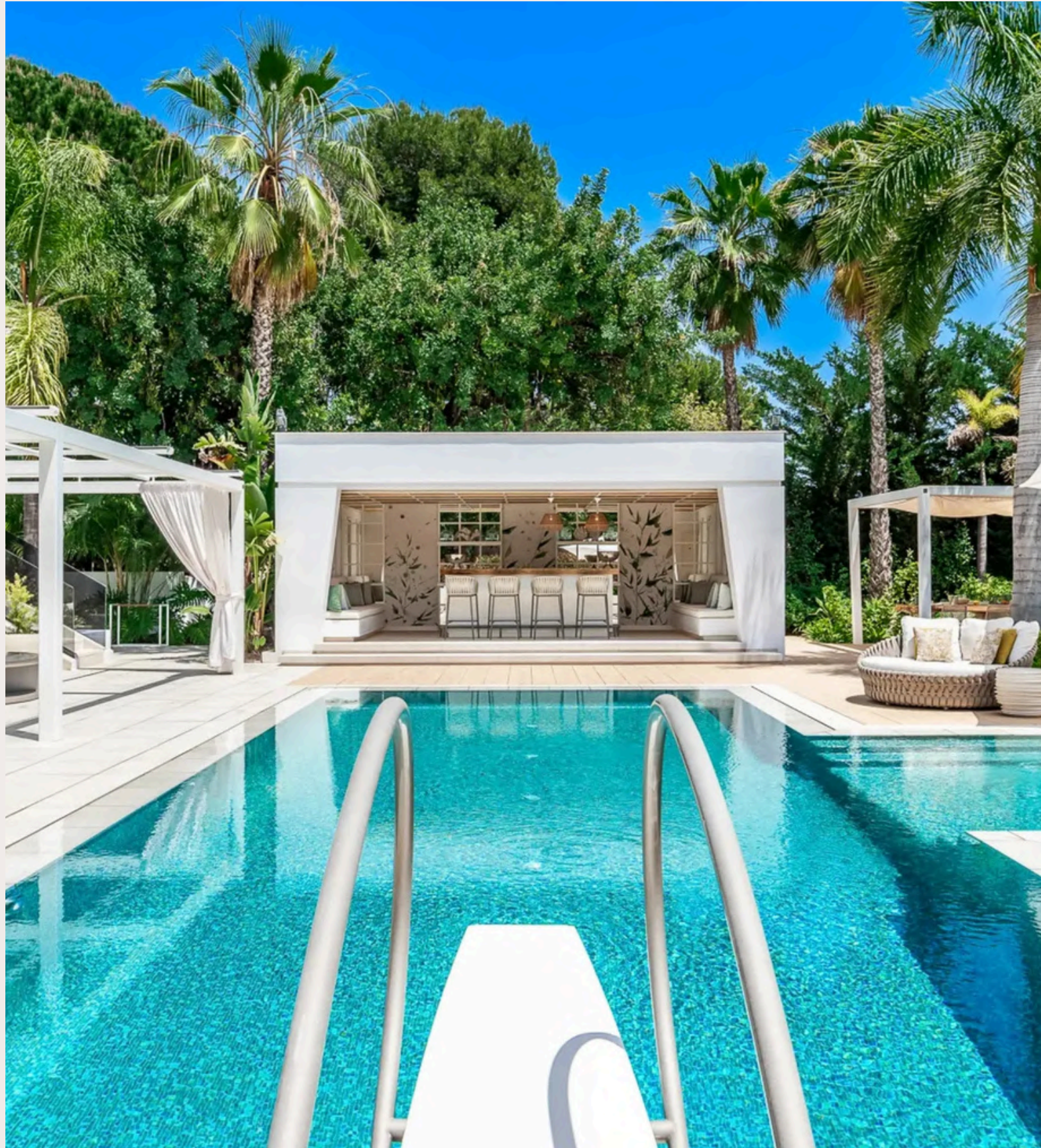


MARBELLA - CASCADA DE CAMOJAN

# 7 BEDROOM ULTRA MODERN VILLA

7 Bedrooms | 14 Guests | 9 Bathrooms | Plot 5.302 m<sup>2</sup> | Built 1.100 m<sup>2</sup>





---

## ABOUT THE VILLA

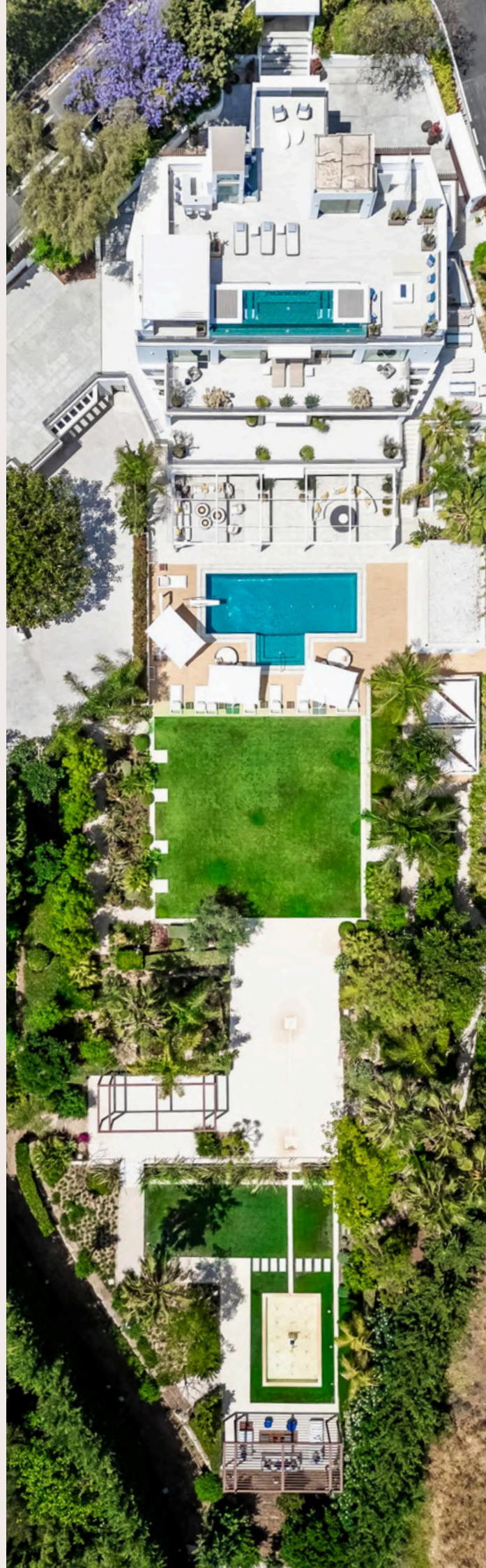
Framed by sea views and landscaped gardens, this villa is a contemporary Mediterranean retreat defined by privacy and understated elegance. Set above Marbella's coastline, it offers a calm and inviting sense of space.

With over 1,000 m<sup>2</sup> of interiors, the villa features generous living areas, panoramic terraces, and a smooth indoor outdoor flow. Natural tones and clean lines create an atmosphere of clarity and comfort.

7 guest suites accommodate up to 14 guests across three levels, with upper floor sea views, a main floor garden suite, and lower level rooms opening to the pool, patio, and wellness areas.

Amenities include a heated pool, gym, sauna, and multiple spaces for dining and relaxation. Sheltered terraces extend the living areas throughout the day.

Ideal for family stays or discreet retreats, this home blends scenic views with thoughtful design, offering a harmonious and private setting in Marbella.





A photograph of a modern outdoor pool area. In the foreground, a clear blue swimming pool is visible. To the right of the pool, there are several white lounge chairs and a round white daybed with green and white cushions. In the background, a white rectangular pavilion with a white canopy houses a dining table and chairs. Tall palm trees and lush greenery surround the area, creating a tropical atmosphere. The sky is a soft, warm color, suggesting late afternoon or early morning light.

## THE HEART OF OUTDOOR LIVING

The pool is the villa's social centerpiece, framed by sunbeds, loungers, and shaded sofas for relaxed living. Nearby, a private gym and pool bar complete the scene for days in the sun and evenings by the water.







# LANDSCAPED ELEGANCE IN MARBELLA'S HILLS



Set within 5,300 m<sup>2</sup> of manicured gardens, the estate blends contemporary design with nature. Expansive lawns, sculptural greenery, and calm water features create a setting of balance and refinement.





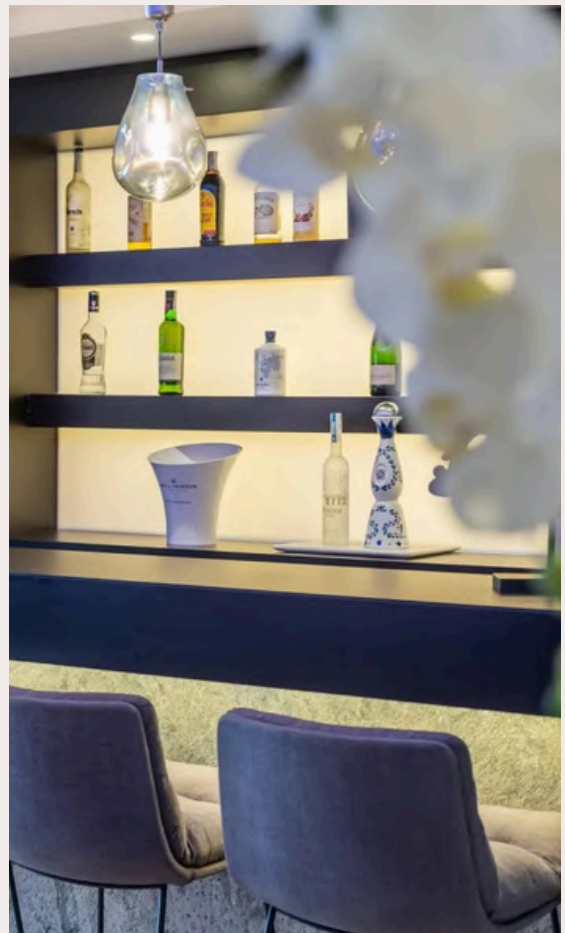


## LUXURY INTERIOR DESIGN ELEVATED

Created by acclaimed interior designer Pedro Peña, the interiors blend contemporary elegance and Mediterranean warmth. Natural textures, soft tones and sculptural furnishings shape a refined, inviting atmosphere throughout.









A photograph of an outdoor dining table set for a meal. The table is made of light-colored wood and is set with white ceramic bowls, plates, and glasses. Several glasses are wrapped in textured, light blue or green sleeves. There are lemons and small purple flowers as centerpieces. The background is a lush garden with tall palm trees and other greenery under a clear blue sky. A wicker chair is visible in the foreground on the left.

## AL FRESCO DINING IN STYLE

Three distinct outdoor dining areas—the terrace, poolside, and rooftop lounge—invite guests to gather over elegant meals and sea views. From leisurely lunches to private chef dinners under the stars, each setting captures the essence of Mediterranean living.



## AN INTIMATE VENUE FOR RETREATS & GATHERINGS



The villa is designed for discreet, high-profile retreats. Numerous lounge and seating areas provide settings supported by exceptional amenities, ideal for executive retreats, wellness escapes, and golf holidays in Marbella.





# ROOFTOP LOUNGE & JACUZZI WITH PANORAMIC SEA VIEWS

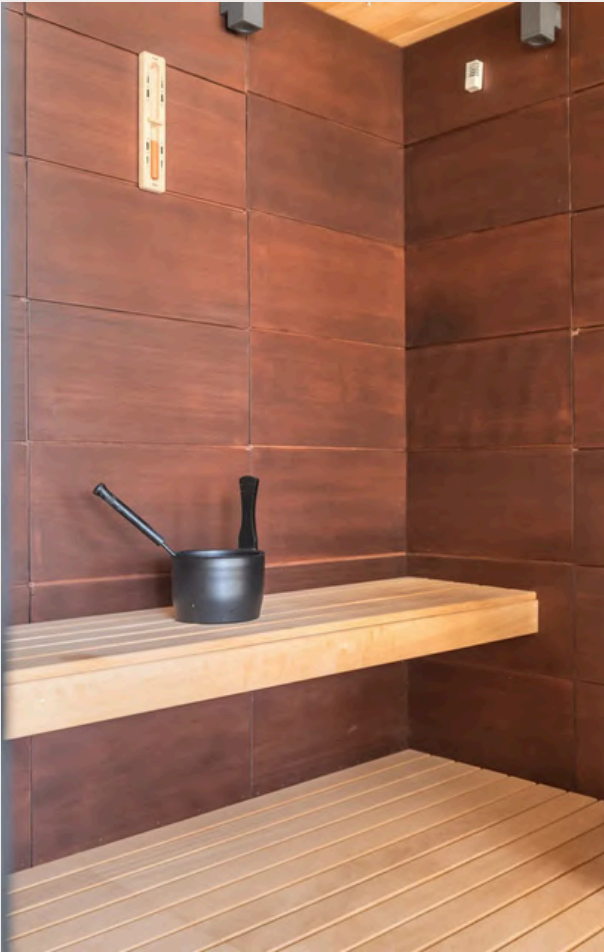


The rooftop lounge offers panoramic views, sun loungers, and a jacuzzi for relaxation, with an outdoor kitchen and dining area for open-air meals, and a fireplace for unwinding under the stars.





## PRIVATE GYM & WELLNESS SPA



The villa features a private gym beside the heated indoor pool and sauna, creating a premium wellness area with garden views. Ideal for wellness retreats or golf holidays in Marbella, it offers top-tier equipment and a calm space for training and relaxation.







## 7 DESIGNER-STYLED BEDROOMS

Each bedroom reflects the villa's refined aesthetic, with soft textures and warm tones. The four principal suites on the upper floor open to terraces with sea views, filling the rooms with natural light and a serene coastal atmosphere.





1.

### BEDROOM 1

**Location:** Main House  
**Floor:** Upper Floor  
**Bed Size:** King Size bed (200cm)  
**View:** Sea View  
**Surface:** 69 sqm  
**En-suite Bathroom:** Yes  
**Walk-in Closet:** Yes



2.

### BEDROOM 2

**Location:** Main House  
**Floor:** Upper Floor  
**Bed Size:** Queen Size bed (180cm)  
**View:** Sea View  
**Surface:** 45 sqm  
**En-suite Bathroom:** Yes  
**Walk-in Closet:** No





3.

### BEDROOM 3

**Location:** Main House  
**Floor:** Upper Floor  
**Bed Size:** Queen Size bed (180cm)  
**View:** Sea View  
**Surface:** 55 sqm  
**En-suite Bathroom:** Yes  
**Walk-in Closet:** Yes



4.

### BEDROOM 4

**Location:** Main House  
**Floor:** Ground Floor  
**Bed Size:** Queen Size bed (180cm)  
**View:** Garden View  
**Surface:** 56 sqm  
**En-suite Bathroom:** Yes  
**Walk-in Closet:** No





5.

### BEDROOM 5

Location: Main House  
 Floor: Garden Floor  
 Bed Size: Queen Size bed (180cm)  
 View: Garden View  
 Surface: 50 sqm  
 En-suite Bathroom: Yes  
 Walk-in Closet: Yes



6.

### BEDROOM 6

Location: Main House  
 Floor: Garden Floor  
 Bed Size: Queen Size bed (180cm)  
 View: Garden View  
 Surface: 25 sqm  
 En-suite Bathroom: Yes  
 Walk-in Closet: No





7.

### BEDROOM 7

**Location:** Main House  
**Floor:** Garden Floor  
**Bed Size:** Queen Size bed (180cm)  
**View:** Garden View  
**Surface:** 43 sqm  
**En-suite Bathroom:** Yes  
**Walk-in Closet:** No

BEDROOM	LOCATION	FLOOR	BED SIZE	SQM.	DETAILS
Bedroom #1	Main House	Upper Floor	King Size (200cm)	69	The master suite, exceptionally spacious with panoramic sea views.
Bedroom #2	Main House	Upper Floor	Queen Size (180cm)	45	Large upper floor suite with sea views, ideal for family or accompanying guests.
Bedroom #3	Main House	Upper Floor	Queen Size (180cm)	55	Generous upper floor bedroom with sea views and comfortable proportions.
Bedroom #4	Main House	Main Floor	Queen Size (180cm)	56	Convenient main floor bedroom with serene garden views.
Bedroom #5	Main House	Garden Floor	Queen Size (180cm)	50	Garden floor suite with direct access to the pool area and wellness amenities.
Bedroom #6	Main House	Garden Floor	Queen Size (180cm)	25	Garden floor bedroom opening to an English patio, ideal for quiet and privacy.
Bedroom #7	Main House	Garden Floor	Queen Size (180cm)	43	Garden floor suite with direct access to the pool area and wellness amenities.



---

# AMENITIES



## POOLS & OUTDOOR LIVING

Outdoor swimming pool  
Large al fresco dining areas and BBQ zones  
Rooftop lounge with jacuzzi, sundeck, and dining space

## WELLNESS & RELAXATION

Fully equipped gym  
Heated indoor pool and sauna  
Fine-tuned piano plus drums and guitars  
Elegant spaces for leisure and entertainment

## IN-ROOM COMFORTS & SECURITY

Air conditioning in every room and heated floors throughout  
Flat-screen TV in each bedroom  
High-speed Wi-Fi and premium sound system  
Integrated fire and smoke alarm system plus intruder alarm

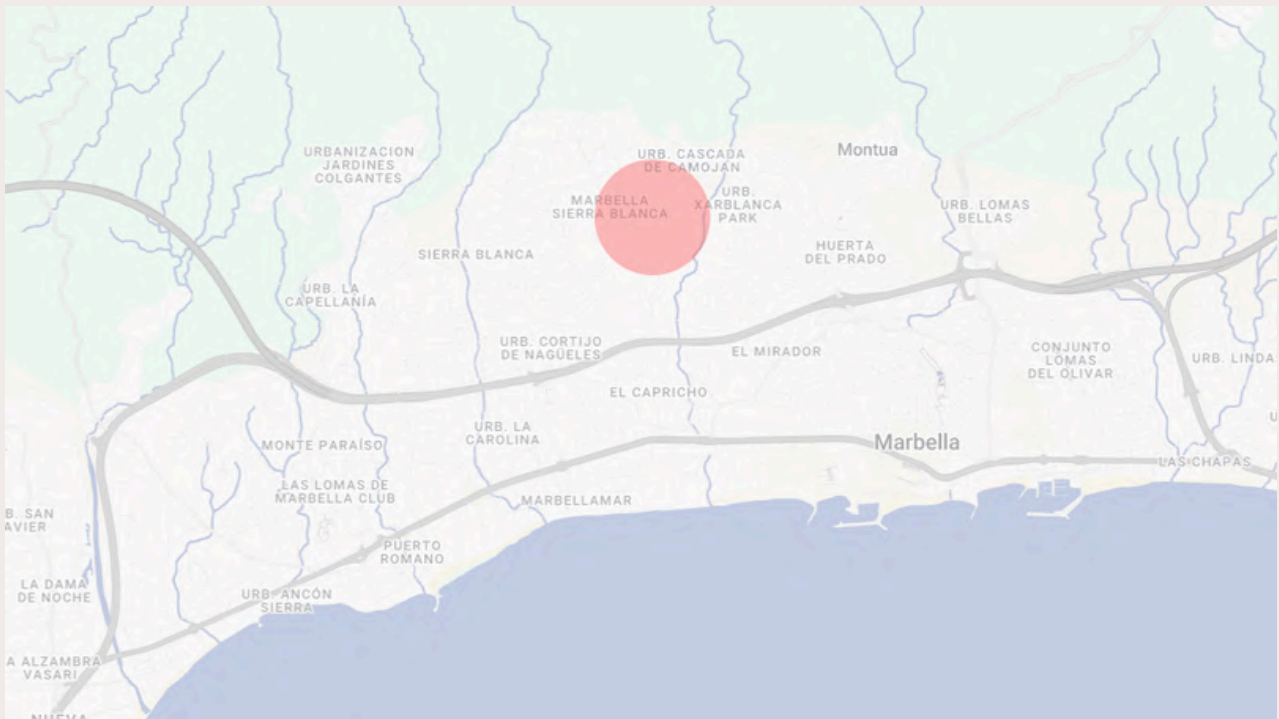
## ESTATE & SERVICES

5,300 m<sup>2</sup> plot | 1,100 m<sup>2</sup> built  
Spacious on-site parking for 6+ vehicles  
Fully equipped designer kitchen  
Daily housekeeping  
Weekly linen change



---

# LOCATION



Set within the gated community of Cascada de Camoján, next to Sierra Blanca, this hillside estate offers privacy and serenity just minutes from Marbella's Golden Mile. Its prime location places it close to the Marbella Club, Puerto Romano, and the city's finest restaurants and boutiques.

With direct access to the highway, the property connects easily to Puerto Banús (8 km; 10 min drive) and the leading golf courses both west and east of Marbella.

Nearest airports: Malaga 54 km (40 min drive), Gibraltar 77 km (1 h drive).



