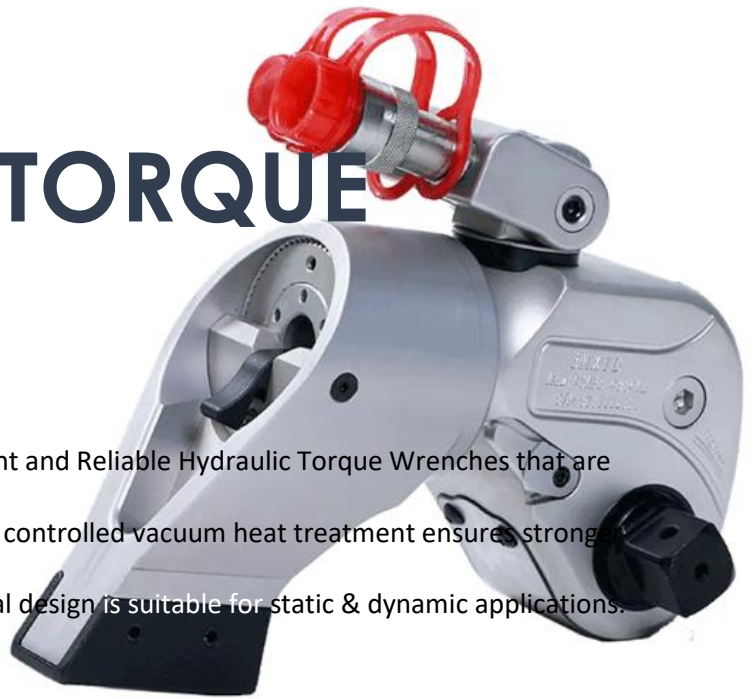


HYDRAULIC TORQUE WRENCH

Zeal India manufactures Simple, Faster, Efficient and Reliable Hydraulic Torque Wrenches that are user friendly. The high strength alloy steel and controlled vacuum heat treatment ensures strong drive components. Improved high pressure seal design is suitable for static & dynamic applications.



There are –

- Provision for lifting tools / handle
- Standard spline design with torque effective length for exact PCD engagement of reaction Arm
- High strength aerospace aluminium material for light weight and stronger body design
- Scratch proof hard anodized body and reaction arm



ZSD SERIES SQUARE DRIVE TORQUE WRENCHES

- QUICK PUSH THROUGH DRIVE FOR EASE OF LOOSENING AND TIGHTENING
- FINE RATCHET AND PAWL FOR BETTER ENGAGEMENT
- MULTI TOOTH DRIVE SEGMENT ENSURES UPTO 32°
- BALANCE DRIVE ROD - SIDE LOAD FREE PISTON MOVEMENT
- LASER ENGRAVED TORQUE CHART (NM & FT LBS)
- HARD CHROME PLATING OF PISTON ROD WHICH ENSURES BETTER WEAR RESISTANCE OF ROD SEAL.
- SELF LUBRICATING LOW NICKEL BRONZE DRIVE BUSH TO PROTECT BODY FROM WEAR
- 360° X 180° SWIVEL FOR BETTER DEGREE OF MOVEMENT
- LEAK PROOF QUICK CONNECT COUPLERS FOR EASY & SAFE OPERATION
- END-CAP DESIGN FOR SUFFICIENT BACK PRESSURE FOR SMOOTH PISTON FORWARD FORCE
- RIGID REACTION SUITABLE FOR HEAVY LOAD APPLICATION
- SIMPLE DESIGN REACTION ARM RELEASE BUTTON FOR EASE OF OPERATIONS
- ALLOY STEEL REACTION BOOT (AVAILABLE IN MULTI-COLOR OPTION)
- COLD WORKED CYLINDER BORE FOR LONGER LIFE AND SUPER FINISH FOR LONG WORKING CONDITIONS.

ZSD SERIES SQUARE DRIVE TORQUE WRENCHES

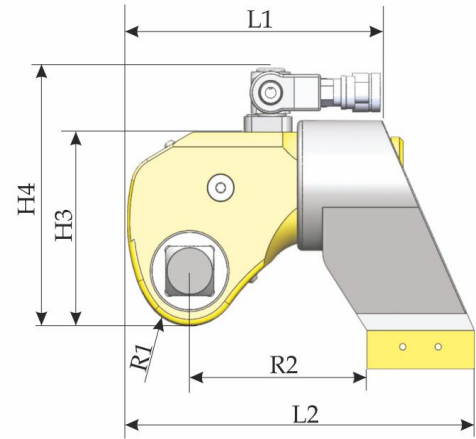
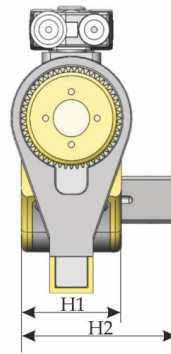
FEATURES

THE HYDRAULIC TORQUE WRENCHES WITH SQUARE DRIVES MADE BY ZEAL INDIA ARE RELIABLE, PROVIDE OPTIMUM TORQUEING POWER AND ARE DESIGNED TO EXERT TORQUE ON THE TOUGHEST NUTS WITH THE FOLLOWING FEATURES:

- HIGH NICKEL ALLOY STEEL INTERNAL COMPONENTS ENSURE LONG LASTING MOVING PARTS.
- THE ROD ENGAGES IN THE FIRST STROKE THUS REMOVING ANY BACKLASH.
- THE HYDRAULIC TORQUE WRENCHES USE AN ALLOY STEEL HIGH STRENGTH HYDRAULIC CYLINDER DESIGNED TO EXERT A TORQUE AS PER APPLICATION.
- THE RATCHET AND PAWL HAVE A FINER TOOTH FOR BETTER ENGAGEMENT AND TORQUEING.
- THE QUICK CONNECTORS FOR THE HYDRAULIC LINES ARE LEAK-RESISTANT FOR SAFETY EVEN UNDER PRESSURE. THIS IS AN INDUSTRY STANDARD FEATURE OF THE ZEAL INDIA HYDRAULIC TORQUE WRENCH.

	Metric	Imperial
Minimum Torque:	112 Nm	81 Ft. Lbs.
Maximum Torque:	69427 Nm	50300 Ft. Lbs.
Minimum Weight:	1.8 Kgs	3.9 Ft. Lbs.
Maximum Weight:	65 Kgs	143 Ft. Lbs.
Minimum Pressure:	70 Bar	1000 PSI
Maximum Pressure:	700 Bar	10000 PSI
Sizes of Square Drives available:	19.05 mm to 63.5 mm	0.75 Inch to 2.50 Inch

ZSD SERIES SQUARE DRIVE TORQUE WRENCHES



Technical Data		ZSD-07	ZSD-1	ZSD-3	ZSD-5	ZSD-8	ZSD-10	ZSD-15	ZSD-20	ZSD-25	ZSD-35	ZSD-50
	Sq. Dr.	3/4"	3/4"	1"	1.1/2"	1.1/2"	1.1/2"	2.1/2"	2.1/2"	2.1/2"	2.1/2"	2.1/2"
Min. Torque	Nm (Ft. Lbs.)	112 -81	183 -134	450 -328	737 -536	1078 -783	1551 -1054	2243 -1654	2719 -1976	3472 -2523	4866 -3535	6925 -5030
Max. Torque	Nm (Ft. Lbs.)	1120 -814	1837 -1344	4500 -3278	7379 -5361	10780 -7831	15519 -10540	23201 -16547	27197 -19757	34725 -25226	48666 -35354	69247 -50300
Tool Weight	Kg. (Lbs.)	1.8 -3.9	2.5 -5.5	4.9 -10.8	9.5 -20.9	10.8 -23.8	14.7 -32.4	23 -50.7	26 -57.3	35 -77.1	50 -110.2	65 -143.3

DIMENSIONAL DATA

	ZSD-07	ZSD-1	ZSD-3	ZSD-5	ZSD-8	ZSD-10	ZSD-15	ZSD-20	ZSD-25	ZSD-35	ZSD-50
Body Length (L1)	110	144.5	178	213	222	246	275	307	321	361	380
Overall Length (L2)	139	173	228	274.5	292	317	350	385	401	465	518
Tool Width (H1)	42	52	69.5	82.5	92	102	111	128	120	153	167
Overall Width (H2)	65	75	94	128.5	134	142	176	185	200	216	229
Tool Height (H3)	77	95.5	115	149	167	182	195	220	246	282	301
Overall Height (H4)	108	136	176	199	217	232	241	270	297	332	348
Tool Radius (R1)	21	26.3	34.5	39	47	51	57.5	59	66	77	80.5
Reaction Reach (R2)	68	85	111.5	140	153	154	170	186	199	241	258