

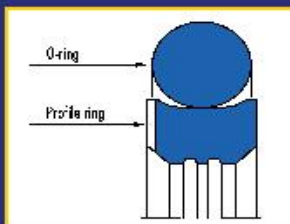


PT. MEGADAYA MAJU SELARAS

Energy Material Supplies & Trading Co.



**The Competent Source in
Sealing Element and
Engineering Services**





PT Megadaya Maju Selaras
Energy Material Supplies & Trading Co.



PT. MEGADAYA MAJU SELARAS

OFFICE

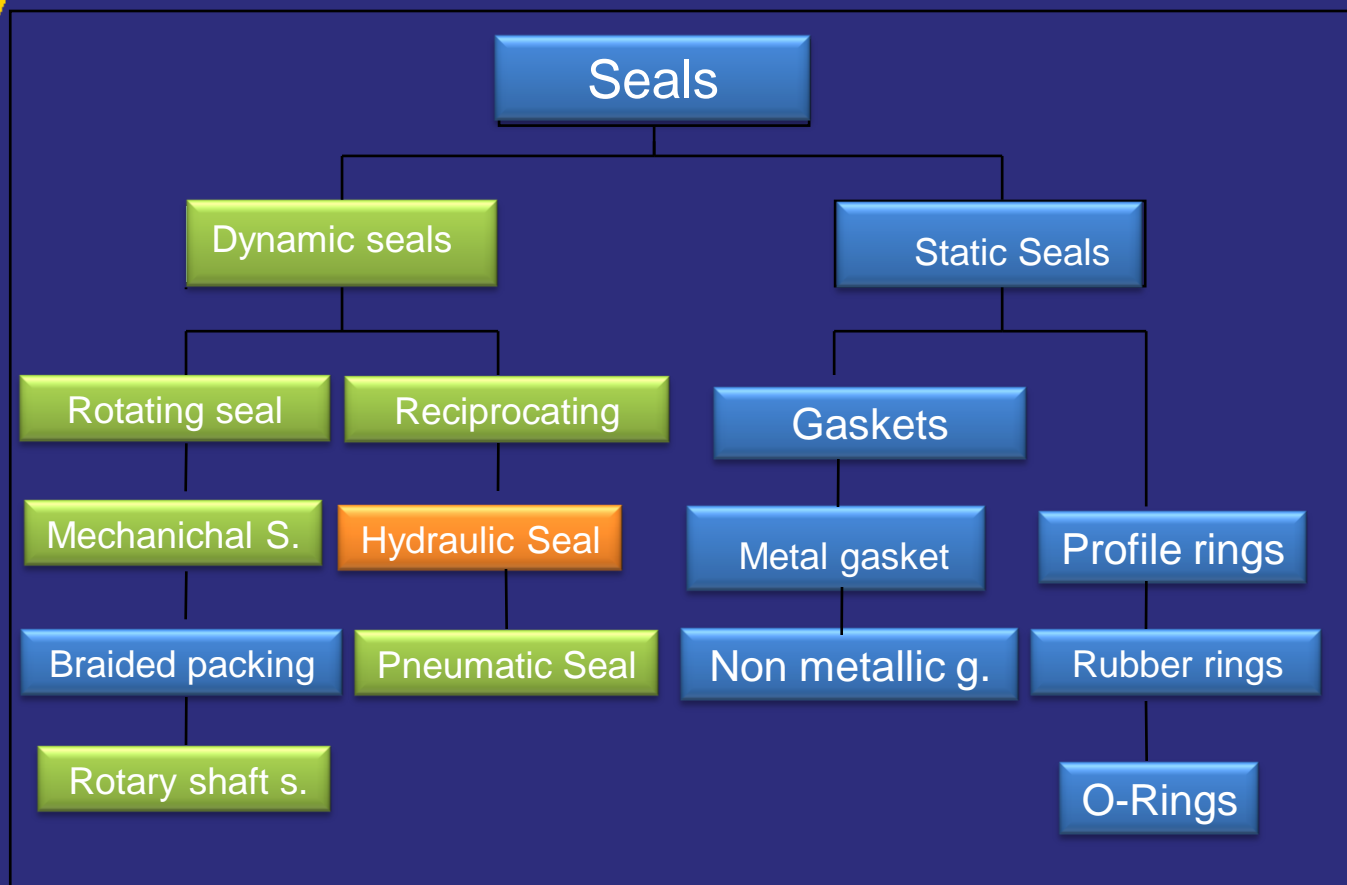
Jl Delima V Blok E. No. 137. Rambutan, Kec. Ciracas, Jak-Tim 13830
Telp/Fax : 021-77783304 Hp: 085772511157

WORKSHOP

Jl. Raya Narogong KM. 11,5
Bantar Gebang - Bekasi

Specialize in sealing element, rubber product customize
hydraulic, pneumatic, valve, hardchrome plating, metal coating
Dies, manufacture part & engineering service

Sealing element



Specialize in sealing element, rubber product customize
hydraulic, pneumatic, valve, hardchrome plating, metal coating
Dies, manufacture part & engineering service

Mechanical Seal



*Make new & Reckondis
Mechanical seal
all brand & type*



Specialize in sealing element, rubber product customize
hydraulic, pneumatic, valve, hardchrome plating, metal coating
Dies, manufacture part & engineering service

Rubber Product



RUBBER BELLOWS



*Tool Jjig For Drilling
Oil Company
Made From Poly Urethan*



MEMBRANE/DIAPHRAGM



Seal kit

Specialize in sealing element, rubber product customize
hydraulic, pneumatic, valve, hardchrome plating, metal coating
Dies, manufacture part & engineering service

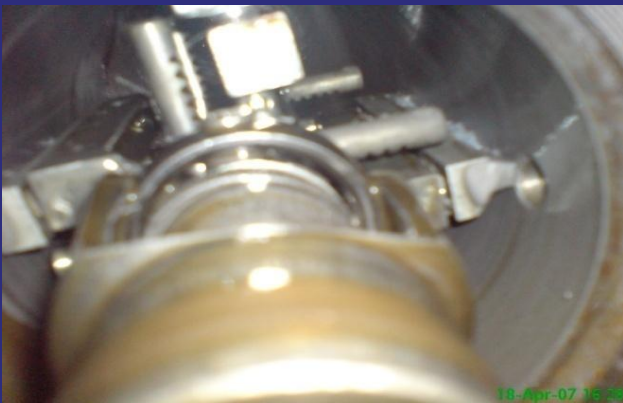
Manufacture



Mesin Bubut



Mesin Gerinda Silinder



Mesin Honning



Mesin NC Milling

Specialize in sealing element, rubber product customize
hydraulic, pneumatic, valve, hardchrome plating, metal coating
Dies, manufacture part & engineering service

Manufacture



Mesin NC Milling



Mesin Boring



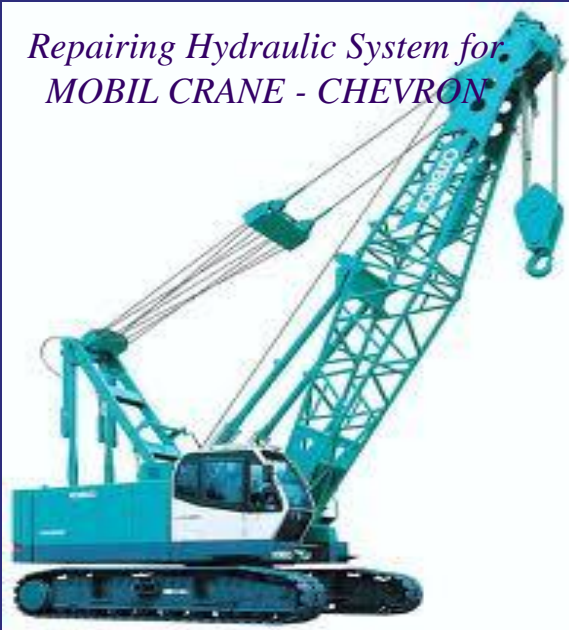
Mesin Hidrolik Power pack

Specialize in sealing element, rubber product customize
hydraulic, pneumatic, valve, hardchrome plating, metal coating
Dies, manufacture part & engineering service

Repairing Heavy Equipment



Repairing Hydraulic System for MOBIL CRANE - CHEVRON



Specialize in sealing element, rubber product customize
hydraulic, pneumatic, valve, hardchrome plating, metal coating
Dies, manufacture part & engineering service

Hard Chrome Plating



*Benda Kerja Yang Rusak
"Scratch"*



*Setelah Process Hard Chrome
"Mengkilat, Halus, Kekerasan
permukaan s/d 60 HRC"*

Specialize in sealing element, rubber product customize
hydraulic, pneumatic, valve, hardchrome platting, metal coating
Dies, manufacture part & engineering service

PROSESSES HARD CHROME PLATTING



Stripping proses



Mesin Polessing



Chrome area

Specialize in sealing element, rubber product customize
hydraulic, pneumatic, valve, hardchrome plating, metal coating
Dies, manufacture part & engineering service

Honning



*Tabung Silinder Yang
Rusak
"Scratch, Corrosive"*

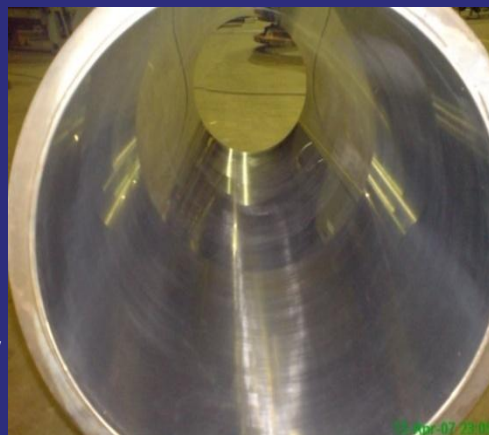
BEFORE



18 Apr 07 15:30

AFTER

honning
*"mengkilat dan
permukaan halus
kembali"*

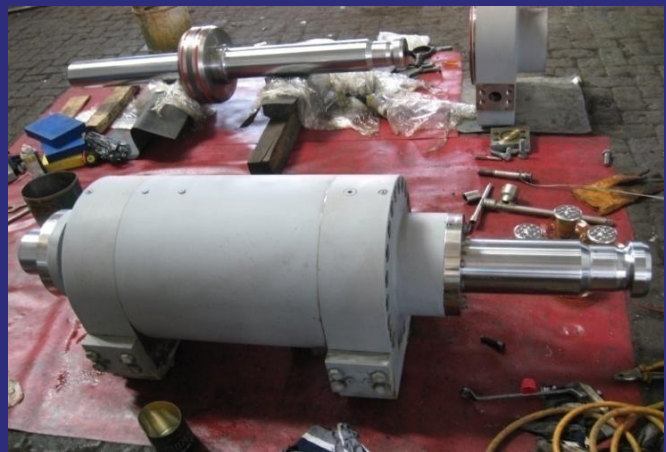


18 Apr 07 15:30

Specialize in sealing element, rubber product customize
hydraulic, pneumatic, valve, hardchrome plating, metal coating
Dies, manufacture part & engineering service



Repair Hydraulic & Assembling



Specialize in sealing element, rubber product customize
hydraulic, pneumatic, valve, hardchrome plating, metal coating
Dies, manufacture part & engineering service



*POWER PACK FOR
HYDROULIC TEST*



Contoh Pengetesan Hidrolik

MECH. SEAL SIZES, APPLICATION AND TEMPERATURE



YKM UE-1000 Series

Multi Spring Mechanical Seal

These are very commonly used Mechanical Seals for clear liquids in most of equipments. Multi-Spring design has many springs put uniform force over the faces hence increase its life. Multi-Spring Seals are unitized, compact, simple & easy to install.

These are Bi-directional Pusher type Mechanical Seals suitable to all type of elastomers. Such Mechanical Seals are available in Un-balance design for low pressure and Balance design for high pressure applications.



YKM UE-1000-LD Series

These Seals can be designed in Double configuration for toxic, hazardous, costly & volatile liquids. We can offer Double Seals in Back to Back as well as Tandem arrangement as per application. Most of components are interchangeable, hence it proves economical and easy to maintain.

We have variety of shapes & designs in this category.

Application:

Clear, Lubricating & Non Corrosive Liquids.

Operating Limits :

Pressure : 7 bar for Un-balance & 40 bar for Balance Seals

Temperature : -30°C to 250°C

Speed : 20 m/s

Sizes : 12 mm to 200 mm



YKM UE-RO-Series

Materials :

Faces : Carbon, Silicon Carbide, Tungsten Carbide, Ceramic, Cr. Steel.

Elastomers : PTFE, Perfluoro, Viton, Aflas, EPDM, Nitrile, Silicon, Neoprene

Hardware : SS-316, Hastelloy-C, Alloy-20, Titanium



YKM Double Seal

Single Spring Mechanical Seals

These Mechanical Seals are having single spring design to take care contaminated liquids. Due to open coil spring, it is used for nonclogging and self-cleaning operations.

With sturdy and heavy long spring, it can take care of mis-alignment, vibrations, thermal expansions & axial play of shaft. These Seals can be offered in Un-balance as well as Balance design to take care variety of applications. These Mechanical Seals are economical and easy to install and maintain because of lesser components



YKM UE-ARO Series



YKM UE-1500-CL Series



YKM UE-1508 Series



YKM UE-1507 Series

Single Spring Mechanical Seals can be made for Uni or Bi-direction motion of shaft. We have great variety in this design to suit any applications.

Application :

Viscous, Abrasive, Crystallizing, Solidifying & Non-Corrosive Slurry.

Operating Limits :

Pressure : 7 bar for Un-balance & 40 bar for Balance Seals

Temperature : -30°C to 250°C

Speed : 20 m/s

Sizes : 12 mm to 200 mm

Materials :

Faces : Carbon, Silicon Carbide, Tungsten Carbide, Ceramic, Cr. Steel.

Elastomers : PTFE, Perfluoro, Viton, Aflas, EPDM, Nitrile, Silicon

Hardware : SS-316, Hastelloy-C, Alloy-20, Titanium

Elastomer Bellow Mechanical Seals



YKM UE-502 Series



YKM UE-EB Series (MG9)



YKM UE-MG L Series (MG12)



YKM UE-MG Series (MG1)



YKM UE-MG-CL Series

Elastomer Bellow Mechanical Seals :

These Mechanical Seals are most common and low priced used for simple and non-critical applications. It is having single spring for non-clogging, self cleaning operation and bellow for self alignment in case of axial and radial play in shaft..

There are lot of designs and shapes available in this series to accommodate in almost all type of stuffing box. This series is available in Metric as well as British standard sizes. It finds great usage in light applications like Water, Milk, Juice, Coolants etc

Elastomeric bellow Seals Can be designed as per dimension of stuffing box. Length and Diameter can be adjusted to fit any type cavity therefore it find usage in wide variety of Equipment . We can Develop these seals in various other designs too.

Application :

Clear, Lubricating & Non-corrosive liquid

Operating Limits :

Pressure : 10 bar

Temperature : -20°C to 200°C

Speed : 20 m/s

Sizes : 12 mm to 150 mm

Materials :

Faces : Carbon, Silicon Carbide, Tungsten Carbide, Ceramic, Cr. Steel.

Elastomers : Viton, Aflas, EPDM, Nitrile, Silicon, Neoprene

Conical Spring Mechanical Seals Manufacturers



YKM UE-CRO-P Series



YKM UE-CRO-CL Series



YKM UE-CRO-W Series



YKM UE-CRO-MG Series

Conical Spring Mechanical Seal:

Conical Spring Mechanical Seals are very simple and compact for use in small housings. It has taper Spring of various type and dimension to suit lot of media. These are most common, low rate and widely used Seals made in bulk quantity.

Due to single spring design, it can be used for clear and viscous liquids in Gear, Monoblock & Non Standard Pumps having small stuffing box. Conical Spring Mechanical Seals are offered in Metric as well as British standards.

These are compact and space oriented Mechanical Seals hence can be modified in lot of shapes suiting to any size of stuffing box. Conical Spring Seal Can be designed as per dimension of stuffing box.

Length and Diameter can be adjusted to fit any type of Cavity therefore it find usage in Wide variety of Equipment. We can develop these seals in various other designs too.

Application:

Water, Clear & Light Slurry liquids, Mild chemicals.

Operating Limits:

Pressure : 10 bar

Temperature : -20°C to 250°C

Speed : 20 m/s

Sizes : 12 mm to 200 mm

Materials :

Faces : Carbon, Silicon Carbide, Tungsten Carbide, Ceramic, Cr. Steel.

Elastomers : Viton, Aflas, EPDM, Nitrile, Silicon, FEP, Neoprene

Hardware : SS-316

Cartridge Mechanical Seals Manufacturers



YKM UE-CS-01 Series



YKM UE-CRO-02 Series

Cartridge Mechanical Seals:

These Seals are Pre-assembled and ready to install on any type of liquids. Such Seals do not require adjustment in fitting due to pre-assembly hence avoid installation problem.

Cartridge Mechanical Seals are balanced and designed in such a way to avoid liquid contact with spring therefore find usage in almost all type of media. Such Seals can be designed with Multi Spring, Single Spring, Wave Spring or Metal Bellow hence offered in great variety.

Cartridge can be designed with Single or Double Seal configuration as per application. It is having Pre-assembled Mechanical Seal with integral Sleeve and Gland Plate, hence easy in installation and maintenance.

Cartridge Mechanical Seals are universal in nature and available in lot of shapes & designs to suit all type of housings and media.

MECH. SEAL SIZES, APPLICATION AND TEMPERATURE



YKM UE-CRO-03 Series



YKM UE-CRO-04 Series

Application :
Viscous, Abrasive, Crystallizing, Solidifying & Slurries.

Operating Limits:

Pressure : 25 bar

Temperature : -50°C to 350°C

Speed : 20 m/s

Sizes : 20 mm to 150 mm

Materials :

Faces : Carbon, Silicon Carbide, Tungsten Carbide, Ceramic, Cr. Steel.

Elastomers : Viton, Aflas, FEP, Perflouro,

Hardware : SS-316, Hastelloy-C, Alloy-20, Titanium.

Teflon Bellow Mechanical Seals



YKM UE-TBR Series



YKM UE-TB Series

Teflon Bellow Mechanical Seals

These are external mounted Mechanical Seals inherently Balanced in nature. It's

special design avoids contact of metal parts from liquid therefore such Seals are most commonly used in all kind of Acids, Alkalies,

Strong Oxidising & Reducing agents. Such Seals can be designed in Multi Spring as well as Single Spring configuration.

Teflon Bellow Mechanical Seals can be offered in Composite or Replaceable face design. Usually it is offered in Glass Filled PTFE & Ceramic Faces but Silicon Carbide can be offered for contaminated liquids.

Application :
Acids, Alkalies & Corrosive liquids.

Operating Limits :

Pressure : 7 bar

Temperature : -20°C to 150°C

Speed : 15 m/s

Sizes : 16 mm to 125 mm

Materials :

Faces : Glass Filled PTFE, Silicon Carbide, Ceramic, CFT.

Elastomers : PTFE.

Hardware : SS-316, Hastelloy-C, Alloy-20, Monel, Hastelloy-B

MECH. SEAL SIZES, APPLICATION AND TEMPERATURE

Metal Bellow Mechanical Seals



YKM-UE-MB Series



YKM-UE-MB-HT Series

Metal Bellow Mechanical Seals

These Mechanical Seals are extremely useful in high temperature and other complicated services. Special welding process is used on rare materials to form highly accurate and precise Bellow hence it is expensive and used in ultimate services. These Mechanical Seals are Non-Pusher and Balanced in nature. Bellow is having self cleaning action and axial movement hence do not have dynamic elastomers which overcome several disc-advantages of Pusher Seals.

These are available in double configuration & cartridge assemblies too. It finds great usage in Hydrocarbon, Pulp & Paper, Steel, Mine & Power Industries. We have very long experience in reconditioning of Metal Bellow Seals.

Application :

High Temperature, Hydrocarbons & Critical Services.

Operating Limits:

Pressure : 25 bar

Temperature : -40°C to 350°C

Speed : 20 m/s

Sizes : 25 mm to 100 mm

Materials :

Faces : Carbon, Silicon Carbide, Tungsten Carbide.

Elastomers : Graphite, Perfluoro, FEP.

Hardware : SS-316, AM-350, Hastelloy-C, Alloy-20

Wave Spring Mechanical Seals



YKM-UE-H-Series (HJ)



YKM-UE-M-Series (M7N)

WAVE SPRING MECHANICAL SEALS :

These are Pusher Type Mechanical Seals having special Wave or Disc Spring which works well on contaminated liquids, hence preferred on Multi spring design . Such Seals are compact, robust & bi-directional to Use in clear as well as contaminated liquids. The Wave Spring Mechanical Seals can be offered in several designs in single or double & Un-balanced or Balance Configuration. Most Common are. UE-M Series Mechanical Seals : it is having loosely fitted face with 'O' Ring, hence easy to assemble . it find great use and very popular in industry. UE-H Series mechanical Seals : it is balanced Seal with lug drive. Wave Spring avoid liquid contact, hence it is very useful in viscous, contaminated liquids on High pressure.

Application :

Clear, Viscous, contaminated Liquids.

Operating Limits :

Pressure : 10 bar for Un-balance & 30 bar for Balance Seals

Temperature : -20°C to 250°C

Speed : 20 m/s

Sizes : 12 mm to 150 mm

Materials :

Faces : Carbon, Silicon Carbide, Tungsten Carbide, Cr. Steel.

MECH. SEAL SIZES, APPLICATION AND TEMPERATURE

Reverse Balance Mechanical Seals



YKM-UE-M-Series (M7N)

These are external mounted multi spring Mechanical Seals. Liquid pressure is used to close the Seal faces therefore very effective in high pressure and vacuum applications. UE-RB series Mechanical Seals are Balanced, Unitized, Compact & Simple to install & maintain. It can be extremely useful for contaminated and light corrosive liquids as metal parts do not come in contact with media. Such Mechanical Seals eliminate movement of elastomer hence reduce fretting effect on shaft greatly.

Application :

Clear, Contaminated Liquids at High Pressure & Vacuum.

Operating Limits :

Pressure : 25 bar.

Temperature : -30°C to 250°C.

Speed : 20 m/s

Sizes : 20 mm to 150 mm

Materials :

Faces : Carbon, Silicon Carbide, Tungsten Carbide, Ceramic.

Elastomers : Viton, Aflas, Silicon, FEP.

Hardware : SS-316

Cap Mechanical Seals Manufacturers



CAP MECHANICAL SEALS :

These mechanical Seals designed for machineries having Non-standard Pumps With Tailor made stuffing box, mostly for textile industry, Such Seals are Bi-directional, Unitized, Compact and easy to install in small housing too. Capsule Slots are given on outer periphery for reciprocating movement of collar for Seal adjustments. These pusher type Mechanical Seals can be designed with single spring to suit vast applications.

Application:

Clear, Viscous, Light Slurry, Dying Chemicals.

Operating Limits :

Pressure : 10 bar

Temperature : -20°C to 200°C

Speed : 20 m/s

Sizes : 20 mm to 150 mm



Materials :

Faces : Carbon, Silicon Carbide, Tungsten Carbide, Ceramic, Cr. Steel.

Elastomers : Viton, Aflas, Silicon

Hardware : SS-316

YKM-UE-M-Series (M7N)

Agitator Mechanical Seals Manufactures



Agitator Mechanical Seals

These Mechanical Seals are designed on various systems used for Agitating, Mixings and blending the products. Agitator Mechanical Seals usually perform on equipments with heavy shafts and low speed.

These Seals can be mounted on Top, Bottom, Side or Angular entry shafts in mixer. Unicorn Engineers have lot of designs to suit various applications. Basically these seals are highly tailor-made & designed according to process conditions and Equipment. We normally manufacture Agitator Mechanical Seals in following style :

1. Single Dry Mechanical Seal.
2. Single Mechanical Seal with Cartridge.
3. Double Mechanical Seal with Cartridge.

Cartridge Agitator Mechanical Seals are pre-assembled, hence avoid fitment problem and offered with or without jackets. Bearing can also be provided to control run-out of shaft at Seal.



System is provided with Double Mechanical Seal which is used for circulation of barrier fluid in cartridge assembly. Various accessories like Pressure Gauge, Temperature Indicator, Level Gauge, Hand Pump etc. can be provided with Thermosyphon system.

We are quite expert in reconditioning old Agitator Mechanical Seals at reasonable cost and also manufacture spares as per drawing.

Application:

All type of Clear and Viscous liquids & Vapours.

Operating Limits :

Pressure : 7 bar for Un-balance & 40 bar for Balance Seals

Temperature : -30°C to 250°C

Speed : 20 m/s

Sizes : 12 mm to 200 mm



Materials :

Faces : Carbon, Silicon Carbide, Tungsten Carbide, Ceramic.

Elastomers : PTFE, Perflouro, Viton, Aflas,.

Hardware : SS-316, Hastelloy-C, Alloy-20.



MECH. SEAL SIZES, APPLICATION AND TEMPERATURE

Stationary Faces Mechanical Seals

Stationary Faces

It is vital part of Mechanical Seal remain static in housing. It is non-moving part hence gives good life once fix properly. Stationary faces are available in different shapes like D, L, T, H, Du tungsten Carbide. Stationary face fits in housing with Elastomer in various shapes to stop leakage. It can be designed in any other shape also suiting to application.



'DU' Type (Carbon)



'CN' Type



'D' Type (TC)



'T' Type (Ceramic)



'C' Type



'L' Type (Sic)



'H' Type

Miscellaneous Mechanical Seals

Miscellaneous Mechanical Seals:

We design and make lot of non-standard and special type of Mechanical Seals as per applications. Few of them are shown here. Since we have lot of designs cannot be covered fully here.



YKM-UE-GF Series (Groundfos)



YKM-UE-AL-EM Series



YKM-UE-AL-2 Series



YKM-UE-AL-LKM Series



YKM-UE-AL-GM Series



YKM-UE-STR Series



YKM-UE-HYG Series



YKM-UE-FRS Series



YKM-UE-RO-SP Series

MECH. SEAL SIZES, APPLICATION AND TEMPERATURE

Bearing Bushes Manufacturers



Bearing Bush and Sleeve are used to guide and protect the rotating shaft. These are used in Magnetic Pump, Reactor, Turbine etc. Carbon and Silicon Carbide are used as common materials for making it. We fabricate various type of Bearing Bushes as per requirement



Graphite Packing :

These are made from moulding of flexible graphite. These packing are extremely useful in liquids at elevated temperatures up to 800°C. Graphite can be moulded in form of Ring, Packing, Gasket very easily. We provide Graphite packing to reduced leakage of Hot liquids in Pump, Valves, Cylinder Head etc. Graphite Packing works successfully as elastomers in case of metal Bellow Seals , which are used for extreme services.

Rotary Union Parts :

We make internal parts of Rotary Union, working in Water, Steam, Hot oil . In Rotary Union usually face, bush ,O Ring and springs are worn out with the time. We have made spare kits equivalent to reputed brands like Deublin, Maier, Duff-Norton, Johnson etc. for our clients.



Segmented Seals :

These are made in segments and held together with the help of spring. Segmented Seals are fabricated from Carbon in different shapes and sizes. These are used on rotating shaft in Turbines.



BUTTERFLY VALVE PARTS



500 Nitrile Valve Seat



S/S Valve handle



S/S Disk Bolt Kit



Alum. Stem Sleeve



Bush Kit for 340 Valve



Disk for 340 Valve



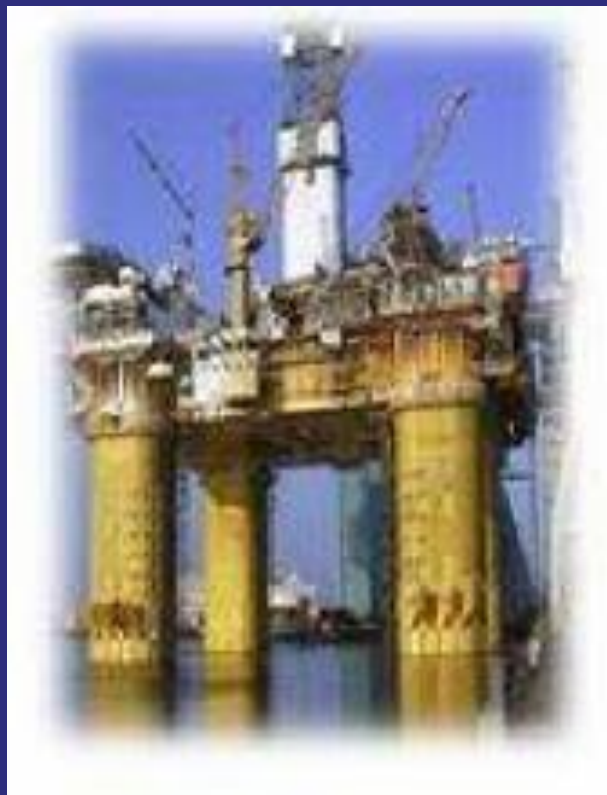
S/S Butterfly Valve



PT Megadaya Maju Selaras
Energy Material Supplies & Trading Co.



Specialize in sealing element, rubber product customize
hydraulic, pneumatic, valve, hardchrome plating, metal coating
Dies, manufacture part & engineering service



PT. MEGADAYA MAJU SELARAS

OFFICE

Jl Delima V Blok E. No. 137. Rambutan, Kec. Ciracas, Jak-Tim 13830
Telp/Fax : 021-77783304 Hp: 085772511157

WORKSHOP

Jl. Raya Narogong KM. 11,5
Bantar Gebang - Bekasi