



## MECHANICAL / ELECTRICAL DATA

Model		25	50	75	100	125	150	175
Useful electrical stroke (C.E.U.) +3/-0	mm	25	50	75	100	125	150	175
Theoretical electrical stroke (C.E.T.) ±1	mm	C.E.U. +1						
Resistance (C.E.T.)	kΩ	1	5					
Independent linearity (within C.E.U.)	± %	0.2	0.1	0.1	0.07	0.05		
Dissipation at 40° (0W at 120°C)	W	0.6	1.2	1.8	2.5	3	3.6	4.2
Maximum applicable voltage	V	25	60					
Mechanical stroke (C.M.)	mm	C.E.U. + 5						
Case length (A)	mm	C.E.U. + 38						
Total length (B)	mm	107	157	207	257	307	357	407

## ELECTRICAL CONNECTIONS

Connector output

Cable output

3 (+) Blue

2 Yellow

1 (-) Brown

C.E.U.

C.E.T.

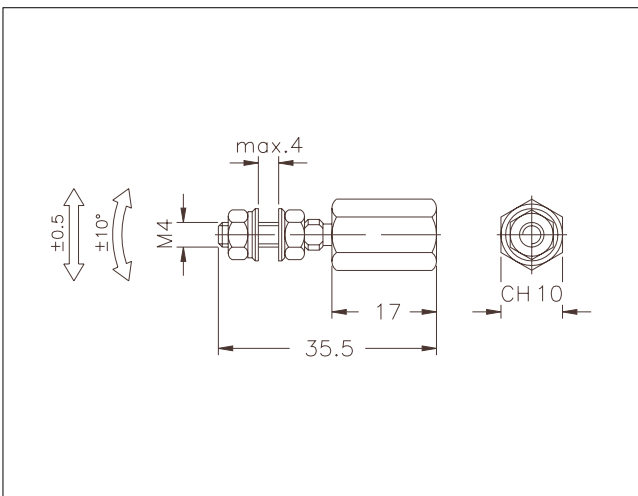
C.M.

Connection Side

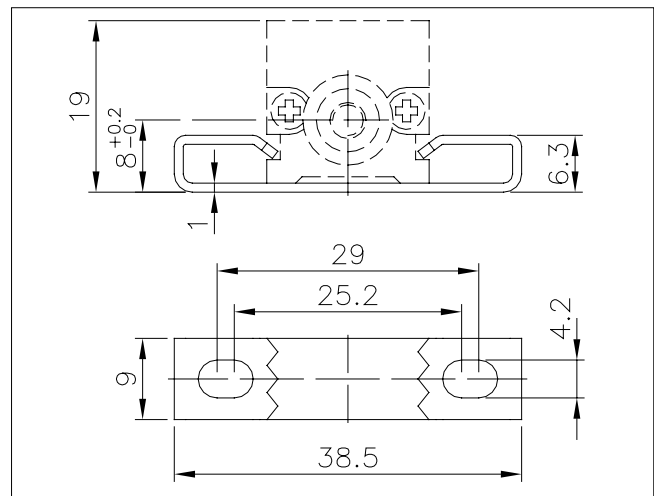
### INSTALLATION INSTRUCTIONS

- Respect the indicated electrical connections (DO NOT use the transducer as a variable resistance)
- When calibrating the transducer, be careful to set the stroke so that the output does not drop below 1% or rise beyond 99% of the supply voltage.

## COUPLING JOINT



## OPTIONAL FIXING KIT PKIT006



## ORDER CODE

Displacement transducer **PY1**

3 pole PVC cable output 3x0.25 1m.	<b>F</b>
5 pole connector output DIN 43322	<b>C</b>

**Model**

<b>S</b>	<b>M</b>
----------	----------

**Cable length (in meters)**

This part of the code only applies to the model with cable output

No certificate attached	<b>0</b>
Linearity curve to be attached	<b>L</b>
Standard mounting brackets (PKIT005)	<b>X</b>
Optional mounting brackets (PKIT006)	<b>S</b>
Color of plastic heads (green)	<b>0</b>

**Ex.: PY1 - C - 100**  
 Displacement transducer model PY1, 5-pole connector output, useful electrical stroke (C.E.U.) 100mm.

## ACCESSORIES

### STANDARD ACCESSORIES

Fixing kit: 4 brackets, M4x10 screws, grower

**PKIT005**

Fixing kit: 2 "wraparound" brackets (0000X000S00 configurator option)

**PKIT006**

Coupling joint

**PKIT020**



### OPTIONAL ACCESSORIES

5-pin axial female PCB connector DIN43322 IP40 clamp for wire  $\varnothing 4$  -  $\varnothing 6$  mm

**CON011**

5-pin axial female PCB connector DIN43322 IP65 clamp PG7 for wire  $\varnothing 4$  -  $\varnothing 6$  mm

**CON012**

5-pin 90° radial female PCB connector DIN43322 IP40 clamp for wire  $\varnothing 4$  -  $\varnothing 6$  mm

**CON013**

**GEFRAN spa** reserves the right to make any kind of design or functional modification at any moment without prior notice