

1) Choose the correct option out of the following.

A) Butyric acid - Clostridium butylicum

B) Acetic acid - Aspergillus niger

C) Streptokinase - immunosuppressive agent in organ transplant

D) Cyclosporine A - used as a 'clot buster' for removing clots from blood vessels

2) What is the BOD value per litre in sewage water?

A) 400 – 500mg

B) 200 – 500mg

C) 200 – 400mg

D) 500 – 600mg

3) Which statements are true out of the following?

(P) Endonuclease make cuts at specific positions within the DNA

(Q) A stirred - tank reactor is usually square in shape

(R) Bacterial cells must be first be made competent to take up DNA. This is done by treating them with divalent cation Mg^{++} .

A) Statement *P* is true

B) Statements *Q, R* are true

C) Statements *P, Q* are true

D) Statements *P, Q&R* are true

4) Statement *A* = DNA cannot pass through cell membrane

Reason *R* - DNA is a hydrophobic molecule

A) Statement *A* is correct and Reason *R* is wrong

B) Statement *A* and Reason *R* both are correct because *R* is not the explanation of *A*

C) Statement *A* and Reason *R* both are correct because *R* is the explanation of *A*

D) Statement *A* is wrong and Reason *R* is correct

5) The Fragments of DNA can be separated by a technique known as

A) Gel electrophoresis

B) Micro injection

C) Gene gun

D) Biolistics

6) infects the roots of tobacco plants and causes a great reduction in yield.

A) *Wuchereria bancrofti*

B) *Bacillus thuringiensis*

C) *Meloidogyne incognita*

D) *Ascaris lumbricoides*

7) In some children ADA deficiency can be cured by which transplantation?

A) Bone marrow

B) Liver

C) Kidney

D) Spleen

8) In Rosie cow, which is nutritionally more balanced product for babies?

A) Beta-lactalbumin

B) Alpha-lactalbumin

C) Albumin

D) Immunoglobulin

9) In which region maximum and minimum, mean annual precipitation is observed respectively?

A) Grassland, Desert

B) Tropical forest, Temperate forest

C) Tropical forest, Desert

D) Coniferous forest, Temperate forest

10) Which animal is capable of meeting all its water requirements through its internal fat oxidation?

A) Kangaroo rat

B) Snail

C) Kangaroo

D) Rat

11) If you were to count the number of insects feeding on a big tree, what kind of pyramid would you get?

- A) Oblique
- B) Inverted
- C) Upright
- D) Upright - inverted

12) Which stage of plant succession stage is shown in the given diagram?



- A) Phytoplankton
- B) Submerged plant stage
- C) Reed - swamp stage
- D) Submerged free floating plant stage

13) "That within a region species richness increased with increasing explored area, but only upto a limit." Which naturalist has proposed this statement?

- A) Paul Ehrlich
- B) David Tilman
- C) Alexander von Humboldt
- D) Trashow

14) Which species extinction in the last 500 years was due to over exploitation by humans?

- A) Quagga
- B) Dodo
- C) Steller's sea cow
- D) Thylacine

15) Which nutrient is absent in dirty water of sewage?

- A) Nitrate
- B) Ammonia
- C) Sodium
- D) Copper

16) What is the unit of measurement of thickness of ozone layer?

- A) DU
- B) DB
- C) DO
- D) DN

17) Absence of teeth, bifid tongue and mental retardness are observed in

- A) Down's syndrome
- B) Albinism
- C) Klinefelter's syndrome
- D) Oral-facial-digital syndrome

18) Match the following. Choose the correct option.

	Column - I		Column - II
(i)	Conidia	(P)	Sponges
(ii)	buds	(Q)	Penicillium
(iii)	offset	(R)	Water hyacinth
(iv)	Gemmules	(S)	Hydra

- A) (i-Q) (ii-S) (iii-R) (iv-P)
- B) (i-Q) (ii-R) (iii-S) (iv-P)
- C) (i-P) (ii-S) (iii-R) (iv-Q)
- D) (i-S) (ii-Q) (iii-P) (iv-R)

19) Chromosome numbers in rice leaf is X and chromosome numbers in egg of rat is Y .

A) $X = 34, Y = 21$

B) $X = 12, Y = 24$

C) $X = 24, Y = 21$

D) $X = 20, Y = 24$

20) Which type of carpel is observed in *Michelia*?

A) Bicarpellary, syncarpous

B) Multicarpellary, apocarpous

C) Multicarpellary, syncarpous

D) Bicarpellary, apocarpous

21) In water hyacinth and water lily, the pollination is carried out by which agent?

A) Water

B) Only wind

C) Only insects

D) Insects or wind

22) In black pepper remnants of nucellus persistent is known as

A) Embryo

B) Endosperm

C) Perisperm

D) Plumule

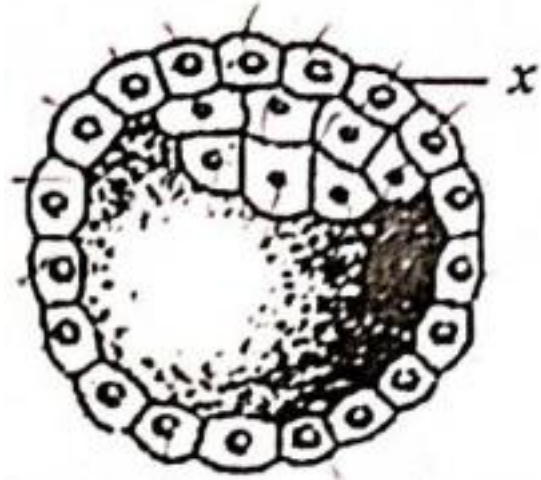
23) hormone acts on the sertoli cells and stimulates secretion of some factors which help in the process of spermiogenesis.

A) TSH

B) FSH

C) LH

D) PIF



24) What indicates ' x ' in the following diagram?

- A) Trophoblast
- B) Inner cell mass
- C) Blastomeres
- D) Uterine cells

25) Zona Pellucida is first observed in

- A) Tertiary follicle
- B) Secondary follicle
- C) Primary follicle
- D) Graafian follicle

26) The hormone releasing IUD is

- A) Multiload 375
- B) Cu – 7
- C) LNG-20
- D) Cu – T

27) In which ART method more than 8 blastomeres are transferred into the uterus to complete its further development?

- A) IUI
- B) IUT
- C) GIFT
- D) ZIFT

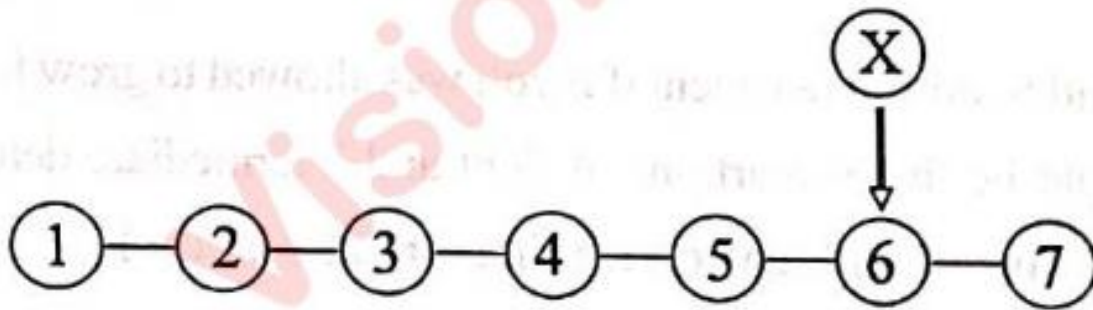
28) The blood group of Rameshbhai is B and his daughter's blood group is AB. What will be the blood group of his wife?

- A) B or O
- B) A or AB
- C) A or B
- D) A or O

29) "The behaviour of chromosomes was parallel to the behaviour of genes" was proposed by

- A) Walter Sutton and Theodor Boveri
- B) Alfred Hershey and Martha Chase
- C) Watson and Crick
- D) MacLeod and McCarty

30) Choose the correct triplet codon option for ' X '.



Sickle cell HbS peptide]

- A) GAU
- B) GAG
- C) GUG
- D) GAA

31) Histone proteins are rich in and amino acids.

- A) Lysine, Arginine
- B) Arginine, Tyrosine
- C) Lysine, Aspartic acid
- D) Glutamic acid, Lysine

32) What is the correct sequence to transfer genetic material from virus to bacteria in Hershey - Chase experiment?

- A) Infection-Centrifugation - Blending
- B) Centrifugation - Blending - Infection
- C) Centrifugation - Infection - Blending
- D) Infection - Blending - Centrifugation

33) In Meselson and Stahl's experiment if E.coli was allowed to grow for 80 minutes then what would be the proportions of light and intermediate density of DNA molecule respectively? (If E.coli divides in every 20 minutes)

- A) 12: 2
- B) 6: 2
- C) 2: 2
- D) 14: 2

34) The brain capacity of Homo habilis is

- A) 1400cc – 1600cc
- B) 1350cc – 1400cc
- C) 650cc – 800cc
- D) 900cc – 1200cc

35) In Gir forest out of 100 individuals 40 individuals are recessive. Calculate the percentage of heterozygous progeny by Hardy - Weinberg principle.

- A) 48%
- B) 16%
- C) 36%
- D) 24%

36) The test confirmed the disease caused by salmonella typhi.

- A) ELISA Test
- B) Widal Test
- C) W.B. Test
- D) PCR Test

37) quickly reduce the symptoms of allergy.

- A) Serotonin
- B) Heparin
- C) Adrenaline
- D) Histamine

38) When ready - made antibodies are directly given to protect the body against foreign agents, it is called

- A) Humoral immune response
- B) Cytoplasm mediated immunity
- C) Cell mediated immunity
- D) Passive immunity

39) Which of the following crop of Okra (Bhindi) is insect pest resistance?

- A) Pusa Sawani
- B) Pusa Sem
- C) Pusa Gaurav
- D) Pusa Komal

40) Which statement is incorrect for successful Bee-keeping?

- A) Management of beehives during any one season
- B) Knowledge of the nature and habits of bees
- C) Selection of suitable location for keeping the beehives
- D) Catching and hiving of swarms