

Catalogue





Top seller

Adjustable round shoring beam aluminum



**Cargo securing for
box trucks**

Shoring beam COMBI-BEAM 1858



Technical data

The COMBI-BEAM 1858 + 18z59 is development with a particular focus on user-friendliness and gentle use in pressure-sensitive vehicle areas.

- > range of application 2,450 – 2,500 mm
- > support tube made of aluminum
- > 1858 version equipped with black PVC hose
- > 1859 without PVC hose
- > with end piece 1858 for combi or anchor combi lashing tracks
- > with product sticker or with customer-specific product sticker



Designation	Item number
Shoring beam Combi-Beam type 1858 with coating WIS sticker	221858001-2450



Designation	Item number
Shoring beam Combi-Beam type 1859 WIS sticker	221859001-2450

Advantages	for the user	for the means of transport / the cargo	compared to similar products
In conjunction with non-slip materials, cargo with a weight of up to 2,000 kg can be secured in the direction of travel using one Combi-Beam	✓	✓	✓
Easy telescoping as standard up to 70 mm	✓		✓
No protruding operating controls over its entire range	✓	✓	✓
Silent design with plastic centring piece	✓		✓
Version 1858: Support tube with PVC coating for a pleasant user feel, even at cool outside temperatures, and as protection for the cargo	✓	✓	✓
The combination pins on both sides snap into the combi lashing track	✓	✓	✓
The combination pins are gentle on the material inside the lashing track	✓	✓	✓
When the Combi-Beam is inserted by the user, no simultaneous pressure is required	✓	✓	✓
The combination pins are prevented from slipping out by a locking mechanism activated by applying pressure to the side panel	✓	✓	✓
Thanks to the locking mechanism in the combi lashing track, the system does not damage the transport vehicle	✓	✓	✓
High-quality product identification glued to the telescope	✓		✓

Steel PEN-BEAM



Technical data

- >

support tube diameter: 42 mm
- >

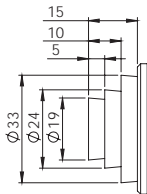
blocking force BC 500 daN with uniform surface load
- >

with PVC coating in black
- >

possible application range: 2.480 mm (+/- 25 mm)

Designation	Item number
Shoring beam type 1873 PEN-BEAM steel 44	221873004412-2480
Shoring beam type 1873 PEN-BEAM steel 44 with coating	221873004412Ü-2480

Version: 44
19/24/33 mm combination pin



Aluminium PEN-BEAM



Technical data

- >

support tube diameter 42 mm
- >

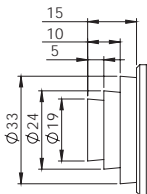
blocking force BC 400 daN with uniform surface load
- >

with PVC coating in black
- >

for vehicle interior dimensions 2.480 mm (+/- 25 mm)

Designation	Item number
Shoring beam type 1871 PEN-BEAM aluminium 44	221871004420-2480
Shoring beam type 1871 PEN-BEAM aluminium 44 with coating	221871004420Ü-2480

Verison: 44
19/24/33 mm combination pin



Steel shoring beam



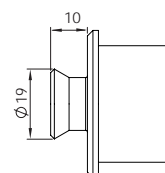
Technical data

- › support tube diameter: 42 mm
- › blocking force BC 500 daN with uniform surface load

- › with PVC coating in blue
- › possible application range: 2440 mm - 2520 mm

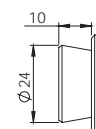
Designation	Item number
Shoring beam type 1817 steel with pin 09	221817000912
Shoring beam type 1817 steel with pin 09 with coating	221817000912Ü

Version: 09
19 mm pin



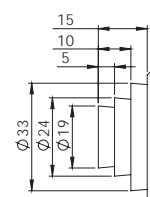
Designation	Item number
Shoring beam type 1817 steel with pin 24	221817002412
Shoring beam type 1817 steel with pin 24 with coating	221817002412Ü

Version: 24
24 mm pin



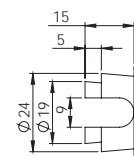
Designation	Item number
Shoring beam type 1817 steel with pin 44	221817004412
Shoring beam type 1817 steel with pin 44 with coating	221817004412Ü

Version: 44
19/24/33 mm combination pin



Designation	Item number
Shoring beam type 1817 steel with pin 45	221817004512
Shoring beam type 1817 steel with pin 45 with coating	221817004512Ü

Version: 45
19/24 mm pin for rod rail



Aluminium shoring beam



Technical data

- >

 support tube diameter: 42 mm
- >

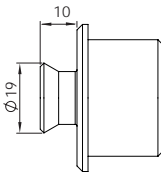
 blocking force BC 400 daN with uniform surface load
- >

 with PVC coating in blue
- >

 possible application range: 2440 mm - 2520 mm

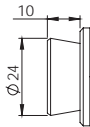
Designation	Item number
Shoring beam type 1817 aluminium with pin 09	221817000920
Shoring beam type 1817 aluminium with pin 09 with coating	221817000920Ü

Version: 09
19 mm pin



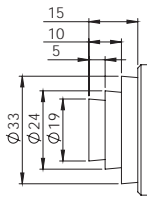
Designation	Item number
Shoring beam type 1817 aluminium with pin 24	221817002420
Shoring beam type 1817 aluminium with pin 24 with coating	221817002420Ü

Version: 24
24 mm pin



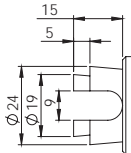
Designation	Item number
Shoring beam type 1817 aluminium with pin 44	221817004420
Shoring beam type 1817 aluminium with pin 44 with coating	221817004420Ü

Version: 44
19/24/33 mm combination pin

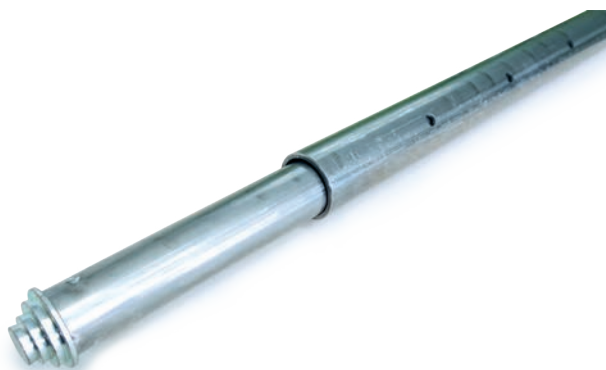


Designation	Item number
Shoring beam type 1817 aluminium with pin 45	221817004520
Shoring beam type 1817 aluminium with pin 45 with coating	221817004520Ü

Version: 45
19/24 mm pin for rod rail



Steel shoring beam, adjustable



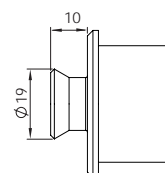
Technical data

- support tube diameter: 42 mm
- blocking force BC 500 daN with uniform surface load

- with PVC coating in blue
- possible application range: 2.235 mm - 2.685 mm

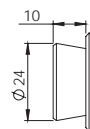
Designation	Item number
Shoring beam type 1811 steel with pin 09	221811000912
Shoring beam type 1811 steel with pin 09 with coating	221811000912Ü

Version: 09
19 mm pin



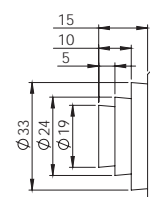
Designation	Item number
Shoring beam type 1811 steel with pin 24	221811002412
Shoring beam type 1811 steel with pin 24 with coating	221811002412Ü

Version: 24
24 mm pin



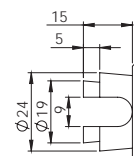
Designation	Item number
Shoring beam type 1811 steel with pin 44	221811004412
Shoring beam type 1811 steel with pin 44 with coating	221811004412Ü

Version: 44
19/24/33 mm combination pin



Designation	Item number
Shoring beam type 1811 steel with pin 45	221811004512
Shoring beam type 1811 steel with pin 45 with coating	221811004512Ü

Version: 45
19/24 mm pin for rod rail



Aluminum shoring beam, adjustable



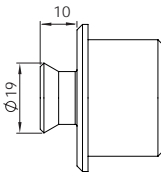
Technical data

- > support tube diameter: 42 mm
- > blocking force BC 400 daN with uniform surface load

- > with PVC coating in blue
- > possible application range: 2.235 mm - 2.685 mm

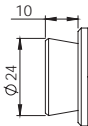
Designation	Item number
Shoring beam type 1808 aluminium with pin 09	221808000920
Shoring beam type 1808 aluminium with pin 09 with coating	221808000920Ü

Version: 09
19 mm pin



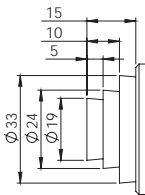
Designation	Item number
Shoring beam type 1808 aluminium with pin 24	221808002420
Shoring beam type 1808 aluminium with pin 24 with coating	221808002420Ü

Version: 24
24 mm pin



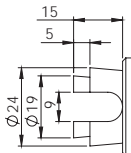
Designation	Item number
Shoring beam type 1808 aluminium with pin 44	221808004420
Shoring beam type 1808 aluminium with pin 44 with coating	221808004420Ü

Version: 44
19/24/33 mm combination pin

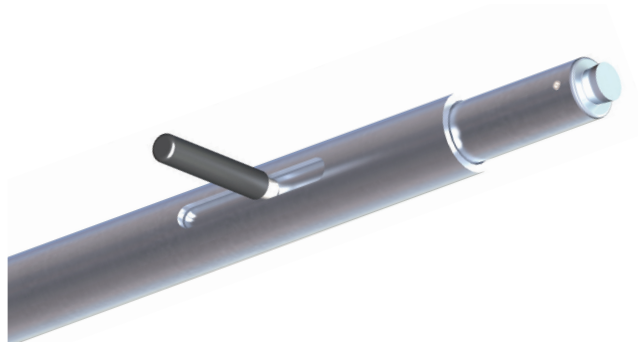
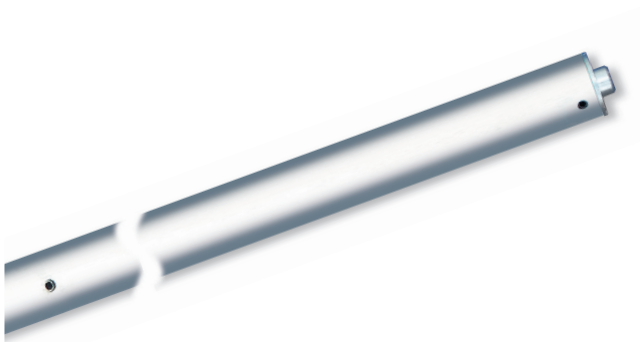


Designation	Item number
Shoring beam type 1808 aluminium with pin 45	221808004520
Shoring beam type 1808 aluminium with pin 45 with coating	221808004520Ü

Version: 45
19/24 mm pin for rod rail



"Power" – Aluminum shoring beam



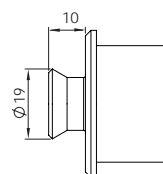
Technical data

- support tube diameter: 50 mm
- blocking force BC 700 daN with uniform surface load

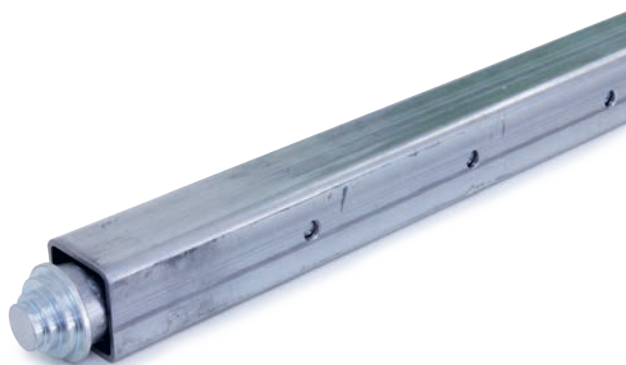
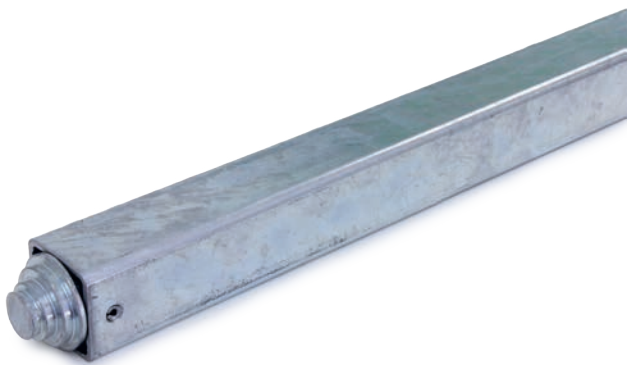
Designation	Item number
Power shoring beam type 1850 aluminium with pin 09	221850150920
Power shoring beam type 1854 aluminium with pin 09	221854010920-2430

- "ergo" version – the additional handle facilitates the use of the shoring beam
- for vehicle interior dimensions 2,400 – 2,480 mm

Version: 09
19 mm pin



Square steel shoring beam



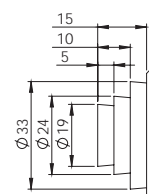
Technical data

- support tube: 41 x 41 mm
- blocking force BC 500 daN with uniform surface load

Designation	Item number
Square shoring beam type 1827 steel with pin 44	221827004412
Square shoring beam type 1812 steel with pin 44	221812004412

- adjustable
- possible application range: 2.440 mm - 2.520 mm

Version: 44
19/24/33 mm combination pin



Aluminum cargo bar 1842, 1843, 1845



Technical data

- > support tube diameter: 42 mm
- > operating element: lever with rack
- > equipped with non-slip rubber feet on both sides
- > with spring system

Designation	Item number
Cargo bar aluminium type 1842 2,350–2,720 mm	221842010020TW
Cargo bar aluminium type 1843 2,350–2,720 mm	221843010020TW
Cargo bar aluminium type 1844 2,500–2870 mm	221844010020TW
Cargo bar aluminium type 1845 2,650–3,020 mm	221845010020TW

Aluminum cargo bar 1867



Technical data

- > support tube diameter: 38 mm
- > operating element: lever with rack
- > equipped with non-slip rubber feet on both sides
- > with spring system

Designation	Item number
Cargo bar aluminium type 1867 2,260–2,630 mm	221867010020TW

Steel cargo bar 1840



Technical data

- > support tube: 35 x 35 mm
- > operating element: lever with hole grid in telescopic tube
- > equipped with non-slip rubber feet on both sides
- > with spring system

Designation	Item number
Cargo bar steel type 1840 1,900–2,800 mm	2218400000012

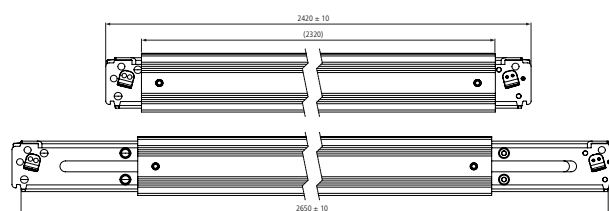
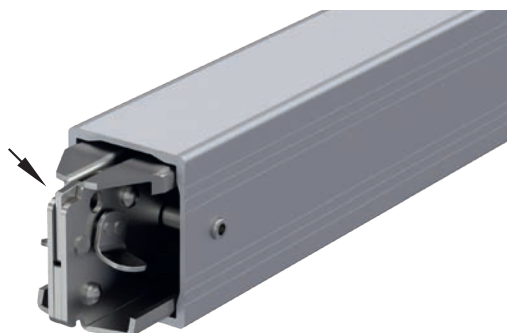
Aluminum loading decking beam



Technical data

- with steel end pieces which can be pulled out on both sides for fixing in a combi or anchor combi lashing track
- end pieces equipped with innovative "Easy-Unlock button"
- application range: 2,430 – 2,650 mm
- blocking force: 1.100 daN
- PL: 1.300 daN

Designation	Item number
Decking beam type 1835 2,430–2,650 mm for anchor combi lashing track	22183500-2320

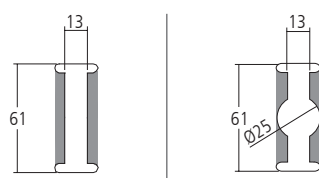


Locked state in the lashing track



Simple unlocking by slightly pressing the "Easy-Unlock" button

Loading beam suitable for these tracks



Aluminum loading decking beam

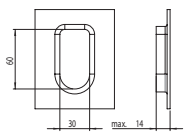


Technical data

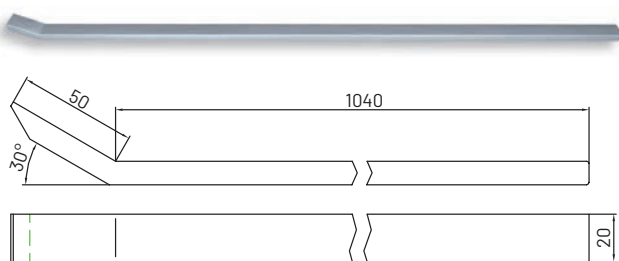
- > with double-sided extendible steel end pieces for fixing in a Talfix perforated sheet panel
- > application range: 2,460 – 2,700 mm
- > blocking force: 1.100 daN
- > PL: 1.300 daN

Designation	Item number
Decking beam type 1839 2,460–2,700 mm for Talfix perforated plate panels	22183940-2350

Loading beam suitable for these perforated sheets



Unlocking bar for sliding decking beam



Designation	Item number
Unlocking bar for sliding decking beam	227000000020

Aluminum sliding decking beam 7007, 7008



Technical data

- > version 7007: with double-sided extendible aluminum end pieces for fixing in an aluminum guide rail (50 mm rail width)
- > version 7008: with double-sided extendible aluminum end pieces for fixing in an aluminum guide rail (68 mm rail width)
- > application range: 2,450 – 2,530 mm
- > blocking force: 1.100 daN
- > PL: 1.300 daN

Designation	Item number
Sliding decking beam type 7007 2,450–2,530 Standard (50 mm track width)	227007000020
Sliding decking beam type 7008 2,450–2,530 Schmitz (68 mm track width)	227008000020

Loading beam suitable for these tracks

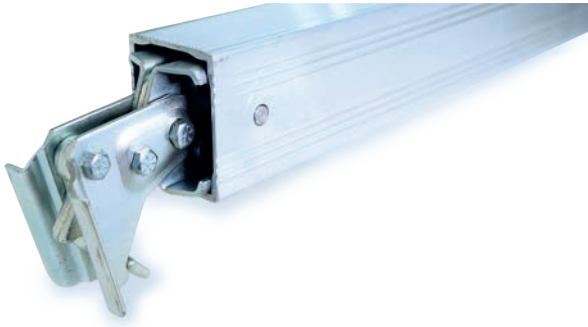


Single aluminum guiding track 7002



Tandem aluminum guiding track 7002

Aluminum sliding decking beam 5003



Technical data

- with double-sided extendible steel end pieces for fixing in a steel guiding track (50 mm rail width)
- application range: 2,450 – 2,530 mm
- blocking force: 1.100 daN
- PL: 1.300 daN

Designation	Item number
Sliding decking beam type 5003 2,450-2,530 mm for KRONE swap boxes	225003000012

Loading beam suitable for these tracks



Single steel
guiding track
7004

Aluminum sliding decking beam 7105

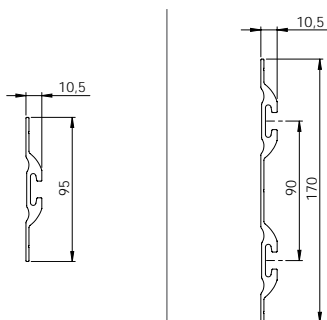


Technical data

- with double-sided extendible aluminum end pieces for locking in an airline rail made of aluminum
- application range: 2,370 – 2,600 mm
- blocking force: 1.100 daN
- PL: 1.300 daN

Designation	Item number
Sliding decking beam type 7105 2,370-2,600 mm for airline track	227105000120

Loading beam suitable for airline guide lashing tracks



Single airline
lashing track
5001

Tandem airline
lashing track
5021

Shoring beam PEN-BEAM

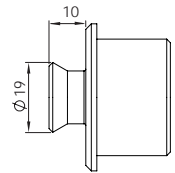
Product description

The PEN-BEAM is equipped with innovative gas pressure springs that exert a uniform and defined pressure on the vehicle superstructure across the entire telescopic range. The special engaging function in the telescopic tube enables ergonomic operation. In the engaged position, the PEN-Beam is shorter than the width of the vehicle, which makes handling easy. All PEN-BEAM variants can be ordered with a robust PVC sheathing. All versions can be configured to suit the particular interior vehicle dimensions and are equipped to match the specific lashing track type.

Designation	Item number
Shoring beam type 1870 PEN-BEAM aluminium 09	221870020920-2250
Shoring beam type 1870 PEN-BEAM aluminium 09 with coating	221870020920Ü-2250



Version: 09
19 mm pin



When retracted and locked the PEN-BEAM is shorter than the inside dimensions of the vehicle and this enables an ergonomic use.



The PEN-BEAM is unlocked by slight pressure on the telescopic tube.

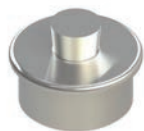


The telescopic tube moves slowly into the lashing track and with constant pressure. This minimizes the risk of damage to the vehicle body.

Aluminum "Spairbalken 1851" (shoring beam)

with compression spring telescope and handle

Pin design



Type 09



Type 19
non-rotating
Ensure correct
positioning!



Type 24



Type 25
non-rotating
Ensure correct
positioning!



for lashing track



Hole pitch
ø 20 mm



Airline version



Hole pitch
ø 25 mm



Combi track
ø 25 mm

Aluminum "Spairbalken 1857" (shoring beam)

with compression spring telescope

Pin design



Type 09



Type 19
non-rotating
Ensure correct
positioning!



Type 24



Type 25
non-rotating
Ensure correct
positioning!



Type 32



for lashing track



Hole pitch
ø 20 mm



Airline version



Hole pitch
ø 25 mm

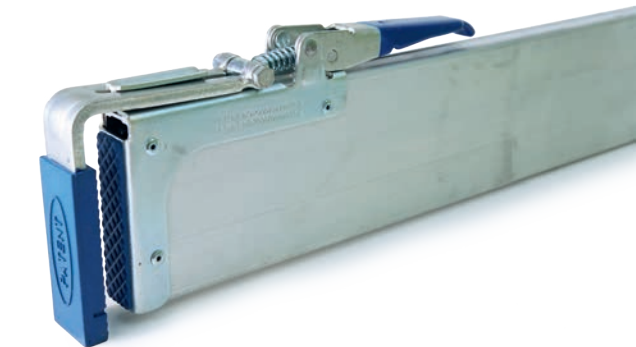


Combination
track ø 25 mm



Keyhole 34/22

Aluminum parting wall lock for trailers



Technical data

- > application range: 1,250 – 1,550 mm / 1,500 –1,800 mm / 2,100 – 2,400 mm
- > max. blocking force: BC 400 daN for uniform area loading up to 2,700 mm

Designation	Item number
Parting wall lock for trailer alum. 1,250-1,550 mm	2374530-1250
Parting wall lock for trailer alum. 1,500-1,800 mm	2374530-1500
Parting wall lock for trailer alum. 2,100-2,400 mm	2374530-2100

Garment rail TA for airline lashing tracks



Technical data

- > with the aid of 2 double-airline end fittings 380 (incl.), it snaps clothes rails into airline lashing tracks
- > **area of application: must be specified with each enquiry or order**
- > support tube: chrome-plated
- > without spring function
- > equipped with two Velcro straps for securing the throw bar

Designation	Item number
Garment rail type TA for transporters according to specification	26750-XXXX



Hang the garment rail in the double airline fitting



Double airline fitting 380

Storage rail for "Airline Beam"



Technical data

- material: steel, black black KTL coated
- to be fastened to the airline rail with a screw fitting
- Set consists of 2 parking angles, 2 star handles with Airline screws 8 x 25
- W x H x D: 79 x 120 x 50 mm

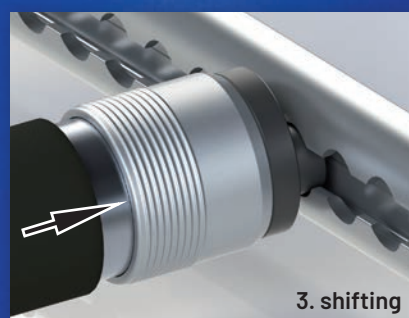
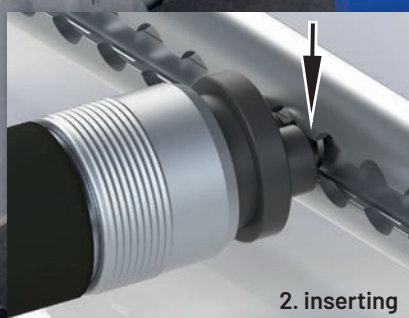
Designation	Item number
Parking device for airline beam set black	215110010

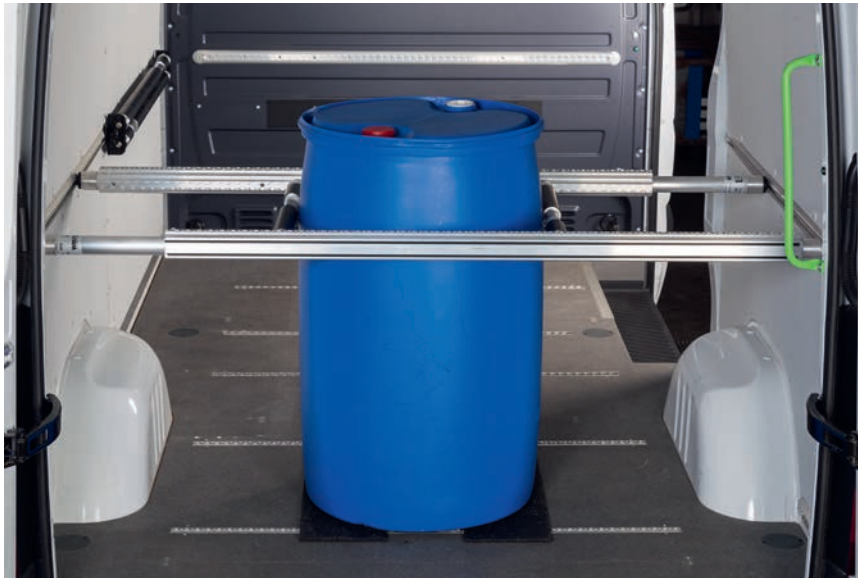
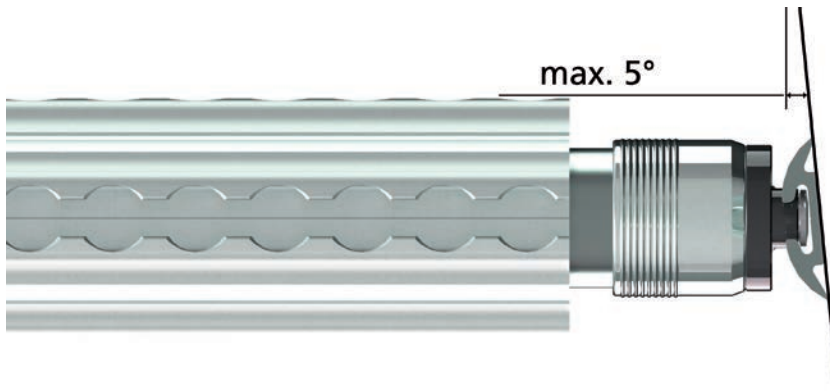


Aluminum shoring beam 1856 telescopic

Product description

The shoring beam is used in conjunction with airline lashing tracks running parallel in the vehicle, trailer or other means of transport to ensure cargo securing with positive locking. The shoring beam can be used both horizontally and vertically for securing cargo. The automatic airline pins on both sides snap into one pair of holes in each of the airline lashing tracks.





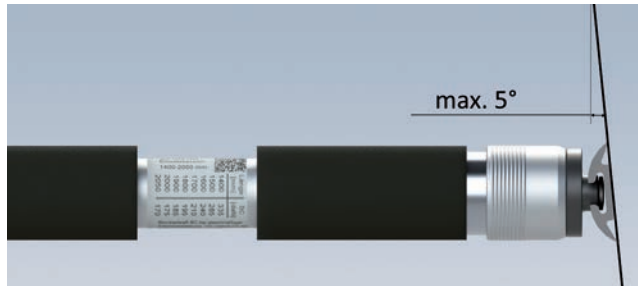
horizontal application



vertical application



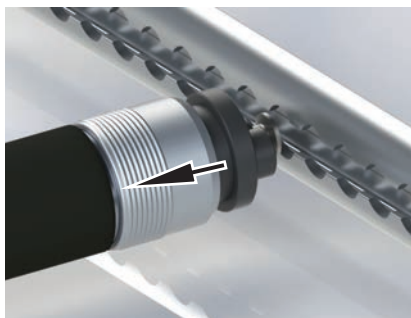
Shoring beam "Airline Beam" 1855



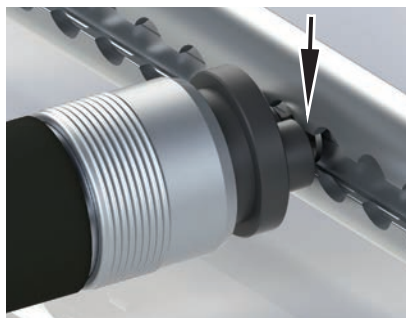
Product description

Used in conjunction with airline lashing tracks running parallel in the vehicle, the trailer or other means of transport, the Airline Beam ensures cargo securing with positive locking. The Airline Beam can be used horizontally and vertically for cargo securing. The automatic airline pins on both sides snap into one pair of holes in each of the airline lashing tracks.

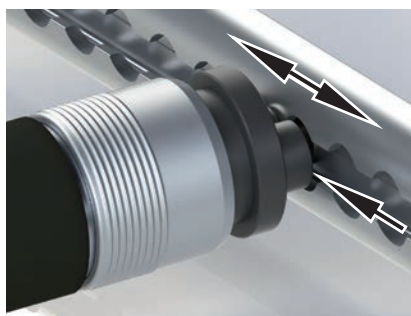
1. unlocking



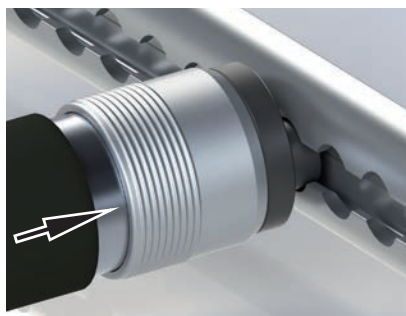
2. inserting



3. shifting



4. locking



Example of a label:
Can be customised with your logo and your address on request!

Advantages

- suited for horizontal and vertical application
- In conjunction with non-slip materials, cargo with a weight of up to 2,250 kg can be secured in the direction of travel using one Airline Beam.
- smooth and continuous telescopic adjustment
- no protruding operating controls over its entire range
- supporting tube and hand piece with PVC coating for comfortable handling even in cold outside temperatures, as well as for protection of the load
- The automatic airline pins on both sides snap into one pair of holes in each of the airline lashing tracks.
- The automatic airline pins do not damage the material within the airline lashing track.
- When the Airline Beam is inserted by the user, no simultaneous pressure in both directions is required.
- The airline automatic spigot is prevented from slipping out by a locking mechanism activated by applying pressure to the side panel.
- Thanks to the locking mechanism in the airline lashing track, the system does not damage the transport vehicle.



Shoring beam "Airline Beam" 1855



Technical data

- > with PVC coating in black
- > support tube diameter: 42 mm
- > both sides with innovative automatic pin for the airline lashing track

- > with pull-out stop for 150 mm telescopic distance

Designation	possible field of application	Blocking capacity	Item number
Shoring beam Airline-Beam type 1855 650 black pull-out 150 mm	650 – 760 mm	550 – 675 daN	221855-150-0650
Shoring beam Airline-Beam type 1855 800 black pull-out 150 mm	800 – 910 mm	475 – 600 daN	221855-150-0800

- > with pull-out stop for 350 mm telescopic distance

Designation	possible field of application	Blocking capacity	Item number
Shoring beam Airline-Beam type 1855 900 black pull-out 350 mm	900 – 1,210 mm	350 – 575 daN	221855-350-0900
Shoring beam Airline-Beam type 1855 1,000 black pull-out 350 mm	1,000 – 1,310 mm	325 – 550 daN	221855-350-1000

Shoring beam "Airline Beam" 1855

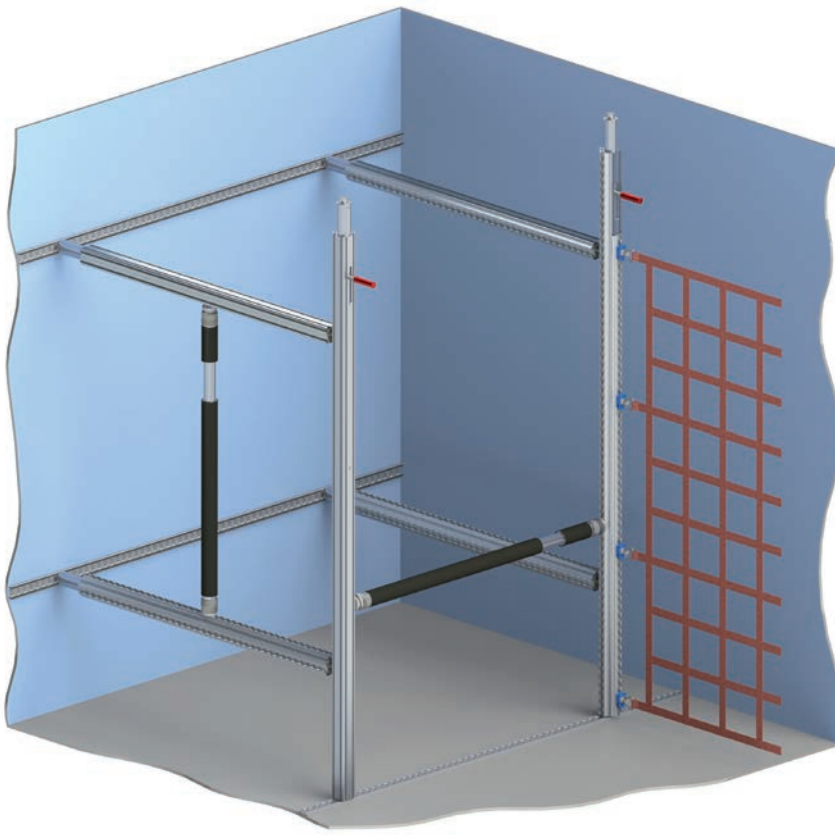


Technical data

- > with PVC coating in black
- > support tube diameter: 42 mm
- > both sides with innovative automatic pin for the airline lashing track
- > with pull-out stop for 600 mm telescopic distance

Designation	possible field of application	Blocking capacity	Item number
Shoring beam Airline-Beam type 1855 1,100 black pull-out 600 mm	1.100 – 1.660 mm	250 – 550 daN	221855-600-1100
Shoring beam Airline-Beam type 1855 1,200 black pull-out 600 mm	1.200 – 1.760 mm	225 – 525 daN	221855-600-1200
Shoring beam Airline-Beam type 1855 1,300 black pull-out 600 mm	1.300 – 1.860 mm	225 – 525 daN	221855-600-1300
Shoring beam Airline-Beam type 1855 1,400 black pull-out 600 mm	1.400 – 1.960 mm	225 – 500 daN	221855-600-1400
Shoring beam Airline-Beam type 1855 1,500 black pull-out 600 mm	1.500 – 2.060 mm	200 – 450 daN	221855-600-1500
Shoring beam Airline-Beam type 1855 1,600 black pull-out 600 mm	1.600 – 2.160 mm	200 – 425 daN	221855-600-1600
Shoring beam Airline-Beam type 1855 1,700 black pull-out 600 mm	1.700 – 2.260 mm	200 – 400 daN	221855-600-1700
Shoring beam Airline-Beam type 1855 1,800 black pull-out 600 mm	1.800 – 2.360 mm	200 – 375 daN	221855-600-1800
Shoring beam Airline-Beam type 1855 1,900 black pull-out 600 mm	1.900 – 2.460 mm	200 – 350 daN	221855-600-1900

Aluminum shoring beam modular system



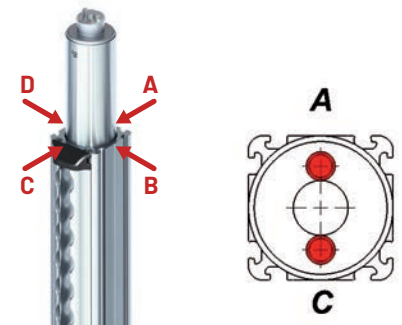
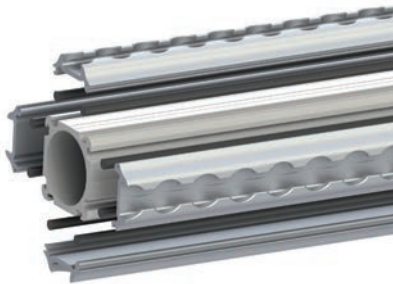
Strength meets individuality

The new shoring beam system is based on a new 50 x 50 mm aluminum profile. In the design phase, the focus was on the many customer requests we received.

Blocking forces BC up to 900 daN were achieved at our in-house testing facility, depending on the version.

Its true strength is its versatility and individual connection options to the inserted airline sliding profile.

In addition to the Airline Beam 1855, lashing straps as well as Safe-guard cargo securing nets or further accessories for the airline lashings can be used.



The supporting tube

The new square shoring beams can be equipped in their basic form or additionally with inserted airline lashing tracks or with rubber protection along their entire length or in sections.

The connection systems

In addition to the design features of the supporting tube, we offer the shoring beams with the proven compression spring telescopic tubes for perforated rail systems or freely telescopic without compressive forces with the Airline automatic pin in conjunction with the airline lashing tracks.

Version secured against rotation

The pin version with anti-twist protection type 19 + type 25, the pin is mounted lengthways from side A to side C.