



**ACCESSORIES**

**E**nclosure

**C**limate

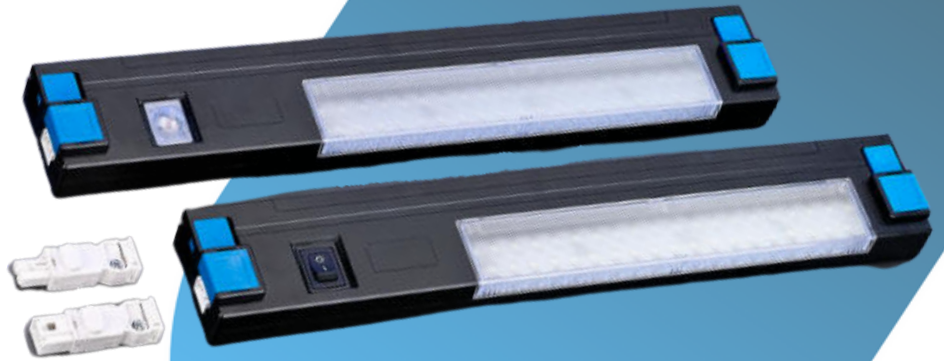
**C**ontrol Ltd.



## LED LIGHTS

**Available in magnetic or bracket versions, switched or sensored. Can be used in combination with our Dual Door Switch to increase life and save energy.**

Part Number	Voltage	Description
LED1	110-250VAC	<u>Magnetic Fixing 5W</u>
LED2	110-250VAC	Bracket Fixing 5W
LED3SM	110-250VAC	Sensor Magnetic Fixing 5W
LED4SB	110-250VAC	Sensor Bracket Fixing 5W
LED24BDCM	24VDC	Magnetic Fixing 5W
LED24VDCB	24VDC	Bracket Fixing 5W



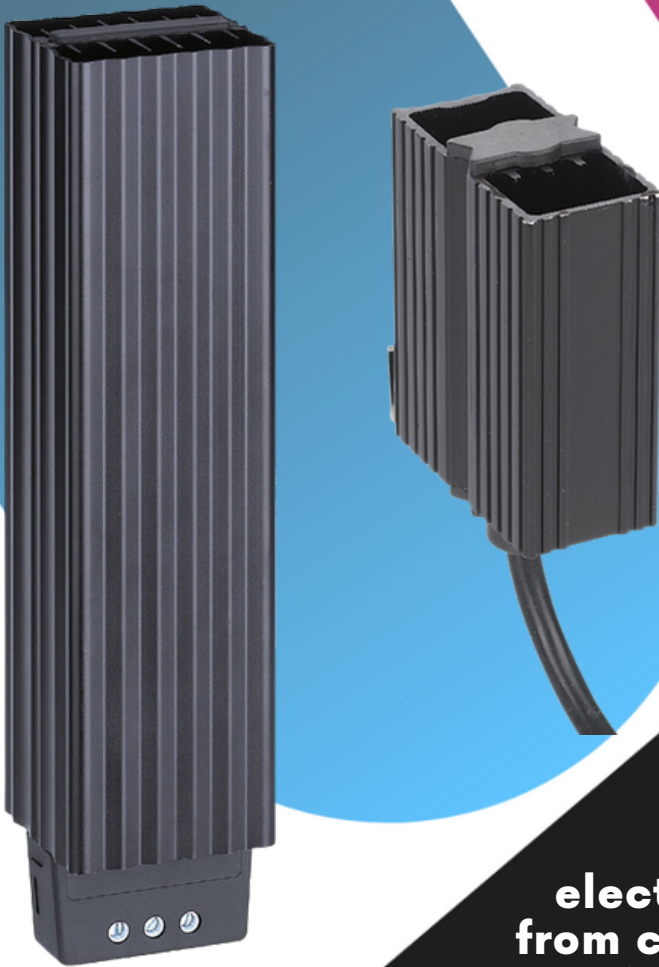
## LED LIGHTS

**Available in magnetic or bracket versions, switched or sensored. Can be used in combination with our Dual Door Switch to increase life and save energy.**

Part Number	Voltage	Description
LEDACSWITCH	110-250VAC	Switch Bracket & Magnetic 5W
LEDACSENSOR	110-250VAC	Sensor Bracket & Magnetic 5W
LEDDCSWITCH	24VDC	Switch Bracket & Magnetic 5W
LEDDCSENSOR	24VDC	Sensor Bracket & Magnetic 5W



**Panel Cooling**  
ENCLOSURE CLIMATE CONTROL



## PANEL HEATERS

Used for heating air inside electrical cabinets protecting electrical and electronic components from condensation, corrosion and short circuit. Can be used in combination with N/C thermostats.

Heating Capacity	Part Number	Operating Voltage
10W	ECC-HEAT10W	110V - 250VAC
20W	ECC-HEAT20W	110V - 250VAC
30W	ECC-HEAT30W	110V - 250VAC
50W	WID05ZXOX	110V - 250VAC
100W	WID10ZXOX	110V - 250VAC
150W	WID15ZXOX	110V - 250VAC





## PROTECTED PANEL HEATERS

Protected heaters used for heating air inside electrical cabinets protecting electrical and electronic components from condensation, corrosion and short circuit. Can be used in combination with N/C thermostats.

Heating Capacity	Part Number
10W	ECC-H10WP
20W	ECC-H20WP
30W	ECC-H30WP
50W	WID05ZXOP
100W	WID10ZXOP
150W	WID15ZXOP

Heating Capacity	Part Number
100W	ECC-H100W
250W	ECC-H250W
400W	ECC-H400W



**Panel Cooling**  
ENCLOSURE CLIMATE CONTROL



# THERMOSTATS AND HUMIDISTATS

**For use with heaters or fans, including  
Change Over Thermostats, N/C & N/O  
Thermostats, Dual Thermostats and  
Humidistats**

## Thermostats

Part Number	Description
AAFTO12	N/O Thermostat
AAWTC10	N/C Thermostat
C16000385	Dual Thermostat
AAWTS10	Change Over
NOS	Slimline N/O Thermostat
NCS	Slimline N/C Thermostat

## Humidistats

Part Number	Description
AAWHS10	Humidistat
EH1	Electronic Humidistat



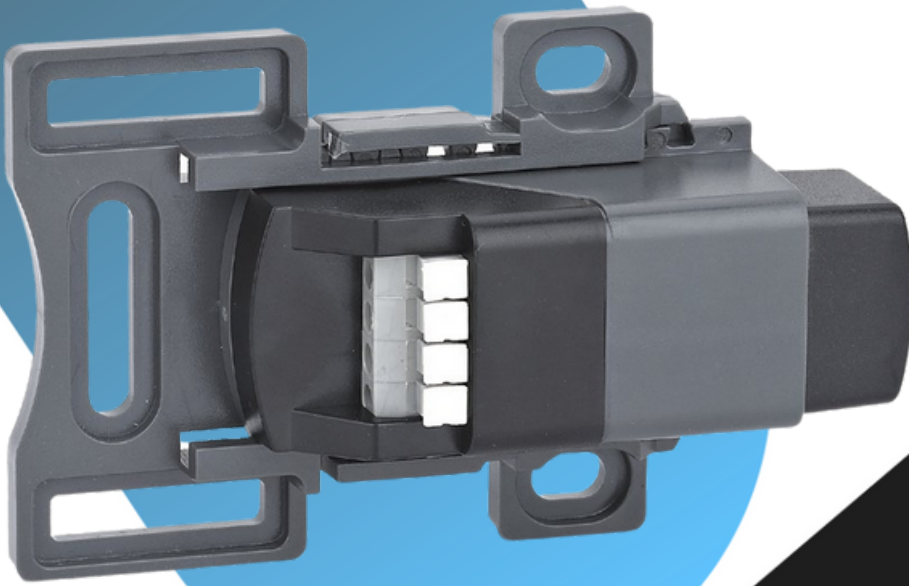
# FILTERS AND FILTER FANS

**IP54 Filter Fan/Filters. 23m<sup>3</sup>/h to 940m<sup>3</sup>/h IP rating can be increased with the use of IP55 cowls available in RAL7035 and Stainless Steel. Can be used in combination with N/O thermostats.**

Part Number	Dimensions	Description
FF204230VAC	204 x 204 x 96mm	105/115 m <sup>3</sup> /h 230V 50-60Hz
FF204115VAC	204 x 204 x 96mm	105/115 m <sup>3</sup> /h 115V 50-60Hz
FF20424VDC	204 x 204 x 96mm	105 m <sup>3</sup> /h 24VDC
FF20424VAC	204 x 204 x 96mm	105 m <sup>3</sup> /h 24VAC
FF20448VDC	204 x 204 x 96mm	105 m <sup>3</sup> /h 48VDC



**Panel Cooling**  
ENCLOSURE CLIMATE CONTROL



## DUAL DOOR SWITCH N/O, N/C

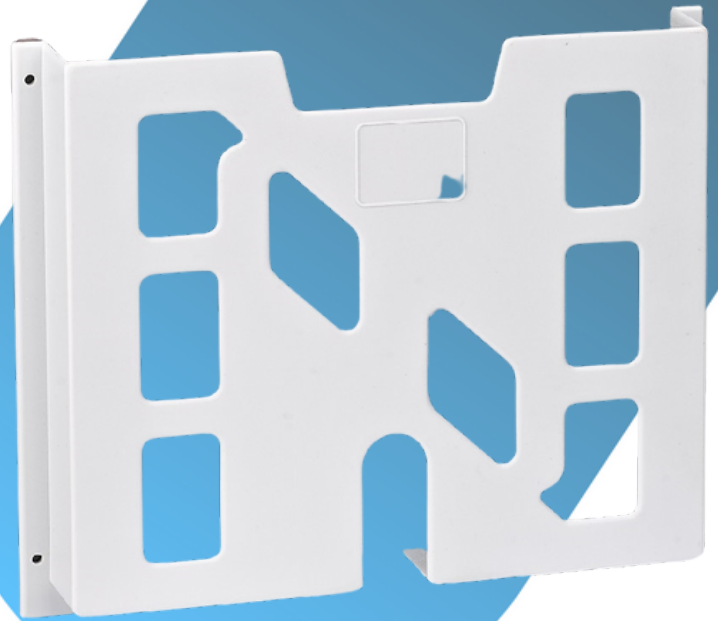
**Dual door switch N/O & N/C that can be used in combination with cooling products and panel lights. Switches off cooling units/filter fans and switches on panel light when the cabinet door is opened**

Part Number	Description
DDS	N/O & N/C Dual Door Switch



# A4 DOCUMENT POCKET

**Robust maintenance/instruction A4  
document holder.**



<b>Part Number</b>	<b>DP</b>
<b>Material</b>	<b>ABS RoHS Compliant</b>
<b>Colour</b>	<b>RAL7035</b>
<b>Installation</b>	<b>Screw mounting or adhesive tape mounting</b>
<b>Dimensions</b>	<b>234×278×40mm</b>



## AC/DC FANS

**High quality, long life ball bearing AC & DC fans.**

Part Number	Dimensions	Voltage
DP200A	120mm x 120mm x 38mm	230VAC
SP100A	120mm x 120mm x 38mm	115VAC
A120B05HTSW00	120mm x 120mm x 38mm	24VAC
EEC0382B1	120mm x 120mm x 38mm	24VDC
SF23080A	80mm x 80mm x 38mm	230VAC
SF11580A	80mm x 80mm x 38mm	115VAC
EE80252B1	80mm x 80mm x 25mm	24VDC



# FILTERS, FINGER GUARDS AND LEADS

Filters can be used when a G4 filter media is not required. Finger guards and leads available.

## Filter Assembly

Part Number	Description
FA80	80mm Filter Assembly
FA120	120mm Filter Assembly

## Leads

Part Number	Description
FL1W	1m Fan lead

## Finger Guards

Part Number	Description
FG80	80mm Metal Filter
FG80P	80mm Plastic Filter
FG120	120mm Metal Filter
FG120P	120mm Plastic Filter



**Panel Cooling**  
ENCLOSURE CLIMATE CONTROL



## CONTACT US

**Enclosure Climate Control**

 **01538 755516**

 **sales@ecc-gb.com**

 **www.ecc-gb.com**

