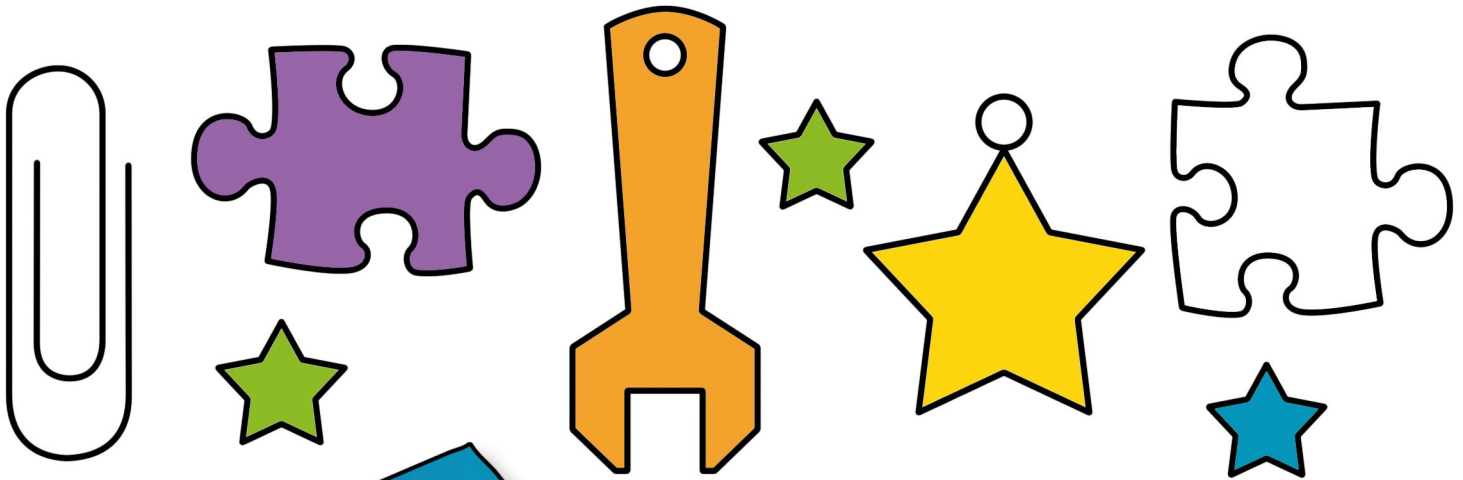
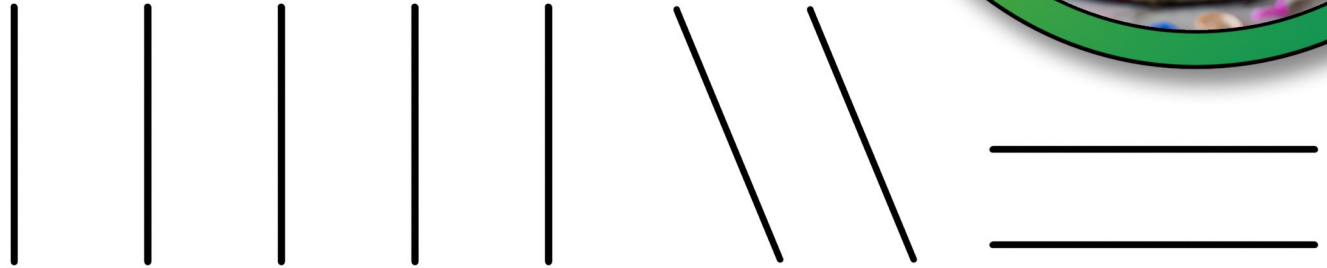


# Practice



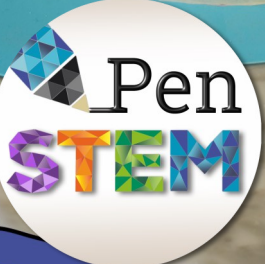
## Work Surfaces

It is important to choose a base that will not be too slick or too adhesive.

Regular paper will stick to the filament and rip. You can overly paper patterns with self-adhesive lamination, tape, or plexiglass. If the plexiglass is too slick you can use a little sandpaper over the surface.

You can print directly onto glossy photo paper but sometimes the ink will transfer onto the plastic.

You can also cover 3D surfaces with masking tape to work from. Hot filament will sag or bend before it has time to cool so it's good to have something to support it

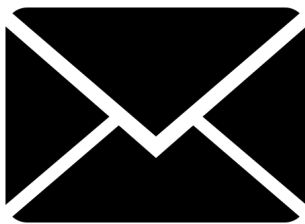


# THANK YOU

For supporting my small business.

I am a mom of four and I am inspired by my kids. I love making resources to help parents, teachers, or individuals enrich their talents and minds.

To view the video tutorials of different projects [click here](#).



If you have any questions or comments  
please feel free to contact me:

[Shay@3DPenSTEM.com](mailto:Shay@3DPenSTEM.com)



To shop for products used in the tutorials here  
are the links:

[Black PLA Filament](#)

[3D Pen](#)

[Self-Adhesive Lamination](#)

[Shiny PLA Filament Colors](#)

[Classroom Set of 3D Pens](#)

I am part of the Amazon affiliate program, and will receive  
commission if you purchase using these links.