

PAASE MEMBERSHIP GUIDELINES*

Original guidelines prepared by the 2011 PAASE Membership Committee. Revisions made by 2018 and the 2021 PAASE Membership Committee. List of members of this committee is given at the end. You can email this committee at paasememcom@gmail.com

FULL MEMBERSHIP

1. An applicant must have a doctorate degree (PhD, DSc, or equivalent) in science or engineering. For fields of specialization PAASE follows the list of the US National Academies in <http://www.nationalacademies.org/>.

2. Full membership is attained by a four-step process: (2.1) Nomination by an active (dues-paying) PAASE Member; (2.2) Pre-election vetting by the Membership Committee; (2.3) Presentation at APAMS; (2.4) Election by 60% of all active PAASE Members.

For any individual, **including a current PAASE associate member, an oral presentation at APAMS or fireside chat is a requirement to be elected to Full PAASE membership.** Thus, an individual's nomination to Full PAASE membership may not be considered complete and will be put on hold until the individual's mandatory delivery of a presentation at APAMS is completed.

3. According to Article 2.1.1 of the PAASE By-laws, "Members shall be restricted to scientists and engineers who have distinguished themselves in their respective fields through research publications or other technical achievements." Research publications include peer-reviewed journal articles, patents, books and technical reports. Other technical achievements include participation in editorial boards, peer review panels, technical advisory boards, etc. Synergistic activities are also considered such as teaching, services to the community (related to science, engineering and technology), collaborative efforts with other researchers (preferably Filipino scientists), Balik-Scientist, etc.

4. The PAASE Nomination Form and CV should be used by the nominator and shall be submitted via Google Forms. Election of new members will be held in September, and the results will be announced no later than the end of October.

5. Upon election by the General Membership, confirmation by Membership Committee, and approval of the Board, the newly elected PAASE member will receive a formal notice of election to PAASE from the Board Secretary. The letter will include information about participation in APAMS and other activities, payment of dues**, benefits of membership etc), an invitation to take his/her oath at the next APAMS, and an option to take it virtually with the BOD on their next meeting if he/she cannot attend APAMS. The Certificate of Membership will be issued after oath-taking.

Payment of membership dues may be sent to PAASE Treasurer (please see PAASE website for details).

PAASE membership is for life. But only those who pay either their annual dues, or their lifetime membership dues can vote, run for office or be members of committees.

ASSOCIATE MEMBERSHIP

1. An applicant must have a doctorate degree (PhD, DSc, or equivalent) in science or engineering. For fields of specialization PAASE follows the list of the US National Academies in <http://www.nationalacademies.org/>. In addition, Associate Member nominees should be within no more than 10 years of their terminal degrees.

2. PAASE Associate membership is attained by a three-step process: (2.1) Nomination by an active (dues-paying) PAASE Member; (2.2) Pre-election vetting by the Membership Committee; (2.3) Vote by 2/3 Vote by 2/3 of PAASE Members of the Board.

3. Section 2.2.1 in the PAASE by-laws describes Associate Members as individuals who have demonstrated ability to do scientific research and show promise for achieving distinction in some fields of science and engineering.

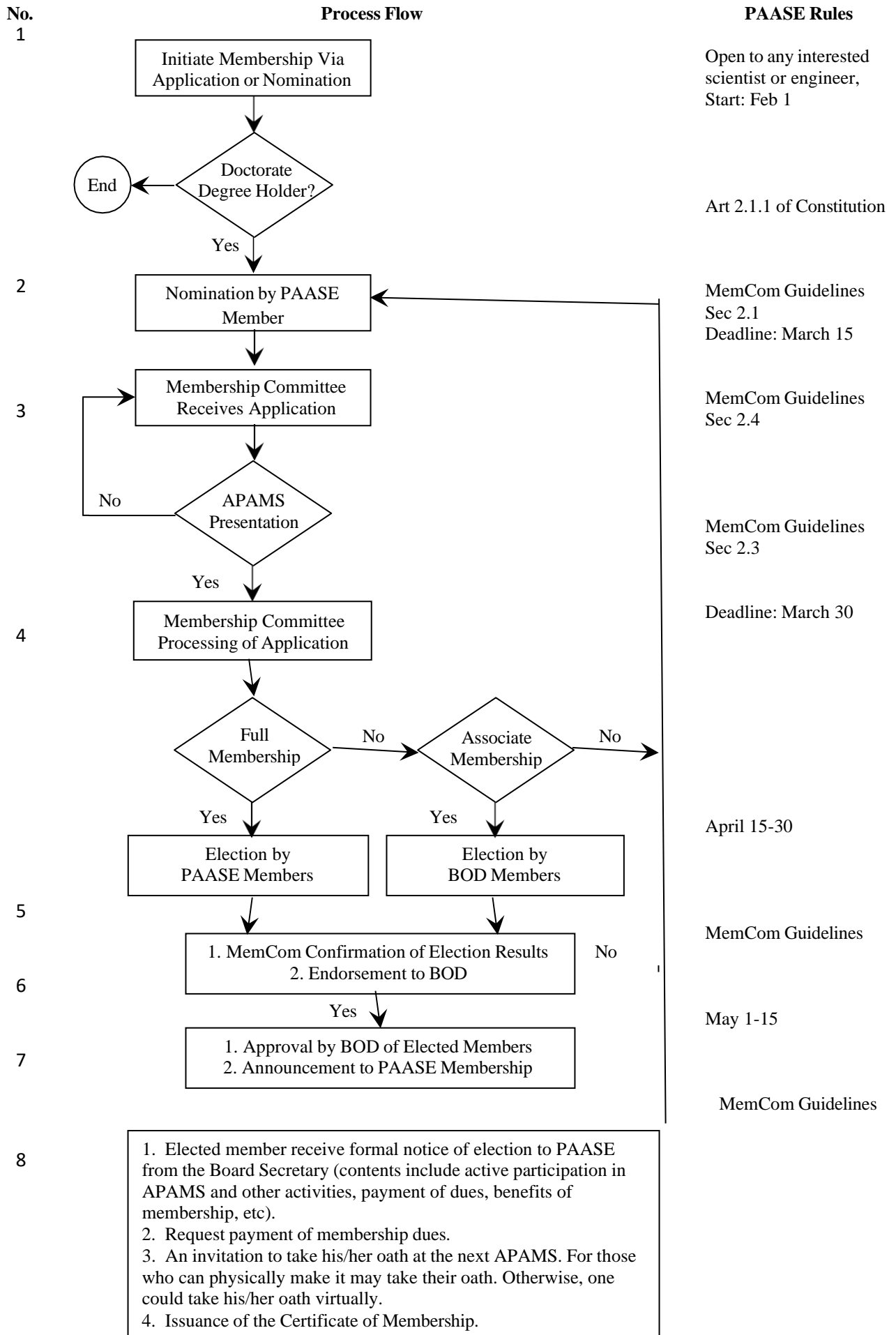
4. The PAASE Nomination Form and CV should be used by the nominator and shall be submitted via Google Forms. Election of new members will be held in September, and the results will be announced no later than the end of October.

5. New Associate Members have a maximum of 10 years between acceptance as Associate Members and promotion to Full Membership. During this period, the Nominator (and/or another senior PAASE member) will be appointed as mentor of the Associate Member.
7. Within 5 years and/or upon recommendation of the mentor, the Associate Member will be reassessed for promotion to Full Membership. This can be thought of as a process similar to getting tenure. However, unlike tenure, the Associate Member may be given additional time should the Membership Committee determines that the Associate Member has not risen to the standards of full membership. The total maximum time for promotion to full membership is 10 years. The Associate Member will be required to submit an updated CV upon their 10 year anniversary. Failure to do so will be interpreted as lack of interest to pursue further PAASE membership.
8. If after 10 years, the Associate Member does not satisfy the requirements for Full Membership, he/she and the mentor will be so notified through an official letter from the Membership Committee.
9. The qualifications for promotion from Associate Membership to Full Membership will be the same as indicated in #3 above for Full Membership Requirements, including an oral presentation at APAMS if the nominee has not presented yet at the time of election to Full Membership. The final step to full membership will be election by 60% of the voting PAASE members.
10. Upon election by the General Membership, confirmation by Membership Committee, and approval of the Board, the newly elected PAASE Associate Member will receive a formal notice of election to PAASE from the Board Secretary. The letter will include information about participation in APAMS and other activities, benefits of membership etc), an invitation to take his/her oath at the next APAMS, and an option to take it virtually with the BOD on their next meeting if he/she cannot attend APAMS. The Certificate of Membership will be issued after oath-taking.
11. Payment of membership dues (50% of annual dues) may be sent to PAASE Treasurer (please see PAASE website for details).

*Please see the attached flowchart for a step-by-step representation of the processes of nomination and election into PAASE.

PAASE MEMBERSHIP COMMITTEE 2024 MEMBERS: *Elmer-Rico Mojica (Chair), Pace University | Rodell Barrientos (Vice-Chair), Merck | Gladys Completo, University of the Philippines Los Banos | Rosalie Hall, University of the Philippines Visayas | Angielyn Lao, De La Salle University | Maria Marjorette Peña, University of South Carolina | Mariano R. Sto. Domingo (Ex-Officio), University of Maryland Baltimore County | Xenia Tigno, National Heart, Lung and Blood Institute, NIH | Eric Vejerano, University of South Carolina | Eiza Yu, University of the Philippines Diliman*

APPLICATION PROCESS FOR PAASE MEMBERSHIP



End