



SANT[®]
VALVES
— SINCE 1953 —

Bronze, Brass,
Cast Iron & Steel Valves

RETAIL PRICE LIST
Dated 20.04.2026

This cancels all our previous lists.



**INTEGRATING, INNOVATING & PIONEERING
FLUID CONTROL SINCE 1953**



ISO : 9001 CERTIFIED COMPANY
ISO : 45001 CERTIFIED COMPANY



For Guaranteed
Trouble-Free Service 

INDEX

Page No.	Item Description	Remarks
1 to 9	BRONZE VALVES ISI & NON ISI (WITH WORKS TEST CERTIFICATE)	
10 to 15	SBM BRONZE VALVES NON-ISI (WITH WORKS TEST CERTIFICATE)	
16 to 26	BRONZE BOILER VALVES & MOUNTINGS (IBR APPROVED & NON IBR)	
27 to 31	CI BOILER VALVES & MOUNTINGS (IBR APPROVED)	
31 to 41	CAST IRON VALVES (WITH WORKS TEST CERTIFICATE) ISI & NON ISI	
42	DUCTILE IRON PRVs	
43 to 49	CAST STEEL VALVES (IBR APPROVED & NON IBR)	
50 to 55	FORGED STEEL VALVES (IBR APPROVED & NON IBR)	
56 to 57	STAINLESS STEEL VALVES (WITH WORKS TEST CERTIFICATE & IBR CERTIFICATE)	
58 to 60	BRASS VALVES (WITH WORKS TEST CERTIFICATE)	
61 to 64	WATER METERS & FLOW METERS (WITH WORKS TEST CERTIFICATE)	



Product : Sant Bronze Gate Valve
 Product Standard : IS-778
 Pressure/Class /Rating : Class-1
 Body Material cum standard : Bronze IS:318 GR LTB-2
 Product Description : Screwed in Bonnet, Inside Screw, Non-Rising Stem
 Type of Seat : Integral seat
 Type of Wedge : Solid wedge
 Trim : Cu-Alloy
 Gland Packing : PTFE
 End Details : Screwed female thread to IS:554 parallel
 Body T.P. : 1.5MPa Hyd.
 Seat T.P. : 1.0MPa Hyd.

IS 1

HSN CODE : 84818030

Size/Inch	mm	Price / Pc.
1/4	8	1410
3/8	10	1410
1/2	15	1628
3/4	20	2185
1	25	3053
1¼	32	4765
1½	40	6342
2	50	9514
2½	65	16143
3	80	23782
4	100	45581



Product : Sant Bronze Gate Valve
 Product Standard : IS-778
 Pressure/Class /Rating : Class-1
 Body Material cum standard : Bronze IS:318 GR LTB-2
 Product Description : Screwed in Bonnet, Inside Screw, Non-Rising Stem
 Type of Seat : Integral seat
 Type of Wedge : Solid wedge
 Trim : Cu-Alloy
 Gland Packing : PTFE
 End Details : Flanges as per IS-778 CI-1 F.F. undrilled
 Body T.P. : 1.5MPa Hyd.
 Seat T.P. : 1.0MPa Hyd.

IS 2

HSN CODE : 84818030

1/2	15	5159
3/4	20	6521
1	25	9413
1¼	32	15062
1½	40	18233
2	50	26160
2½	65	38348
3	80	48595
4	100	86706



Product : Sant Bronze Gate Valve Rising Stem
 Product Standard : IS-778
 Pressure/Class /Rating : Class-1
 Body Material cum standard : Bronze IS:318 GR LTB-2
 Product Description : Screwed in Bonnet, Inside Screw, Rising Stem
 Type of Seat : Integral seat
 Type of Wedge : Solid wedge
 Trim : Cu-Alloy
 Gland Packing : PTFE
 End Details : Screwed female thread to IS:554 parallel
 Body T.P. : 1.5MPa Hyd.
 Seat T.P. : 1.0MPa Hyd.

IS 3

HSN CODE : 84818030

1/4	8	1783
3/8	10	1783
1/2	15	1944
3/4	20	2526
1	25	4212
1¼	32	6143
1½	40	7927
2	50	11990
2½	65	21174
3	80	33691
4	100	61436



Product : Sant Bronze Gate Valve, Flanged Rising Stem
 Product Standard : IS-778
 Pressure/Class /Rating : Class-1
 Body Material cum standard : Bronze IS:318 GR LTB-2
 Product Description : Screwed in Bonnet, Inside Screw, Rising Stem
 Type of Seat : Integral seat
 Type of Wedge : Solid wedge
 Trim : Cu-Alloy
 Gland Packing : PTFE
 End Details : Flanges as per IS-778 CI-1 F.F. undrilled
 Body T.P. : 1.5MPa Hyd.
 Seat T.P. : 1.0MPa Hyd.

IS 4

HSN CODE : 84818030

1/2	15	5945
3/4	20	6936
1	25	9909
1¼	32	12869
1½	40	17737
2	50	28142
2½	65	42411
3	80	49712
4	100	97311



Product : Sant Bronze Gate Valve
 Product Standard : IS-778
 Pressure/Class /Rating : Class-2
 Body Material cum standard : Bronze IS:318 GR LTB-2
 Product Description : Screwed in Bonnet, Inside Screw, Non-Rising Stem
 Type of Seat : Integral seat
 Type of Wedge : Solid wedge
 Trim : Cu-Alloy
 Gland Packing : PTFE
 End Details : Screwed female threads to IS:554 parallel
 Body T.P. : 2.4MPa Hyd.
 Seat T.P. : 1.6MPa Hyd.

Size/Inch	mm	Price / Pc.
1/2	15	1940
3/4	20	2526
1	25	4364
1¼	32	6143
1½	40	7927
2	50	12610
2½	65	22604
3	80	32047
4	100	58845

IS 5

HSN CODE : 84818030



Product : Sant Bronze Gate Valve
 Product Standard : IS-778
 Pressure/Class /Rating : Class-2
 Body Material cum standard : Bronze IS:318 GR LTB-2
 Product Description : Screwed in Bonnet, Inside Screw, Rising Stem
 Type of Seat : Integral seat
 Type of Wedge : Solid wedge
 Trim : Cu-Alloy
 Gland Packing : PTFE
 End Details : Screwed female thread to IS:554 parallel
 Body T.P. : 2.4MPa Hyd.
 Seat T.P. : 1.6MPa Hyd.

1/2	15	2363
3/4	20	2940
1	25	5363
1¼	32	7462
1½	40	9037
2	50	15453
2½	65	28282
3	80	40265
4	100	68305

IS 5A

HSN CODE : 84818030



Product : Sant Bronze Gate Valve
 Product Standard : IS-778
 Pressure/Class /Rating : Class-2
 Body Material cum standard : Bronze IS:318 GR LTB-2
 Product Description : Screwed in Bonnet, Inside Screw, non-rising Stem
 Type of Seat : Integral seat
 Type of Wedge : Solid wedge
 Trim : Cu-Alloy
 Gland Packing : PTFE
 End Details : Flanges as per IS-778 CI-2 F.F. Undrilled
 Test Pressure
 Body T.P. : 2.4MPa Hyd.
 Seat T.P. : 1.6MPa Hyd.

1/2	15	6200
3/4	20	7723
1	25	11196
1¼	32	15260
1½	40	21007
2	50	26461
2½	65	45721
3	80	54968
4	100	111397

IS 6

HSN CODE : 84818030



Product : Sant Bronze Gate Valve
 Product Standard : IS-778
 Pressure/Class /Rating : Class-2
 Body Material cum standard : Bronze IS:318 GR LTB-2
 Product Description : Screwed in Bonnet, Inside Screw, Rising Stem
 Type of Seat : Integral seat
 Type of Wedge : Solid wedge
 Trim : Cu-Alloy
 Gland Packing : PTFE
 End Details : Flanges as per IS-778 CI-2 F.F. undrilled
 Body T.P. : 2.4MPa Hyd.
 Seat T.P. : 1.6MPa Hyd.

1/2	15	6679
3/4	20	8252
1	25	11990
1¼	32	15379
1½	40	20413
2	50	29648
2½	65	45301
3	80	62739
4	100	125268

IS 6A

HSN CODE : 84818030



Product : Sant Bronze Gate Valve
 Product Standard : IS-778:1971
 Pressure/Class /Rating : Class-3
 Body Material cum standard : Bronze IS:318 GR LTB-2
 Product Description : Screwed in Bonnet, Inside Screw, Non-Rising Stem
 Type of Seat : Integral seat
 Type of Wedge : Solid wedge
 Trim : Cu-Alloy
 Gland Packing : PTFE
 End Details : Screwed female threads to IS:554 parallel
 Body T.P. : 50kgf/cm² Hyd.
 Seat T.P. : 40kgf/cm² Hyd.

Size/Inch	mm	Price / Pc.
1/2	15	3997
3/4	20	4576
1	25	6417
1¼	32	9154
1½	40	11891
2	50	18277

IS 7

Without ISI Mark

HSN CODE : 84818030



Product : Sant Bronze Vertical Lift Check Valve
 Product Standard : IS-778
 Pressure/Class /Rating : Class-1
 Body Material cum standard : Bronze IS:318 GR LTB-2
 Product Description :
 Type of Seat : Integral seat
 Trim : Cu-Alloy
 End Details : Screwed female threads to IS:554 (parallel)
 Body T.P. : 1.5MPa Hyd.
 Seat T.P. : 1.0MPa Hyd.

1/2	15	1099
3/4	20	1473
1	25	2150
1¼	32	3156
1½	40	4156
2	50	5838
2½	65	11098
3	80	16647
4	100	33691

IS 8

HSN CODE : 84813000



Product : Sant Bronze Globe Valve
 Product Standard : IS-778
 Pressure/Class /Rating : Class-1
 Body Material cum standard : Bronze IS:318 GR LTB-2
 Product Description : Screwed in Bonnet, Inside Screw, Rising Stem
 Type of Seat : Integral seat
 Trim : Cu-Alloy
 Gland Packing : PTFE
 End Details : Screwed female threads IS-554 Parallel
 Body T.P. : 1.5MPa Hyd.
 Seat T.P. : 1.0MPa Hyd.

1/4	8	1251
3/8	10	1251
1/2	15	1368
3/4	20	1944
1	25	3155
1¼	32	4756
1½	40	6937
2	50	9909
2½	65	18233
3	80	29331
4	100	49149

IS 9

HSN CODE : 84818030



Product : Sant Bronze Globe Valve
 Product Standard : IS-778
 Pressure/Class /Rating : Class-1
 Body Material cum standard : Bronze IS:318 GR LTB-2
 Product Description : Screwed in Bonnet, Inside Screw, Rising Stem
 Type of Seat : Integral seat
 Trim : Cu-Alloy
 Gland Packing : PTFE
 End Details : Flanges as per IS-778 CI-1 FF (undrilled)
 Body T.P. : 1.5MPa Hyd.
 Seat T.P. : 1.0MPa Hyd.

1/2	15	5159
3/4	20	6501
1	25	9513
1¼	32	13873
1½	40	17578
2	50	27249
2½	65	40032
3	80	54698
4	100	82047

IS 10

HSN CODE : 84818030



Product : Sant Bronze Globe Valve
 Product Standard : IS-778
 Pressure/Class /Rating : Class-2
 Body Material cum standard : Bronze IS:318 GR LTB-2
 Product Description : Screwed in Bonnet, Inside Screw, Rising Stem
 Type of Seat : Integral seat
 Trim : Cu-Alloy
 Gland Packing : PTFE
 End Details : Screwed female threads to IS:554 parallel
 Test Pressure
 Body T.P. : 2.4MPa Hyd.
 Seat T.P. : 1.6MPa Hyd.

IS 11

HSN CODE : 84818030

Size/Inch	mm	Price / Pc.
1/4	8	1251
3/8	10	1347
1/2	15	1585
3/4	20	2363
1	25	3620
1¼	32	5153
1½	40	7333
2	50	10979
2½	65	18828
3	80	30123
4	100	51527



Product : Sant Bronze Globe Valve
 Product Standard : IS-778
 Pressure/Class /Rating : Class-2
 Body Material cum standard : Bronze IS:318 GR LTB-2
 Product Description : Screwed in Bonnet, Inside Screw, Rising Stem
 Type of Seat : Integral seat
 Trim : Cu-Alloy
 Gland Packing : PTFE
 End Details : Flanges as per IS-778 CI-2, F.F. (undrilled)
 Test Pressure
 Body T.P. : 2.4MPa Hyd.
 Seat T.P. : 1.6MPa Hyd.

IS 12

HSN CODE : 84818030

1/2	15	5416
3/4	20	7016
1	25	9909
1¼	32	13773
1½	40	17855
2	50	27230
2½	65	40032
3	80	56283
4	100	81964



Product : Sant Bronze Globe Valve
 Product Standard : IS-778:1971
 Pressure/Class /Rating : Class-3
 Body Material cum standard : Bronze IS:318 GR LTB-2
 Product Description : Screwed in Bonnet, Inside Screw, Rising Stem
 Type of Seat : Integral seat
 Trim : Cu-Alloy
 Gland Packing : PTFE
 End Details : Screwed female threads IS-554 Parallel
 Test Pressure :
 Body T.P. : 50kgf/cm² Hyd.
 Seat T.P. : 40kgf/cm² Hyd.

IS 13

Without ISI Mark

HSN CODE : 84818030

1/2	15	5416
3/4	20	6776
1	25	9303
1¼	32	12812
1½	40	17855
2	50	21265
2½	65	38876
3	80	48452
4	100	81963



Product : Sant Bronze Horizontal Lift Check Valve
 Product Standard : IS-778
 Pressure/Class /Rating : Class-1
 Body Material cum standard : Bronze IS:318 GR LTB-2
 Product Description : Screwed in Cover
 Type of Seat : Integral seat
 Trim : Cu-Alloy
 End Details : Screwed female threads IS-554 Parallel
 Body T.P. : 1.5MPa Hyd.
 Seat T.P. : 1.0MPa Hyd.

IS 14

HSN CODE : 84813000

1/2	15	1212
3/4	20	1783
1	25	2940
1¼	32	4439
1½	40	6738
2	50	10305
2½	65	17757
3	80	27702
4	100	45185



Product : Sant Bronze Horizontal Lift Check Valve
 Product Standard : IS-778
 Pressure/Class /Rating : Class-2
 Body Material cum standard : Bronze IS:318 GR LTB-2
 Product Description : Screwed in Cover
 Type of Seat : Integral seat
 Trim : Cu-Alloy
 End Details : Screwed female threads IS-554 Parallel
 Body T.P. : 2.4MPa Hyd.
 Seat T.P. : 1.6MPa Hyd.

Size/Inch	mm	Price / Pc.
1/2	15	1308
3/4	20	2225
1	25	3410
1¼	32	4838
1½	40	6566
2	50	10979
2½	65	17605
3	80	26794
4	100	48158

IS 14A

HSN CODE : 84813000



Product : Sant Bronze Horizontal Lift Check Valve
 Product Standard : IS-778
 Pressure/Class /Rating : Class-1
 Body Material cum standard : Bronze IS:318 GR LTB-2
 Product Description : Screwed in Cover
 Type of Seat : Integral seat
 Trim : Cu-Alloy
 End Details : Flanges as per IS:778 Class-1 F.F. (Undrilled)
 Body T.P. : 1.5MPa Hyd.
 Seat T.P. : 1.0MPa Hyd.

1/2	15	5094
3/4	20	5930
1	25	8720
1¼	32	14269
1½	40	17836
2	50	27745
2½	65	38526
3	80	52716
4	100	75308

IS 15

HSN CODE : 84813000



Product : Sant Bronze Horizontal Lift Check Valve
 Product Standard : IS-778
 Pressure/Class /Rating : Class-2
 Body Material cum standard : Bronze IS:318 GR LTB-2
 Product Description : Screwed in Cover
 Type of Seat : Integral seat
 Trim : Cu-Alloy
 End Details : Flanges as per IS:778 Class-2 F.F. (Undrilled)
 Body T.P. : 2.4MPa Hyd.
 Seat T.P. : 1.6MPa Hyd.

1/2	15	5416
3/4	20	8063
1	25	9154
1¼	32	15780
1½	40	23689
2	50	27349
2½	65	38161
3	80	47922
4	100	82188

IS 15A

HSN CODE : 84813000



Product : Sant Bronze Swing Check Valve
 Product Standard : IS-778
 Pressure/Class /Rating : Class-1
 Body Material cum standard : Bronze IS:318 GR LTB-2
 Product Description : Screwed in Cover
 Type of Seat : Integral seat
 Trim : Cu-Alloy
 End Details : Screwed female threads IS-554 Parallel
 Body T.P. : 1.5MPa Hyd.
 Seat T.P. : 1.0MPa Hyd.

1/2	15	1388
3/4	20	2313
1	25	3778
1¼	32	5351
1½	40	6937
2	50	10305

IS 16

HSN CODE : 84813000



Product : Sant Bronze Foot Valve
 Pressure Rating : PN 20
 Body Material cum standard : Bronze IS:318 GR LTB-2
 Product Description : 2 Piece design with Synthetic rubber O'ring
 Type of Seat : Integral seat
 End Details : Screwed female threads IS-554 Parallel
 Body T.P. : 30 kg/cm²g Hyd.
 Seat T.P. : 20 kg/cm²g Hyd.

Size/Inch	mm	Price / Pc.
1/2	15	872
3/4	20	1251
1	25	1682
1¼	32	2775
1½	40	3330
2	50	4955
2½	65	6738
3	80	8324
4	100	17836

IS 21

HSN CODE : 84813000



Product : Sant Bronze Right Angle Globe Valve No. 4
 Pressure Rating : PN 16
 Type of Pattern : Angle Type
 Body Material cum standard : Bronze IS:318 GR LTB-2
 Product Description : Screwed in bonnet inside screw rising stem
 Type of Seat : Integral Seat
 Trim : Cu Alloy
 Gland Packing : Asbestos
 End Details : Screwed female threads BSP (Parallel)
 Body T.P. : 24 kg/cm²g Hyd.
 Seat T.P. : 16kg/cm²g Hyd.

1/2	15	1030
3/4	20	2141
1	25	3627
1¼	32	4756
1½	40	6738
2	50	8937
2½	65	16924
3	80	25966
4	100	43310

IS 22

HSN CODE : 84818030



Product : Sant Bronze Right Angle Lift Check Valve
 Pressure Rating : PN 16
 Type of Pattern : Angle Type
 Body Material cum standard : Bronze IS:318 GR LTB-2
 Product Description : Screwed in Cover
 Type of Seat : Integral Seat
 Trim : Cu Alloy
 End Details : Screwed female threads BSP (Parallel)
 Body T.P. : 24 kg/cm²g Hyd.
 Seat T.P. : 16kg/cm²g Hyd.

1/2	15	991
3/4	20	1944
1	25	3437
1¼	32	4256
1½	40	6501
2	50	9909
2½	65	16647
3	80	24978
4	100	49545

IS 23

HSN CODE : 84813000



Product : Sant Bronze Sight Glass
 Body Material cum standard : Bronze IS:318 Gr. LTB 2
 End Details : Screwed Female Thread BSP Parallel Thread
 Test Pressure. : 500Psig. Hyd.

1	25	4349

IS 24

HSN CODE : 84818020



Product : Sant Bronze Gate Valve
 Product Standard : As per IS-778
 Pressure/Class/Rating : Class-1
 Body Material cum standard : Bronze IS:318 GR LTB-2
 Product Description : Screwed In Bonnet, outside screw & Yoke Type
 Rising Stem
 Type of Seat : Integral Seat
 Type of Wedge : Solid Wedge
 Trim : Cu-Alloy
 Gland Packing : PTFE
 End Details : Screwed female threads to IS-554 Parallel
 Body Test Pressure : 1.5MPa Hyd.
 Seat Test Pressure : 1.0MPa Hyd.

Size/Inch	mm	Price / Pc.
1/2	15	2623
3/4	20	3173
1	25	5748
1¼	32	7134
1½	40	12287
2	50	15854
2½	65	25446
3	80	37563
4	100	71694

IS 31

HSN CODE : 84818030



Product : Sant Bronze Gate Valve
 Product Standard : As per IS-778
 Pressure/Class/Rating : Class-2
 Body Material cum standard : Bronze IS:318 GR LTB-2
 Product Description : Screwed In Bonnet, outside screw & Yoke Type
 Rising Stem
 Type of Seat : Integral Seat
 Type of Wedge : Solid Wedge
 Trim : Cu-Alloy
 Gland Packing : PTFE
 End Details : Screwed female threads to IS-554 Parallel
 Body Test Pressure : 2.4MPa Hyd.
 Seat Test Pressure : 1.6MPa Hyd.

1/2	15	2824
3/4	20	3531
1	25	4946
1¼	32	7871
1½	40	12285
2	50	14741
2½	65	25850
3	80	39584
4	100	72699

IS 33

HSN CODE : 84818030



Product : Sant Bronze Globe Valve
 Product Standard : As per IS-778
 Pressure/Class/Rating : Class-1
 Body Material cum standard : Bronze IS:318 GR LTB-2
 Product Description : Screwed In Bonnet, outside screw & Yoke Type
 Rising Stem
 Type of Seat : Integral Seat
 Trim : Cu-Alloy
 Gland Packing : PTFE
 End Details : Screwed female threads to IS-554 Parallel
 Body Test Pressure : 1.5MPa Hyd.
 Seat Test Pressure : 1.0MPa Hyd.

1/2	15	2013
3/4	20	2656
1	25	4505
1¼	32	6461
1½	40	10299
2	50	14665

IS 34

HSN CODE : 84818030



Product : Sant Bronze Globe Valve
 Product Standard : As per IS-778
 Pressure/Class/Rating : Class-2
 Body Material cum standard : Bronze IS:318 GR LTB-2
 Product Description : Screwed In Bonnet, outside screw & Yoke Type
 Rising Stem
 Type of Seat : Integral Seat
 Trim : Cu-Alloy
 Gland Packing : PTFE
 End Details : Screwed female threads to IS-554 Parallel
 Body Test Pressure : 2.4MPa Hyd.
 Seat Test Pressure : 1.6MPa Hyd.

1/2	15	2378
3/4	20	3171
1	25	4594
1¼	32	7134
1½	40	11494
2	50	13528

IS 34 A

HSN CODE : 84818030



Product : Sant Bronze Swing Check Valve
Product Standard : As per IS-778
Pressure/Class/Rating : Class-2
Body Material cum standard : Bronze IS:318 GR LTB-2
Product Description : Screwed In Cover
Type of Seat : Integral Seat
Trim : Cu-Alloy
End Details : Screwed female threads to IS-554 Parallel
Body Test Pressure : 2.4MPa Hyd.
Seat Test Presuure : 1.6MPa Hyd.

IS 35 A

HSN CODE : 84813000

Size/Inch	mm	Price / Pc.
1/2	15	1585
3/4	20	2442
1	25	3938
1¼	32	5504
1½	40	8078
2	50	12523



Product : SBM Bronze Gate Valve
 Type of Pattern : Peglar Type PN-20
 Body Material cum standard : Bronze IS:318 Gr. LTB 2
 Product Description : Screwed in bonnet inside screw non rising stem
 Type of Seat : Integral Seat
 Type of Disc : Solid Wedge
 Trim : Cu-Alloy
 Gland Packing : PTFE
 End Details : Screwed female BSP threads to BS-21
 Body Test Pressure : 30 kg/cm²g Hyd.
 Seat Test Pressure : 20 kg/cm²g Hyd.

Size/Inch	mm	Price / Pc.
1/4	8	1110
3/8	10	1110
1/2	15	1189
3/4	20	1664
1	25	2616
1¼	32	3211
1½	40	4756
2	50	7134
2½	65	16251
3	80	19818
4	100	40825

SBM 1

HSN CODE : 84818030



Product : SBM Bronze Gate Valve
 Pressure Rating : PN 20
 Type of Pattern : Standard Pattern
 Body Material cum standard : Bronze IS:318 Gr. LTB 2
 Product Description : Screwed in bonnet inside screw non rising stem
 Type of Seat : Integral Seat
 Type of Disc : Solid Wedge
 Trim : Cu-Alloy
 Gland Packing : PTFE
 End Details : Screwed female BSP threads to BS-21
 Body Test Pressure : 30 kg/cm²g Hyd.
 Seat Test Pressure : 20 kg/cm²g Hyd.

1/4	8	1464
3/8	10	1464
1/2	15	1672
3/4	20	2516
1	25	3370
1¼	32	4756
1½	40	7293
2	50	10702
2½	65	17440
3	80	28538
4	100	44356

SBM 2

HSN CODE : 84818030



Product : SBM Bronze Gate Valve Flanged
 Pressure Rating : PN 20
 Type of Pattern : Standard Pattern
 Body Material cum standard : Bronze IS:318 Gr. LTB 2
 Product Description : Screwed in bonnet inside screw non rising stem
 Type of Seat : Integral Seat
 Type of Disc : Solid Wedge
 Trim : Cu-Alloy
 Gland Packing : PTFE
 End Details : Flanges as per BS 10 Table D F.F. Undrilled
 Body Test Pressure : 30 kg/cm²g Hyd.
 Seat Test Pressure : 20 kg/cm²g Hyd.

1/2	15	5153
3/4	20	6342
1	25	9711
1¼	32	12287
1½	40	17043
2	50	22593
2½	65	34087
3	80	47960
4	100	83236
5	125	129907
6	150	250862

SBM 3

HSN CODE : 84818030



Product : SBM Bronze Globe Valve No. 4
 Pressure Rating : PN 16
 Type of Pattern : Medium Duty
 Body Material cum standard : Bronze IS:318 Gr. LTB 2
 Product Description : Screwed in bonnet inside screw rising stem
 Type of Seat : Integral Seat
 Type of Disc : Renewable Disc
 Trim : Cu-Alloy
 Gland Packing : PTFE
 End Details : Screwed female BSP threads to BS-21
 Body Test Pressure : 24 kg/cm²g Hyd.
 Seat Test Pressure : 16 kg/cm²g Hyd.

1/4	8	634
3/8	10	733
1/2	15	833
3/4	20	1348
1	25	1982
1¼	32	3667
1½	40	5153
2	50	7927
2½	65	17639
3	80	24297
4	100	38051

SBM 5



Product : SBM Bronze Globe Valve No. 8
 Pressure Rating : PN 16
 Type of Pattern : Medium Pattern
 Body Material cum standard : Bronze IS:318 Gr. LTB 2
 Product Description : Screwed in bonnet inside screw rising stem
 Type of Seat : Integral Seat
 Type of Disc : Renewable Disc
 Trim : Cu-Alloy
 Gland Packing : PTFE
 End Details : Flanges as per BS 10 Table D
 Body Test Pressure : 24 kg/cm²g Hyd.
 Seat Test Pressure : 16 kg/cm²g Hyd.

SBM 6

HSN CODE : 84818030

Size/Inch	mm	Price / Pc.
1/2	15	3964
3/4	20	5034
1	25	7927
1¼	32	9909
1½	40	13576
2	50	19025
2½	65	31709
3	80	41221
4	100	67381
5	125	105385



Product : SBM Bronze Globe Valve No. 5
 Pressure Rating : PN 20
 Type of Pattern : Standard Pattern
 Body Material cum standard : Bronze IS:318 Gr. LTB 2
 Product Description : Screwed in bonnet inside screw rising stem
 Type of Seat : Integral Seat
 Type of Disc : Renewable Disc
 Trim : Cu-Alloy
 Gland Packing : PTFE
 End Details : Screwed female BSP threads to BS-21
 Body Test Pressure : 30 kg/cm²g Hyd.
 Seat Test Pressure : 20 kg/cm²g Hyd.

SBM 7

HSN CODE : 84818030

1/4	8	879
3/8	10	946
1/2	15	1429
3/4	20	2141
1	25	3686
1¼	32	5153
1½	40	7134
2	50	11098
2½	65	20611
3	80	29727
4	100	44635



Product : SBM Bronze Globe Valve No. 9
 Pressure Rating : PN 20
 Type of Pattern : Standard Pattern
 Body Material cum standard : Bronze IS:318 Gr. LTB 2
 Product Description : Screwed in bonnet inside screw rising stem
 Type of Seat : Integral Seat
 Type of Disc : Renewable Disc
 Trim : Cu-Alloy
 Gland Packing : PTFE
 End Details : Flanges as per BS 10 Table F Undrilled
 Body Test Pressure : 30 kg/cm²g Hyd.
 Seat Test Pressure : 20 kg/cm²g Hyd.

SBM 8

HSN CODE : 84818030

1/2	15	5135
3/4	20	6342
1	25	10504
1¼	32	14031
1½	40	18233
2	50	26437
2½	65	42807
3	80	55094
4	100	83632



Product : SBM Bronze Horizontal Lift Check Valve No. 4
 Pressure Rating : PN 16
 Type of Pattern : Standard Pattern
 Body Material cum standard : Bronze IS:318 Gr. LTB 2
 Product Description : Screwed in cover
 Type of Seat : Integral Seat
 Type of Disc : Renewable Disc
 Trim : Cu-Alloy
 End Details : Screwed female BSP threads to BS-21
 Body Test Pressure : 24 kg/cm²g Hyd.
 Seat Test Pressure : 16 kg/cm²g Hyd.

SBM 9

HSN CODE : 84813000

1/4	8	634
3/8	10	654
1/2	15	733
3/4	20	1149
1	25	1903
1¼	32	3684
1½	40	4574
2	50	7359
2½	65	14864
3	80	21007
4	100	38051



Product : SBM Bronze Horizontal Lift Check Valve No. 8
 Pressure Rating : PN 16
 Type of Pattern : Standard Pattern
 Body Material cum standard : Bronze IS:318 Gr. LTB 2
 Product Description : Screwed in cover
 Type of Seat : Integral Seat
 Type of Disc : Renewable Disc
 Trim : Cu-Alloy
 End Details : Flanges as per BS 10 Table-D Undrilled
 Gasket :
 Body Test Pressure : 24 kg/cm²g Hyd.
 Seat Test Pressure : 16 kg/cm²g Hyd.

SBM 10

HSN CODE : 84813000

Size/Inch	mm	Price / Pc.
1/2	15	4162
3/4	20	4955
1	25	8324
1¼	32	9949
1½	40	13476
2	50	18431
2½	65	28776
3	80	35912
4	100	59929
5	125	118908



Product : SBM Bronze Horizontal Lift Check Valve No. 5
 Pressure Rating : PN 20
 Type of Pattern : Heavy Pattern
 Body Material cum standard : Bronze IS:318 Gr. LTB 2
 Product Description : Screwed in cover
 Type of Seat : Integral Seat
 Type of Disc : Renewable Disc
 Trim : Cu-Alloy
 End Details : Screwed female BSP threads to BS-21
 Body Test Pressure : 30 kg/cm²g Hyd.
 Seat Test Pressure : 20 kg/cm²g Hyd.

SBM 11

HSN CODE : 84813000

1/2	15	1111
3/4	20	2061
1	25	3171
1¼	32	4955
1½	40	6342
2	50	9631
2½	65	20841
3	80	26952
4	100	53255



Product : SBM Bronze Horizontal Lift Check Valve No. 9
 Pressure Rating : PN 20
 Type of Pattern : Heavy Pattern
 Body Material cum standard : Bronze IS:318 Gr. LTB 2
 Product Description : Screwed in cover
 Type of Seat : Integral Seat
 Type of Disc : Renewable Disc
 Trim : Cu-Alloy
 End Details : Flanges as per BS 10 Table F Undrilled
 Body Test Pressure : 30 kg/cm²g Hyd.
 Seat Test Pressure : 20 kg/cm²g Hyd.

SBM 12

HSN CODE : 84813000

1/2	15	4559
3/4	20	6540
1	25	10702
1¼	32	12420
1½	40	16273
2	50	19422
2½	65	39240
3	80	58114
4	100	68967



Product : SBM Bronze Vertical Lift Check Valve
 Type of Pattern : Standard Pattern
 Body Material cum standard : Bronze IS:318 Gr. LTB 2
 Type of Seat : Integral Seat
 Type of Disc : Renewable Disc
 Trim : Cu-Alloy
 End Details : Screwed female BSP threads to BS-21
 Body Test Pressure : 24 kg/cm²g Hyd.
 Seat Test Pressure : 16 kg/cm²g Hyd.

SBM 13

HSN CODE : 84813000

1/2	15	718
3/4	20	1032
1	25	1636
1¼	32	2427
1½	40	3165
2	50	4216
2½	65	10702
3	80	16251
4	100	29727



Product : SBM Bronze Union Bonnet Globe Valve
 Product Standard : Conforming to IS 778 Class-2
 Pressure/Class /Rating : PN-25
 Body Material cum standard : Bronze IS:318 Gr. LTB 2
 Product Description : Screwed on bonnet inside screw rising stem
 Type of Seat : Renewable Seat
 Type of Disc : Renewable Disc
 Trim : SS AISI-410
 Gland Packing : Graphited Asbestos
 End Details : Screwed Female BSP Threads to IS 554 Parallel
 Body Test Pressure : 40 kg/cm²g Hyd.
 Seat Test Pressure : 25 kg/cm²g Hyd.

SBM 14

HSN CODE : 84818030

Size/Inch	mm	Price / Pc.
1/4	8	1704
3/8	10	1844
1/2	15	2623
3/4	20	3891
1	25	5834
1¼	32	8389
1½	40	11891
2	50	17832
2½	65	31709
3	80	50933
4	100	81865



Product : SBM Bronze Union Bonnet Globe Valve
 Product Standard : Conforming to IS 778 Class-2
 Pressure/Class /Rating : PN-25
 Body Material cum standard : Bronze IS:318 Gr. LTB 2
 Product Description : Screwed on bonnet screw rising stem
 Type of Seat : Renewable Seat
 Type of Disc : Renewable Disc
 Trim : SS 410
 Gland Packing : Graphited Asbestos
 End Details : Flanges as per BS 10 Table F Undrilled
 Body Test Pressure : 40 kg/cm²g Hyd.
 Seat Test Pressure : 25 kg/cm²g Hyd..

SBM 15

HSN CODE : 84818030

1/2	15	7134
3/4	20	8919
1	25	14269
1¼	32	17043
1½	40	24178
2	50	35672
2½	65	53905
3	80	76497
4	100	121189



Product : SBM Bronze Union Bonnet Horizontal Lift Check Valve
 Product Standard : conforming to IS 778 Class 2
 Pressure/Class /Rating : PN-25
 Body Material cum standard : Bronze IS:318 Gr. LTB 2
 Product Description : Screwed on cover
 Type of Seat : Renewable Seat
 Type of Disc : Renewable Disc
 Trim : SS-410
 End Details : Screwed Female Threads to IS 554 Parallel
 Body Test Pressure : 40 kg/cm²g Hyd.
 Seat Test Pressure : 25 kg/cm²g Hyd..

SBM 16

HSN CODE : 84813000

1/2	15	2117
3/4	20	3506
1	25	5363
1¼	32	10725
1½	40	12478
2	50	17264
2½	65	32346
3	80	49941
4	100	81333



Product : SBM Bronze Union Bonnet Horizontal Lift Check Valve
 Product Standard : Conforming to IS 778 Class-2
 Pressure/Class /Rating : PN-25
 Body Material cum standard : Bronze IS:318 Gr. LTB 2
 Product Description : Screwed on Cover
 Type of Seat : Renewable Seat
 Type of Disc : Renewable Disc
 Trim : SS 410
 End Details : Flanges as per BS 10 Table-F Undrilled
 Body Test Pressure : 40 kg/cm²g Hyd.
 Seat Test Pressure : 25 kg/cm²g Hyd..

SBM 17

HSN CODE : 84813000

1/2	15	a6342
3/4	20	8324
1	25	12486
1¼	32	16647
1½	40	22791
2	50	32898
2½	65	47830
3	80	71752
4	100	112419



Product : Sant Bronze Globe Steam Stop Valve
 Type of Pattern : Straight Type
 Body Material cum standard : Bronze IBR Clause 282 (a) IV GrB
 Product Description : Screwed in bonnet inside screw rising stem
 Type of Seat : Renewable Seat
 Type of Disc : Renewable Disc
 Trim : SS AISI-410
 Gland Packing : Expanded Pure Flexible Graphite
 End Details : Screwed female BSP Taper Threads to BS 21
 Test Pressure : Tested to 500Psig. Hyd. (35.15 kg/cm² (Hyd.))
 Working Pressure : Max. BOP 250Psig.(17.58kg/cm²) at 435°F(225°C)

Size/Inch	mm	Price / Pc.
1/4	8	4826
3/8	10	4826
1/2	15	5001
3/4	20	6079
1	25	8911
1¼	32	13360
1½	40	18138
2	50	26387

IBR 1A

HSN CODE : 84818030



Product : Sant Bronze Globe Steam Stop Valve
 Type of Pattern : Straight Type
 Body Material cum standard : Bronze IBR Clause 282 (a) IV GrB
 Product Description : Screwed in bonnet inside screw rising stem
 Type of Seat : Renewable Seat
 Type of Disc : Renewable Disc
 Trim : SS AISI-410
 Gland Packing : Expanded Pure Flexible Graphite
 End Details : Flanged as per BS 10 Table-H F.F. (undrilled)
 Test Pressure : Tested to 500Psig. Hyd. (35.15 kg/cm² (Hyd.))
 Working Pressure : Max. BOP 250Psig.(17.58kg/cm²) at 435°F(225°C)

1/2	15	11088
3/4	20	12054
1	25	16118
1¼	32	24368
1½	40	27231
2	50	42403

IBR 1B

HSN CODE : 84818030



Product : Sant Bronze Globe Steam Stop Valve
 Type of Pattern : Straight Type
 Body Material cum standard : Bronze IBR Clause 282 (a) IV GrB
 Product Description : Screwed in bonnet inside screw rising stem
 Type of Seat : Renewable Seat
 Type of Disc : Renewable Disc
 Trim : SS AISI-410
 Gland Packing : Expanded Pure Flexible Graphite
 End Details : Flanges as per BS 10 Table F (undrilled)
 Test Pressure : Tested to 300Psig. Hyd. (21.09 kg/cm² (Hyd.))
 Working Pressure : Max. BOP 150Psig.(10.54kg/cm²) at 435°F(225°C)

1/2	15	9612
3/4	20	11410
1	25	15694
1¼	32	23888
1½	40	25734
2	50	42403

IBR 1C

HSN CODE : 84818030



Product : Sant Bronze Globe Steam Stop Valve
 Type of Pattern : Straight Type
 Body Material cum standard : Bronze IBR Clause 282 (a) IV GrB
 Product Description : Bolted bonnet O/S & Yoke type rising stem
 Type of Seat : Renewable Seat
 Type of Disc : Renewable Disc
 Trim : SS AISI-410
 Gland Packing : Expanded Pure Flexible Graphite
 End Details : Screwed female BSP Taper Threads to BS 21
 Test Pressure : Tested to 500Psig. Hyd. (35.15 kg/cm² (Hyd.))
 Working Pressure : Max. BOP 250Psig.(17.58kg/cm²) at 435°F(225°C)

3/8	10	7163
1/2	15	7216
3/4	20	9985
1	25	15310
1¼	32	30085
1½	40	44409
2	50	54065
2½	65	88719
3	80	106191

IBR 2A

HSN CODE : 84818030



Product : Sant Bronze Globe Steam Stop Valve
 Type of Pattern : Straight Type
 Body Material cum standard : Bronze IBR Clause 282 (a) IV GrB
 Product Description : Bolted Bonnet outside screw & Yoke type rising stem
 Type of Seat : Renewable Seat
 Type of Disc : Renewable Disc
 Trim : SS AISI-410
 Gland Packing : Expanded Pure Flexible Graphite
 End Details : Flanged as per BS 10 Table-H F.F. undrilled
 Test Pressure : Tested to 500Psig. Hyd. (35.15 kg/cm² (Hyd.))
 Working Pressure : Max. BOP 250Psig.(17.58kg/cm²) at 435°F(225°C)

Size/Inch	mm	Price / Pc.
1/2	15	17709
3/4	20	20312
1	25	27579
1¼	32	42141
1½	40	59173
2	50	85774
2½	65	105323
3	80	142238
4	100	197614

IBR 2B

HSN CODE : 84818030



Product : Sant Bronze Globe Steam Stop Valve
 Type of Pattern : Straight Type
 Body Material cum standard : Bronze IBR Clause 282 (a) IV GrB
 Product Description : Bolted Bonnet Outside screw & Yoke type rising stem
 Type of Seat : Renewable Seat
 Type of Disc : Renewable Disc
 Trim : SS AISI-410
 Gland Packing : Expanded Pure Flexible Graphite
 End Details : Flanged as per BS 10 Table-F F.F. undrilled
 Test Pressure : Tested to 300Psig. Hyd. (21.09 kg/cm² (Hyd.))
 Working Pressure : Max. BOP 150Psig.(10.55kg/cm²) at 435°F(225°C)

1/2	15	16941
3/4	20	20956
1	25	27151
1¼	32	43213
1½	40	58412
2	50	84689
2½	65	90885
3	80	140068
4	100	195434

IBR 2C

HSN CODE : 84818030



Product : Sant Bronze Horizontal Lift Check Valve
 Type of Pattern : Straight Type
 Body Material cum standard : Bronze IBR Clause 282 (a) IV GrB
 Product Description : Screwed in Cover
 Type of Seat : Renewable Seat
 Type of Disc : Renewable Disc
 Trim : SS AISI-410
 End Details : Screwed female BSP Taper Threads to BS 21
 Test Pressure : Tested to 500Psig. Hyd. (35.15 kg/cm² (Hyd.))
 Working Pressure : Max. BOP 250Psig.(17.58kg/cm²) at 435°F(225°C)

1/2	15	4612
3/4	20	5761
1	25	8201
1¼	32	12700
1½	40	17362
2	50	25286

IBR 3A

HSN CODE : 84813000



Product : Sant Bronze Horizontal Lift Check Valve
 Type of Pattern : Straight Type
 Body Material cum standard : Bronze IBR Clause 282 (a) IV GrB
 Product Description : Bolted Cover
 Type of Seat : Renewable Seat
 Type of Disc : Renewable Disc
 Trim : AISI-410 Stainless Steel
 End Details : Screwed female BSP Taper Threads to BS 21
 Test Pressure : Tested to 500Psig. Hyd. (35.15 kg/cm² (Hyd.))
 Working Pressure : Max. BOP 250Psig.(17.58kg/cm²) at 435°F(225°C)

1½	40	36498
2	50	41097
2½	65	74486
3	80	102063

IBR 3B

HSN CODE : 84813000



Product : Sant Bronze Horizontal Lift Check Valve
 Type of Pattern : Straight Type
 Body Material cum standard : Bronze IBR Clause 282 (a) IV GrB
 Product Description : Screwed Cover
 Type of Seat : Renewable Seat
 Type of Disc : Renewable Disc
 Trim : AISI-410 Stainless Steel
 End Details : Flanges as per BS-10 Table-H F.F. undrilled
 Test Pressure : Tested to 500Psig. Hyd. (35.15 kg/cm²)
 Working Pressure : Max. BOP 250Psig.(17.58kg/cm²) at 435°F(225°C)

Size/Inch	mm	Price / Pc.
1/2	15	10348
3/4	20	10859
1	25	15249
1¼	32	21709
1½	40	26259
2	50	42209

IBR 3C

HSN CODE : 84813000



Product : Sant Bronze Horizontal Lift Check Valve
 Type of Pattern : Straight Type
 Body Material cum standard : Bronze IBR Clause 282 (a) IV GrB
 Product Description : Bolted Cover
 Type of Seat : Renewable Seat
 Type of Disc : Renewable Disc
 Trim : AISI-410 Stainless Steel
 End Details : Flanges as per BS-10 Table-H F.F. undrilled
 Test Pressure : Tested to 500Psig. Hyd. (35.15 kg/cm²) (Hyd.)
 Working Pressure : Max. BOP 250Psig.(17.58kg/cm²) at 435°F(225°C)

2½	65	98588
3	80	116621
4	100	158526

IBR 3D

HSN CODE : 84813000



Product : Sant Bronze Horizontal Lift Check Valve
 Type of Pattern : Straight Type
 Body Material cum standard : Bronze IBR Clause 282 (a) IV GrB
 Product Description : Bolted Cover
 Type of Seat : Renewable Seat
 Type of Disc : Renewable Disc
 Trim : AISI-410 Stainless Steel
 End Details : Flanges as per BS-10 Table-F F.F. undrilled
 Test Pressure : Tested to 300Psig. Hyd. (21.09 kg/cm²) (Hyd.)
 Working Pressure : Max. BOP 150Psig.(10.54kg/cm²) at 435°F(225°C)

2½	65	93378
3	80	110748
4	100	149849

IBR 3E

HSN CODE : 84813000



Product : Sant Bronze Horizontal Lift Check Valve
 Type of Pattern : Straight Type
 Body Material cum standard : Bronze IBR Clause 282 (a) IV GrB
 Product Description : Screwed in Cover
 Type of Seat : Renewable Seat
 Type of Disc : Renewable Disc
 Trim : AISI-410 Stainless Steel
 End Details : Flanges as per BS-10 Table-F F.F. undrilled
 Test Pressure : Tested to 300Psig. Hyd. (21.09 kg/cm²) (Hyd.)
 Working Pressure : Max. BOP 150Psig.(10.54kg/cm²) at 435°F(225°C)

1/2	15	8686
3/4	20	10322
1	25	14783
1¼	32	21176
1½	40	24543
2	50	39680

IBR 3F

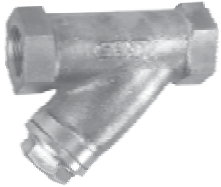
HSN CODE : 84813000

Product : Sant Bronze Sleeve packed Water Level Gauge
(Spare Drain)

Size/Inch	mm	Price / Pc.
1/2	15	4612
3/4	20	7002

IBR 11C

HSN CODE : 84818030



Product : Sant Bronze Y Type Strainer
 Type of Pattern : Y Type
 Body Material cum standard : Bronze IBR Clause 282 (a) IV GrB
 Product Description : Y Type Screwed in cover
 SS304 Screen having 0.5mm Dia perforations
 End Details : Screwed Female BSP Taper Thread to BS-21
 Test Pressure : Tested to 500Psig. Hyd. (35.15 kg/cm² Hyd.)
 Working Pressure : Max. BOP 250Psig.(17.58 kg/cm²) at 435°F(225°C)

1/2	15	2177
3/4	20	3588
1	25	7780
1¼	32	9343
1½	40	13463
2	50	25189

IBR 12A

HSN CODE : 84818030



Product : Sant Bronze Y Type Strainer
 Type of Pattern : Y Type
 Body Material cum standard : Bronze IBR Clause 282 (a) IV GrB
 Product Description : Y Type Screwed in cover
 SS304 Screen having 0.5mm Dia perforations
 End Details : Flanges as per BS-10 Table H, FF undrilled
 Test Pressure : Tested to 500Psig. Hyd. (35.15 kg/cm² Hyd.)
 Working Pressure : Max. BOP 250Psig.(17.58 kg/cm²) at 435°F(225°C)

1/2	15	9336
3/4	20	11179
1	25	16834
1¼	32	22480
1½	40	34633
2	50	51897

IBR 12B

HSN CODE : 84818030



Product : Sant Bronze Fusible Plug
 Type of Pattern : Two piece design
 Body Material cum standard : Bronze IBR Clause 282 (a) IV GrB
 Product Description : Two piece design
 End Details : Screwed male BSP Taper thread to BS-21
 Test Pressure : Tested to 500Psig. Hyd. (35.15 kg/cm² Hyd.)
 Working Pressure : Max. BOP 250Psig.(17.58kg/cm²) at 435°F(225°C)
 *Note : Melting temperature of Fusible Alloy 270°C

1/2	15	3588
3/4	20	3629
1	25	4165
1¼	32	5262
1½	40	6079
2	50	8911

IBR 13

HSN CODE : 84814000

(a)

SPARE CONES FOR THE FUSIBLE PLUG

1/2	15	1958
3/4	20	1958
1	25	2387
1¼	32	3260
1½	40	3260
2	50	4582

IBR 13A

HSN CODE : 84814000

IBR APPROVED

(WITH TEST CERTIFICATE IN FORM III-C)

NON IBR



Product : Sant Bronze Relief Valve (WITH WORK TEST CERTIFICATE)
 Type of Pattern : Straight Type
 Body Material cum standard : Bronze IS 318 LTB2
 Product Description : Spring Loaded open discharge
 Type of Seat : Integral
 Type of Disc : Renewable Disc
 Trim : Cu-Alloy
 End Details : Screwed male BSP Taper threads to BS-21
 Test Pressure : Shell test pressure to 300Psig. Hyd. (21.09 kg/cm² (Hyd.))
 Working Pressure : Set pressure 10.54 kg/cm²g. (Suitable for Water & Air)
 *Note : Please advise set pressure while placing order

IBR 21

HSN CODE : 84814000

Size/Inch	mm	Price / Pc.
1/4	8	3866
3/8	10	3866
1/2	15	3964
3/4	20	5328
1	25	7494
1¼	32	11077
1½	40	12556
2	50	20595



Product : Sant Bronze Relief Valve (WITH WORK TEST CERTIFICATE)
 Type of Pattern : Right Angle
 Body Material cum standard : Bronze IS 318 LTB2
 Product Description : Spring Loaded enclosed discharge
 Type of Seat : Integral
 Type of Disc : Renewable Disc
 Trim : Cu-Alloy
 End Details : Inlet end male BSP Parallel threads outlet female BSP Parallel thread to BS-21
 Test Pressure : Shell test pressure to 300Psig. Hyd. (21.09 kg/cm² (Hyd.))
 Working Pressure : Set pressure 10.54 kg/cm²g. (Suitable for Water & Air)
 *Note : Please advise set pressure while placing order

IBR 22

HSN CODE : 84814000

Size/Inch	mm	Price / Pc.
1/4	8	4243
3/8	10	4243
1/2	15	4339
3/4	20	5871
1	25	7936
1¼	32	11319
1½	40	15667
2	50	24746



Product : Sant Bronze Pilot Operated R Type Reducing Valve
 Body Material cum standard : Bronze IBR Clause 282 (a) IV GrB
 Product Description : Pilot operated R-type outlet pressure range available 5/60, 20/80, 40/125 Psig.
 Type of Seat : Renewable Seat
 Type of Disc : Renewable Disc
 Trim : SS AISI 410/Monel
 End Details : Flanges as per BS: 10 Table-H FF undrilled
 Test Pressure : Shell Test Pressure 500Psig. Hyd. (35.15 kg/cm² (Hyd.))
 Working Pressure : Max. BOP 250Psig.(17.58kg/cm²) steam Max Temp.(225°C)
 *Note : Please advise outlet pressure while placing order.

IBR 23

HSN CODE : 84811000

Size/Inch	mm	Price / Pc.
1	25	86649
1¼	32	110103
1½	40	116950
2	50	162220



Product : Sant Bronze Safety Valve
 Type of Pattern : Right Angle
 Body Material cum standard : Bronze IBR Clause 282 (a) IV GrB
 Product Description : Spring Loaded Enclosed Discharge
 Type of Seat : Integral
 Type of Disc : Renewable Disc
 Trim : Cu-Alloy
 End Details : Inlet end male BSP Taper thread outlet female BSP threads to BS-21
 Test Pressure : Shell test pressure 300Psig. Hyd. (21.09 kg/cm² (Hyd.))
 Working Pressure : Max. BOP 150Psig. at 435°F(225°C) Steam
 *Note : Please advise set pressure while placing Order.

IBR 24

HSN CODE : 84814000

Size/Inch	mm	Price / Pc.
1/2	15	8430
3/4	20	12079
1	25	16882
1½	40	26899
2	50	40134



Product : Sant Bronze Safety Valve
 Type of Pattern : Straight Type
 Body Material cum standard : Bronze IBR Clause 282 (a) IV GrB
 Product Description : Spring Loaded Open Discharge
 Type of Seat : Integral
 Type of Disc : Renewable
 Trim : Cu-Alloy
 End Details : Inlet threads BSPT Taper
 Test Pressure : Shell test pressure 300Psig. Hyd. (21.09 kg/cm² (Hyd.)
 Working Pressure : Max. BOP 150Psig. at 435°F(225°C) Steam
 *Note : Please advise set pressure while placing Order.

Size/Inch	mm	Price / Pc.
1/2	15	8026
3/4	20	11503
1	25	16081
1½	40	25617
2	50	38217

IBR 25

HSN CODE : 84814000



Product : Sant Bronze Mobrey Valve
 Type of Pattern : Right Angle
 Body Material cum standard : Bronze (IBR Clause 282(a) IV Gr. B
 Product Description : Screwed in bonnet inside screw rising stem
 Type of Seat : Renewable Seat
 Type of Disc : Renewable Disc
 Trim : AISI-410 Stainless Steel
 Gland Packing : Expanded Pure Flexible Graphite
 End Details : Flanges as per BS-10 Table H (F.F. undrilled)
 Test Pressure : Tested to 500Psig. Hyd. (35.15 kg/cm² Hyd.)
 Working Pressure : Max. BOP 250Psig.(17.58kg/cm²) at 435°F(225°C)

1	25	41801

IBR 26

HSN CODE : 84818030



Product : Sant Bronze Loco Type Fusible Plug
 Body Material cum standard : Bronze IBR Clause 282 (a) IV GrB
 Product Description : Loco Type two piece design
 End Details : Male BSP Taper Threads to BS-21
 Test Pressure : Tested to 500Psig. Hyd. (35.15 kg/cm² (Hyd.)
 Working Pressure : Max. BOP 250Psig.(17.58kg/cm²)
 Steam at 435°F(225°C)

1	25	6413
1¼	32	6844

IBR 27

HSN CODE : 84814000



CI 1A

Product : Sant C.I. Globe Valve
 Product Standard : BS:EN-13789 / DIN 86251 / BS: 5152
 Type of Pattern : Straight Pattern
 Pressure/Class /Rating : PN-16
 Body Material cum standard : Cast Iron IBR 86 to 93 Grade A
 Product Description : Bolted Bonnet, outside screw & yoke type Rising Stem
 Type of Seat : Renewable
 Type of Disc : Renewable Disc
 Trim : SS-410
 Gland Packing : Expanded Pure Flexible Graphite
 End Details : Flanges as per DIN 2533 RF (PN 16) Undrilled
 Test Pressure : Body 26kg/cm²g Seat 16kg/cm²g Hyd.
 Working Pressure : Max BOP 13kg/cm²g at 220°C Steam

HSN CODE : 84818030

Size/Inch	mm	Price / Pc.
1/2	15	3374
3/4	20	3677
1	25	4101
1¼	32	5965
1½	40	7495
2	50	9518
2½	65	13973
3	80	17929
4	100	24527
5	125	36032
6	150	48450
8	200	77733



CI 2A

Product : Sant C.I. Junction Steam Stop Valve
 Product Standard : BS:EN-13789/ DIN 86251 / BS: 5152
 Type of Pattern : Right Angle
 Pressure/Class /Rating : PN-16
 Body Material cum standard : Cast Iron IBR 86 to 93 Grade A
 Product Description : Bolted Bonnet, outside screw & yoke type Rising Stem
 Type of Seat : Renewable
 Type of Disc : Renewable Disc
 Trim : SS-410
 Gland Packing : Expanded Pure Flexible Graphite
 End Details : Flanges as per DIN 2533 RF (PN 16) Undrilled
 Test Pressure : Body 26kg/cm²g Seat 16kg/cm²g Hyd.
 Working Pressure : Max BOP 13kg/cm²g at 220°C Steam

HSN CODE : 84818030

1/2	15	3374
3/4	20	3677
1	25	4101
1¼	32	5424
1½	40	7495
2	50	9518
2½	65	13973
3	80	17929
4	100	24527
5	125	36032
6	150	48450
8	200	77733



CI 3A

Product : Sant C.I. Horizontal Check Valve
 Product Standard : BS:EN-12334 / BS: 5153
 Type of Pattern : Straight Type
 Pressure/Class /Rating : PN-16
 Body Material cum standard : Cast Iron IBR 86 to 93 Grade A
 Product Description : Bolted Cover
 Type of Seat : Renewable
 Type of Disc : Renewable Disc
 Trim : SS-410
 End Details : Flanges as per DIN 2533 RF (PN 16) Undrilled
 Test Pressure : Body 26kg/cm²g Seat 16kg/cm²g Hyd.
 Working Pressure : Max BOP 13kg/cm²g at 220°C Steam

HSN CODE : 84813000

1/2	15	2767
3/4	20	3090
1	25	3601
1¼	32	5214
1½	40	6603
2	50	8686
2½	65	11872
3	80	16122
4	100	21121
5	125	31119
6	150	42997
8	200	67791



CI 3C

Product : Sant C.I. Swing Check Valve
 Product Standard : BS:EN-12334 / BS: 5153
 Type of Pattern : Straight Type
 Pressure/Class /Rating : Class 125
 Body Material cum standard : Cast Iron IBR 86 to 93 Grade A
 Product Description : Bolted Cover
 Type of Seat : Renewable
 Type of Disc : Renewable Disc
 Trim : SS-410
 End Details : Flanges as per BS 10 Table F Undrilled
 Body & Seat Test Pressure : Body 300Psig Seat 200Psig. Hyd.
 Working Pressure : Max BOP 150Psig (10.54 kg/cm²)

HSN CODE : 84813000

1½	40	6672
2	50	10071
2½	65	13335
3	80	16255
4	100	22580
5	125	29875
6	150	31536
8	200	64456



Product : Sant C.I. Accessible Feed Check Valve
 Type of Pattern : Right Angle
 Body Material cum standard : Cast Iron IBR 86 to 93 Grade A
 Product Description : Curved Inlet with Inspection Branch
 Type of Seat : Renewable
 Type of Disc : Renewable Disc
 Trim : AISI-410 Stainless
 Gland Packing : Expanded Pure Flexible Graphite
 End Details : Flanges as per BS-10 Table F.F. undrilled
 Test Pressure : Body (21.09kg/cm²) 300 Psig. Hyd.
 Working Pressure : Max BOP (10.54kg/cm²) 150 Psig. at 220°C Steam

Size/Inch	mm	Price / Pc.
1¼	32	21820
1½	40	28412
2	50	40157
2½	65	49455

CI 5D

HSN CODE : 84813000



Product : Sant C.I. Stop Cum Non Return Valve
 Product Standard : BS:EN-13789 / BS 5152
 Type of Pattern : Straight Type / Right Angle
 Body Material cum standard : Cast Iron IBR 86 to 93 Grade A
 Product Description : Bolted Bonnet O/S Yoke Type Rising Stem
 Type of Seat : Renewable
 Type of Disc : Renewable Disc
 Trim : AISI-410 Stainless Steel
 Gland Packing : Expanded Pure Flexible Graphite
 End Details : Flanges as per DIN 2533 RF (PN16) undrilled
 Working Pressure : Max BOP 13kgf/cm²g at 220°C Steam

1½	40	9591
2	50	12433
2½	65	17087
3	80	23340
4	100	33415
5	125	44668
6	150	59873
8	200	91358

CI 6A

HSN CODE : 84813000



Product : Sant C.I. Y Type Strainer
 Type of Pattern : Y-Type
 Body Material cum standard : Cast Iron IBR 86 to 93 Grade A
 Product Description : Bolted Cover
 Trim : SS 304 Screen having 1.2 mm dia perforation
 End Details : Flanges as per BS-10 Table F.F. undrilled
 Test Pressure : 21.09kg/cm² (300 Psig. Hyd.)
 Working Pressure : Max BOP 10.54kgf/cm²g. (150 Psig.) at 220°C Steam

1	25	3545
1½	40	5942
2	50	8653
2½	65	13499
3	80	14861
4	100	24717
5	125	39373
6	150	45245
8	200	80369

CI 7A

HSN CODE : 84818030

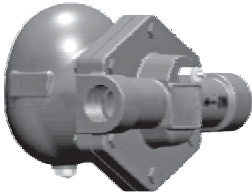


Product : Sant C.I. Y Type Strainer
 Type of Pattern : Y-Type
 Body Material cum standard : Cast Iron IBR 86 to 93 Grade A
 Product Description : Bolted Cover
 Trim : SS 304 Screen having 1.2 mm dia perforation
 End Details : Female BSP Parallel threads to BS-21
 Test Pressure : Body 26kg/cm²g. (370 Psig.) Hyd.
 Working Pressure : Max BOP 13kgf/cm²g. (185 Psig.) at 220°C Steam

1/2	15	667
3/4	20	941
1	25	1461
1¼	32	2016
1½	40	2573
2	50	4378

CI 7B

HSN CODE : 84818030



Product : SANT C.I. Ball Float Steam Trap
 Type of Pattern : Vertical
 Body Material cum standard : Cast Iron IBR 86 to 93 Grade A
 Gasket : CAF
 Product Description : Bolted Cover
 Trim : SS 304
 End Details : Inlet Female BSP Parallel Threads to BS-21
 Body Test Pressure : 21.09kg/cm² (300Psig.) Hyd.
 Working Pressure : Max BOP 150Psig. (10.54kgf/cm²g) at 220°C Steam

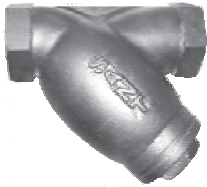
Size/Inch	mm	Price / Pc.
1/2	15	7992
3/4	20	8070
1	25	11306
1½	40	27653
2	50	36501

CI 12A

HSN CODE : 84818030

CAST IRON VALVES

(WITH OUR WORK'S CERTIFICATE)



Product : Sant C.I. Y Type Strainer
 Type of Pattern : Y Type
 Body Material cum standard : Cast Iron IS 210 Gr FG 200
 Product Description : Screwed in cover
 Trim : SS 304 Screen having 1.2mm perforation
 End Details : Screwed female BSP Parallel threads to BS-21
 Test Pressure : 24kg/cm²g Hyd.
 Working Pressure : 16kg/cm²g Hyd.
 (For Water Lines)

Size/Inch	mm	Price / Pc.
1/2	15	417
3/4	20	622
1	25	1024
1¼	32	1271
1½	40	1944
2	50	3534

CI 16

HSN CODE : 84818030



Product : Sant C.I. Y Type Strainer
 Type of Pattern : Y Type
 Body Material cum standard : Cast Iron IS 210 Gr. FG 200
 Product Description : Screwed / Bolted Cover
 Trim : S.S. Screen/SS 304 having 1.2mm perforation
 End Details : Flanges as per BS 10 Table F undrilled
 Body Test Pressure : 24kg/cm²g Hyd.
 Working Pressure : 16kg/cm²g Hyd.
 (For Water Lines)

1	25	2174
1¼	32	2538
1½	40	3607
2	50	4926
2½	65	7014
3	80	9105
4	100	13615
5	125	21561
6	150	27729
8	200	51998
10	250	73504
12	300	112353

CI 16 B

(With Magnet 15% Extra Rates)

HSN CODE : 84818030



Product : Sant C.I. Y Type stainer (Flanged)
 Pressure/class/rating : PN-10
 Body Material cum standard : Cast Iron IS 210 Gr. FG 200
 Product Description : Bolted cover
 Trim : SS Screen/ SS 304 having 1.2 mm perforation
 End Details : Flanges as per BS 10 Table E (Drilled)
 Body Test Pressure : 21barg (300Psig.) Hyd.

1	25	1955
1¼	32	2279
1½	40	3244
2	50	4392
2½	65	5935
3	80	7934
4	100	11395
5	125	18779
6	150	21848
8	200	42051
10	250	66310
12	300	89425

CI 16 C

HSN CODE : 84818030



Product : Sant M.S. Fabricated Y-Strainer (Flanged)
 Type : 'Y' Type
 Pressure/class/rating : PN-16
 Body Material cum standard : ASTM A106 Gr. B
 Product Description : Bolted Bonnet
 Screen : 40 Mesh SS 304
 End Details : Flanges Ends as per ASME B 16.5 CL-150 R.F.
 Body Test Pressure : 24kg/cm²g Hyd.
 Working Pressure : 16kg/cm²g Hyd.

CI 16 D

HSN CODE : 84818030

Size/Inch	mm	Price / Pc.
12	300	114353
14	350	127911
16	400	161603
18	450	215888
20	500	285606
24	600	352534



Product : Sant C.I. Ball Valve
 Product Standard : IS-9890 -1981 Class-125
 Type of Pattern : Straight
 Body Material cum standard : Cast Iron IS 210 Gr. FG 220
 Product Description : Two piece design
 Type of Seat : Renewable Teflon
 Trim : AISI 410 Stem, Stainless Steel AISI 304 Ball
 Gland Packing : Teflon Rings
 End Details : Screwed Female Parallel Threads as per IS:554
 Body Test Pressure : 21barg 300Psig. Hyd.
 Seat Test Pressure : 220Psig.(15.4barg) Hyd. & 100Psig. (6.9 bar) AIR
 ISI Marked

CI 17

HSN CODE : 84818030

1/2	15	598
3/4	20	896
1	25	1059
1¼	32	1754
1½	40	2286
2	50	3268
2½	65	6287
3	80	9228
4	100	21960

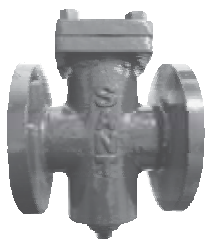


Product : Sant C.I. Ball Valve
 Product Standard : IS-9890 -1981 Class-125
 Body Material cum standard : Cast Iron IS 210 Gr. FG 220
 Product Description : Three piece design
 Type of Seat : Renewable Teflon Seat
 Trim : AISI 410 Stem Stainless Steel AISI 304 Ball
 Gland Packing : Teflon Rings
 End Details : Flanges as per IS:3516-1966 Undrilled
 Body Test Pressure : 21barg 300Psig. Hyd.
 Seat Test Pressure : 220Psig.(15.4barg) Hyd. & 100Psig. (6.9 bar) AIR
 ISI Marked

CI 18

HSN CODE : 84818030

1	25	2286
1¼	32	3177
1½	40	4068
2	50	6296
2½	65	9483
3	80	13562
4	100	26016



Product : Sant C.I. 'T' Strainer Flanged
 Type of Pattern : Tee Type
 Body Material cum standard : Cast Iron IS 210 Gr FG 200
 Product Description : Bolted Bonnet
 Trim : SS 304 Screen 1.2 perforation
 End Details : Flanged as per Class-150
 Body Test Pressure : 24kg/cm²g Hyd.
 Working Pressure : 16kg/cm²g Hyd.
 (For Water Lines)

CI 19

HSN CODE : 84818030

2	50	5172
2½	65	7013
3	80	9105
4	100	13613
6	150	26251
8	200	45258



Product : Sant M.S. Fabricated T-Strainer (Flanged)
 Type : Tee Type
 Pressure/class/rating : PN-16
 Body Material cum standard : ASTM A106 Gr. B
 Product Description : Bolted Bonnet
 Screen : 40 Mesh SS 304
 End Details : Flanges Ends as per ASME B 16.5 CL-150 R.F.
 Body Test Pressure : 24kg/cm²g Hyd.
 Working Pressure : 16kg/cm²g Hyd.

Size/Inch	mm	Price / Pc.
8	200	47266
10	250	80809
12	300	115134
14	350	136071
16	400	164128
18	450	224132
20	500	297423
22	550	314858
24	600	383236

CI 19D

HSN CODE : 84818090



Product : Sant C.I. Ball Foot Valve
 Type of Pattern : Y Type Pattern
 Pressure/Class /Rating : PN16
 Body Material cum standard : Cast Iron to IS:210 FG 200
 Type of Ball : MS Rubber Coated
 Seat Ring : Nitrile Rubber
 Strainer : Cast Iron to IS:210 FG 260
 End Details : Flanges as per IS:1538
 Body Test Pressure : 2.4MPa (Hyd.)
 Seat Test Pressure : 1.6MPa (Hyd.)

2	50	3765
2½	65	4978
3	80	6458
4	100	10252
6	150	21529
8	200	51667

BFV
(A)

HSN CODE : 84818090



Product : Sant CI Balancing Valve (Flanged)
 Pressure/class/rating : PN-16
 Body Material cum standard : Cast Iron IS: 200 Gr. FG 200
 Trim : DI+EPDM
 Stem : AISI 410
 End Details : Flanged as per (PN 16/BS:EN-1092)
 Seat Test Pressure : 1.6 MPa Hyd (232Psig). Hyd.
 Body Test Pressure : 2.4 MPa Hyd (348 Psig). Hyd.
 Maximum Operating Temp. : 120°C

2½	65	17065
3	80	20052
4	100	29929
5	125	42514
6	150	57641
8	200	98915
10	250	159347
12	300	189860
14	350	406441

SCBV
(A)

HSN CODE : 84818090



Product : Sant DI Balancing Valve (Flanged)
 Pressure/class/rating : PN-16
 Product Standard : BS 5152
 Body Material cum standard : D.I. SG Iron Gr. 450/12
 Trim : MS+EPDM
 Stem : AISI 410
 End Details : Flanged as per ISO: 7005-2/EN 1092-2
 Seat Test Pressure : 18 bar Hyd.
 Body Test Pressure : 16 bar Hyd.
 Maximum Operating Temp. : 110°C

16	400	447600
18	450	558096
20	500	698078
24	600	935842

SCBV-A
(A)

HSN CODE : 84818090

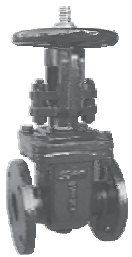


Product : Sant C.I. Wedge Gate Sluice Valve
 Product Standard : IS-14846 duly ISI Marked
 Pressure/Class /Rating : PN 1.0 PD Type
 Body Material cum standard : IS-210 Gr. FG-200 Cast Iron
 Product Description : Bolted Bonnet inside screw non-rising stem
 Type of Seat : Renewable
 Type of Wedge : Solid Wedge
 Trim : Cu-Alloy Rings, stem SS (12 Cr. 12)
 Gland Packing : Expanded Pure Flexible Graphite
 End Details : Flanges as per IS 1538 F/F Drilled
 Body Test Pressure : 1.5 MPa Hyd.
 Seat Test Pressure : 1.0 MPa Hyd.

Size/Inch	mm	Price / Pc.
2	50	10425
2½	65	14038
3	80	15969
4	100	24190
5	125	28013
6	150	31541
8	200	50416
10	250	81908
12	300	95936

CR 32

HSN CODE : 84818030

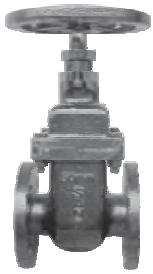


Product : Sant C.I. Wedge Gate Sluice Valve
 Pressure/Class /Rating : PN 1.0 PD Type
 Body Material cum standard : IS-210 Gr. FG-200 Cast Iron
 Product Description : Bolted Bonnet outside screw & Yoke type rising stem
 Type of Seat : Renewable
 Type of Wedge : Solid Wedge
 Trim : Cu-Alloy, Stem SS AISI-410
 Gland Packing : Rubber 'O' Ring
 End Details : Flanges as per IS 1538 F/F Drilled
 Body Test Pressure : 1.5 MPa (Hyd.)
 Seat Test Pressure : 1.0 MPa (Hyd.)

2	50	10632
2½	65	14320
3	80	16289
4	100	24676
5	125	28569
6	150	32175
8	200	51414
10	250	83538
12	300	97850

CR 32A

HSN CODE : 84818030



Product : Sant C.I. Wedge Gate Sluice Valve
 Product Standar : IS-14846 duly ISI Marked
 Pressure/Class /Rating : PN 1.6 PD Type
 Body Material cum standard : IS-210 Gr. FG-200 Cast Iron
 Product Description : Bolted Bonnet Inside screw non rising stem
 Type of Seat : Renewable
 Type of Wedge : Solid Wedge
 Trim : Cu-Alloy, Stem SS (12 Cr. 12)
 Gland Packing : Rubber 'O' Ring
 End Details : Flanges as per IS 1538 F/F Drilled
 Body Test Pressure : 2.4 MPa Hyd. (348 Psig)
 Seat Test Pressure : 1.6 MPa Hyd. (232 Psig)

2	50	10981
2½	65	14999
3	80	17801
4	100	25898
5	125	29757
6	150	33609
8	200	53432
10	250	86680
12	300	106252

CR 32B

HSN CODE : 84818030



Product : Sant C.I. Wedge Gate Sluice Valve
 Pressure/Class /Rating : PN 1.6 PD Type
 Body Material cum standard : IS 210 Gr. FG 200 Cast Iron
 Product Description : Bolted bonnet inside screw non rising stem
 Type of Seat : Renewable
 Type of Wedge : Renewable Solid Wedge
 Trim : Cu-Alloy Seats, Stem SS AISI 410
 Gland Packing : Expanded Pure Flexible Graphite
 End Details : Flanges as per IS-1538 FF Drilled
 Body Test Pressure : 2.4MPa Hyd. (348 Psig. Hyd.)
 Seat Test Pressure : 1.6MPa Hyd. (232 Psig. Hyd.)

2	50	10456
2½	65	14284
3	80	16148
4	100	24664
5	125	28338
6	150	32011
8	200	50886
10	250	82554
12	300	96389

CR 19A

HSN CODE : 84818030



Product : Sant C.I. Wedge Gate Sluice Valve
 Pressure/Class/Rating : PN 1.6 PD Type
 Body Material cum standard : Cast Iron IS-210 Gr. FG-200
 Product Description : Bolted bonnet outside screw & Yoke type rising stem
 Type of Seat : Renewable
 Type of Wedge : Solid Wedge
 Trim : Cu-Alloy Seats, Stem SS AISI 410
 Gland Packing : Expanded Pure Flexible Graphite
 End Details : Flanges Drilled as per IS-1538 FF Drilled
 Body Test Pressure : 2.4MPa Hyd. (348Psig.) Hyd.
 Seat Test Pressure : 1.6MPa Hyd. (232Psig.) Hyd.

Size/Inch	mm	Price / Pc.
2	50	10668
2½	65	14567
3	80	16470
4	100	25158
5	125	28909
6	150	32651
8	200	51908
10	250	84200
12	300	98317

CR 19B

HSN CODE : 84818030



Product : Sant C.I. Wedge Gate Sluice Valve
 Product Standard : Face to Face, flange dimensions as per IS-780
 Pressure/Class /Rating : PN 1.0
 Body Material cum standard : IS 210 Gr. FG 200 Cast Iron
 Product Description : Bolted bonnet inside screw non rising stem
 Type of Seat : Renewable
 Type of Wedge : Renewable Solid Wedge
 Trim : Cu-Alloy Seats, Stem SS AISI 410
 Gland Packing : Expanded Pure Flexible Graphite
 End Details : Flanges as per IS-780/IS-1538 FF Drilled
 Body Test Pressure : 1.5 MPa Hyd.
 Seat Test Pressure : 1.0 MPa Hyd.

2	50	7450
2½	65	8786
3	80	10787
4	100	14219
5	125	19234
6	150	25304
8	200	35966
10	250	81702
12	300	95699

CR 19

HSN CODE : 84818030



Product : Sant D.I. Resilient Seated Gate/Sluice Valve
 Pressure Rating : PN 16
 Product Description : DI Sluice Gate Valve
 Non-Rising Stem Resilient Soft Seated
 Type of Wedge : DI+EPDM
 Trim : AISI 420
 Gland Packing : O Ring NBR
 End Details : Flanges as per IS-1538 R/F Drilled
 Pressure Rating : PN-16
 Body Test Pressure : 2.4MPa Hyd.
 Seat Test Pressure : 1.6MPa Hyd.

2	50	10261
2½	65	14017
3	80	15846
4	100	24204
5	125	27811
6	150	31412
8	200	49693
10	250	89949
12	300	125789

RSV

HSN CODE : 84818030



Product : Sant DI Resilient Seated Gate/Sluice Valve
 Pressure Rating : PN-20
 Product description : DI Sluice Gate Valve, Rising Stem Resilient Soft Seated
 Type of Wedge : DI+EPDM
 Trim : SS 410
 Gland Packing : O Ring NBR
 End Details : Flanges as per IS-1538 drilled
 Body Test Pressure : 3.0MPa Hyd.
 Seat Test Pressure : 2.0MPa Hyd.

2	50	10989
2½	65	15004
3	80	16964
4	100	25913
5	125	29776
6	150	33631
8	200	53465
10	250	86726
12	300	101266

HSN CODE : 84818090

YZ41Y

(A)



CR 21A

Product : Sant C.I. Butterfly Valve
 Product Standard : IS:13095
 Type of Pattern : Short Pattern
 Pressure/Class /Rating : PN-16
 Body Material cum standard : IS-210 Gr. FG-260 Cast Iron
 Product Description : Wafer Type
 Type of Seat : Nitrile/EPDM Rubber Lining
 Type of Disc : SG Iron
 Stem : AISI-410 Stainless Steel
 End Details : Suitable insertion between Flanges as per BS-10 Table D/E
 ANSI B 16.1 CI-125

HSN CODE : 84818030

ISI MARKED

PN16
 Body Test Pressure : 2.4 MPa (348 Psig Hyd.)
 Seat Test Pressure : 1.8 MPa (262 Psig Hyd.)

Size/Inch	mm	Price / Pc.
1½	40	3010
2	50	3441
2½	65	3727
3	80	4007
4	100	5153
5	125	6619
6	150	7610



CR 21B

Product : Sant C.I. Butterfly Valve
 Product Standard : IS:13095
 Type of Pattern : Medium Pattern
 Pressure/Class /Rating : PN-16
 Body Material cum standard : IS-210 Gr. FG-260 Cast Iron
 Product Description : Wafer Type
 Type of Seat : Nitrile/EPDM Rubber Lining
 Type of Disc : SG Iron
 Stem : AISI-410 Stainless Steel
 End Details : Suitable insertion between Flanges as per BS-10 Table D/E
 ANSI B 16.1 CI-125

HSN CODE : 84818030

ISI MARKED

PN16
 Body Test Pressure : 2.4 MPa (348 Psig Hyd.)
 Seat Test Pressure : 1.8 MPa (262 Psig Hyd.)

8	200	15459
10	250	24679
12	300	29460
14	350	46615
16	400	60486
18	450	95934
20	500	144629
24	600	187091



CR 22A

Product : Sant C.I. Butterfly Valve
 Product Standard : IS:13095
 Type of Pattern : Short Pattern
 Pressure/Class /Rating : PN-16
 Body Material cum standard : IS-210 Gr. FG-260 Cast Iron
 Product Description : Wafer Type
 Type of Seat : Nitrile/EPDM Rubber Lining
 Type of Disc : CF 8 Stainless Steel
 Stem : AISI-410 Stainless Steel
 End Details : Suitable insertion between Flanges as per BS-10 Table D/E
 ANSI B 16.1 CI-125

HSN CODE : 84818030

ISI MARKED

PN16
 Body Test Pressure : 2.4 MPa (348 Psig Hyd.)
 Seat Test Pressure : 1.8 MPa (262 Psig Hyd.)

1½	40	3305
2	50	3797
2½	65	4086
3	80	4963
4	100	6314
5	125	8258
6	150	9341



CR 22B

Product : Sant C.I. Butterfly Valve
 Product Standard : IS:13095
 Type of Pattern : Medium Pattern
 Pressure/Class /Rating : PN-16
 Body Material cum standard : IS-210 Gr. FG-260 Cast Iron
 Product Description : Wafer Type
 Type of Seat : Nitrile/EPDM Rubber Lining
 Type of Disc : CF 8 Stainless Steel
 Stem : AISI-410 Stainless Steel
 End Details : Suitable insertion between Flanges as per BS-10 Table D/E
 ANSI B 16.1 CI-125

HSN CODE : 84818030

ISI MARKED

PN16
 Body Test Pressure : 2.4 MPa (348 Psig Hyd.)
 Seat Test Pressure : 1.8 MPa (262 Psig Hyd.)

8	200	19627
10	250	32217
12	300	40580
14	350	70240
16	400	86632
18	450	139604
20	500	175400
24	600	253810

*NOTE : BUTTERFLY VALVES FROM 40MM TO 150MM WILL BE LEVER OPERATED AND SIZE 200MM AND ABOVE WILL BE GEAR OPERATED

10 bar = 1MPa = 145 Psig. = 10.1972 Kg/cm²



Product : Sant C.I. Butterfly Valve (Lever Operated)
 Product Standard : IS:13095
 Type of Pattern : Short Pattern
 Pressure/Class /Rating : PN10
 Body Material cum standard : Cast Iron to IS:210 FG 260
 Product Description : Wafer Type
 Type of Seat : Nitrile/EPDM Rubber Lining
 Type of Disc : SG Iron
 Stem : AISI-410
 End Details : Suitable insertion between Flanges as per BS-10 Table D/E & B 16.1 CI-125
 Body Test Pressure : 1.5MPa Hyd.
 Seat Test Pressure : 1.10MPa Hyd.

ISI MARKED

HSN CODE : 84818030

CR 23

Size/Inch	mm	Price / Pc.
1½	40	2324
2	50	2607
2½	65	2860
3	80	3306
4	100	4114
5	125	5734
6	150	6493
8	200	11087
10	250	16338
12	300	20455



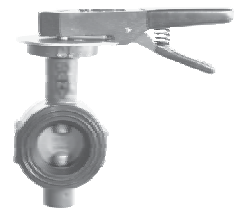
Product : Sant C.I. Butterfly Valve (Lever Operated)
 Product Standard : IS:13095
 Type of Pattern : Short Pattern
 Pressure/Class /Rating : PN10
 Body Material cum standard : Cast Iron to IS:210 FG 260
 Product Description : Wafer Type
 Type of Seat : Nitrile/EPDM Rubber Lining
 Type of Disc : SS Disc
 Stem : AISI-410
 End Details : Suitable insertion between Flanges as per BS-10 Table D/E & B 16.1 CI-125
 Body Test Pressure : 1.5MPa Hyd.
 Seat Test Pressure : 1.10MPa Hyd.

ISI MARKED

HSN CODE : 84818030

CR 24

1½	40	2552
2	50	2940
2½	65	3467
3	80	3897
4	100	5100
5	125	7357
6	150	8215
8	200	15698
10	250	24934
12	300	35292

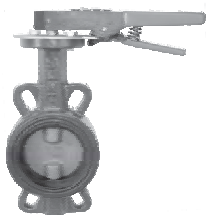


Product : Sant C.I. Butterfly Valve
 Type of Pattern : Wafer Type
 Pressure/Class /Rating : PN 20
 Body Material cum standard : CI IS:210 FG 260
 Product Description : Wafer Type
 Type of Seat : Nitrile/EPDM Lining
 Type of Disc : SS Seat CF8
 Stem : SS AISI-410
 End Details : Suitable insertion between Flanges as per BS-10 Table D/E or ASME B 16.1, Class-125
 Body Test Pressure : 3.0 MPa Hyd.
 Seat Test Pressure : 2.2 MPa Hyd.

HSN CODE : 84818030

CR 27A

1½	40	3536
2	50	4061
2½	65	4371
3	80	5310
4	100	6570
5	125	8836
6	150	9994
8	200	21000
10	250	34472
12	300	43421



Product : Sant Ductile Iron Butterfly Valve
 Type of Pattern : Wafer Type
 Pressure/Class /Rating : PN 25
 Body Material cum standard : SG Iron to IS:1865
 Product Description : Wafer Type
 Type of Seat : Nitrile/EPDM Lining
 Type of Disc : Up to 125mm with SS Seat CF8
 Above 125mm with DI + EPDM
 Stem : SS AISI-410
 End Details : Suitable insertion between Flanges as per BS-10 Table D/E or ASME B 16.1, Class-125
 Body Test Pressure : 3.8 MPa Hyd.
 Seat Test Pressure : 2.7 MPa Hyd.

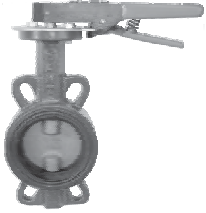
HSN CODE : 84818030

CR 28D

2	50	5222
2½	65	5975
3	80	7112
4	100	9173
5	125	12041
6	150	15723
8	200	30577
10	250	44152
12	300	62445

*NOTE : BUTTERFLY VALVES FROM 40MM TO 150MM WILL BE LEVER OPERATED AND SIZE 200MM AND ABOVE WILL BE GEAR OPERATED

10 bar = 1MPa = 145 Psig. = 10.1972 Kg/cm²



Product : Sant C.I. Butterfly Valve
 Product Standard : IS:13095
 Product Standard : Face to face BS:EN-593 / BS : 5155
 Type of Pattern : Short Pattern, Lever Operated
 Pressure/Class /Rating : PN 1.6
 Body Material cum standard : IS-210 Gr. FG 260 Cast Iron
 Product Description : Wafer Type **ISI MARKED**
 Type of Seat : EPDM Rubber Lining
 Type of Disc : CF-8M Stainless Steel
 Stem : AISI-304 Stainless Steel
 End Details : Suitable insertion between Flanges as per BS-10 Table D/E CI-125
 Body Test Pressure : 2.4 MPa Hyd. (348 Psig.)
 Seat Test Pressure : 1.6 MPa Hyd. (232 Psig.) **HSN CODE : 84818030**

CR 28C

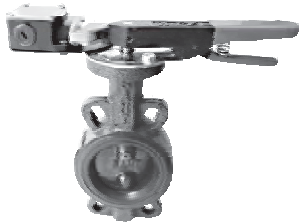
Size/Inch	mm	Price / Pc.
1½	40	3974
2	50	4548
2½	65	4907
3	80	5377
4	100	6894
5	125	8589
6	150	9698
8	200	22019
10	250	38533
12	300	48531
14	350	84012
16	400	115866
18	450	151808
20	500	209796
24	600	283746



Product : Sant C.I. Butterfly Valve with Pneumatic Actuator
 Type of Pattern : Water Type
 Pressure/Class/Rating : PN 1.6
 Body Material Cum Standard : CI to IS:210 Gr FG 260
 Product Description : Wafer Type
 Type of Seat : Nitrile/EPDM Lining
 Type of Disc : Stainless Steel CF8
 Stem : AISI-410
 End Details : Suitable insertion between flanges as per BS 10 Table F/D/E or ASME B 16.1 Class-125
PN1.6
 Body Test Pressure : 2.4 MPa (348 Psig Hyd.)
 Seat Test Pressure : 1.8 MPa (200 Psig Hyd.) **HSN CODE : 84818030**

CIBFP (A)

1½	40	11956
2	50	12515
2½	65	14826
3	80	15193
4	100	16697
5	125	27009
6	150	28244
8	200	47724
10	250	87540
12	300	96548



Product : Sant C.I. Butterfly Valve with Limit Switch
 Type of Pattern : Water Type (Lever Operated)
 Pressure/Class/Rating : PN 1.6
 Body Material Cum Standard : CI to IS:210 Gr FG 260
 Product Description : Wafer Type
 Type of Seat : Nitrile/EPDM Lining
 Type of Disc : SS Seat CF8
 Stem : AISI-410
 End Details : Suitable insertion between flanges as per BS 10 Table F/D/E or ASME B 16.1 Class-125
PN1.6
 Body Test Pressure : 2.4 MPa (348 Psig Hyd.)
 Seat Test Pressure : 1.8 MPa (200 Psig Hyd.) **HSN CODE : 84818030**

CIBFL (A)

1½	40	6371
2	50	6871
2½	65	7207
3	80	7534
4	100	8573
5	125	10225
6	150	11342
8	200	20928

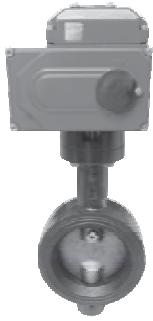


Product : Sant C.I. Butterfly Valve with Limit Switch
 Type of Pattern : Water Type (Gear Operated)
 Pressure/Class/Rating : PN 1.6
 Body Material Cum Standard : CI to IS:210 Gr FG 260
 Product Description : Wafer Type
 Type of Seat : Nitrile / EPDM Lining
 Type of Disc : SS Seat CF8
 Stem : AISI-410
 End Details : Suitable insertion between flanges as per BS 10 Table F/D/E or ASME B 16.1 Class-125
 Body Test Pressure : 2.4 MPa
 Seat Test Pressure : 1.8 MPa **HSN CODE : 84818030**

CIBFL (G)

6	150	17804
8	200	24285
10	250	37240
12	300	45842

*NOTE : BUTTERFLY VALVES FROM 40MM TO 150MM WILL BE LEVER OPERATED AND SIZE 200MM AND ABOVE WILL BE GEAR OPERATED
 10 bar = 1MPa = 145 Psig. = 10.1972 Kg/cm²



Product : Sant C.I. Butterfly Valve with Electric Actuator
 Type of Pattern : Water Type
 Pressure/Class/Rating : PN 1.6
 Body Material Cum Standard : CI to IS:210 Gr FG 260
 Type of Lining : EPDM
 Type of Disc : SS CF 8
 Stem : AISI-410
 End Details : Suitable insertion between flanges
 as ASME B 16.1 or Class-125

PN1.6

Body Test Pressure : 2.4 MPa (348 Psig Hyd.)

Seat Test Pressure : 1.8 MPa (200 Psig Hyd.)

Size/Inch	mm	Price / Pc.
1½	40	33742
2	50	34281
2½	65	34603
3	80	35529
4	100	37052
5	125	84249
6	150	85550
8	200	105462
10	250	140489
12	300	160558
14	350	216004
16	400	246629
18	450	346973
20	500	675361
24	600	793341

CIBFE
(A)

HSN CODE : 84818030



Product : Sant C.I. Butterfly Valve Wafer Type (Lever Operated)
 Type of Pattern : Replaceable Seat & Disc
 Pressure/Class /Rating : PN16
 Body Material cum standard : Cast Iron to IS:210 FG 260
 Type of Seat : EPDM Lining
 Type of Disc : SG Iron
 Stem : AISI-410
 End Details : Suitable between Flanges ASME B 16.1 CI-125
 Body Test Pressure : 2.4MPa Hyd.
 Seat Test Pressure : 1.8MPa Hyd.

BFX
(A)

HSN CODE : 84818030

2	50	3441
2½	65	3727
3	80	4007
4	100	5153
5	125	6619
6	150	7610
8	200	13207



Product : Sant CI. Butterfly Valve Wafer Type (Gear Operated)
 Type of Pattern : Replaceable Seat & Disc
 Pressure/Class /Rating : PN-16
 Body Material cum Standard : Cast Iron to IS:210 FG 260
 Type of Seat : EPDM Lining
 Type of Disc : SG Iron
 Stem : AISI 410
 End Details : Suitable between Flanges ASME B 16.1 or Class -125
 Body Test Pressure : 2.4MPa (Hyd.)
 Seat Test Pressure : 1.8MPa (Hyd.)

BFX (G)
(A)

HSN CODE : 84818030

8	200	15459
10	250	24679
12	300	29460
14	350	46615
16	400	60486



Product : Sant C.I. Butterfly Valve Wafer Type (Lever Operated)
 Type of Pattern : Replaceable Seat & Disc
 Pressure/Class /Rating : PN16
 Body Material cum standard : Cast Iron to IS:210 FG 260
 Type of Lining : EPDM Lining
 Type of Disc : SS 304
 Stem : AISI-410
 End Details : Suitable between Flanges as ASME B 16.1 or Class-125
 Body Test Pressure : 2.4MPa (Hyd.)
 Seat Test Pressure : 1.8MPa (Hyd.)

BFY
(A)

HSN CODE : 84818030

2	50	3797
2½	65	4079
3	80	4963
4	100	6138
5	125	8258
6	150	9341
8	200	17572

*NOTE : BUTTERFLY VALVES FROM 40MM TO 150MM WILL BE LEVER OPERATED AND SIZE 200MM AND ABOVE WILL BE GEAR OPERATED

10 bar = 1MPa = 145 Psig. = 10.1972 Kg/cm²



BFY (G)
(A)

Product : Sant C.I. Butterfly Valve Wafer Type (Gear Operated)
 Type of Pattern : Replaceable Seat & Disc
 Pressure/Class /Rating : PN16
 Body Material cum standard : Cast Iron to IS:210 FG 260
 Type of Seat : EPDM Lining
 Type of Disc : SS 304
 Stem : AISI-410
 End Details : Suitable between Flanges as ASME B 16.1 or Class -125
 Body Test Pressure : 2.4MPa (Hyd.)
 Seat Test Pressure : 1.8MPa (Hyd.)

HSN CODE : 84818030

Size/Inch	mm	Price / Pc.
8	200	19627
10	250	32217
12	300	40580
14	350	70240
16	400	86632



ABF
(A)

Product : SANT Aluminum Butterfly Valve
 Standard : Conforming to IS: 13095
 Pressure : PN-16
 Body Material : Aluminium Die Cast to IS: 617 Gr 4520
 Product Description : Wafer type
 Type of Seat : EPDM Rubber Lining
 Type of Disc : SS 316 (CF8M)
 Stem : SS 410
 End Details : WAFER TYPE
 Body Test Pressure : 2.4MPa Hyd
 Seat Test Pressure : 1.8MPa Hyd.

HSN CODE : 84818030

1½	40	4055
2	50	5410
2½	65	5999
3	80	6720
4	100	8053
5	125	11126
6	150	11882
8	200	24003
8	With G/o 200	30288



CR 31

Product : Sant C.I. Reflux Valve (Non-Return Valve)
 Product Standard : IS 5312 Part-I, ISI MARKED
 Type of Pattern : Straight Type
 Body Material cum standard : IS-210 Gr. FG-200 Cast Iron
 Product Description : Bolted Cover
 Type of Seat : Integral Seat / Renewable
 Type of Disc : Renewable
 Trim : Body Seat Ring Gun Metal & Seat Ring Rubber
 End Details : Flanges as per IS:1538
 Body Test Pressure : 1.5 MPa Hyd.
 Seat Test Pressure : 1.0 MPa Hyd.

HSN CODE : 84813000

2	50	5333
2½	65	6562
3	80	8411
4	100	11223
5	125	19467
6	150	22503
8	200	40202
10	250	66792
12	300	88284



CR 31A

Product : Sant C.I. Reflux Valve (Non-Return Valve)
 Product Standard : IS 5312 Part-I, ISI MARKED
 Type of Pattern : Straight Type
 Pressure/Class/Rating : PN-1.6
 Body Material cum standard : IS-210 Gr. FG-200 Cast Iron
 Product Description : Bolted Cover
 Type of Seat : Integral Seat / Renewable
 Type of Disc : Renewable
 Trim : Body Seat Ring Gun Metal & Seat Ring Rubber
 End Details : Flanges as per IS-1538
 Body Test Pressure : 2.4MPa (348Psig. Hyd.)
 Seat Test Pressure : 1.6MPa (232Psig. Hyd.)

HSN CODE : 84813000

2	50	5710
2½	65	7017
3	80	9003
4	100	12006
5	125	20830
6	150	24077
8	200	43019
10	250	71472
12	300	94463



Product : Sant Dual Plate Wafer Check Valve
 Pressure/Class /Rating : PN-16
 Body Material cum standard : CI IS 210 Gr. FG: 200
 Product Description : Wafer type spring loaded
 Type of Seat : EPDM Rubber Lining
 Type of Disc : Ductile Iron Disc
 Trim : Spring & Pins SS 304
 End Details : Wafer type suitable for clamping between flanges as per ASME B 16.5 Class-150
 Body Test Pressure : 24 kg/cm²g Hyd.
 Seat Test Pressure : 16 kg/cm²g Hyd.

DP

HSN CODE : 84813000

Size/Inch	mm	Price / Pc.
2	50	4270
2½	65	4727
3	80	6223
4	100	7898
5	125	9456
6	150	12013
8	200	22362
10	250	32912
12	300	44715
14	350	64003
16	400	80908



Product : Sant Dual Plate Check Valve
 Pressure/Class /Rating : PN-16
 Body Material cum standard : CI: IS: 210 Gr. FG: 200
 Product Description : Wafer type spring loaded
 Type of Seat : EPDM Rubber Lining
 Type of Disc : SS 304 (CF 8)
 Trim : Spring & Pins SS 304
 End Details : Wafer type suitable for clamping between flanges as per ASME B 16.5 Class-150
 Body Test Pressure : 24 kg/cm²g Hyd.
 Seat Test Pressure : 16 kg/cm²g Hyd.

DP-1A

HSN CODE : 84813000

2	50	4450
2½	65	5336
3	80	7308
4	100	8773
5	125	11427
6	150	15689
8	200	25681
10	250	45809
12	300	61626



Product : Sant Dual Plate Wafer Check Valve
 Pressure/Class /Rating : PN-25
 Body Material cum standard : Ductile Iron
 Product Description : Wafer type spring loaded
 Type of Seat : EPDM Rubber Lining
 Type of Disc : SS 304 (CF-8)
 Trim : Spring & Pins SS
 End Details : Wafer type suitable for clamping between flanges as per ASME B 16.5 Class-150
 Body Test Pressure : 3.8 MPa Hyd.
 Seat Test Pressure : 2.7 MPa Hyd.

DP 2

HSN CODE : 84813000

2	50	5218
2½	65	5746
3	80	7572
4	100	9235
5	125	11478
6	150	15989
8	200	27032
10	250	57322
12	300	80961



Product : Sant Single Plate Wafer Check Valve
 Body Material cum standard : M.S (Carbon Steel)
 Pressure/Class /Rating : PN-16
 Product Description : Single Plate Wafer Check Valve
 Type of Seat : NBR
 Type of Disc : M.S (Carbon Steel)
 End Details : Wafer Type
 Body Test Pressure : 24kg/cm²g (Hyd.)
 Seat Test Pressure : 16kg/cm²g (Hyd.)

SP

HSN CODE : 84813000

2	50	2104
2½	65	2321
3	80	3041
4	100	3910
6	150	7009
8	200	10957
10	250	14115
12	300	20526
14	350	35060
16	400	48039



Product : Sant Cast Steel Globe Valve
 Product Standard : BS:EN-13709 / BS: 5160 / DIN 2401
 Pressure/Class /Rating : PN-40
 Body Material cum standard : CCS (ASTM A-216 Gr. WCB)
 Product Description : Bolted Bonnet O/S & Yoke type Rising Stem
 Type of Seat : Renewable Seat
 Type of Disc : Renewable Disc
 Trim : Stainless Steel AISI-410
 End Details : Flanges as per BS 4504 Part-1/DIN 2545 RF undrilled
 Body Test Pressure : 76barg (1100 Psig.) Hyd.
 Seat Test Pressure : 40barg (580 Psig.) Hyd.

CS 1

HSN CODE : 84818030

Size/Inch	mm	Price / Pc.
1/2	15	5844
3/4	20	6306
1	25	7379
1¼	32	10309
1½	40	12276
2	50	15722
2½	65	23795
3	80	30725
4	100	45287
5	125	63990
6	150	100281
8	200	182021
10	250	311227
12	300	414670



Product : Sant Cast Steel Horizontal Check Valve
 Product Standard : BS:EN-13709/ BS: 5160 / DIN 2401
 Pressure/Class /Rating : PN-40
 Body Material cum standard : CCS (ASTM A-216 Gr. WCB)
 Product Description : Bolted Cover
 Type of Seat : Renewable Seat
 Type of Disc : Renewable Disc
 Trim : Stainless Steel AISI-410
 End Details : Flanges as per BS 4504 Part-1/DIN 2545 RF undrilled
 Body Test Pressure : 76barg (1100 Psig.) Hyd.
 Seat Test Pressure : 40barg (580 Psig.) Hyd.

CS 2

HSN CODE : 84813000

1/2	15	5738
3/4	20	6054
1	25	6970
1¼	32	9097
1½	40	10020
2	50	13564
2½	65	20230
3	80	26683
4	100	39911
5	125	58169
6	150	93840
8	200	177023
10	250	280815
12	300	396955

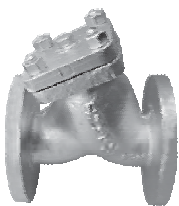


Product : Sant Cast Steel Y-Type Strainer
 Type of Pattern : Y-Type
 Pressure/Class /Rating : CL-300
 Body Material cum standard : CCS (ASTM A-216 Gr. WCB)
 Product Description : Bolted Bonnet
 Screen : 1.2mm perforation SS 304
 End Details : Flanges as per ASME B 16.5 CL- 300 R.F.
 Body Test Pressure : 76 Bar Hyd. (1110 Psig)
 Maximum Working Pressure : Max. BOP 35.5 kg/cm² at 400°C

CS 3

HSN CODE : 84818030

1	25	8105
1½	40	13998
2	50	16383
2½	65	21865
3	80	29780
4	100	45274
5	125	64198
6	150	99058



Product : Sant Cast Steel Y Type Strainer
 Type of Pattern : Y Type
 Body Material cum standard : CCS (ASTM A-216 Gr. WCB)
 Product Description : Bolted Cover 'Y' Type
 Trim : AISI 304, Screen 1.2mm dia perforation
 End Details : Flanges as per BS10 Table F/Class-150
 Body Test Pressure : 40kg/cm² Hyd.
 Maximum Working Pressure : 20kg/cm²
 Maximum Working Temperature : 400°C

CS 3A

HSN CODE : 84818030

1½	40	7796
2	50	11159
2½	65	13563
3	80	19291
4	100	25638
6	150	57782
8	200	81088



Product : Sant C.S. Parallel Slide Blow Off Valve
 Body Material cum standard : CCS (ASTM A-216 Gr. WCB)
 Product Description : Rack and Pinion operated with key
 Type of Seat : Renewable Seat
 Type of Disc : Renewable Disc
 Trim : SS AISI 410/Monel
 End Details : Flanges as per BS10 Table J F.F. Undrilled
 Test Pressure : 700Psig. Hyd. 49.23kg/cm²g
 Working Pressure : Max. BOP 350 Psig. 24.61kg/cm²g at 400°C

Size/Inch	mm	Price / Pc.
1	25	18425
1¼	32	28718
1½	40	33207
2	50	44442
2½	65	55900

CS 4

HSN CODE : 84818030



Product : Sant Cast Steel Parallel Slide Blow Off Valve
 Body Material cum standard : CCS (ASTM A-216 Gr. WCB)
 Product Description : Rack and Pinion operated with key
 Disc & Body Ring : AISI 410 (Hard Faced)
 End Details : Flanges as per ASME B 16.5 Cl-300 R.F.
 Body Test Pressure : 76 Barg. Hyd.
 Minimum Working Pressure : 28.8kg/cm²
 Maximum Working Pressure : 425°C

1	25	18978
1¼	32	29579
1½	40	34202
2	50	45775
2½	65	57578

CS 4A

HSN CODE : 84818030



Product : Sant Cast Steel Accessible Feed Check Valve
 Type of Pattern : Right Angle
 Body Material cum standard : CCS (ASTM A-216 Gr. WCB)
 Product Description : Bolted Bonnet O/S & Yoke type Rising Stem
 Type of Seat : Renewable Seat
 Type of Disc : Renewable Disc
 Trim : SS AISI-410/Monel
 End Details : Flanges as per BS10 Table J F.F. Undrilled
 Body Test Pressure : 700Psig. Hyd. 49.23kg/cm²g
 Working Pressure : Max. BOP 350 Psig. 24.61kg/cm²g at 400°C

1	25	19059
1½	40	32591
2	50	51700
2½	65	67030
3	80	100230

CS 5

HSN CODE : 84813000



Product : Sant C.S. Sleeve packed water level gauge
 Body Material cum standard : CCS (ASTM A-216 Gr. WCB)
 Product Description : With automatic shut off device in the water ARM
 Right Hand/Left Hand Type
 Trim : SS AISI-410 stem, SS 304 Ball
 End Details : Flanges as per BS10 Table J F.F. Undrilled
 Body Test Pressure : 700Psig. Hyd. 49.23kg/cm²g
 Working Pressure : Max. BOP 350 Psig. 24.61kg/cm²g at 400°C

¾	20	23082

CS 6

HSN CODE : 84818030



Product : Sant Cast Steel Gate Valve
 Product Standard : Conforming to BS:EN-10434/API-600/BS:1414
 Type of Pattern : Straight
 Pressure/Class /Rating : Class-150
 Body Material cum standard : CCS (ASTM A-216 Gr. WCB)
 Product Description : Bolted Bonnet O/S Yoke type Rising Stem
 Type of Seat : Renewable Seat
 Type of Wedge : Solid / Flexible
 Trim : SS AISI-410 with Aluminum Bronze Sleeve
 End Details : Flanges as per ASME B 16.5 Class 150 R.F., undrilled
 Body Test Pressure : 30barg Hyd. (435 Psig)
 Seat Test Pressure : 22barg(320Psig.) Hyd. 6.9barg AIR (100Psig.)

Size/Inch	mm	Price / Pc.
1	25	11996
1½	40	19889
2	50	22442
2½	65	28091
3	80	32696
4	100	42942
5	125	62475
6	150	73274
8	200	111629
10	250	172072
12	300	250582

CS 7

HSN CODE : 84818030



Product : Sant Cast Steel Gate Valve
 Product Standard : Conforming to BS:EN-10434/API-600/BS:1414
 Type of Pattern : Straight
 Pressure/Class /Rating : Class-300
 Body Material cum standard : CCS (ASTM A-216 Gr. WCB)
 Product Description : Bolted Bonnet O/S Yoke type Rising Stem
 Type of Seat : Renewable Seat
 Type of Wedge : Solid / Flexible
 Trim : SS AISI-410 with Aluminum Bronze Sleeve
 End Details : Flanges as per ASME B 16.5 Class 300 R.F., undrilled
 Body Test Pressure : 76barg Hyd. (1110 Psig)
 Seat Test Pressure : 56barg(815Psig.) Hyd. 6.9barg AIR (100Psig.)

1½	40	20418
2	50	24497
2½	65	31624
3	80	37948
4	100	58610
5	125	96132
6	150	112718
8	200	170788
10	250	308644
12	300	476104

CS 7A

HSN CODE : 84818030



Product : Sant Cast Steel Gate Valve
 Product Standard : Conforming to BS:EN-10434/API 600/BS:1414
 Type of Pattern : Straight Type
 Pressure / Class Rating : Class 600
 Body Material cum standard : CCS (ASTM A-216 Gr. WCB)
 Product Description : Bolted Bonnet O/S Yoke Type Rising Stem
 Type of Seat : Renewable
 Type of Wedge : Solid/Flexible Wedge
 Trim : SS AISI-410 & Aluminium Bronze Sleeves
 End Details : Flanges as per ASME B 16.5 Class 600 RF Undrilled
 Body Test Pressure : 153 Barg (2220 Psig.) Hyd.
 Seat Test Pressure : 112 Barg (1630 Psig.) Hyd. 6.9barg
 100 Psig. (AIR)

1½	40	27319
2	50	43376
2½	65	54566
3	80	71688
4	100	117313
6	150	221628
8	200	356759

CS 7B

HSN CODE : 84818030



Product : Sant Cast Steel Swing Check Valve
 Product Standard : Conforming to BS:EN-16767/ANSI B 16.34/BS:1868
 Pressure / Class Rating : Class 150
 Body Material cum standard : CCS (ASTM A-216 Gr. WCB)
 Product Description : Bolted Cover
 Type of Seat : Renewable Seat
 Type of Disc : Renewable Disc
 Hinge Pin : AISI 410 Stainless Steel
 End Details : Flanges as per ASME B 16.5 Class-150 R.F. Undrilled
 Body Test Pressure : 30barg Hyd. (435Psig.)
 Seat Test Pressure : 22barg Hyd. (320Psig.)

1½	40	12812
2	50	17524
2½	65	24597
3	80	28289
4	100	40227
5	125	53088
6	150	60880
8	200	104536

CS 8

HSN CODE : 84813000



Product : Sant Cast Steel Horizontal Check Valve
 Product Standard : BS:EN-16767 / BS: 1868
 Pressure / Class Rating : Class 300
 Body Material cum standard : CCS (ASTM A-216 Gr. WCB)
 Product Description : Bolted Bonnet
 Type of Seat : Renewable Seat
 Type of Disc : Renewable Disc
 Trim : SS AISI-410
 End Details : Flanges as per ASME B 16.5 Class 300 Undrilled
 Body Test Pressure : 76 Barg (1102 Psig.) Hyd.
 Seat Test Pressure : 56 Barg (815 Psig.) Hyd. 6.9 Barg (100 Psig.) AIR

Size/Inch	mm	Price / Pc.
1	25	7682
1¼	32	9921
1½	40	12149
2	50	17297
2½	65	25544
3	80	33603
4	100	48812
6	150	96215
8	200	146275
10	250	236560
12	300	335348

CS 8A

HSN CODE : 84813000



Product : Sant Cast Steel Horizontal Check Valve
 Product Standard : BS:EN-16767 / BS: 1868
 Pressure / Class Rating : Class 150
 Body Material cum standard : CCS (ASTM A-216 Gr. WCB)
 Product Description : Bolted Bonnet
 Trim : SS AISI-410
 End Details : Flanges as per ASME B 16.5 Class 150 R.F.
 Body Test Pressure : 30 Barg Hyd.
 Seat Test Pressure : 22 Barg Hyd. 6.9 Barg (100 Psig.)

1	25	5275
1¼	32	6660
1½	40	8262
2	50	13222
2½	65	21577
3	80	27044
4	100	42883
5	125	57371
6	150	87849
8	200	126548
10	250	197309
12	300	294076

CS 8B

HSN CODE : 84813000



Product : Sant Cast Steel Globe Valve
 Product Standard : Conforming to BS 1873-1975
 Pressure/Class /Rating : Class-150
 Body Material cum standard : CCS (ASTM A-216 Gr. WCB)
 Product Description : Bolted Bonnet O/S Yoke Type Rising Stem
 Type of Seat : Renewable Seat
 Type of Disc : Renewable Disc
 Stem : SS AISI-410 component with Aluminum Bronze Yoke Bush
 End Details : Flanges as per ASME B 16.5 Class-150 Undrilled
 Body Test Pressure : 30barg Hyd. (435Psig.)
 Seat Test Pressure : 22barg Hyd. (320Psig.), 6.9 Barg Air (100 Psig.)

1	25	8703
1¼	32	12103
1½	40	13971
2	50	19603
2½	65	25134
3	80	33049
4	100	46918
5	125	74100
6	150	85612
8	200	129000
10	250	208979
12	300	307026

CS 9

HSN CODE : 84818030



Product : Sant Cast Steel Globe Valve
 Product Standard : Conforming to BS 1873-1975
 Pressure/Class /Rating : Class-300
 Body Material cum standard : CCS (ASTM A-216 Gr. WCB)
 Product Description : Bolted Bonnet O/S Yoke type Rising Stem
 Type of Seat : Renewable Seat
 Type of Disc : Renewable Disc
 Trim : SS AISI-410 component with Aluminum Bronze Yoke Bush
 End Details : Flanges as per ASME B 16.5 Class-300 Undrilled
 Body Test Pressure : 76barg Hyd. (1102 Psig.)
 Seat Test Pressure : 56barg Hyd. (815Psig.) 6.9barg (100Psig.) AIR

1	25	10846
1¼	32	15267
1½	40	16812
2	50	22088
2½	65	34941
3	80	40368
4	100	58234
6	150	106841
8	200	159056
10	250	378638
12	300	494378

CS 10

HSN CODE : 84818030



CS 10A

Product : Sant Cast Steel Globe Valve
 Product Standard : BS 1873
 Pressure / Class Rating : Class 600
 Body Material cum standard : CCS (ASTM A-216 Gr. WCB)
 Product Description : Bolted Bonnet O/S Yoke Type Rising Stem
 Type of Seat : Renewable
 Type of Disc : Renewable Disc
 Trim : SS AISI-410
 End Details : Flanges as per ASME B 16.5 Class 600 RF Undrilled
 Body Test Pressure : 153 Barg (2220 Psig.) Hyd.
 Seat Test Pressure : 112 Barg (1630 Psig.) Hyd. 6.9barg
 100 Psig. (AIR)

HSN CODE : 84818030

Size/Inch	mm	Price / Pc.
1½	40	23952
2	50	35915
2½	65	48867
3	80	63407
4	100	108781
6	150	243461
8	200	439219



CS 11

Product : Sant Cast Steel Ball Valve
 Product Standard : BS:EN-17292 / API 6D/BS:5351
 Type of Pattern : Straight Type
 Pressure/Class /Rating : Class-150
 Body Material cum standard : CCS (ASTM A-216 Gr. WCB)
 Product Description : Three Piece design Lever Operated
 Type of Seat : Renewable Seat
 Trim : Stem: 13% Cr. Steel ASTM A-276 Type-410
 Ball : SS (ASTM A 351 Gr. CF 8/AISI-304)
 Seat Ring & Gland Packing PTFE
 End Details : Flanges as per ASME B 16.5 Class 150 R.F., undrilled
 Body Test Pressure : 30barg Hyd. (435 Psig)
 Seat Test Pressure : 22barg(320Psig.) Hyd. 6.9barg AIR (100 Psig.)
 Maximum Working Temperature : 250°C

HSN CODE : 84818030

1	25	4760
1½	40	8531
2	50	11428
2½	65	16302
3	80	20694
4	100	33209



CS 12

Product : Sant Cast Steel Single Post Full Lift Safety Valve
 Type of Pattern : Right Angle
 Body Material cum standard : CCS (ASTM A-216 Gr. WCB)
 Product Description : Spring Loaded Full Lift
 Type of Seat : Renewable Seat
 Type of Disc : Renewable Disc
 Trim : SS to AISI 304
 End Details : Inlet Flanges to BS 10 Table-H
 Outlet Flanges to BS 10 Table-E
 Body Test Pressure : 53kg/cm²g Hyd.
 Maximum Working Pressure : 26.5kg/cm²g
 Maximum Working Temperature : 425°C

HSN CODE : 84814000

1 x 2	25 x 50	26498
1½ x 2	40 x 50	36920
1½ x 3	40 x 80	41255
2 x 3	50 x 80	56227
3 x 4	80 x 100	84679



CS 12-A

Product : Sant Cast Steel Single Post Full Lift Safety Valve
 Type of Pattern : Right Angle Enclosed Discharge
 Body Material cum standard : CCS (ASTM A-216 Gr. WCB)
 Product Description : Spring Loaded Full Lift
 Trim : AISI 304
 End Details : Inlet Flanges to BS 10 Table-H
 Outlet: Flanges to BS 10 Table-E
 Body Test Pressure : 53kg/cm²g Hyd.
 Maximum Working Pressure : 26.5kg/cm²g Hyd.
 Maximum Working Temperature : 425°C

HSN CODE : 84814000

1 x 2	25 x 50	28025
1½ x 2	40 x 50	39047
1½ x 3	40 x 80	43634
2 x 3	50 x 80	59470
3 x 4	80 x 100	89656



Product : Sant Cast Steel Single Post Safety Valve
 Type of Pattern : Right Angle
 Body Material cum standard : CCS (ASTM A-216 Gr. WCB)
 Product Description : Bolted Bonnet
 Trim : SS to AISI 304
 End Details : Inlet Flanges to BS 10 Table-H
 Outlet: Flanges to BS 10 Table-E
 Body Test Pressure : 53kg/cm² Hyd.
 Maximum Working Pressure : 26.5kg/cm² Hyd.
 Maximum Working Temperature : 400°C

**(FOR THERMIC FLUID)
 (NON IBR)**

CS 12-B

HSN CODE : 84814000

Size/Inch	mm	Price / Pc.
1 x 2	25 x 50	27746
1½ x 2	40 x 50	38657
1½ x 3	40 x 80	43198
2 x 3	50 x 80	58876
3 x 4	80 x 100	88759



Product : Sant Cast Steel Moisture Separator
 Body Material cum standard : CCS (ASTM A-216 Gr. WCB)
 Product Description :
 End Details : Flanges as per BS10 Table F
 Body Test Pressure : 40kg/cm² Hyd.
 Maximum Working Temperature : 20kg/cm²

CS 13

HSN CODE : 84818030

1	25	6983
1½	40	10347
2	50	17199
2½	65	24076
3	80	27676
4	100	53401

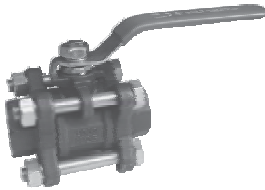


CSPVF
(A)

Product : Sant Cast Steel Piston Valves
 Pressure/Class /Rating : Class-150
 Body Material Cum Standard : C.C.S. (ASTM A-216 Gr. WCB)
 Product Description : Bolted Bonnet O.S. Yoke Type Rising Stem
 Type of Seat : Renewable
 Type of Wedge : Piston Type
 Trim : AISI 410
 End Details : Flanges as per ASME B 16.5 Class-150
 Body Test Pressure : 30 Barg (435Psig.) Hyd.
 Seat Test Pressure : 22 Barg (350Psig.) Hyd.
(Available With IBR TC on Requirement With Extra Rate)

HSN CODE : 84818090

Size/Inch	mm	Price / Pc.
1	25	8431
1½	40	13855
2	50	16359
2½	65	24828
3	80	31234
4	100	43369
6	150	87867



WCB

Product : Sant Cast Steel Ball Valve (WCB)
 Pressure Temperature Rating : 69 Barg at 30°C, 5 Bar at 225°C
 Body Material cum standard : CCS (ASTM A 216 Gr. WCB)
 Product Description : Three PC design, Lever Operated
 Type of Seat : Renewable PTFE with Carbon Filled
 Trim (STEM) : SS AISI 410
 Ball : S.S. AISI 304 / CF 8
 Gland Packing : PTFE
 End Details : Screwed End BSP Taper Threads
 Body Test Pressure : 104 Barg Hyd.
 Seat Test Pressure : 76 Barg Hyd.

HSN CODE : 84818090

1/2	15	1891
3/4	20	2241
1	25	3142
1¼	32	4559
1½	40	6185
2	50	7572

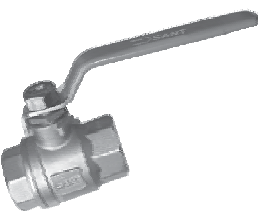


CSF

Product : Sant Cast Steel Ball Valve (F)
 Type of Pattern : Three Pc Design
 Pressure/Class/Rating : Class-150
 Body Material cum standard : CCS (ASTM A 216 Gr. WCB)
 Type of Seat : Ring PTFE
 Ball : S.S. AISI 304/CF 8
 Stem: S.S 304
 End Details : Flanges as per B 16.5 CL-150
 Body Test Pressure : 425 Psig. Hyd.
 Seat Test Pressure : 300 Psig. Hyd.

HSN CODE : 84818090

1	25	3483
1½	40	5833
2	50	7830
2½	65	13951
3	80	15464
4	100	25487



FMBV

Product : MS Forged Ball Valve-2 Pc (SC)
 Body Material : FCS (A105)
 Ball : AISI 304
 Trim : AISI 304
 End details : BSP
 Body Test Pressure : 60kg/cm2 Hyd.
 Working Pressure : 40kg/cm2 Hyd.

HSN CODE : 84818090

1/2	15	392
3/4	20	480
1	25	650
1¼	32	1148
1½	40	1628
2	50	2644



Product : Sant Forged Steel Gate Valve
 Product Standard : Conforming to BS:EN-15761 / API 602/BS:5352
 Pressure/Class /Rating : Class-800
 Body Material cum standard : FCS (A 105)
 Product Description : Bolted Bonnet O/S & Yoke type Rising Stem
 Type of Seat : Renewable Seat
 Type of Disc : Renewable Disc
 Trim : SS Type 410
 End Details : Screwed female NPT threads
 Fastner & Gasket : Alloy Steel (Gr. B7/2H)
 Spiral Wound SS 304 (CAF/Graphite filled)
 Body Test Pressure : 207 barg Hyd. (3000 Psig)
 Seat Test Pressure : 152 barg (2200Psig) Hyd. (6.9barg(100Psig) AIR

HSN CODE : 84818030

Size/Inch	mm	Price / Pc.
3/8	10	2610
1/2	15	2610
3/4	20	3200
1	25	4398
1¼	32	7912
1½	40	9103
2	50	12839

FSV 1A



Product : Sant Forged Steel Gate Valve
 Product Standard : Conforming to BS:EN-15761 / API 602/BS:5352
 Pressure/Class /Rating : Class-800
 Body Material cum standard : FCS (A 105)
 Product Description : Bolted Bonnet O/S & Yoke type Rising Stem
 Type of Seat : Renewable Seat
 Type of Disc : Renewable Disc
 Trim : SS Type 410
 End Details : Socket Welded Ends as per ASME B 16.11
 Fastner & Gasket : Alloy Steel (Gr. B7/2H)
 Spiral Wound SS 304 (CAF/Graphite filled)
 Body Test Pressure : 207 barg Hyd. (3000 Psig)
 Seat Test Pressure : 152 barg (2200Psig) Hyd. (6.9barg(100Psig) AIR

HSN CODE : 84818030

3/8	10	2610
1/2	15	2610
3/4	20	3200
1	25	4398
1¼	32	7912
1½	40	9103
2	50	12839

FSV 1B



Product : Sant Forged Steel Globe Valve
 Product Standard : BS:EN-15761/API 602/BS:5352
 Pressure/Class /Rating : Class-800
 Body Material cum standard : FCS (A 105)
 Product Description : Bolted Bonnet O/S Yoke type Rising Stem
 Type of Seat : Renewable Seat
 Type of Disc : Renewable Disc
 Trim : SS AISI-410
 End Details : Screwed Female NPT Threads
 Fastners & Gaskets : Alloy Steel (Gr. B7/2H)/Spiral wound
 SS304(CAF/Graphite filled)
 Body Test Pressure : 207 barg (3000Psig.) Hyd.
 Seat Test Pressure : 152 barg(2200Psig.) Hyd. 6.9barg 100Psig. AIR

HSN CODE : 84818030

3/8	10	2548
1/2	15	2548
3/4	20	3200
1	25	4367
1¼	32	7469
1½	40	9133
2	50	13366

FSV 2A



Product : Sant Forged Steel Globe Valve
 Product Standard : BS:EN-15761/API 602/BS:5352
 Pressure/Class /Rating : Class-800
 Body Material cum standard : FCS (A 105)
 Product Description : Bolted Bonnet O/S Yoke type Rising Stem
 Type of Seat : Renewable Seat
 Type of Disc : Renewable Disc
 Trim : SS AISI-410
 End Details : Socket Welded Ends as per ASME B 16.11
 Fastners & Gaskets : Alloy Steel (Gr. B7/2H)
 Spiral Wound SS304(CAF/Graphite filled)
 Body Test Pressure : 207 barg (3000Psig.) Hyd.
 Seat Test Pressure : 152 barg(2200Psig.) Hyd. 6.9barg 100Psig. AIR

HSN CODE : 84818030

3/8	10	2548
1/2	15	2548
3/4	20	3200
1	25	4367
1¼	32	7469
1½	40	9133
2	50	13366

FSV 2B



Product : Sant Forged Steel Horizontal Lift Check Valve
 Product Standard : BS:EN-15761/API 602/BS:5352
 Pressure/Class /Rating : Class-800
 Body Material cum standard : FCS (A 105)
 Product Description : Bolted Cover
 Type of Seat : Renewable Seat
 Type of Disc : Renewable Disc
 Trim : SS AISI 410
 Fastners : Alloy Steel (Gr. B7/2H)
 End Details : Screwed female NPT threads
 Gasket : Spiral Wound SS 304 (CAF / Graphite Filled)
 Body Test Pressure : 207 (3000 Psig.) barg Hyd.
 Seat Test Pressure : 152 barg (2200Psig.) Hyd. (6.9 (100 Psig.) barg AIR

FSV 3A

HSN CODE : 84813000

Size/Inch	mm	Price / Pc.
3/8	10	2102
1/2	15	2102
3/4	20	2375
1	25	3484
1½	40	8176
2	50	11900



Product : Sant Forged Steel Horizontal Lift Check Valve
 Product Standard : BS:EN-15761/API 602/BS:5352
 Pressure/Class /Rating : Class-800
 Body Material cum standard : FCS (A 105)
 Product Description : Bolted Cover
 Type of Seat : Renewable Seat
 Type of Disc : Renewable Disc
 Trim : SS AISI 410
 Fastners : Alloy Steel (Gr. B7/2H)
 End Details : Socket Welded Ends as per ASME B 16.11
 Gasket : Spiral Wound SS 304 (CAF / Graphite Filled)
 Body Test Pressure : 207 (3000 Psig.) barg Hyd.
 Seat Test Pressure : 152 barg (2200Psig.) Hyd. 6.9 (100 Psig.) barg AIR

FSV 3B

HSN CODE : 84813000

3/8	10	2102
1/2	15	2102
3/4	20	2375
1	25	3484
1½	40	8176
2	50	11900



Product : Sant Forged Stainless Steel Thermodynamic Steam Trap
 Body Material cum standard : FSS (AISI 410)
 Product Description : Thermodynamic Type with inbuilt Strainer
 Trim : SS AISI-410
 End Details : Screwed Female BSP Taper threads to BS-21
 Body Test Pressure : 63.3 kg/cm²g 900Psig. Hyd.
 Working Pressure : Suitable for max. BOP 450Psig.(31.65kg/cm²g) at 750°F (400°C)

FSV 4A

HSN CODE : 84818030

1/2	15	2794
3/4	20	3379
1	25	4550



Product : Sant Forged Stainless Steel Thermodynamic Steam Trap
 Body Material cum standard : FSS (AISI 410)
 Product Description : Thermodynamic Type with inbuilt Strainer
 Trim : SS AISI-410
 End Details : Socket Welded Ends as per ASME B 16.11
 Body Test Pressure : 63.3 kg/cm²g 900Psig. Hyd.
 Seat Test Pressure : Suitable for max. BOP 450Psig.(31.65kg/cm²g) at 750°F (400°C)

FSV 4B

HSN CODE : 84818030

1/2	15	2794
3/4	20	3379
1	25	4550



FSV 5A

Product : Sant Forged Steel Wedge Gate Valve
 Product Standard : BS:EN-15761/API 602/BS:5352
 Type of Pattern : Standard Bore
 Pressure/Class /Rating : Class-800
 Body Material cum standard : FCS (A 105)
 Product Description : Bolted Bonnet O/S & Yoke type Rising Stem
 Type of Seat : Renewable Seat
 Type of Disc : Solid Wedge
 Trim : SS AISI 410 HSN CODE : 84818030
 Fastners : Alloy Steel (Gr. B7/2H)
 End Details : Screwed female NPT threads
 Gasket : Spiral wound SS 304/(CAF/Graphite Filled)
 Body Test Pressure : 207 barg Hyd.(3000 Psig)
 Seat Test Pressure : 152 barg (2200Psig.) Hyd. (6.9barg (100Psig.) AIR

Size/Inch	mm	Price / Pc.
1/2	15	3200
3/4	20	4398
1	25	7912
1¼	32	9103
1½	40	12839



FSV 5B

Product : Sant Forged Steel Wedge Gate Valve
 Product Standard : BS:EN-15761/API 602/BS:5352
 Type of Pattern : Standard Bore
 Pressure/Class /Rating : Class-800
 Body Material cum standard : FCS (A 105)
 Product Description : Bolted Bonnet O/S & Yoke type Rising Stem
 Type of Seat : Renewable Seat
 Type of Disc : Solid Wedge
 Trim : SS AISI 410 HSN CODE : 84818030
 Fastners : Alloy Steel (Gr. B7/2H)
 End Details : Socket Welded Ends as per ASME B16.11
 Gasket : Spiral wound SS 304/(CAF/Graphite Filled)
 Body Test Pressure : 207 barg (3000Psig.) Hyd.
 Seat Test Pressure : 152 barg (2200Psig.) Hyd. (6.9barg (100Psig.) AIR

Size/Inch	mm	Price / Pc.
1/2	15	3200
3/4	20	4398
1	25	7912
1¼	32	9103
1½	40	12839



FSV 6A

Product : Sant Forged Steel Globe Valve
 Product Standard : conforming to BS:EN-15761/API 602/BS:5352
 Type of Pattern : Standard Bore
 Pressure/Class /Rating : Class-800
 Body Material cum standard : FCS (A 105)
 Product Description : Bolted Bonnet O/S Yoke type Rising Stem
 Type of Seat : Renewable Seat
 Type of Disc : Renewable Disc
 Trim : Type 410 HSN CODE : 84818030
 Fastners : Alloy Steel (Gr. B7/2H)
 End Details : Screwed Female NPT Threads
 Gaskets : Spiral wound SS 304/(CAF/Graphite Filled)
 Body Test Pressure : 207 barg (3000Psig.) Hyd.
 Seat Test Pressure : 152 barg(2200Psig.) Hyd. 6.9barg (100Psig.) AIR

Size/Inch	mm	Price / Pc.
1/2	15	3200
3/4	20	4335
1	25	7469
1¼	32	9133
1½	40	13366



FSV 6B

Product : Sant Forged Steel Globe Valve
 Product Standard : conforming to BS:EN-15761/API 602/BS:5352
 Type of Pattern : Standard Bore
 Pressure/Class /Rating : Class-800
 Body Material cum standard : FCS (A 105)
 Product Description : Bolted Bonnet O/S Yoke type Rising Stem
 Type of Seat : Renewable Seat
 Type of Disc : Renewable Disc
 Trim : Type 410 HSN CODE : 84818030
 Fastners : Alloy Steel (Gr. B7/2H)
 End Details : Socket Welded Ends as per ASME B 16.11
 Gaskets : Spiral wound SS 304/(CAF/Graphite Filled)
 Body Test Pressure : 207 barg (3000Psig.) Hyd.
 Seat Test Pressure : 152 barg(2200Psig.) Hyd. 6.9barg (100Psig.) AIR

Size/Inch	mm	Price / Pc.
1/2	15	3200
3/4	20	4335
1	25	7469
1¼	32	9133
1½	40	13366



FSV 7A

Product : Sant Forged Steel Horizontal Lift Check Valve
 Product Standard : BS:EN-15761/API 602/BS:5352
 Type of Pattern : Standard Bore
 Pressure/Class /Rating : Class-800
 Body Material cum standard : FCS (A 105)
 Product Description : Bolted Cover
 Type of Seat : Renewable Seat
 Type of Disc : Renewable Disc
 Trim : SS AISI 410
 Fastners : Alloy Steel (Gr. B7/2H)
 End Details : Screwed Female NPT-Thread
 Gasket : Spiral Wound SS 304 with CAF/Graphite Filled
 Body Test Pressure : 207 barg Hyd. (3000 Psig)
 Seat Test Pressure : 152 barg (2200Psig.) Hyd.

HSN CODE : 84813000

Size/Inch	mm	Price / Pc.
1/2	15	2375
3/4	20	3484
1¼	32	8176
1½	40	11900



FSV 7B

Product : Sant Forged Steel Horizontal Lift Check Valve
 Product Standard : BS:EN-15761/API 602/BS:5352
 Type of Pattern : Standard Bore
 Pressure/Class /Rating : Class-800
 Body Material cum standard : FCS (A 105)
 Product Description : Bolted Cover
 Type of Seat : Renewable Seat
 Type of Disc : Renewable Disc
 Trim : SS AISI 410
 Fastners : Alloy Steel (Gr. B7/2H)
 End Details : Socket Welded Ends as per ASME B16.11
 Gasket : Spiral wound SS 304/(CAF/Graphite Filled)
 Body Test Pressure : 207 barg (3000Psig.) Hyd.
 Seat Test Pressure : 152 barg (2200Psig.) Hyd.

HSN CODE : 84813000

1/2	15	2375
3/4	20	3484
1¼	32	8176
1½	40	11900



FSV 8A

Product : Sant Forged Steel Gate Valve
 Product Standard : Conforming to BS:EN-15761/API 602/BS:5352
 Pressure Class Rating : Class 1500
 Body Material cum standard : FCS (A 105)
 Product Description : Bolted Bonnet O/S Yoke Type Rising Stem
 Type of Seat : Renewable
 Type of Wedge : Solid Wedge
 Trim : SS AISI-410
 End Details : Socket Welded ends as per ASME B 16.11
 Body Test Pressure : 384 barg Hyd.
 Seat Test Pressure : 281 barg Hyd., 6.9 barg (100 Psig) AIR

HSN CODE : 84818030

1/2	15	4589
3/4	20	6577
1	25	10332
1½	40	18023



FSV 9A

Product : Sant Forged Steel Globe Valve
 Product Standard : Conforming to BS:EN-15761/API 602/BS:5352
 Pressure Class Rating : Class 1500
 Body Material cum standard : FCS (A 105)
 Product Description : Bolted Bonnet O/S Yoke Type Rising Stem
 Type of Seat : Renewable Seat
 Type of Disc : Renewable Disc
 Trim : SS AISI-410
 End Details : Socket Welded ends as per ASME B 16.11
 Body Test Pressure : 384 barg Hyd.
 Seat Test Pressure : 281 barg Hyd., 6.9 barg (100 Psig) AIR

HSN CODE : 84818030

1/2	15	4120
3/4	20	6419
1	25	10723
1½	40	19191

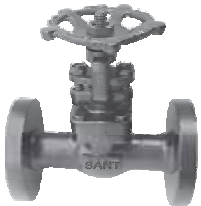


Product : Sant Forged Steel Horizontal Check Valve
 Product Standard : Conforming to BS:EN-15761/API 602/BS:5352
 Pressure Class Rating : Class 1500
 Body Material cum standard : FCS (A 105)
 Product Description : Bolted Cover
 Type of Seat : Renewable Seat
 Type of Disc : Renewable Disc
 Trim : SS AISI-410
 End Details : Socket Welded ends as per ASME B 16.11
 Body Test Pressure : 384 barg Hyd.
 Seat Test Pressure : 281 barg Hyd., 6.9 barg (100 Psig) AIR

Size/Inch	mm	Price / Pc.
1/2	15	3724
3/4	20	5862
1	25	9982
1½	40	18534

FSV 10A

HSN CODE : 84813000

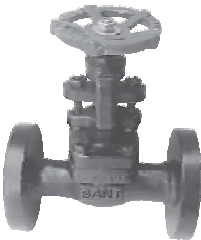


Product : Sant Forged Steel Gate Valve
 Product Standard : API 602/BS:EN-15761/BS:5352
 Type of Pattern : Straight
 Pressure/Class /Rating : Class-600
 Body Material cum standard : FCS ASTM A 105
 Product Description : Bolted Bonnet O/S Yoke Type Rising Stem
 Type of Seat : Renewable Seat
 Type of Wedge : Solid Wedge
 Trim : AISI 410
 End Details : Flanges as ASME B 16.5 Class 600 RF Undrilled
 Body Test Pressure : 153 Barg (2220Psig.) Hyd.
 Seat Test Pressure : 112 Barg (1630Psig.) Hyd. 6.9 Barg (100 Psig) AIR

1/2	15	9027
3/4	20	13078
1	25	17283
1½	40	31040

FSV 11

HSN CODE : 84818030

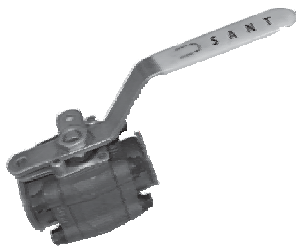


Product : Sant Forged Steel Globe Valve
 Product Standard : API 602/BS:EN-15761
 Pressure Class Rating : Class 600
 Body Material cum standard : FCS ASTM A 105
 Product Description : Bolted Bonnet O/S Yoke Type Rising Stem
 Type of Seat : Renewable Seat
 Type of Disc : Renewable Disc
 Trim : AISI-410
 End Details : Flanges as ASME B 16.5 Class 600 RF Undrilled
 Body Test Pressure : 153 Barg (2220Psig.) Hyd.
 Seat Test Pressure : 112 Barg (1630Psig.) Hyd. 6.9 Barg (100 Psig) AIR

1/2	15	7883
3/4	20	12968
1	25	17151
1½	40	30186

FSV 12

HSN CODE : 84818030



Product : Sant Forged Steel Ball Valve
 Design Standard : ISO 17292/BS:5351
 Body Material : FSC (A 105N)
 Product Description : Three Pc Design Lever Operated
 Trim : ASI 304
 Ball : ASTM A 351 Gr. CF8
 End Details : Screwed End ASME B 1.20.1
 Socket Weld ASME B 16.11
 Body Test Pressure : 207barg (Hyd.)
 Seat Test Pressure : 76barg (Hyd.)

1/2	15	1946
3/4	20	2397
1	25	3290
1½	40	6603
2	50	8150

FSV 13

HSN CODE : 84818030



Product : Sant Forged Steel Piston Valve Screwed End
Body Material : ASTM A 105
Pressure Rating : Class 800
Product Description : Bolted Bonnet O.S. Yoke Type Rising Stem
Type of Piston : AISI 420
End Details : Screwed End NPT Threads
Body Test Pressure : 207barg (Hyd.)
Seat Test Pressure : 152barg (Hyd.)

Size/Inch	mm	Price / Pc.
1/2	15	5353
3/4	20	6983
1	25	9309

FS PVS
(A)

HSN CODE : 84818090



Product : Sant Investment Casting Ball Valve (CF-8)
 Pressure/Class /Rating : PN-40
 Body Material cum standard : SS 304 (CF-8)
 Product Description : Two Piece design
 Type of Seat : Renewable Teflon
 Trim : Stem, Ball Stainless Steel AISI-304
 Gland Packing : Teflon
 End Details : Screwed Female BSP Taper Threads to BS 21
 Body Test Pressure : 60kg/cm² Hyd.
 Seat Test Pressure : 40kg/cm² Hyd.

Size/Inch	mm	Price / Pc.
1/2	15	1527
3/4	20	2031
1	25	2743
1¼	32	4398
1½	40	6731
2	50	10154

IC - 1

HSN CODE : 84818010

WITH IBR CERTIFICATE



Product : Sant S.S. Wafer Disc Check Valve
 Pressure/Class /Rating : PN-40
 Body Material cum standard : CF-8
 Product Description : Wafer Type Spring Loaded
 Type of Disc : Stainless Steel CF-8
 End Details : Wafer Type Suitable for Clamping between Flanges as per ASME B 16.5 Class-150, Class-300, PN-40
 Body Test Pressure : 60 Barg Hyd.
 Seat Test Pressure : 40 Barg Hyd.

1/2	15	731
3/4	20	826
1	25	1395
1¼	32	1967
1½	40	2443
2	50	3555

IC - 2

HSN CODE : 84813000

WITH IBR CERTIFICATE



Product : Sant I.C. Stainless Steel Steam Trap
 Body Material cum standard : Stainless Steel ASTM A 743 Gr. CA40
 Product Description : Thermodynamic Type Steam Trap with inbuilt strainer
 Trim : AISI 420
 End Details : Screwed Female BSP Taper Threads to BS 21
 Body Test Pressure : 63.3 kg/cm² 900 Psig. (Hyd.)
 Working Pressure : Suitable for 450 Psig. (31.65 kg/cm²)
 Maximum Temperature : 400°C (750°F)

1/2	15	2470
3/4	20	2657
1	25	3723

IC - 3

HSN CODE : 84813000

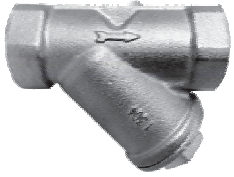


Product : Sant Stainless Steel Sight Glass
 Body : SS 304 (CF8)
 End Details : Screwed Female Thread Parallel Thread
 Test Pressure : 500Psig. Hyd

1	25	1046

IC-4

HSN CODE : 84818020



Product : Sant SS Y Strainer (S)
 Body Material : Stainless Steel ASTM A351 Gr CF8
 Filter Screen : SS 304
 Body Test pressure : 30 kg/cm² Hyd.
 Working Pressure : 20 kg /cm² Hyd.

IC-5

HSN CODE : 84818030

Size/Inch	mm	Price / Pc.
1/2	15	534
3/4	20	678
1	25	1068
1¼	32	1530
1½	40	1994
2	50	3186

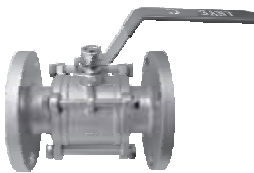


Product : Sant Stainless Steel Ball Valve
 Body Material Cum Standard : SS CF 8 M
 Product Description : Two Piece Design Lever Operated
 Type of Seat : Renewable PTFE Seat
 Type of Ball : CF-8M/SS 316
 Stem : SS 316
 Packing : PTFE
 End Details : Screwed Female BSP Taper Threads
 Port Opening : Full Bore
 Body Test Pressure : 100 kg/cm²g Hyd.
 Seat Test Pressure : 60 kg/cm²g Hyd.

SSBVS (A)

HSN CODE : 84818090

1/4	8	1224
3/8	10	1277
1/2	15	1782
3/4	20	2511
1	25	3488
1¼	32	5632
1½	40	7488
2	50	10462



Product : Sant Stainless Steel Ball Valve (F), SS (304)
 Pressure/Class/Rated : Class-150
 Body Material Cum Standard : S.S. AISI 304 (CF-8)
 Product Description : 3 Pc Design Lever Operated
 Type of Seat : Renewable
 Stem : AISI 410
 Ball : AISI 304 (CF-8)
 Seat Ring & Gland Packing : PTFE
 End Details : Flanges as per B 16.5 Class-150 (Drilled)
 Body Test Pressure : 30 Barg (435psig. Hyd.)
 Seat Test Pressure : 22 barg (320psig. Hyd.)
 Max. Working Temp. : 225°C

SSBVF (A)

HSN CODE : 84818090

1/2	15	3547
3/4	20	4839
1	25	6397
1½	40	10906
2	50	15769
2½	65	24210
3	80	30262
4	100	48144

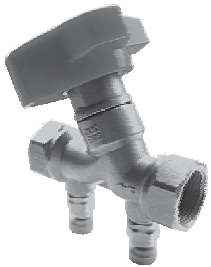


PRV

Product : Sant Brass Pressure Reducing Valve
 Body Material cum standard : Forged Brass IS:6912 Gr FLB
 Product Description : Screwed in bonnet spring loaded
 Fluid : Water, compressed air
 Max. Inlet Pressure P1(bar) : 16 barg
 Outlet Pressure : P2 Range (Bar) 1:6
 Body Test Pressure : 16barg Hyd. (232Psig. Hyd.)

HSN CODE : 84811000

Size/Inch	mm	Price / Pc.
1/2	15	2409
3/4	20	3038
1	25	5273
1¼	32	6610
1½	40	8006
2	50	11106
2½	65	21187
3	80	37825
4	100	65486

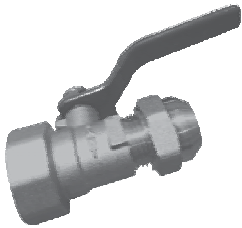


SBBV

Product : Sant Brass Balancing Valve
 Body Material cum standard : Brass
 Product Description : Precise Balancing, Double Regulation Type
 Trim : Copper Alloy
 Stem : Brass IS:6912 Gr FLB
 End Details : Screwed female Threads to BSP Parallel
 Maximum Working Pressure : 1.6 MPa Hyd. (232Psig)
 Body Test Pressure : 2.4 MPa Hyd. (348Psig)
 Maximum Operating Temp. : 150°C

HSN CODE : 84818090

3/4	20	3319
1	25	4176
1¼	32	5478
1½	40	6895
2	50	10078

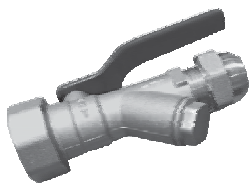


BBVF

Product : Sant Brass Ball Valve with Flare Nut
 Type of Pattern : Two Pcs design with Lever Operated and Flare Nut
 Body & Bonnet : Brass IS:6912 Gr FLB
 Type of Ball : Brass Chrome Plated
 Type of Seats : PTFE Renewable Seats
 Stem : Brass
 Packing : PTFE
 End Details : Screwed end BSP Female Threads and one end
 with Swivel Nut (End connection 5/8")
 Body Test Pressure : 20kg/cm²g (Hyd.)
 Seat Test Pressure : 13.5kg/cm²g (Hyd.)

HSN CODE : 90282000

3/4	20	1709
1	25	1803



BBVSF

Product : Sant Brass Ball Valve with Strainer and Flare Nut
 Type of Pattern : Two Pcs design with Lever Operated and Flare Nut
 Body & Bonnet : Brass IS:6912 Gr FLB
 Type of Ball : Brass Chrome Plated
 Type of Seats : PTFE Renewable Seats
 Stem : Brass
 Packing : PTFE
 End Details : Screwed end BSP Female Threads and one end
 with Swivel Nut (End connection 5/8")
 Body Test Pressure : 20kg/cm²g (Hyd.)
 Seat Test Pressure : 13.5kg/cm²g (Hyd.)

HSN CODE : 90282000

3/4	20	2594
1	25	2666



AV
(A)

Product : Air Vent Valve
 Body Material : Brass
 Pressure Rating : PN 1.6
 Working Temperature : 100°C Max.

HSN CODE : 84818090

1/2	15	938
3/4	20	1042
1	25	1234



Product : Brass Filter Valve (Y-Type Strainer)
 Body Material : Forged Brass IS:6912 Gr FLB
 Body Test Pressure : 2.4 MPa (348Psig.) Hyd.
 Product Description : Screwed in cover
 Material of Filter : Stainless Steel AISI-304
 Working Pressure : 1.6 MPa (232 Psig.) Max.

BF
(A)

HSN CODE : 84818090

Size/Inch	mm	Price / Pc.
1/2	15	661
3/4	20	1113
1	25	1579
1¼	32	2792
1½	40	3923
2	50	6387



Product : Sant Brass Universal Check Valve
 Body Material : Brass IS:6912 Gr FLB
 Type of Seat : Integral
 Type of Disc : Brass with 'O' Ring
 End Details : Screwed ends with BSP Parallel Threads
 Body Test Pressure : 20kg/cm²g (Hyd.)
 Working Pressure : 13.5kg/cm²g (Hyd.)

BUCV
(A)

HSN CODE : 84813000

1/2	15	745
3/4	20	1036
1	25	1507
1¼	32	2314
1½	40	3159
2	50	4467

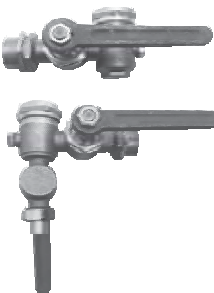


Product : Sant Brass Swing Check Valve
 Body Material : Brass IS:6912 Gr FLB
 Type of Disc : Brass
 End Details : Screwed ends with BSP Parallel Threads
 Body Test Pressure : 20kg/cm²g (Hyd.)
 Working Pressure : 13.5kg/cm²g (Hyd.)

BSCV
(A)

HSN CODE : 84818090

1/2	15	684
3/4	20	957
1	25	1387



Product : Sant Brass Water Level Gauge (Screwed)
 Body Material : Brass IS:6912 Gr FLB
 Pressure Rating : PN 10
 Product Description : Right Hand Type/Left Hand Type
 End Details : Screwed ends with BSP Male Threads
 Body Test Pressure : 300 Psig(Hyd.)
 Working Pressure : 150 Psig (Hyd.)

BWLG
(A)

HSN CODE : 90261020

1/2	15	3427
3/4	20	5722



Product : SANT Flow Switch
 Type : Paddle Type
 Body Material : Forged Brass
 Pressure Rating : PN-10
 Temperature : 0°C to 120°C (Non-freezing condition)
 Switch Type : SPDT Snap Switch

SFS
(A)

HSN CODE : 90329000

1	25	1961



Product : Sant Brass Water Meter
 Product Standard : ISO 4064 Class-B
 Type of Pattern : Dry Dial, Fan Wheel, Multijet, Magnetic drive type
 Product Description : Screwed in cover
 Temperature : Temperature of Water 45°C Max.
 End Details : Screwed female BSP Parallel Hose Union ends
 Maximum Working Pressure : 1.0 MPa
 Body Test Pressure : 1.5MPa Hyd.

HSN CODE : 90282000

WM 1

Flow Rate : 1m³/h=220 U.K. Gallon=1000 litre per hour

Size/Inch	mm	Price / Pc.
1/2	15	3868
3/4	20	5342
1	25	8302
1½	40	17468
2	50	22605



Product : Sant C.I. Woltman Water Meter (Cold Water)
 Product Standard : Conforming to ISO 4064 Class-B
 Type of Pattern : Dry Dial, Removable Mechanism
 Pressure/Class /Rating : Magnetic drive type
 Product Description : Bolted Cover
 Temperature : Temperature of water is not above 45°C
 End Details : Flanges as per DIN 2533 RF(PN-16) Drilled
 Maximum Working Pressure : 1.0 MPa
 Body Test Pressure : 1.5 MPa Hyd.

HSN CODE : 90282000

WM 2

Flow Rate : 1m³/h=220 U.K. Gallon=1000 litre per hour

2	50	18798
2½	65	21078
3	80	21784
4	100	23867
6	150	36611
8	200	46811
10	250	98153
12	300	110240



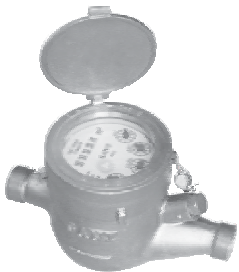
Product : Sant C.I. Woltman Water Meter (Hot Water)
 Product Standard : Conforming to ISO 4064 Class-B
 Product Description : Bolted Cover
 Temperature : Temperature of water is not above 90°C
 End Details : Flanges as per DIN 2533 RF(PN-16) Drilled
 Body Testing Pressure : 1.5 MPa Hyd.
 Maximum Working Pressure : 1.0 MPa

HSN CODE : 90282000

WM 3

Flow Rate : 1m³/h=220 U.K. Gallon=1000 litre per hour

2	50	23416
3	80	27207
4	100	28585
6	150	43054



Product : Sant Brass Water Meter (Hot Water)
 Product Standard : Conforming to ISO 4064 Class-B
 Type of Pattern : Dry Dial, Fan Wheel, Multijet, Magnetic Drive Type
 Product Description : Screwed in Cover
 Temperature : Temperature of water 90°C Max.
 End Details : Screwed Female BSP Parallel Hose Union Ends
 Maximum Working Pressure : 1.0 MPa
 Body Test Pressure : 1.5 MPa Hyd.

HSN CODE : 90282000

WM 4

1/2	15	4440
3/4	20	5548
1	25	8548
1¼	32	11252
1½	40	18823
2	50	24044



Product Description : SANT Ultrasonic Water Meter (S)
 Type of Meter : Ultrasonic Type, Battery Operated
 Pressure Rating : PN16
 End Details : Screwed BSP Parallel Ends
 Output Signal : RS 485 MODBUS with external 24V DC power supply
 Accuracy Class : Class B
 Protection Rating : IP 68

HSN CODE : 90261010

Size/Inch	mm	Price / Pc.
1/2	15	30225
3/4	20	34543
1	25	38861
1¼	32	51814
1½	40	60451

WM-12



Product Description : SANT Ultrasonic Water Meter (F)
 Type of Meter : Ultrasonic Type, Battery Operated
 Pressure Rating : PN16
 End Details : Flanges As per PN-16
 Output Signal : RS 485 MODBUS with external 24V DC power supply
 Accuracy Class : Class B
 Protection Rating : IP 68

HSN CODE : 90261010

2	50	82486
2½	65	85147
3	80	87809
4	100	90469
5	125	109095
6	150	117078
8	200	143360
10	250	191152
12	300	232160

WM-13

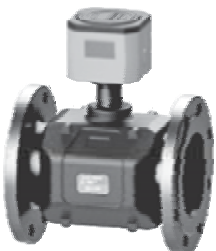


Product Description : SANT Ultrasonic Heat Meter (S)
 Type of Meter : Ultrasonic Type
 Pressure Rating : PN16
 End Details : Screwed BSP Parallel Ends
 Output Signal : RS 485 MODBUS with external 24V DC power supply
 Accuracy Class : Grade 2
 Protection Rating : IP 68

HSN CODE : 90261010

1	25	65338
1¼	32	70128
1½	40	78713

WM-14



Product Description : SANT Ultrasonic Heat Meter (F)
 Type of Meter : Ultrasonic Type
 Pressure Rating : PN16
 End Details : Flanges As per PN-16
 Output Signal : RS 485 MODBUS with external 24V DC power supply
 Accuracy Class : Grade 2
 Protection Rating : IP 68

HSN CODE : 90261010

2	50	125225
2½	65	127330
3	80	128808
4	100	145440
5	125	152417
6	150	158856
8	200	246874
10	250	285514
12	300	327734
14	350	432922

WM-15

TERMS & CONDITIONS

1. Your Orders/Indents will be supplied on rates prevailing at the time of dispatch.
2. All orders placed direct or through Agent are valid only after confirmation from Head Office.
3. Rates are Ex-works, Jalandhar and inclusive of packing charges.
4. Every precaution is being taken while packing the goods which are generally booked at Railway/
5. Transport Risk but in case of any damage, loss or pilferage in transit we are not liable to accept any responsibility. Carriers would be considered as Indentor's Agent after a consignment is handed over by us to the former. Any Claim due to losses in transit or wrong delivery shall be concern between indentor and his carriers.
6. Order once placed and confirmed by us cannot be cancelled without our consent. We reserve the right to execute any order in full or in parts according to our supply position or manufacturing capacity. We accept no liabilities for delayed supplies for reasons beyond our control such as war, lockout breakdown or riots, etc. All commitments entered into by us are subject to above contingencies beyond our control.
7. Each consignment despatched contains Packing Slip. Any Shortage found in package received intact, should be reported to us for verification with in 7 DAYS from the date of taking delivery. Unless otherwise agreed upon all Way Bills or Railway Receipts for goods supplied shall be negotiated through scheduled Bank against payment only or per V.P.P.
New customers are requested to remit 25% of the value of the order as advance.
8. All disputes arising out of an order placed direct or through an Agent will be Subject to
9. Jurisdiction of Law Courts at Jalandhar.
Rates & Terms are subject to alteration without notice.

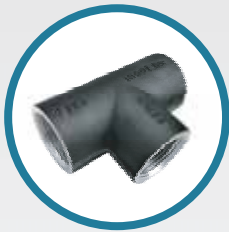
-: NOTE :-

**ALL FLANGED VALVES ARE SUPPLIED UNDRILLED
UNLESS SPECIFIED BY THE INDENTOR**



SANT[®]
VALVES
— SINCE 1953 —

'SANT' Group Products



**MS FORGED
PIPE FITTINGS**



**DI GROOVED FITTINGS
(UL/FM)**



**DI SCREWED FITTINGS
(UL/FM)**



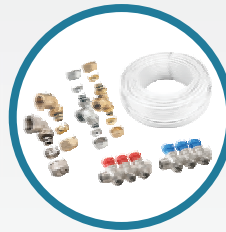
RUBBER BELLOW



UL/FM VALVES



**SPRINKLERS & FLEXIBLE
DROP**



**COMPOSITE PIPES
& FITTINGS**



INLINE FAN

info@santvalves.com
www.santvalves.com

Free replacement of our 'SANT' & 'SBM' products are guaranteed for any manufacturing defect within 18 months from the date of supply or 12 months from the date of installation, whichever is earlier.

Sant Valves Pvt. Ltd.
Jalandhar -144012, Punjab. India