

Medical Imaging

Aesthetic Equipment's

Dentistry Equipment's

ER Equipment's

Laboratory Equipment's



8th Dimension for Medical Equipments

شركة البعد الثامن للأجهزة الطبية

Trusted Distributor for Medical Equipment's Across Saudi Arabia

www.8thdimension-med.com

Tel. +966 11 22 1 7777

Saudi Arabia, Riyadh, King Fahd St., Anoud Tower
المملكة العربية السعودية، الرياض، طريق الملك فهد، برج العنود





شركة البعد الثامن للأجهزة الطبية
8th Dimension for Medical Equipments

Trusted Distributor for Medical Equipment's Across Saudi Arabia

■ Who are we?

8th dimension is a promising company specialized in selling & marketing of medical equipment & hospital furniture across Saudi Arabia in addition to maintenance services.

■ OUR VISION :

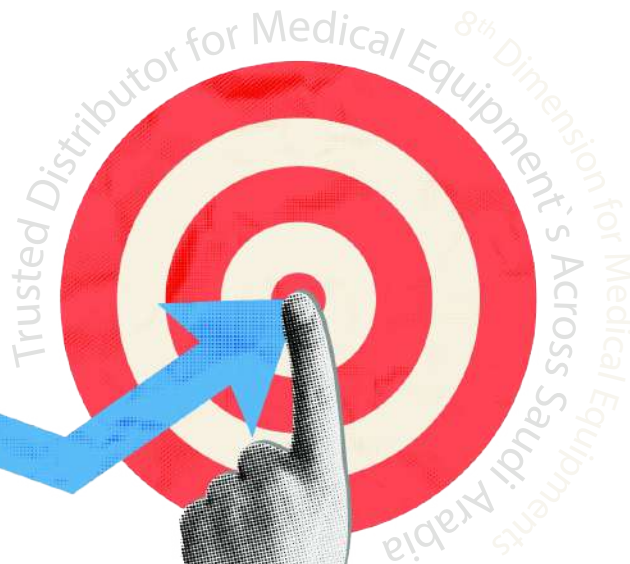
To be a leader distributor in supplying medical equipment's & hospital furniture all over Saudi Arabia.

■ OUR MISSION :

To supply the Saudi medical market with all its needs of high-quality medical equipment's & instruments.

■ OUR CLIENTS :

Elite hospitals, general polyclinics, dental polyclinics, laboratories, radiology centers, Physical therapy centers & aesthetics centers.



Advanced Vital Sign Monitor

Physiological alarm light

According to the different measurement results of the patient's vital signs, the physiological alarm was divided into 3 levels (High / Medium / Low), and the physiological condition of the patient was clearly indicated

Technical alarm light

thermal recorder

Monitor / Spot Check / Triage profile

Three profiles can switch easily, suitable for a variety of clinical needs, increase efficiency and staff satisfaction.

Masimo, Gold Standard SpO2 Solution
Masimo SET® SpO2 outperforms all other pulse oximetry technologies, providing clinicians with unmatched sensitivity and specificity.

Automatic oscillometry NIBP measurement.
The advanced algorithm can remove all kinds of human disturbances and make the measurement result more objective and repeatable.

Rechargeable Lithium battery can work more than 10 hours.

Covidien Filac 3000 Smart Electronic Thermometers
Provide the industry's most accurate and fastest readings in multiple easy-to-use formats

High-sensitivity 8" TFT color touch screen & Easy-to-use interface makes the operation more smoothly.



Resting ECG

Cardio7

Affordable, yet Powerful 12CH Resting ECG as ever

12 Channel Interpretive Resting ECG with



Stress ECG System

CardiPia 800HS

Treadmill (WT300TSM)



Treadmill (WT300TSM)

- Less maintenance and long life cycle
- Silent and smooth movement
- Maximum speed : 20 Km/hour
- Gradient : 25 % (step 0.5 %)
- Patient loading weight : max. 220 Kg
- Running belt : 1460 x 500 mm
- Control : via USB(RS232), Bluetooth
- Emergency stop push button

ECG Module CARDIPIA800H



ECG acquisition module (CARDIPIA800H)

- CARDIPIA800H ECG with Stress ECG I/F
- Cost effective stress ECG system
- Real time ECG display on CARDIPIA ECG
- Easy operate CARDIPIA ECG with color and touch screen

Stress ECG S/W (TRISMED Ergo)
ECG Display and Data Analysis



Stress ECG S/W (TRISMED Ergo)

- Simultaneous 12 Leads acquisition
- Full control of treadmill functions (USB/Bluetooth)
- Automatic arrhythmia detection and ST segment measurements
- Reliable alarm system
- Full control of all the phases of the stress test
- Automatic analysis of test results and delivery of printed reports
- All common exercise protocols included
- Easy creation and edition of custom protocols



DEFIBRILLATOR RESCUE Life



TECHNICAL SPECIFICATIONS

GENERAL REQUIREMENTS

Dimension	• 369 x 240 x 340 mm
Weight	• 5.5 Kg with battery
Electrical	• AC 100-240 VAC, 50/60 Hz- inverter 12V car adapter (optional)
	• Rechargeable 15.0 V – 3.2 Ah Lithium-ion battery
Battery Operation Time	• >5 hours
Battery Charge Time	• Max. 3 hours
Capacity	• 150 shocks at 230J with battery fully charged
Software	• Voice and texts multi language
Memory	• Internal flash 4 Gb up to 300 hrs of ECG data, events and usage review
Review and printing database	• Review and printing of archived events

ENVIRONMENTAL

Temperature	• Operational -5° – 46° C
	• Storage -20° – 50° C
	• Relative humidity 10 – 95%
Isolation	• ECG type CF, Defibrillation type BF
Water proof	• Class IPX4

DEFIBRILLATION

Waveform	• Biphasic Truncated Exponential (BTE)
	• HiCAP technology (Large storage capacitor)
Impedance	• Compensated, range 25 - 200 Ohm
Charge time	• 6 sec for 230 J with battery fully charged

AED MODE

Energy	• Fixed energy at 200 J
Protocol	• ERC 2015 CPR Guidelines with voice and text prompts
Shockable rhythms	• VF with amplitude > 0.15 mV and VT with rhythm > 150 bpm
Sensitivity	• Shockable rhythm-VF > 95%
	• Shockable rhythm-VT > 75%
Specificity	• According to ERC 2010
	• Normal sinusoidal rhythm > 99%
	• Asystole and other non-shockable rhythms > 95%

MANUAL MODE

Energy range	• 1 - 230 J (from 1-10 J in 1 J steps; from 10 to 230 J in 10 J steps)
Commands	• Multifunction trim knob. Charge and shock button directly in the front panel for hands free defibrillation
Paddles	• Reusable adult & pediatric def paddles with charge/shock command
	• Disposable defi pads and internal defi paddles (optional)
Operating mode	• ECG « R » wave synchro or async mode
Indicators	• Battery and main led indicators
	• Clear and visible backlight color buttons

DISPLAY

Type	• High contrast TFT color LCD 7" (800X480 dots)
Information	• Operational information, ECG traces, SpO2 value, NIBP values, parameters, Heart Rate indicator, filters, alarms and battery status
Display mode	• Can select 3, 6, 12 ECG leads

ECG MONITORING

Bandwidth	• 0.5 - 120 Hz (-3 db) with filters off
CMRR	• > 95 db
Input impedance	• > 20 Mohm
Input	• Patient cable 5 leads (I, II, III, aVL, aVF, aVR, V) - standard
	• Patient cable 10 leads (I, II, III, aVL, aVF, aVR, V1...V6) - optional
Gain	• 2.5, 5, 10, 20, 40 mm/mV with patient cable. AUTO with pads
Speed	• 5, 10, 25, 50 mm/sec
Filters	• 550/60 Hz, EMG Filter, base line
Monitoring Mode:	• 0.6 - 40 Hz (-3 db)
bandwidth	
Diagnostic Mode:	• 0.05 - 120 Hz (-3 db)
bandwidth	
HR range	• 20 - 300 bpm (– 2%), digital readout on the display
Alarm	• HR max settable 250 bpm; HR min 20 bpm

SPO2 (OPTIONAL)

SpO2 range	• 0 - 100%
HR range	• 30 - 250 bpm
Accuracy	• 70 - 100% ~ 2% for adults with finger clip sensor
Alarm	• Adjustable min 50%

NIBP (OPTIONAL)

Technique	• Oscillometric
NIBP Accuracy	• Meets ANSI/AAMI 5P10-2002, EN 1060-4
Patient Application	• Adult/Paediatric/Neonatal
Systolic Range	• Adult: 40-260mmHG, Paediatric: 40-160
mmHG, Neonatal	• 40-130 mmHG
Range MAP	• Adult: 26-220 mmHG, Paediatric: 26-133
mmHG, Neonatal	• 26-110 mmHG
Diastolic Range	• Adult: 20-200 mmHG, Paediatric: 20-120
mmHG, Neonatal	• 20-100 mmHG
PR RANGE	• 30-220 BPM
PR Accuracy	• +/-2% or +/-3 bpm
Operating Modes	• Manual, Long Term Automatic, Stat, Service
Auto Interval Periods	• 1, 2, 3, 4, 5, 10, 15, 30, 60 and 90 minutes

PRINTER

Type	• Integrated thermal 3 channels printer for ECG traces and events documentation hardcopy including HR/SpO2/NIBP values
Paper speed	• 5, 10, 25, 50 mm/sec
Paper width	• 58 mm
Operating model	• Manual, automatic (10" pre and post shock recording)

EXTERNAL PACEMAKER (OPTIONAL)

Type	• Rectangular wave
Operating mode	• Fixed on demand
Pulse rate	• 30 ppm to 250 ppm, adjustable in steps of 5 ppm
Impulse duration	• 22.5 ms
Pulse current	• 0 to 150 mA adjustable in steps of 5mA
Amplitude	• Max 150 V

STANDARDS & SAFETY

Standard	• IEC 60601-2-4; IEC 60601-1; IEC 60601-1-2
CE Mark EEC 93/42	• Medical device, Class IIb

Samsung Ultrasound System HS40

HS40's ground-breaking design was inspired by users' ideas and suggestions during development. Every detail, such as the fully articulating monitor arm, the operating panel which can be easily adjusted to different heights, and additional storage space, has been created to make the work environment more comfortable. And it is this focus on the user that has led to the product winning a prestigious 2017 iF Design Award.



Solid State Drive (SSD)

The HS40 uses advanced solid state drives. These stable and dependable drives allow faster boot-up, better frame rates, and fast processing speeds.



BatteryAssist™¹


BatteryAssist™ provides the system with battery power. It enables users to perform scans and transport the ultrasound system to other locations in environments where AC power may not be available temporarily.

HelloMom™¹

HelloMom™ supports simple and secure transfer of fetal ultrasound images and clips wirelessly from the ultrasound system directly to an external device. These images can be shared easily with others.



Samsung Ultrasound System V6



Effective cooling system
An effective airflow system cools down the ultrasound system by constantly letting heat out and reducing fan noise.

Recycled materials
Eco-friendly resin cover is applied to the air vent exterior cover, outlining Samsung's efforts towards a greener tomorrow.

Recycled materials

Samsung healthcare cybersecurity

To address the emerging need for cybersecurity, Samsung provides a solution to support our customers by offering the tools to protect against cyberthreats that may compromise invaluable patient data and ultimately degrade the quality of care.

Learn more

Energy Efficiency

Eco Packaging

Reusable packaging composed of eco-friendly recycled paper. It is Samsung's commitment to achieving carbon-neutral of the earth and environment.

Learn more

Recycled materials

Eco Packaging

Simple transfer of fetal ultrasound images and clips

HelloMom™ 1,5 supports simple and secure transfer of fetal ultrasound images and clips wirelessly from the ultrasound system directly to an external device. These images can be shared easily with others.

Learn more

Energy Efficiency

Scan QR Code

Real-time image sharing solution

SonoSync™ 1,4 is available in PC and smartphone, etc. as a real-time image share solution that allows communication for care guide and training between doctors and sonographers. In addition, voice chatting, text chatting and real-time marking functions are provided for better communication; and the MultiVue function is included that allows monitoring multiple ultrasound images on a single screen.

Learn more

Ultrasound System

PC / Tablet / Smartphone

Ultrasound System CBit6

Value Beyond Imaging **CHISON**



CBitTM 6
Experts with in touch

- Aesthetic Industrial Design, 21.5 inch HD monitor 10.1 inch HD touch screen with super responsive, customized layout.
- intelligent Doppler, intelligent focus, saving time, efficiency and intelligent.
- Dual-Screen Display for better view, Finger-gesture to zoom in and zoom out.
- 210°TV probe to get more detail and information.
- Intelligent software for OB, efficiency and accuracy.
- Powerful features: 4D, Virtual HD, Elastography, curved panoramic.
- Revolutionary after sales solution: Hero Kit.
- Complete cardiac package: Stress Echo, CW, LGC, TDI, Free M mode.




7.5MHz
Linear
D7L40L



2.5MHz
Phased array
D3P64LS



3.5MHz
Convex
D3C60L



12.0MHz
(With FHD) Linear
D12L40L



6.0MHz
Micro-Convex
D6C15L



4.5MHz
Volume
V4C40L



7.5MHz
Transvaginal
D7C10L



3.0MHz
Micro-Convex
D3C20L



2.5MHz
Phased array
D3P64L



6.0MHz
Phased array
DSP64L



9.0MHz
Linear
D10L30L



8.0MHz
Linear
D8L50L



7.5MHz
Trans-Rectal
D7L40L-REC



8.0MHz
Linear
M8L40L

Ultrasound System

CHISON

SonoEye™



IP67

- Ultra-Portable, half weight of a phone
- Ultra-Rapidly, 3s to turn on and quickly response.
- Ultra-Waterproof, sterilize and clean freely.
- Multi Connection, a flexibility connection with smart phone or pad.
- Multi Mode, supply with B, C, PW, M, CPA, DPD, 2B mode.
- Multi Application, Emergency medicine, Critical care, Anaesthesiology, Vascular Access, other POC, Musculoskeletal.

CHISON SonoEye offers a variety of clinical solutions with different Scanner.
Highly personalized design helps to meet your every need.



SonoEye P1

9.0MHz, 30mm,
Peripheral Vessel, MSK,
Small Parts, EM, etc.



SonoEye P2

7.5MHz, 40mm,
Vascular, MSK,
Nerve, Lung,
Small Parts, EM, etc.



SonoEye P3

2.5MHz, Cardiac,
Abdomen, Lung, EM, etc.



SonoEye P5

3.5MHz, Abdomen,
Lung, OB, GYN,
Urology, EM, etc.



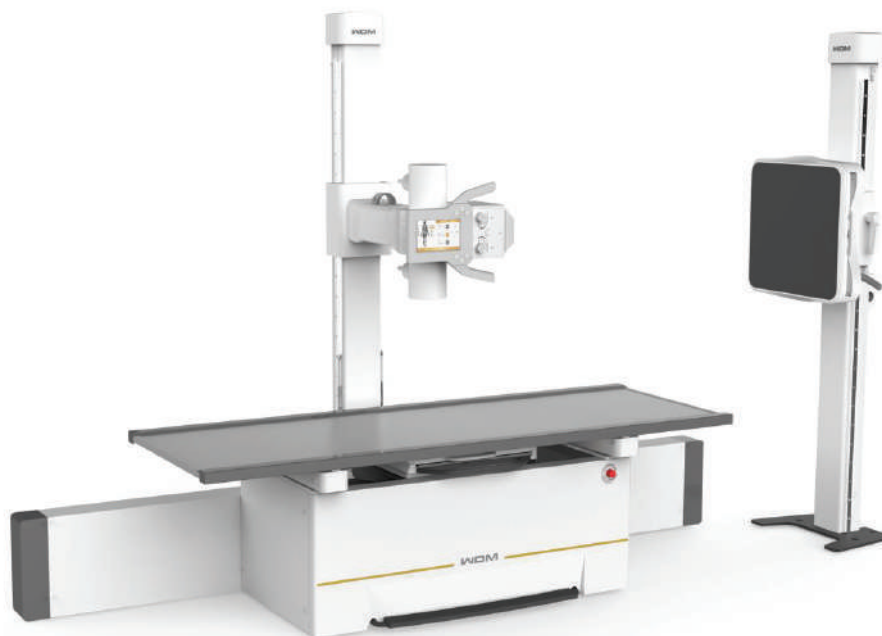
SonoEye P6

6.0MHz, Pediatric
Abdomen, Cardiac, EM,
etc.



Digital X-Ray System

New Oriental 1000NA Digital Radiography System



I. Configurations:

● Standard Configurations:

No.	Component	Part Number	Manufacturer	Quantity
1	High Frequency Generator	GFS802-4	WDM	1
2	DR Flat Panel Detector	WDF 4343RWi	WDM	1
3	X-ray Tube Assembly	LQ16	YUANZHI	1
4	Collimator	XS1-4	WDM	1
5	Radiographic Table	SC3-7	WDM	1
6	Chest Bucky Stand	LS-8	WDM	1
7	High-density Aluminum Grid	JPI	JPI	2
8	HV cable	DL7512-1B	WDM	1
9	Image Acquisition System	Computer	WDM	1
		24" Monochrome LCD monitor		
		WD-ACQUIRE v2.0		
10	Intercom System	F197.FJ.10	WDM	1
11	Console	F821.1A	WDM	1

● Optional Components:

No.	Component	Part Number	Manufacturer	Quantity
1	Ion chamber	Three fields	Claymount or equivalent brand	2

CT Scanner

InsitumCT 338

SINO  **VISION**



The InsitumCT 338 is a high-performance, 24-row, 32-slice whole body CT scanner, which possesses the latest technologies – artifact Intelligence and low-dosage.

To ensure the quality of the InsitumCT 338, an 80 million second reliability test was conducted pre-launch. A 3.5MHU metal tube, 0.6mm slice thickness scanning, 0.7s per rotation scanning time and efficient one-key positioning allowed for a 20% faster scanning speed than conventional scanning. Its unique modular, fine and ultra-clear detector design not only guarantees excellent image quality and long machine life, but also provides rich clinical applications.

X-Ray Detector

Mano4343W



SPECIFICATION

NO.	Specification	Performance
1	Detector Technology	Amorphous Silicon
2	Scintillator	CsI
3	Active Area	427mm x 427mm
4	Number of Pixels	3072 x 3072
6	Pixel Pitch	139 um
7	AD Conversion	16 bit
8	Trigger Mode	AED(Optional) / Software
9	Data Interface	Ethernet / WiFi(802.11ac)
10	Dimension	460mm x 460mm x 15mm (±1mm)
11	Weight	4.3 kg (without battery) 4.6 kg (with battery)
12	Static Loading	150kg Uniformity
13	Battery Capacity	5 hours (Full Performance)
14	Water Proof	IPX1

Product Description and Feature

Mano4343W is a 17x17 cassette size wireless portable flat panel detector designed for Human used digital radiography.

- Fast workflow
- Excellent image quality
- More image details
- Cassette-size flat panel detector

Dental Unit

AA-1



Product Features

- Operating light: 25000Lx strong light illuminance .
- Rotatable glass spittoon .
- Built-out junction box (with water, air and power on/off switch)

Standard equipments:

- Low-mounted instrument tray with air brake (1 set)
- 4 holes handpiece tubing (3 sets)
- Rotatable Ceramic spittoon (1 set)
- 24V noiseless DC motor (1 set)
- Operating light (1 set)
- 24V X-ray film viewer (1 set)

Dental Panorama



4 in 1 Digital X-ray system

Getting ready for the Future of Dentistry

01 CBCT

- Superior image processing
- Super high resolution
- Incomparable Free FOV

02 Panoramic

High-definition image quality

03 Cephalometric

One Shot Ceph and other option

04 Object scan

Digital production of dental appliances in combination with RAYDENT Solution

& Rayguard Protection

Real-time monitoring of your system to ensure optimal functionality

Dental Autoclave



Steam Generator
Patented design, high efficiency and reliable.

Air Switch
Shut down the machine in case of electricity leakage or short circuit

Simplicity
- no screw design on the side walls, elegant and easy to disassemble

Brass Piping
Withstand high temperature and pressure, safe and reliable

Door Handle
Electrical lock+mechanical lock

Safety Valve
Prevent chamber from over pressure

Bacteria Filter
High quality, 2µm precision

Solenoid Valves

**Effective,
Rapid, Dryness,
Safety and Versatility**



12L

Capacity	12L
Chamber Size	φ20x36cm
Display	LCD
Lock	Electrical + Mechanical
Packing Size	73x57x51cm
G.W./N.W.	59/51KG
Power	220V/50HZ 2.4KW
Output	USB + Printer
Printer	thermal/stylus



23L

Capacity	23L
Chamber Size	φ25x45cm
Display	LCD
Lock	Electrical + Mechanical
Packing Size	77x57x51cm
G.W./N.W.	63/55KG
Power	220V/50HZ 2.4KW
Output	USB + Printer
Printer	thermal/stylus



18L

Capacity	18L
Chamber Size	φ25x35cm
Display	LCD
Lock	Electrical + Mechanical
Packing Size	73x57x51cm
G.W./N.W.	61/53KG
Power	220V/50HZ 2.4KW
Output	USB + Printer
Printer	thermal/stylus

Clinical Chemistry Diagnostic Test

Accent Intelligent Multi-Patented Leading-Edge Technology



Uninterrupted Run

Intelligent Probe:

- collision detection
- clog detection*
- liquid level detection
- inventory monitoring
- reagent pre-warming

Cost Savings

- Dedicated Applications Optimized for Maximum Performance
- Reduced Reagents Consumption – Only 100 µl Minimum Reaction Volume
- Longest Reagents On-Board and Calibration Stability (up to 12 Weeks)

Uncompromised Patient Diagnosis

- Closed & Validated Complete Clinical Chemistry Diagnostic System (Analyzer + Reagents + Calibrators + Controls)
- Patented Optical System* – Advanced Concave Grating Light-Splitting Technology*
- Waterfall Probe Cleaning ≤ 0.05% Carry-Over
- Optimized Washing Station ≤ 1 ppm Carry-Over *
- Independent Mixing Bar

Advanced Software

- Intuitive User Friendly Interface
- Intelligent Reflex Function for Conclusive Diagnosis
- Intelligent Self Diagnostics
- Flexible During Run Reagent Loading

*available for Accent MC240 and M320.

NEW ACCENT SERIES ANALYZER

together with **the highest quality dedicated reagent line**, calibrators and controls provide **COMPLETE SOLUTION** suitable for small to mid-size laboratories. Fully automated, bench-top, compact size, small reagent consumption and reliable technology, are basic characteristics of the new generation of ACCENT family.

○ Accent MC240

- 240 T/H Constant & 400 T/H with ISE
- 80 Reusable Cuvettes
- Clog Detection
- Grating System with 12 Wavelengths

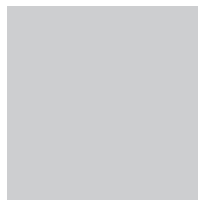
○ Accent M320

- Up to 320 T/H & 540 T/H with ISE
- 80 Reusable Cuvettes
- Clog Detection
- Grating System with 12 Wavelengths

○ Accent S120

- Up to 120 T/H & 400 T/H with ISE
- 40 Disposable Cuvettes
- 8 Wavelengths

Automated ELISA System



Fits Anywhere in the Lab

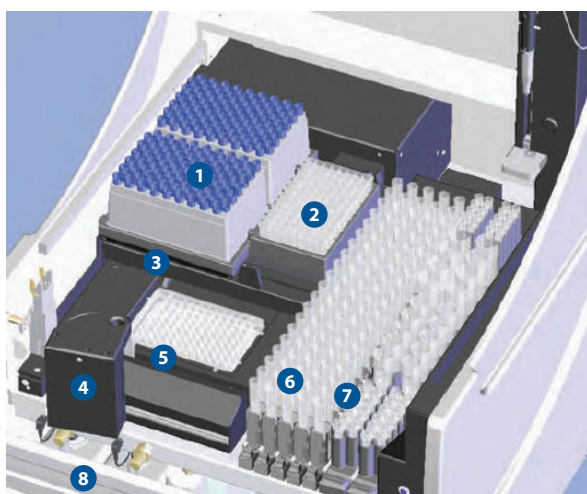
DYNEX DS2 Automated ELISA System is a compact, fully automated open system that delivers automated sample processing, incubation, reagent addition, washing and detection steps for assays as defined by the manufacturer. With DS2 you can run any assay from any vendor and can bring in tests that you are currently sending out with reliability and ease-of-use.

Designed with full walkaway capability, DS2 quickly and easily processes two 96-well microplates and up to 12 different assays simultaneously. The system also features a user-friendly control system, chain of custody management and on-board instrument diagnostics.

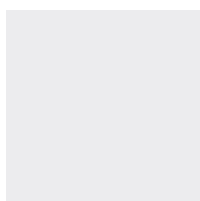
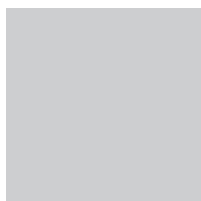
Run Any Assay from Any Vendor

From clinical diagnostics, such as autoimmune and infectious disease to food safety and drugs of abuse testing, DS2 has the comprehensive capability needed to ensure the rigorous, repeatable analysis required to deliver the most accurate results.

DS2 Workspace Area



- 1 2 sample-tip racks (216 tips total)
- 2 12 deep-well dilution strips (96 wells total)
- 3 Embedded reader and 2-plate incubator
- 4 Barcode reader (optional)
- 5 2 independent plate carriers
- 6 5 slide-in sample racks (100 samples total)
- 7 2 slide-in reagent and control racks
- 8 Access panel to buffers, waste bottles and waste-tip container



Auto Glycated Hemoglobin Analyzer High Pressure Ion Exchange Liquid Chromatography(HPLC)



G 21

Auto Glycated Hemoglobin Analyzer High Pressure Ion Exchange Liquid Chromatography(HPLC)

Performance

Method: High Pressure Ion Exchange Liquid Chromatography(HPLC)

Sampling system: Primary tube puncture injection, sample cup hemolysis mode injection.

Throughput: ≤3mins per sample

Sample Volume: 5μL

Sample Tray: 15 samples position,CAL1(QC1)&CAL2(QC2) position,ST

Sample Type: Venous whole blood, peripheral blood

Test Item: HbA1c&β-Thalassemia

Chromatographic column: 4000test/column,calibration report and parameters can be printed after only one calibration.

Sieve plate: 200test/sieve plate,10/set

Report: IFCC&NGSP result

Sample dilution rate:1:300

Hardware

Pump: HPLC pump,The maximum pressure can be 200KG/c square meters (2900psi), with pressure sensing ability, pressure fluctuation ±5%. The analysis column heating module has the ability to control the constant temperature of the analysis column, the temperature control environment range is 5℃-40℃, and the temperature fluctuation is ±0.20℃

Illuminant: LED system,baseline drift 2mv per hour

Sample type: Original tube on the machine, original tube and diluted sample cups can be automatically recognized by the analyzer.

Printer: Thermal printing paper, printing test reports and graphs

USB port: Support LIS system software upgrade online,external barcode scanner optional

Display:10.4 inch LCD colorful touch screen,630mm×360mm×500mm

Software

With online chromatogram sample data saving and query ability

Multi-language operation and reporting software

Monitor instrument parameters real-time

Printing reports including HbA1a, HbA1b, LA1c, HbA1c, HbA0, and reports on abnormal samples.

Warning function for reagent insufficiency and no reagent.

Safety Cabinet

Basic Series Class II A2 Biological Safety Cabinet



Button Screen

Large LCD display is easy to monitor all the safety parameters at a glance; and ergonomically sized control panel improves users interface.



Work Zone

Work zone is made of 304 stainless steel, is surrounded by negative pressure.



Remote Control

All functions can be realized with it, making the operation much easier and convenient.



Waterproof Socket

2 waterproof sockets are located in the side panel, for optimum convenience of using small devices inside the cabinet.



UV Lamp

Emission of 253.7 nanometers for most efficient decontamination.

AQUAPURE : The Ultimate Face & Body Experience

The AQUAPURE is a non-invasive, multifunctional facial care device that treats a variety of skin conditions in patients with diverse skin profiles.

Each AQUAPURE handpiece works to promote skin tightness and rejuvenation with skin-nourishing solutions that deliver immediate results.



Handpieces



AQUAPEEL PEELING

- Removes dead skin cells and other impurities
- Deep cleansing
- AQUAPURE System Cleaning



ELECTROPORATION WHITENING

- Nourishes skin
- Boosts circulation
- Brightens skin



MICRO-CURRENT FACIAL LIFTING

- Tightens skin
- Lifts jowls and eyebrows
- Elastin and collagen regeneration
- Stimulates blood circulation



COOLING / HEATING SKIN RELAXATION

- COOLING**
 - Reduces fine lines and wrinkles
 - Enhances skin repair
- HEATING**
 - Desensitizes skin
 - Firms and tones

Secret^{RF} 2.0

THE SECRET OF MULTI-PLATFORM RF SYSTEM ;

SECRET RF is well systemized for RF based multi-platform system creating individual fractional multiple and single thermo-coagulation technologies in one system. This standout multi-function system enables to increase treatment efficacy and reliability for various dermatologic conditions including anti-aging, acne, scars and thread vein.

INDICATIONS

Face Treatment

Non-surgical Face Lifting
Skin Tightening
Wrinkle Reduction
Pore Reduction

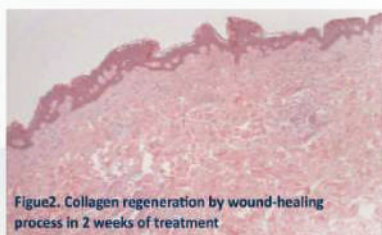
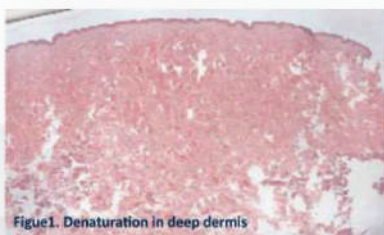
Acne Scars
Scars
Spider Veins

Body Treatment

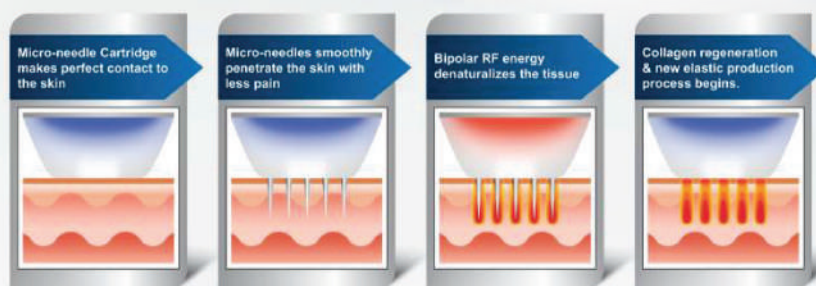
Scars
Stretch Mark

Secret^{RF} | FRACTIONAL RF TECHNOLOGY

Secret RF uses precision 2MHz bi-polar RF and minimally invasive micro-needles in one technology to produce a powerful synergistic effect minimizing damage on the epidermis. Precisely controlled RF energy induces subdermal thermal effect and deep dermal thermal coagulation to selectively adjusted depth from 0.5mm to 3.5mm via patented non-insulated micro-needles. It is capable of greater heating and denaturing, which stimulates fibroblast of both subdermal and dermal layers and remodels the skin effectively. Furthermore, it can treat all skin type, even darker skin with low risk of side effects and PIH.



HOW Secret^{RF} WORKS



Laser Hair Removal



PENTO
9900
PREMIUM LONG-PULSE
DUAL LASER

ilooda



SPECIFICATION

System Type	Alexandrite	Nd:YAG
Wavelength	755nm	1064nm
Pulse Width	250 μ s ~ 300ms	250 μ s ~ 300ms
Max Delivered Energy	60J	80J
Recommended Energy	3ms, 50J@2Hz (at 24mm spot)	3ms, 60J@2Hz (at 24mm spot)
Pulse Rate	0.5, 1, 1.5, 2, 3, 4, 5, 6, 7, 8, 9, 10Hz	
Beam Delivery	Optical Fiber	
Aiming Beam	InGaN, 530nm, below 10mW	
Spot Size	3, 6, 8, 10, 12, 15, 18mm (Option : 5, 20, 22, 24mm)	
Weight	125kg	
Dimension	581 x 855 x 1229mm	
Electrical Requirements	220VAC, 50/60Hz, 4.6KVA	
Cooling System	GCD Type (GAS Cooling Device) Handpiece	

Accessories

Cooling Device (Option) : ACD Type (Air Cooling Device) Handpiece

Cryotherapy MedGyn Cryotherapy System MGC-200™

MedGyn Cryotherapy System is designed by physicians and engineered by cryogenic experts to ensure safety, performance and convenience. The MedGyn Cryotherapy System has superior technology combined with a 3-position single trigger to deliver optimal cryosurgical temperatures. A wide variety of autoclavable tips is available. The equipment works with Nitrous Oxide (N₂O) or with Carbon Dioxide (CO₂) gas and has standard-specific adaptors.

019000 MedGyn Cryotherapy System MGC-200 (tips not included)

- Single-hand control from three-position trigger (freeze, off, defrost)
- Instant defrost
- Wide choice of autoclavable tips
- Valve body designed and manufactured for long, trouble-free life
- Ability to change tip during procedure without shutting off gas flow
- Capture "O" ring design provides complete gas seals where tips attach to probe system
- Built-in regulators control pressure at tip for added safety and gas economy
- Nitrous Oxide (N₂O) and Carbon Dioxide (CO₂) adaptors available



Carrying Case





ENT Workstation

DONG-A CHAMMED XU1 SMART ENT Workstation

Specifications

Power source	220V 50Hz/60Hz
Power consumption	950VA
Compressor motor	2.2Kgf/cm ² ±0.7Kgf/cm ²
Suction motor	680mmHg
Dimension	490mm(W)x587mm(D)x860mm(H)±10%
Weight	74Kg±10%

Color :  Black  Yellow  Cyan



▲ XU1 SMART+Endoscopic system

Standard set		Options
Spray	2	Pen light
Suction	1	Monitor with arm&Base
Rigid endoscope quiver	2	Bottled Irrigator
Mirror quick heater	1	Doctor chair
Medicine bottle	2	Patient chair
Side tray(L/S)	2	Endoscopic system
83mm Can	3	Instrument cabinet
57mm Can	2	
Instrument tray	1	

Bottled Irrigator

Spray / Suction type selectable	head 1 / bottle 2
Warm up time	Approximately 60mins~90mins
Max temp	Approx 43. degree.



▲ XU1 SMART+Endoscopic system+Instrument cabinet



Endoscopic Visual System

SuperVision HD Camera

Key Features :

- More Excellent Quality, Very Reasonable Price, Longer Life Operation
- Compact & Smart Design, High-Definition Images Display, Easy Grip of Hand-piece
- Single, Double, Quadruple Photos Captured and Retrieved on the Monitor
- More Highly Advanced CMOS Camera w/LED



Endoscopic Visual System

MedVision Halogen Lamp

Key Features :

- Remarkably Much Higher Quality, Very Competitive Price, Longer Life Sustainable Operation
- Compact & Smart Design, Outstanding Images Display, Easy Grip of Hand-piece
- Single, Double, Quadruple Photos Captured and Retrieved on the Monitor
- Highly Advanced CCD Camera Halogen Lamp



Hospital Furniture

Famed SU-14

ECONOMIC OPERATING TABLE WITH ELECTRIC HEIGHT CONTROL

The table is designed to support the patient during treatments and surgeries in general surgery, vascular surgery, cardiac surgery, neurosurgery, urology, gynecology, proctology, laryngology, ophthalmology and others. The electrical control with the possibility of programming three predefined table settings helps to make the operation easier and shortens the procedure time. The construction made of high quality carbon steel, coated with polyester-epoxy powder varnish combined with a composite base ensures easy and quick disinfection. The table top segments, which are transparent for X-rays, allow for taking X-rays and monitoring the patient with the C-arm.



UNIVERSAL

The Famed SU-14 operating table provides a comprehensive solution for outpatient surgery or one-day surgery. It is a combination of an operating table with a transport trolley. Stable large diameter wheels allow you to overcome obstacles in the corridors, built-in oxygen tank holder ensures patient safety.



ELECTRIC REGULATIONS

By remote control we can adjust the height of the tabletop, side tilts, Trendelenburg and reverse-Trendelenburg. The control system makes it possible to program three predefined table settings in the bbSafe™ remote control (e.g. tabletop).



HIGH QUALITY

The Famed SU-14 operating table is being created in Poland. The entire production is focused at the factory in Żywiec, giving us a constant opportunity to control the quality of our product. The highest quality steel will protect your table from damage and ensure long-lasting, trouble-free operation. All steel elements are made of high-grade stainless steel using the IntelliProtect™ technology - matte finish with additional zinc protection, surface resistant to disinfectants.



Turnkey Projects





8th Dimension for Medical Equipments
شركة البعد الثامن للأجهزة الطبية



Saudi Arabia, Riyadh, King Fahd St. , Anoud Tower



www.8thdimension-med.com



+966 11 221 7777

Contact Person

DR. OSAMA MOHAMMED

Sales & Marketing Manager



+966 55 300 5459



dr.osama@8thdimension-med.com