

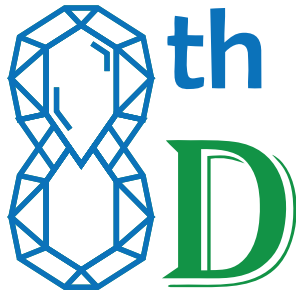
Medical Imaging

Aesthetic Equipment's

Dentistry Equipment's

ER Equipment's

Laboratory Equipment's



8th Dimension for Medical Equipments
شركة البعد الثامن للأجهزة الطبية

www.8thdimension-med.com
Tel. +966 11 22 1 7777

Saudi Arabia, Riyadh, King Fahd St., Anoud Tower
المملكة العربية السعودية، الرياض، طريق الملك فهد، برج العنود



Advanced Vital Sign Monitor

Physiological alarm light

According to the different measurement results of the patient's vital signs, the physiological alarm was divided into 3 levels (High / Medium / Low), and the physiological condition of the patient was clearly indicated

Technical alarm light

Covidien Filac 3000
Smart Electronic
Thermometers
Provide the industry's
most accurate and
fastest readings in
multiple easy-to-use
formats

High-sensitivity
8" TFT color touch
screen & Easy-to-use
interface makes the
operation more
smoothly.

thermal recorder

Monitor / Spot Check / Triage profile

Three profiles can
switch easily, suitable
for a variety of clinical
needs, increase
efficiency and staff
satisfaction.

Masimo, Gold Standard
SpO2 Solution
Masimo SET® SpO2
outperforms all other pulse
oximetry technologies,
providing clinicians with
unmatched sensitivity and
specificity.

Automatic oscillometry
NIBP measurement.
The advanced algorithm
can remove all kinds of
human disturbances and
make the measurement
result more objective and
repeatable.

Rechargeable
Lithium battery
can work more than
10 hours.



Samsung Ultrasound System HS40

HS40's ground-breaking design was inspired by users' ideas and suggestions during development. Every detail, such as the fully articulating monitor arm, the operating panel which can be easily adjusted to different heights, and additional storage space, has been created to make the work environment more comfortable. And it is this focus on the user that has led to the product winning a prestigious 2017 iF Design Award.



Solid State Drive (SSD)

The HS40 uses advanced solid state drives. These stable and dependable drives allow faster boot-up, better frame rates, and fast processing speeds.



BatteryAssist™¹


BatteryAssist™ provides the system with battery power. It enables users to perform scans and transport the ultrasound system to other locations in environments where AC power may not be available temporarily.

HelloMom™¹

HelloMom™ supports simple and secure transfer of fetal ultrasound images and clips wirelessly from the ultrasound system directly to an external device. These images can be shared easily with others.



Samsung Ultrasound System V6



Effective cooling system
An effective airflow system cools down the ultrasound system by constantly letting heat out and reducing fan noise.

Recycled materials
Eco-friendly resin cover is applied to the air vent exterior cover, outlining Samsung's efforts towards a greener tomorrow.

21.5 inch
23.8 inch (Option)

14 inch

SAMSUNG

Recycled materials

Samsung healthcare cybersecurity

To address the emerging need for cybersecurity, Samsung provides a solution to support our customers by offering the tools to protect against cyberthreats that may compromise invaluable patient data and ultimately degrade the quality of care.



Learn more



Eco Packaging

Reusable packaging composed of eco-friendly recycled paper. It is Samsung's commitment to achieving carbon-neutral of the earth and environment.



Learn more



Recycled materials



Eco Packaging

Simple transfer of fetal ultrasound images and clips

HelloMom™ 1,5 supports simple and secure transfer of fetal ultrasound images and clips wirelessly from the ultrasound system directly to an external device. These images can be shared easily with others.



Learn more



Scan QR Code



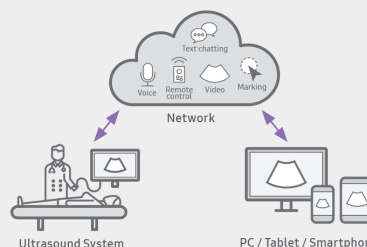
Energy Efficiency

Real-time image sharing solution

SonoSync™ 1,4 is available in PC and smartphone, etc. as a real-time image share solution that allows communication for care guide and training between doctors and sonographers. In addition, voice chatting, text chatting and real-time marking functions are provided for better communication; and the MultiVue function is included that allows monitoring multiple ultrasound images on a single screen.



Learn more



Digital X-Ray System

New Oriental 1000NA Digital Radiography System



I. Configurations:

● Standard Configurations:

No.	Component	Part Number	Manufacturer	Quantity
1	High Frequency Generator	GFS802-4	WDM	1
2	DR Flat Panel Detector	WDF 4343RWi	WDM	1
3	X-ray Tube Assembly	LQ16	YUANZHI	1
4	Collimator	XS1-4	WDM	1
5	Radiographic Table	SC3-7	WDM	1
6	Chest Bucky Stand	LS-8	WDM	1
7	High-density Aluminum Grid	JPI	JPI	2
8	HV cable	DL7512-1B	WDM	1
9	Image Acquisition System	Computer	WDM	1
		24" Monochrome LCD monitor		
		WD-ACQUIRE v2.0		
10	Intercom System	F197.FJ.10	WDM	1
11	Console	F821.1A	WDM	1

● Optional Components:

No.	Component	Part Number	Manufacturer	Quantity
1	Ion chamber	Three fields	Claymount or equivalent brand	2

CT Scanner InsitumCT 338

SINO  VISION



The InsitumCT 338 is a high-performance, 24-row, 32-slice whole body CT scanner, which possesses the latest technologies – artifact Intelligence and low-dosage.

To ensure the quality of the InsitumCT 338, an 80 million second reliability test was conducted pre-launch. A 3.5MHU metal tube, 0.6mm slice thickness scanning, 0.7s per rotation scanning time and efficient one-key positioning allowed for a 20% faster scanning speed than conventional scanning. Its unique modular, fine and ultra-clear detector design not only guarantees excellent image quality and long machine life, but also provides rich clinical applications.

Dental Panorama



4 in 1 Digital X-ray system

Getting ready for the Future of Dentistry

01 CBCT

- Superior image processing
- Super high resolution
- Incomparable Free FOV

02 Panoramic

High-definition image quality

03 Cephalometric

One Shot Ceph and other option

04 Object scan

Digital production of dental appliances in combination with RAYDENT Solution

& Rayguard Protection

Real-time monitoring of your system to ensure optimal functionality

Dental Autoclave



**Effective,
Rapid, Dryness,
Safety and Versatility**



12L	
Capacity	12L
Chamber Size	φ20x36cm
Display	LCD
Lock	Electrical+Mechanical
Packing Size	73x57x51 cm
G.W/N.W	59/51KGS
Power	220V/50HZ 2.4KW
Output	USB+Printer
Printer	thermal/stylus



23L	
Capacity	23L
Chamber Size	φ25x45cm
Display	LCD
Lock	Electrical+Mechanical
Packing Size	77x57x51 cm
G.W/N.W	63/55KGS
Power	220V/50HZ 2.4KW
Output	USB+Printer
Printer	thermal/stylus



18L	
Capacity	18L
Chamber Size	φ25x35cm
Display	LCD
Lock	Electrical+Mechanical
Packing Size	73x57x51 cm
G.W/N.W	61/53KGS
Power	220V/50HZ 2.4KW
Output	USB+Printer
Printer	thermal/stylus

Clinical Chemistry Diagnostic Test



Uninterrupted Run

Intelligent Probe:

- collision detection
- clog detection*
- liquid level detection
- inventory monitoring
- reagent pre-warming

Accent Intelligent Multi-Patented Leading-Edge Technology



Cost Savings

- Dedicated Applications Optimized for Maximum Performance
- Reduced Reagents Consumption – Only 100 µl Minimum Reaction Volume
- Longest Reagents On-Board and Calibration Stability (up to 12 Weeks)





Uncompromised Patient Diagnosis

- Closed & Validated Complete Clinical Chemistry Diagnostic System (Analyzer + Reagents + Calibrators + Controls)
- Patented Optical System* – Advanced Concave Grating Light-Splitting Technology*
- Waterfall Probe Cleaning ≤ 0.05% Carry-Over
- Optimized Washing Station ≤ 1 ppm Carry-Over *
- Independent Mixing Bar



Advanced Software

- Intuitive User Friendly Interface
- Intelligent Reflex Function for Conclusive Diagnosis
- Intelligent Self Diagnostics
- Flexible During Run Reagent Loading

*available for Accent MC240 and M320

NEW ACCENT SERIES ANALYZER

together with **the highest quality dedicated reagent line**, calibrators and controls provide **COMPLETE SOLUTION** suitable for small to mid-size laboratories. Fully automated, bench-top, compact size, small reagent consumption and reliable technology, are basic characteristics of the new generation of ACCENT family.

○ Accent MC240

- 240 T/H Constant & 400 T/H with ISE
- 80 Reusable Cuvettes
- Clog Detection
- Grating System with 12 Wavelengths

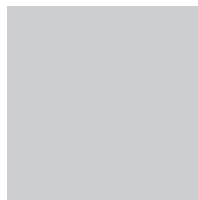
○ Accent M320

- Up to 320 T/H & 540 T/H with ISE
- 80 Reusable Cuvettes
- Clog Detection
- Grating System with 12 Wavelengths

○ Accent S120

- Up to 120 T/H & 400 T/H with ISE
- 40 Disposable Cuvettes
- 8 Wavelengths

Automated ELISA System



Fits Anywhere in the Lab

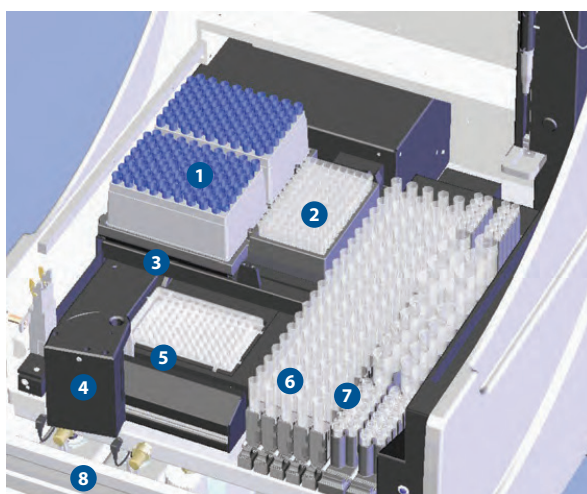
DYNEX DS2 Automated ELISA System is a compact, fully automated open system that delivers automated sample processing, incubation, reagent addition, washing and detection steps for assays as defined by the manufacturer. With DS2 you can run any assay from any vendor and can bring in tests that you are currently sending out with reliability and ease-of-use.

Designed with full walkaway capability, DS2 quickly and easily processes two 96-well microplates and up to 12 different assays simultaneously. The system also features a user-friendly control system, chain of custody management and on-board instrument diagnostics.

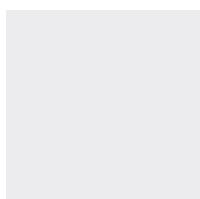
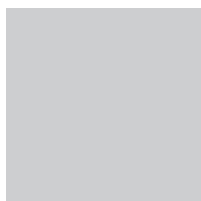
Run Any Assay from Any Vendor

From clinical diagnostics, such as autoimmune and infectious disease to food safety and drugs of abuse testing, DS2 has the comprehensive capability needed to ensure the rigorous, repeatable analysis required to deliver the most accurate results.

DS2 Workspace Area



- 1 2 sample-tip racks (216 tips total)
- 2 12 deep-well dilution strips (96 wells total)
- 3 Embedded reader and 2-plate incubator
- 4 Barcode reader (optional)
- 5 2 independent plate carriers
- 6 5 slide-in sample racks (100 samples total)
- 7 2 slide-in reagent and control racks
- 8 Access panel to buffers, waste bottles and waste-tip container





AQUAPURE : The Ultimate Face & Body Experience

The AQUAPURE is a non-invasive, multifunctional facial care device that treats a variety of skin conditions in patients with diverse skin profiles.

Each AQUAPURE handpiece works to promote skin tightness and rejuvenation with skin-nourishing solutions that deliver immediate results.



Handpieces



AQUAPEEL PEELING

- Removes dead skin cells and other impurities
- Deep cleansing
- AQUAPURE System Cleaning



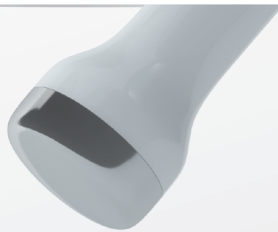
ELECTROPORATION WHITENING

- Nourishes skin
- Boosts circulation
- Brightens skin



MICRO-CURRENT FACIAL LIFTING

- Tightens skin
- Lifts jowls and eyebrows
- Elastin and collagen regeneration
- Stimulates blood circulation



COOLING / HEATING SKIN RELAXATION

- COOLING**
 - Reduces fine lines and wrinkles
 - Enhances skin repair
- HEATING**
 - Desensitizes skin
 - Firms and tones

Secret^{RF} 2.0

THE SECRET OF MULTI-PLATFORM RF SYSTEM ;

SECRET RF is well systemized for RF based multi-platform system creating individual fractional multiple and single thermo-coagulation technologies in one system. This standout multi-function system enables to increase treatment efficacy and reliability for various dermatologic conditions including anti-aging, acne, scars and thread vein.

INDICATIONS

Face Treatment

Non-surgical Face Lifting
Skin Tightening
Wrinkle Reduction
Pore Reduction

Acne Scars
Scars
Spider Veins

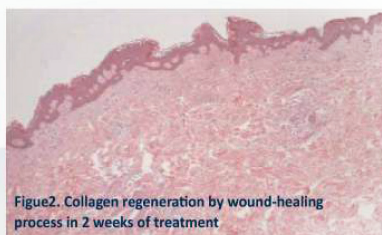
Body Treatment

Scars
Stretch Mark

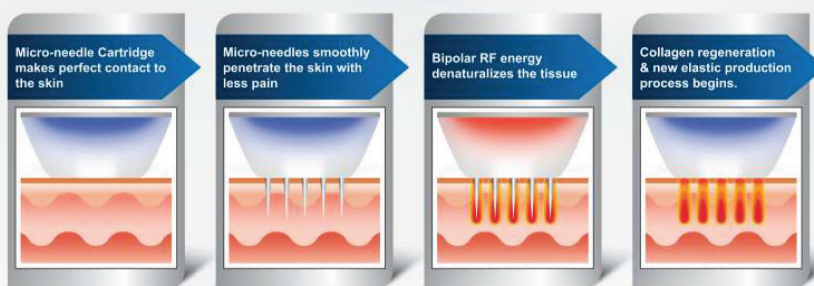
Secret^{RF}

FRACTIONAL RF TECHNOLOGY

Secret RF uses precision 2MHz bi-polar RF and minimally invasive micro-needles in one technology to produce a powerful synergistic effect minimizing damage on the epidermis. Precisely controlled RF energy induces subdermal thermal effect and deep dermal thermal coagulation to selectively adjusted depth from 0.5mm to 3.5mm via patented non-insulated micro-needles. It is capable of greater heating and denaturing, which stimulates fibroblast of both subdermal and dermal layers and remodels the skin effectively. Furthermore, it can treat all skin type, even darker skin with low risk of side effects and PIH.



HOW Secret^{RF} WORKS



DONG-A CHAMMED

XU1 SMART ENT Workstation

Specifications

Power source	220V 50Hz/60Hz
Power consumption	950VA
Compressor motor	2.2Kgf/cm ² ±0.7Kgf/cm ²
Suction motor	680mmHg
Dimension	490mm(W)x587mm(D)x860mm(H)±10%
Weight	74Kg±10%

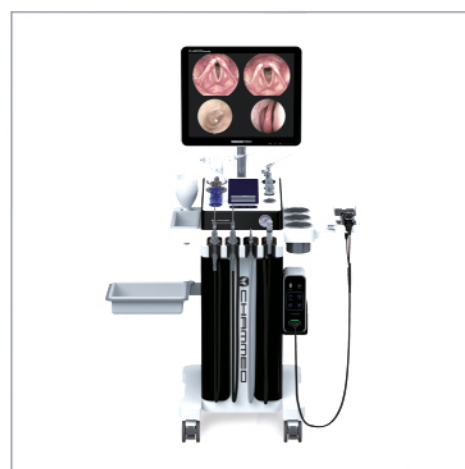
Color : Black Yellow Cyan

Standard set

Standard set		Options
Spray	2	Pen light
Suction	1	Monitor with arm&Base
Rigid endoscope quiver	2	Bottled Irrigator
Mirror quick heater	1	Doctor chair
Medicine bottle	2	Patient chair
Side tray(L/S)	2	Endoscopic system
83mm Can	3	Instrument cabinet
57mm Can	2	
Instrument tray	1	

Bottled Irrigator

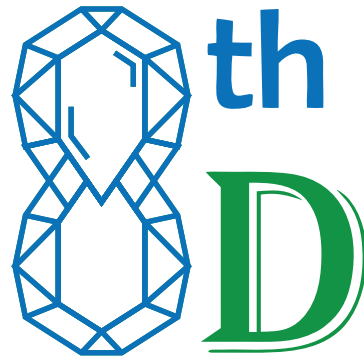
Spray / Suction type selectable	head 1 / bottle 2
Warm up time	Approximately 60mins~90mins
Max temp	Approx 43. degree.



▲ XU1 SMART+Endoscopic system



▲ XU1 SMART+Endoscopic system+Instrument cabinet



8th Dimension for Medical Equipments

شركة البعد الثامن للأجهزة الطبية



Saudi Arabia, Riyadh, King Fahd St. , Anoud Tower



www.8thdimension-med.com



+966 11 221 7777

Contact Person

DR. OSAMA MOHAMMED

Sales & Marketing Manager



+966 55 300 5459



dr.osama@8thdimension-med.com