

FEBRUARY 2026

Bathford Bulletin

BATHFORD

SHOCKERWICK

WARLEIGH

BEFA CELEBRATES
20 YEARS IN 2026
page 7



NEW YEAR'S DAY
RUNNERS
THE BATHFORD FUN RUN page 8

CREATIVE WRITING
CHALLENGE
page 17



GRANNY'S RECIPES
page 21



camella

SALES

camella

LETTINGS

because every chapter deserves
the right home

camella.co.uk

THE EDITORIAL TEAM

Hillary Carr – Editor & Advertising

Maureen Breeze – Editor

Kath Shayler – Creative

Adrian Raybould – Editorial

Catherine Tait – Editorial

Claire Woodhouse – Editorial

We welcome all articles, images and notifications of births, deaths and marriages. Please email for contributors' guidelines: bathfordbulletin@gmail.com

THE BATHFORD BULLETIN NEEDS YOU!!

Fancy having a go at writing articles for the Bulletin? Interested in joining the Editorial Team? Can you use **InDesign** and have some spare time to help with the design and artwork? You would be most welcome! Email bathfordbulletin@gmail.com if you are interested or would like to know more.

MARCH ISSUE COPY DEADLINE

Contributions and advertisements are welcome, up to but **no later than 13 February** via: bathfordbulletin@gmail.com

The Bathford Bulletin is produced and delivered free to all homes in the Parish, 10 months a year on an entirely voluntary basis.

PRINTED BY

Corsham Print on paper from sustainable resources, using bio-degradable inks and low energy production.

www.corshamprint.co.uk

COVER PHOTOGRAPH:

by Tom Blathwayt



WELCOME

to our February edition

The Bulletin team has been hard at work since early January, and we're delighted to bring you another bumper issue. Thanks to all our contributors, who keep the publication lively and relevant.

Even in these coldest and darkest months, there is plenty happening across our Parish.

The Bathford Players, celebrating an impressive 60 years, have been following the Yellow Brick Road as they rehearse for their forthcoming panto, **The Wizard of Oz**. Hillary Carr spoke to some of the young cast to hear what they enjoy most – [see the centre pages](#).



The Village Shop also marks a milestone this year: **20 years** of successful trading. Plans to celebrate are underway – [see page 7](#).

Shrove Tuesday is just around the corner, so drop in to the Village Shop for **crêpes**, pancakes with a French twist, freshly cooked by the **Twinning Association**. They are also preparing for a group visit from Artannes later this year – [see page 20](#) and sign up to their newsletter.

The monthly **Music on a Sunday Afternoon** concerts at St Swithun's continue in February and have proved remarkably successful since they began last year – [see page 13](#) to find out how.

We also have the results of the **Festive Front Door competition (page 5)** and the **Children's Creative Writing Challenge**. Lillian was judged as the Most Promising Writer. You can read her story on [page 17](#).

Hillary Carr shares a charming tale about his grandmother's Yorkshire Pudding recipe on [page 21](#). If you feel inspired, we'd love to hear your own family recipes.

With clubs and societies back in full swing, you can catch up on everything happening this month and summarised in the What's On section on [page 27](#).

We're lucky to live in such a dynamic, vibrant community – and with so much going on, there's every reason to get involved!

Editorial Team



Avalon Therapies

Welcome to Avalon Therapy Practice
in Bathford

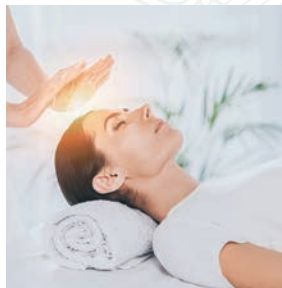
Specialising in Hypnotherapy, EFT
Swedish Massage, Reflexology and Reiki

"Jane is the best therapist I've found for massage, reflexology and other alternative therapies. It's incredibly relaxing and helps that she's a lovely person too. Highly recommended."

Penny L, Dec 2025

"So happy to have found Jane. I had EFT and Reflexology with her as I was preparing for big work project. Jane tailored the treatment towards my needs. I left feeling grounded, prepared and armed with a lot of tools to take forward. Would definitely recommend her."

Bill G, Jan 2026



www.avalonhypnotherapy.co.uk

Contact: Jane Purewall | Info@avalonhypnotherapy.co.uk
07545 458414 | 8 Westwoods, Box Road, Bathford BA1 7QE

February 2026 here we come – lighter evenings hooray!

SATURDAY NIGHT MEANS LIVE MUSIC

20:30 TO 23:30 – £5 entry fee

SAT 14 FEB | VALENTINE'S PARTY

with Samantha Nolan – an excellent female singer who is a firm favourite at the club – we know we are in for a lovely evening of songs from across the decades sung live.

SAT 28 FEB | TO BE ANNOUNCED

FRI 6 FEB AT 19:30 | BINGO

Growing and growing in popularity – come early to secure your seat – always such a fun evening with lots and lots of winners – the more who play the larger the prize pot. A book of 4 games and 2 flyers costs £5 and gives you 12 chances of winning – 6 lines and 6 houses.

FRI 27 FEB AT 20:00 | JAZZFORD

Always such a lovely evening of live music from our house band and jammers – ideal for those wanting to start to participate or for those that have been playing for years – singers are also welcome – come along and enjoy playing in a relaxed and welcoming environment.

FRI 20 FEB FROM 17:00 (until sold out!) RAYA'S THAI STREET FOOD POP-UP TAKEAWAY

If you haven't tried this yet, you don't know what you are missing – hugely popular high-end Thai cuisine.

6 NATIONS RUGBY UNION TOURNAMENT

Please keep an eye on our Facebook page for details of what game we will be showing and when.

THE VILLAGE
CLUB
Bathford



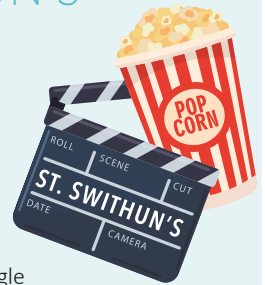
ST SWITHUN'S FILM CLUB

Mon 23 Feb at 14:00
in St Swithun's Church

Join us for a screening of **GIFTED** (with subtitles) starring Chris Evans and McKenna Grace. Frank Adler (Chris Evans) is a single man dedicated to raising his spirited young niece Mary, (McKenna Grace) a child prodigy. But Frank and Mary's happy life is threatened when Mary's mathematical abilities come to the attention of her overbearing grandmother (Lindsay Duncan) – who has other plans for the girl.

Stay after the film for complimentary tea and cake (suggested donation: £3).

Enquiries: keithmilner5@yahoo.co.uk



FESTIVE FRONT DOOR COMPETITION

Thanks to all that entered our Festive Front Door competition. We were very impressed with your efforts.

Winners will receive vouchers to spend in the Village Shop. Awards are as follows:

Most effort: £20 voucher
Julie Collins of Mountain Wood

Most aesthetic: £10 voucher
Sharon Perry of Ostlings Lane

Most creative: £10 voucher
Wendy Freebourn of Mountain Wood

Bingo

Image by Freepik



PILATES
REFORMER
BARRE
YOGA



PRECISION
PILATES STUDIO

precisionpilatesstudio.co.uk

L P Property Developments



Property maintenance, renovation
and improvement

Over 20 years experience of all
aspects of property maintenance,
renovation and improvements

Period property specialist

Andy Perkins

07840 145029 01225 743319
www.lawrence-perkins.co.uk



QUIZ NIGHT

...and
Raffle

Friday, 27th February 2026
6.45-10.15pm in the Village Hall
Doors and **cash** bar open at 6.45pm
Quiz starts at 7.15pm

Tickets must be bought in advance

On sale at Bathford Village Shop from 28th January 2026
£13.00 per person to include our popular chilli supper

Make up a table of 6. Buy 6 tickets at once to
secure a complete table (£78)

We look forward to seeing you there!
Please bring CASH for the bar and raffle

THE BATHFORD VILLAGE SHOP & CAFÉ IS 20 YEARS OLD THIS YEAR!!



This is a fantastic achievement – 80% of cooperatives fold within the first 2 years, so we are thrilled to reach this milestone, and we will be celebrating throughout the year with a number of events in and around the Shop.



We will also be looking forward to the next 20 years; as a community cooperative, we operate with a **volunteer committee**, and a brilliant team of mainly volunteers staffing the Shop & Café, plus all you wonderful customers. We've been so well supported for the last 20 years – let's make sure that support continues for the next 20 – **we can't do it without you all continuing to volunteer and shop.**

*Registering BEFA as a Legal Entity in Dec 2005.
Presentation of Registered Office plaque. You may spot: Maureen Breeze, Jill Gigg, Helen Lees, Diana Smith and Peter McCowan*

February is shaping up to be a fabulous month at the **Village Shop & Café**, with plenty to look forward to as we head into our very special year.

SHROVE TUESDAY WITH A TWIST

By popular demand, **Shrove Tuesday with a twist**, organised by the **Twinning Association**, returns on **Tue 17 Feb between 15:00 and 17:00**. Join us in the café to enjoy delicious crêpes and a touch of French flair as we celebrate this much-loved tradition together.

Thank you, as always, for your continued support. We look forward to welcoming you into the Shop & Café this February.

BEFA FUND-RAISING QUIZ NIGHT AND SUPPER

Our ever-popular **BEFA fund-raising Quiz Night and Supper** will be on **Fri 27 Feb**, promising another fun and friendly evening filled with questions, laughter and community spirit. See the poster on the left for information and keep an eye on the shop noticeboard for further details. Be sure to grab your tickets and get your team ready.

FABULOUS FEBRUARY DRAW

Don't forget to take part in our popular **Fabulous February Draw** every time you come in – a great way to support your community Shop while also being in with a chance to win some great prizes. **Details in the Shop.**

BEFA BIG BIRTHDAY BASH

Another date for your diary – the **BEFA Big Birthday Bash** will be on **Sat 16 May**. We'll be sharing details of all our anniversary events and celebrations throughout the year, so watch this space. – **we can't wait to celebrate with you all.**





NEW YEAR'S DAY RUNNERS

THE BATHFORD FUN RUN

The Fun Run crowd gathers

The New Year brought a new community event to the village. On 1 January, almost 100 people, aged from 5 to 70, took on the cold to kickstart 2026 with a 5 km run through Bathford's finest mud, streams and fields.

A big thanks to our marshals, Bathford Parish Council for the use of the recreation ground and Avonvale RFC for opening the bar. A very special thank you to **Rossie's Full of Beans Coffee Trike** for providing the caffeine needed to get people going, and for generously donating all takings. Together we raised over **£1,000** for **Friends of Bathford School** charity.

A great way to start 2026! Watch this space for details of the Unfun Run in May...

Tom Blathwayt



*A family on the run
– in the best possible way!*

Concert at Bath Abbey 24.02.2026 7:30PM to 9:30PM
with an interval

UNITED 4 PEACE

A WOMAN'S WAR

STRING NONET
BY ILLIA BONDARENKO

BY NATALIA STOROVIA AND KORNELIA NEMALOVA

Organized by THE FRIENDS OF UKRAINE Supported by Bath Abbey

FRIENDS OF OLEKSANDRIYA UNITED 4 PEACE Tue 24 Feb at Bath Abbey

Join us for a special evening of reflection, resilience and hope, in support of humanitarian aid for the Ukrainian city of Oleksandriya to mark the 4th Anniversary of the Invasion of Ukraine.

Programme highlights include:

- String nonet from London led by Illia Bondarenko
- Argyle String Orchestra (Bath)
- Vocal trio The Ruffians
- The Courage Choir



Interval refreshments: wine and honey cakes.

The evening will conclude with an auction of a canvas depicting the Banksy mural left on a destroyed building in Borodianka, Ukraine.

All funds raised will directly support vital humanitarian aid in Oleksandriya, Bath's partner city.

Zhenya Shkil

Tickets: www.bathboxoffice.org.uk | More information: www.friendsofo.co.uk



ASK THE TRAINER

Your questions answered
by Ali Creighton at
Doodle Dogs Training

Q. Can you recommend any really strong toys that my puppy won't destroy?

A. This is a very common question! Puppies explore the world with their mouths, and their sharp little teeth can make short work of many toys. Chewing is completely normal and happens for lots of reasons — play, comfort, boredom and teething — so having suitable toys is essential. Different breeds also play in different ways: some love to chase, others to retrieve, and some (especially terriers!) enjoy shaking and 'killing' their toys. Chewing itself is a calming activity, so it's something to encourage, as long as the items are safe.

In early training, 'sacrificial' toys can be useful because they give your puppy something appropriate to chew instead of your hands or furniture. Choosing the right type of toy makes a big difference. Longer-lasting options include artificial Nylabones, non-splintering coffee wood, and age-appropriate edible chews. Cardboard boxes can also be great for supervised 'destruction' sessions. **Avoid very hard items such as antlers**, as these can damage developing teeth.

Some soft toy brands are tougher than others. 'Tuffy' toys, which come with a Destructibility Scale, can be a good choice, and many puppies enjoy rope toys from brands like 'Kong'. Just remember that most toys are designed for interactive play rather than constant chewing, so put them away between sessions.

Finally, remember there is a choking risk in leaving anything for your puppy to eat or chew when you are not around to supervise.

www.doodledogs.uk



EPIPHANY

Don't for a moment think that I don't love Christmas.

It is a moment when so much of what is Jewish, Hindu and Christian tradition, and much that is pagan, come together to celebrate the coldest, darkest days of the year with their festivals of birth, rebirth, light and survival. Our cities are lit up with sumptuous decorations. Shop fronts glow. Stars and angels, holly and pine cones surround Father Christmas and his reindeer in cotton wool snow or scenes of the Nativity. Carols and Pantomime reverberate. Christmas has a smell all of its own and not just from mince pies and mulled wine.

And suddenly it's Epiphany, the day it all ends. Christmas cards are stacked for reuse as shopping lists. Coloured lights that twinkled and shone are packed away. The trees and shelves are cleared of angels and baubles, tinsel and glitter and all go into storage for eleven months. Dull normality reigns. I can Hoover the whole house unobstructed and without tripping over stray cables. Bliss...

Judy Marris



EXPERIENCED
PERSONAL TRAINERS
SPECIALISING
IN FITNESS

**FOR THE
OVER 60's**



PETTEMERIDES PERSONAL TRAINING

MOVE BETTER, FEEL BETTER ...



EXPERTISE IN EXERCISE PRESCRIPTION FOR THOSE WITH:

Medical Conditions | Neurological Conditions | Lower Back Pain
Hip and Knee Replacements (Pre & Post Op)

Personal Training

Supervised Gym Sessions

Sports Massage

Osteopathy

Physiotherapy

239 LONDON ROAD EAST, BATHEASTON, BATH, BA1 7RL
t.07779572761 e.hpettemerides@gmail.com





NEWS FROM SHOCKERWICK HOUSE

From all at Shockerwick House, we send you our best wishes for 2026.

With a new year comes new adventures, and we are asking the community if there are any hidden talents among you; from singing to playing musical instruments or even magic tricks and history talks?! We would love you to come and share. **We are especially**

seeking someone who could spare a little time once a fortnight, to help us create a small singing group. Please contact laura.bright@bupa.com or call **01225 743636 ext 1200** to speak to **Brionne**, our activities coordinator.

We of course invite everyone to come to our monthly coffee morning on **Thu 19 Feb from 10:30-12:00** – and keep an eye on our Facebook page for upcoming events.

Laura Bright



Sunrise at Shockerwick House



SING YOUR HEART OUT!!

A new term, a time for new voices – male and female – come and join Bathford Village Choir – especially if you are a man!

We are a friendly community choir, who rehearse on **Thursday evenings 20:00 -21:30** in Bathford Parish Hall, under the expert direction of our leader **Kate Robey**.

We perform several concerts a year, including at **Shockerwick House Nursing Home**, exploring and enjoying a range of music.

**Termly fees, currently based on £5 per session.
No experience needed, no auditions, just enthusiasm — all welcome!
Contact Pam Priston on 01225 743499 for more information**

Here is what some of our members have said about us:

“A weekly dose of joy and harmony.”

“Even if my day has been taxing, coming together in the companionship of the group and singing for fun, boosts my mood, restores my energy and is super-good for health and well-being.”

“I feel like I have had a gin and tonic before I've got home to pour one!”

TAILORED HOME
INSURANCE
RIGHT DOWN
TO THE
FINEST DETAIL

To find out more, contact
01761 239382
Bath@nfumutual.co.uk



NFU Mutual
BESPOKE INSURANCE



Loose covers and curtains

Individually made
to suit your
requirements

I also undertake
alterations and renovations

Sue Hocking

01225 865706

07748 780985

Email:

sue.hocking@talktalk.net

Miller Kehoe

PAINTING & DECORATING

We are an experienced, family run decorating team providing professional and high quality painting and decorating services in Bath and the surrounding areas.

We carry out interior and exterior works to residential and commercial properties. No job too big or small.

Get in touch today for a free no obligation quote.

Contact Sean on 07377381612

Email sean@millerkehoedecorating.com

Based in Bathford

FROM ST. SWITHUN'S

Dear Friends,

Oh my goodness - Lent is nearly upon us! Early Easter this year means that Ash Wednesday is 18 February – we will mark this across the benefice with a morning service at 10:00 at St John's, Batheaston and an evening service at 19:30 at St Swithun's.

Lent is a great time to **'live more simply so others can simply live'**

– please come and enjoy a soup lunch each Wednesday lunchtime, with your donations to a different charity each week. Before the soup, there will also be a chance to hear about someone's life. This is on the back of my **20th anniversary service last October** when, by popular demand, I outlined the different chapters of my life and faith journey – now it's the turn of other people! The lunches will alternate between **St Swithun's** and **St John's** (see below) beginning at **11:45**. Please be prompt so speakers are not interrupted.

- **25 February St Swithun's**
- **4 March St John's**
- **11 March St Swithun's**
- **18 March Rhymes Pavillion, Batheaston**
- **25 March St Swithun's**

Do contact me on revlauretta@outlook.com with any queries.

With grateful thanks for our life together here,
Lauretta



Rev Lauretta | revlauretta@outlook.com
Curate Jane Hoe | jane.hoe@outlook.com
Church Office | Becky Bull 01225 920050
administrator@stswithunsbathford.co.uk

Music on a Sunday Afternoon Fund Raising Concerts

February's concert is the **fifth of this series and the tenth since we began**. Over the past 16 months to date, these events have raised more than **£7000**, supported **12 charitable causes** and brought together over **120 musicians**, all who have generously and freely given their time.

As well as raising funds, the series celebrates **community music making**, offering valuable performance opportunities for amateur musicians, and welcoming the wider community to St Swithun's for an enjoyable Sunday afternoon.

A heartfelt thank-you to everyone involved and to all who have donated so generously.

Do save the date for our final concert on **22 March**, featuring the **Cwm Bath Male Voice Choir** and the **Bathford Jazz Group**. We look forward to seeing you there.

St Swithun's Church, Bathford



15 Feb 2026
Concert at 15:00
followed by
refreshments

Retiring collection
principally in aid of
Tearfund—which tackles
poverty and disasters
worldwide, through local
church partnerships

Kate Robey, Piano and Cello

Kate returns to entertain us again with some Gershwin on the piano and Bach on the cello.

Passion Flutes

A flute choir of 10 adult players—open to all ages and abilities. With alto, piccolo and C flutes, they will entertain with a range of popular music led by Gemma Tucker.

Claer Turner, Piano

Claer is a classical pianist and teacher and will be performing pieces by Beethoven, Chopin, Ravel and Gershwin.

St Swithun's Charity Action

IT'S A WIZZ OF

As rehearsals were in full swing, Hillary Carr took time out to find out how the panto was coming together and chatted to some of the younger cast members.

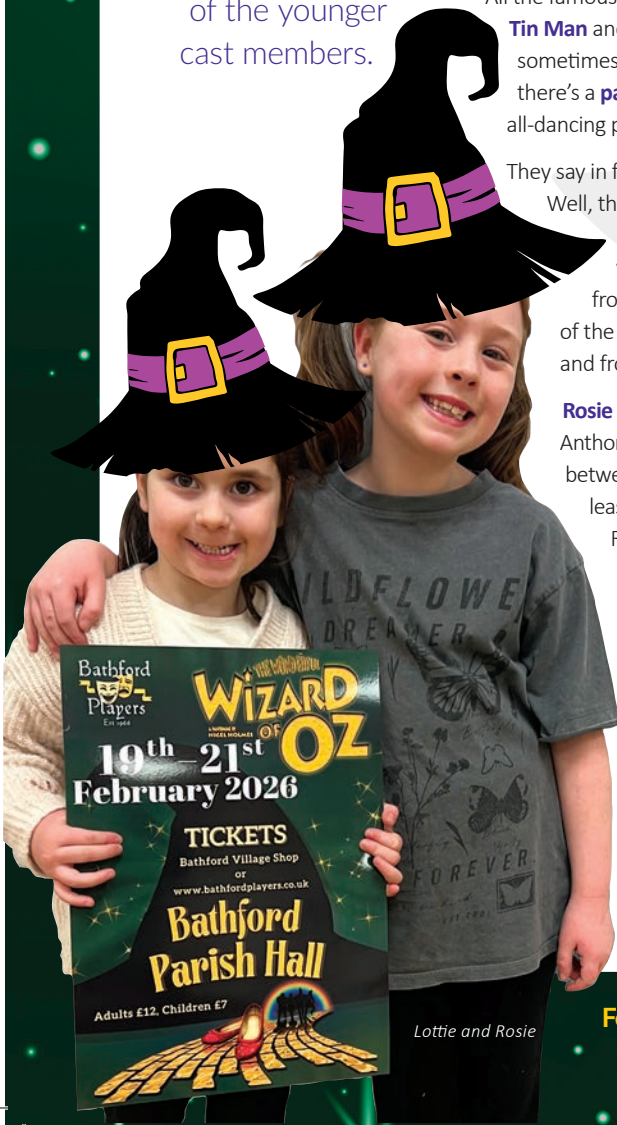
The Bathford Players, one of Bathford's longest serving community groups, is celebrating its 60th anniversary! They've presented so many productions over the years, drama, musicals and comedy – and many pantomimes! And this year's no different! After the success of Peter Pan and Snow White, Director Emma Sanchez and her Musical Director husband Anthony have returned to steer this production of *The Wizard of Oz*!

All the famous characters are there – **Dorothy, the Scarecrow, Tin Man and the Lion**...and some extra **surprise characters**. It's sometimes hard to know which witch is which! And of course, there's a **pantomime Dame**! Oh yes there is! It's an all-singing, all-dancing production to blow your socks off!

They say in film and theatre 'Never work with animals and children'. Well, this production has both! A fair size of the cast includes the **'Munchkins'**, young residents of the land of Oz, so we're putting them in the spotlight. They're recruited from sons and daughters of other cast members, friends of the Director, other drama groups and past productions, and from a wide local area as well as Bathford.

Rosie and Lottie are the willing offspring of Emma and Anthony, and they have enough energy and enthusiasm between them to power a turbine! When asked what Rosie least enjoyed about rehearsals she said: **"Standing still"**. Rosie, aged 8, who plays 'Ginger' is returning for her third pantomime. 5-year-old sister Lottie, plays Toto, Dorothy's faithful dog, and loves **"doing all the songs"**.

The energy pervades throughout these Munchkins. Max, aged 9- aka 'Gizmo' – hates having to be quiet during rehearsals. He signed up **"...because Mum is friends with the Director"** and has also appeared onstage before. His favourite things about the show are **"learning my lines and dancing, and meeting new people and making friends"**, as demonstrated by the young ones who take every opportunity to mix together.



Lottie and Rosie

February 19, 20 at 19:30, with two shows on Saturday
Tickets available from The Village Shop

A SHOW!

11-year-old Ben, who plays 'Ziggy', has Emma as his Drama teacher. Asked what acting he's done before, he confidently said: **"Oh it would take too long to list them all... It's just fun, even if you mess up!"** Surely a real 'thespian' in the making!

The production is filled with songs, choreographed by Krys Cooper (see opposite), and the lively singing and dancing provide an extra source of excitement for the children alongside the acting. 11-year-old Jake – aka 'Rascal' – is experiencing pantomime for the first time. **"I love learning the complicated dance moves... as well as enjoying the humour"** he says.



Krys coaching the moves

However, 8-year-old Sophie, who plays 'Nimmie' finds learning the dances her least favourite part of rehearsals. (Sophie, the adults struggle too!), but she is very excited by the whole show.



Wicked Witch and the Munchkins

Martyn (8)- alias Shadow- summed it up concisely. What do you enjoy about rehearsal? **"Everything!"** What do you least enjoy? **"Nothing!"** That sense of fun shines through every child. They all repeated how excited and nervous they are about the forthcoming performances, yet unanimously encouraged other children to get involved in drama—whether acting or backstage—for the sheer fun and excitement it brings.

That's Showbiz folks!
And a good time is guaranteed for all! All together now...
Oh yes it is! Don't you dare miss it!



Krys Cooper: Choreographer and actor

Krys, at 16, of Mountain Wood, is a student of Performing Arts at Bath College says: **"I loved music and dance probably from birth, so I'd say I'm just a natural singer/dancer!"**

Having performed in five previous Players productions, including choreographing **Snow White** last year, Krys was invited back by Emma, Director of *The Wizard of Oz*, to choreograph the dance numbers in this production (as well as playing the part of the Scarecrow)!

The renowned American choreographer **Merce Cunningham** and musician **Sophie Xeon** are cited by Krys as major influences on Krys's work. Asked how the selection of movements for a routine is made, Krys says: **"Randomness is the best way to be creative, but I have a number of set moves and often I just roll a dice and whichever number comes up, I include it!"** Are you happy with the production so far...? **"The cast have embraced the dance routines and I love seeing my art portrayed. Of course, there's a big hope that it'll all be alright on the night!"**



aturday 21 at 14:00 and 18:30, Bathford Parish Hall.
e Shop or www.bathfordplayers.co.uk



HOMWOOD

HOTEL | KITCHEN | SPA

Wellness starts here

spa membership by Homewood

homewoodbath.co.uk | reservations@homewoodbath.co.uk
01225 580 439 | @homewoodbath

CHILDREN'S CREATIVE WRITING CHALLENGE

Many thanks to all the children who entered the Bathford Bulletin Creative Writing Challenge, and congratulations to our 'Most Promising Young Writer', Lillian for her story 'The Backpack that hated Mondays!' We loved the originality, use of dialogue and narrative voice. She will receive a book token for her efforts. Congratulations also to Daisy, whose imaginative, action-packed squirrel adventure was picked as 'highly commended'.

THE BACKPACK THAT HATED MONDAYS

By Lillian Age 8

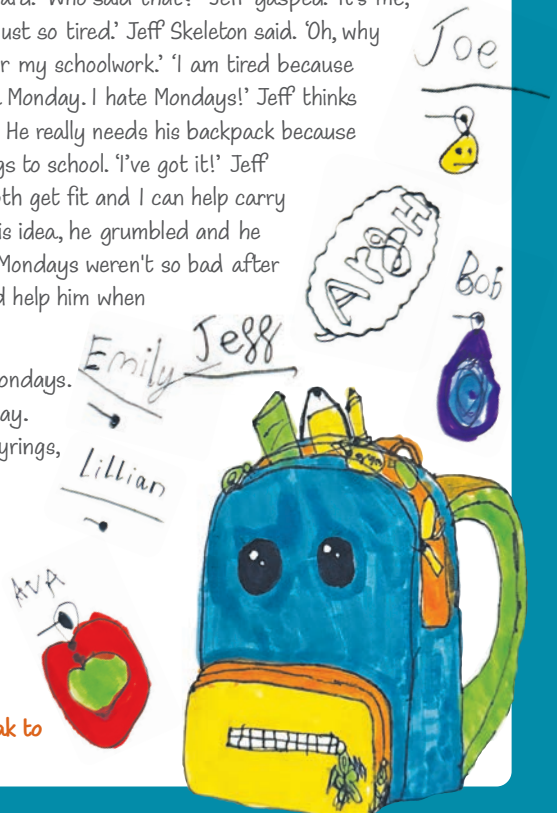
Once there was a boy called Jeff, he went to a school called Pretzel High on Mondays, but his backpack hated Mondays. Jeff's backpack is called Jeff Skeleton. Jeff likes to be the best student ever so Jeff Skeleton had to hold lots of things including 28 keyrings attached to Jeff Skeleton's zipper! Jeff only needed to take one thing out of his bag at a time, so Jeff Skeleton was always so tired.

Jeff didn't know his backpack could talk. (DUN DUN DUN)

On Jeff Skeleton's first day as a backpack, he didn't realise how much he would have to carry so by the end of the day he shouted 'grrr I hate being a backpack because I have to hold so much stuff!' Jeff jumped back, shocked by what he heard. 'Who said that?' Jeff gasped. 'It's me, your backpack! I'm sorry to scare you but I am just so tired.' Jeff Skeleton said. 'Oh, why are you so tired? I only use you on a Monday for my schoolwork.' 'I am tired because you make me carry so much and it's always on a Monday. I hate Mondays!' Jeff thinks for a moment. How could he help his backpack? He really needs his backpack because without him he wouldn't be able to take his things to school. 'I've got it!' Jeff said. 'We can go to the gym, that way we can both get fit and I can help carry some things.' Jeff Skeleton wasn't sure about this idea, he grumbled and he moaned. But by the end of Monday, he realised Mondays weren't so bad after all, especially now he's got a friend to talk to and help him when things get hard.

So from that moment on, Jeff Skeleton LOVED Mondays. That was until... Jeff had a birthday. On a Monday. Can you guess what he got? I will tell you. 42 keyrings, and they were heavy ones too!

After that, Jeff Skeleton went back to hating Mondays. Until Jeff had an idea. He told his friendly backpack that he doesn't need 42 keyrings, so he'll just use 14 keyrings because that is his age now. That made Jeff Skeleton so happy that he loves Mondays again. **If he ever starts to hate Mondays again, he will just speak to his best friend Jeff.**



www.treecycle.biz ◀

TREECYCLE ARBORISTS LIMITED

07805859031
adam@treecycle.biz



Tree Trimming & Pruning

Keeping your trees healthy and looking great year-round.



Tree Surveys and Reports

Expert assessments for planning, safety, and compliance – fast and reliable.



Emergency Tree Removal

Rapid response for dangerous or fallen trees – safe and efficient.

Call for Great Service!

**Professional tree care
you can trust.**

AROUND THE GARDEN

with Kevin Marris



As I write, the first snowdrops are appearing; by the time you read this they'll be carpeting the garden, soon giving way to the daffodils. The

primroses have already braved the weather, and suddenly everything is waking up – including the reminder that I should be doing the same. Have I done any winter planning at all? Well, I've at least put Potato Day in Marshfield (Feb 14th) in the diary. While I'm there, I'll pick up shallots – the banana-shaped ones, as requested by the 'kitchen staff', because they're easier to use in certain recipes. And since the point of growing food is to eat it, that seems fair enough.

Back to planning: there's plenty to think about besides holidays in far-flung places. This year I'm determined to look through the **Flower Show schedule** and see how many categories I can enter beyond the gardening ones.



Talking of the Flower Show, you'll know what a wonderful celebration of village life it is – running now for over a century. It's an event for the village, by the village, which means it needs all of us.

To keep it flourishing, we need younger people to get involved. That might begin with entering a class or encouraging children and young people to take part, so they grow up ready to carry the tradition forward. From contestants come helpers, and from helpers come future committee members – the people who keep the show running year after year.

This year our treasurer is stepping down, and we're looking for someone to take on this straightforward role. You don't need to be a gardener or a baker; just willing to join our small, friendly team and help keep this much-loved day in the Parish calendar.

If you'd like to know more, please give me a call: 01225 859353.

BATHEASTON GARDEN GROUP

Wed 11 Feb at 19:30 in Bathford Parish Hall

Guest speaker – Eddie Bailey: 'The Original Gardeners and what we can learn from them'

Eddie, from the RhizoPhyllia School of Gardening (www.rhizophyllia.co.uk), is an advocate of organic, no-dig gardening methods that work in harmony with soil microorganisms. Come along and find out about the role of the 'Soil Food Web' in plant health and growth.

Non-members welcome, admission £5 (pay on the door, no need to book).

For more information on Batheaston Garden Group and forthcoming events, please visit our website www.batheastongardengroup.co.uk





CALLING ALL BREAD BAKERS IN BATHFORD!

Whether you bake the occasional loaf, are a committed sourdough enthusiast, enjoy experimenting with different styles of bread, or rely on your trusted bread maker, would you be interested

in forming a local Bathford bread-baking network? It could be to share recipes, tips, experiences, favourite cookbooks – or simply to taste each other's creations! If that sounds appealing, I'd love to hear from you! Contact me via maureen@itsabreezebaking.uk



Real Bread Week runs from **21 February to 1 March 2026**. This annual international celebration, led by the **Real Bread Campaign** (www.sustainweb.org/realbread), champions bread made the traditional way.

With growing concerns about ultra-processed foods (UPFs), 'bread' – often packed with additives – is frequently highlighted as a culprit. In its simplest form, bread needs only four ingredients: flour, yeast, water, salt... and time. Real Bread contains no chemical raising agents, no 'processing aids', and no other additives. More than 95% of what is sold as 'bread' in the UK doesn't meet this basic standard.

Fortunately, the **Village Shop** stocks **Hobbs House Bakery** loaves, and their **Wild White, Organic Rye, and Seeded Sourdoughs** all meet the Real Bread Campaign's criteria. These can be ordered directly through the Shop.

Maureen Breeze

Real bread doesn't have to use a sourdough starter. Bakers' yeast – either dried or fresh is fine. Locally, fresh yeast can be bought from Morrisons – just ask at their bakery counter.

Kath Shayler, a recent adopter of a sourdough starter – or 'mother' as it can be called – and now baking successful and delicious sourdough bread, shares her recipe:

- 160g starter
- 385g white bread flour
- 250g lukewarm water
- 1½ tsp Salt

Makes a fairly wet dough – seeded and wholemeal may require more water

1. Mix the starter, flour, salt and water together well to form a shaggy ball, then set aside, covered, for 30 mins
2. First fold – take some dough and gently stretch it upwards then fold it back over the rest of the dough. Repeat, turning through 90 degrees each time for 5 turns then set aside for 30 mins
3. Repeat the previous stage at least 2 more times
4. After the last fold and set-aside, turn the dough out onto a floured surface and shape it before placing it upside down into a bowl. Cover and put into the fridge for 24-48 hours
5. Set oven to 230°C and place Dutch oven (cast iron casserole) inside to heat up
6. Once the oven is hot, remove the Dutch oven then turn the dough out onto parchment paper and slice with a sharp knife or blade. Place the dough right side up (on parchment paper) into the pan and replace the lid. (Careful – the lid will be very hot!)
7. Put it into the oven and cook for 35-40 minutes, then remove the lid and continue to cook for a further 15 mins (longer if necessary) until the bottom sounds hollow when tapped
8. Place on rack and leave to cool before eating (that's the hardest bit!!)

YORKSHIRE PUDDING

My granny's recipe for Yorkshire Pudding was immortalised in the book **84 Charing Cross Road** by Helene Hanff when my mother Daphne worked at Marks & Co booksellers at the eponymous address – 84 Charing Cross Road, London. This true story is of a correspondence relationship between a bibliophile in New York, Helene Hanff, and the staff of Marks & Co. From 1949, over 2 decades. Miss Hanff requested first editions of books and Frank Doel the manager corresponded back. The enduring literary relationship also drew in the rest of the staff when Helene sent regular food parcels to the bookshop from America as rationing was still in place in Britain until 1954.

It was as a thank you to Helene for her kindness and the food parcels shared with Marks' staff, that my mother wrote to Helene with the idea of trying **Yorkshire Pudding** for a celebratory dinner she was cooking for her partner – and passed on the recipe and instructions that she'd learnt from her mother Lillian (my grandmother):

"There are many ways of doing it but Mummy and I think this is the simplest for you to try. Put a cup of flour, an egg, a half cup of milk and a good shake of salt into a large bowl and beat altogether until it is the consistency of thick cream. Put it in the fridge for several hours. (It's best if you make it in the morning).

When you put your roast in the oven, put in an extra pan to heat. Half an hour before your roast is done, pour a bit of the roast grease into the baking pan, just enough to cover the bottom. The pan must be very hot. Now pour in the pudding and the roast and pudding will be ready at the same time.



I don't know quite how to describe it to someone who has never seen it, but a good Yorkshire Pudding will puff up very high and brown and crisp and when you cut into it you will find it hollow inside."

Helene's response to Daphne heralded a triumph:

"Yorkshire Pudding out of this world, we have nothing like it, I had to describe it to somebody as a high, curved, smooth, empty waffle!"

Extract from **84, Charing Cross Road** by Helene Hanff. First published 1971 by Andre Deutsch Ltd and reprinted 2007 by Sphere. The book was later adapted for the stage and film as '84 Charing Cross Road'

Hillary Carr



Granny's Recipes!

Continuing with our theme of treasured family recipes, Hillary Carr shares his story of his granny's recipe. Let us know if you have one to share.



Daphne and her Mother Lillian on Daphne's wedding day



Daphne Carr



AUCTIONEUM

FINE ART AUCTIONEERS & VALUERS

Our Bath saleroom is open Mon-Fri
9am to 5.30pm for drop-in valuations.

To arrange a home visit, please call,
email or go to our website.



SOLD - £39,000!

John Craxton (1922-2009) - Fish hawker with basket 1951
tempera on paper



SOLD - £6,500!

Vintage early 20th century glass cased model SS Brimsdown ship collier

SOLD - £8,600!

1766 Bristol Old Vic silver theatre ticket



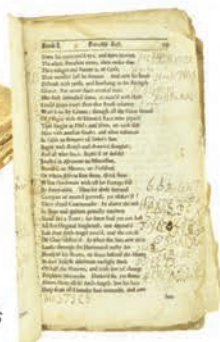
SOLD - £23,000! Jean Souverbie

(French, 1891-1981) - Allegorical figure oil on canvas



SOLD - £12,000!

1688 Paradise Lost - Copy of Charles Killigrew, Master of Revels



ENTRIES WANTED FOR OUR WINTER & SPRING SPECIALIST AUCTIONS

AUCTIONEUM OF BATH

Tel: 01225 251303

Broadlands Farm, Box Road,
Bathford, BA1 7LR

AUCTIONEUM OF BRISTOL

1 Hanham Business Park, Memorial Road,
Hanham, Bristol, BS15 3JE Tel: 0117 967 1000

info@auctioneum.co.uk
www.auctioneum.co.uk



A VALUATION DAY WITH AUCTIONEUM by Hillary Carr

Auctioneum arrived in Bathford in 2023, establishing their auction room on the A4 Box Road, to complement their other saleroom in Bristol.

They rely heavily on the public for leads – most often from probate, house clearances and valuation days – where they identify items suitable for auction. Their schedule is a busy one – around six valuation days each month across Somerset, Wiltshire, South Gloucestershire, Bristol, and Wales.

Hillary Carr joined them for a recent **Valuation Day at Pickwick Hall, Corsham**, to see what treasures might turn up.

Owner Evan McPherson was accompanied by his colleague John Sturrock, an antiques valuer. Throughout the session, members of the public brought along a fascinating assortment of objects. Many were declined as not having sufficient value for auction, though most owners weren't surprised – they were simply curious about items inherited from family members or rediscovered in lofts and sheds. Among the submissions were a **modern painting in a 19th-century frame**, **Scouting books and photo albums**, **Rupert Bear annuals**, **thimbles**, **clocks**, **prints**, a **1920s watch**, a **tapestry** and a **christening set**.

A handful of items did spark real interest: a **marble chessboard** with **pewter Egyptian Pharaoh pieces**, a **Victorian musical photo album**, and a **racing saddle** belonging to jockey **Mick Fitzgerald**, signed by **Tony McCoy**, **Ruby Walsh** and **Fitzgerald** himself. These will be going forward to auction.

When asked about the most unusual or valuable items Auctioneum has handled, Evan shared some remarkable examples; **'Fish Hawker With Basket'** a **painting by John Craxton**, recently fetched **£39,000**, a pair of **Mahatma Gandhi's glasses** achieved **£260,000**; and, discovered during a house clearance, a **first edition of J.R.R. Tolkien's The Hobbit**, which sold for an astonishing **£43,000**. They have also sold several works by **Banksy**.

So why not take a look in your own loft or storage spaces and rummage around? You never know what might be tucked away—art, furniture, memorabilia of all kinds, whether literary, military or musical (rare records, perhaps?), or more recent items such as photographs, autographs or childhood toys. A painting consigned locally sold for **£24,000** recently. It might be your turn next.



Marble Chessboard



Queen Mary Atlas



Autographed Racing Saddle



Evan with a modern painting in a 19C frame

SEE LEFT FOR CONTACT DETAILS



Abney & Baker
Putting the *care* into *homecare*

10

homecare.co.uk



Just twelve weeks on, I'm walking unaided, travelling confidently on buses and trains, and enjoying a new sense of freedom and independence.

Brian, 92, Client

Stay independent at home with **proactive, preventative care and support**

Home support to help you stay in control, avoid setbacks, and enjoy more freedom.

We provide proactive home support that **helps you rely on us less over time** by reducing, delaying, or avoiding the need for long-term care.

Our **Wiltshire-based care team** don't just support you day-to-day, they're trained to spot early signs of change.

Enjoy **peace of mind** knowing you're **supported today and prepared for tomorrow.**



Stay steady, stay safe. Scan to get your **free Fall Prevention Introductory Course** and build confidence with every step.

BATHFORD QUILT GROUP

Although we haven't met as a group since early November, we have been busy behind the scenes. More flowers and letters have been made, and we are awaiting a date from the School to print the children's hands, which will then be available to embellish. Anyone who wants to do some simple embroidery, please apply to Wendy or Heather. Wendy still has some letters and flowers for embellishing.

Parishioners have now stepped forward to make pieces for the **Film Club, Follyfest,** and **The Allotments.** We are excited to see these.

Our next meeting is on **Tue 3 Feb at 10.30** in **The Community Room, Mountain Wood.** You are also welcome to come along and sew on **Monday afternoons** from **14:00-16:00** in the **Village Shop café.**

For further information, please contact **Wendy 07814 015962, Ruth 07966 507922** or **Heather 07810 867155.**

BATHFORD SOCIETY TALK

Mon 23 Feb at 20:00, Bathford Parish Hall
(Coffee available from 19:30)

National Trust and Avon Conservation Area: Joanna Rolfe, Project Manager with Sarah Dann, Lead Ranger for the National Trust and Ken Tatem for Avondale Nature Reserve.

Bathampton Meadows Nature Reserve alongside the dual carriageway, is owned by the **Highways Agency** and managed by the **Avon Wildlife Trust.** It is a conservation area and not open to the public; its priority is to provide a flood plain and it is managed as wetland grassland. By contrast, **Bathampton Meadows,** which is owned by the **National Trust,** has many visitors, but relatively low biodiversity. There are plans to develop the Meadows site by improving public access, boosting biodiversity and continuing to engage the local communities around it. The talk will explore the present situation and future plans for both sites.

BATHFORD TWINNING ASSOCIATION – UPDATE

Shrove Tuesday (17 Feb): We're adding a touch of French flair again this year with crêpes in the café. Crêpes are thinner and tend to be a little crispier than traditional pancakes. Enjoy them with a choice of fillings or take some away. See details below.

Visit 2026: We look forward to welcoming a group from France in early April or early July. Hosting is great fun – get in touch if you'd like to know more.

Eker Bursary Fund: Financial support is available for young people from Bathford of student age wishing to travel independently to Artannes and stay with a family there, as part of their studies.

Keep in touch: Have your name added to our mailing list to receive periodic newsletters and information.

Contact us at:
bathfordtwinningassociation@gmail.com

Bathford Twinning Association

SHROVE TUESDAY

Come and enjoy

CRÊPES

Pancakes with a
French twist



BATHFORD VILLAGE SHOP
and Café

TUESDAY 17 FEBRUARY
3–5pm

BATHFORD PARISH COUNCIL

HIGHWAYS IMPROVEMENTS

Bathford Parish Council Highways Committee is pleased to announce several road schemes that are near implementation and/or are in progress.

A363 Bradford Road

W/c 16 February for two weeks, teams from BANES Highways will be working along the Bradford Road, to introduce the following changes:

- **Mandatory 40mph speed limit, from Monkton Farleigh junction/Dry Arch to the Roots allotments**
- **Mandatory 30mph speed limit from Roots allotments to A4 roundabout**
- **No overtaking, the entire length from Monkton Farleigh junction to A4 roundabout**
- **Restoration of chevrons and bollards and improved verges and surfaces**

Further opportunities for developments are ongoing and will be advised in the near future.

Bathford Hill and High Street

Public consultations will take place imminently with residents along the route prior to the implementation of a 20mph speed from the A363 junction to the top of the High Street. We are unaware of the exact date for implementation, but likely during the 2026/27 fiscal year.

As a Committee and Council, we are delighted that these schemes have come to fruition after many years of determined negotiation with BANES.

DEFIBRILLATORS, EMERGENCY BLEED KITS AND PUBLIC FIRST AID TRAINING

The Parish Council meeting discussed resident and public safety and whether there should be further facilities to address cardiac arrest and blood loss. Members of the public can help someone in cardiac arrest by immediately dialling 999, starting CPR, and getting a defibrillator, designed for untrained users with clear voice prompts to deliver an electrical shock, significantly boosting survival chances by restarting the heart. There is one defibrillator currently sited at the Village Shop. We propose to install a second device at the top of the High Street opposite the allotments and near Garstons. We will also be organising more First Response/CPR training for the community.

We would also like to install Emergency Bleed Kits at both sites. These are specialised first-aid kits enabling bystanders to quickly stem blood loss from severe injuries until professional help arrives, potentially lifesaving.

We are conscious this requires community funds to finance these installations (c £2K) and welcome comments from residents. If supported, this could become part of a programme to position kits at other parish sites. To respond, please contact the Clerk on clerk@bathford.net



NEXT PARISH COUNCIL MEETING
Monday 23 February 19:00 | Mountain Wood Community Rooms

The public are invited to attend and raise any issues within the first ten minutes.
Contact: clerk@bathford.net | Tel. 01225 858220

WHAT'S ON - FEBRUARY 2026

- Service of Holy Communion
Sun 1 Feb | 10:00
St Swithun's Church
- Reconnect
Sun 1 Feb | 16:30 (for Yr 7),
17:30 (for Yr 8/9)
St Swithun's Church
- Bathford Quilt Group
Monthly Meeting
Tue 3 Feb | 10:30
Mountain Wood
Community Room
- Mobile Library Service
Wed 4 Feb | 13:00-13:45
Dovers Park by School
- Bathford Village Choir Practices
Thu 5 Feb (and every Thursday)
20:00-21:30
Bathford Parish Hall
- BINGO
Fri 6 Feb | 19:30
Village Club
- Bathford Repair Cafe
Sat 7 Feb | 09:30-12:00
Bathford Parish Hall
- Contemporary Service
Sun 8 Feb | 10:00
St Swithun's Church
- Come and See! Especially for
children ages 4-11
Sun 8 Feb | 16:00
St Swithun's Church
- Batheaston Garden Club Talk:
No-Dig Gardening Methods
Wed 11 Feb | 19:30
Bathford Parish Hall
- Live Music: Valentine's Party
with Samantha Nolan
Sat 14 Feb | 20:30
Village Club
- Service of Holy Communion
Sun 15 Feb | 10:00
St Swithun's Church
- Music on a Sunday Afternoon
Sun 15 Feb 2026 | 15:00
St Swithun's Church
- Shrove Tuesday Crepes
Tue 17 Feb | 15:00 - 17:00
Village Shop and Cafe
- Ash Wednesday
Morning Service
Wed 18 Feb | 10:00
St John's, Batheaston
- Mobile Library Service
Wed 18 Feb | 13:00-13:45
Dovers Park by School
- Service of Holy Communion
with Ashing
Wed 18 Feb | 19:30
St Swithun's Church
- Shockerwick House
Coffee Morning
Thu 19 Feb | 10:30-12:30
Shockerwick House
- Wizard of Oz Pantomime
by the Bathford Players
Thu 19-Sat 21 Feb
4 performances at
various times
Bathford Parish Hall
- Welcome Church
Sun 22 Feb | 10:00
St Swithun's Church
- Evening Prayer
Refreshments at 16:00
Sun 22 Feb | 16:30
St Swithun's Church
- Film Club: Gifted
Mon 23 Feb | 14:00
St Swithun's Church
- Bathford Society Talk:
Bathampton Meadows
Mon 23 Feb | 20:00
Coffee available from 19:30
Bathford Parish Hall
- Concert for 4th Anniversary
of Ukraine War
Tue 24 Feb 2026 | 19:30
Bath Abbey
- Soup Lunch for Lent
Wed 25 Feb | 11:45
St Swithun's Church
- BEFA Quiz and Supper Night
Fri 27 Feb | 18:45-22:15
Bathford Parish Hall
- Jazzfest
Fri 27 Feb | 20:00
Village Club
- Rugby: Avonvale RFC
1st XV vs Frome II
Sat 28 Feb | 14:30
Rugby Club, Bathford
Recreation Ground
- Live Music
Sat 28 Feb | 20:30
Village Club

FOR YOUR DIARY

- Wednesday Soup Lunches
for Lent
Wed 4, 11, 18 & 25 Mar | 11:45
St Swithun's Church (11 and 25
Mar), St John's (4 Mar), Rhymes
Pavillion (18 Mar)
- Bathford Repair Cafe
Sat 7 Mar | 09:30-12:00
Bathford Parish Hall
- Ceilidh
Sat 21 Mar | 19:00-23:00
Bathford School
- Music on a Sunday Afternoon
Sun 22 Mar | 15:00
St Swithun's Church
- Quiz Night - Bathford Events
Sat 25 Apr | 19:00-22:30
Bathford Parish Hall
- BEFA Big Birthday Bash
Sat 16 May
Village Shop
- Nearly New Sale
Sat 31 May | 12:00-16:00
Bathford Parish Hall
- St Swithun's Charity Quiz
Fri 19 June | 19:30
Bathford Parish Hall
- Follyfest
Sat 4 July | 12:00-21:00
Folly Field, Recreation Ground

whiteley helyar

dedicated residential estate agents



Successfully selling
property in Bathford
for over 40 years

6 Princes Buildings, Bath, BA1 2ED | 01225 44 75 44
rupert@whiteleyhelyar.co.uk | www.whiteleyhelyar.co.uk