

An aerial photograph of the New York City skyline at dusk. The image shows a dense cluster of skyscrapers, with the Freedom Tower (One World Trade Center) prominently featured in the center. The city lights are beginning to glow, and the sky is a mix of orange, yellow, and blue. The Hudson River is visible on the left side of the image.

STRICTLY CONFIDENTIAL – NCNDA REQUIRED

# BOOMERANG – THE MASTER PLAN

## Applied Intelligence for the Future of Global Business and Strategic M&A

A comprehensive, intelligence-driven strategic framework engineered to identify, structure, and execute high-value mergers and acquisitions across critical global sectors – integrating legal precision, financial engineering, and geopolitical foresight into a single transformative platform.



**BOOMERANG**

# Executive Summary

BOOMERANG – THE MASTER PLAN is a multidisciplinary, cross-jurisdictional platform purpose-built for the next generation of global capital deployment. It is not merely an M&A advisory framework – it is a living intelligence architecture that continuously synthesises legal, financial, economic, and geopolitical data to generate actionable strategic insight. Designed for institutional-grade execution, BOOMERANG operates across the full transaction lifecycle: from early-stage target identification and due diligence through to post-acquisition integration and value realisation.

## Strategic Mandate

To identify, structure, and execute high-value M&A across energy, finance, food supply, and innovation ecosystems – creating sustainable institutional growth and long-term stakeholder value.

## Core Design Principles

- Intelligence-first decision architecture
- Full cross-jurisdictional legal compliance
- ESG-aligned governance and accountability
- Multidisciplinary team integration
- Long-horizon value creation focus

📄 All materials contained within this framework are strictly confidential. Disclosure is exclusively permitted under a fully executed Non-Circumvention, Non-Disclosure Agreement (NCNDA). Unauthorised distribution constitutes a material breach of confidentiality obligations.

# The Energy Imperative

Energy sits at the absolute cornerstone of global economic stability and long-term civilisational transformation. BOOMERANG's primary strategic concentration is the energy sector in its entirety – spanning legacy hydrocarbon infrastructure through to the full spectrum of renewable transition technologies. The framework recognises that energy M&A requires not only financial acumen but deep geopolitical intelligence, regulatory fluency, and technical due diligence capabilities that span multiple asset classes simultaneously.



## Oil & Gas

Upstream exploration, midstream logistics, downstream refining, and LNG infrastructure – targeting assets with proven reserves, operational cash flows, and strategic geographic positioning.



## Solar Energy

Utility-scale photovoltaic projects, distributed generation portfolios, and solar manufacturing assets across high-irradiance geographies with favourable regulatory frameworks.



## Wind Energy

Onshore and offshore wind farm acquisitions, development pipeline assets, and turbine supply chain integrations in jurisdictions with strong grid connectivity and offtake certainty.



## Hydroelectric

Run-of-river and reservoir hydro infrastructure offering long-duration, dispatchable clean energy – particularly in Latin America, Southeast Asia, and Sub-Saharan Africa.



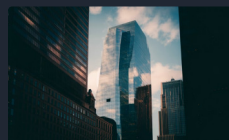
# Strategic Sector Expansion

Beyond energy, BOOMERANG applies its intelligence-driven framework across a carefully selected portfolio of adjacent and complementary sectors. Each domain has been chosen based on systemic global importance, structural M&A opportunity density, and alignment with long-term macroeconomic trends. The platform's cross-sector capability is a core competitive differentiator — enabling synergistic deal structures that create value across multiple verticals simultaneously.



## Food Supply Chains

Agri-processing, cold chain logistics, distribution networks, and food security infrastructure — assets increasingly critical in a world of climate disruption and geopolitical fragmentation.



## Financial Institutions

Commercial banks, investment banks, asset managers, family offices, and private equity structures — targeting institutions with strong balance sheets, regulatory licences, and strategic distribution networks.



## Science & Research

Academic spinouts, R&D institutions, and applied science facilities — especially in life sciences, advanced materials, quantum computing, and clean technology domains.



## Startup Ecosystems

Early and growth-stage financing platforms, venture studios, and innovation hubs — fostering the next generation of disruptive enterprises within BOOMERANG's broader strategic architecture.

# Applied Intelligence Methodology

The operational heart of BOOMERANG is its applied intelligence methodology — a sophisticated, multi-layered analytical engine that transforms raw market, legal, financial, and geopolitical data into precise, executable strategic intelligence. This is what distinguishes BOOMERANG from conventional M&A advisory models: it does not react to market conditions; it anticipates them with structured, evidence-based foresight.

## Advanced Data Analytics

Proprietary data pipelines aggregate macro-economic indicators, sector-specific transaction data, regulatory filings, and market signals to produce continuously updated opportunity maps and valuation benchmarks.

## Market Trend Anticipation

Scenario modelling and horizon-scanning capabilities that identify structural shifts in demand, regulatory direction, and technology adoption — allowing BOOMERANG to position ahead of the market cycle rather than behind it.

## Artificial Intelligence Integration

Machine learning models trained on historical M&A outcomes, deal structures, and integration performance data — enabling predictive scoring of acquisition targets and optimisation of transaction terms.

## Transaction Structure Optimisation

Financial engineering capabilities spanning deal financing architecture, tax-efficient holding structures, earnout mechanisms, and post-acquisition capital allocation — designed to maximise risk-adjusted returns across diverse jurisdictions.

## Geopolitical Risk Assessment

Dedicated intelligence analysis of political stability, regulatory trajectory, sanctions exposure, and bilateral relations — ensuring that every target jurisdiction is evaluated through a sovereign risk lens before capital is committed.

## Regulatory Navigation

Deep expertise in international M&A regulatory frameworks — including competition law, foreign investment screening (CFIUS, FIRB, and equivalents), sector-specific licensing, and cross-border capital controls.

# Governance Architecture & Compliance Framework

BOOMERANG is architected upon a robust, multi-tiered governance structure that embeds compliance, accountability, and risk management at every layer of operation. In an era of heightened regulatory scrutiny — from AML and KYC obligations to cross-border foreign investment review — governance is not a checkbox exercise; it is a strategic asset that protects transaction integrity and institutional reputation.



## Regulatory Compliance

Full alignment with international legal and financial standards across all operating jurisdictions, including AML/KYC protocols, FATF recommendations, and sector-specific licensing requirements.



## Risk Management Protocols

Structured risk registers, operational risk matrices, and systemic risk mitigation frameworks applied at deal origination, due diligence, execution, and post-close integration phases.



## ESG Alignment

Environmental, Social, and Governance criteria embedded across all investment decisions — aligned with UNPRI, TCFD, and international sustainability reporting standards to satisfy institutional mandates.



## Accountability & Transparency

Clear governance hierarchies, independent oversight mechanisms, and structured reporting obligations ensuring all stakeholders maintain full visibility over capital deployment and decision-making processes.

The governance architecture is designed to operate seamlessly across complex multi-jurisdictional structures, ensuring that BOOMERANG's transactions withstand the most rigorous institutional, regulatory, and reputational scrutiny while maintaining the operational agility required in fast-moving global markets.

# Strategic Alliances & Long-Term Partnerships

BOOMERANG's most enduring competitive advantage lies in the depth and diversity of its strategic alliance network. The platform is designed not as a standalone transaction engine, but as a collaborative ecosystem — connecting institutional capital with operational expertise, sovereign mandates with private innovation, and established financial infrastructure with emerging growth platforms. These alliances are not transactional relationships; they are structural partnerships engineered for long-duration value creation.

## Institutional Investors

Pension funds, sovereign wealth funds, endowments, and insurance companies — providing patient, long-duration capital aligned with BOOMERANG's multi-year value creation timelines and ESG mandates.

## Sovereign Entities

National development banks, government investment agencies, and state-affiliated institutions — offering regulatory facilitation, co-investment capacity, and geopolitical access in key target markets.

## Private Capital Groups

Family offices, private equity sponsors, and ultra-high-net-worth investment vehicles — bringing flexible capital, sector expertise, and network access that complements institutional mandates.

## Philanthropic Organisations

Impact-focused foundations and development finance institutions — enabling blended finance structures that attract concessional capital to high-impact sectors such as food security, clean energy, and scientific research.

# Innovation, Mentorship & Next-Generation Enterprise

BOOMERANG's strategic vision extends beyond capital transactions. The platform recognises that sustainable long-term value creation requires the active cultivation of the next generation of enterprises, entrepreneurs, and institutional leaders. Through structured mentorship programmes and innovation-driven initiatives, BOOMERANG embeds itself within the growth trajectory of emerging businesses – not merely as a capital provider, but as a strategic architect of their long-term development.

## Mentorship Infrastructure

Formalised mentorship structures connect experienced institutional leaders, sector specialists, and former regulators with founders and management teams navigating complex growth inflection points. These relationships are designed to accelerate decision-making quality, governance maturity, and strategic positioning – reducing the institutional risk profile of early and growth-stage investments within the BOOMERANG portfolio.

## Innovation-Driven Initiatives

BOOMERANG actively supports innovation ecosystems through targeted financing of startup platforms, applied research commercialisation, and emerging business model incubation. Priority domains include clean technology, biotechnology, advanced manufacturing, digital infrastructure, and financial technology – all areas where convergent innovation is generating structural disruption and durable competitive advantage.

## Sustainable Economic Ecosystems

By integrating mentorship, innovation capital, and institutional partnership structures, BOOMERANG fosters self-reinforcing economic ecosystems where the success of individual portfolio companies amplifies the strategic value of the broader network – creating compounding returns for all stakeholders over time.



## Disruptive Technology Focus

Identifying and financing businesses built on genuinely differentiated technology capable of redefining sector economics at scale.



## Scalable Business Models

Prioritising ventures with demonstrated unit economics, defensible market positioning, and clear pathways to institutional-scale revenue.



## Ecosystem Interconnection

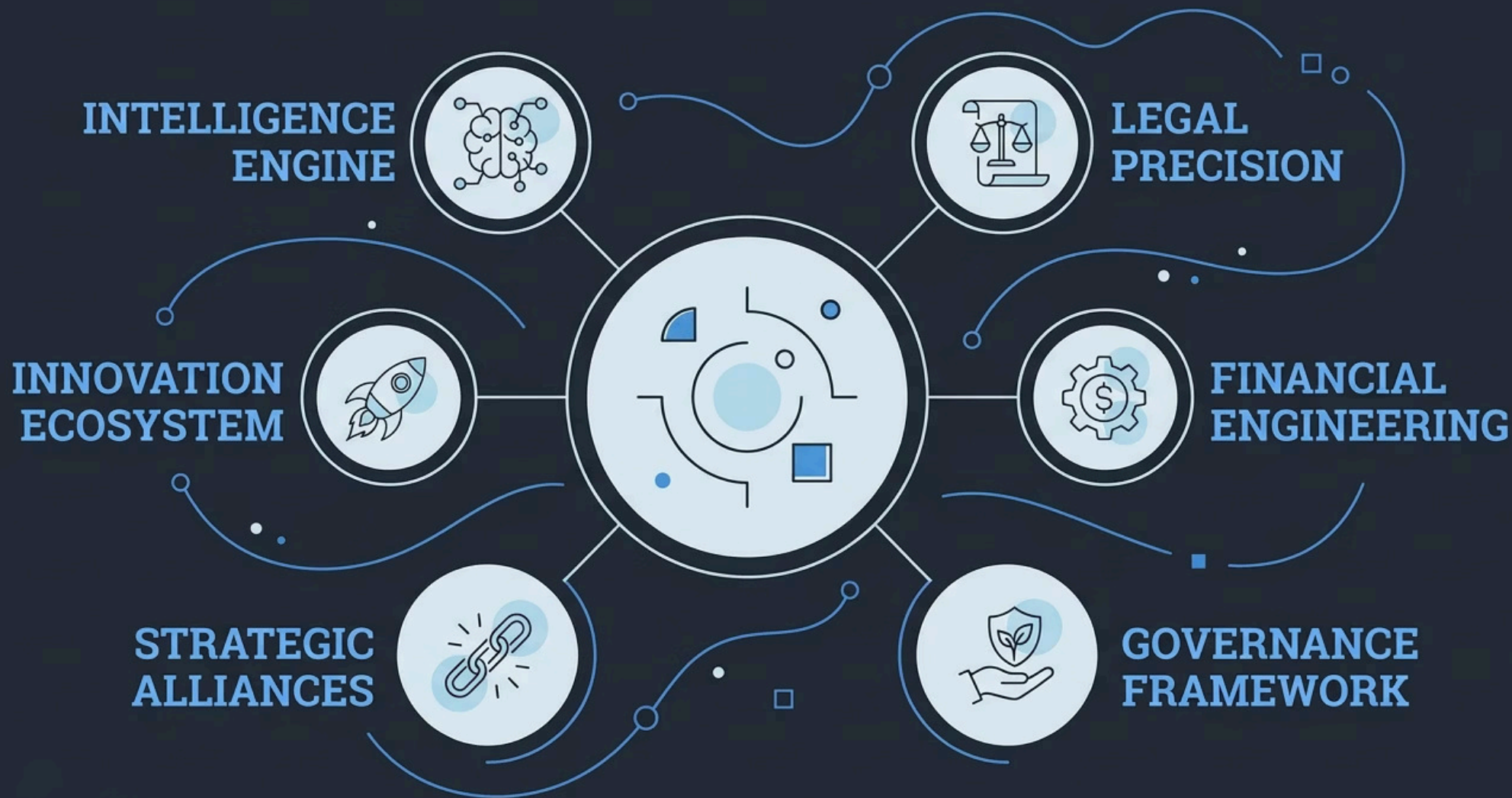
Building cross-portfolio synergies that enable portfolio companies to leverage each other's capabilities, markets, and regulatory relationships.



**BOOMERANG**

# The BOOMERANG Value Architecture

BOOMERANG's transformative potential is best understood not through individual transactions, but through the integrated architecture of value it constructs across every dimension of its operational model. The framework is designed to generate compounding strategic advantage – where legal precision, financial engineering, intelligence capability, and partnership depth reinforce one another in a self-amplifying system.



Each pillar of the architecture is indispensable. The intelligence engine identifies opportunity; legal precision ensures executability; financial engineering maximises returns; governance maintains institutional integrity; strategic alliances provide access and capital; and the innovation ecosystem ensures the platform remains at the frontier of global economic transformation. Together, they constitute a uniquely capable M&A and investment platform built for the complexity of the modern global economy.

# BOOMERANG as a Transformative Global Platform

BOOMERANG – THE MASTER PLAN is positioned not as a conventional financial instrument, but as a transformative global platform – one that applies intelligence, precision, and institutional rigour to the most consequential business opportunities of the coming decade. In a world characterised by accelerating technological disruption, geopolitical realignment, energy transition imperatives, and structural capital reallocation, BOOMERANG provides the strategic architecture to navigate complexity and capture durable, compounding value.

1

## Navigate Complexity

Deploying cross-jurisdictional legal expertise and geopolitical intelligence to operate confidently in environments that exclude less sophisticated capital.

2

## Capitalise on Emergence

Identifying and structuring transactions at the inflection point of structural sector shifts – before opportunity density peaks and pricing reflects consensus.

3

## Drive Long-Term Value

Building governance-aligned, ESG-compliant portfolios that satisfy the increasingly stringent mandates of the world's largest institutional capital allocators.

4

## Shape the Future

Through mentorship, innovation financing, and ecosystem development – actively constructing the enterprises and institutions that will define the next era of the global economy.

📄 **Confidentiality Notice:** This document and all information contained herein constitute strictly confidential and proprietary material. Any reproduction, distribution, or disclosure – in whole or in part – is strictly prohibited without a fully executed Non-Circumvention, Non-Disclosure Agreement (NCNDA) in place. Recipient acknowledges the sensitive and proprietary nature of this framework and accepts full legal responsibility for its protection.

**CONFIDENTIALITY NOTICE – U.S. FEDERAL PROTECTION APPLIES: ZABELLI INTERNATIONAL CONSULTING LLC** hereby provides notice that all content, data, and communications hosted or transmitted through this website [WWW.ZABELLIINTERNATIONALCONSULTINGLLC.COM](http://WWW.ZABELLIINTERNATIONALCONSULTINGLLC.COM) constitute confidential and proprietary information protected under U.S. federal law, including “Original Information” submitted pursuant to the SEC Whistleblower Program under 17 C.F.R. § 240.21F-7 and Section 21F of the Securities Exchange Act of 1934 (15 U.S.C. § 78u-6). Any unauthorized access, interception, review, duplication, dissemination, or use of such information by any party—**including domestic or foreign governmental authorities, financial institutions, or private entities—is strictly prohibited.**

This information is further protected under the anti-retaliation provisions of the Dodd-Frank Act (15 U.S.C. § 78u-6(h)), and any attempt to interfere with, intimidate, or retaliate against the reporting entity or its representatives may constitute violations of federal criminal statutes, including but not limited to 18 U.S.C. § 1030 (Computer Fraud and Abuse Act), 18 U.S.C. §§ 1341–1343 (Mail and Wire Fraud), 18 U.S.C. §§ 1512–1513 (Witness Tampering and Retaliation), and 18 U.S.C. §§ 1961–1968 (RICO Act). U.S. federal jurisdiction applies extraterritorially to all related conduct involving U.S. financial systems, SEC-regulated activities, or cross-border transactions. Violations may result in criminal prosecution, substantial monetary penalties, and imprisonment.

**ZABELLI INTERNATIONAL CONSULTING LLC** (United States ) together with its affiliated entity **WISE UNIVERSAL GROUP Holding Company (United Kingdom)** is a formal participant in the SEC Whistleblower framework and asserts its full rights to **confidentiality and protection against retaliation** under U.S. federal law and all communications are strictly privileged and confidential; therefore, disclosure, reproduction, or distribution without express written authorization is expressly forbidden.

**ZAMBELLI INTERNATIONAL CONSULTING LLC, with its principal place of business at 16192 Coastal Highway, Lewes, Delaware 19958, Sussex County, United States. Registered in the State of Delaware under Registration Number 3592130. Official Representation: Counsel & BA (PLS) José Zambelli.**

The company manages and administratively organizes the holding WISE UNIVERSAL GROUP Ltd, registered in England and Wales under registration number 14615225. Its registered office is located at 128 City Road, EC1V 2NX, London, United Kingdom.

- United States , New York - ZIC Branch : 140 Broadway 46th floor, New York, NY 10005 Tel : +1 (332) 331 85 99
- United States ,Florida - ZIC Branch : 4830 W Kennedy Blvd #600, Tampa, FL 33609, United States
- United Kingdom - ZIC Branch : 128 City Road EC1V 2NX London. United Kingdom +44 (0) 7471 275 766
- Canada -ZIC Branch : 1500 W Georgia St 13th Floor, Vancouver, BC V6G 2Z6, Canadá +1 (778) 819 2072
- BVI- ZIC Branch :Commerce House, Office Exchange Business Center Suite 4B, 2nd Floor, Road Town, British Virgin Island
- European Corporate Headquarters (Monaco): Monte Carlo Sun, 74 Boulevard d'Italie, 98000 Monte-Carlo + 33 783542701
- Grecee- ZIC -Branch : Athens Towers, Leoforos Mesogeion 2-4, 21St Floor Avenue, Athina 115 27, Greece
- Spain -ZIC Branch : World Trade Centre, Moll de Barcelona, S/N, Edificio Sur - 2Nd Floor, Ciutat Vella, 08039 Spain
- Luxembourg - ZIC Branch : 26Bv Royal Level 5 2449 Ville-Haute Luxembourg +(352) 333 91134
- Asia-Pacific Corporate Office (Singapore): The Signature, 51 Changi Business Park Central 2, Singapore 486066
- Middle East & Africa Corporate Office (United Arab Emirates): P.O. Box 767649, 6 Sheikh Fatima bint Mubarak Street, Zone 1E8 ,Abu Dhabi

Email: [CONTACT@ZAMBELLIINTERNATIONALCONSULTINGLLC.COM](mailto:CONTACT@ZAMBELLIINTERNATIONALCONSULTINGLLC.COM)

[INFO@JZAMBELLICONSULTING.COM](mailto:INFO@JZAMBELLICONSULTING.COM)

Phone:

(USA) +1 332 331 8599

(UK) +44 7471 275766

(Canada) +1 778 819 2072

(Monaco) +33 783 54 27 01

(Luxembourg) +352 800 90 134

Web: [WWW.ZAMBELLIINTERNATIONALCONSULTINGLLC.COM](http://WWW.ZAMBELLIINTERNATIONALCONSULTINGLLC.COM)

