

imagine
extraordinary

ES | Garage Doors
ES-PGD3040

The ES-PSD3040 garage doors blend cutting-edge design with high-durability materials, providing an aesthetic and functional solution for residential spaces. Their robust structure, combined with an efficient and quiet opening system, ensures comfort and security with every use.

Designed for homeowners seeking the perfect balance between elegance and functionality. Ideal for those who prioritize home security without compromising on style.

Features:

- Patented state-of-the-art weather seal and anti-buckling system, paired with the industry's largest roller stems, deliver unmatched strength and hurricane protection.
- Sophisticated design with modern and customizable finishes.
- Maximum security thanks to advanced locking technology.
- Superior resistance to impacts, extreme weather, and corrosion.
- Quiet operation with optimized opening and closing mechanisms.



Innovation Security & Style in Every Detail

Sizes

TOTAL SECTION	MAX FRAME WIDTH (INCH)	MAX FRAME HEIGHT (INCH)
4	240	112 1/2
	216	124 1/2
5	240	139 1/2
	216	154 1/2
6	240	166 1/2
	216	184 1/2
7	240	193 1/2
	216	214 1/2
8	240	220 1/2
	216	244 1/2
9	240	247 1/2
	216	274 1/2

ES-PGD3040

Technical Details

Performance & Highlights

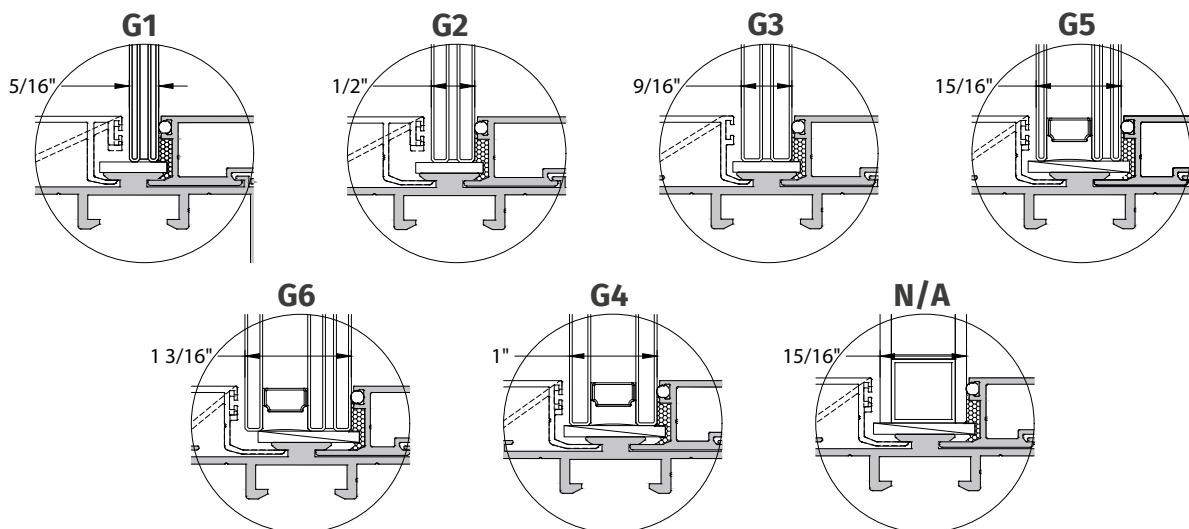
- Frame depth: 3"
- Sightline: 4 1/2"
- Designed for 5/16", 7/16", 9/16" laminated glass
- Maximum size: 222" Width x 168" Height

Features

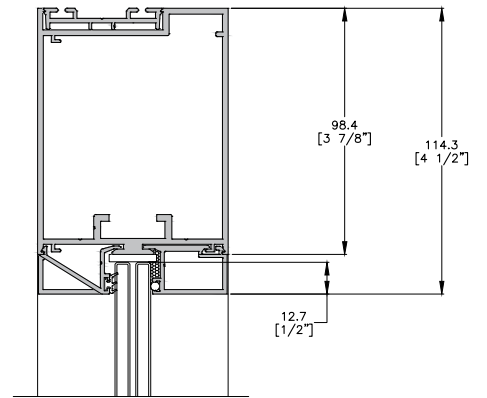
- Long lasting silicone weather-seals
- Stainless steel hardware components
- Premium nylon rollers with 3/4" stainless steel shaft
- Industrial grade stainless steel cables (5/32" & 3/16")
- Innovative panel-to-panel anti-deflection interlocking system
- Heavy-duty full angle tapered track (powder coated track options available)
- Available in multiple lite configurations (max single lite 144")
- Internal reinforcement adds maximum strength without sightline interference



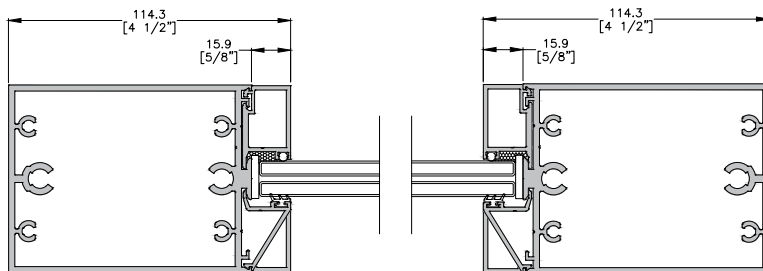
Glass Options



System Details

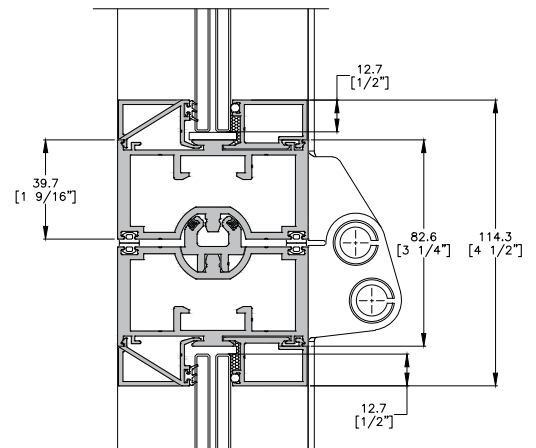


1 TOP RAIL

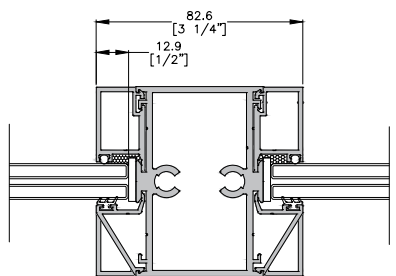


4 LEFT VERTICAL

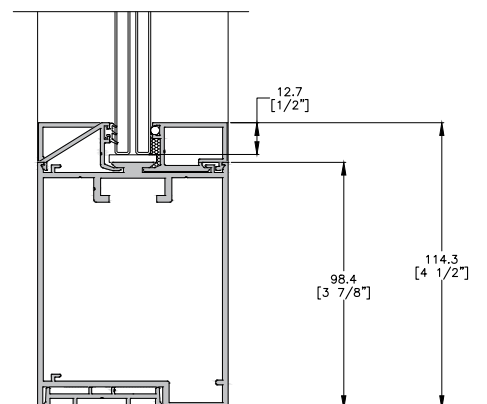
6 RIGHT VERTICAL



2 HORIZONTAL INTERMEDIATE

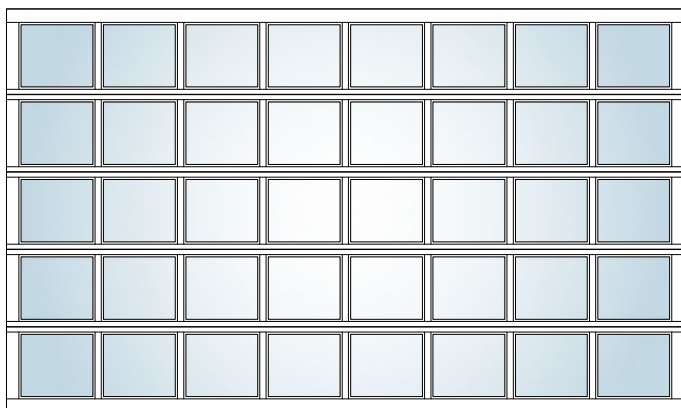
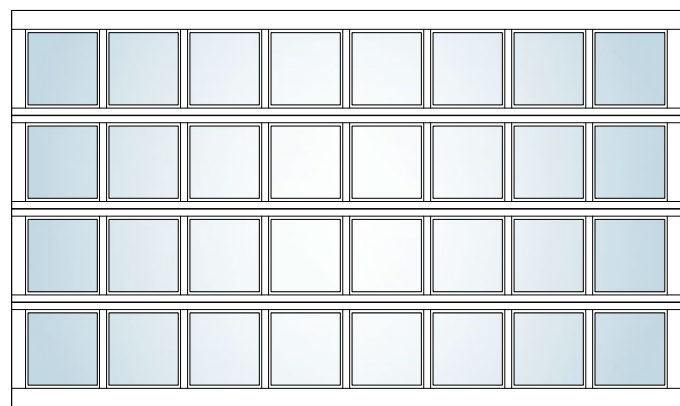
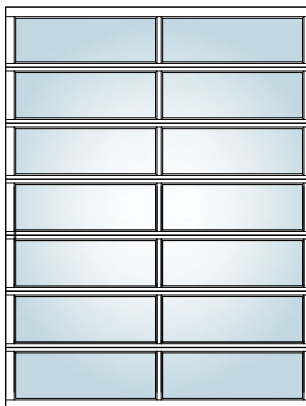
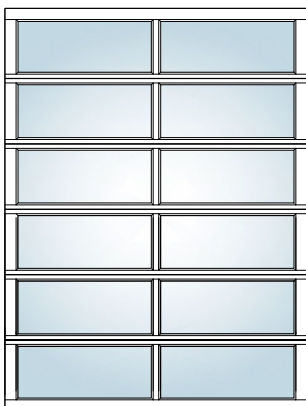
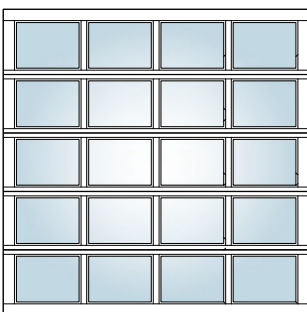
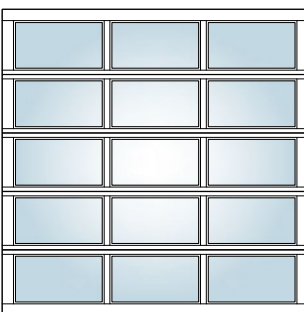
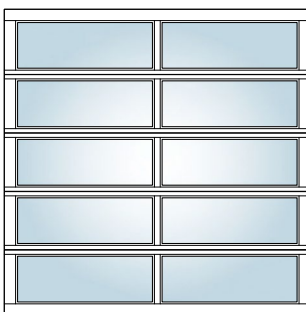
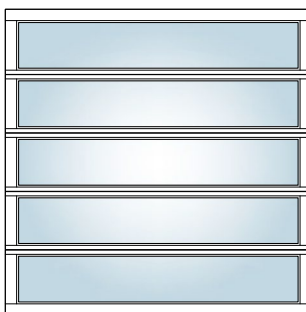
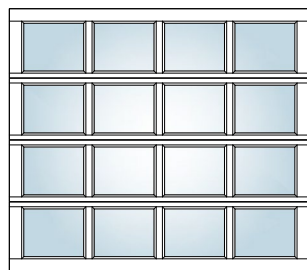
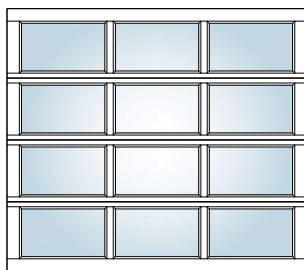
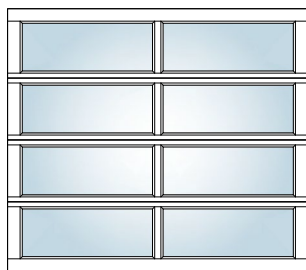
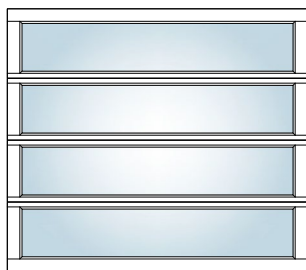


5 VERTICAL INTERMEDIATE



3 BOTTOM RAIL

Configurations



Our garage doors are fully customizable. Depending on the size, you can define the number of sections and lites to suit your unique style and architectural needs.

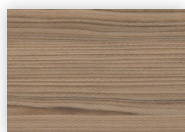


ES-PGD3040

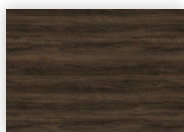
Colors and Finishes

ESKIN

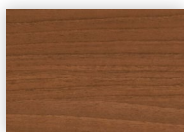
Wood finishes



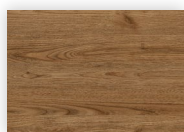
Cypress Cinnamon
1490



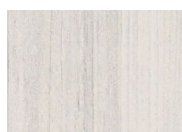
Royal Walnut
1536



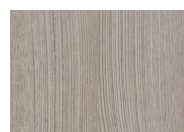
Noce Canella
1561



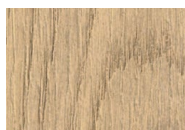
Spiced Chestnut
1517



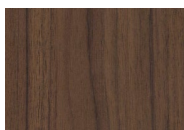
Sea White
1502



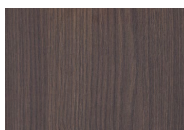
Rovere Fiumo
1462



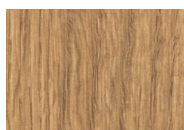
Century Oak
1554



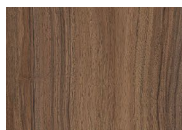
Italian Walnut
1513



Brown Oak
1836

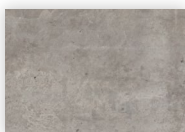


Ontario Oak
1540

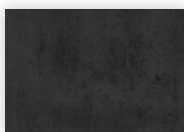


Noce Havana
1555

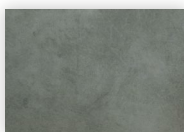
Metallic & solid panels



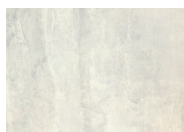
Industrial Concrete
3127



Mineral Steel
3166



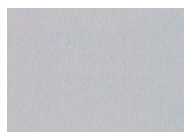
Grey Slate
3156



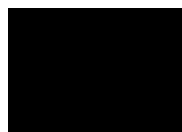
Urban Concrete
3124



Corten Metallic
3179



Metalized 2047



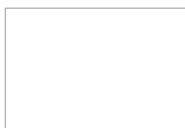
Cinder

COLOR OPTIONS

For Frames, Decorative Muntins & Tiers



Bronze



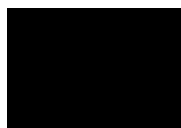
White



Silver

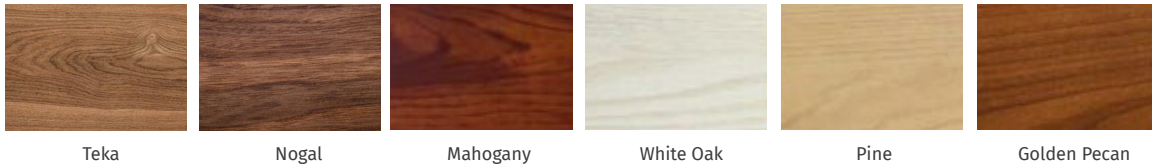


Dark Gray



Black

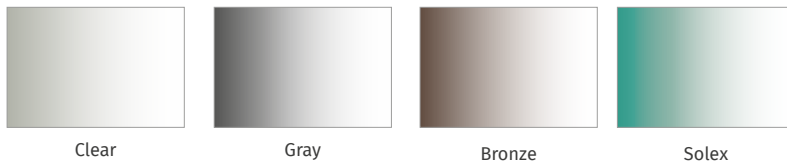
WOOD GRAIN*



***Not available as ESkin**

Tone variations may occur in wood profiles or claddings. Applies only to painted aluminum, not ESkin systems.

GLASS COLORS



Scan
ESKIN Brochure



Design.
Quality.
Luxury.

ES

The information contained herein is exclusive property of ES,
who reserves the right to modify it, including but not limited to
the designs and its specifications, without notice.

2025 ES. All rights reserved.

V - Aug 2025

