



Cambridge Teacher Development Summer Program 2026

Innovative English Teaching Practices for Today's Classroom - Secondary

Course 1: Arrive 19 July / Depart 01 Aug **Course 2:** Arrive 02 Aug / Depart 15 Aug

COURSE DESCRIPTION

If you are looking to get some new ideas, refresh your practice and deepen your understanding of learning and teaching, this course is the right choice for you.

Whether you're in your first or thirtieth year of teaching, there is plenty for you to discover, discuss and try out, all within a supportive and developmental environment led by experienced and passionate trainers.

By the end of the course you will have rediscovered the joy of getting the basics right in a language classroom, by using motivating, engaging and inspiring techniques for teaching vocabulary, grammar and skills. As our modern teaching realities are about far more than the nuts and bolts of language teaching, you will also experience other curriculum essentials, such as creativity and CLIL. In terms of your personal development journey, sessions on Contemporary English & Pronunciation are included to boost your language knowledge, use and interest, with a direct view to incorporating these ideas in your future teaching.

Throughout the course, you will have the opportunity to critically examine the evolving identity of the secondary educator and the adolescent learner in today's global landscape. By adopting a student-centered pedagogy, you will be empowered to design and deliver English lessons that align with departmental standards while remaining responsive to your students' specific needs. Significant emphasis is placed on fostering learner autonomy and building inclusive, high-trust environments where diverse adolescent voices are valued and every student is supported to excel in their language development.

On this course you will:

- Reengage with the curriculum basics, such as listening, speaking and writing skills development.
- Create, experience & share ways to inspire & motivate your classes to learn and use new language in relatable contexts.
- Tap into your creativity & discover how to let your learners' creativity flourish across the curriculum and in your classes, using age appropriate apps & technology.
- Gain a good understanding of C.L.I.L. & experience lesson cycles, tasks & activities.
- Dive into the fun and fascinating world of Contemporary English to discover what's being said now, how & why!
- Immerse yourself in a morning of pronunciation games that you can implement in your teaching
- Receive a Course Completion Certificate at our end-of-course graduation event



TIMETABLE

Week 1

	Monday	Tuesday	Wednesday	Thursday	Friday
09:00 – 10.30 ===== 11:00-12:30 (3 h)	Course Orientation Understanding secondary learners – a focus on the learning environment.	The vocabulary teaching toolbox – approaches & ideas to maximise learning & use.	Creativity in the curriculum	Pronunciation	Tune in – exploring listening skills development.
LUNCH					
13.30 – 15.00 (1.5h)	Understanding our contexts, materials & expectations.	Unmute your learners – facilitating authentic & successful speaking tasks.	Plenary Talk	Creativity in the classroom	Free Time

*****TRIP TO LONDON ON THE MIDDLE SATURDAY (£40.00)*****

Week 2

	Monday	Tuesday	Wednesday	Thursday	Friday
09:00 – 10.30 ===== 11:00-12:30 (3 h)	Confronting the grammar in the room – getting learners motivated & using structures & functions.	CLIL A taster - The what, why & how Part 1	Contemporary English	Contemporary English	Using your power for good – adapting materials & meeting your learners' needs. Graduation
13.30 – 15.00 (1.5h)	Write & not wrong! Supporting & developing writing skills.	CLIL A taster - The what, why & how	Free time	Contemporary English	Course ends



LOCATION

Your course will be held at Homerton College, part of the University of Cambridge. The college boasts spacious classrooms, extensive, beautiful grounds, a coffee lounge, and an impressive dining hall, where you will enjoy a hot lunch Monday - Friday.



COURSE TRAINERS



Françoise Votocek, Main course Tutor

Françoise has lived, studied and worked in France, New-York, China and England. She graduated from Paris-Sorbonne and Bordeaux/Michel de Montaigne Universities where she studied English Language, Literature and Civilisation. She also studied in the USA (Amherst, Ma and UCAL at Berkeley). She has been an EFL teacher since 1993, and worked at Bell Cambridge from 1997 to 2025. As a Teacher-Trainer she delivers courses in secondary methodology, language improvement for teachers, creativity in the classroom, CLIL, and TKT. Among others,



she has worked with groups of Thai, Indonesian, Chinese and Iraqi teachers, and has been a CELTA Trainer for over 20 years.



Clare Henderson, Contemporary English

Clare has been an EFL teacher since 1987 and a trainer since 1996. She worked at Bell Cambridge from 1994 to 2025. Clare has delivered teacher training in Argentina, Austria, Luxembourg and Germany and was a Cambridge Oral Examiner from 1988 to 2005. She has written IELTS listening tests and run teacher development seminars for Cambridge Assessment. In 2020, she wrote the grammar/vocabulary tests for the coursebook *Open World Advanced*. Clare wrote and used materials for PRELIM 1 and 2 with the British Council, delivering online training to Russian and Serbian teachers.



Brian Hart, Pronunciation, Course 1

Brian Hart has been working in English Language Training for over thirty years. After 10 years as a teacher and Director of Studies in Spain, he returned to work at Bell Cambridge, firstly as Academic Manager, then as teacher and teacher trainer. Brian is particularly interested in differentiation in the classroom and materials development. He is the author of the teachers' books for the *Think* and *English in Mind* series published by Cambridge University Press.



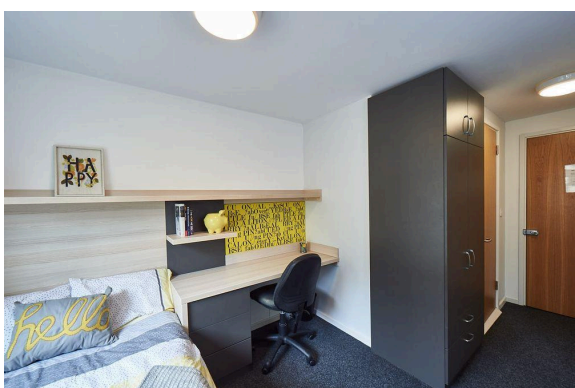
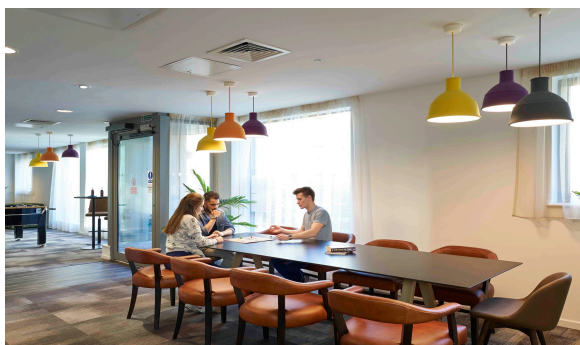
Fiona Beck, Pronunciation, Course 2

Fiona Beck began her career in London where she helped international students prepare for university entrance and develop their confidence and academic language skills required for higher education. For the past 12 years she has worked in Barcelona with secondary school learners helping them to achieve success in Cambridge exams by building clear, effective communication. She has written online content for schools in Brazil and digital material focusing on culture and language. She has a strong interest in the role of pronunciation in language learning and how targeted support can empower learners across a wide range of contexts.



ACCOMMODATION

The Railyard, Station Place, Cambridge CB1 2FP



- Homerton College: 15 minute walk
- City centre: 20 minute walk
- Closest food shop: 1 minute walk
- Train station: 3 minute walk

During your course, you will live in modern self-catering accommodation at the Railyard. The Railyard is conveniently situated by the train station and is part of a major redevelopment where you will find food shops, restaurants, bars and cafes. It is a 15-minute walk from Homerton College.

Your room will come with your own private (ensuite) bathroom with shower, a wardrobe, a desk & chair and free Wi-Fi. You will share a kitchen-diner with other course participants, which also has sofas and a TV. Additionally, the accommodation offers an App-operated laundry facility at low cost as well as a gym and large common room. There is a 24-hour reception, which is manned by security staff overnight.



THINGS TO SEE AND DO DURING YOUR COURSE

- **Join us for a free walking tour of Cambridge on the first Monday**
- **Join our trip to London by coach on the middle Saturday (£40.00)**
- Visit the Orchard Tea Rooms in Grantchester by the River Cam and indulge in one of their famous cream teas amongst their ancient fruit trees.
- Take an iconic punting trip on the River Cam, where you will see the historic colleges that the city is so famous for, and learn all about their history and quirky ways!
- Visit the Fitzwilliam Museum, one of the finest museums you will find outside London
- Can't get enough of museums? Cambridge has many others to visit where you can discover more about archeology, anthropology, zoology and even the polar regions of the earth!
- Spend an evening (or two) touring Cambridge's historic pubs! You could even join a pub quiz!
- See a Shakespeare play performed outdoors in the beautiful gardens of the Cambridge colleges.
- Wander through the lovely Botanic gardens.
- Enjoy an evening at one of the many restaurants the city has to offer, where cuisine from the UK as well as France, Italy, Spain, Greece, Turkey, Japan, Thailand, Vietnam, India, Morocco and a great many more countries is on offer.

FEES

Tuition: £940.00

Accommodation*: £750.00

Optional extras

- Day trip to London (walking tour + free time): £40.00
- Hot lunch at Homerton Monday-Friday: £200.00 (£100 per week). A choice of meat, fish or vegetarian/vegan main course. Choose 1 main, 2 sides and a dessert either hot or cold. Salad bar, bottled water and a can of drink included.

*Couples can stay in one room for a supplement of £50.00. If preferred, participants can arrange their own accommodation.



HOW TO RESERVE YOUR PLACE

- 1) Contact us at cambridgeteacherdevelopment@gmail.com stating which course and dates you would like, as well as whether you wish to book accommodation or any optional extras.
- 2) We will send you a provisional booking confirmation along with an invoice.
- 3) We will hold your place for 14 days from the date on the invoice.
- 4) Choose whether you would like to pay the full amount or just the deposit of £395 at this stage.
- 5) Once we receive your deposit (or full payment if you prefer), we will issue your booking confirmation documents.
- 6) Pay the balance by 01 June 2026.

If you decide to cancel your place before 01 June, your deposit will not normally be refunded. However, you will be able to use it against the fees for a future course with us.

If you had elected to pay the full fees in advance, you will be refunded the amount paid less the deposit.

If you decide to cancel after on or after 01 June, any fees paid for accommodation will not be refundable. Your course fees will not be refunded but you will be able to use your course fees against a future course.

For more information about us, please visit our website.

www.cambridgeteacherdevelopment.co.uk