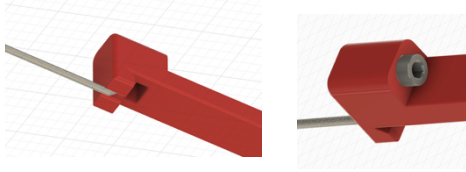
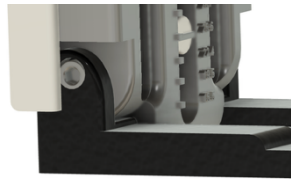
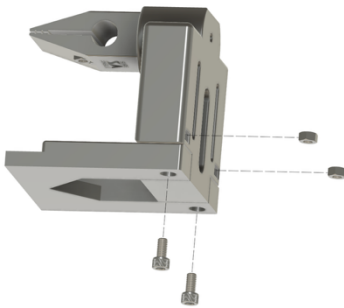


Assembly Instructions V4

1. Rotate guide rod into position and push rod into notch on hone wand. This may take some effort or a light tap. Once in place slightly tighten the m6 screw to hold the rod in place. The goal here is to have the guide rod and the hone on the same plane.

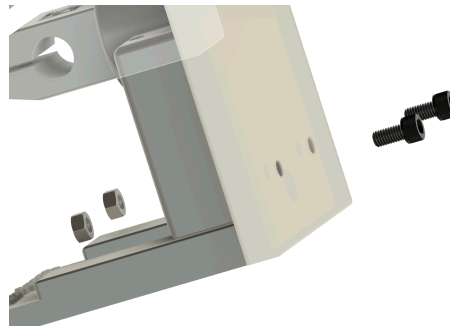


2. Base (non-folding): Insert two (2) M6x16 screws and nuts as shown and tighten.



The Folding Base has two screws which tighten for use and loosen for folding.

3. Assemble angle adjustment slider to base with two M6x16 screws and nuts hand tighten as shown.



4. Assemble Clamp with one M4x14mm screw and nut as shown. (PLEASE NOTE THIS IS THE SHORTER SCREW IN THE HARDWARE KIT). Insert the rubber grip material into the plastic clamp before assembling the screw and nut.

