

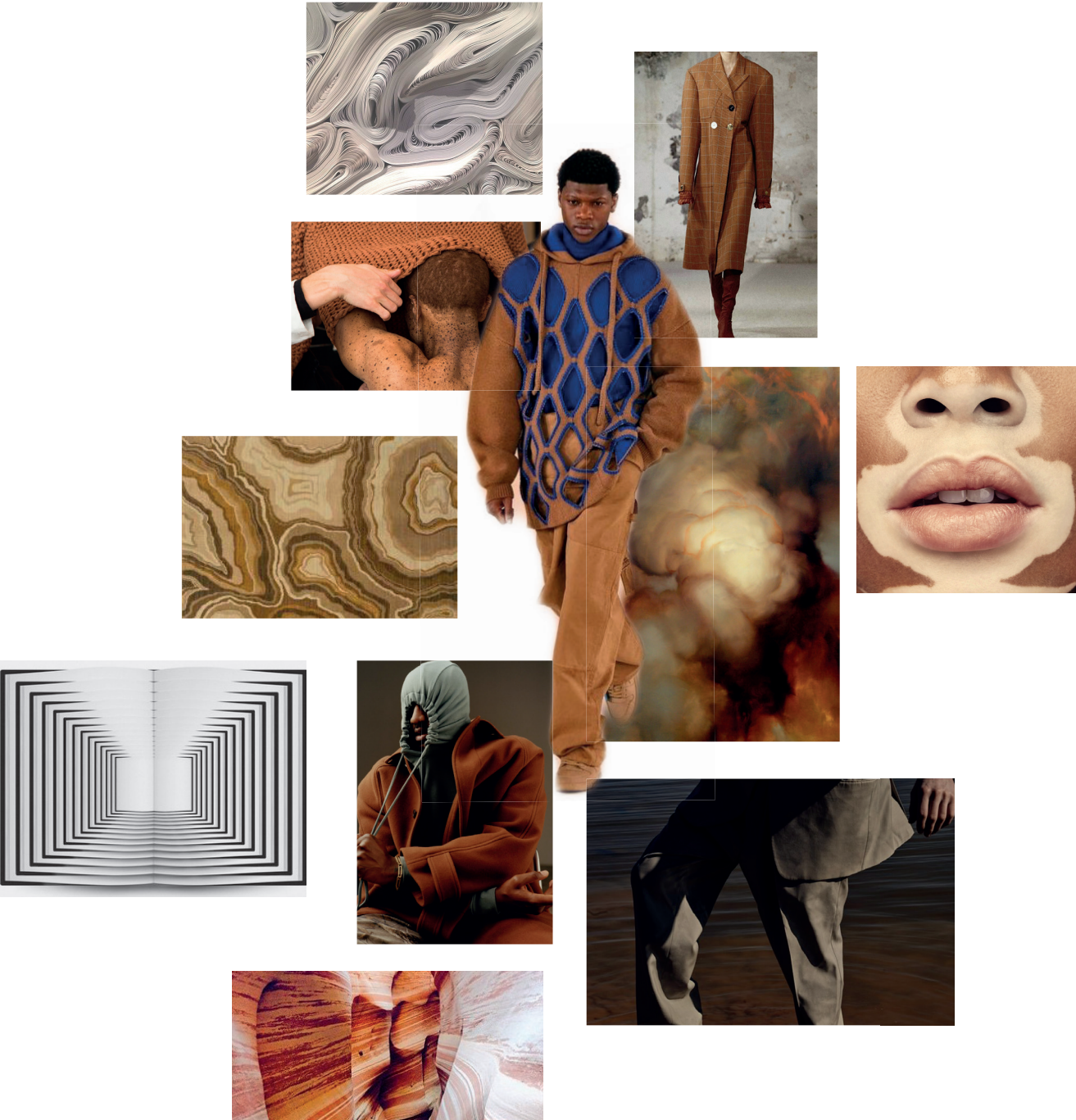


Undercover

Fall 2024

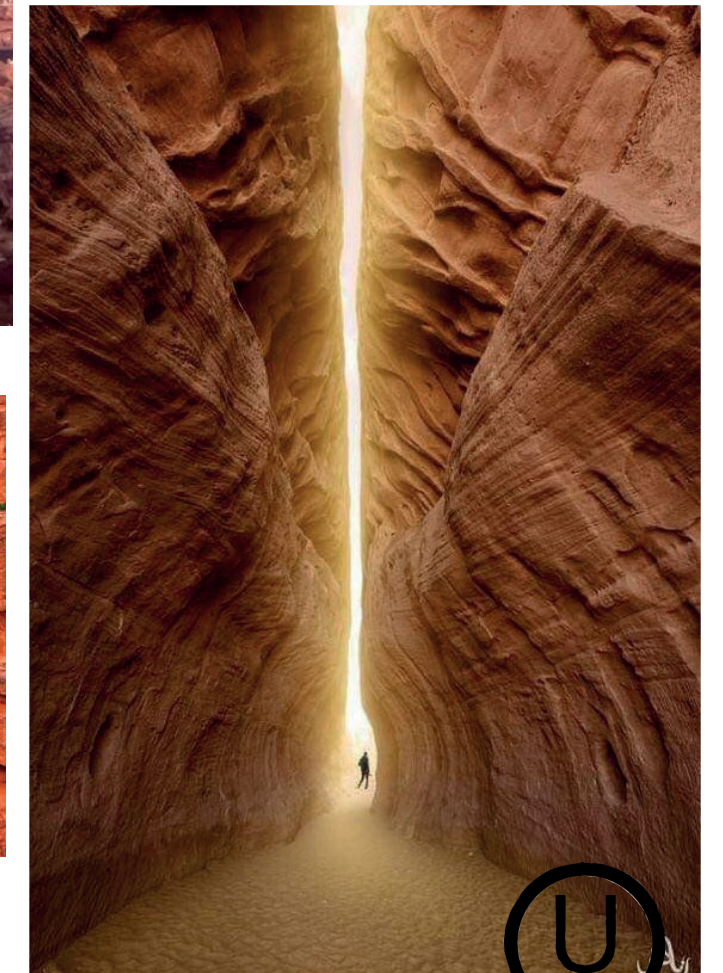
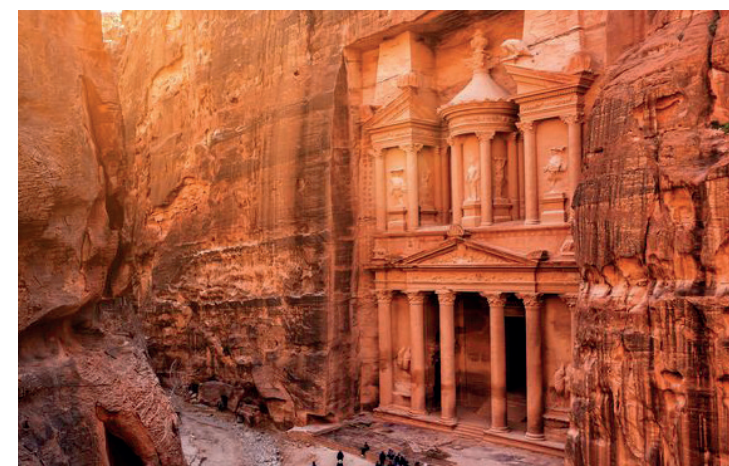
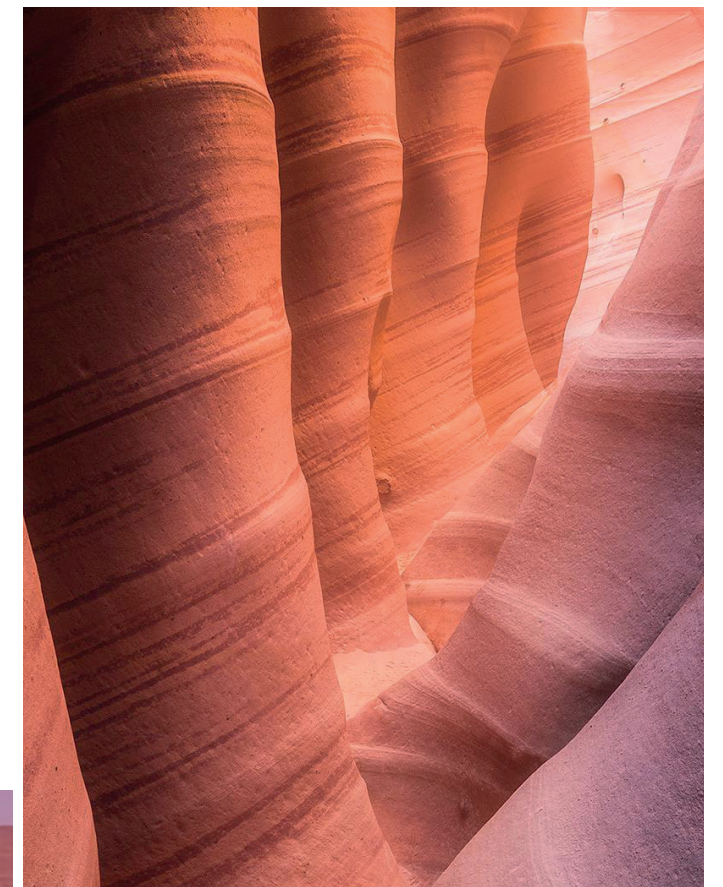


Moodboard & Cartella colori



Ispirazione

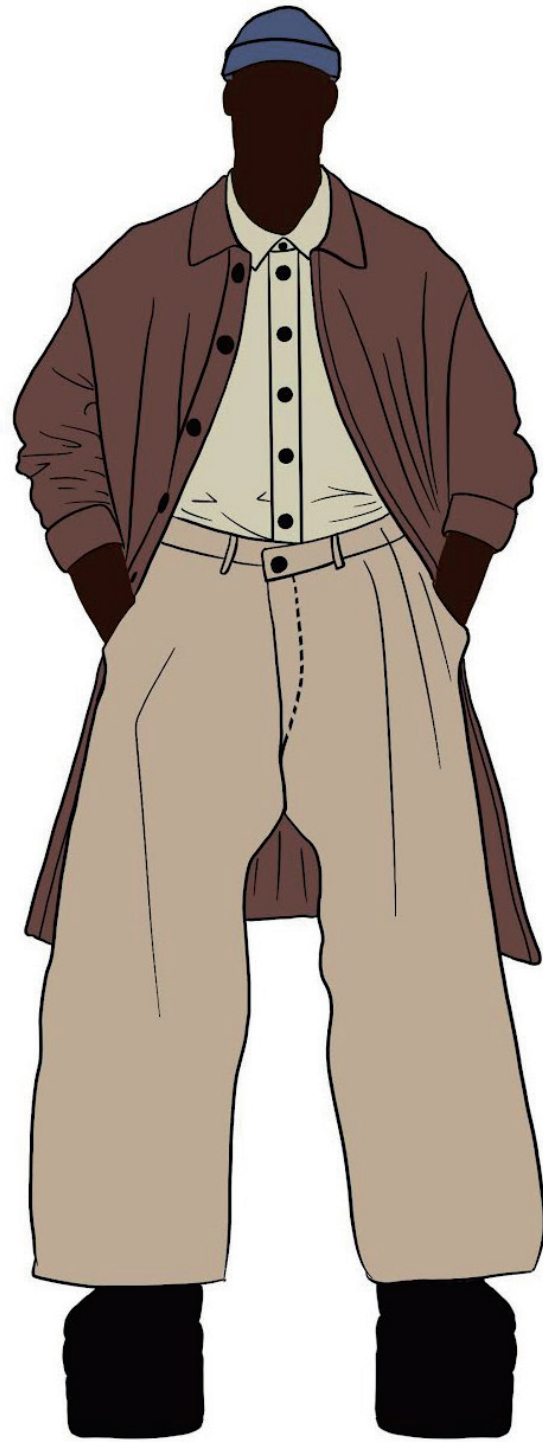
HO RICREATO UNA COLLEZIONE
FALL-WINTER UOMO CONCENTRATA
SOPRATTUTTO SUGLI SPAZIOSI E VOLUMI
FLUIDI E INDEFINITI DANDO ALLA
COLLEZIONE QUEL SENSO DI IRREGOLARITÀ,
QUALCOSA DI NON DEFINITO.
IL MIO OBIETTIVO È QUELLO DI FAR SI CHE
L'OCCHIO DELLO SPETTATORE GIOCHI CON
LE LINEE DEGLI ABITI E NELL'INTUIRE COSA
STA OSSERVANDO GUARDANDOLO MOLTO
ATTENTAMENTE, QUINDI TROVEREMO
CAPITI NON SEMPLICI MA IRREGOLARI CHE
FACCIAMO AFFASCINARE CHI LE OSSERVA.



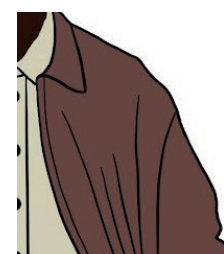
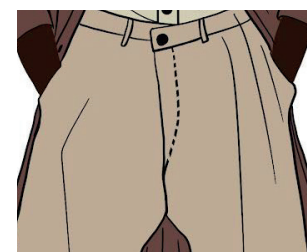
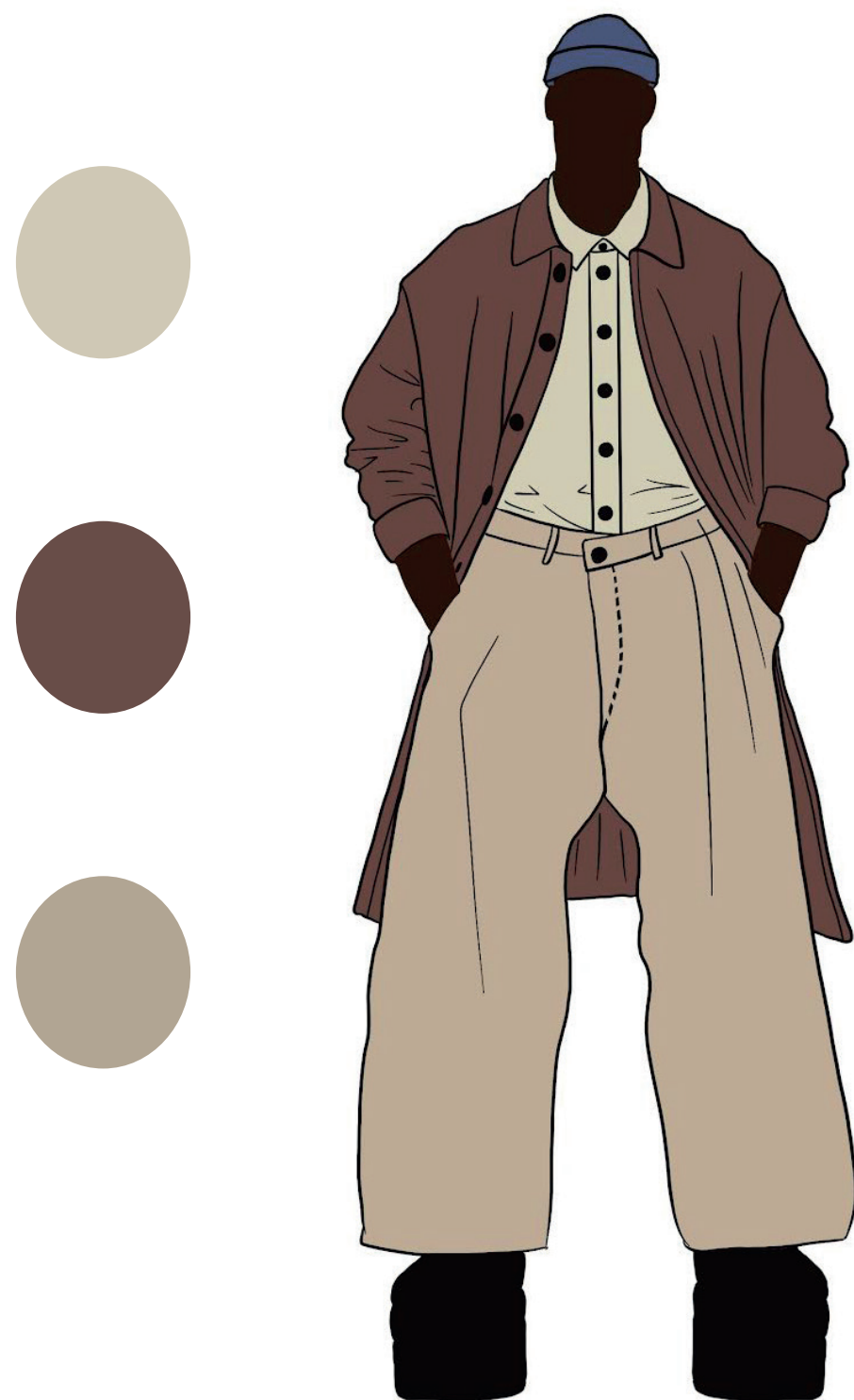
Ambientazione



I look



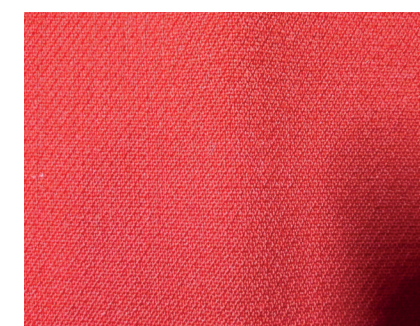
Primo look



Fresco lana
Comp: 100% WV
Armatura: tela
Tintura: In filo melange
H: 150 cm
P: 240-250 gr



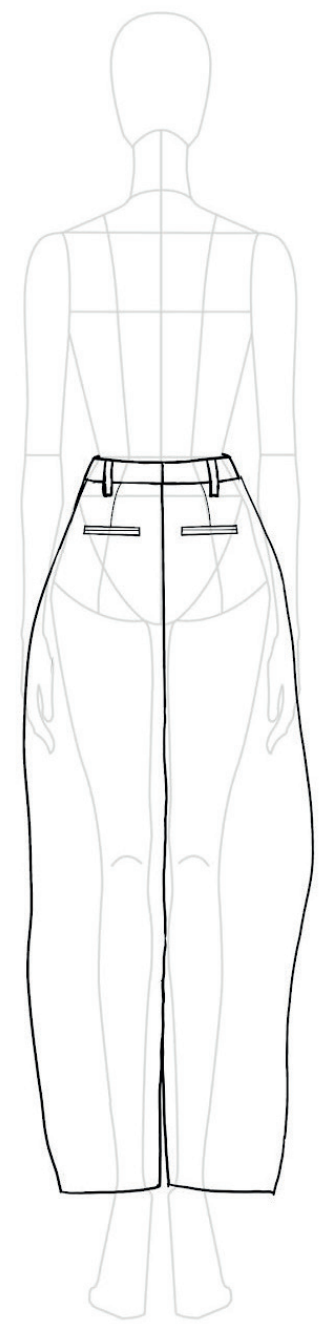
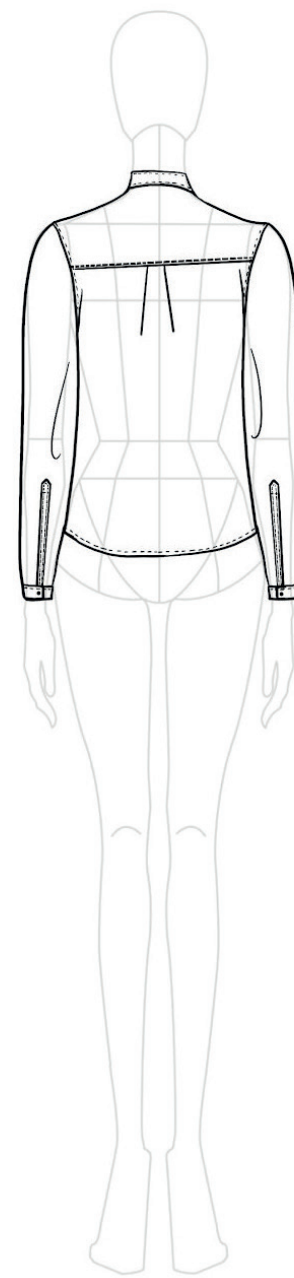
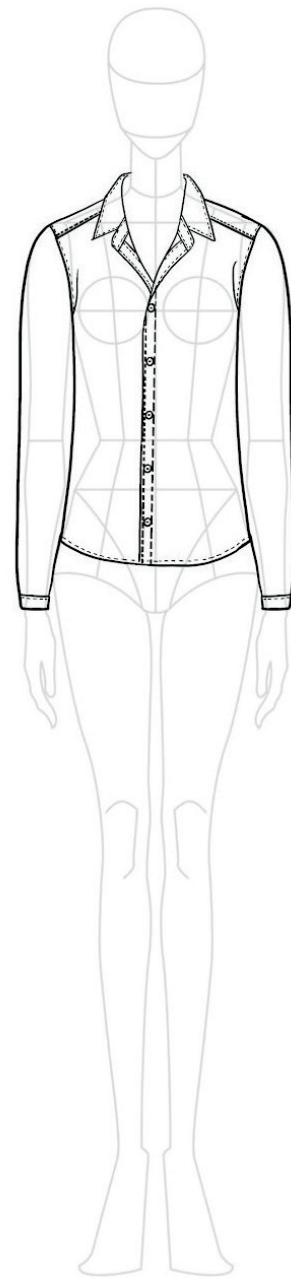
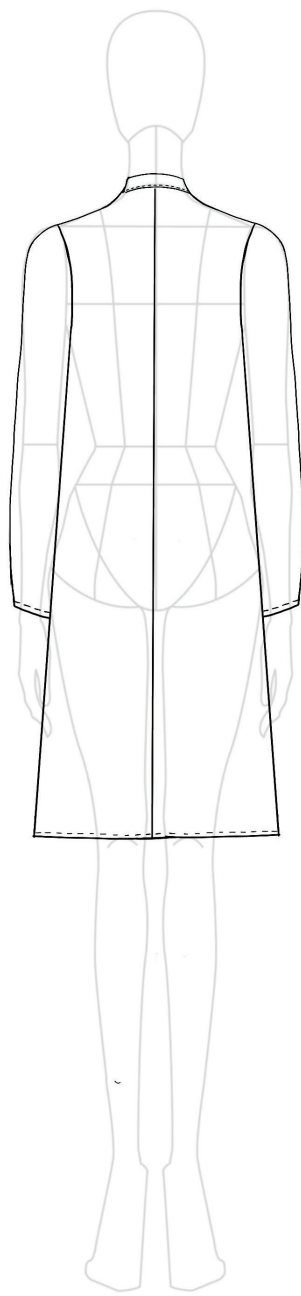
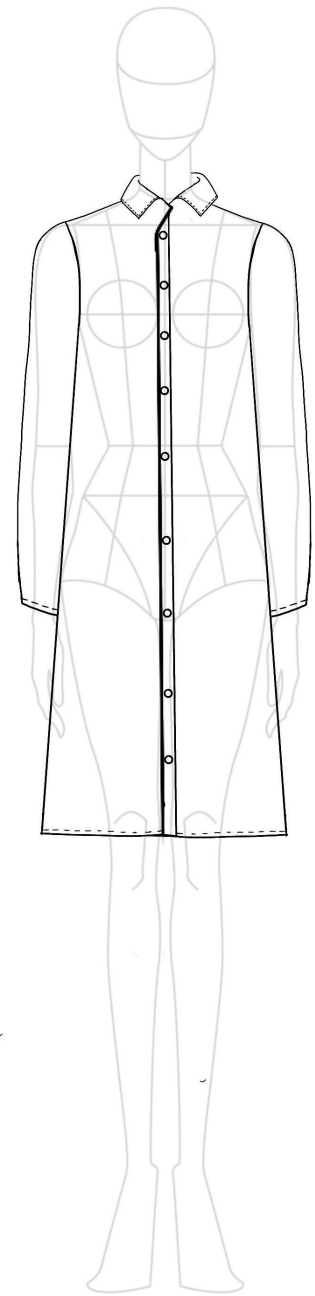
Flanella cardata
Comp: 100% WV
Armatura: tela
Tintura: In filo melange
H: 150 cm
P: 190 gr



Double face crepe
Comp: 100% WV
Armatura: Saia
Tintura: In pezza
H: 145 cm
P: 530 gr



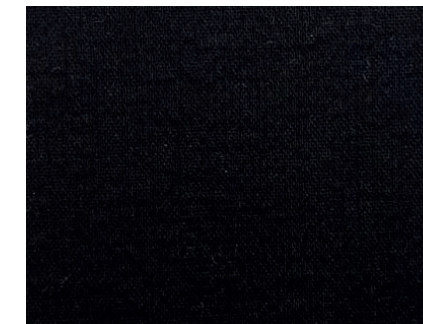
Piatti



Secondo look



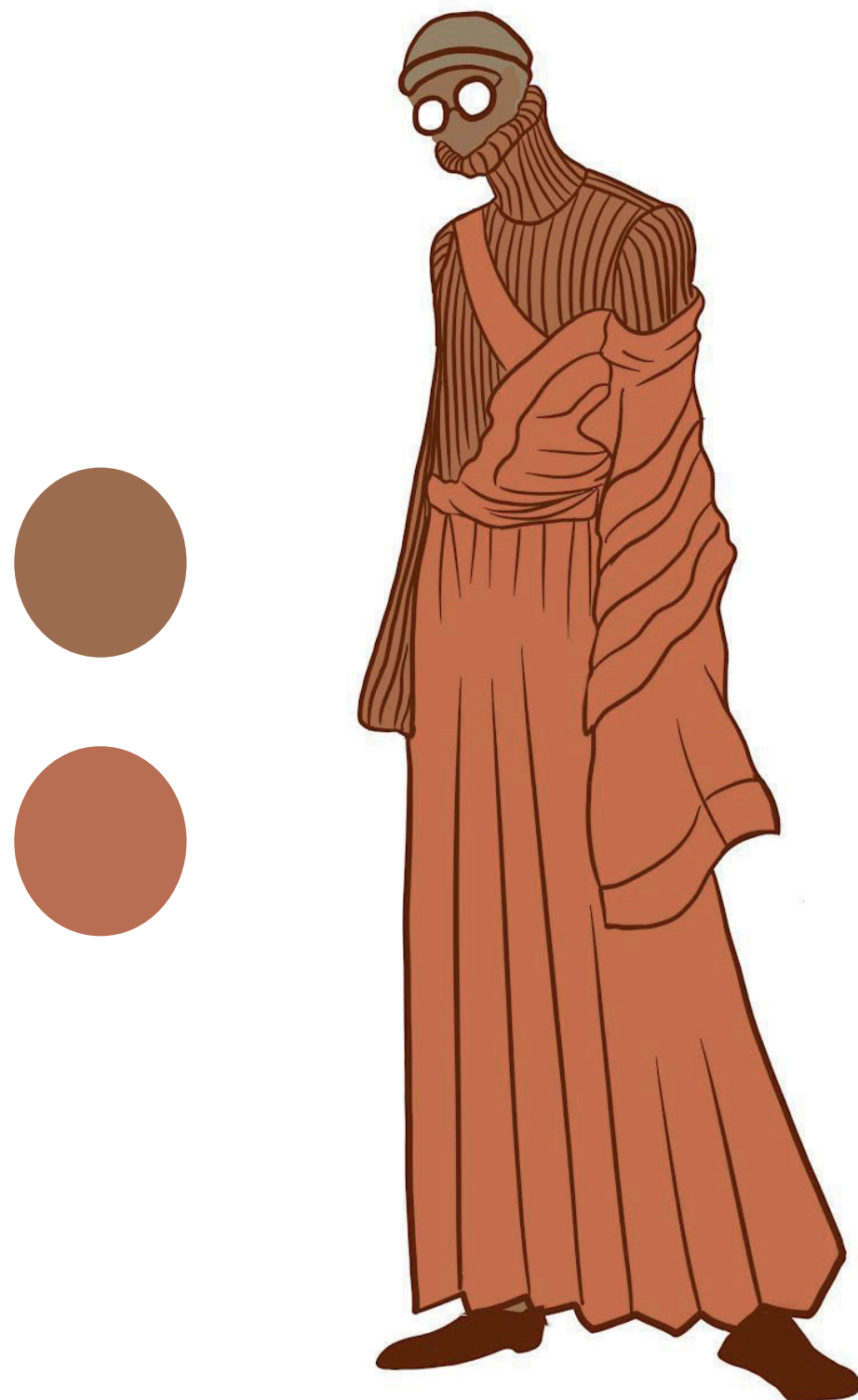
Drap
Comp: 100% WS
Armatura: Tela
Tintura: In pezza
H: 145 cm
P: 500 gr



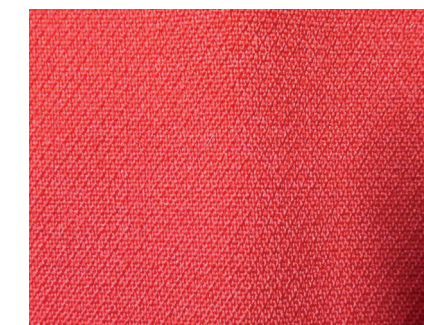
Woliton
Comp: 53%CO 26%WV
211%CU
Armatura: Saia
Tintura: In pezza
H: 148 cm
P: 186 gr



Terzo look



Fresco lana
Comp: 100% WV
Armatura: Saia
Tintura: In filo melange
H: 150 cm
P: 240-250 gr



Double face
Comp: 100% WV
Armatura: Saia
Tintura: In pezza
H: 145 cm
P: 530 gr

