

Lets get started.

To begin, you must boot the USB Crypto Miner

1. Turn off your PC
2. Insert the USB
3. Turn on your PC
4. Access the Boot Menu → →

>The loading screen moves fast at start-up. Different computers have different screens. So watch carefully

Pressing F12 at the loading screen is a common way to access the boot options.

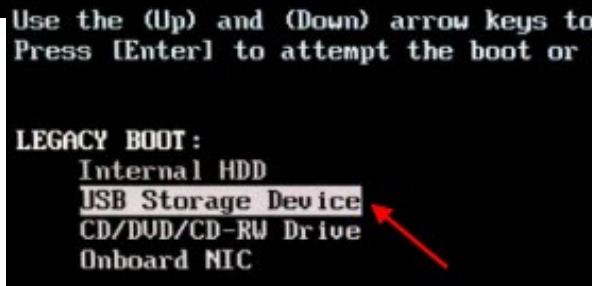
Dell "loading screen"



5. Boot to USB

Once the boot menu is up, You'll have a few options.

Choose USB in the device options →
KMP-DEX, v1 & v2 boot via USB



Menu screens will vary depending on your system
Some may require alternative steps

If you are having trouble navigating
your boot options: Refer to Page 3, Boot Guide

6. Enter Live System

FOR KMPv2

enter *Live system (kmpv2)*

FOR KMPv1

enter *Live system (kmpv1)*

FOR KMP-DEX

enter *Live system (kmp-dex)*

Need help? Message us!



Things to consider

- > The Konsole series are fully customized operating systems built specifically to mine crypto. Developed and maintained by Stackhouse*

KMP does not install onto your hard drive. It runs from memory, no hard drive needed.

- > Directly available in RAM, cuts out the middle man” aka the Hard Drive. This results in quicker system access.
- > This text-based environment is minimal and less taxing on computer resources. It makes for the perfect, Miner Environment.

You can easily clone KMP for continued personal use on a new usb drive if needed.

- > Stackhouse* commits to updating every release after successful testing is complete.
Every update is an upgrade. . Either in stability, security or performance.
“Major updates” imply all of the above.

Booting in Legacy mode offers the best CPU performance.
All Konsole Series Operating systems can boot UEFI or Legacy.
servers can also be used.

Supported Operating Systems by Variant

KMP-DEX	Konsole Zero
KMP.v1	Konsole One
KMP.v2	Konsole Two

KMP-DEX is very close in efficiency to v1, but has limited features.
Our computer savvy customers are able to feel the differences.

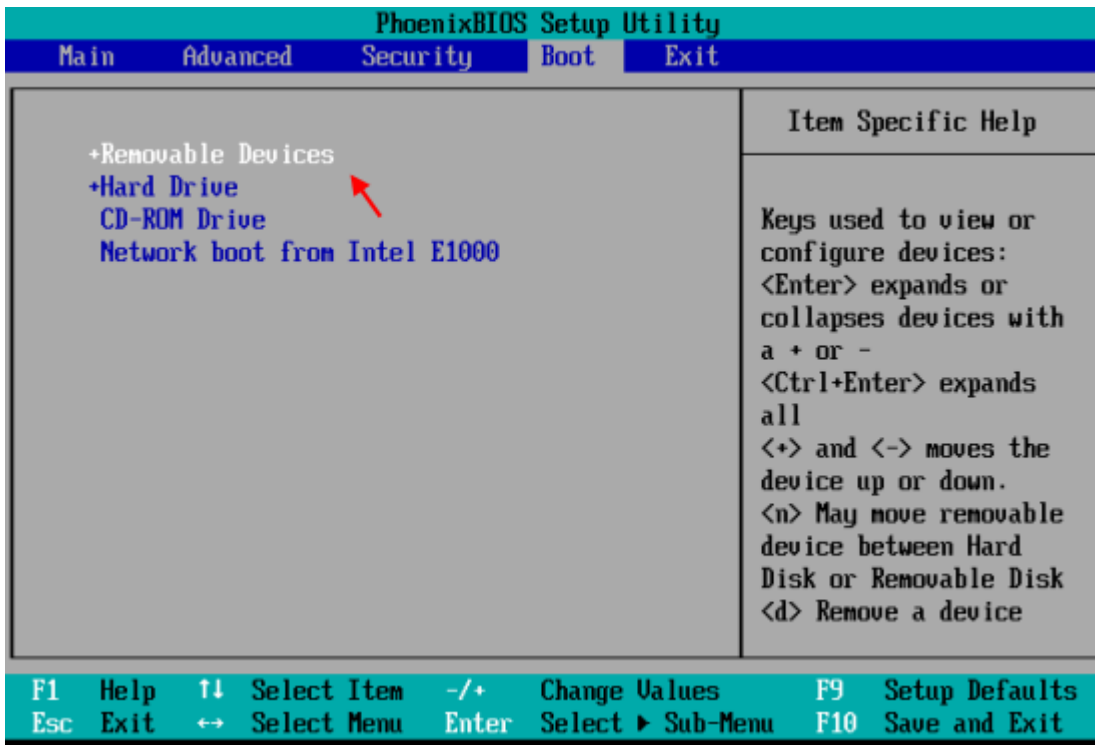
Boot Guide: In order to boot to USB, The option must be made accessible.

If your system does not show the USB option by default, you will have to change the defaults in BIOS
below is a reference on how to access your "BIOS"

Manufacturer	BIOS Keyboard Entry	Older/Other
ACER	DEL or F12 or F2	F1 or Ctrl+Alt+Esc
ASUS	F2 or DEL or ESC or F10	Esc
COMPAQ	F10	F1 or F2 or F10 or Del
DELL	F2 or Ctrl+Alt+E or DEL	Fn+Esc or Fn+F1
HP	F1 or F10 or F11 or F12	F2 or Esc or Esc+F10
LENOVO	F1 or F2 or Novo button"	Ctrl+Alt+F3 or Ctrl+Alt+Ins
--	--	or Fn+F1
IBM	F1	F2
TOSHIBA	F1 or ESC	F12
SAMSUNG	F2	--
SHARP	F2 or DEL	--
Windows Surface Pro	Turn off Surface Pro & Hold Volume Up + Power Button	

*****when you reach your BIOS, you can change your default settings to include USB as a boot option*****

Photo reference below-->



enter the keyboard combo or single key at the "loading" screen to access BIOS
 --when you complete your changes. Save your Changes.
 After completion, you may proceed with the steps on **Page1**