



INITIATIVE SAVE

SUSTAINABLE APPROACHES FOR VITAL ENERGY!

INITIATIVE SAVE.

SUSTAINABLE APPROACHES FOR VITAL ENERGY!

- SAVE optimizes energy management through a comprehensive sustainability framework that supports carbon credit generation, contributing to a safe and sustainable future.
- SAVE utilizes a cloud-based artificial intelligence (AI) platform; each load connects to the network via IoT devices, allowing the AI to enhance energy consumption systems and facilitate efficient real-time energy management.
- SAVE provides extensive monitoring and control of energy usage across the connected system, suggesting best practices to operators for proactive decision-making that improves the overall efficiency of the system.
- SAVE is flexible and suitable for large-scale energy consumers, regardless of their sector. It optimizes energy resources, reduces energy waste, and prevents equipment failures, resulting in significant economic and environmental benefits.
- SAVE features an affordable monitoring system that tracks a wide range of energy metrics—electricity, gas, and more—in real time, identifying inefficiencies and recommending best practices.
- SAVE surpasses existing systems by providing clear and actionable insights based on each piece of equipment, integrating with the overall system's "behavior." Its installation is personalized, quick, cost-effective, and straightforward.
- SAVE also facilitates real-time monitoring, reporting, and verification of GHG emissions across Scope 1, 2, and 3, contributing to positive environmental outcomes and greater operational efficiency.
- SAVE is a holistic solution that not only optimizes energy consumption but also promotes a sustainability framework that reduces operational risks, generates substantial savings, and enables the acquisition of carbon credits.

Join the Initiative SAVE and help drive the transition to a more sustainable future!

UNDERSTANDING SAVE'S PURPOSE!

0. THE PROBLEM OF INEFFICIENCY IN ENERGY RESOURCE USE.

Inefficiency in the use of energy resources has several significant consequences, including increased operating costs, waste of valuable resources, negative environmental impact, risk of equipment failure, higher maintenance demands, and loss of competitiveness. Contributing factors to this situation include obsolete equipment, leaks, and oversized systems, namely:



- Transformers: 5-10% loss due to outdated designs.
- Compressors: 15-35% waste from leaks and excessive use.
- Oversized Systems: 15-30% waste due to inefficiency.
- Throttle Valves: 10-20% energy loss from over-pumping.
- Unnecessary Equipment: 5-10% waste related to idle use.
- Capacitor Banks: 10-15% loss if not optimized.

Why Can't We Simply Avoid It?

The solution seems straightforward; however, various challenges hinder effective and definitive action:

- Data Issues: Energy use varies between equipment and fluctuates due to multiple factors, making monitoring difficult.
- Lack of Experts: There is a shortage of trained professionals to analyze data and implement solutions.

Addressing this problem involves not only technological and operational improvements but also economic and environmental considerations.

Reducing energy waste can lead to significant savings and a positive impact on the environment.

INITIATIVE SAVE.

SUSTAINABLE APPROACHES FOR VITAL ENERGY!

1. THE POWER OF SIMPLE AI SUSTAINABLE SOLUTIONS!

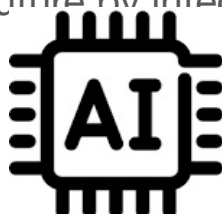
Although it is possible to pursue decarbonization without a comprehensive sustainability approach or an adequate strategy, such an approach may lack a solid foundation and overlook critical aspects.

At Green Cross United Kingdom (G+UK), we ensure integrity in the generation of carbon credits by ensuring they are verifiable, demonstrate additionality, and provide co-benefits, all in accordance with international standards. Our systematic commitment to sustainability promotes a responsible and transparent carbon market.



2. EMBRACING SUSTAINABILITY IN ENERGY MANAGEMENT.

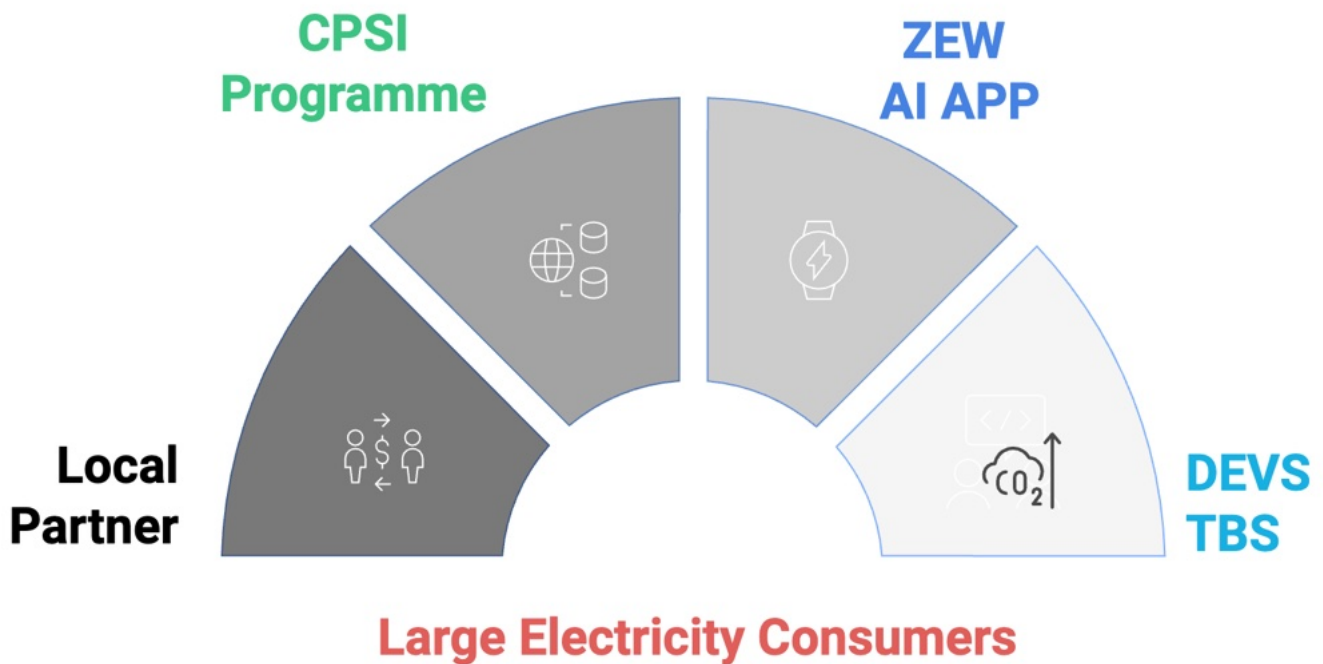
In today's world, managing energy within a sustainability framework is essential, not optional. The SAVE Initiative empowers organizations to create a safe and sustainable future by integrating smart energy management solutions.



INITIATIVE SAVE.

SUSTAINABLE APPROACHES FOR VITAL ENERGY!

3. SUSTAINABLE FRAMEWORK: THE WHOLE IS > THE SUM OF ITS PARTS!



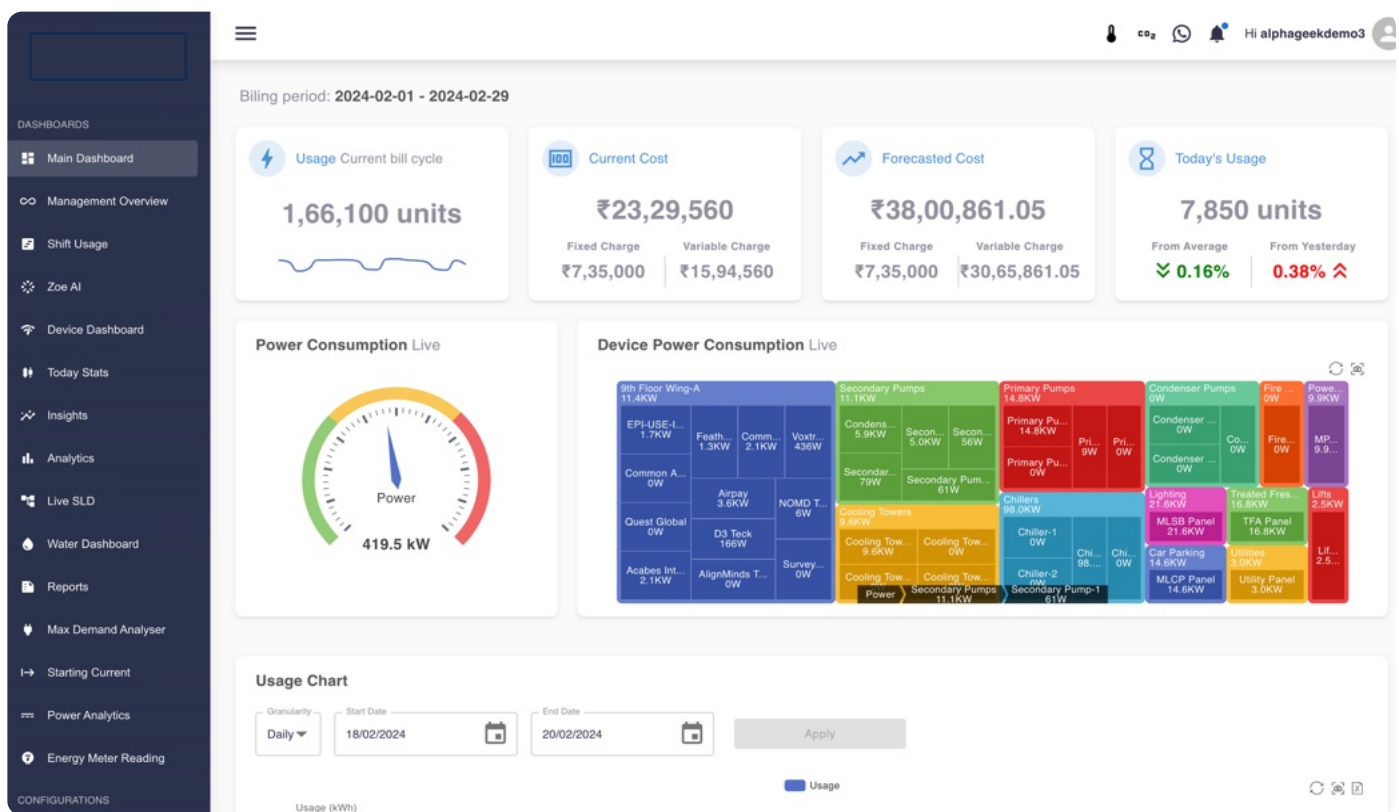
- A. Local Partner: they are responsible for commercial management and play a crucial role in the on-ground implementation of projects. They primarily install IoT devices at charging stations, assist with network configuration for the AI app, and collaborate on the carbon credit program.
- B. CPSI: the process is implemented virtually with assistance from the local partner, offering a comprehensive sustainability framework designed to evaluate the project's sustainability and propose a roadmap for overall sustainability.
- C. ZEW: is an innovative, disruptive, and reliable application in the field of AI (artificial intelligence), specializing in energy efficiency, originating from NTPC in India.
- D. DEVS: is a leader in using technology for the comprehensive development of carbon projects, adopting a programmatic approach. With its blockchain origins, its solution eliminates risks and complexities, allowing organizations to easily progress from project ideation to credit monetization.

INITIATIVE SAVE.

SUSTAINABLE APPROACHES FOR VITAL ENERGY!

4. 360° ENERGY MANAGEMENT SOLUTION.

SAVE is an innovative initiative that combines cloud-based artificial intelligence with IoT technology to optimize energy consumption management. Through advanced data analysis algorithms, this solution enables efficient, real-time administration of energy systems. This not only enhances decision-making but also boosts operational efficiency by detecting consumption patterns and suggesting proactive adjustments.



Cloud-Based AI Integration: With SAVE, both the performance of individual devices and the overall efficiency of the system are analysed. This comprehensive perspective allows for a better understanding of how each device impacts the overall operation, facilitating the identification of interactions and synergies that optimize energy efficiency across the entire infrastructure.

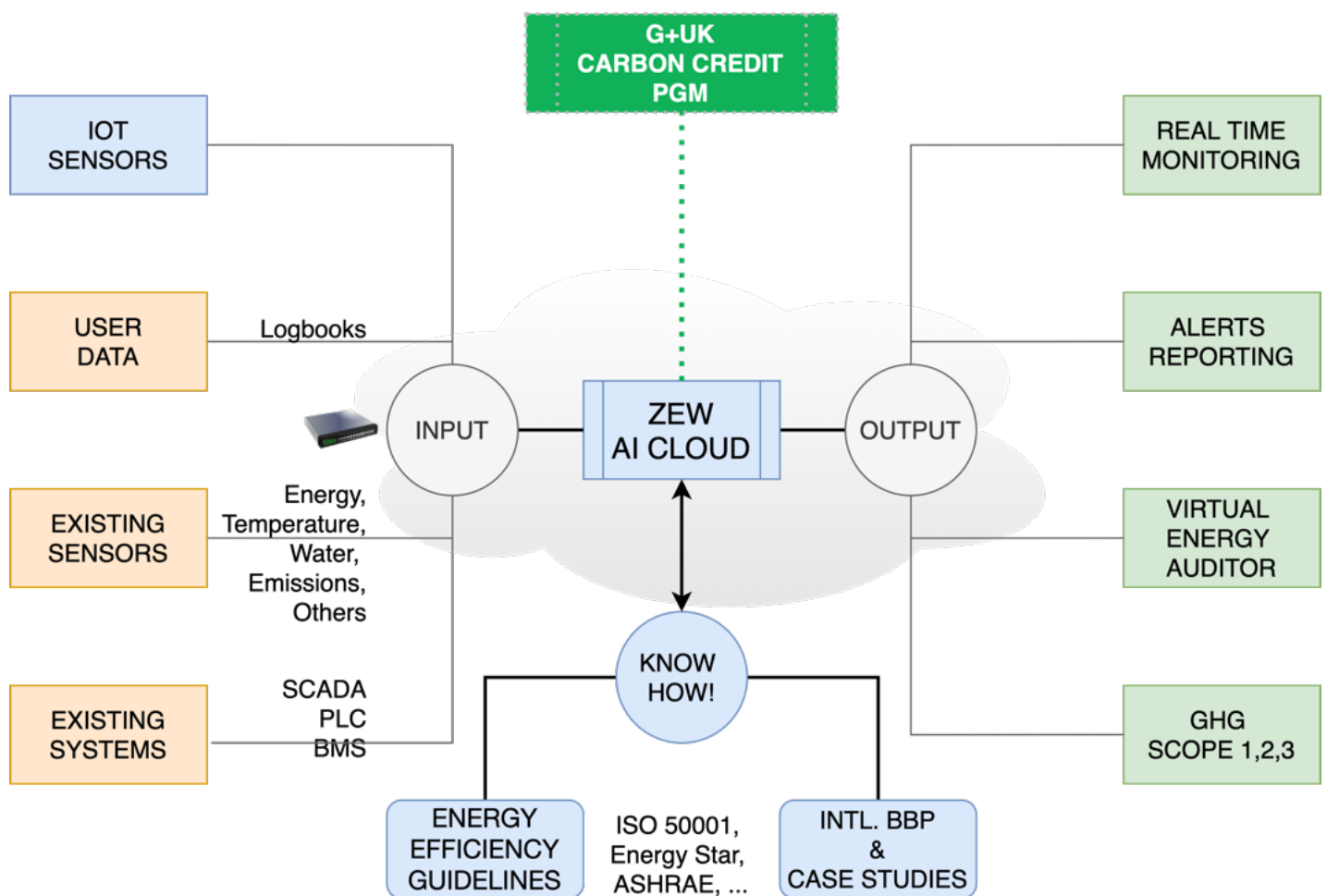
Real-Time Monitoring and Control: SAVE empowers organizations to holistically monitor and manage their energy resources. The system evaluates multiple indicators, such as electricity and gas consumption, enabling immediate detection of inefficiencies and improvement of energy performance.

INITIATIVE SAVE.

SUSTAINABLE APPROACHES FOR VITAL ENERGY!

4. 360° ENERGY MANAGEMENT SOLUTION (CONT.).

- ZEW platform enables real-time data collection from various sources, monitoring critical variables like electricity consumption, pressure, temperature, vibration, and water. This data is sent to AI for tailored insights and real-time analysis, identifying patterns while leveraging cloud processing for large volumes of information.



- ZEW platform generates alerts and reports to monitor energy performance and sustainability, supporting continuous improvement. It features 24/7 virtual operators for constant monitoring, enabling the anticipation of critical events and conducting virtual energy audits to evaluate consumption and identify improvement opportunities. their environmental impact through informed decision-making.
- A dedicated development team is on hand to customize the platform according to user needs. The system provides reports on greenhouse gas (GHG) emissions, assisting companies in meeting their environmental objectives.

INITIATIVE SAVE.

SUSTAINABLE APPROACHES FOR VITAL ENERGY!

5. KEY FEATURES OF THE ZEW AI APP.

- a. **Advanced Data Analysis:** Implements machine learning algorithms and predictive analytics to process large volumes of data, generating precise and relevant insights for informed decision-making.



- b. **Optimized User Interface:** Designed with usability and user experience (UX) principles, the interface allows for smooth navigation and efficient access to critical functionalities.
- c. **Real-Time Monitoring:** Provides a real-time supervision system that tracks key metrics and operational parameters, ensuring continuous visibility into system performance.
- d. **Customizable Configurations:** Allows users to adjust metrics, thresholds, and notification alerts, adapting to operational specifications and business requirements.
- e. **Integration with IoT Devices:** Facilitates communication with a variety of IoT devices, enabling real-time data collection and more holistic resource management.
- f. **Automated Reporting Generation:** Offers advanced reporting capabilities that enable the creation of detailed reports and graphical visualizations, facilitating in-depth data analysis.
- g. **Cross-Platform Compatibility:** Designed to operate across multiple environments, the application can run on both mobile and desktop devices, ensuring accessibility and flexibility for users.

INITIATIVE SAVE.

SUSTAINABLE APPROACHES FOR VITAL ENERGY!

6. BENEFITS: QUANTIFIABLE OUTCOMES FOR EVERY FACILITY.

- a. Proactive Prevention: Optimized energy management minimizes the risks of costly failures, generating both economic and socio-environmental benefits.
- b. Affordable Monitoring: By offering an economical solution that provides real-time data, SAVE helps identify inefficiencies and ensures compliance with best practices, leading to improved operational efficiency and reduced energy expenses.
- c. Seamless Integration: By providing actionable insights accessible to all levels of the organization, SAVE guarantees a straightforward installation process that allows for easy adaptation within existing infrastructures, minimizing disruption.



- **ACHIEVE UP TO 30% SAVINGS IN ENERGY COSTS**
- **ROI IN AS LITTLE AS 7 MONTHS**

- d. Tailored Solutions: Recognizing that every organization has distinct needs, SAVE offers customized approaches designed to maximize effectiveness and impact in energy management for each facility.
- e. Local Focus: SAVE is implemented in the local language, uses region-specific IoT devices, and collaborates with local technicians. This approach ensures that the system integrates effectively into the specific environment of each facility, facilitating understanding and usage while supporting the development of the local technical community.

INITIATIVE SAVE.

SUSTAINABLE APPROACHES FOR VITAL ENERGY!

7. LEVERAGING INVESTMENT BY REDUCING COSTS: AI WITH CARBON CREDITS.

- a. Improving Efficiency Through Real-Time GHG Management: ZEW APP enables real-time monitoring, reporting, and verification of greenhouse gas (GHG) emissions in Scopes 1, 2, and 3, thereby enhancing operational efficiency. This approach optimizes processes and supports sustainability goals, allowing organizations to manage their emissions accurately.
- b. Optimizing Energy and Reducing Risks: By optimizing energy consumption, SAVE helps establish a comprehensive sustainability framework. The generation of carbon credits leverages investment in the APP, promotes shared responsibility, and closes investment gaps in innovative projects for climate action.
- c. Simplifying Operational Efficiency: The simplification of monitoring and reporting allows for smarter management. Operators will be notified to optimize the energy operation of the system, enabling organizations to focus on their core mission while ensuring efficient energy use and reducing operational costs.
- d. Preparing for the Future: Transitioning to smart and sustainable facilities is essential for addressing evolving environmental challenges and regulations. By utilizing data to guide decisions, all teams within the organization can collaborate effectively, ensuring they work together toward common sustainability goals.
- e. Innovating and Building Market Trust: The use of AI and blockchain ensures accuracy and transparency in technology-based carbon credit generation projects, fostering market trust and establishing a secure environment for investment.
- f. Sustainable Value: Having the leader in technology-based carbon credits, along with all the necessary resources to implement regional and sectoral carbon credit programs, is essential to validate the benefits of a comprehensive approach to project sustainability.



ABOUT GREEN CROSS INTL.

- Green Cross is a renowned Non-Governmental Organization (NGO), founded in 1993 by Nobel Peace Prize winner Mikhail Gorbachev. With over 30 years of experience and a presence across more than 25 countries, Green Cross has established itself as a leader in promoting Sustainable Development to ensure a Secure and Sustainable future.



Mikhail S. Gorbachev
Founder President of GCI

- The organization focuses on planning and implementing programmes and initiatives that cultivate a sense of global interdependence and shared responsibility. As an Organization with Consultative and Observer status at the United Nations, Green Cross operates as a non-profit entity, ensuring that all its actions are directed towards benefiting communities and the environment.
- Green Cross serves as an independent advisor, committed to assisting, advising, facilitating, integrating, and auditing sustainability practices. Its comprehensive approach guarantees that each project not only meets high-quality standards but also generates a positive impact.
- Green Cross adopts a holistic approach to project management, ensuring that all facets are executed responsibly and effectively. By conducting rigorous verifications aligned with international standards and/or methodologies such as LEED, WaterSense, EarthCheck, GHG Protocol, ISO 14064, and EnergyStar, the organization underscores its commitment to sustainability as a core value rather than a mere pathway to certification.

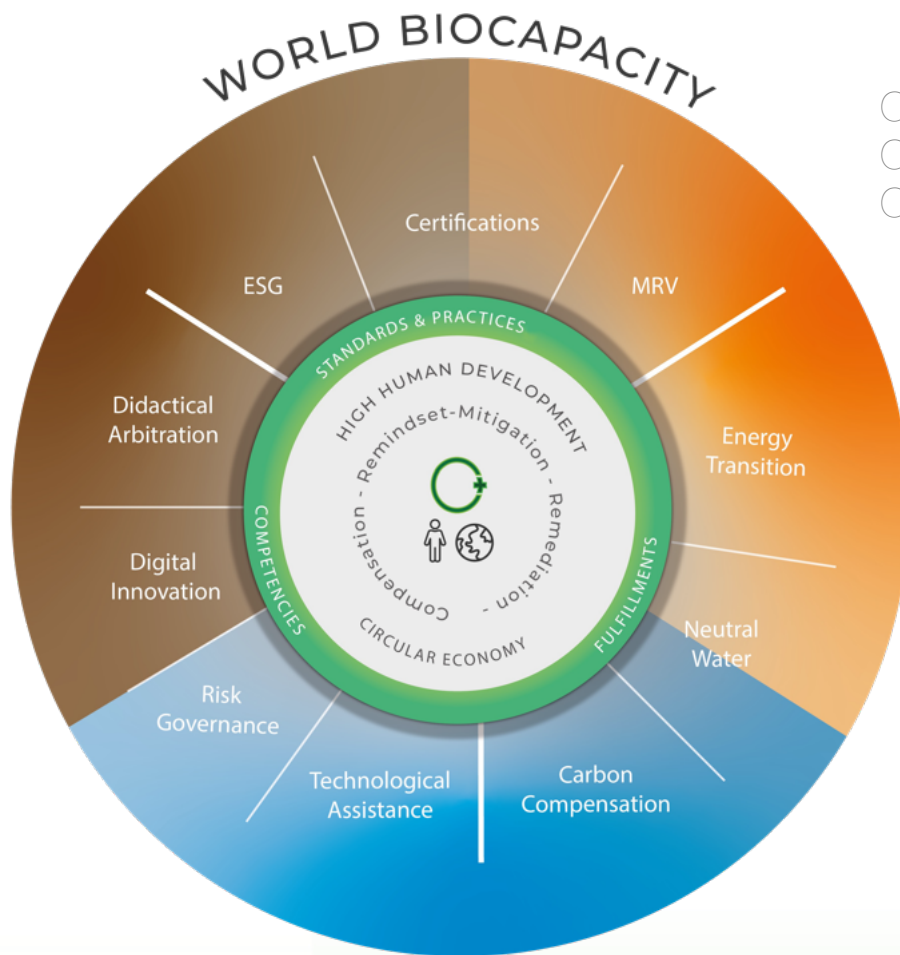


- This philosophy enhances its reputation and fosters recognition among diverse stakeholders and the wider community. Attaining the Green Cross seal signifies a dedication to exemplary sustainability practices, highlighting the ethical imperative of responsible stewardship in every initiative.

GREEN CROSS UK'S: PROGRAMMES & DNA.

CPRA:
Climate Positive
Regenerative
Agricultural

CPCM:
Climate Positive
Climate Mining



CPSI: Climate Positive
Sustainable Infrastructure



- CPCM Programme: Natural Mining. Urban Mining. Mining under Social and Environmental license.



- CPRA Programme: Regenerative Agricultural Certification and Practises (end-to-end). Green Finance.



- CPSI Programme: Sustainable Infrastructure Recognition and Certification (end-to-end). Green Finance.



- Green Crossing Programme: Oceanic Odyssey's mission to peacebuilding and sustainability spread.



**LET'S DO SOMETHING INCREDIBLE TOGETHER FOR THE SOCIETY
AND THE PLANET, STARTING BY STAYING IN TOUCH:**

[JOINUS@GREEN-CROSS.ORG.UK](mailto:joinus@green-cross.org.uk)

Copyright Notice: All rights reserved. All material appearing herein ("content") is protected by copyright under the copyright laws of the United Kingdom and is the property of the Green-Cross Committee UK (GC-UK) or the party credited as the provider of the content. You may not copy, reproduce, distribute, publish, display, perform, modify, create derivative works from, transmit, or in any way exploit such content, nor may you distribute any portion of this content over any network, including a local area network. , sell or offer for sale, or use such content to build any type of database. You may not alter or remove any copyright or other notice from copies of the content of the GC-UK document. Copying or storing any content, except as provided above, is expressly prohibited without the prior written permission of GC-UK or the copyright holder identified in the copyright notice of the individual content. For permission to use the content, please contact joinus@green-cross.org.uk

Disclaimer: The summary of terms is for discussion purposes only. Nothing contained herein is intended to constitute or evidence a binding offer or agreement between the parties other than as expressly set forth herein, but rather forms the general basis for discussion relating to such transaction and the general basis on which the parties are prepared to continue negotiations. and due diligence. No obligation shall arise between the parties unless and until all necessary consents and approvals have been obtained and mutually satisfactory definitive written agreements have been prepared and executed.

Green Cross Intl.Network: We invite you to verify whether there is a Green Cross National Organization (GCNO) in your country. If one exists, we encourage you to contact them to express your interest in participating in this programme or initiative. Should Green Cross United Kingdom identify a GCNO in the vicinity of an interested party, it will reach out to facilitate you a coordinated and joint response.

You can find more information at <https://www.gcintl.org/who-we-are#OurNetwork>