

1. Turn off your PC
2. Insert the USB/DVD
3. Turn on your PC
4. Access the Boot Menu
5. Boot to USB or DVD
6. Enter Live System

Booting the USB Miner/DISC Miner

Use your keyboard

Lets get started.

To begin, you must boot the USB/DVD Crypto Miner

1. Turn off your PC
2. Insert the USB/DVD
3. Turn on your PC
4. Access the Boot Menu → →

>The loading screen moves fast at start-up. Different computers have different screens. So watch carefully

Pressing F12 at the loading screen is a common way to access the boot options.

Dell "loading screen"



5. Boot to USB or CD/DVD

Once the boot menu is up,
You'll have a few options.

Choose USB in the device options →
KMPv1 & KMPv2 boot via USB

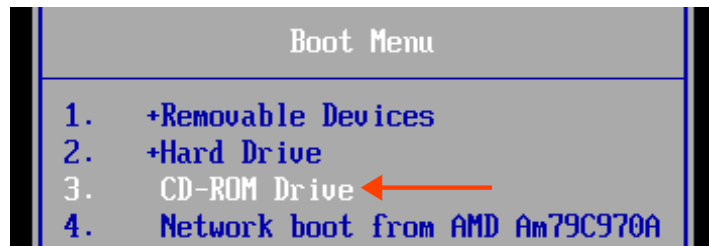
OR

Choose CD/DVD in the device options →
KMP-D boots via CD/DVD

Use the (Up) and (Down) arrow keys to
Press [Enter] to attempt the boot or

LEGACY BOOT :
Internal HDD
USB Storage Device
CD/DVD/CD-RW Drive
Onboard NIC

USB/DVD device options



Menu screens will vary depending on your system
Some may require alternative steps

If you are having trouble navigating
your boot options: Refer to Page 3-4, Boot Guide

KMP Tutorial & Troubleshooting

1. Turn off your PC
2. Insert the USB/DVD
3. Turn on your PC
4. Access the Boot Menu
5. Boot to USB/DVD
6. Enter Live System

Booting the USB Miner

6. Enter Live System

FOR KMPv2
enter *Live system (kmpv2)*

FOR KMPv1
enter *Live system (kmpv1)*

FOR KMP-D
enter *Live system (kmpd)*

Need help? Message us!



Supported Operating Systems by Variant

KMP-D	Konsole Zero
KMP.v1	Konsole One
KMP.v2	Konsole Two

Things to consider

>>> Konsole Zero, Konsole One and Konsole Two are fully customized operating systems built specifically to mine crypto. Developed and maintained by Stackhouse*

> **Kadance Miner Protocol does not end or begin with the KMP binary~ the entire system IS THE PROTOCOL. Including the USB and even the source code.**

KMP does not install onto your hard drive. It runs from memory, no hard drive needed.

> Directly available in RAM, cuts out the middle man" aka the Hard Drive.

This results in quicker system access

> This text-based environment is minimal and less taxing on computer resources

It makes for the perfect, Miner Environment.

> Loading Miner software directly onto RAM does take up Memory but allows for security - +
The size of this Operating System is quite small, so you don't miss out on much memory

You can easily convert KMP-D to USB. **Security support till Summer 2028**

> Stackhouse* commits to upgrading every release after successful testing is complete

FULL AUTHORITY :) You can modify your device as much as you want

>>> Konsole Zero, Konsole One and Konsole Two – work with most systems. Even servers.

Booting in Legacy mode offers the best CPU performance.
All Konsole Series Operating systems can boot UEFI or Legacy.

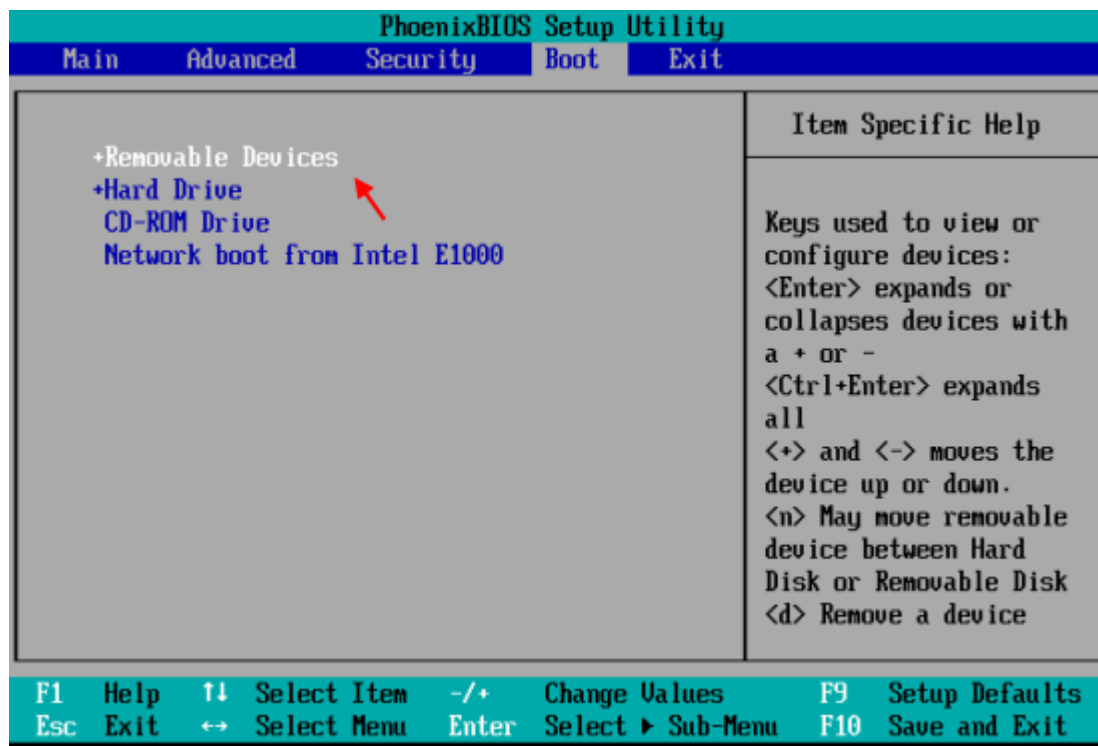
Boot Guide: In order to boot to USB, The option must be made accessible.

If your system does not show the USB option by default, you will have to change the defaults in BIOS
below is a reference on how to access your "BIOS"

Manufacturer	BIOS Keyboard Entry	Older/Other
ACER	DEL or F12 or F2	F1 or Ctrl+Alt+Esc
ASUS	F2 or DEL or ESC or F10	Esc
COMPAQ	F10	F1 or F2 or F10 or Del
DELL	F2 or Ctrl+Alt+E or DEL	Fn+Esc or Fn+F1
HP	F1 or F10 or F11 or F12	F2 or Esc or Esc+F10
LENOVO	F1 or F2 or Novo button"	Ctrl+Alt+F3 or Ctrl+Alt+Ins
--	--	or Fn+F1
IBM	F1	F2
TOSHIBA	F1 or ESC	F12
SAMSUNG	F2	--
SHARP	F2 or DEL	--
Windows Surface Pro	Turn off Surface Pro & Hold Volume Up + Power Button	

*****when you reach your BIOS, you can change your default settings
to include USB as a boot option*****

Photo reference below-->



enter the keyboard combo or single key at the "loading" screen to access BIOS
--when you complete your changes. Save your Changes.
After completion, you may proceed with the steps on **Page1**

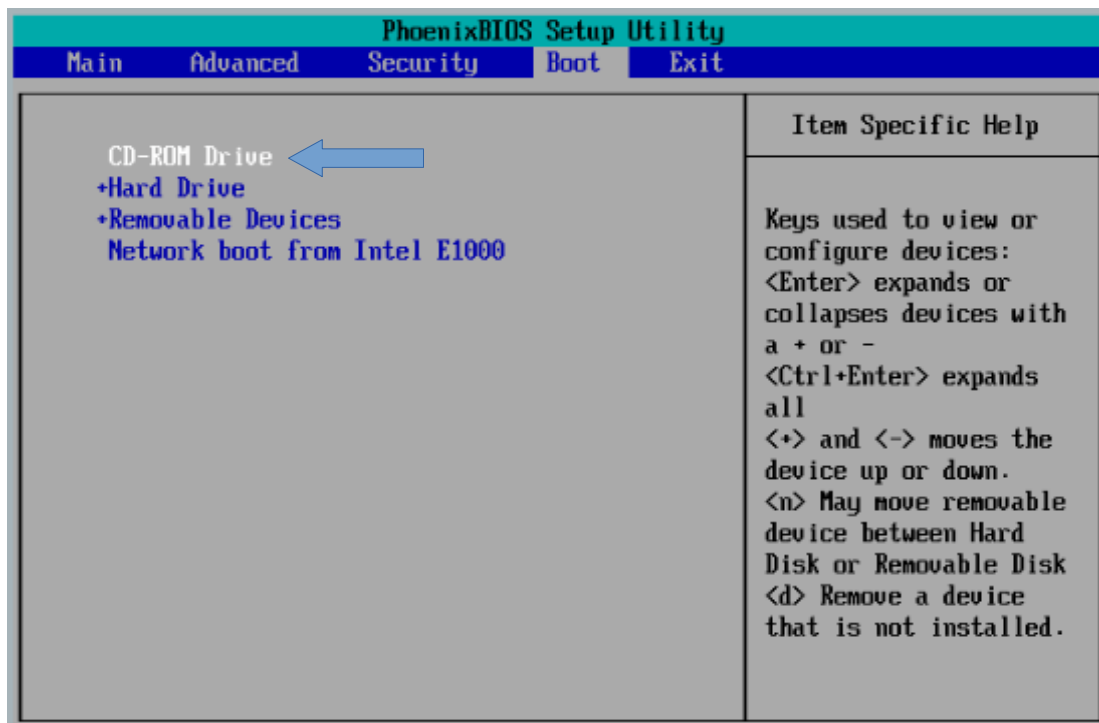
Boot Guide: In order to boot to CD/DVD, The option must be made accessible.

If your system does not show the CD/DVD option by default, you will have to change the defaults in BIOS
below is a reference on how to access your "BIOS"

Manufacturer	BIOS Keyboard Entry	Older/Other
ACER	DEL or F12 or F2	F1 or Ctrl+Alt+Esc
ASUS	F2 or DEL or ESC or F10	Esc
COMPAQ	F10	F1 or F2 or F10 or Del
DELL	F2 or Ctrl+Alt+E or DEL	Fn+Esc or Fn+F1
HP	F1 or F10 or F11 or F12	F2 or Esc or Esc+F10
LENOVO	F1 or F2 or Novo button"	Ctrl+Alt+F3 or Ctrl+Alt+Ins
--	--	or Fn+F1
IBM	F1	F2
TOSHIBA	F1 or ESC	F12
SAMSUNG	F2	--
SHARP	F2 or DEL	--
Windows Surface Pro	Turn off Surface Pro & Hold Volume Up + Power Button	

*****when you reach your BIOS, you can change your default settings
to include CD/DVD as a boot option*****

Photo reference below~>



enter the keyboard combo or single key at the "loading" screen to access BIOS
--when you complete your changes. Save your Changes.
After completion, you may proceed with the steps on **Page1**