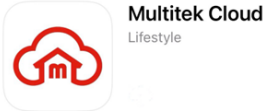


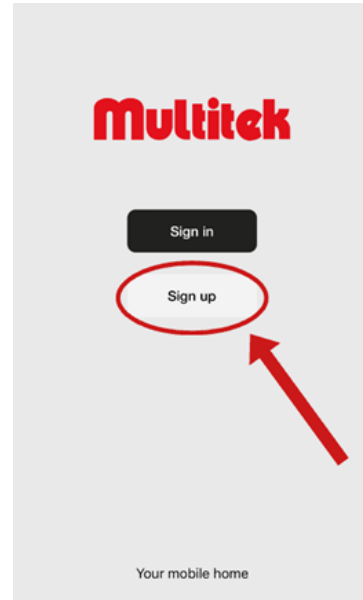
Installation Manual

1. Power On the Ibox: Plug in the Ibox and wait for the blue light on the main button to illuminate.

2. Download the Multitek Cloud App, Scan the White QR code on the Ibox Passport to Load the Multitek Cloud App



3. Open the App and Tap Sign Up to Create an Account



While setting up the Password, the following criteria will need to be met.

Password Length must be between 8 and 20 Characters

Must contain uppercase and lowercase letters

Must contain at least 1 digit

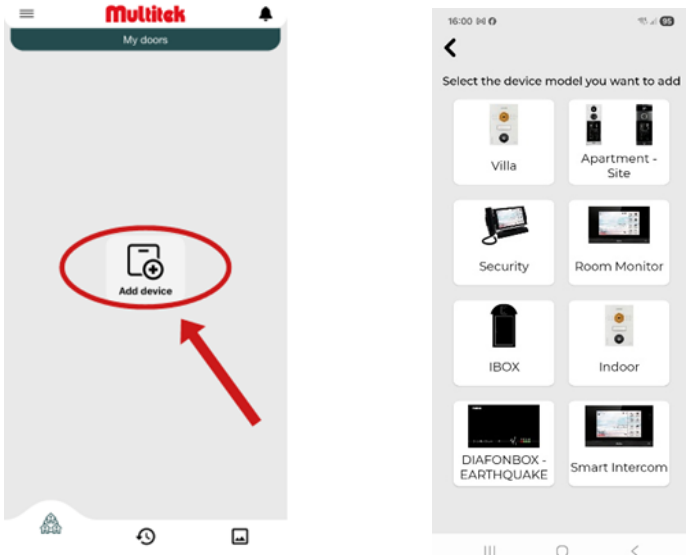
Name, Surname, or email username must not be in the password

When the registration is completed, a confirmation e-mail is sent to the email address you registered with. Complete the registration by entering the activation code within 5 minutes

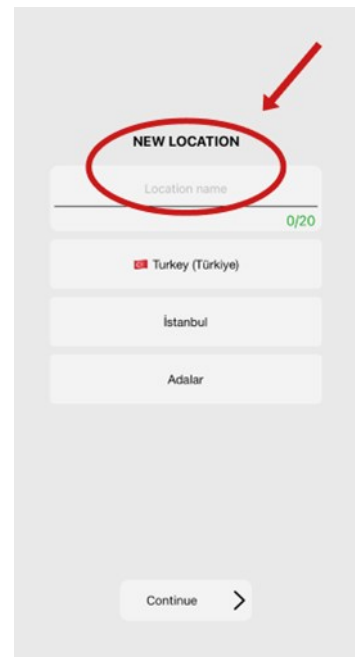
4. Add your Ibox to the App,

Once Signed in , press **Add device**

Select Ibox from the list



5. Enter a **location name** (e.g., "HOME," "OFFICE," or your postcode). The purpose of this location is so that we can group 'doors' in the same physical location. For example, 'summer house' 'rental property' etc. Each user can have an unlimited number of locations and doors and you can access all of these by swiping right on your home page.



6. Scan the silver QR code Sticker on the Ibox to identify the Device



Name your device (e.g.. "Post Box"). The Purpose of this is to clarify the defined location for example 'Front Door' or 'Garden'

7. Activate the Ibox.

Turn the Ibox off and then Back on. Wait for the Blue Light on the Front Panel Button to appear illuminated. When is lights up press the button within 30 seconds, You should hear a sound confirming the press.

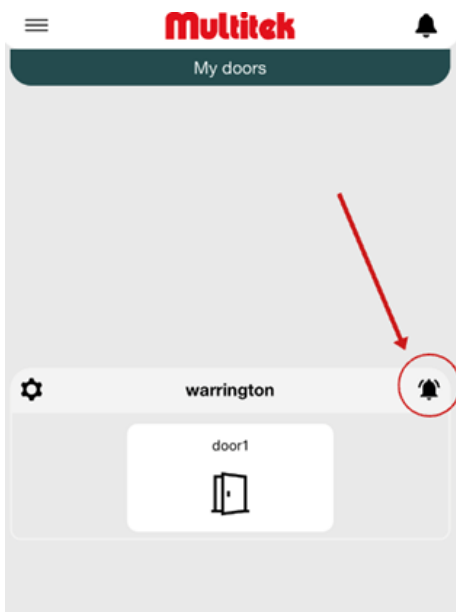


Connect the Ibox to the Wi-Fi

Follow the prompts o select your Wi-Fi network and enter WIFI password. Connect to the Ibox Hotspot when prompted

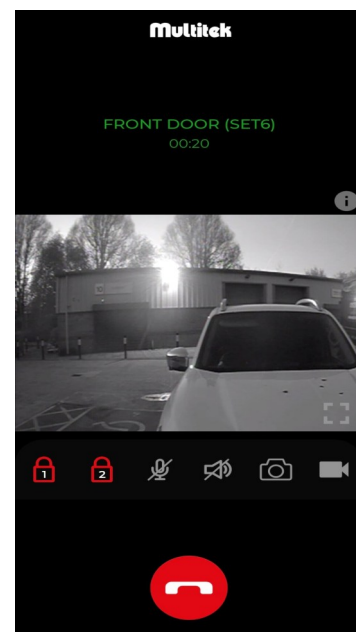
8. After following these steps your Ibox should be fully set up with the Wi-Fi.

The Ibox will now be on your main page . You can mute the app by tapping on the bell icon to switch off notifications. When the app is muted, it remains muted until it is switched off again



9. Answering a call

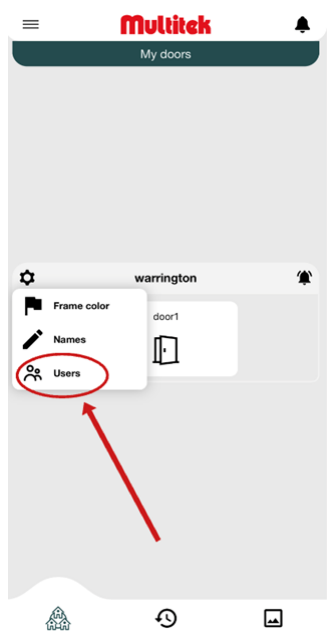
When you touch the door icon or answer a call. You can see the call screen below.



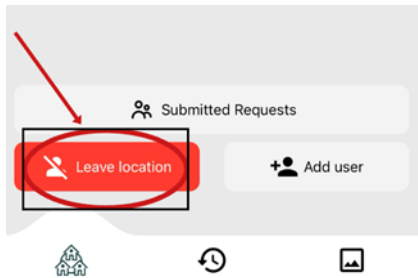
You can monitor the camera of the door panel on the screen, take photos and video, talk through the box as well as open the Ibox Door

10. Removing a Device

On the home page of the Multitek Cloud app, Tap the settings icon  Select User

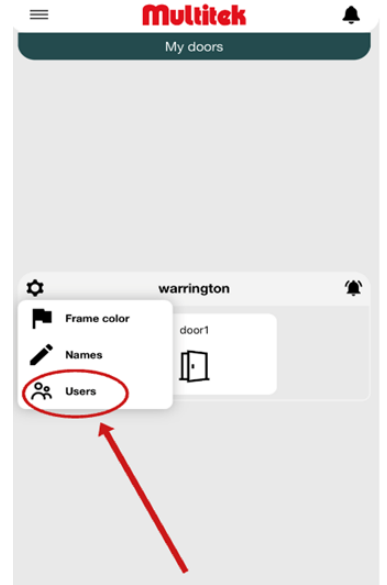


Tap Remove to Delete the Device from your account



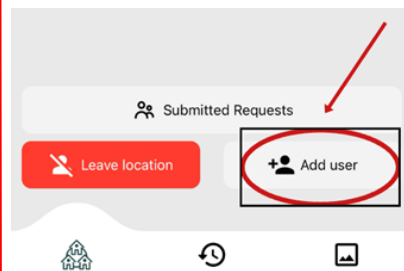
11. Adding a User

On the Home Page of the Multitek Cloud app , Tap the Setting  Icon , Select User




Tap Add User .

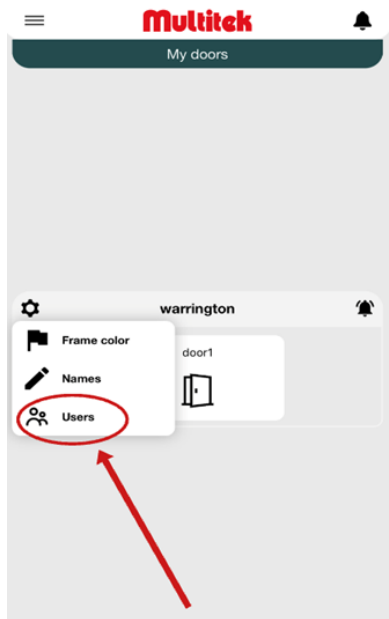
And enter the user's email address



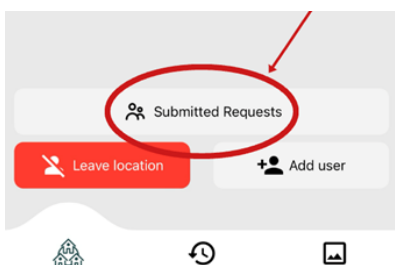
Only owners of the Ibox can invite or remove users. Users that are not admins cannot invite or remove users

12. How to approve joining requests

On the Home Page of Multitek Cloud App, tap the Setting  Icon , Select User

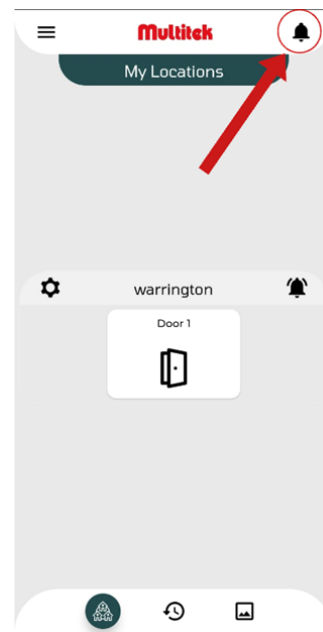


Select Submitted Request to view any request you may have .



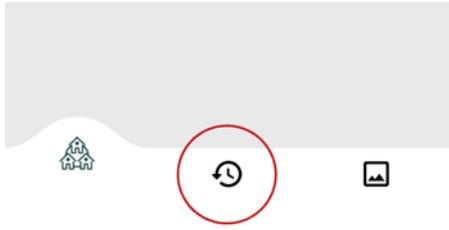
13. How to view notifications .

Press the bell button in the top right corner of the home page and you will be able to access all your notifications.



14. Call and Media Recordings

You can access all calls and Photos by selecting the History Icon . You will be able to see incoming , outgoing and missed calls on the screen.

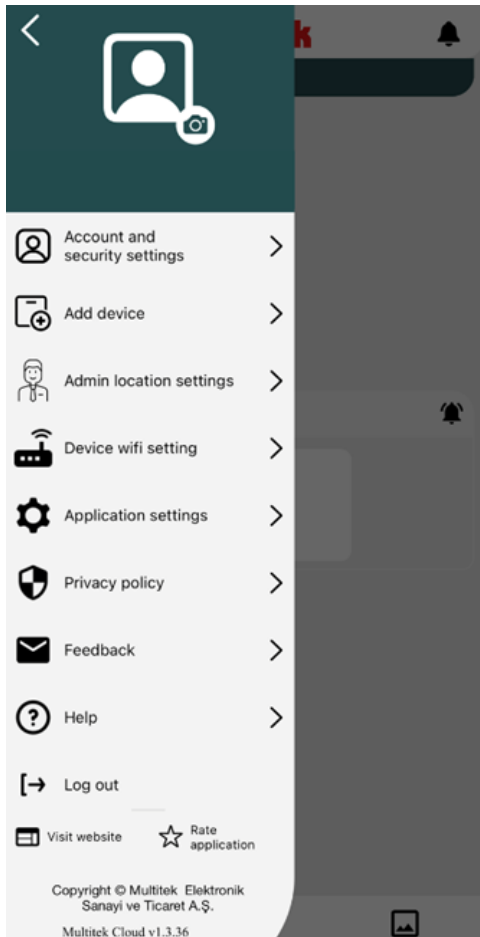


15, How to release the door

Press the Padlock



16. Setting



Profile Photo:

In this section you can add or update your profile photo

Account and Security Settings:

Here you can edit your personal details in your account settings as well as manage your password and security settings.

Add device:

Here you can add new Ibox devices by selecting this icon.

Admin location settings:

Here you can edit your Ibox location.

Device Wi-Fi settings:

Here you can reconnect and relink your Ibox to the Wi-Fi.

Application settings:

Here you can adjust the sound and vibration settings of this app as well as generic call settings.

Privacy Policy:

Here you can access the confidentiality agreement.

Feedback:

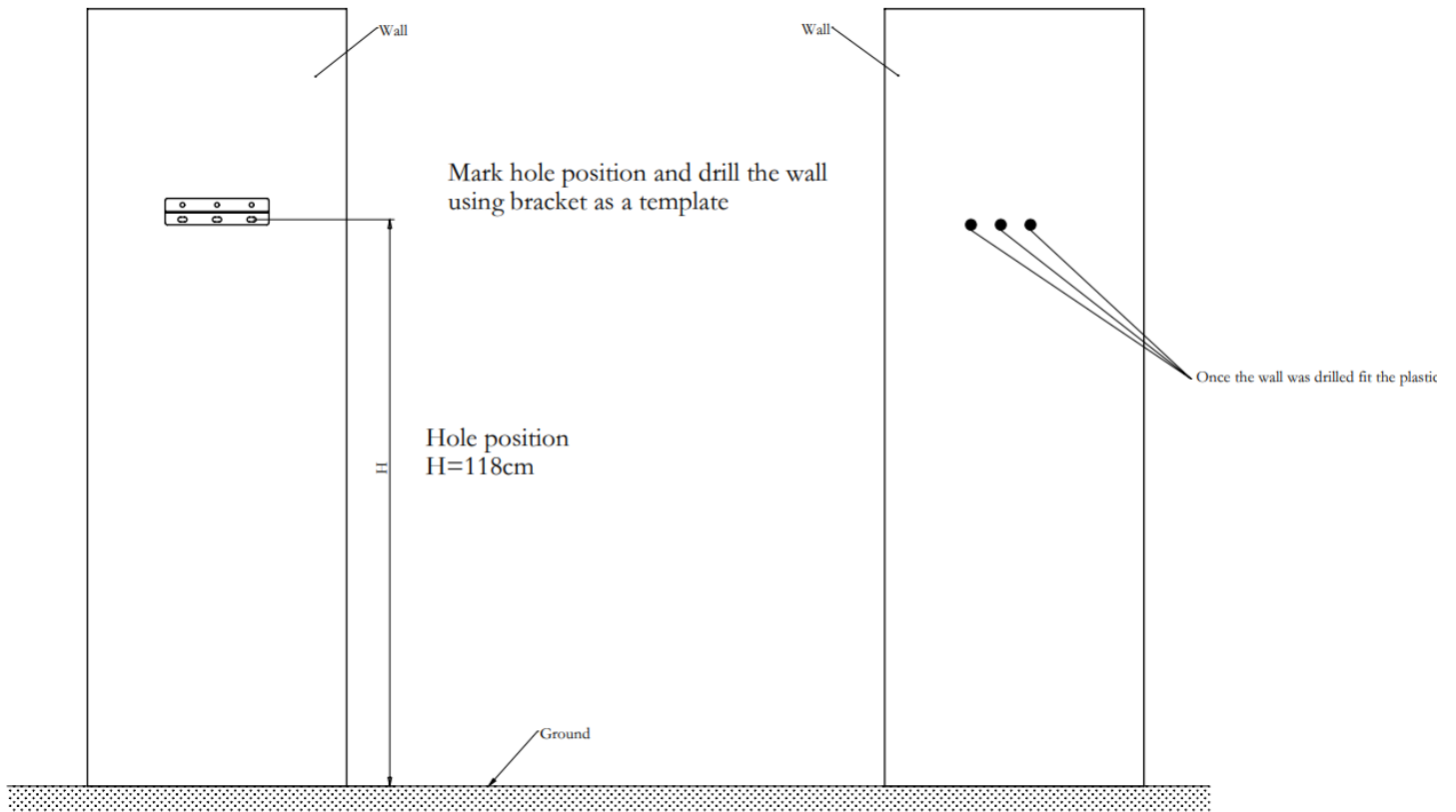
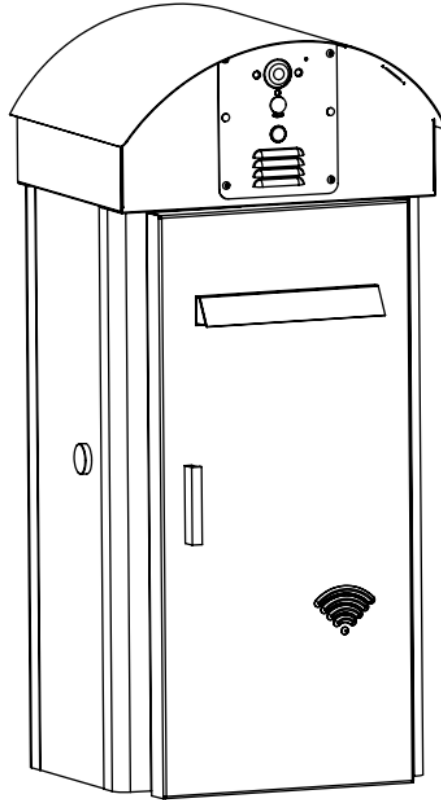
Here you can send us any comments or feedback regarding the app, and this will be received by the Multitek Cloud team.

Help:

Here you can access the user manual.

Fitting Instructions

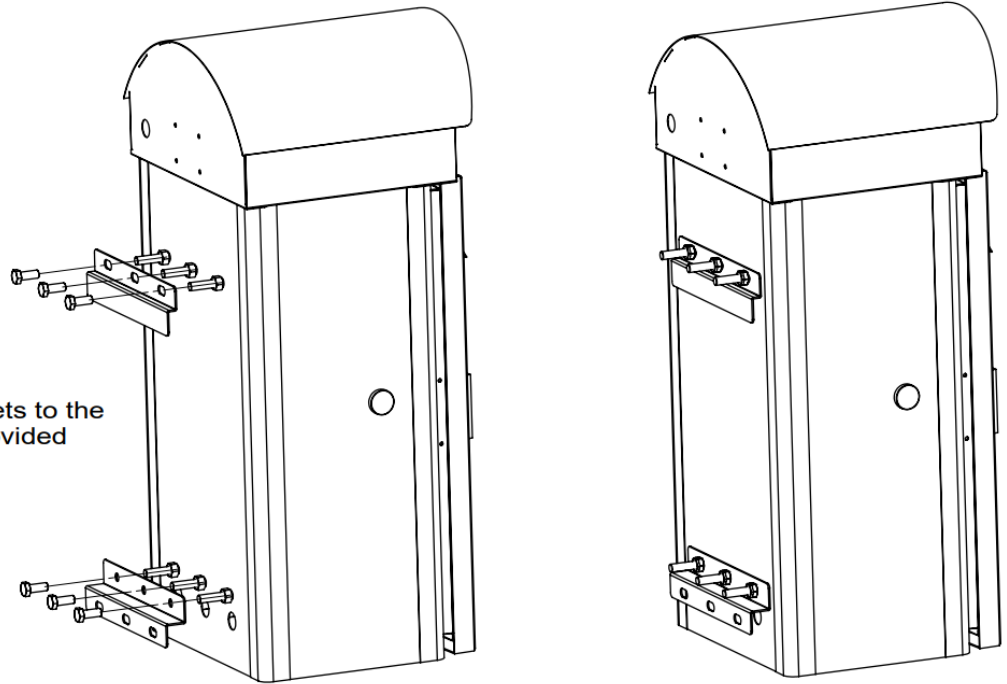
Assemble Your Ibox Secure To a wall



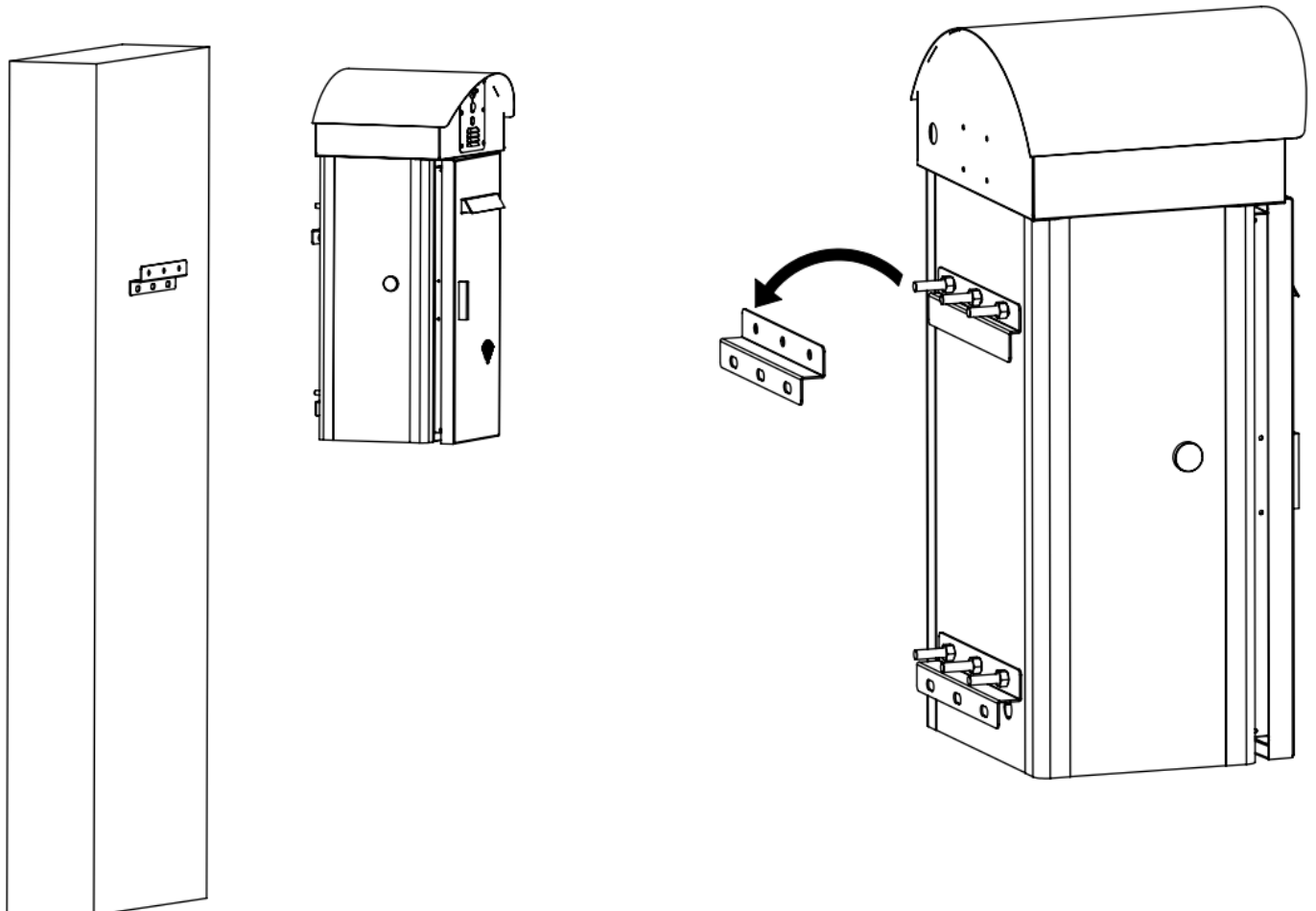
Fitting Instructions

Assemble Your Ibox Secure To a wall

Secure the mounting brackets to the post box with the fixings provided



Lift Ibox and hang on the bracket



Fitting Instructions

Assemble Your Ibox Secure To a wall

OPEN IBOX DOOR
SECURE THE BOX TO WALL WITH
SCREW FROM IBOX INSIDE

CONNECT THE 24V 2AMP POWER
CONNECTOR

