



EMBRACE THE FUTURE

Premium **3 BHK Residential Apartments**
for an imperial living experience

Contact 7066000058 | 7066000053 for bookings or
Site Visit.





AN IMPERIAL LIFESTYLE AWAITS YOU!

Contact 7066000058 | 7066000053 for bookings or Site Visit.





**Welcome to Imperial Apartments where
every single cell of your body and
all your senses comes alive with joy,
comfort, security, hope and esteem.**



Great location and proximity to the residential and commercial hubs of Tricity makes Imperial Apartment the rational choice. The green surroundings delight your eyes and the fragrance of fresh air is food for your soul. Your ears hear the laughter of your family and your heart feels assured that you have made the right choice because of the security and safety arrangements. This is the place where you taste freedom from all worries. This is the place where you touch the zenith of ease and esteem.

The Imperial architecture is fragrant with luxury and a swanky lifestyle in the throbbing hub of activity promising a wholesome and delightful experience; thanks to the provision of all basic requirements within the complex. With superb infrastructure and high quality fittings and installations, it spells class every way. High speed lifts, advanced security, fire prevention measures, a club cum community space, adequate parking and visually appealing residential design compliment all the spaces that wrap around it.

Contact 7066000058 | 7066000053 for bookings or Site Visit.



HEAR THE JOY OF WORLD CLASS AMENITIES

Contact 7066000058 | 7066000053 for bookings or Site Visit.





Premium Club House | 60,000+ Sq Ft Green Area | 66 ft wide front Road
 Gymnasium | Kids Play Area | Yoga Centre | Table Tennis Room
 Multipurpose Hall | Pool Room | Terrace Swimming Pool with separate kids Pool Area
 24x7 Security | 65% Open Area | Stilt + Open Parking | 4 Entry Gates
 Fire Fighting Arrangement | 5 Rain Water Harvesting Wells

Contact 7066000058 | 7066000053 for bookings or Site Visit.

#AnImperialLife

PLANNED TO PERFECTION

Contact 7066000058 | 7066000053 for bookings or Site Visit.

- | | |
|----------------------|------------------------------|
| 1 Main Entry | 12 Scented Garden |
| 2 Exit | 13 Outdoor Gym |
| 3 Drop-off | 14 Kids Play Area |
| 4 Shopping Promenade | 15 Cultural Court/ Oat |
| 5 Surface Parking | 16 Entry to the Central Park |
| 6 Obelisk | 17 Green Area |
| 7 Entry Plaza | 18 Club Deck |
| 8 Boulevard | 19 Barbecue Zone |
| 9 Gazebo | 20 Clue House |
| 10 Basketball Court | 21 Swimming Pool |
| 11 Speaking Tree | 22 Water Bodies |



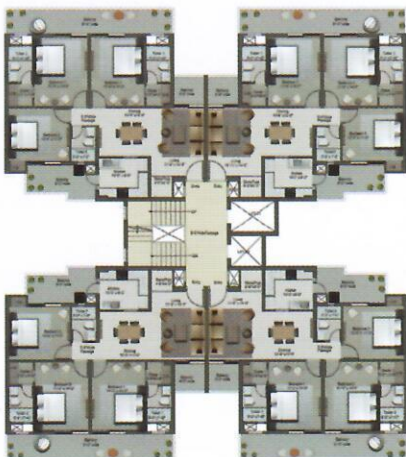
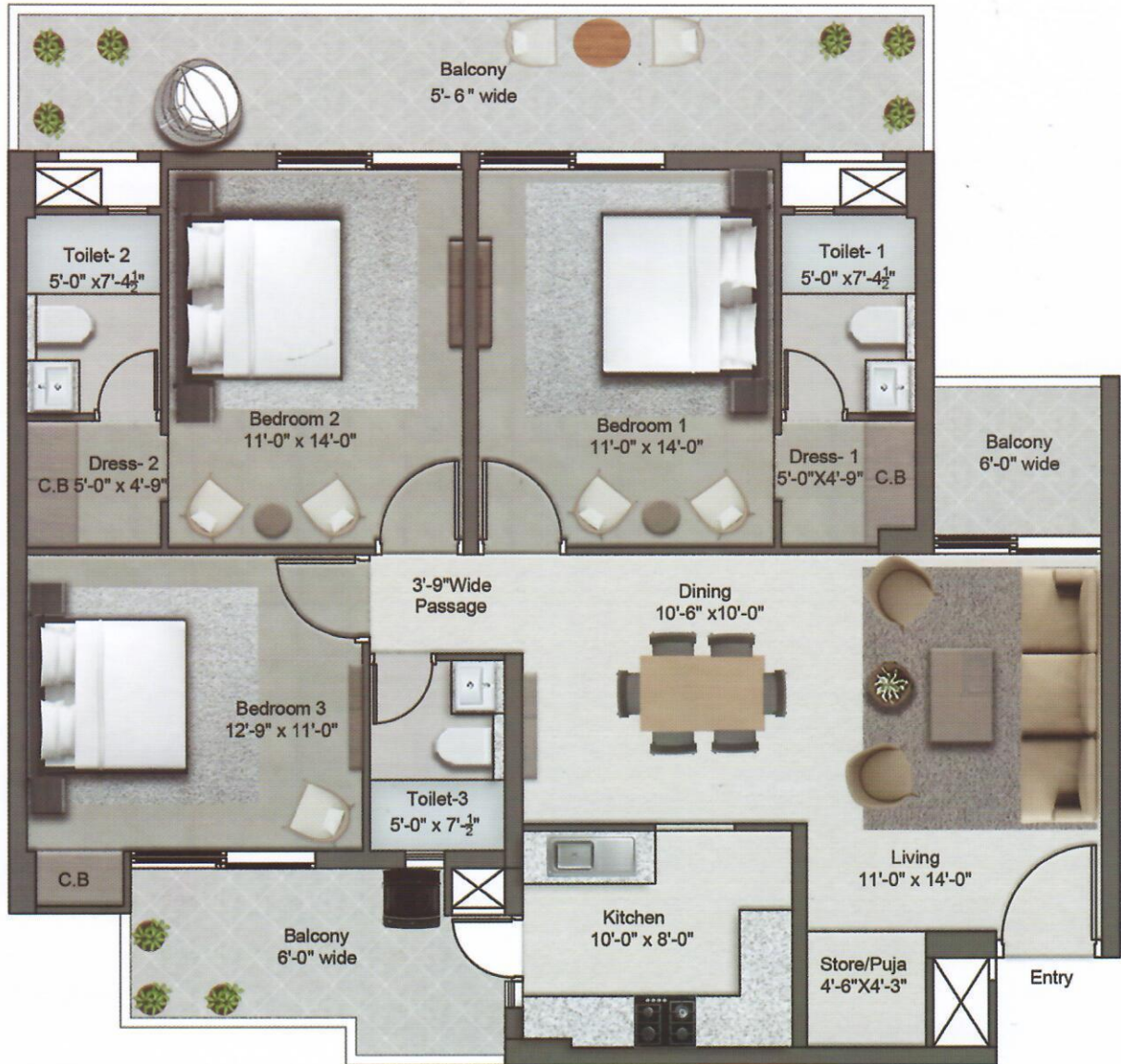


Contact 7066000058 | 7066000053 for bookings or Site Visit.



3 BHK UNIT PLAN

S+14 HIGH RISE (276 UNITS)



CLUSTER
PLAN

Covered Area
1155 Sq Ft.

Balcony Area
322 Sq Ft.

Super Area
1800 Sq Ft.



TECHNICAL SPECIFICATIONS

S+14 HIGH RISE (276 UNITS)



STRUCTURE

Maivan Structure
RCC Earthquake Resistant Raft Footing Structure
Vetted from IIT Roorkee



LIVING/DINNING

Doors	: Flush Doors/Skin Doors with enamel Mat Finish
Flooring	: Vitrified Tiles 32*64
Walls	: Acrylic Emulsion Paint Finish
External window Glazing	: UPVC with Toughened Glass
Switches	: L&T Modular Switches & MCB
Other	: PVC Provision for Split AC
Ceiling	: POP Cornice



BEDROOMS

Doors	: Flush Doors/Skin Doors with enamel Mat Finish
Flooring	: Vitrified Tiles 32*64
Walls	: Acrylic Emulsion Paint Finish
External Window Glazing	: UPVC with Toughened Glass
Wardrobes	: Ply with Sunmica
Switches	: L&T Modular Switches & MCB
Other	: PVC Provision for Split AC
Ceiling	: POP Cornice



WASHROOMS

Doors	: Flush Doors/Skin Doors with enamel Mat Finish
Flooring	: Anti-skid Tiles of Premium quality 12*12
Walls	: Premium tiles Size 12*24
Chinaware	: Jaguar/Kohler/Grohe/Cysterns/ Geberit
Ceiling	: Gypsum False Ceiling with (T) sections



MODULAR KITCHEN

Flooring	: Premium quality Vitrified Tiles
Walls	: Premium quality Tiles 2FT above counter
External window Glazing	: UPVC with Toughened reflected Glass
Wardrobes	: Semi Modular Kitchen with Double Bowl Sink
Other	: Granite Counter Slab



STAIRCASE/ COMMON CORRIDORS

Flooring	: Granite/Tiles Subject to availability
Walls	: Acrylic Emulsion Paint Finish
Other	: SS Railing



BALCONIES

Flooring	: Anti-skid Tiles 12*12
Other	: MS Railing



LIFTS

Two lifts in each tower



S+4 FLOORS



Contact 7066000058 | 7066000053 for bookings or Site Visit.





TRUST & CREDIBILITY AT IT'S BEST

Developed under the aegis of Harmony Colonizers pvt. Ltd, Imperial Apartments resonates with its mark of quality and value for money. It is a RERA registered and certified Real Estate Company with presence all over North India. It has in its kitty townships, residential apartments and other premium projects.

Imperial Apartments is an esteemed investment given its appropriate location and well appointed apartments, both as residential space and to benefit from fast growing returns. The project and the company is a well- reckoned success story in itself and if you choose to be a prime mover, your testimony as a satisfied and happy customer will inspire thousands of families who aspire to live a dream life marked with luxurious amenities and functional features.

Imperial Apartments is an elevation for your status and lifestyle!

- Brand Values
- Premium Investment for years to come

ABOUT HARMONY COLONISERS PRIVATE LIMITED

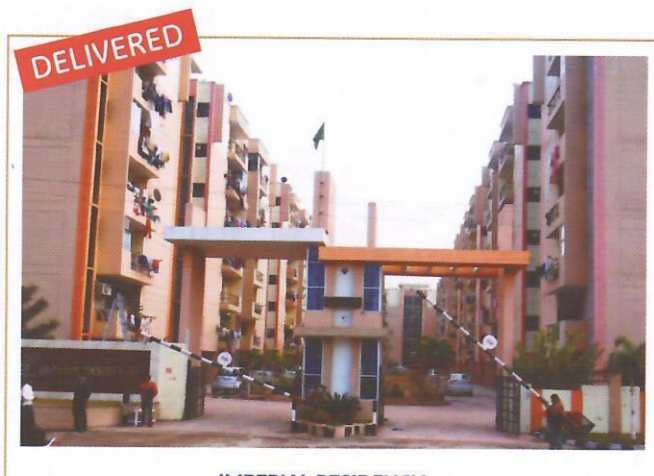
Harmony Colonisers (P) Ltd. was Incorporated under the companies Act 1965, ROC vide Registration No U70102PB2007PTC030793 dated 4th Jan, 2007. Somsons Colonizers Limited has been our associate company. Both of the companies developed and constructed a reputed and magnificent project namely imperial residency at Peer Muchalla, Distt. Mohali.

The Project brought big fame for being completed within stipulated time as per the commitment, quality and expectations of our prestigious customers. The Imperial Apartments is also being developed in association with somsons colonizers limited. The land of the project is completely owned by the company.

ABOUT SOMSONS INFRA LIMITED

Somsons Infra Limited, A company with passionate and persistent approach for creating wonderful and lively infrastructure and projects that enhance to the beauty of life. You can be assured that with our experience in real estate sector, we will exceed your expectations every time ! no deadline is too tight, no budget is too modest.

Every project is a dream project for us. We have been in the field of Colonization from the last 26 years, having a number of successful projects in various cities of Punjab. Each project is a master piece in itself. We stand by and are known for our commitment, quality and customer's satisfaction.

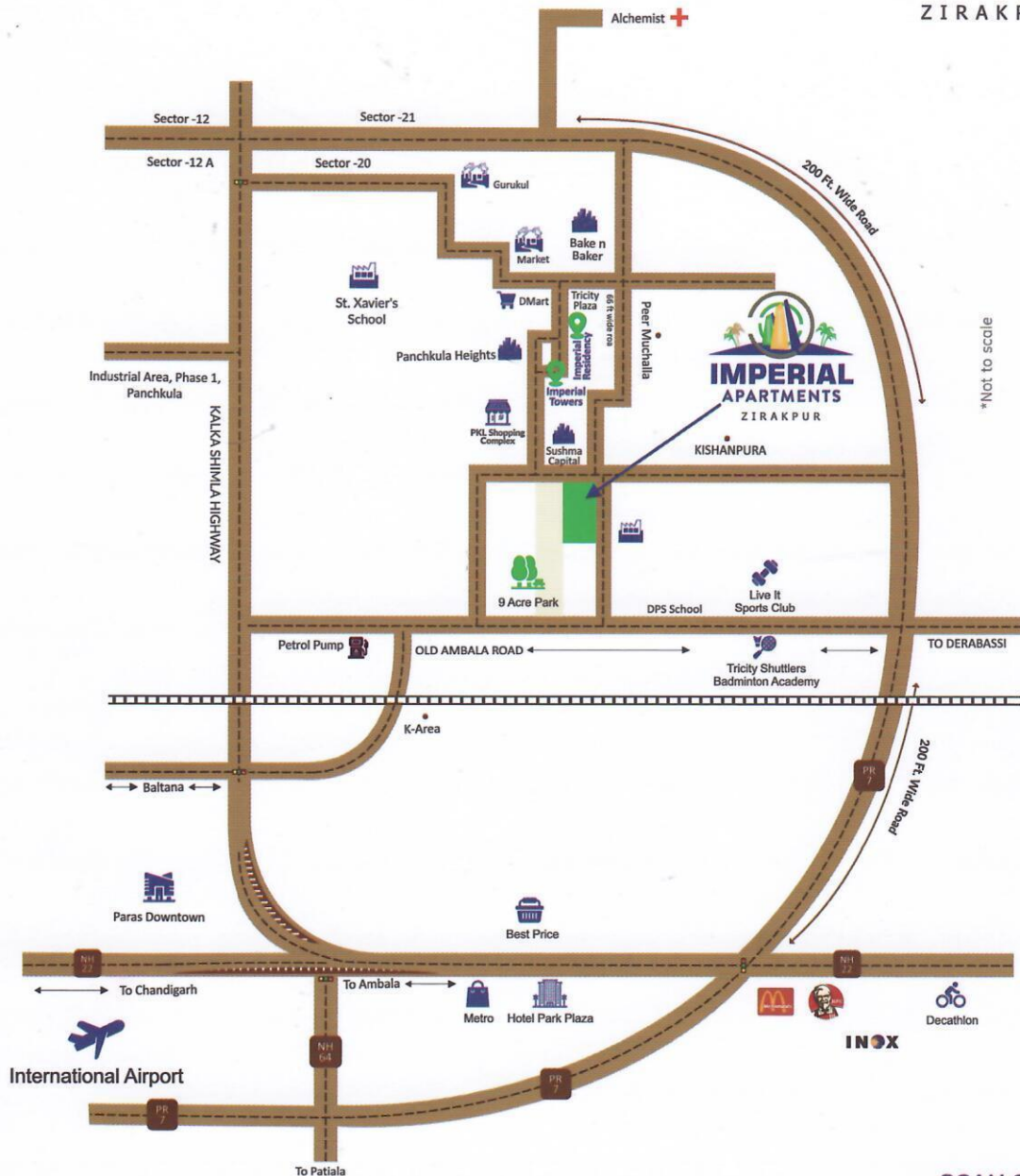


IMPERIAL RESIDENCY



IMPERIAL TOWER

FEEL CONNECTED WITH THE WORLD



Contact 7066000058 | 7066000053 for bookings or Site Visit.

TIME STONES

DPS World School - 01 mns | Zirakpur Bus Stand - 10 mns | Alchemist Hospital - 07 mns
 St. Javiers School - 02 mns | Panchkula Golf Club - 10 mns | Chandigarh Airport - 25 mns
 Sector 20 Market - 02 mns | Paras Hospital - 15 mns | Chandigarh Railway Stand - 20 mns

SCAN QR FOR
LOCATION



Site Office: Kishanpura Road,
 Opposite Sushma Capital Mall,
 Adjoining Dhakoli, Zirakpur (Punjab)

W : www.imperialapartments.co.in

E: sales@imperialapartments.co.in

Follow us on:  



A Project by Harmony Colonizers Pvt. Limited
 (Venture of SOMSONS Infra Limited)