

POWERSOL
METALCRAFT LIMITED

THE NON-COMPROMISING STEEL

QUALITY, HEALTH & SAFETY

ENVIRONMENT

POWERSOL METAL KRAFT LTD. is committed to

- Improve customer satisfaction by supplying excellent quality products and services at the competitive prices with on-time product delivery.
- Least environmental impact by preventing pollution through control & optimal usage of resources required for the processes and proper management of our wastes and by-products..
- Provide healthy & safe work place free from injury and ill health to all our interested parties for enabling individuals to contribute efficiently.
- Comply with all relevant statutory, regulatory and other requirements related to quality, environment, health & safety.
- Make continual improvement in our quality, environmental, health & safety performance through optimization of processes.
- Reduction of wastes through Reduce, Reuse, Recycle and safely disposing of hazardous materials.
- Educate and communicate our QHSE Policy and objectives to all our employees, visitors, interested parties and contractors.

This shall be achieved with the involvement of all the employees and periodic review by the management.

THE JOURNEY, SUMMARIZED

Disrupting the domain with unparalleled standards
and innovative offerings for over two decades

Brought into inception in the year 1995, **POWERSOL METALCRAFT LTD.** is a leading manufacturer known for high-quality steel structural offerings such as Joists, Angles, Channels, Flat, Round, H-beam, I-beam, RCS, and more.

With clients that span from leading private companies to government establishments comprising of PSUs and state electricity boards to transmission line contractors and more, we have grown exponentially ever since the inception, raising the bar on the industrial standards.



**POWERSOL
METALCRAFT LTD.**

THE NON-COMPROMISING STEEL

THE STANDARDS, INSTILLED

A roadmap of our standard and operational upgrades

1997	Established in production with a 305mm rolling unit
2000	Enrolled for energy-efficient unit, the UNDP program
2003	Selected as model/showcase unit under UNDP/ministry of
2006	steel Installed a new 508mm unit for product diversification
2006	New re-heating furnace 762mm cogging
2006	unit Became a conversion agent for SAIL
2008	Installed coal gas production, promoting energy efficiency
2011	Power Grid Corporation of India (PGCIL) approval in 200x200, 100x100 (Angle size developed)
2012	Upgraded from 304.8mm to 406.4mm unit size
2018	Upgraded the production capacity and installed a fully automated
2020	unit Introduced new sizes for flat bars (increased capacity)
2021	Shifted to clean png gas for re-heating furnace to boost energy efficiency and cut down carbon emissions
2022	Upgraded our second unit from 508mm to 558.8mm

THE VALUES, UNCOMPRIMISED

Creating distinction with smart, strategic,
customer or friendly business practices.



VISION

The vision that drives us

Our vision is to move toward a sustainable future built upon unmatched service and quality offerings that reimagine the industry standards.

MISSION

The mission that defines us

Our mission is to become the #1 supplier for the highest quality steel products on the market, with long-term relationships with stakeholders and in equation of trust with customers.

VALUES

The values that describe us

Ethical business practices, warm professional conduct, instilling trust in all stakeholders, quality-focused manufacturing, and an outcome-driven business model is what helps us create a differentiation in the market.

THE EDGE, SHARPENED

The things that differentiate us from the competition



Manufacturing cycle optimization
to ensure optimal outcomes



Continuous deployment of new
technologies to raise offering standards



An energy-efficient operational
model to promote sustainability



A customer-centric business model
built to deliver maximum value

THE FACILITY, STREAMLINED

Reimagining operations for sustainable outcomes

Strategic location

Located in Fatehgarh Sahib (Punjab) at 70 km distance from Ludhiana and Ambala on the National Highway, our Industry in Mandi Gobindgarh, Amloh Road is based in one of the most steel developed industrial hubs of North India. It has road and rail connectivity to facilitate flawless, quick procurement and delivery.

High production capacity

With state-of-the-art machinery, we have the capacity to manufacture 1.5 lakh metric tons of steel structures annually. We are expanding the set up further to undertake the production of our various other steel products in the near future. We maintain ISO 9001: 2015 as a means of formalizing our operating methods.

Environment-friendly operations

Environmental concern has always been on the top of our agenda. Our plants incorporate the latest operational technologies to control dust emission, noise levels, pollution, and the overall carbon footprint. We maintain ISO 14001 : 2015 (Environmental Management System) to improve the environmental performance of the surrounding and also maintain ISO 45001 : 2018 to safeguard our employees for ill health and injury.

THE OFFERINGS, UNMATCHED

The products that have been adopted by market leaders

To cater to the demand of our valued customers regarding higher section of structural steels, we have associated ourselves with Steel Authority of India Ltd. for supply of raw material. This has provided the company with an unparalleled variety of sections.

GRADES OF MATERIALS:

We provide material as per below given IS standards & grades

IS-2062	IS-1852	IS- 808	IS-1732	IS-1730	IS-1252
Grade- A, BR, B0, C	Cutting Tolerances of Structural Steel Rolled Products	For Dimensions of Structural Steel Rolled Products	For Round & Square	For Flat	For Bulb Angle



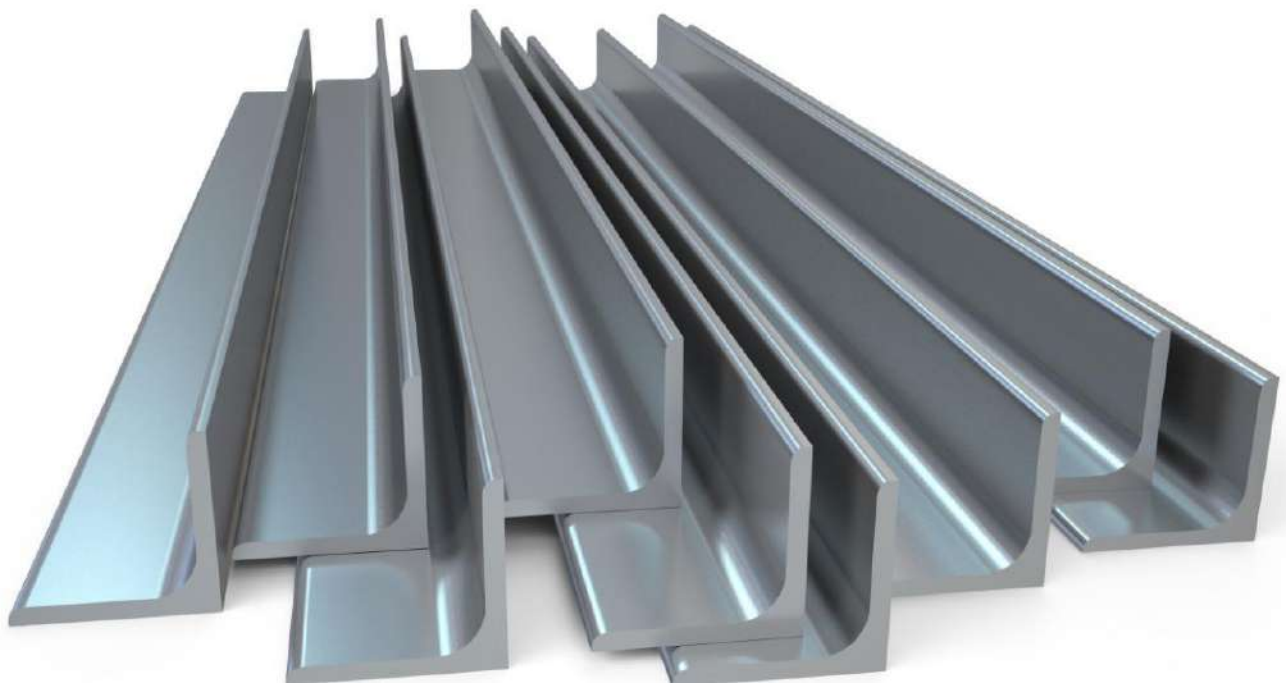
ANGLE

DESIGNATION	THICKNESS
35X35	3,4,5,6
40X40	3,4,5,6
45X45	3,4,5,6
50X50	3,4,5,6
55X55	4,5,6,8
60X60	4,5,6,8
65X65	4,5,6,8
70X70	5, 6, 8, 10
75X75	5, 6, 8, 10
80X80	6, 8, 10, 12
85X85	6, 8, 10, 12
90X90	6, 8, 10, 12
100X100	8, 10, 12, 16
110X110	8, 10, 12, 16
130X130	8, 10, 12, 16
150X150	10, 12, 16, 20
200X200	12, 16, 20 ,25

UN-EQUAL LEG ANGLE

DESIGNATION	THICKNESS
45X30	3,4,5,6
50X30	3,4,5,6
60X40	5,6,8
65X45	5,6,8
70X45	5, 6, 8, 10
75X50	5, 6, 8, 10
80X50	5, 6, 8, 10
90X60	6, 8, 10, 12
100X65	6, 8, 10
100X75	6, 8, 10, 12
125X75	6, 8, 10
125X95	6, 8, 10, 12
150X75	8, 10, 12
150X115	8, 10, 12, 16
200X100	10, 12, 16
200X150	10, 12, 16, 20

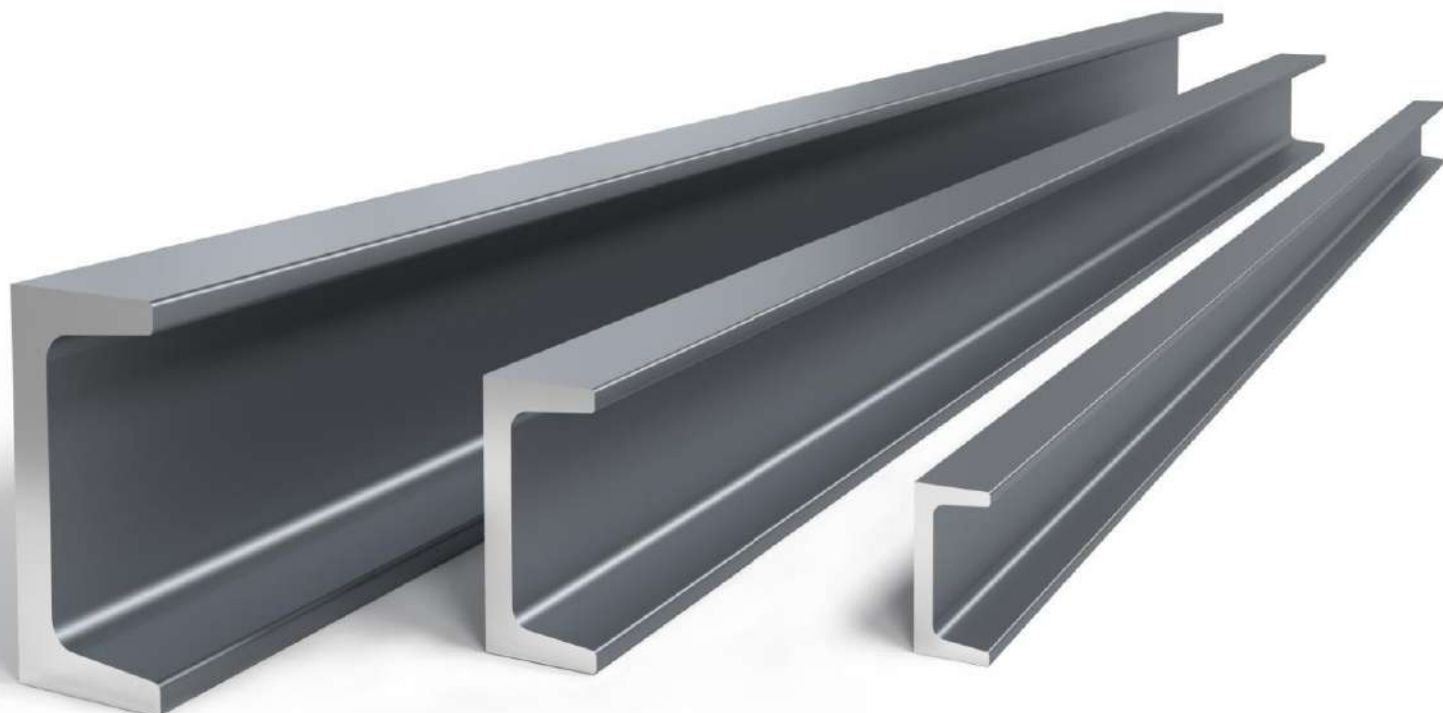
We facilitate rolling of various steel grades of materials- Mild Steels, High Tensile, Low & High Alloy, Stainless Steel & Special Purpose Steel according to IS, BS, EN, ASTM, DIN, JIS & JOIST standards.



CHANNEL

DESIGNATION	WEIGHT (KG/ MTR)
75X40	5.7 LC, 7.140 MC
100X50	7.9 LC, 9.560 MC
125X65	10.7 LC, 13.1 MC
150X75	14.4 LC, 16.8 MC
175X75	17.6 LC, 19.6 MC
200X75	20.6 LC, 22.3 MC
225X80	24 LC, 26.1 MC
250X80	28 LC, 30.6 MC
300X90	33.1 LC, 36.3 MC
350X100	38.9 LC, 42.7 MC

We facilitate rolling of various steel grades of materials-Mild Steels, High Tensile, Low & High Alloy, Stainless Steel & Special Purpose Steel according to IS, BS, EN, ASTM, DIN, JIS & JOIST standards.



BEAMS

DESIGNATION	WEIGHT (Kg/ Mtr.)
100X50	8.9
125X70	13.3
150X75	15.0
175X85	19.6
200X100	24.2
225X110	31.1
250X125	37.3
300X140	46

H-BEAM

DESIGNATION	WEIGHT (Kg/ Mtr.)
200X152	52.0
150X150	30.6
200X150	40.0

W-BEAM

DESIGNATION
W6
W7
W8

We facilitate rolling of various steel grades of materials- Mild Steels, High Tensile, Low & High Alloy, Stainless Steel & Special Purpose Steel according to IS, BS, EN, ASTM, DIN, JIS & JOIST standards.



FLAT BAR

50	6, 8, 10, 12
60	6, 8, 10, 12
65	6, 8, 10, 12
70	6, 8, 10, 12
75	6, 8, 10, 12
80	6, 8, 10, 12
90	6, 8, 10, 12
100	6, 8, 10, 12
120	6, 8, 10, 12, 16,20
130	6, 8, 10, 12, 16,20
140	6, 8, 10, 12, 16,20
150	6, 8, 10, 12, 16,20
160	8, 10, 12, 16,20
180	8, 10, 12, 16,20
200	10, 12, 16,20,25
250	10, 12, 16,20,25
300	10, 12, 16,20,25
400	10, 12, 16,20,25

We facilitate rolling of various steel grades of materials- Mild Steels, High Tensile, Low & High Alloy, Stainless Steel & Special Purpose Steel according to IS, BS, EN, ASTM, DIN, JIS & JOIST standards.

ROUND

DIAMETER	WEIGHT (KG/ MTR)
20	2.47
22	2.98
25	3.85
28	4.83
30	5.55
32	6.31
35	7.55
40	9.85
45	12.5
50	15.4
55	18.7
60	22.2
65	26
70	30.2
75	34.7
80	39.5
90	49.9
100	61.7

SQUARE

WIDTH (MM)	THICKNESS
20	3.14
22	3.8
25	4.91
30	7.06
35	9.58
40	12.6
50	19.6
60	28.3
70	38.5
80	50.2

We facilitate rolling of various steel grades of materials- Mild Steels, High Tensile, Low & High Alloy, Stainless Steel & Special Purpose Steel according to IS, BS, EN, ASTM, DIN, JIS & JOIST standards.





MANUFACTURING FACILITIES

UNIT-1

- REHEATING FURNACE - Using one of the cleanest & Eco friendly fuel-PNG as a green energy to reduce carbon emissions and improves air quality.
- RECUPERATOR - optimizing use of heat produced
- FULLY AUTOMATIC ROLLING MILL :
- COOLING SYSTEM - Automatic cooling bed with capacity of 20 ton per hour
- STRAIGHTENING MACHINE – On-line straightening machines.
- MICRO ROLL BRANDING MACHINE – EDM based automatic machine for Stamping.
- FULLY AUTOMATIC HOTSAW MACHINE : For Length Cutting
- WELL EQUIPPED WORKSHOP: Lathe Machines, Shaping Machines, Drilling Machines, Surface Grinding Machines

MANUFACTURING FACILITIES

UNIT-2

- REHEATING FURNACE - Using one of the cleanest & Eco friendly fuel-PNG as a green energy to reduce carbon emissions and improves air quality.
- RECUPERATOR -Optimizing use of heat produced by recover the waste heat which will help to reduce amount of carbon emission and protect the environment.
- FULLY AUTOMATIC ROLLING MILL :
 - Roughing stand - centre - 550 mm
 - Intermediate stands - centre - 550 mm
 - Finishing stands - centre - 510 mm
- COOLING SYSTEM - Automatic cooling bed with capacity of 25 ton per hour
- STRAIGHTENING MACHINE (02 NOS) - On-line straightening machines installed
- MICRO ROLL BRANDING MACHINE - EDM based automatic machine for Stamping.
- FULLY AUTOMATIC BANDSAW MACHINE : For Length Cutting
- WELL EQUIPPED WORKSHOP: Lathe Machines, Shaping Machines, Drilling Machines & Surface Grinding Machines, etc.

ASSURANCE SYSTEM

The Lab is well equipped with various inspection & Testing Equipment of Latest technology

- Optical Emission Spectrometer for Chemical Analysis
- Universal Testing Machine testing machine (UTE-60)
- Impact testing machine (Charpy & Izod)
- Brinell Hardness tester
- Infrared Thermometer
- Linear Measuring Equipments
- We have dedicated team of qualified & experienced engineers for supervision and testing of product quality.
- Developed system for Traceability of raw material to final product

Chemical Compositions - As per IS-2062

GRADE	QUALITY	LADLE ANALYSIS, MAX					Carbon Equivalent, Max	Mode of Deoxidation
		C	MIN	S	P	SI		
E-250	A	0.23	1.50	0.05	0.05	0.40	0.42	SEMI KILLED/ LILLED
	BR	0.22	1.50	0.05	0.05	0.40	0.41	SEMI KILLED/ LILLED
	BO							
	C	0.20	1.50	0.04	0.04	0.40	0.39	KILLED
E-275	A	0.23	1.50	0.05	0.05	0.40	0.43	SEMI KILLED/ LILLED
	BR	0.22	1.50	0.05	0.05	0.40	0.42	SEMI KILLED/ LILLED
	BO							
	C	0.20	1.50	0.04	0.04	0.40	0.41	KILLED
E-300	A BR BO	0.2	1.5	0.045	0.045	0.45	0.44	SEMI KILLED/ LILLED
	C	0.2	1.5	0.040	0.040	0.45	0.44	KILLED
E-350	A BR BO	0.2	1.55	0.045	0.045	0.45	0.47	SEMI KILLED/ LILLED
	C	0.2	1.55	0.040	0.040	0.45	0.45	KILLED
E-410	A BR BO	0.2	1.6	0.045	0.045	0.45	0.5	SEMI KILLED/ LILLED
	C	0.2	1.6	0.040	0.040	0.45	0.5	KILLED
E-450	A BR	0.22	1.65	0.045	0.045	0.45	0.52	SEMI KILLED/ LILLED
E-550	A BR							
E-600	A BR	0.22	1.7	0.02	0.025	0.5	0.54	SEMI KILLED/ LILLED
E-650	A BR							

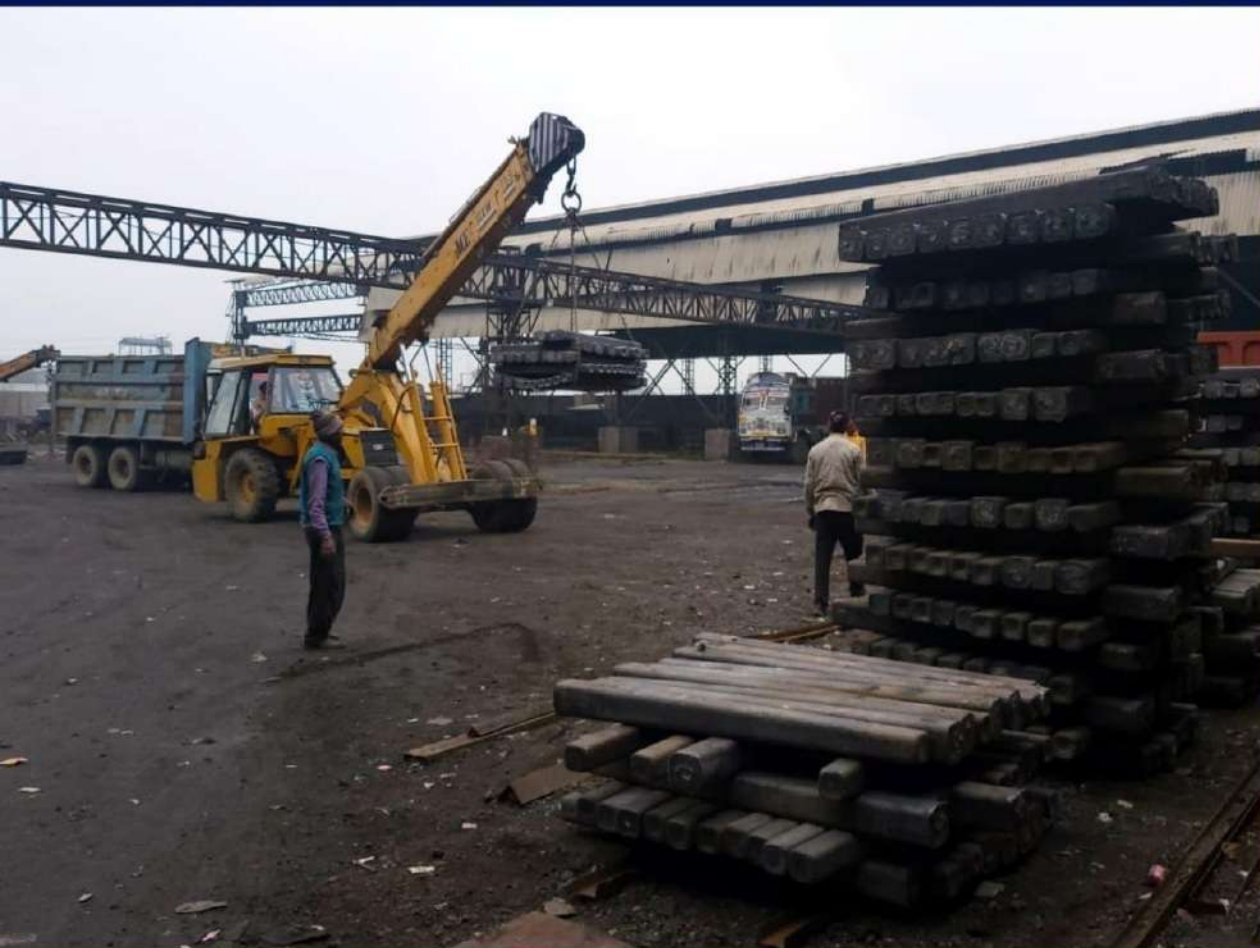
	QUALITY	TENSILE STRENGTH MIN				% ELON- GATION	INTERNAL BEND DIA		CHARPPY IMPACT TEST	
			< 20 mm	20-40	> 40 mm		≤ 25 mm	> 25 mm	TEMP	MIN JOULE
E-250	A	410	250	240	230	23	2T	3T	-	-
	BR								RT	27
	BO								0	27
	C								-20	27
E-275	A	430	275	265	255	22	2T	3T	-	-
	BR								RT	27
	BO								0	27
	C								-20	27
E-300	A	440	250	240	230	23	2T	-	-	-
	BR								RT	27
	BO								0	27
	C								-20	27
E-350	A	490	250	240	230	23	2T	-	-	-
	BR								RT	27
	BO								0	27
	C								-20	27
E-410	A	540	250	240	230	23	2T	-	-	-
	BR								RT	25
	BO								0	25
	C								-20	25
E-450	A	570	450	430	420	20	2.5T	-	RT	20
	BR								-	-
E-550	A	650	550	530	520	12	3T	-	RT	15
	BR								-	-
E-600	A	730	600	580	570	12	3.5T	-	RT	15
	BR								-	-
E-650	A	780	650	630	620	12	4T	-	RT	15
	BR								-	-

	QUALITY	TENSILE STRENGTH MIN				% ELON- GATION	INTERNAL BEND DIA		CHARPPY IMPACT TEST	
			< 20 mm	20-40	> 40 mm		≤ 25 mm	> 25 mm	TEMP	MIN JOULE
E-250	A	410	250	240	230	23	2T	3T	-	-
	BR								RT	27
	BO								0	27
	C								-20	27
E-275	A	430	275	265	255	22	2T	3T	-	-
	BR								RT	27
	BO								0	27
	C								-20	27
E-300	A	440	250	240	230	23	2T	-	-	-
	BR								RT	27
	BO								0	27
	C								-20	27
E-350	A	490	250	240	230	23	2T	-	-	-
	BR								RT	27
	BO								0	27
	C								-20	27
E-410	A	540	250	240	230	23	2T	-	-	-
	BR								RT	25
	BO								0	25
	C								-20	25
E-450	A	570	450	430	420	20	2.5T	-	RT	20
	BR								-	-
E-550	A	650	550	530	520	12	3T	-	RT	15
	BR								-	-
E-600	A	730	600	580	570	12	3.5T	-	RT	15
	BR								-	-
E-650	A	780	650	630	620	12	4T	-	RT	15
	BR								-	-

THE TEAM, UNIFIED

The people at the core that keep moving our business objectives forward.

We believe in a high degree of self-responsibility and passion when it comes to the workforce and administrative management. PSML team is a unique, diverse mix of experienced engineers, skilled workers, and executives with decades of sound techno-commercial expertise that helps the company grow exponentially every year.



POWERSOL
METALCRAFT LIMITED

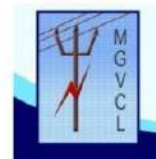
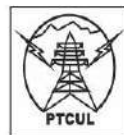
THE NON-COMPROMISING STEEL

THE PROMISE, SOLIDIFIED

What we aim for with every deal and interaction we engage in

Be it private contractors or government entities, **POWERSOL METALCRAFT LTD.** has become a trusted name due to our relentless pursuit of customer satisfaction through product innovation and pertinent pricing. When you partner with us, you don't just get our products. You get a promise of quality, consistency, transparency, and profitable outcomes—with an approach that is non-compromising.

OUR PARTNERS IN GROWTH





THE ENVIRONMENT, PRESERVED

How we drive sustainable business practices

We keep updating our infrastructure to reduce carbon emissions and boost energy efficiencies to push the sustainability narrative forward. We believe in building a better, brighter, greener tomorrow and we always make sure that our operational framework keeps that at its core.