

3-Storey Parkhomes

TYPE **A1**

Intermediate

- 4 Bedrooms
- 4 Baths
- Powder Room
- 2 Utility
- Family Lounge
- Courtyard

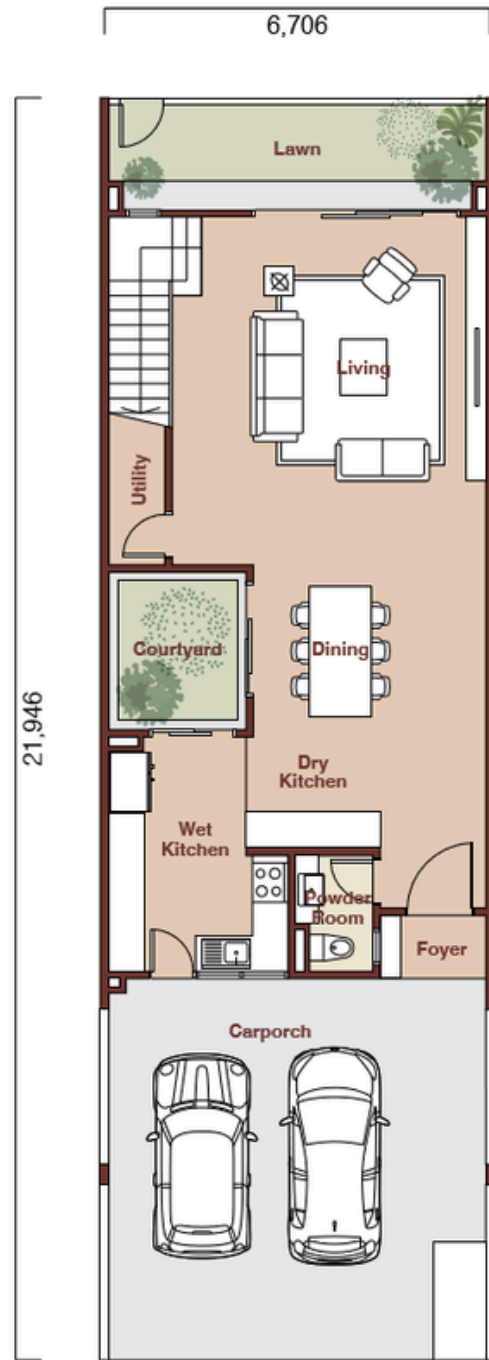


Typical Lot
22' x 72'

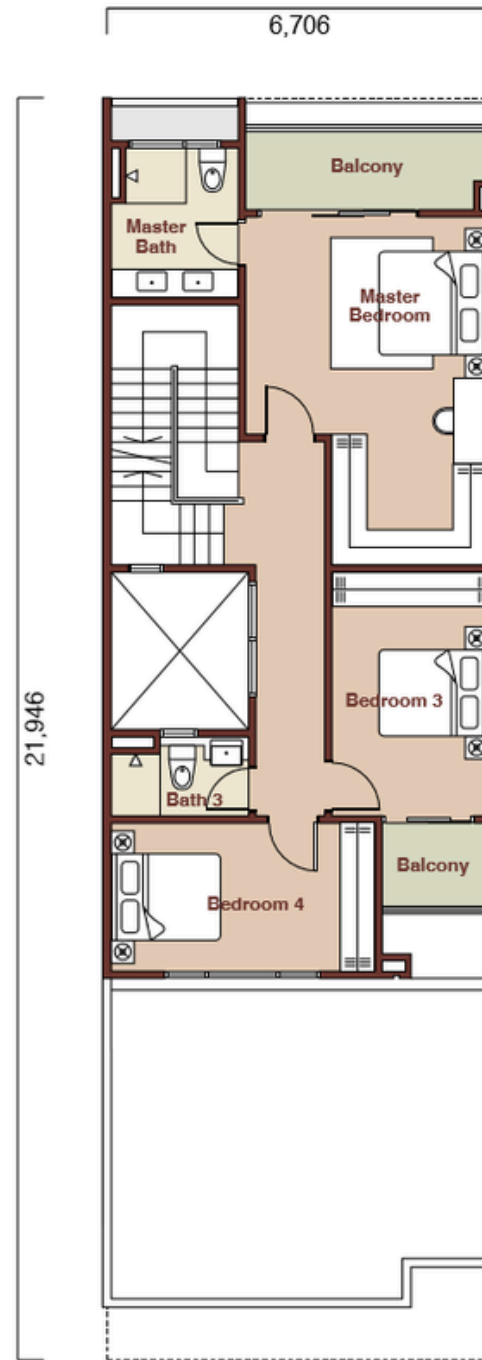
Total Built-up Area
3,150 sf / 293 sm

Total Units
100

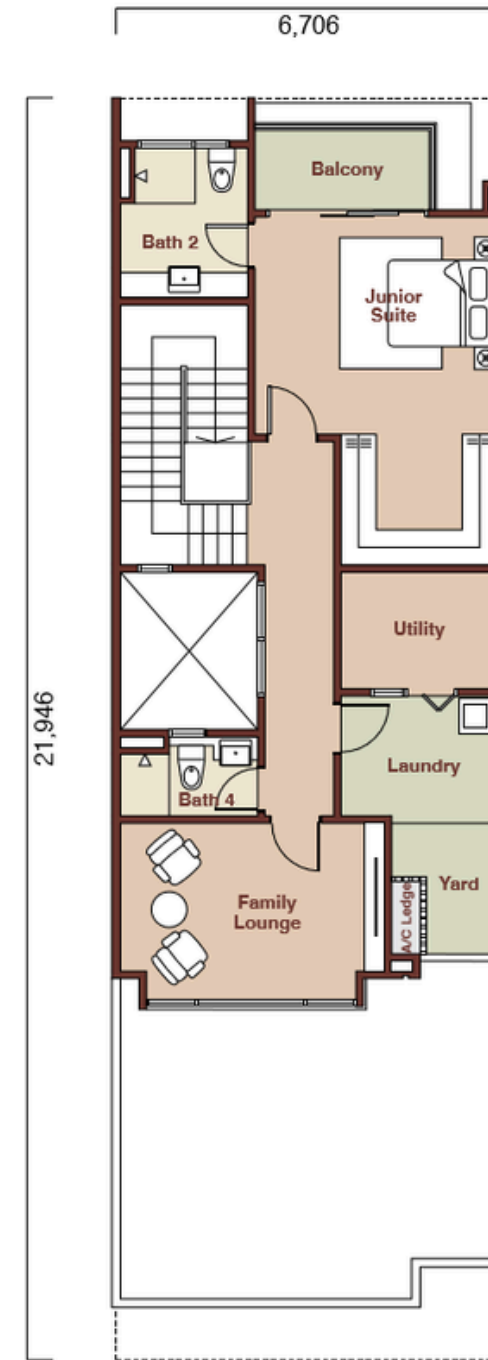
Typical Land Area
1,584 sf / 147 sm



Ground Floor



1st Floor



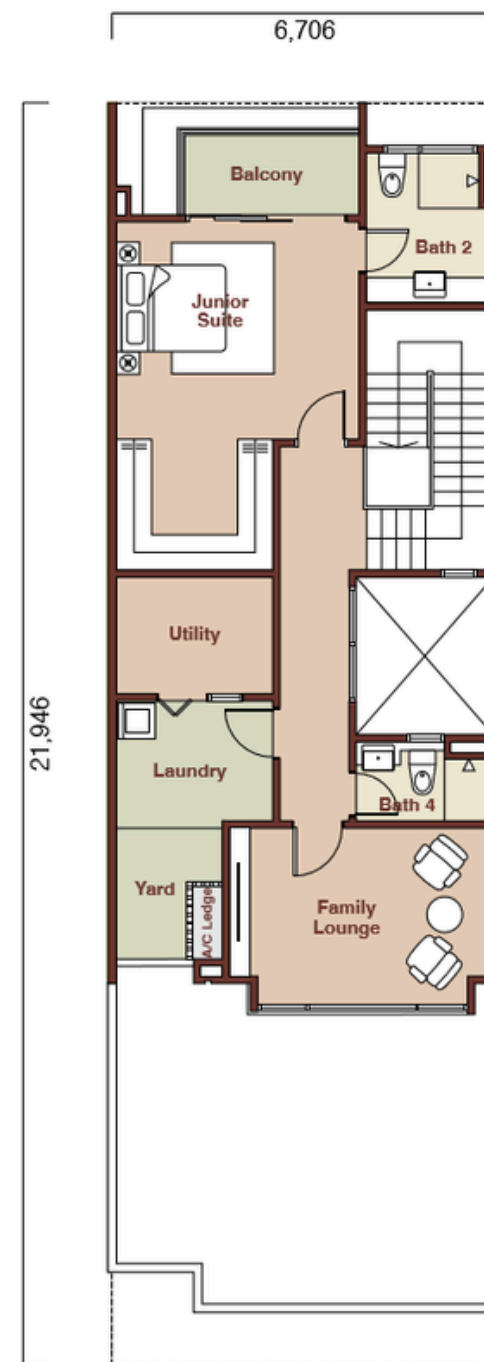
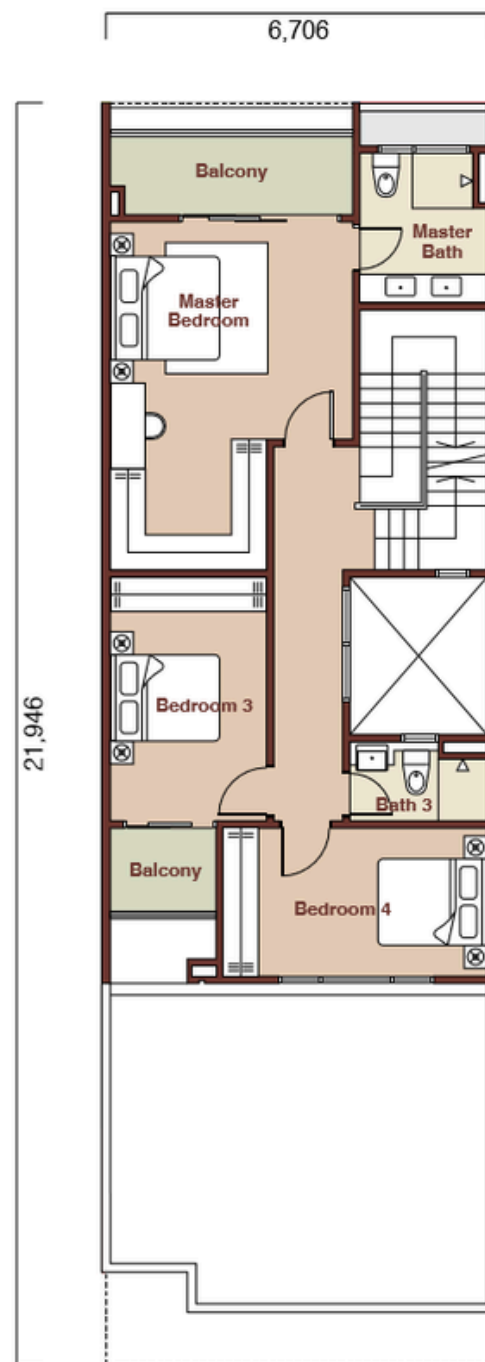
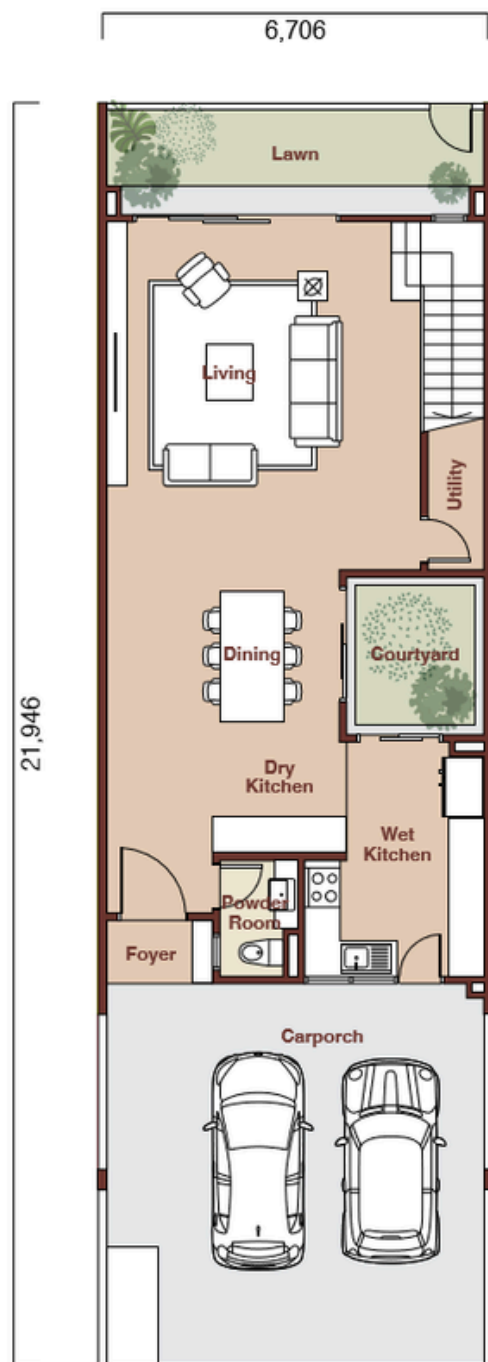
2nd Floor

3-Storey Parkhomes

TYPE **A1**(m)

Intermediate

- 4 Bedrooms
- 4 Baths
- Powder Room
- 2 Utility
- Family Lounge
- Courtyard



Typical Lot
22' x 72'

Total Built-up Area
3,150 sf / 293 sm

Total Units
100

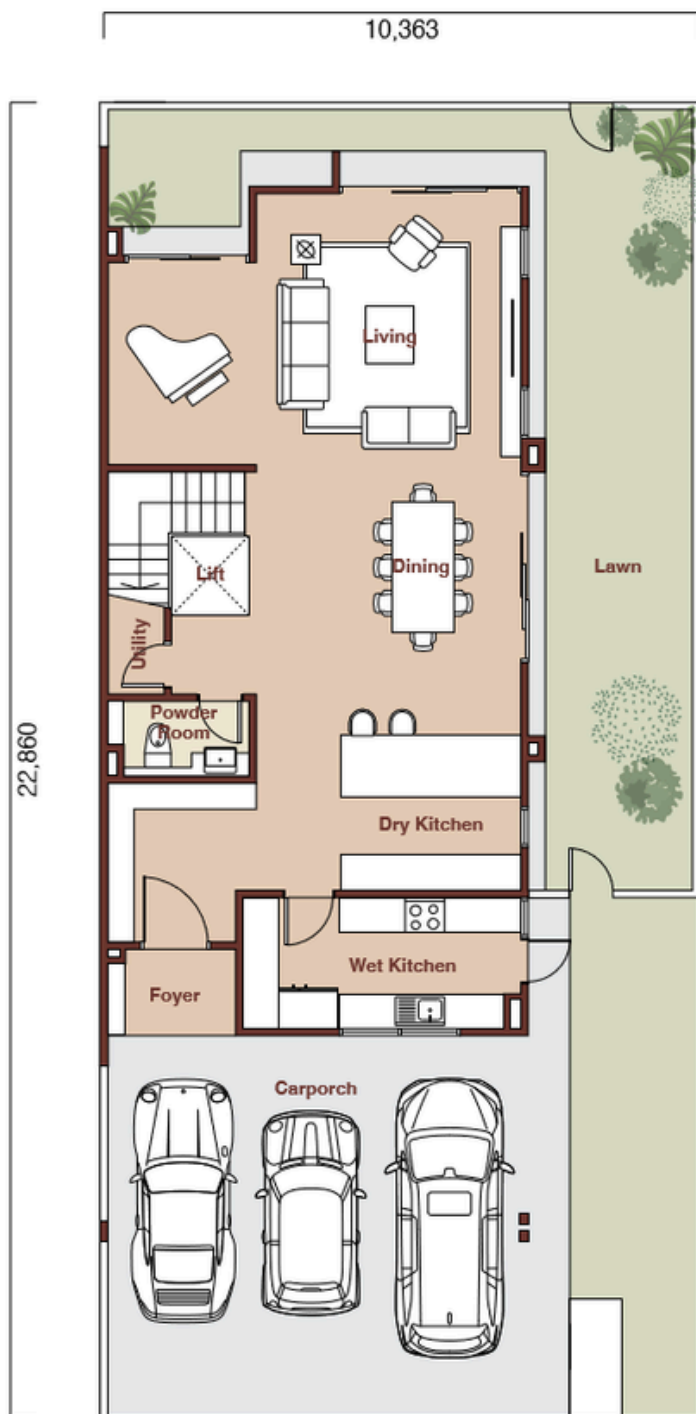
Typical Land Area
1,584 sf / 147 sm

3-Storey Parkhomes

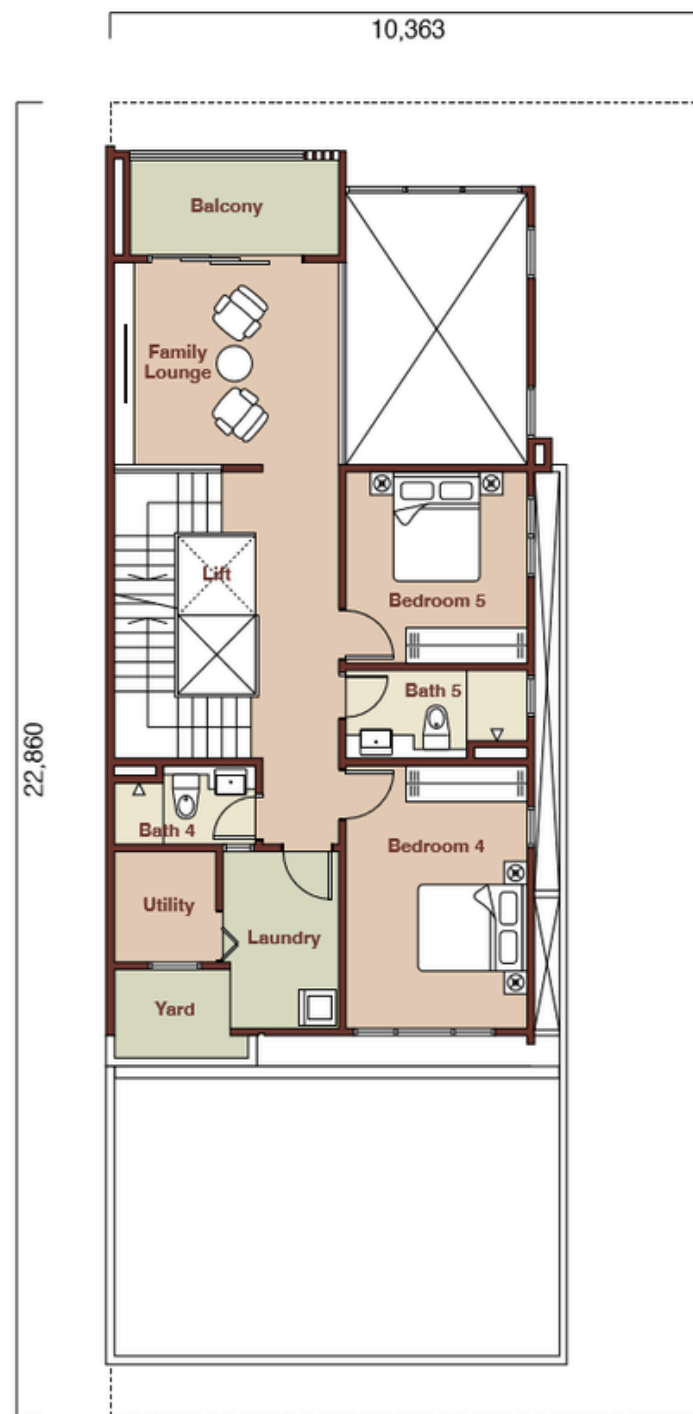
TYPE **A2**

Endlot

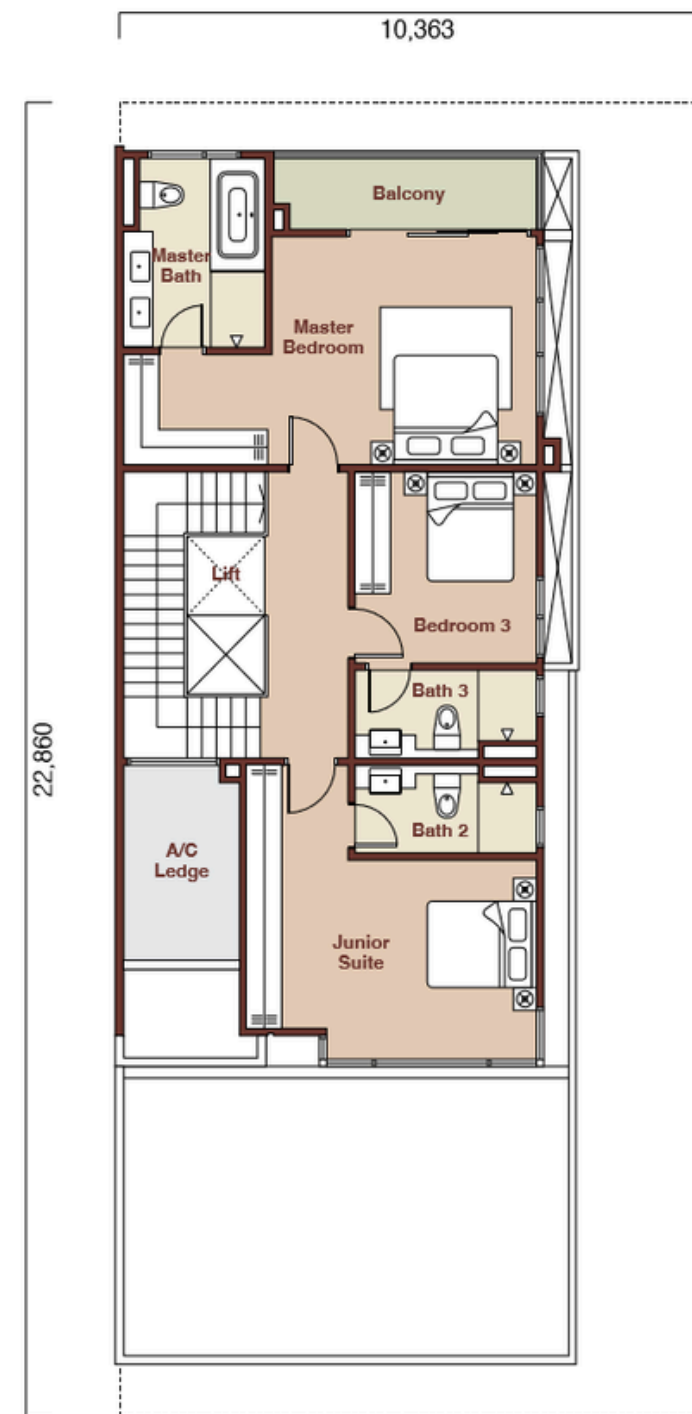
- 5 Bedrooms
- 5 Baths
- Powder Room
- 2 Utility
- Family Lounge
- Lift (Ready)



Ground Floor



1st Floor



2nd Floor

Typical Lot
24'(+10') x 75'

Total Built-up Area
3,820 sf / 355 sm

Total Units
33

Typical Land Area
2,550 sf / 237 sm

3-Storey Parkhomes

TYPE A2 (m)

Endlot

- 5 Bedrooms
- 5 Baths
- Powder Room
- 2 Utility
- Family Lounge
- Lift (Ready)

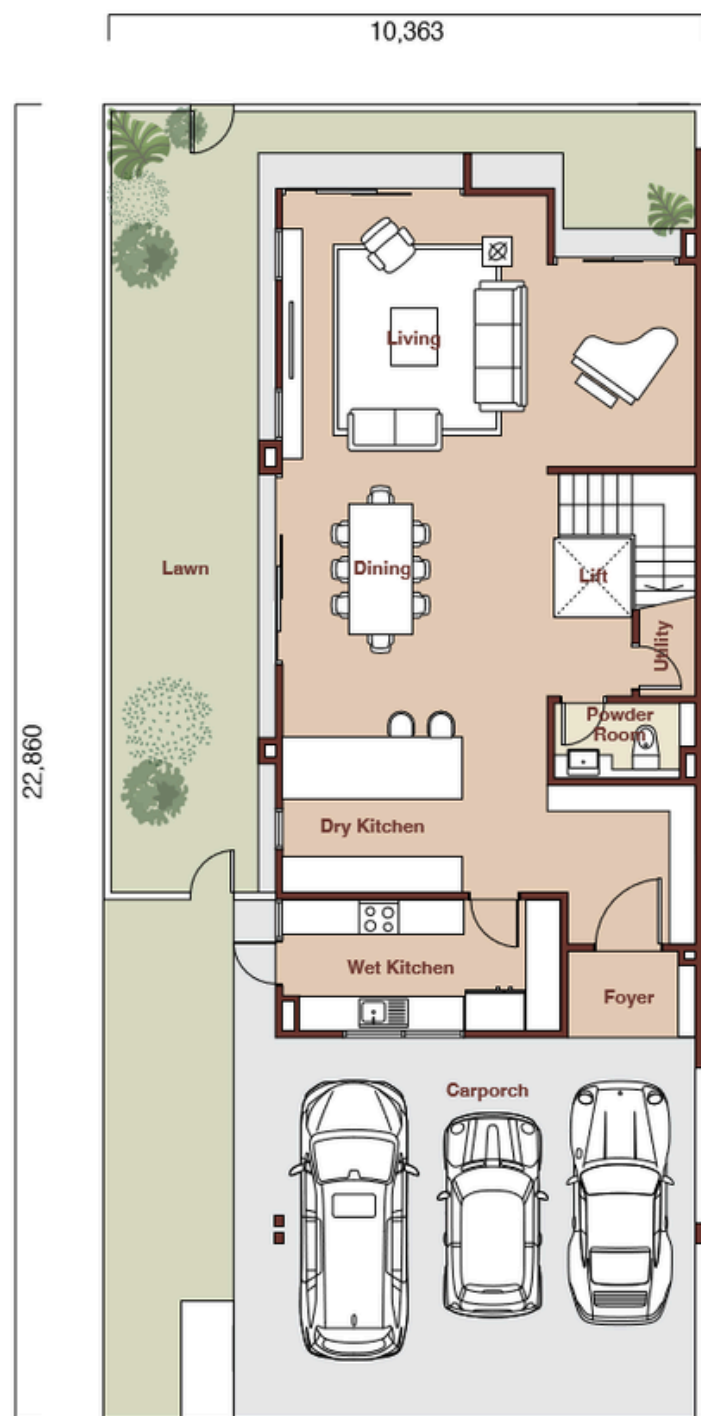


Typical Lot
24'(+10') x 75'

Total Built-up Area
3,820 sf / 355 sm

Total Units
33

Typical Land Area
2,550 sf / 237 sm



Ground Floor



1st Floor



2nd Floor

3-Storey Parkhomes

TYPE **B1**

Intermediate

- 4 Bedrooms
- 4 Baths
- Powder Room
- 2 Utility
- Family Lounge
- Courtyard

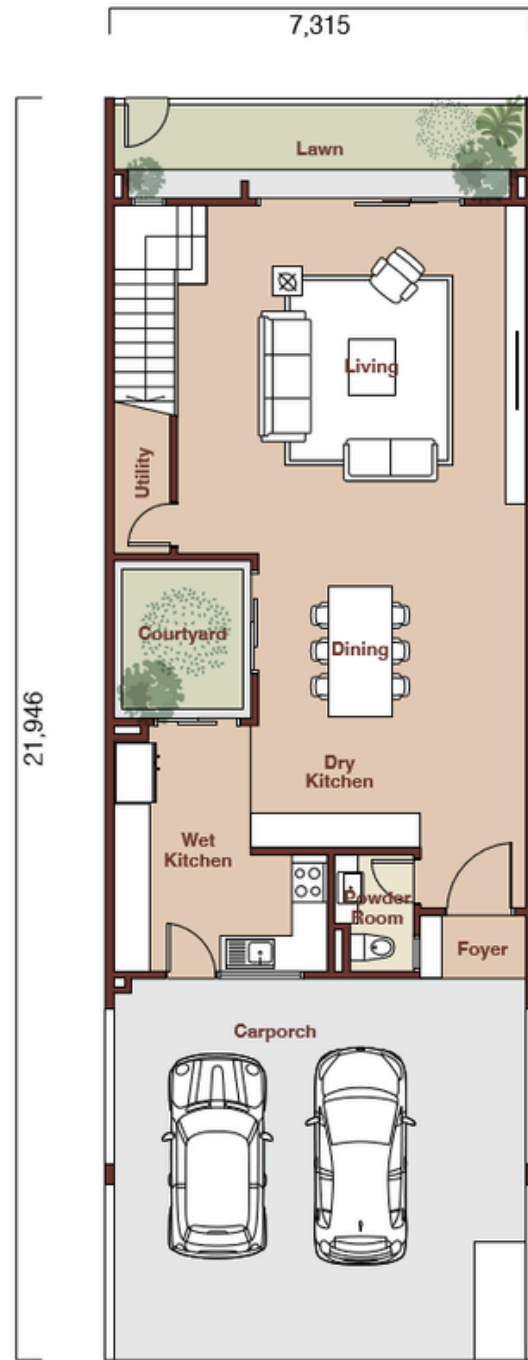


Typical Lot
24' x 72'

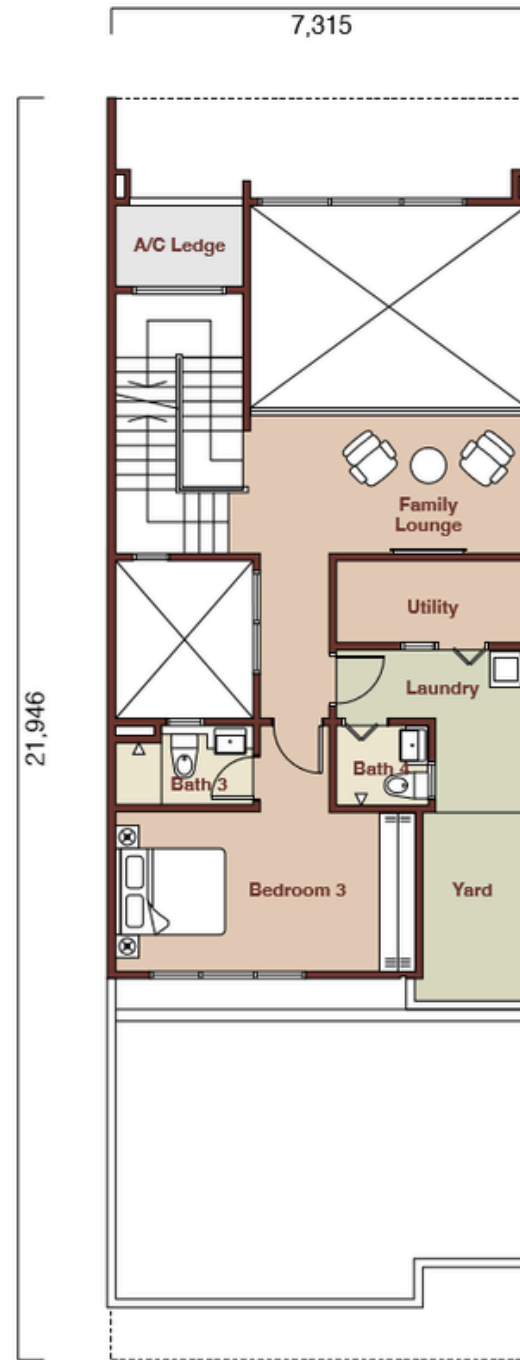
Total Built-up Area
3,210 sf / 298 sm

Total Units
71

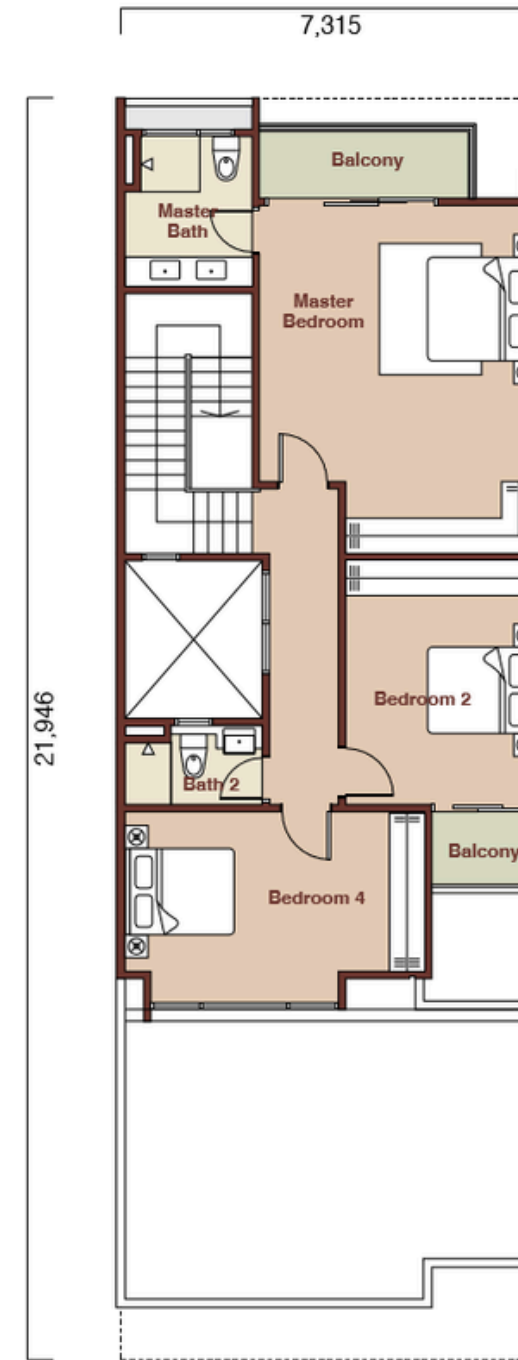
Typical Land Area
1,728 sf / 161 sm



Ground Floor



1st Floor



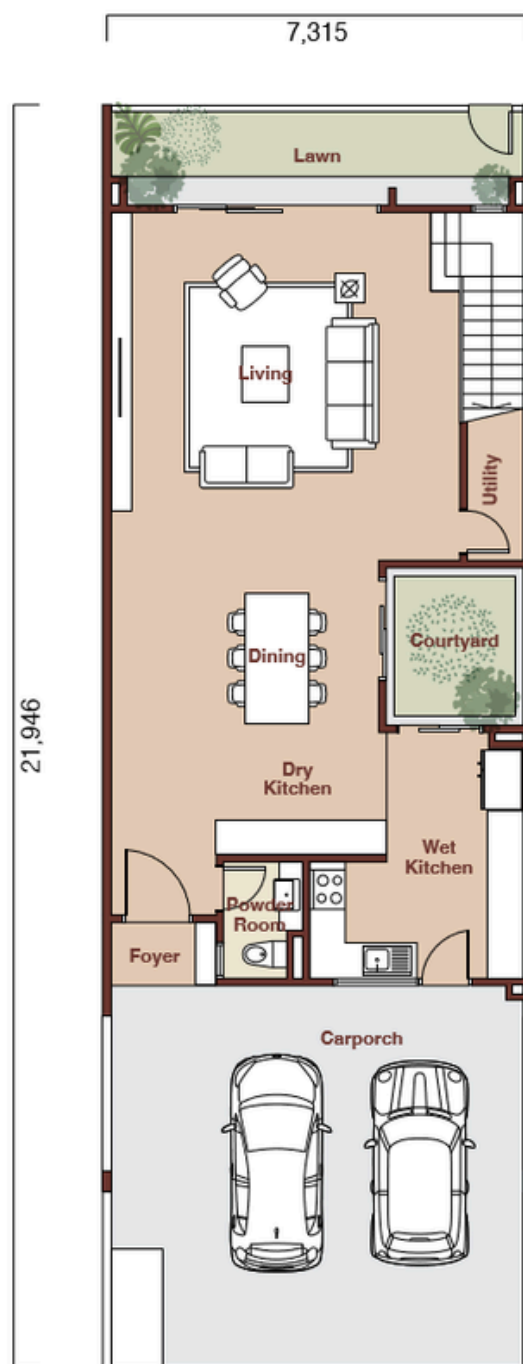
2nd Floor

3-Storey Parkhomes

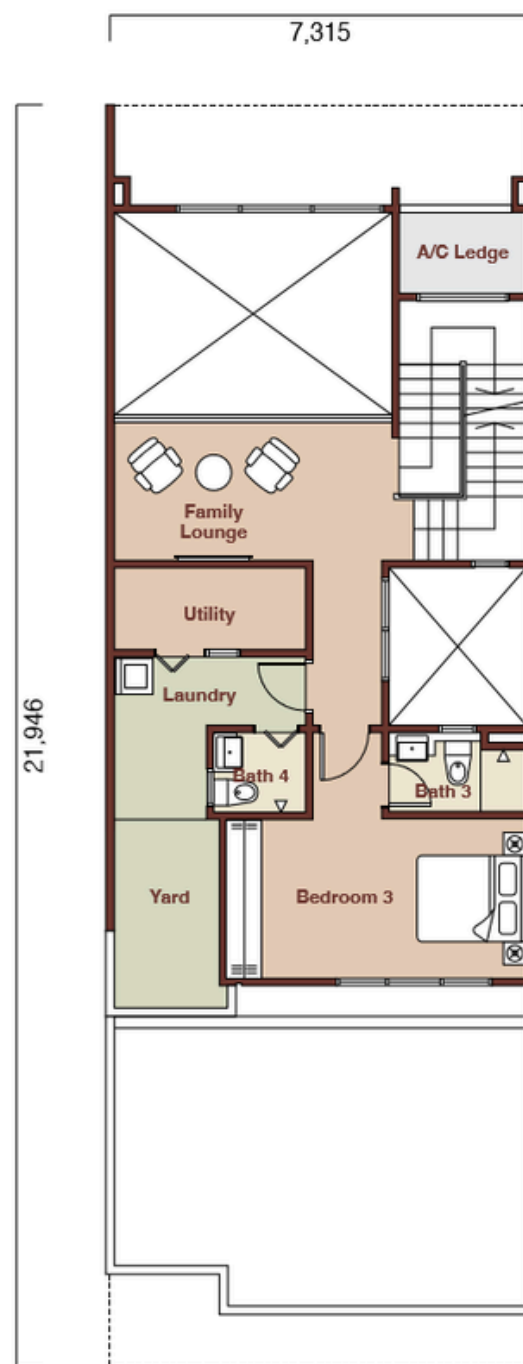
TYPE B1(m)

Intermediate

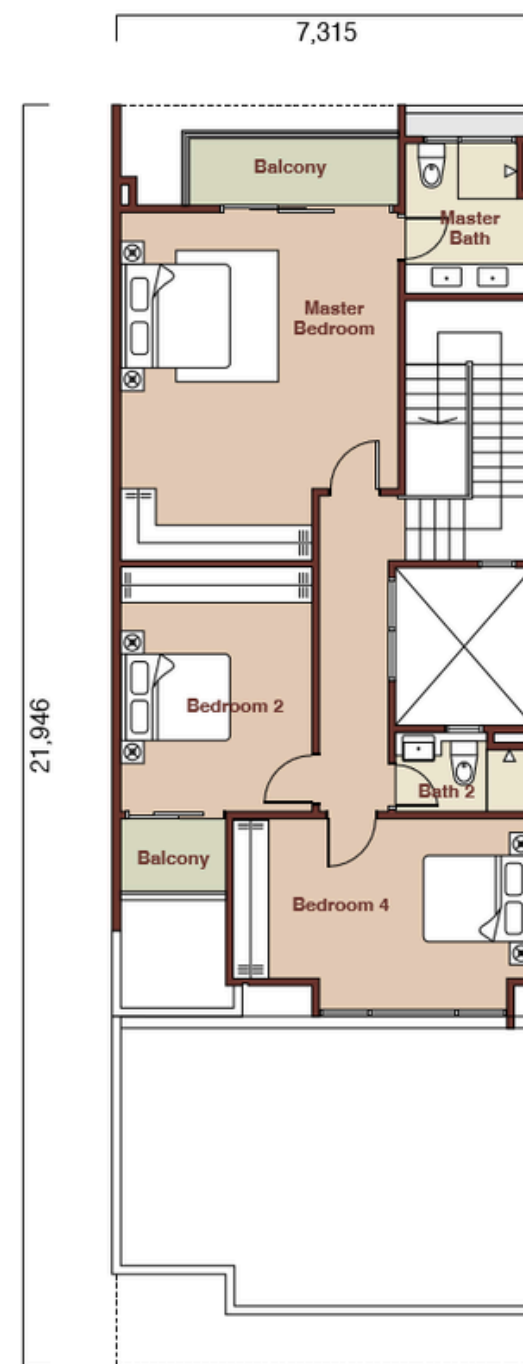
- 4 Bedrooms
- 4 Baths
- Powder Room
- 2 Utility
- Family Lounge
- Courtyard



Ground Floor



1st Floor



2nd Floor

Typical Lot
24' x 72'

Total Built-up Area
3,210 sf / 298 sm

Total Units
71

Typical Land Area
1,728 sf / 161 sm

3-Storey Parkhomes

TYPE B2

Endlot

- 5 Bedrooms
- 6 Baths
- Powder Room
- 2 Utility
- Family Lounge
- Lift (Ready)

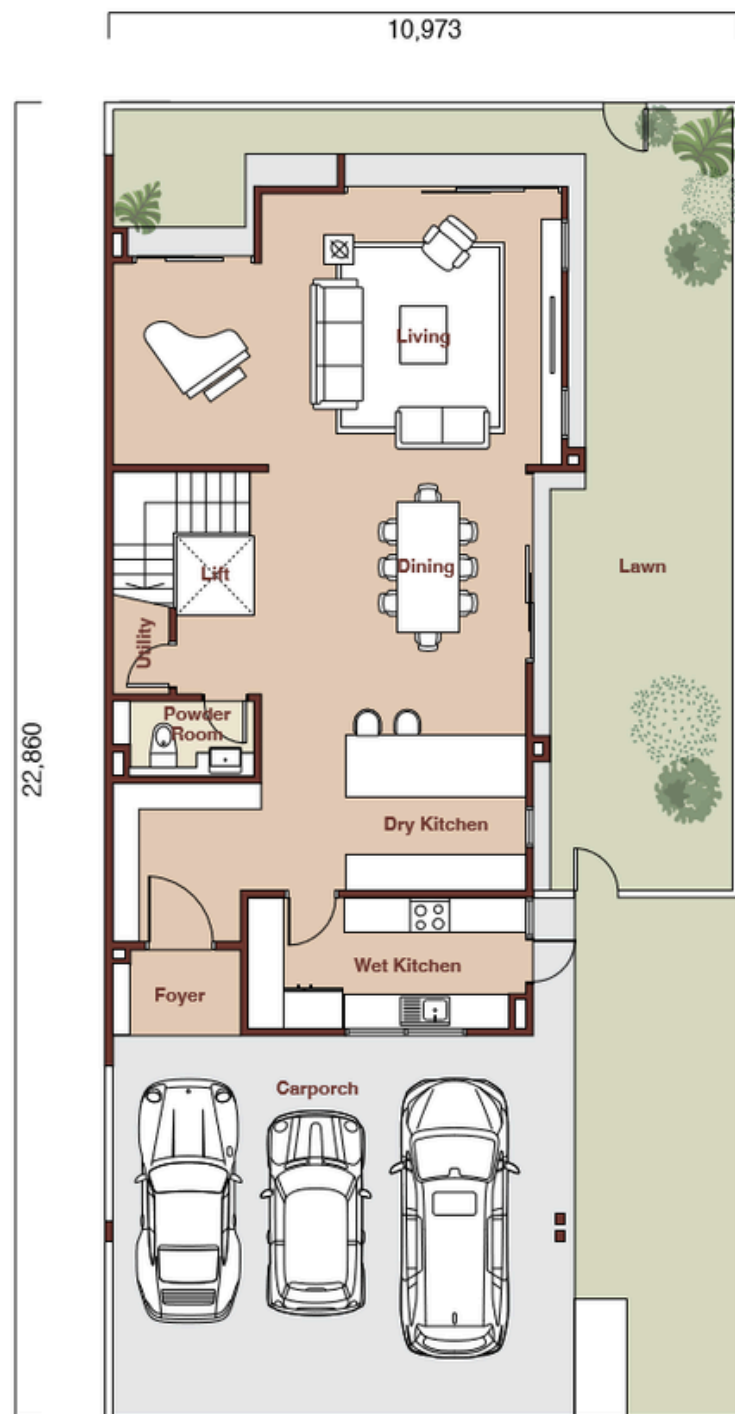


Typical Lot
26'(+10') x 75'

Total Built-up Area
3,980 sf / 370 sm

Total Units
17

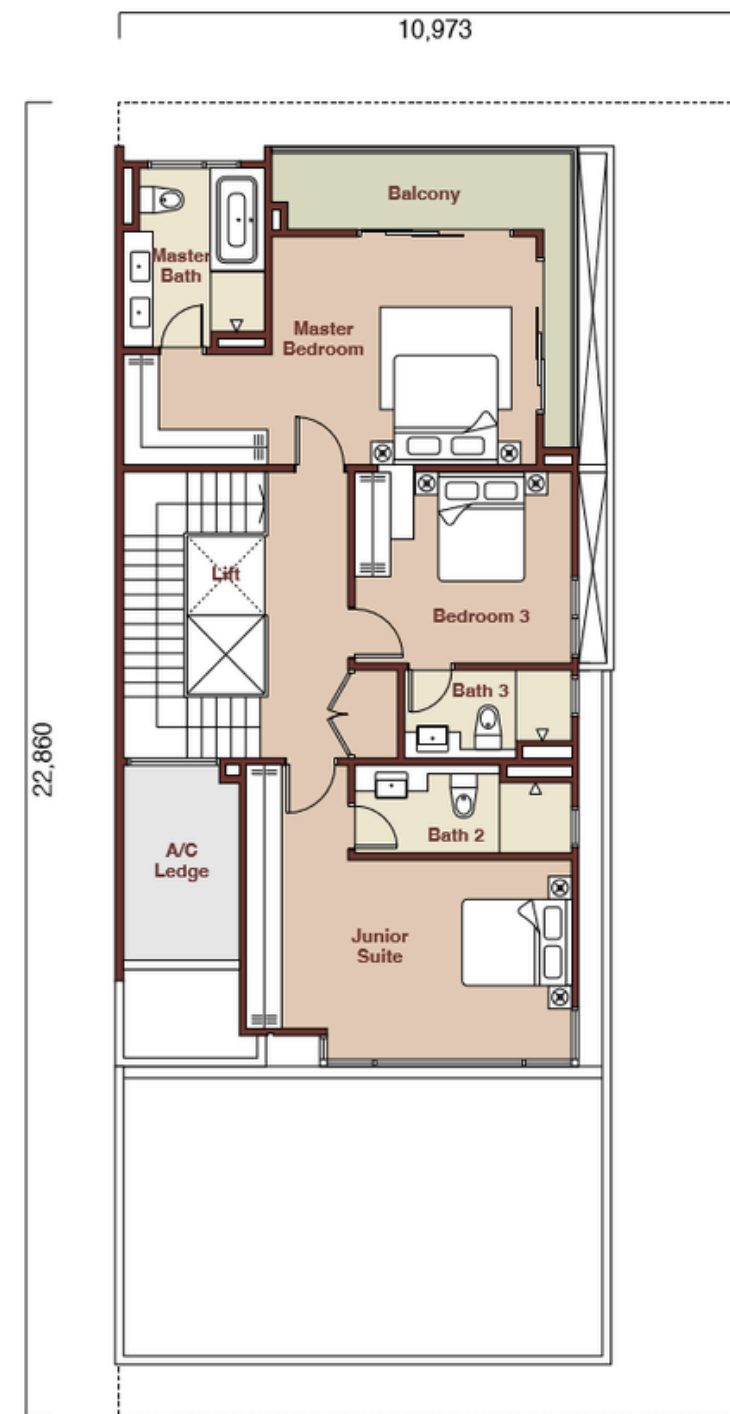
Typical Land Area
2,700 sf / 251 sm



Ground Floor



1st Floor



2nd Floor

3-Storey Parkhomes

TYPE **B2** (m)

Endlot

- 5 Bedrooms
- 6 Baths
- Powder Room
- 2 Utility
- Family Lounge
- Lift (Ready)



Typical Lot
26'(+10') x 75'

Total Built-up Area
3,980 sf / 370 sm

Total Units
17

Typical Land Area
2,700 sf / 251 sm

