

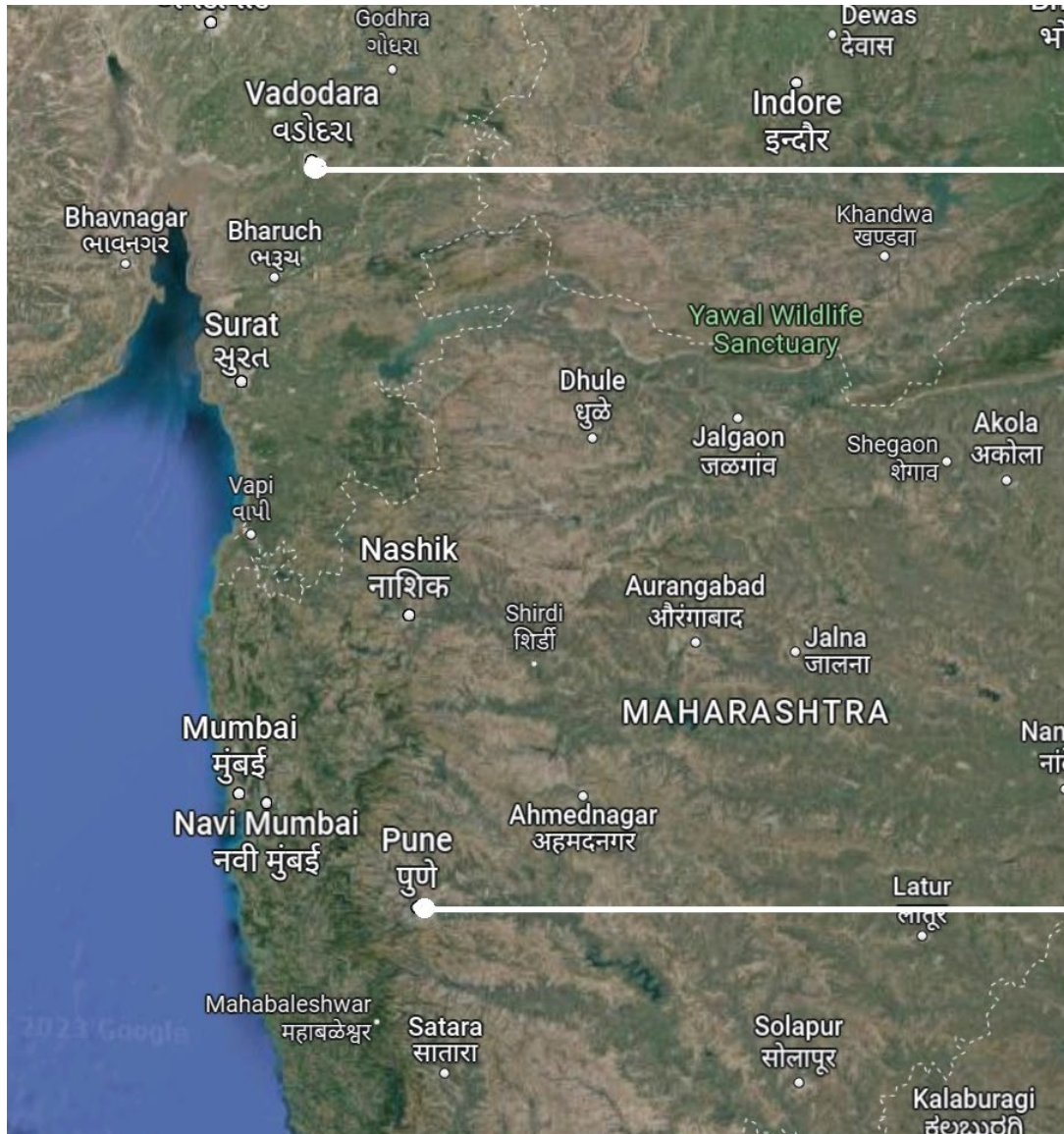
BESTALL – SHARP GROUP

COMPANY PRESENTATION

Welding

CNC Machining

Assembly

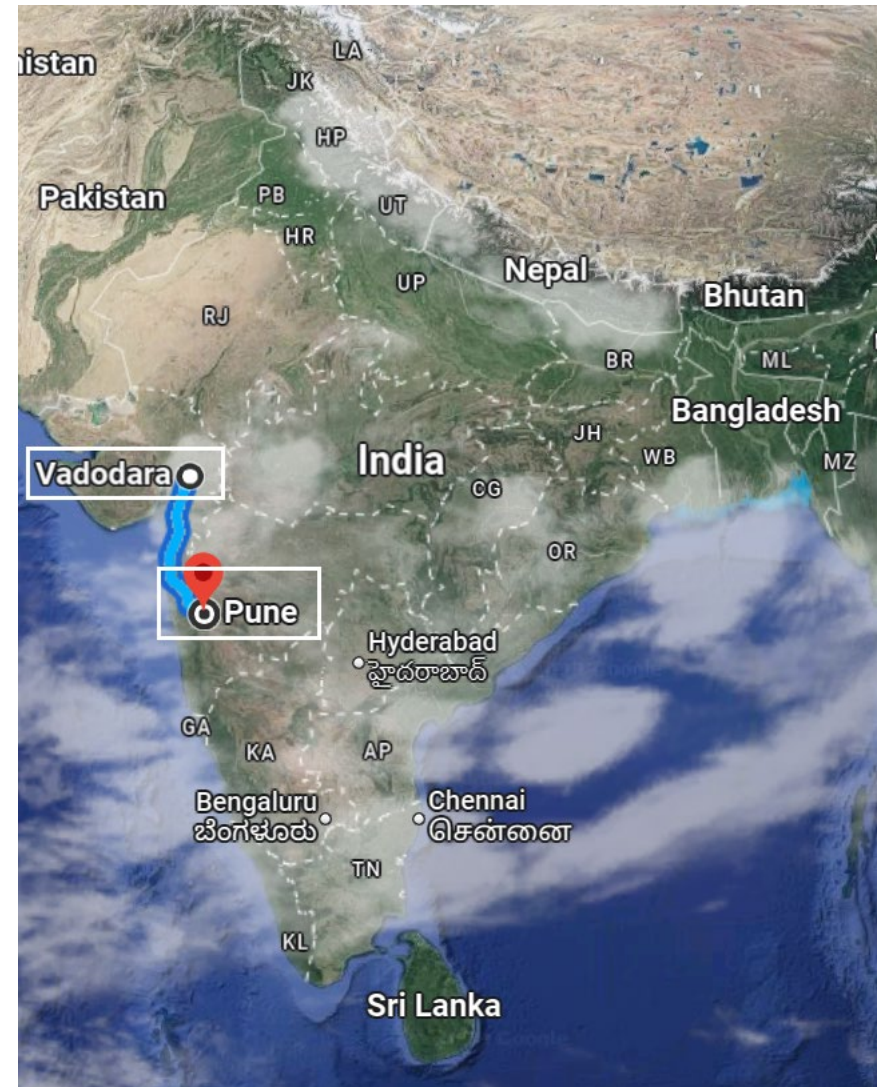


Bestall Machining & Fabrication Pvt. Ltd.
Unit - I
Savli - Vadodara

Bestall Machining & Fabrication Pvt. Ltd.
Unit - II
Savli - Vadodara

Sharp Engineering Services
Unit - I
Talawade - Pune

Sharp Engineering Services
Unit - II
Chinchwad - Pune



Location on the map of India.

Bestall Machining & Fabrication Pvt. Ltd. Unit – I (Savli – Vadodara) Gujarat - India



Nearest Seaport (Preferred) for connectivity

Mumbai (BPT/JNPT) : 560 Kms

Second Optional Port

Mundra : 460 Kms

Nearest Airport (Domestic)

Vadodara (BDQ) : 20 Kms

Nearest Airport (International)

Ahmedabad (AHM) : 108 Kms

Optional International Airport (Preferred) for connectivity

Mumbai : 420 Kms

Nearest Railway Station

Vadodara (BRC) : 24 Kms

Bestall Machining & Fabrication Pvt. Ltd. Unit – II (Savli – Vadodara) Gujarat - India



Nearest Seaport (Preferred) for connectivity

Mumbai (BPT/JNPT) : 560 Kms

Second Optional Port

Mundra : 460 Kms

Nearest Airport (Domestic)

Vadodara (BDQ) : 20 Kms

Nearest Airport (International)

Ahmedabad (AHM) : 108 Kms

Optional International Airport (Preferred) for connectivity

Mumbai : 420 Kms

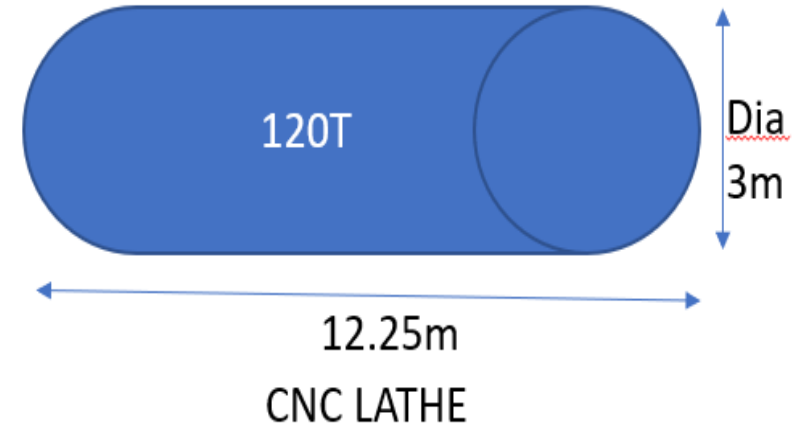
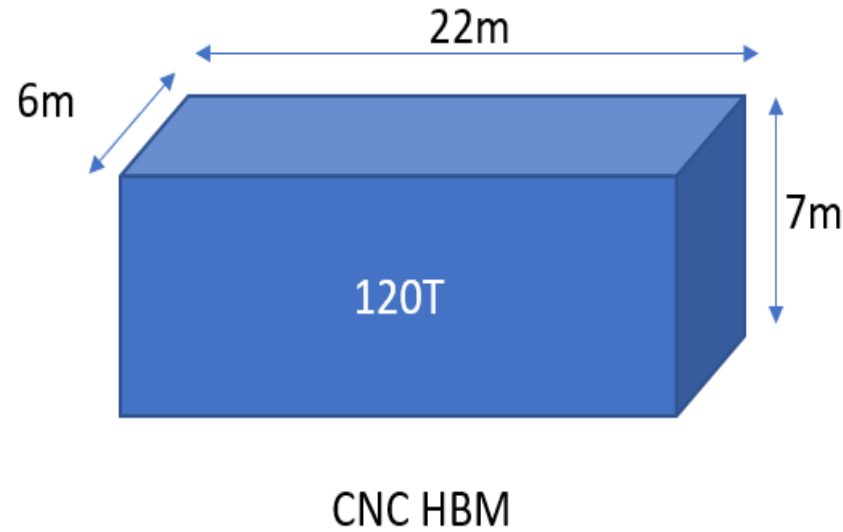
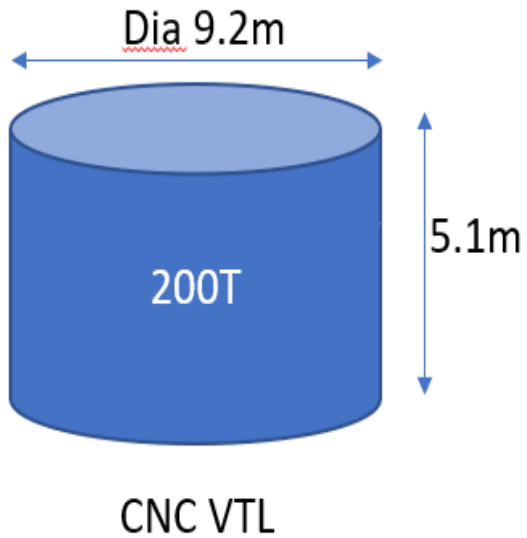
Nearest Railway Station

Vadodara (BRC) : 24 Kms

**** The distance between Unit-I & Unit-II is 900m**

Major highlights of Bestall Machining & Fabrication Pvt. Ltd. (Unit-I & II combined)

Max component Sizes (welded & machined)



Note : The max size of component that can be fabricated is 40x 10m x 10m with max single piece weight of 200 tons.

Machining facilities at Bestall Machining & Fabrication Pvt. Ltd. (Unit-I & II combined)



CNC Horizontal Boring Machine
X – 22m
Y – 7m
Z – 2m , W – 1m
Indexing Table – 4.5m x 4.5m
Weight Capacity – 120 tons
Universal Head
Facing & Turning Head



CNC Vertical Lathe (VTL)
Table Dia – 7.6m
Max Swing – 9.2m
Max Working Height – 5.1m
Tool Travel – 3.5m
Weight Capacity – 250 tons
Grinding Attachment



CNC Horizontal Lathe
Chuck Dia – 2.1m
Max Swing – 3m
Max turning Length – 12.25m
Weight Capacity – 110 tons
Grinding Attachment
Various Stead Rests

Machining facilities at Bestall Machining & Fabrication Pvt. Ltd. (Unit-I & II combined)



CNC HORIZONTAL BORING MACHINE (5-AXIS)
MAKE – WMW Romania
X- 12.5M , Y- 5M
Z (RAM) – 1.2M , W- 1M
INDEXING TABLE- 2.5M X 2.5M
WEIGHT CAPACITY – 40 TONS
CNC FACING HEAD, CONTINUOUS MILLING HEAD
RIGHT ANGLE HEAD , UNIVERSAL MILLING HEAD



CNC VERTICAL TURNING & MILLING MACHINE WITH LIVE SPINDLE & C-AXIS
Make : Toshiba – Japan
Model : TD60/85 CNC
Table Dia : 6000mm , Max Swing : 8500mm , Max Working Height : 4000mm , Max Load : 150 tons
Indexing Positions : 0.001° (Infinite) , Table Speeds : 0.2 – 32 rpm
Spindle Power : 37 KW , Ram Stroke : 2000mm (Milling Ram) / 2300mm (Turning Ram)
Accessories : Grinding Attachment, Angle Head
Universal Head & U-Tronic head

Fabrication facilities at Bestall Machining & Fabrication Pvt. Ltd.

Unit - I

Fabrication Beds :	12m x 12m – 2 Nos 9m x 6m – 1 Nos
MIG Welding Machines :	850A – 8 Nos 600 A – 21 Nos
SAW Welding Machines :	1250A – 3 Nos
TIG Welding Machines :	400A – 6 Nos
Crane Capacity :	125t x 65t + 30t
PWHT Furnace :	12m x 10m x 7m
Hydraulic Press :	1000t
CNC Oxyfuel Cutting :	2.5m x 8m x 300mm

Unit - II

Fabrication Beds :	12m x 12m – 2 Nos 9m x 6m – 1 Nos
MIG Welding Machines :	850A – 8 Nos 600 A – 21 Nos
SAW Welding Machines :	1250A – 9 Nos
TIG Welding Machines :	400A – 6 Nos
Crane Capacity :	200t x 100t + 30t
PWHT Furnace :	12m x 10m x 7m
Hydraulic Press :	1000t
CNC Oxyfuel Cutting :	2.5m x 12m x 300mm

Sharp Engineering Services Unit – I (Talawade – Pune) Maharashtra - India



Shot on OnePlus
By Himanshu K | Bestall-Sharp

Nearest Seaport (Preferred) for connectivity

Mumbai (BPT/JNPT) : 120 Kms

Second Optional Port

Mumbai Port (BPT) : 142 Kms

Nearest Airport (Domestic)

Pune (PNQ) : 17 Kms

Nearest Airport (International)

Mumbai (BOM) : 140 Kms

Nearest Railway Station

Pune (PUN) : 18 Kms

Sharp Engineering Services Unit – II (Bestall Engineering Works) (Chinchwad – Pune) Maharashtra - India



Nearest Seaport (Preferred) for connectivity

Mumbai (BPT/JNPT) : 124 Kms

Second Optional Port

Mumbai Port (BPT) : 146 Kms

Nearest Airport (Domestic)

Pune (PNQ) : 16 Kms

Nearest Airport (International)

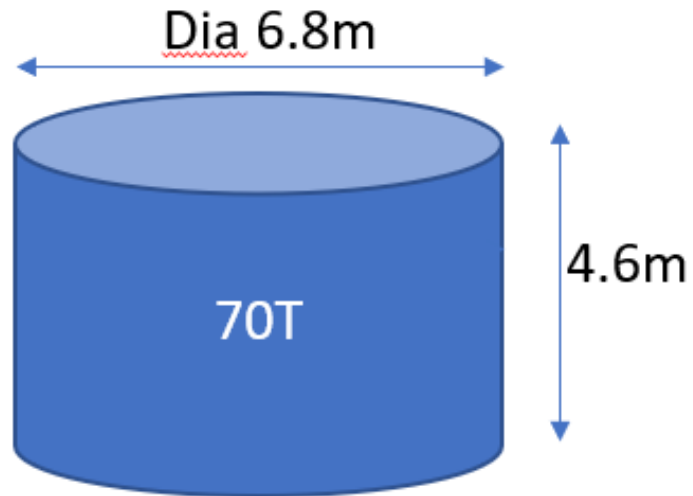
Mumbai (BOM) : 145 Kms

Nearest Railway Station

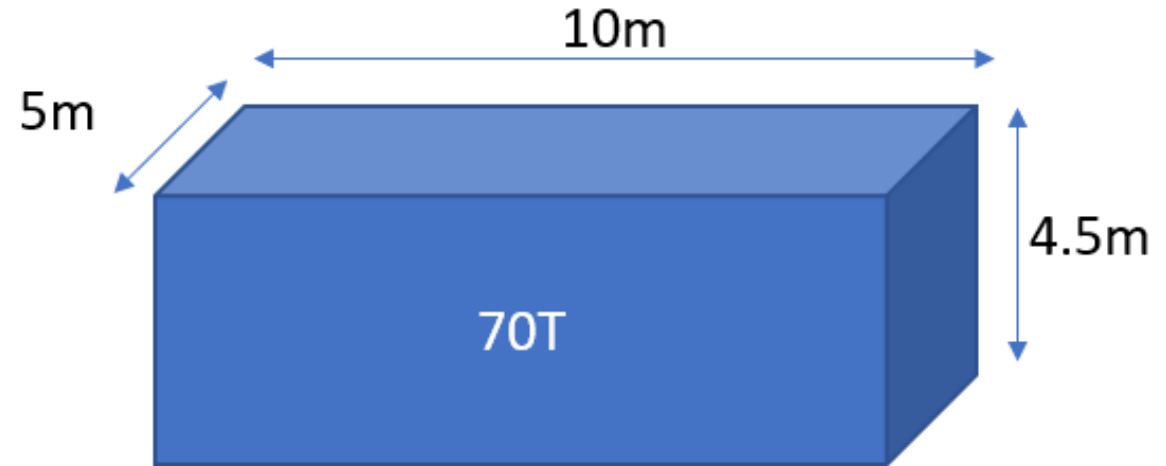
Pune (PUN) : 16 Kms

Major highlights of Sharp Engineering Services. (Unit-I & II combined)

Max component Sizes (welded & machined)



CNC VTL



CNC HBM

Note : The max size of component that can be fabricated is 20 x 9m x 9m with max single piece weight of 70 tons.

Machining facilities at Sharp Engineering Services. (Unit-I & II combined)



CNC Horizontal Boring Machine-1
X – 10m
Y – 4.5m
Z – 1.5m , W – 0.7m
Indexing Table – 2.5m x 3m
Weight Capacity – 35 tons
Universal Head
Facing & Turning Head



CNC Horizontal Boring Machine-2
X – 10m
Y – 4m
Z – 1.2m , W – 0.8m
Indexing Table – 3.5m x 3m
Weight Capacity – 70 tons
Universal Head
Facing & Turning Head



CNC Horizontal Boring Machine-3
X – 4m
Y – 3m
Z – 1.5m , W – 0.7m
Indexing Table – 2.5m x 3m
Weight Capacity – 25 tons
Universal Head
Facing & Turning Head

Machining facilities at Sharp Engineering Services. (Unit-I & II combined)



CNC Vertical Lathe (VTL)-1
Table Dia – 6.3m
Max Swing – 6.9m
Max Working Height – 3.7m
Tool Travel – 2.5m
Weight Capacity – 100 tons
Grinding Attachment



CNC Vertical Lathe (VTL)-2
Table Dia – 4.6m
Max Swing – 5.2m
Max Working Height – 4.7m
Tool Travel – 2.5m
Weight Capacity – 70 tons
Grinding Attachment



CNC Vertical Machining Center
X – 2.5m
Y – 1.7m
Z – 1.2m
Max Height – 1.5m
Weight Capacity – 15 tons
Universal Head
Facing & Turning Head

Fabrication facilities at Sharp Engineering Services.

Unit - I

Fabrication Beds :	12m x 12m – 2 Nos 9m x 5m – 1 Nos
MIG Welding Machines :	850A – 5 Nos 600 A – 24 Nos
SAW Welding Machines :	1250A – 3 Nos
TIG Welding Machines :	400A – 4 Nos
Crane Capacity :	70t x 35t + 30t
PWHT Furnace :	12m x 10m x 7m
CNC Oxyfuel Cutting :	2.5m x 8m x 300mm

Unit - II

Fabrication Beds :	9m x 5m – 2 Nos
MIG Welding Machines :	600A – 12 Nos
SAW Welding Machines :	1250A – 1 Nos
TIG Welding Machines :	400A – 6 Nos
Crane Capacity :	25t x 10t + 10t
CNC Oxyfuel Cutting :	2.5m x 8m x 300mm

Industries Served

Steam & Gas Turbines

- HP , LP , IP Casings
- Exhaust Casings
- Base Frames
- Bearing Pedestals & Deflectors
- Diaphragms & Blade carriers
- Casted steam turbine casings
- Turbine & Generator shafts

Customers



Industries Served

Hydro Turbines

- Head Covers & Bottom rings
- Discharge casings & blades
- Hubs & Stay rings
- Thrust brackets
- Stator Frames
- Valve Bodies & Discs
- Turbine & Generator shafts

Customers



GE Renewable Energy



Industries Served

Aerospace

- Launch Vehicle Rings
- Transition Cones
- Crew Module Hardware
- Regulator Segments
- Domes
- ISO Panels & Flex plates

Customers



Industries Served

Defence

- ICBM missile tilt beams & launchers
- Missile cassettes & frames
- Modular bridges
- Helicopter landing grids
- Naval components
- UVLM launchers

Customers



Mazagon Dock Shipbuilders Limited
(Formerly known as: Mazagon Dock Limited)
CIN : U35100MH1934GOI002079
(Ministry of Defence, A Govt. of India Undertaking)
SHIP BUILDER TO THE NATION



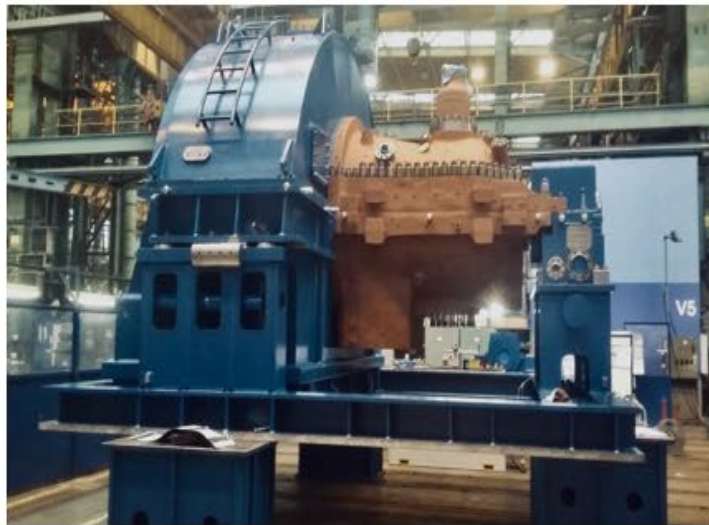
Industries Served

General Engineering

- Components for earth moving equipment.
- Components for machine tools & presses.
- Parts of paper machines
- Centrifugal decanter frames.
- Defence components.
- Gear components.

Customers





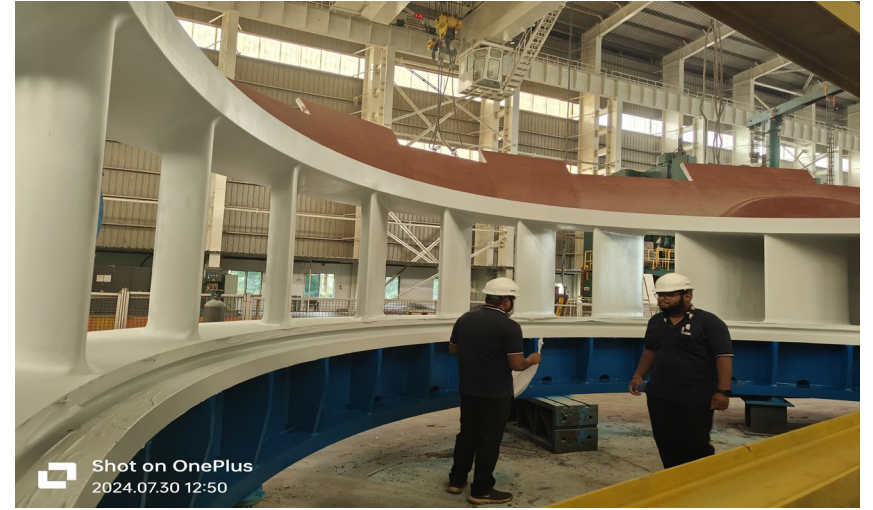














Shot on OnePlus
2024.07.30 13:18







Email : info@bestallsharp.com
himanshu@bestallsharp.com

Contact : +91 9545451357
+91 9545451354

Visit our LinkedIn page







Head Office : C/o Bestall Engineering Works , Plot No.85, Block D-III, MIDC, Chinchwad, Pune - 411019 (Maharashtra), India.
Pune Works : Sharp Engineering Services , Plot No.02, Gut No.89, Jyotiba Nagar, Talawade, Pune - 412114 (Maharashtra), India.
Vadodara Works : Bestall Machining & Fabrication Pvt.Ltd. , Plot No.734, Phase-III, GIDC Savli, Vadodara - 391775 (Gujarat), India.