

YOYOBLUE





 YOYOBLUE

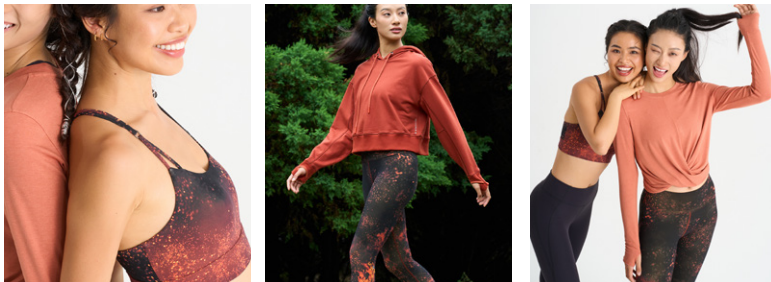
# Relaxation & Enjoyment



“Burning” Original Printed Products

The power of women accompanies the awakening of the soul, like a warm flame radiating a freelight from the inside out

# BLAZING ELEGANCE





**Sparkling Starfire** - This design is derived from the dynamic state of flames as they burn, emitting radiant light and heat in all directions. The outer rim of the sparks reaches upwards, creating a burst of sparkling points that resemble a starry galaxy, dazzling and captivating.



**Sweet and Cool Flames** - Inspired by Nature's Volcanic Eruption, featuring a gradient eruption pattern of orange-red and golden flames, intertwined with a net-like pattern reminiscent of continuous volcanic activity.



**Lava Impression** - The fiery red eruption of magma, in stark contrast with the deep gray rocks, creates a visually stunning and awe-inspiring experience, leaving a profound impression of humanity's exploration of nature.



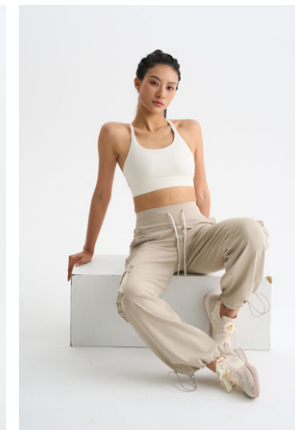
# LEISURE ELEGANCE



## LEISURE ELEGANCE

Combining the comfort and convenience of casual sportswear with the elegant charm of Oriental elements, this collection features lightweight and breathable fabrics that provide freedom and comfort in any setting. The unique designs integrate Oriental aesthetics into urban life, showcasing the distinctive allure and profound essence of Eastern culture.

Colours Available:



# WARM FLEECE FABRIC

## WARM FLEECE FABRIC 57.3%Rayon 38.2% Acrylic 4.5%Spandex

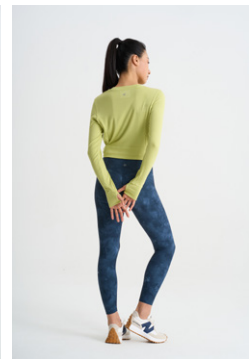
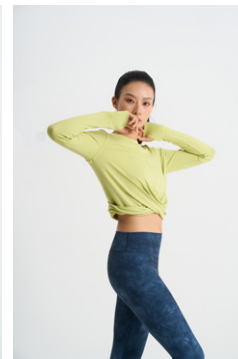
It adopts a blend of Antaibei antibacterial fibers and Warmlysoft heat-retaining and heat-generating fibers. Antaibei's injection spinning active antibacterial technology has an inhibitory effect on microorganisms such as bacteria, fungi, and viruses, and can also effectively eliminate odors. The Warmlysoft superfine anti-pilling acrylic fiber boasts multiple advantages such as heat generation, humidity regulation, warmth retention, and soft touch, significantly enhancing the wearing experience.



Colours Available:



Colours Available:



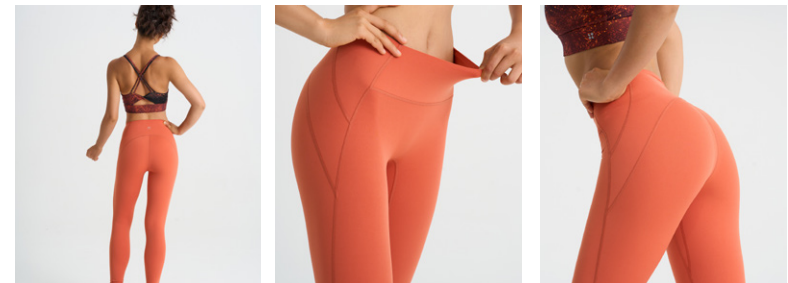
# Rhythm Of Enjoyment





Specifically tailored for Asian women, the 3D Carved Series combines exquisite tailoring craftsmanship with unique design concepts to allow every woman to showcase elegant and firm curves. Utilizing advanced 4D cutting technology, the series meticulously sculpts body contours through zonal precision carving, ensuring that every detail is meticulously refined.

# 3D CARVED SERIES





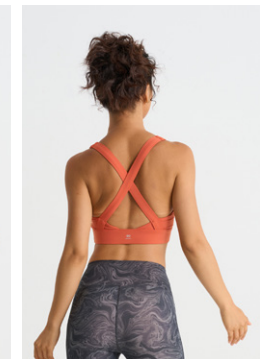
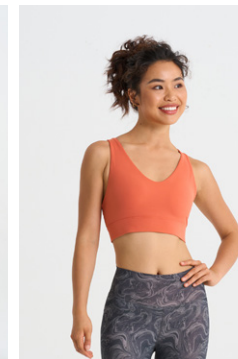
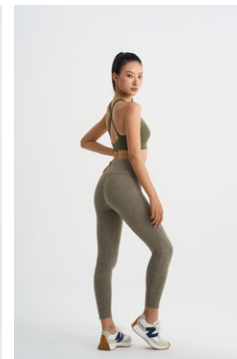
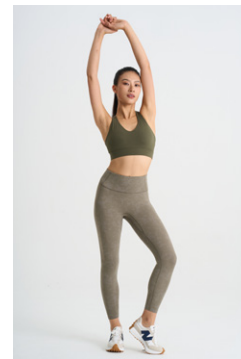
Colours Available:



Colours Available:



Whether it's the waist, hips, or leg lines, they are all perfectly showcased and sculpted. When worn, every inch of skin feels gently caressed, providing unparalleled comfort and confidence, whether worn for daily activities or during sports and fitness routines.





CRYSTAL ICE IMAGERY

**Icefield** \_ Inspired by polar glacier photography, at the end of the world, the glaciers stretch endlessly, seemingly reaching the origin of frost. Despite the chill, they embody the power of life in stasis; the natural landscapes of polar glaciers are transformed into clothing patterns, bringing forth a fresh visual experience.



CRYSTAL ICE IMAGERY

**Ice Stalactite** \_ Inspired by the growth process of ice, the designer envisioned it as a blossoming flower of ice, quickly solidifying from a point into ice stalactites, expanding in various directions to form a complex spatial pattern of icicles.

# UNIQUE PATTERN

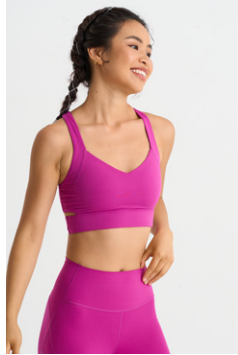


TIGER STRIPES

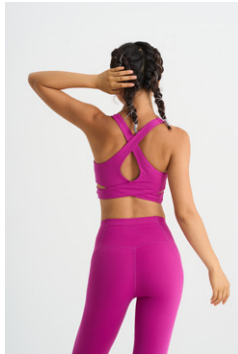
JUICY CHERRIES

MIDNIGHT STARRY SKY

# RUNNING PERFORMANCE SERIES



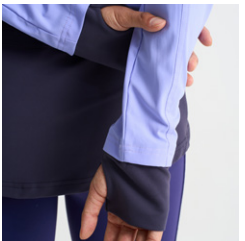
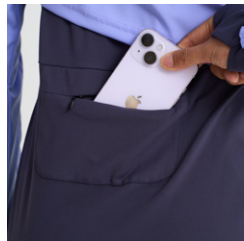
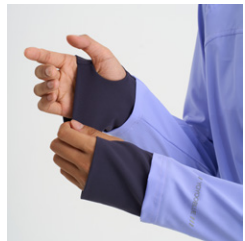
Colours Available:



YOYOBLUE

2024 A/W

Rhythm Of Enjoyment



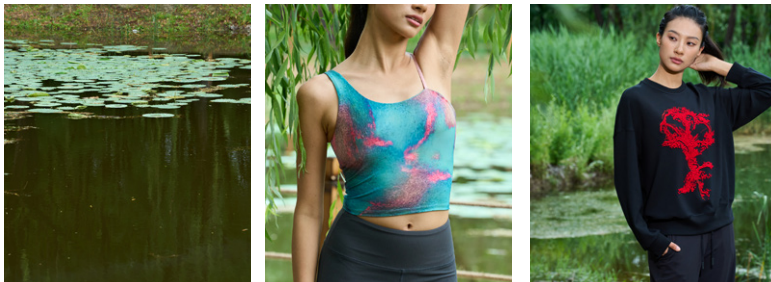
# Self-Appreciation



## "Melting" Original Print

In the hustle and bustle of the city, we return to our true selves, blend with nature, trace our traditional roots, blend ice and fire, and bloom with new vitality.

# FLOWING COLORS FUSION





**Between Pink and Blue** - A poetic scroll of the ancient towns in the south of the Yangtze River, with misty rain over the region; it feels as if one has traveled back in time to a serene and ancient era. Cobblestone paths, ancient dwellings, bridges over babbling streams, everything is so leisurely and content. Yet, nothing captivates more than the misty scenery of the south of the Yangtze River.



**When the Wind Rises**

**Again** - A gentle breeze arises, swaying the green leaves apart, as if about to spread vivid hues of green across the paper. Layers of greens in various hues overlap, forming a landscape reminiscent of an ink painting. It invites one's heart to dance in harmony.





**Red Lining** \_ The pattern is inspired by the fact that this year is the Year of the Snake. Snake patterns are ancient auspicious motifs. In ancient times, snakes were regarded as divine beings, lurking in the abyss and capable of bringing clouds and rain. The stone carvings of Wuliang Temple depict Fuxi and Nuwa, who are also depicted with human heads and snake bodies, emphasizing their divine status. This shows that snake patterns have a long history and are imbued with auspicious meanings. The snake's body bends and twists freely, exhibiting an elegant and fluid dynamic beauty. The pattern is crafted into a winding and zigzag shape using scale-like graphics, combined with a base of varying shades of red, resulting in an exquisite design.



**Flame Cloud** \_ Inspired by a plump flower in the garden that has been turned over by the wind, this design employs two embroidery techniques in craftsmanship to enrich the otherwise simplistic outline pattern. The colors chosen are the passionate and vibrant hues of national red, paired with black fabric, creating a striking contrast.







YOYOBLUE

In one, don't told you yet,  
in words of you, I see  
being your best,  
and things are  
tough, I see you.

