

CONTAINERS

If you are looking for a mobile space solution that is economic, practical and functional then **JCC Group - Prefabex** container is the right solution for you.

JCC Group - Prefabex containers come in standard dimensions as well as customized ones.

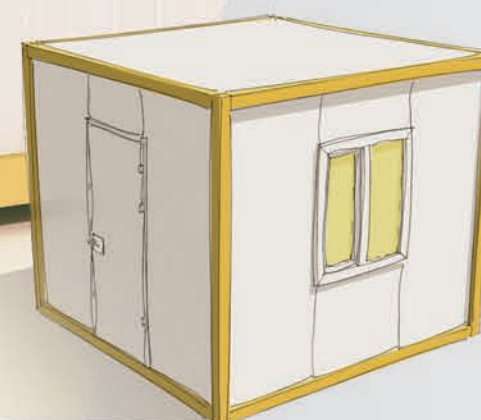
The advantages you will enjoy with **JCC Group - Prefabex** containers are:

- ⌘ Economic price
- ⌘ Quick assembly
- ⌘ Excellent insulation for both heat and sound
- ⌘ Ability to expand by joining many units together
- ⌘ Wide range of additional options and accessories.

Thanks to their sophisticated modular design, PREFABEX containers can be used as individual units or joined together to form 3 storey buildings that can be used as employee accommodation, workers' accommodation, bank branches, classrooms, clinics or sales offices.

OPTIMAL SPACE SOLUTIONS

JCC Group - Prefabex offers many insulation options including EPS (polystyrene foam), Rock wool or Polyurethane.



Emergency Accommodation Units:



JCC Group - Prefabex standard containers come in two different width options that are 2.4 and 3 m. As for the length it can be between 3 and 12 m according to customer request. a standard 3x7 m container includes 1 door, 2 windows, light fixtures, sockets and fuse box. Partitions, doors, windows, transoms, wc and shower units can be added upon request.

300 x 700 :



FOR ALL REQUIREMENTS



JCC Group - Prefabex containers are produced under strict quality control and factory environment as demountable or flat pack system. Using the flatpack system, up to 10 units of 2.3x6 m containers can be transported in one 40' HC container.

As for the demountable system (container shipped as profiles), 10 units of 3x7 m containers can be transported in one 40' HC container.

JCC Group - Prefabex containers are available in various sizes and different layout options.

The modular design of JCC Group - Prefabex containers allows easy modification to suit every customer's need. You can add sandwich panel partitions according to the required layout. Furthermore, there is a wide range of options that can be included such as wc/shower unit, kitchenette, curtains, shutters, washing basin...etc.



Dimensions (cm):

240x240, 240x300, 240x400, 240x500, 300x300, 300x400 x 300x500, 240x600, 300x700, 300x900, 300x1200, 400x1200

Height: 260 cm



General Technical SPECIFICATIONS

Structure:

Special cold roll formed galvanized steel profiles with thicknesses between 1.5 and 2 mm. All connections are done by seamless technology that uses bolts and nuts.

Roof and wall panels:

Roof and wall are produced as 5 cm thickness sandwich panels with external and internal surfaces from 0.45 mm thickness painted galvanized steel sheets.

Insulation:

45 mm thickness polystyrene foam 16 kg/m³ density
Rockwool or polyurethane can also be chosen by customers for insulation. Floor insulation can also be considered upon request.

Floor covering:

16 mm thickness cement board + 2 mm PVC vinyl
Floor Load:
200 kg/m²



LEB: +9613979909

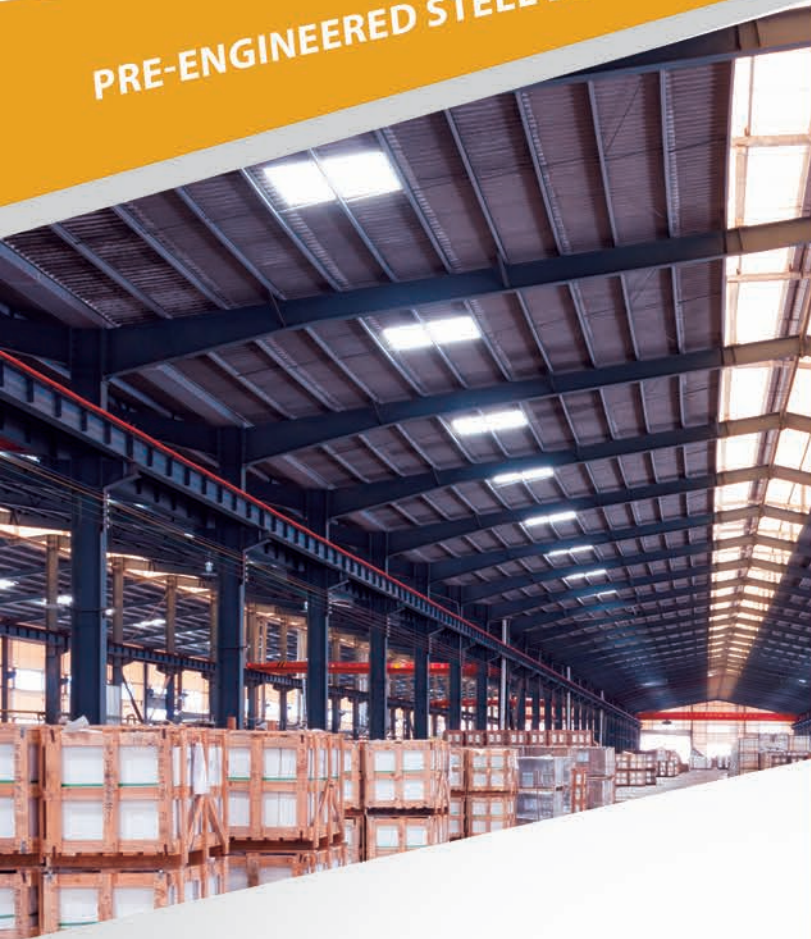
ABJ: +2250747444498



✉ info@jccgroup.co

📍 11 BP 114 ABIDJAN 11





Pre-engineered buildings

are factory - built buildings that consist of rigid frames fabricated as beams and columns and connected together by bolts and nuts. These frames can span large distances without the need for intermediate supporting columns. On top of the beams and columns comes the roof purlins that are attached to the roofing system.

This style of construction is ideal for industrial buildings, warehouses, factory buildings, workshops, car parking space, supermarkets, community halls, auditoriums, commercial complexes, hangars, showrooms, schools, offices, primary health centers ...etc.



At JCC Group - Prefabex we offer design and built services and provide off the shelf solutions in addition to custom-engineered ones.

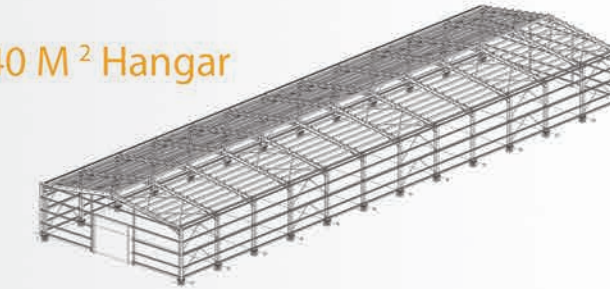
The main advantages of JCC Group - Prefabex structural steel system

- Aesthetic designs and different options of cladding
- Faster completion with average production period 4-8 weeks
- Economic in terms of materials used, foundation required and assembling

1080 M² Hangar



1440 M² Hangar



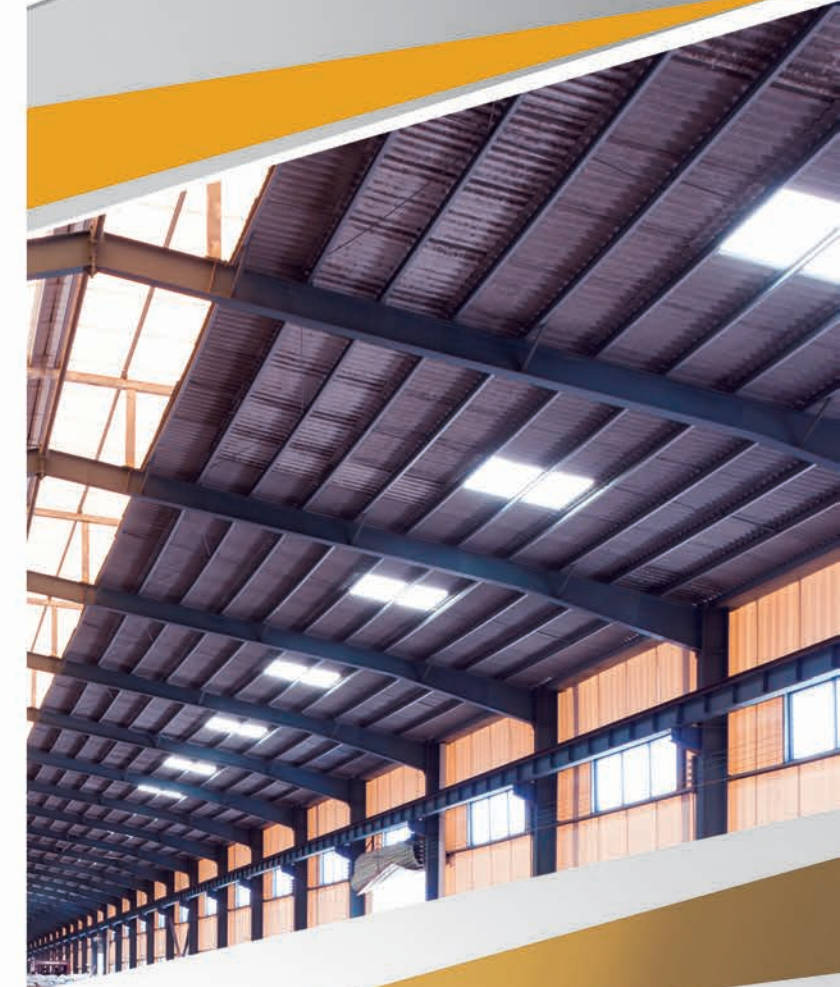
2160 M² Hangar



2400 M² Hangar



- Erection process is easy and fast
- Seismic resistance because of the low weight flexible frames
- The ability to monitor closely every stage of production eliminates the possibility of production mistakes and as a result customers get a maintenance free building





Erection of structural steel system is done by **JCC Group - Prefabex** experienced teams. The painted steel sections are lifted into place by crane, and then bolted together by making sure each bolt is tightened to exactly the right amount of torque.

The foundations of pre-engineered steel buildings are made with conventional concrete systems. Since these buildings are light weight, the foundations normally are thick concrete slabs that are designed to firmly anchor the structures to the ground.

Our buildings are manufactured in accordance with international codes, and our engineers work hard to provide simple, economical, yet fully functional solutions.

JCC Group - Prefabex offers many cladding options such as the economical painted corrugated metal sheeting on both roof and external walls. As an alternative EPS, Rockwool or polyurethane insulated sandwich panels can be applied in case insulation is required for roof and walls. Polycarbonate skylights can also be installed in the roof sheeting to create natural lighting.



Structural Components

- ⚙️ Anchor bolts and plates
- ⚙️ Hot-rolled Transverse rigid frames, lean-to-rafters and columns, interior beams and columns
- ⚙️ Purlins, girts, wind bracing, flange bracing
- ⚙️ High strength galvanized bolts



General Technical SPECIFICATIONS



Wall and roof covering: Unpainted galvanized trapezoidal steel sheet

Options:

- ⚙️ painted galvanized steel sheet
- ⚙️ Sandwich panel with Polyurethane insulation

Windows: Polyester lighting band
Options:

- ⚙️ PVC windows
- ⚙️ Aluminum windows

Mechanical, electrical concrete and civil works: Not included
Paint: Primer and oil paint for primary structural members



LEB: +9613979909

ABJ: +2250747444498



✉ info@jccgroup.co

📍 11 BP 114 ABIDJAN 11





MODULAR BUILDINGS



TAILORED BUILDING SOLUTIONS

JCC Group - Prefabex specializes in building modular buildings at a competitive prices and delivering them to any destination in the world. Our business is centered on delivering premium quality, lasting durability and aesthetic comfortable designs.

Our standard specifications are thoughtfully designed to be economic, energy-efficient, maintenance-free, aesthetic design and durable. Furthermore, we offer our customers a wide selection of internal and external finishing, in addition to possibility of customizing the plan according to their requirements. With our long years of accumulated experience we offer our clients hundreds of ready plans and projects to choose from. Whether you require a school, hospital, clinic, office, dormitory, dining hall or residential building then **JCC Group - Prefabex** can offer you the right solution that best meet your requirements.

The advantages of **JCC Group - Prefabex** modular buildings are:

- ☛ **Controlled quality** that is ensured by the pre-manufacturing of all the elements of the building within modern factory conditions.
- ☛ **Assembly** of the building is fast and can be completed within few days, which helps in avoiding negative effects resulting from bad weather conditions, site disturbance, site pollution...etc
- ☛ **Energy saving** thanks to the high insulation of the walls and roof.
- ☛ **Wide range** of architectural solutions including external and internal options for finishing.
- ☛ **Affordable** when compared with traditional methods of construction.

JCC Group - Prefabex buildings are the best solutions for building requirements in Educational, medical, commercial, industrial, military and construction sectors.

FOR EVERY INDUSTRY &
EVERY SECTOR





GENERAL CALCULATION CRITERIA

- ❶ **Snow load:** 75 kg/m²
- ❷ **Chassis load capacity:** 200 kg/m²
- ❸ **Earthquake resistance:** First-degree seismic zone
- ❹ **Load-bearing system:** Consists of special C,U and H galvanized profiles

EXTERNAL AND INTERNAL WALLS

Produced as press panel system and joined together by H profiles.

- ❶ Total Wall thickness is 10 cm
- ❷ External surface is cement board 8 mm thickness
- ❸ Internal surface is cement board 8 mm thickness
- ❹ Insulation Material: 84 mm thickness of EPS (Polystyrene foam) 16 kg/m³ density

ROOF STRUCTURE

Gable roof structure. Other roof systems are also available as an option.

- ❶ 30% incline
- ❷ Gable end trusses covered with PVC paneling
- ❸ Eaves and overhangs are 20 cm
- ❹ Around the roof PVC rain gutters and downspouts are installed
- ❺ Roof Covering: Trapezoidal painted steel sheet 0.45 mm thickness



General Technical SPECIFICATIONS

CEILING

- ❶ **Covering:** 12 mm thickness gypsum board
- ❷ **Wet areas covering:** 8 mm thickness cement board
- ❸ **Insulation:** 80 mm thickness 14 kg/m² density glass wool A1 fire rated
- ❹ **Electrostatic painted aluminum profiles are used to join gypsum boards**

Doors

- ❶ **Exterior Door:** 90x200 cm steel door (TSE certified)
- ❷ **Interior Doors:** 80x200 cm American panel door with metal frame
- ❸ **PVC, aluminum or MDF doors are also available as options**

SANITARY INSTALLATIONS

- ❶ Clean water pipes: PVC
- ❷ Waste water pipes: PPRC
- ❸ Sanitary ware and armatures: high quality first class Turkish brands

MEZZANINE FLOOR (APPLICABLE FOR TWO STOREY BUILDINGS)

- ❶ **Structure:** formed by means of seamless technology through use of special cold roll formed galvanized steel profiles
- ❷ Height of chassis is 200 mm
- ❸ Flooring of first floor is 14-16 mm thickness cement board
- ❹ Insulation: 80 mm thick of glass wool
- ❺ Live load of chassis is 200 kg/m²

Windows

- ❶ **Type:** PVC windows 60 series
- ❷ **Dimensions:** 40x60 cm for bathrooms 100x120, 120x160, 160x160 cm for rooms
- ❸ **Glass:** double glazed 4+12+4 mm, transom is single layer frosted glass

ELECTRICITY INSTALLATIONS

- ❶ **Cables:** 3x1.5 & 3x2.5 Nym
- ❷ **Sockets and Switches:** high quality first class Turkish brands
- ❸ **Lighting fixtures:** round globe
- ❹ **Main fuse box:** Siemens brand, located above the

PAINT

- ❶ External metal parts are painted with double layer coating and double layer synthetic oil paint. External cement boards panels surfaces are painted with acrylic paint. For external wall mastic is applied on the jointing areas.
- ❷ The interior cement board surfaces and ceiling gypsum boards are painted with TSE certified plastic paint.

STAIRS (APPLICABLE FOR TWO STOREY BUILDINGS)

- ❶ **Structure:** formed by means of seamless technology through use of special cold roll formed galvanized steel profiles
- ❷ **Steps:** steel sheet covered with cement board
- ❸ **Railing:** produced from decorative wrought iron



LEB: +9613979909

ABJ: +2250747444498



info@jccgroup.co

11 BP 114 ABIDJAN 11





MODULAR HOUSES

PEACE, QUALITY AND
AFFORDABILITY

JCC Group - Prefabex specializes in building modular houses at a competitive prices and delivering them to any destination in the world.

Our business is centered around delivering premium quality, lasting durability and aesthetic comfortable designs.

We offer wide range of plans and designs that cover most customers' expectations of a prefab house.

Our standard specifications are thoughtfully designed to be economic, energy-efficient, maintenance-free, aesthetic design and durable. Furthermore, we offer our customers a wide selection of internal and external finishing, in addition to possibility of customizing the plan according to their requirements.

The advantages of JCC Group - Prefabex modular houses are:



⚙️ **Controlled quality** that is ensured by the pre-manufacturing of all the elements of the house within modern factory conditions.

⚙️ **The modular homes** building process is quick as all parts such as doors, windows, electric network, plumbing network and fixtures come included in the product.

⚙️ **Assembly** of the house is fast and can be completed within few days, which helps in avoiding negative effects resulting from bad weather conditions, site disturbance, site pollution...etc

⚙️ **Energy saving** thanks to the high insulation of the walls and roof.

⚙️ **Wide range** of architectural solutions including external and internal options for finishing.

⚙️ **Affordable**

JCC Group - Prefabex **bungalows and villas** are ideal for personal accommodation, government social housing projects, tourist villages, employee accommodation projects and chalets.



PACKED IN ONE HOUSE





GENERAL CALCULATION CRITERIA

- ❶ **Snow load:** 75 kg/m²
- ❷ **Chassis load capacity:** 200 kg/m²
- ❸ **Earthquake resistance:** First-degree seismic zone
- ❹ **Load-bearing system:** Consists of special C,U and H galvanized profiles

EXTERNAL AND INTERNAL WALLS

Produced as press panel system and joined together by H profiles.

- ❶ Total Wall thickness is 10 cm
- ❷ External surface is cement board 8 mm thickness
- ❸ Internal surface is cement board 8 mm thickness
- ❹ Insulation Material: 84 mm thickness of EPS (Polystyrene foam) 16 kg/m³ density

ROOF STRUCTURE

Gable roof structure. Other roof systems are also available as an option.

- ❶ 30% incline
- ❷ Gable end trusses covered with PVC paneling
- ❸ Eaves and overhangs are 20 cm
- ❹ Around the roof PVC rain gutters and downspouts are installed
- ❺ Roof Covering: Trapezoidal painted steel sheet 0.45 mm thickness

CEILING

- ❶ **Covering:** 12 mm thickness gypsum board
- ❷ **Wet areas covering:** 8 mm thickness cement board
- ❸ **Insulation:** 80 mm thickness 14 kg/m² density glass wool A1 fire rated
- ❹ **Electrostatic painted aluminum profiles are used to join gypsum boards**

Doors

- ❶ **Exterior Door:** 90x200 cm steel door (TSE certified)
- ❷ **Interior Doors:** 80x200 cm American panel door with metal frame
- ❸ **PVC, aluminum or MDF doors are also available as options**

SANITARY INSTALLATIONS

- ❶ Clean water pipes: PVC
- ❷ Waste water pipes: PPRC
- ❸ Sanitary ware and armatures: high quality first class Turkish brands

MEZZANINE FLOOR (APPLICABLE FOR TWO STOREY HOUSES)

- ❶ **Structure:** formed by means of seamless technology through use of special cold roll formed galvanized steel profiles
- ❷ Height of chassis is 200 mm
- ❸ Flooring of first floor is 14-16 mm thickness cement board
- ❹ Insulation: 80 mm thick of glass wool
- ❺ Live load of chassis is 200 kg/m²

General Technical SPECIFICATIONS

Windows

- ❶ **Type:** PVC windows 60 series
- ❷ **Dimensions:** 40x60 cm for bathrooms 100x120, 120x160, 160x160 cm for rooms
- ❸ **Glass:** double glazed 4+12+4 mm, transom is single layer frosted glass

ELECTRICITY INSTALLATIONS

- ❶ **Cables:** 3x1.5 & 3x2.5 Nym
- ❷ **Sockets and Switches:** high quality first class Turkish brands
- ❸ **Lighting fixtures:** round globe
- ❹ **Main fuse box:** Siemens brand, located above the

PAINT

- ❶ External metal parts are painted with double layer coating and double layer synthetic oil paint. External cement boards panels surfaces are painted with acrylic paint. For external wall mastic is applied on the jointing areas.
- ❷ The interior cement board surfaces and ceiling gypsum boards are painted with TSE certified plastic paint.

STAIRS (APPLICABLE FOR TWO STOREY HOUSES)

- ❶ **Structure:** formed by means of seamless technology through use of special cold roll formed galvanized steel profiles
- ❷ **Steps:** steel sheet covered with cement board
- ❸ **Railing:** produced from decorative wrought iron



LEB: +9613979909

ABJ: +2250747444498



info@jccgroup.co

11 BP 114 ABIDJAN 11



PANEL CABINS

JCC Group - Prefabex portable panel cabins are the right solution for urgent mobile space requirements. PREFABEX panel cabins are produced by using light steel galvanized profiles and insulated sandwich panels. The panel cabin is a great solution that can be used as security cabins, sales kiosks, parking lot booths, worksite security, mobile WC and shower units.

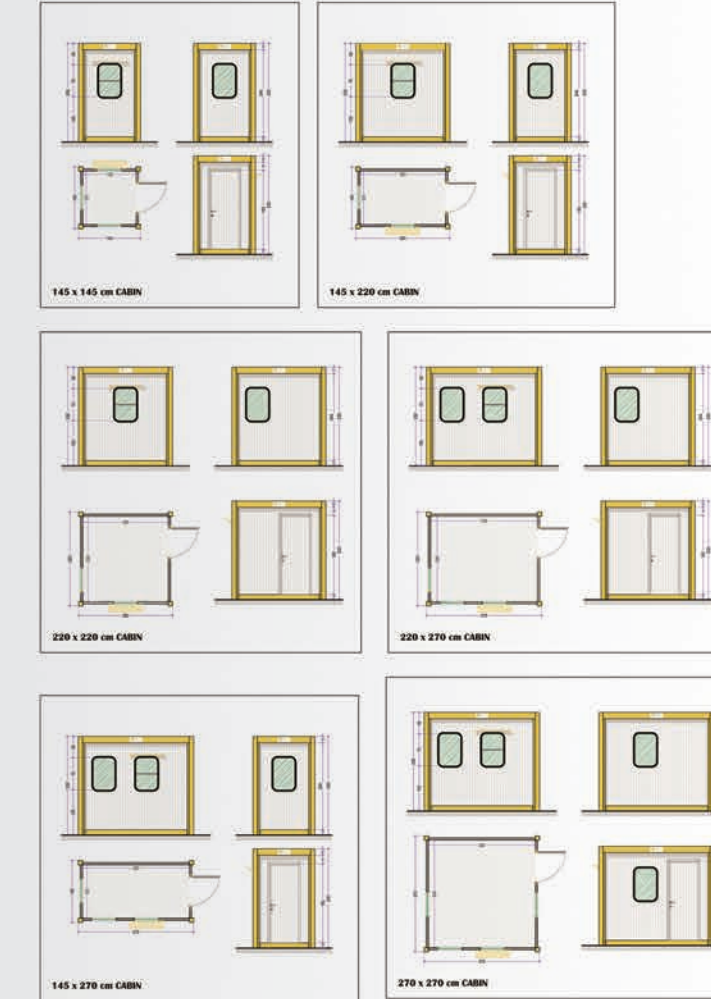
JCC Group - Prefabex panel cabins come in wide range of dimensions and designs that meet different customers' needs. Our standard range starts from 1.45 x 1.45 m and up to 2.7 x 2.7 m. You can choose also to customize the plan according to your specific requirements by adding partitions, wc/shower unit, kitchenette, wider windows ...etc. There are also many options that can be considered including shelves, counter desk with drawer, curtains, shutters and air conditioner.

Advantages of JCC Group - Prefabex panel cabins:

- 🔧 **Demountable** structures that allow maximum number to be shipped in one shipping container
- 🔧 **Easy assembly:** one cabin can be assembled within two hours by two workers
- 🔧 **Comfortable** with sound and heat insulation
- 🔧 **Economic price**
- 🔧 **Mobile structure** for easy transportation
- 🔧 **Possibility** of producing some models as mobile toilets and showers
- 🔧 **Light weight** yet strong structure



Security Cabins



W.C & Shower Cabins



MOBILE SPACE SOLUTIONS

**FAST, FLEXIBLE
& PRACTICAL**



Modular panel cabins from JCC Group - Prefabex are shipped with all parts included such as doors, windows, electric network, sanitary network and flooring.

Being fully produced within factory environment allows for strict control on quality, which reduces the possibility of defective products to zero level.



General Technical SPECIFICATIONS

Dimensions (cm):

145x145, 145x220, 145x270, 220x220, 220x270, 270x270
Height: 240 cm

Structure:
Modular construction with special formed painted galvanized steel profiles

Floor covering:

16 mm thickness cement board + 2 mm PVC vinyl

Floor Load:

200 kg/m²

Roof:

Galvanized C and U sectioned cold formed profiles

Walls:

Walls are produced as 5 cm thickness sandwich panels with external and internal surfaces from 0.5 mm thickness painted galvanized steel sheets, and insulated with EPS.

Ceiling covering:

PVC paneling

Doors:

External door is aluminum profiles and EPS insulated sandwich panel

Insulation:

45 mm thickness and 16 kg/m³ density EPS (polystyrene foam)

Windows:

PVC framed with 4 mm thickness tempered glass



LEB: +9613979909

ABJ: +2250747444498



✉ info@jccgroup.co

📍 11 BP 114 ABIDJAN 11





POLYESTER CABINS

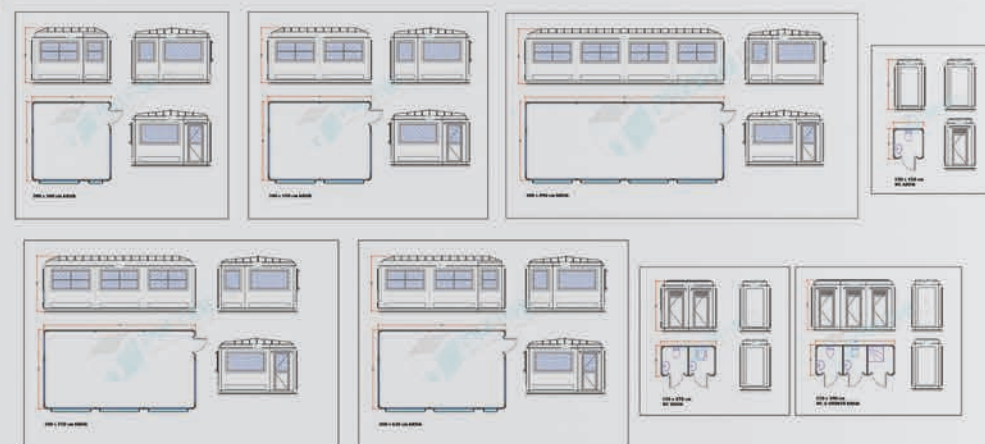
INNOVATIVE CONCEPT

JCC Group - Prefabex kiosks and cabins are the best solutions for utilizing small spaces. With a wide range of dimensions and designs available to meet different customers' needs, our cabins are affordable and low maintenance.

JCC Group - Prefabex polyester cabins present ideal solution for guard booths, WC and shower units, tickets sales kiosks, taxi stands, police control points, modular office, customer service points, bakery kiosks, buffet cabins, cafe kiosk, newspaper and magazine selling kiosks, worksite security rooms, and catering units for sports venue, festivals, events, railway stations, and town centers.

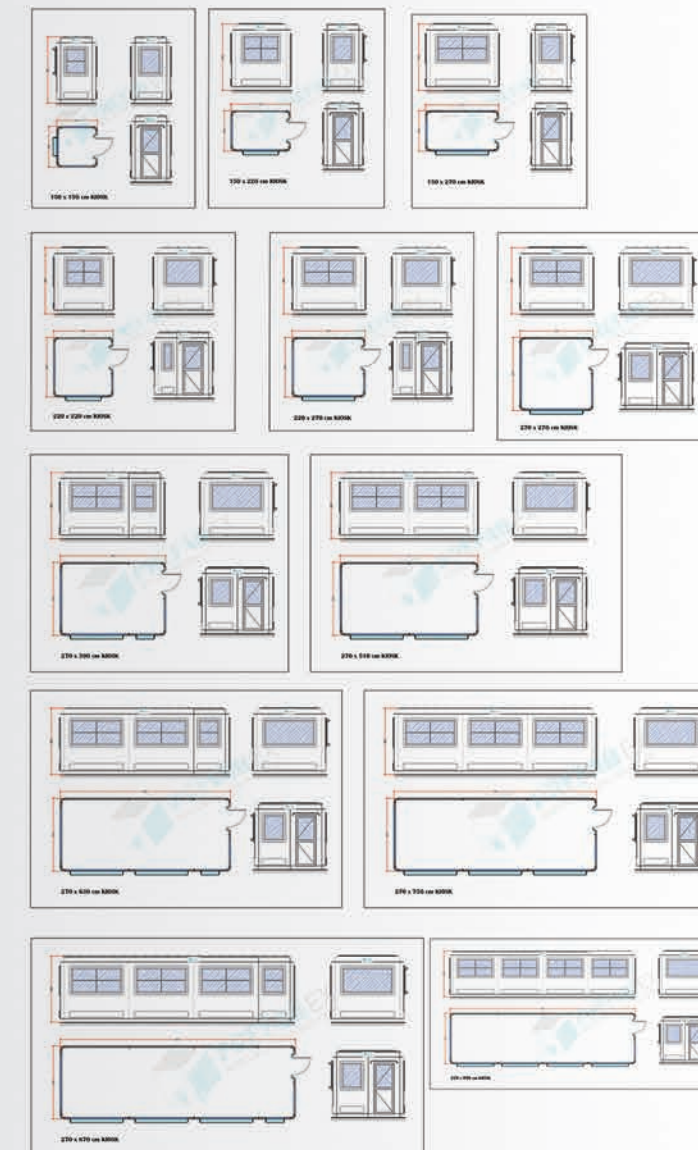
JCC Group - Prefabex polyester cabin is a product of high quality and contemporary design insight with dimensions ranging between 1.5 x 1.5 m and 6.1 x 10 m. You can choose also to customize the plan according to your specific requirements by adding partitions, wc/shower unit, kitchenette, wider windows...etc. There are also many options that can be considered including shelves, counter desk with drawer, curtains, shutters, roller shutter and air conditioner.

We offer our polyester cabins with extra chassis with forklift pockets for easy and quic relocation.



Advantages of JCC Group - Prefabex GRP cabins:

- Demountable structures that allow maximum number to be shipped in one shipping container.
- Easy assembly: one cabin can be assembled within two hours by two workers.
- Comfortable with sound and heat insulation.
- Aesthetic designs that can be used confidently in city centers.
- A solution for every need thanks to the wide range of dimensions and plans available.
- Advertising-friendly structure that can be easily wrapped with corporate designs.
- Easy to clean with its glossy surfaces
- Possibility of producing some models as mobile oillets and showers.
- Affordable, flexible and ready to use accommodation solutions.
- Secure and robust.



OF STREET KIOSKS





Modular living cabins from **JCC Group** - **Prefabex** are shipped with all parts included such as doors, windows, electric network, sanitary network and flooring.

Being fully produced within factory environment allow for strict control on quality, which reduces the possibility of defective products to zero level.



LEB: +9613979909

ABJ: +2250747444498



✉ info@jccgroup.co

📍 11 BP 114 ABIDJAN 11

Dimensions (cm):

130x130, 100x150, 150x150, 220x220, 150x220, 150x270, 220x270, 270x270, 270x390, 270x510, 270x630, 270x750, 270x870, 270x990, 390x390, 390x510, 390x750, 390x1000, 510x610, 610x750, 610x1000.

Height: 240 cm



General Technical SPECIFICATIONS

Roof and wall panels:

Roof and wall are produced as double-walled panels with external and internal surfaces from glass fiber reinforced polyester, and mounted by using antibacterial neutral silicon, and insulated with hard polyurethane foam.

Insulation:

40 mm thickness and 40 kg/m³ density Polyurethane foam is injected inside the panels.

Floor covering:

16 mm thickness cement board + 2 mm PVC vinyl

Floor Load: 200 kg/m²

Doors: External door is aluminum door painted with white color electrostatic powder.

Windows:

Aluminum frames painted with white color electrostatic powder.

4 mm thickness tempered glass.

Electric and sanitary installations:

Top quality TSE certified Turkish brands.