

Al Ezz
1-



العز العقارية
Al Ezz Real Estate

Project Al Ezz Company Profile - (101)

Al-Fayhaa Dist - Darb Al Haramain





The landscape between the buildings adds a touch of beauty and comfort, featuring carefully designed green spaces, an elegant walkway, and soft lighting that brings the space to life—harmoniously blending residential living with nature.

A green space that separates and unites





Project Features

Landscape
area of 16 meters

3
Elevators

On two commercial
streets
20+54

Smart
Home

luxury
finishes

Smart
entrance

Independent
water tanks

multiple
warranties

Central
gas

surveillance
cameras

Independent
electricity meter

Private
parking

air-conditioned
entrances

Gym

Services surrounding the location

Restaurants

Malls

Hypermarket

Hospitals

Public
Parks

Universities
& Schools





العز العقارية
AI Ezz Real Estate

AI Ezz Project (101)

The (AI-Ezz 101) project is located in one of the most prominent modern urban master plans. It enjoys a prime strategic location near the Haramain Expressway and the Haramain High-Speed Railway Station, providing residents with easy access to both the northern and southern areas of Jeddah. It is also conveniently close to the city's most important vital landmarks.

Project Location

A strategic location on King Abdullah Road in Al-Fayhaa District (Darb Al-Haramain Masterplan), within the urban development zone of Jeddah. It connects you to the main roads and provides easy access to all directions.

Nearby landmarks



Al Andalus Mall

4 minutes



Al Salam Mall

2 minutes



Dr. Sulaiman Al-Habib Hospital

4 minutes



East Jeddah Hospital

5 minutes



Jeddah Airport

20 minutes



Al-Hamra Corniche

15 minutes



King Abdulaziz University

4 minutes



Haramain Train Station

4 minutes

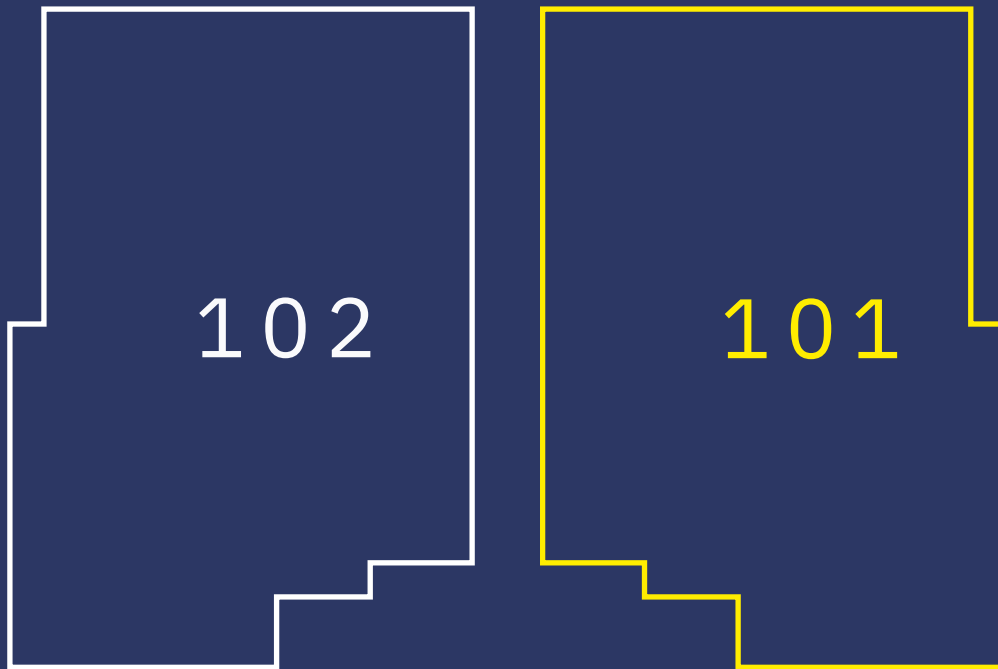


Al Fayhaa Park

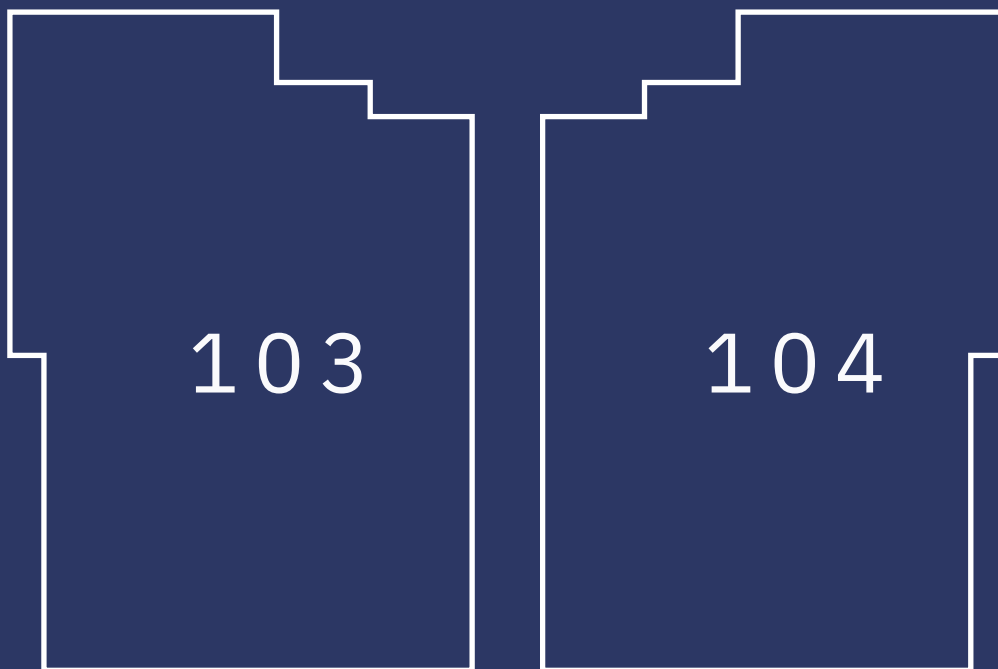
4 minutes



54-meter street



Landscape



20-meter street



MISHRIFAH
مشرفة

294

55

BANI MALIK
بني مالك

Haramain Road

prince Majid street

Prince Majid Rd

AN NASEEM
النسيم

Train Station

Sulaiman Al-Habib Hospital

Al Salam Mall

Project Location

21°30'16.7"N
39°13'36.9"E

East Jeddah Hospital

45

51



King Abdulaziz University

AL U
الفيحاء

جامعة الملك عبدالعزيز

Al Jamea Plaza
الجامعة بلازا



AL JAMI'AH



Features designed to enhance & elevate your living experience.

Price

SAR

Area

M²



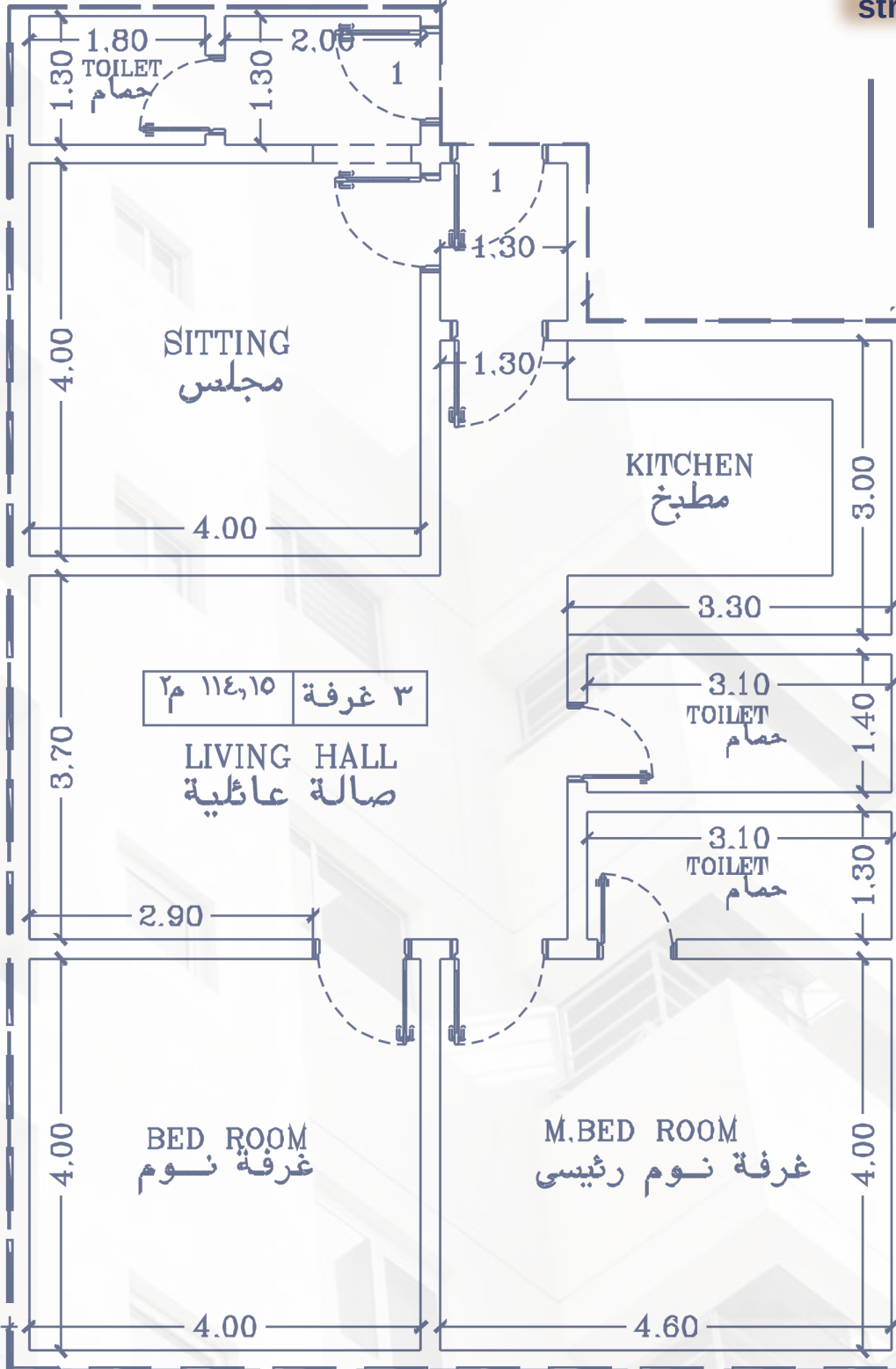
العز العقارية
Al Ezz Real Estate

399,000

115 square meters

Apartment A

front-facing on the 54-meter street.



Three-bedroom apartment

Northeast-facing



3-bedroom



Sitting



3 Toilets



Kitchen



2 Entrances



central Gas



Smart Entry

Price

SAR

Area

M²

399,000

115 square meters

Apartment B1

Front-facing on the 54-meter street

Three-bedroom apartment

Northwest-facing

3-bedroom

-Sitting

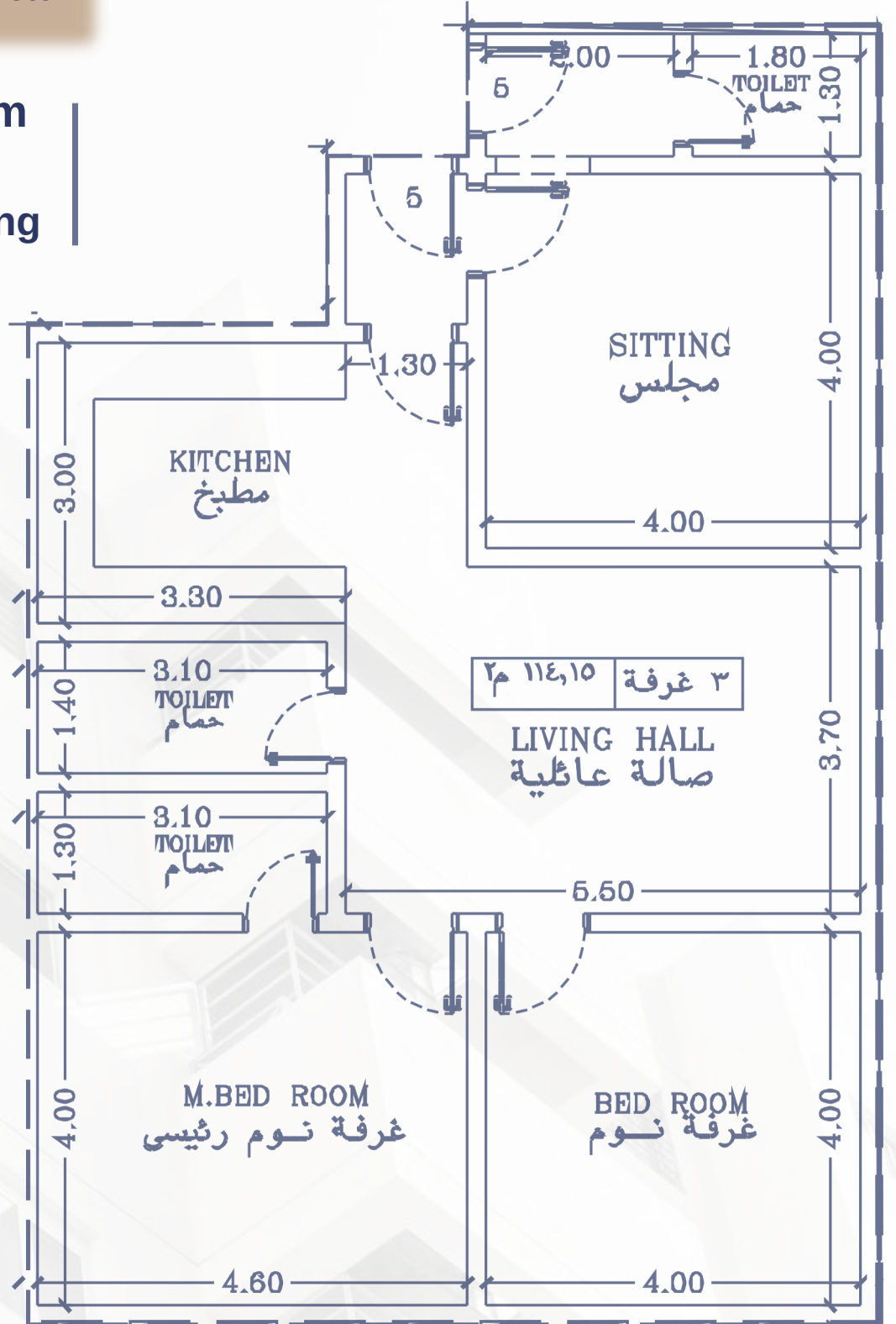
3 Toilets

Kitchen

2 Entrances

central Gas

Smart Entry





العز العقارية
AI Ezz Real Estate

Price

SAR

~~200,000~~

185,000

Area

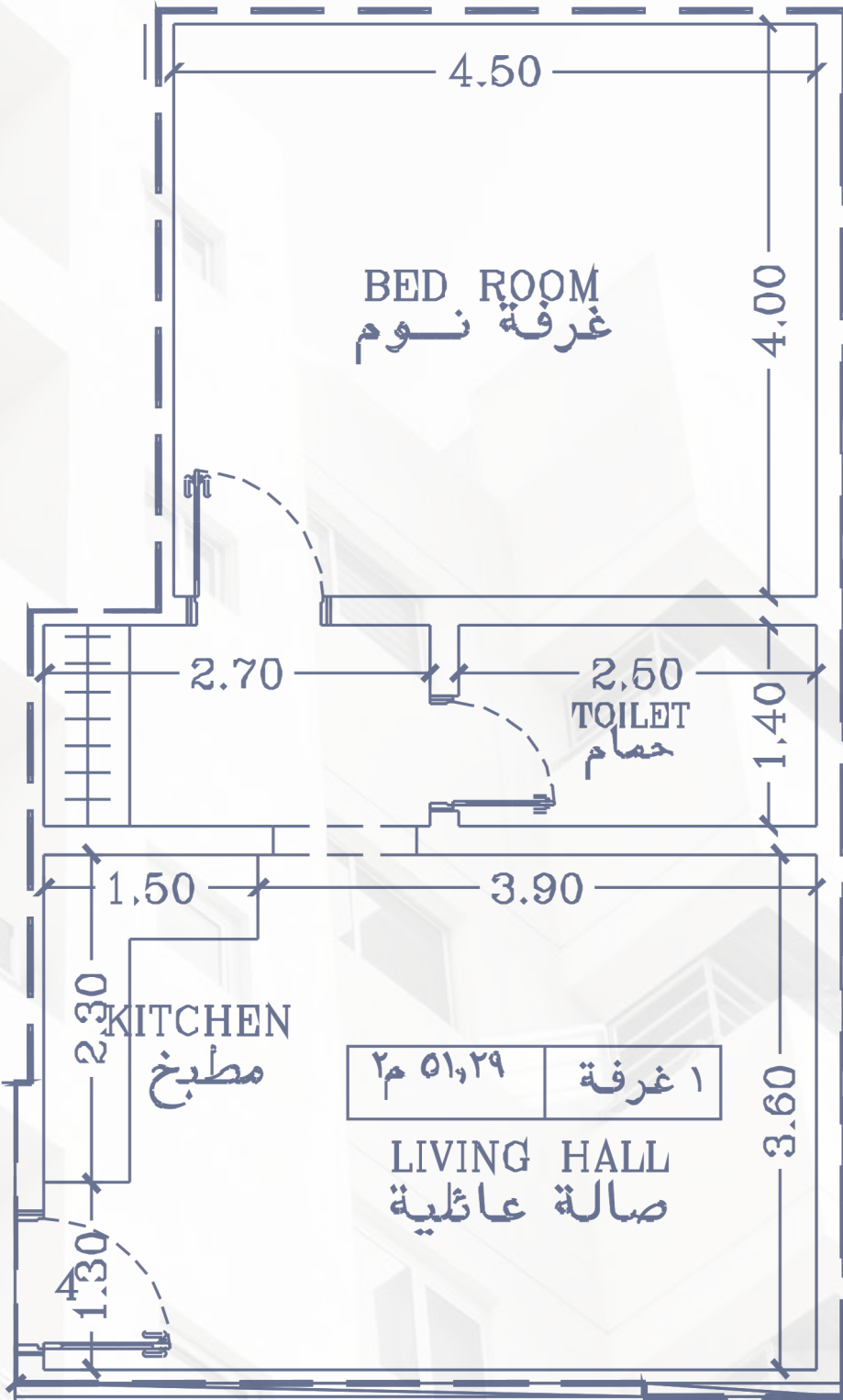
M²

52 square meters

Studio C1

On the corridor

One-bedroom
One-living room



1-bedroom



1-Sitting



1 Toilets



Kitchen



Entrance



central Gas



Smart Entry

Price

SAR

~~210,000~~

195,000

Area

M²

55 square meters

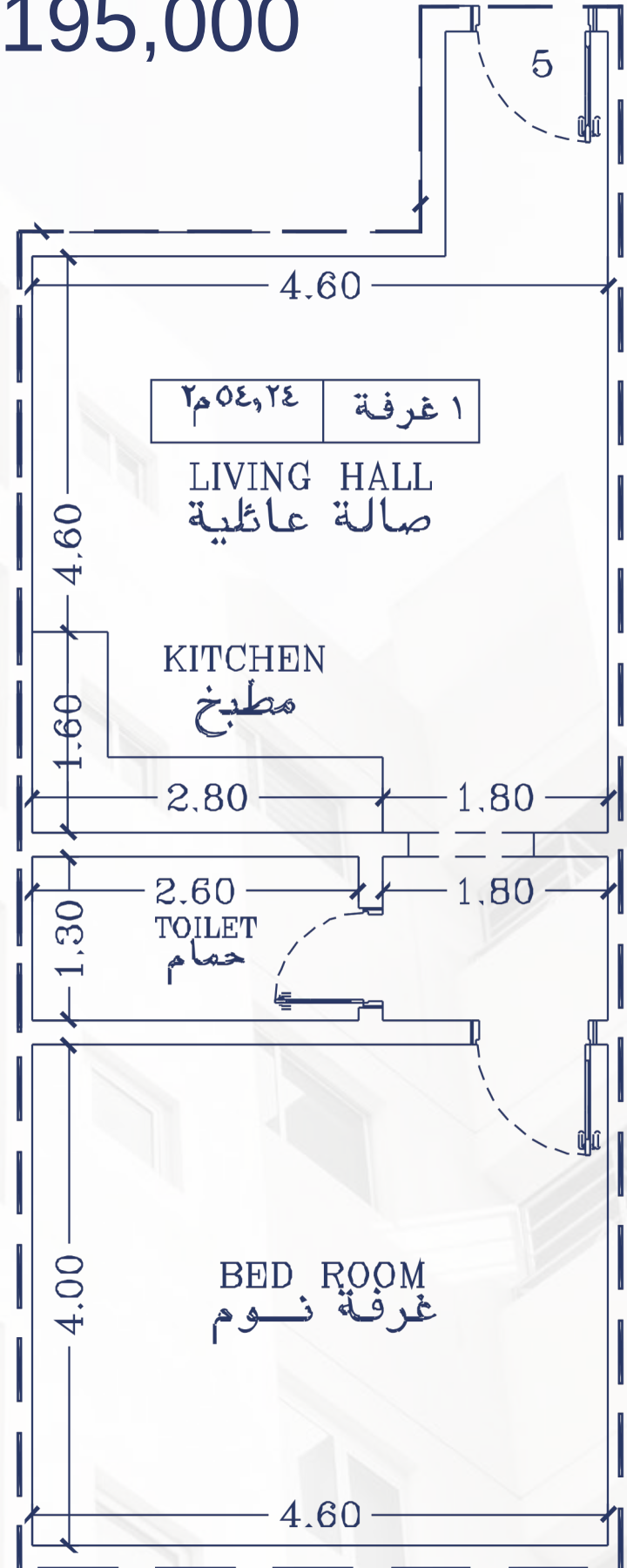


العز العقارية
AI Ezz Real Estate

Studio C2

Front-facing on the 20-meter street

One-bedroom
One-living room



1-bedroom

1-Sitting

Entrance

1 Toilets

Kitchen

central Gas

Smart Entry



العز العقارية
AI Ezz Real Estate

Price

SAR

289,000

Area

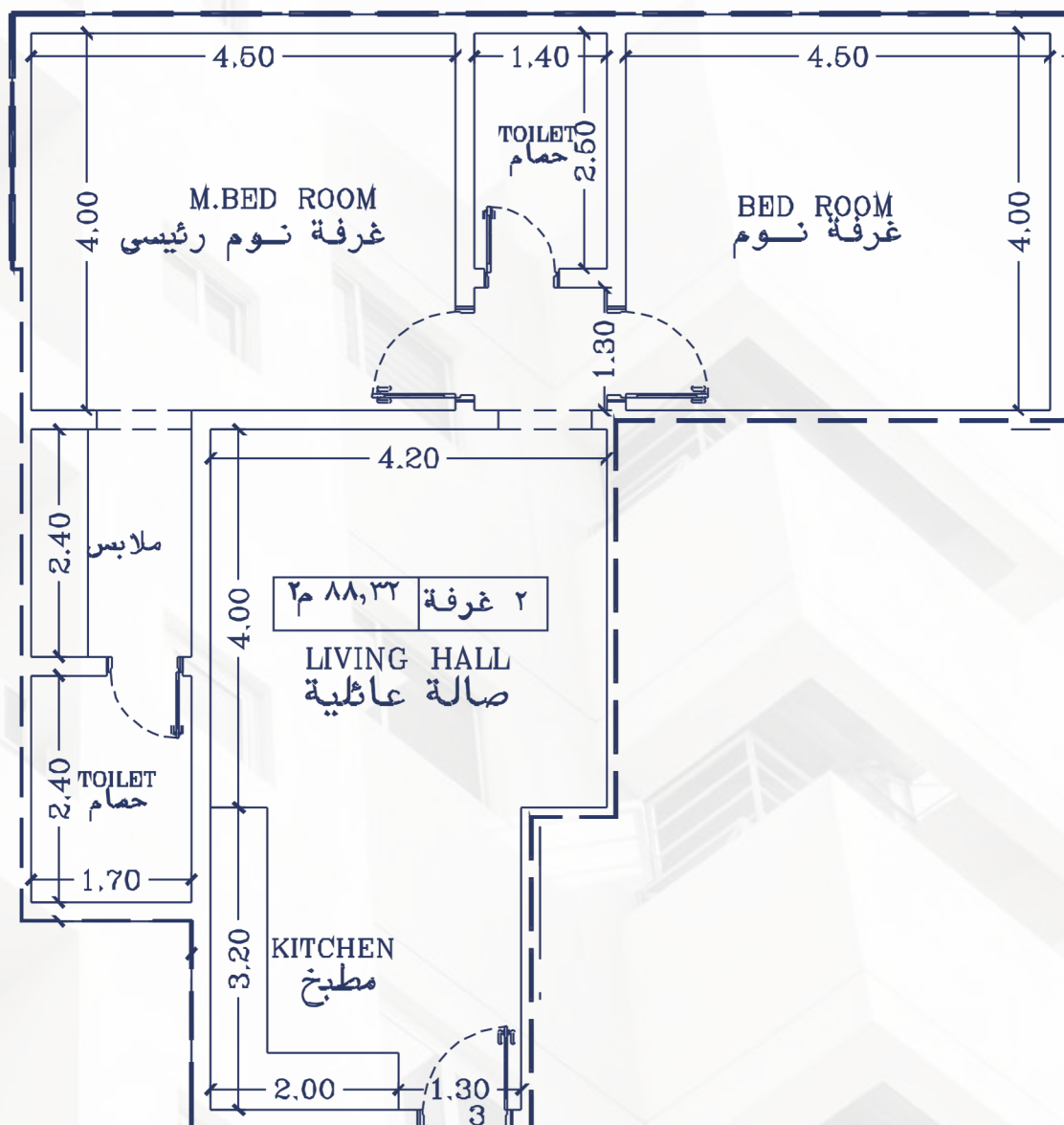
M²

89 square meters

Apartment D1

With a view to the landscaped area

Two-bedroom apartment



2-bedroom



Sitting



Entrance



2-toilets



Kitchen



Central Gas



Smart Entry

Price
SAR

~~299,000~~
288,000

Area
M²

86 square
meters

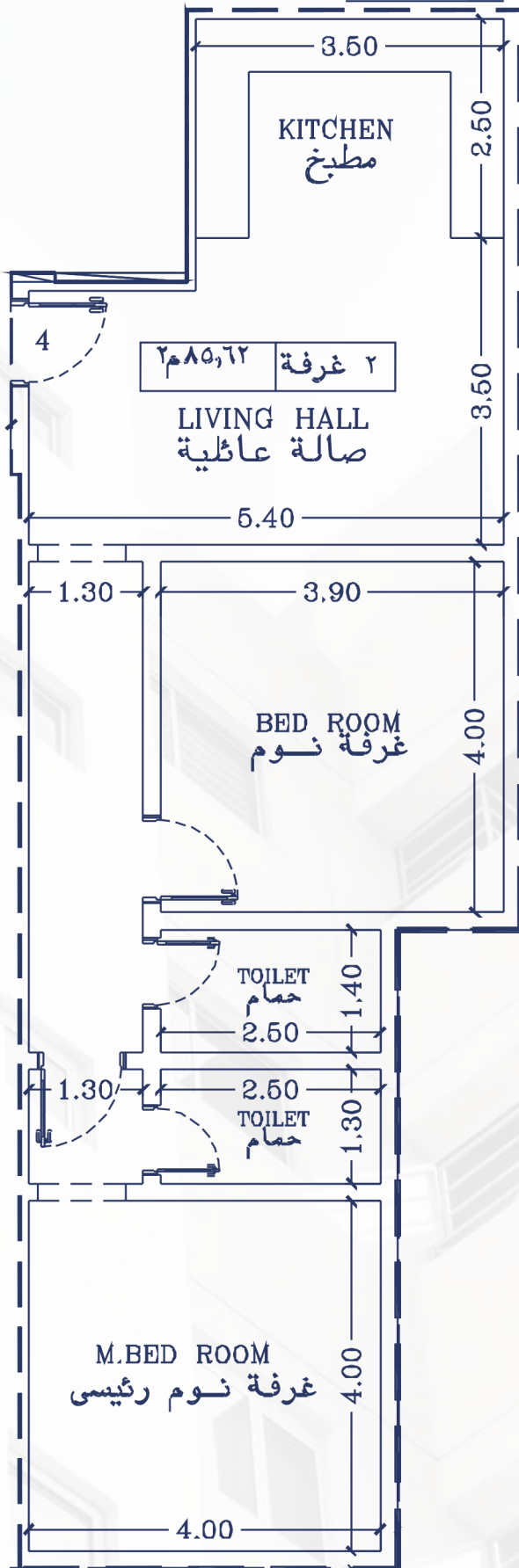


العز العقارية
Al Ezz Real Estate

Apartment D2

Front-facing on the 20-meter
street

Front-facing
two-bedroom
apartment



2-bedroom



Sitting



Entrance



2-toilets



Kitchen



Central gas



Smart Entry



العز العقارية
AI Ezz Real Estate

Price

SAR

270,000

Area

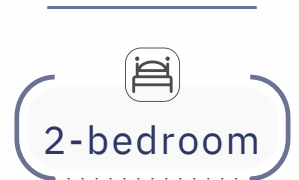
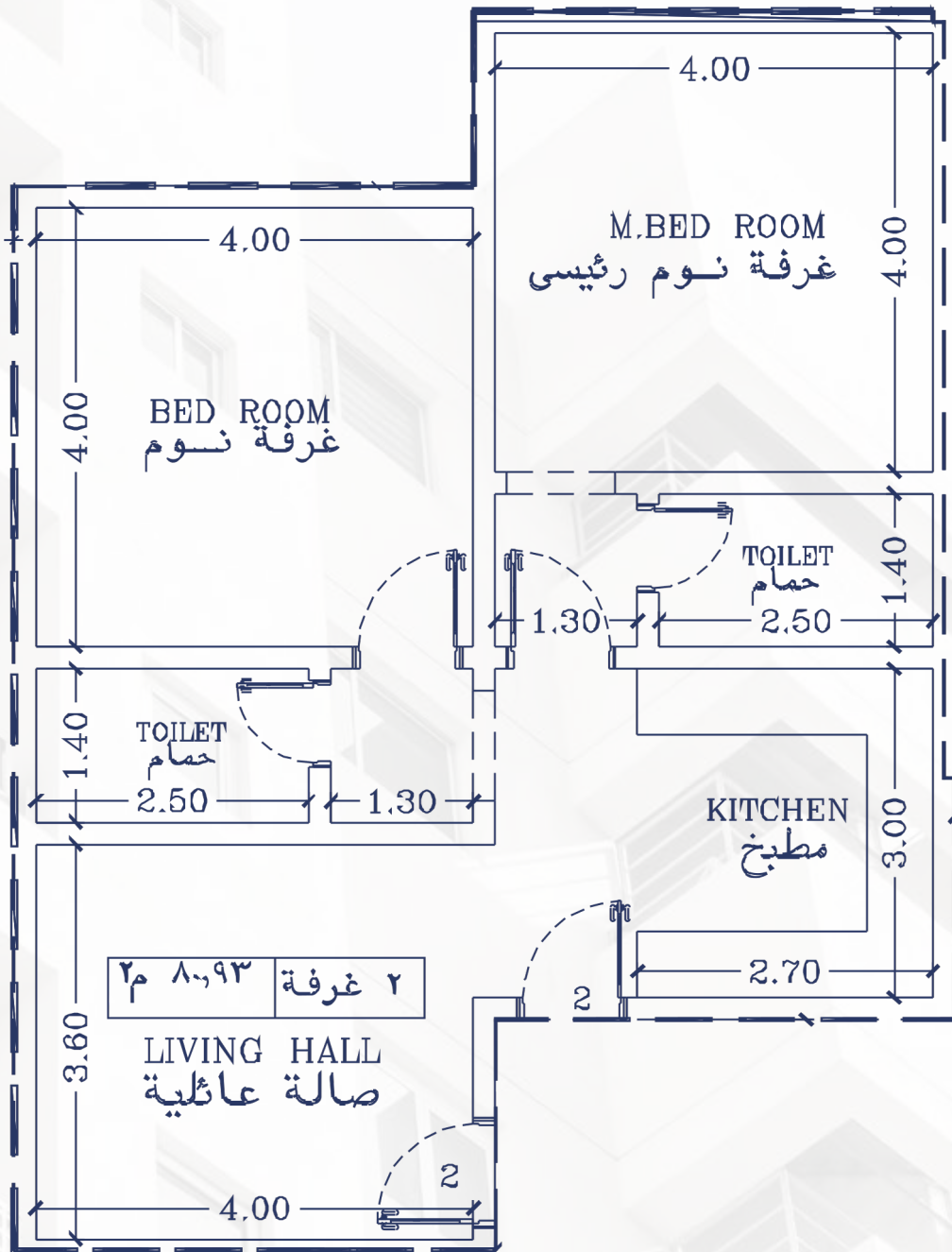
M²

81 square meters

Apartment E

With a view to the landscaped area

Two-bedroom apartment



2-bedroom



Sitting



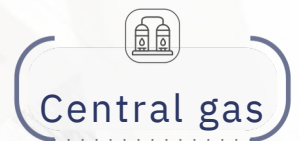
2 entrances



2-toilets



Kitchen



Central gas



Smart Entry

Price
SAR

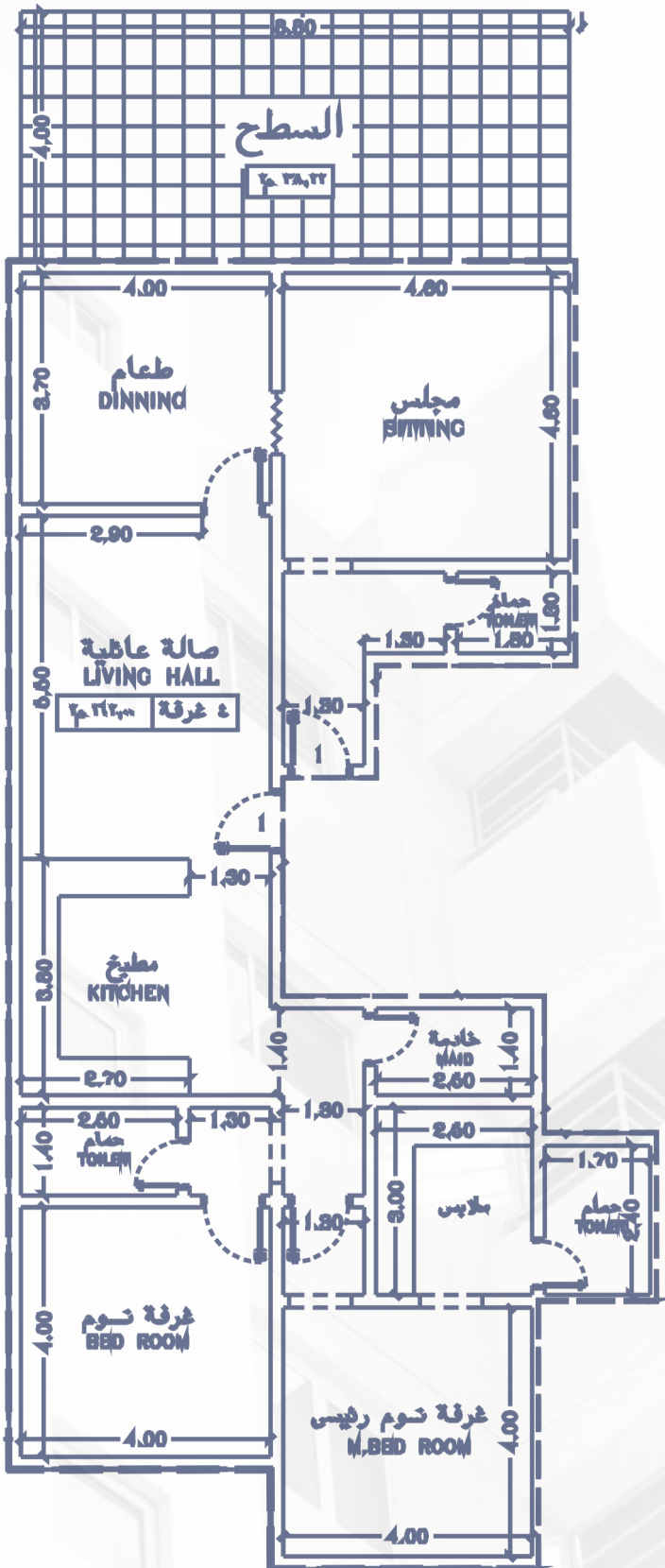
Area
M²

750,000

Built-up area: 162 sqm
Roof: 33 sqm
Total: 201 sqm

Annex Unit A

On the 52-meter commercial street



Four-bedroom annex

- Sitting
- 4-bedroom
- 3-toilets
- Kitchen
- 2-entrances
- Central gas
- Maid's room
- dressing-room
- Private rooftop
- Dining hall
- Smart Entry

Price
SAR

900,000

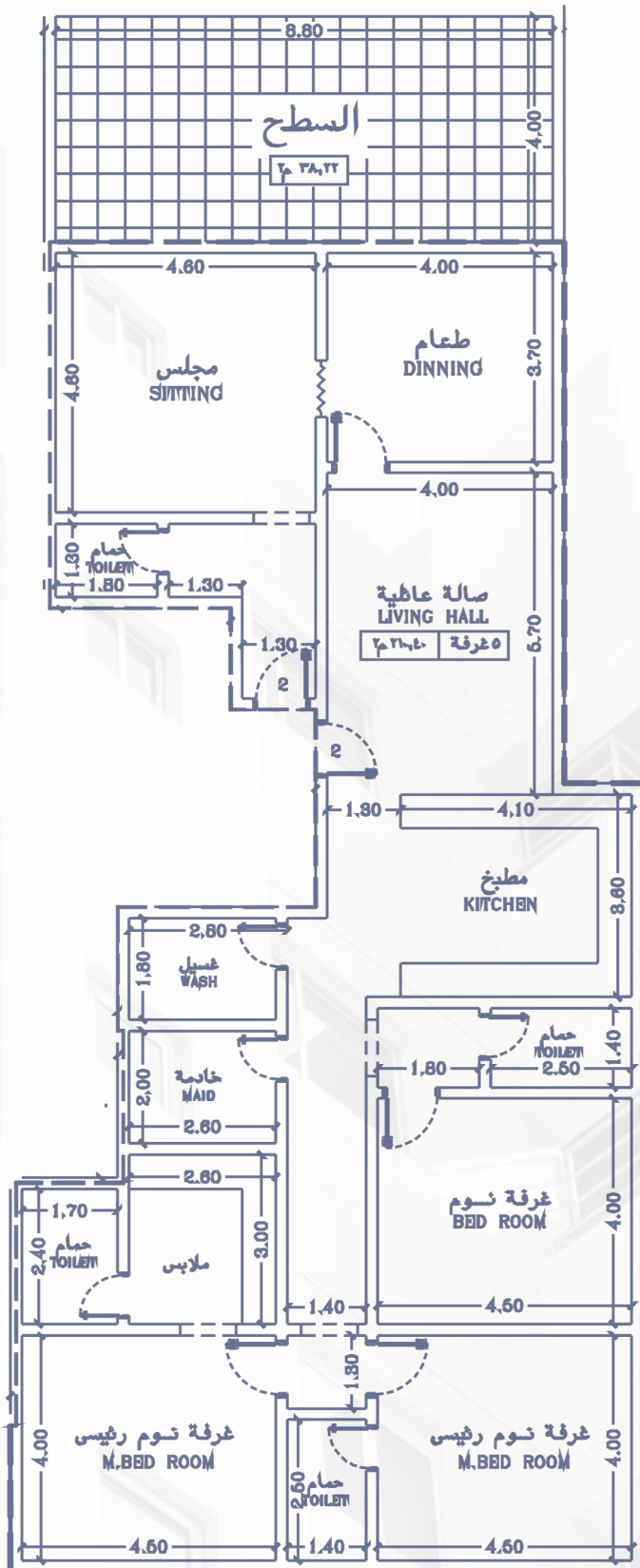
Area
M²

Built-up area: 211 sqm
Roof: 39 sqm
Total: 250 sqm

Annex Unit B

On the 52-meter commercial street

Five-bedroom annex



Sitting

5-bedroom

4-toilets

Kitchen

2-entrances

Central gas

Maid's room

dressing-room

Private rooftop

Dining hall

Smart Entry



العز العقارية
Al Ezz Real Estate



Commercial Showroom Specifications



العز العقارية
Al Ezz Real Estate

Warranty Terms

10
Years

Tawuniya
Insurance

1
Year

Free
'Owners
Association
Membership

5
Years

Plumbing
&
electrical

25
Years

switches
&
sockets



Project Location



Click Here



العز العقارية
Al Ezz Real Estate

