



SURVEY: MACLEAY ISLAND FERRY TERMINAL PARKING - 10/10/25 to 24/10/25

		DISABLED PARKING FREE BAYS	BOAT TRAILER PARKING						
DATE	TIME		WIND: Knots Mean wind @ 9am (gust wind =30%more)	7-DAY (10 double bays)			SAT/SUN (16 double bays)		
				# TRAILERS	# ILLEGAL	FREE BAYS	# TRAILERS	# ILLEGAL	FREE BAYS
10/10 FRI	10:15	0 100%	11kN	1 10%	3	7			
11/10 SAT	10kN NOT COUNTED: too windy								
12/10 SUN	10:30	0 100%	4kN	0 0%	0	10	0	13	7
13/10 MON	10:15	0 100%	8kN	5 50%	5	2			
14/10 TUE	10:30	0 100%	9kN	2 20%	7	0			
15/10 WED	10:15	0 100%	4kN	6 60%	3	2			
16/10 THU	10:15	0 100%	3.5kN	5 50%	5 2 x box trailer	3			
17/10 FRI	10:15	0 100%	3kN	0 0%	5 2 x box trailer	0	Same box trailers Thur & Fri		
18/10 SAT	10:00	0 100%	8kN	2 15%	1	7	2	18	3
19/10 SUN	10:15	1 92%	4kN	2 8%	3 1 truck 1 m/bike	5	0	20	5
20/10 MON	10:15	0 100%	3.5kN	4 40%	2 1 box trailer	4			
21/10 TUE	10:15	1 92%	7kN	3 30%	2	6			
22/10 WED	10:15	0 100%	6kN	2 20%	5	5			
23/10 THU	10:15	2 83%	9kN	2 20%	5	2			
Asset % utilised (97% avg)				Asset % utilised 32% Mon/Fri & 5% Sat/Sun					
REFER NEXT PAGE FOR WIND TABLE									

THERE IS NO PROVISION FOR LARGE VEHICLES

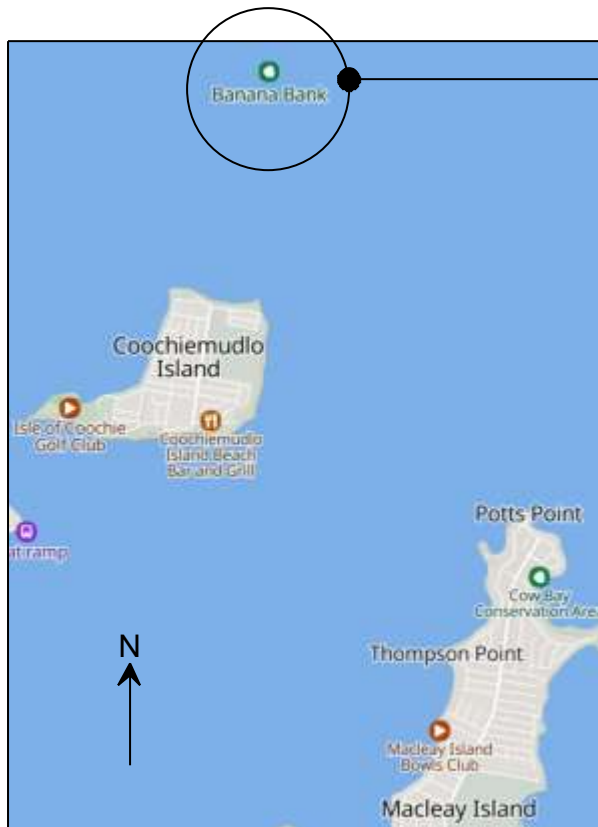


20min DISABLED PARKING ILLEGAL PARKED - FOR 2 DAYS

Disability Permit displayed



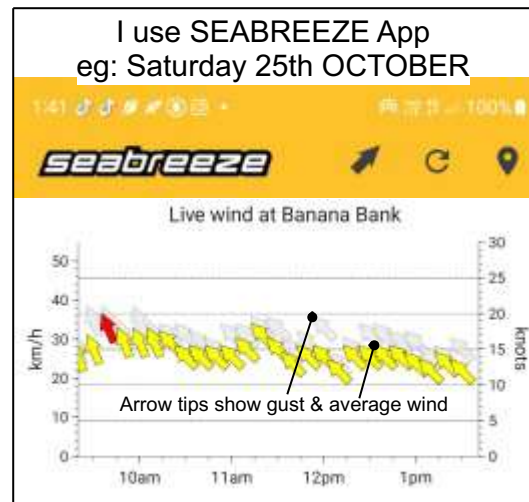
DESPERATION RESULTS IN DESPERATE MEASURES



Why Banana Bank?

This is the closest open water wind recording station to Macleay Island. I personally wouldn't take my 4m boat out if I see winds of 15kN or more.

I use SEABREEZE App
eg: Saturday 25th OCTOBER



Wind Data: Banana Bank - 10/10 ~ 24/10

Banana Bank [Wind Only], Queensland October 2025 Daily Weather Observations

Only wind observations are available from this automatic weather station.

Date	Day	Temps		Rain	Evap	Sun	Max wind gust		Dir	Spd	Time	Temp	RH	Cld	Dir	Spd	MSLP	Dir	Spd	MSLP
		°C	°C	mm	mm	hours	km/h	local				°C	%	g/h						
10	Fr						N	50	22	07		NNW	30	16kN	11kN			N	30	
11	Sa						N	50	21	27		NNW	28	15kN	10kN			N	28	
12	Su						N	46	21	25		N	11	6kN	4kN			N	15	
13	Mo						NW	52	01	29		N	20	11kN	8kN			NNE	13	
14	Tu						SE	35	00	55		E	22	12kN	9kN			NE	17	
15	We						NNE	33	12	25		NE	11	6kN	4kN			ENE	19	
16	Th						ENE	26	07	58		E	9	5kN	3.5kN			ENE	15	
17	Fr						NNE	39	16	01		NW	7	4kN	3kN			NNE	26	
18	Sa						NNE	41	16	00		NNW	20	11kN	8kN			NNE	30	
19	Su						ESE	39	15	10		S	11	6kN	4kN			SE	30	
20	Mo						N	31	22	20		NNW	9	5kN	3.5kN			NNE	19	
21	Tu						NNE	33	18	21		NNW	10	10kN	7kN			NNE	24	
22	We						N	44	22	56		NNW	17	9kN	6kN			NNE	30	
23	Th						SE	56	15	57		NNW	22	12kN	9kN			SE	37	
24	Fr						N	35	16	39		S	6					NNE	26	
25	Sa											SSE	28							

Max wind gust
(mean wind is
30% less)

Conversion
km/hr to kN
= 0.54/1

Ideal boating days

Average
wind

Statistics for the first 25 days of October 2025