



# Single-Family House Projects

[vitayhomes.com](https://vitayhomes.com)



## Choose a design

We have projects in every style and size - you will surely find the perfect one. You can always count on our support. We will help you match the project to your property.



## Adapt the technology to your needs

Tell us about your expectations. We will help you select the appropriate construction technology to ensure that the chosen project best meets your needs and fulfills all requirements.



## Receive your home

We will take care of everything: prepare the documentation, order the materials and build your dream house. You, meanwhile, can choose furniture and other interior furnishings.

## OUR ADVANTAGES

Super quality  
Precision-engineered  
Flexibility  
Affordability

Energy efficiency  
Latest Technologies  
Custom Design  
Quick and easy Installation





— Choose your home and **contact us:**

**Theodore Topouzis**



**401 865 - 9303**

[ttopouzis@taclosinglaw.com](mailto:ttopouzis@taclosinglaw.com)

**Tom Sadowski**



**401 314 - 5550**

[tom@vitayhomes.com](mailto:tom@vitayhomes.com)

**Chris Topouzis**



**401 626 - 6865**

[ctopouzis@taclosinglaw.com](mailto:ctopouzis@taclosinglaw.com)





# Wega House

Year-round house with  
a timber-frame construction



## Project description

**LIVING AREA:** 679 sq ft

Number of rooms  
(excluding the living room): 2

Bathrooms + toilets: 1

Garage spaces: 0

Roof slope angle: 45°



**Contact us today** for more information

Vitay Homes





## WEGA

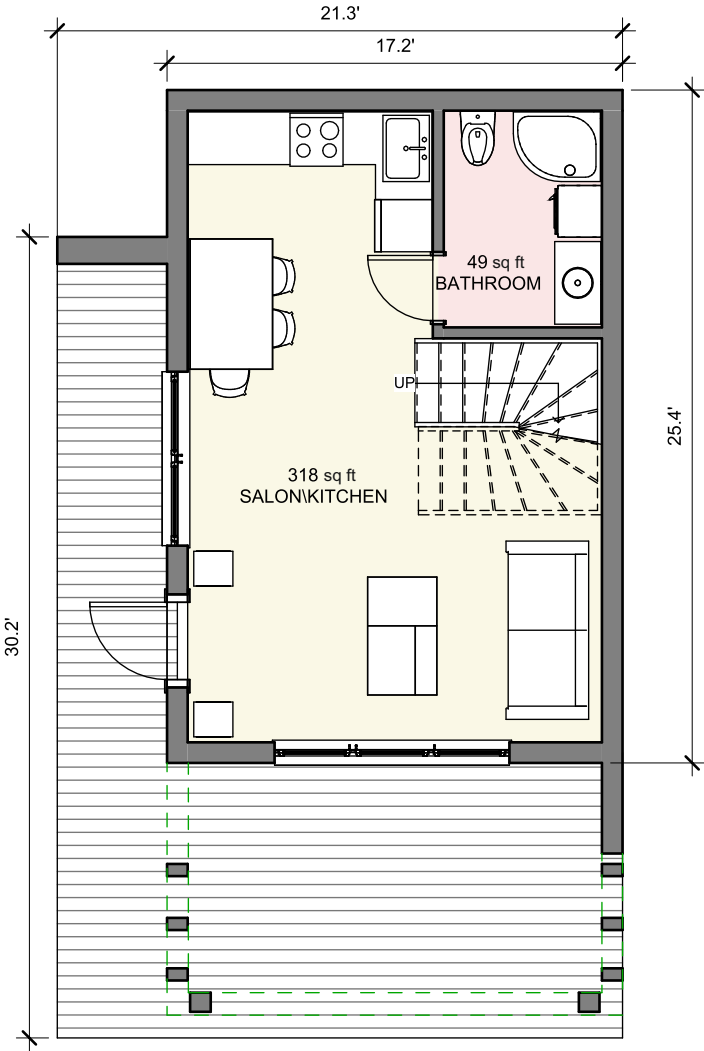


**Modern year-round house with a timber-frame construction.** It is simple, affordable and quick to build, with a size of up to 380 sq ft. The design features a simple barn-like shape with a gable roof, enhanced by a modern-style roof over the main entrance and a wooden pergola on the terrace. The exterior facade combines striking graphite metal cladding with natural wooden accents. On the ground floor, there is an open living area with a separate bathroom and shower, while the attic houses two bedrooms. This house is perfect for a weekend retreat or as a year-round home for 1-2 persons.



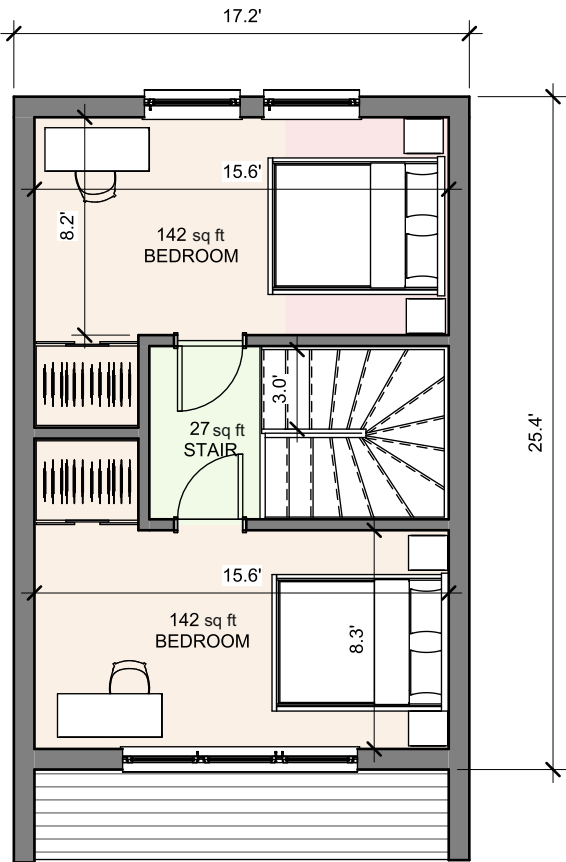
FIRST FLOOR

1. SALON+KITCHEN	318 sq ft
2. BATHROOM	49 sq ft
<hr/>	
TOTAL	367 sq ft



SECOND FLOOR

1. BEDROOM	142 sq ft
2. BEDROOM	142 sq ft
3. STAIR	27 sq ft
<hr/>	
TOTAL	312 sq ft





# Rigel House

Year-round galvanized  
steel construction



## Project description

**LIVING AREA:** 886 sq ft

Number of rooms  
(excluding the living room): 2

Bathrooms + toilets: 2

Garage spaces: 0

Roof slope angle: 45°



**Contact us** today for more information

Vitay Homes





RIGEL



## Comfort in a small space

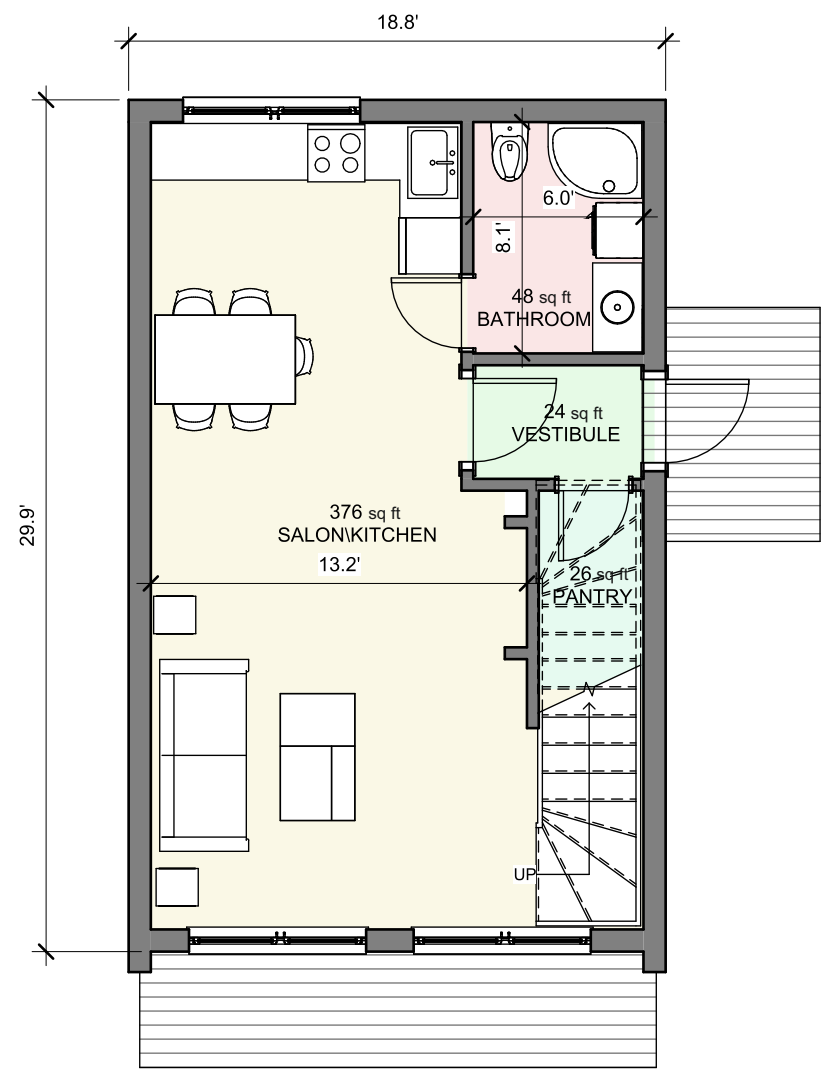


**The design features a simple barn-like shape with a gable roof and straight terrace.** On the ground floor, there is an open living area with a kitchenette and a separate restroom with a shower. The attic floor accommodates two bedrooms with an additional restroom. This house is perfect for weekend getaways or as a year-round home for a couple or small family.



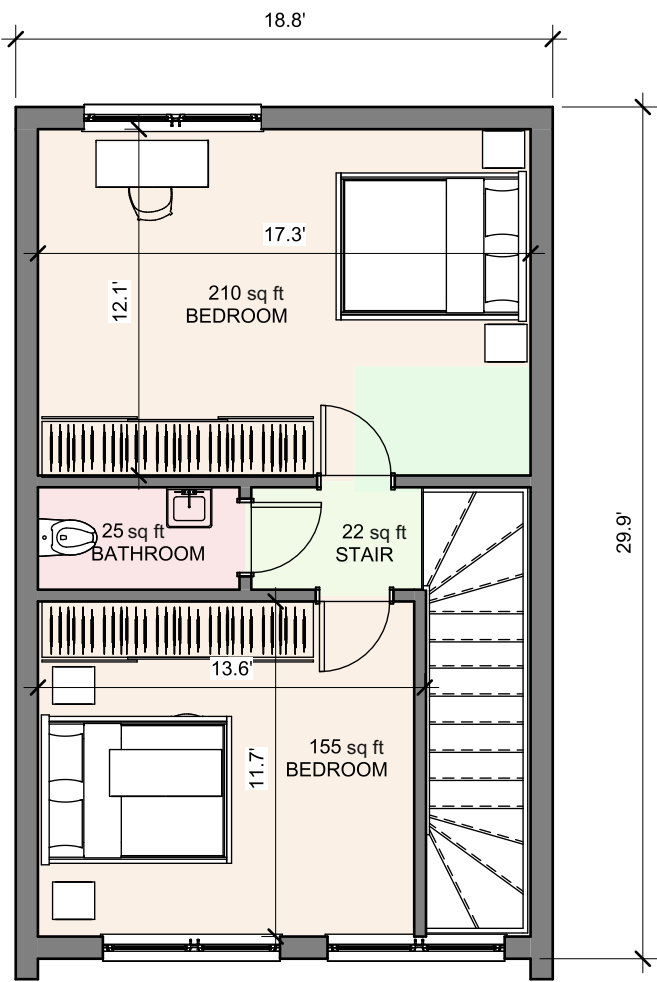
# FIRST FLOOR

1. Vestibule	24 sq ft
2. Salon+kitchen	376 sq ft
3. Bathroom	48 sq ft
4. Pantry	26 sq ft
<hr/>	
TOTAL	474 sq ft



# SECOND FLOOR

1. Corridor	22 sq ft
2. Bedroom	210 sq ft
3. Bedroom	155 sq ft
4. Bathroom	25 sq ft
<hr/>	
TOTAL	412 sq ft





# Hadar House

Year-round  
wooden-frame house





## Project description

**LIVING AREA:** 890 sq ft

Number of rooms  
(excluding the living room): 2

Bathrooms + toilets: 2

Garage spaces: 0

Roof slope angle: 40°



**Contact us** today for more information

Vitay Homes





**Quality is of  
the utmost importance**

**HADAR**

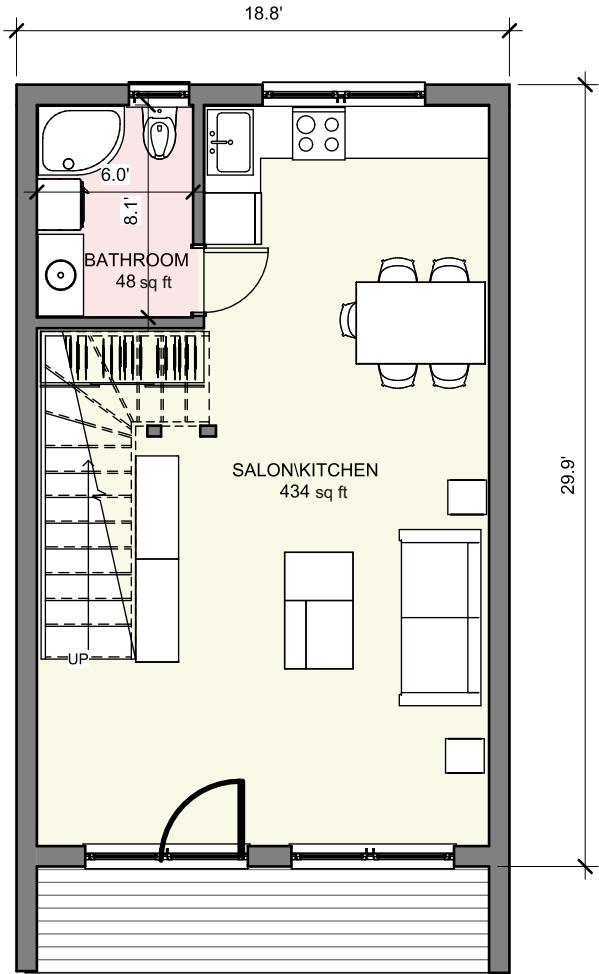


**The building has a compact shape and consists of a single floor with an attic.** The residential area is covered by a symmetrical gable roof that extends over the terrace area. This design provides excellent protection against wind and adds visual interest to the building's silhouette. The construction is well-suited for use as a weekend getaway or as a year-round home for a couple or small family.



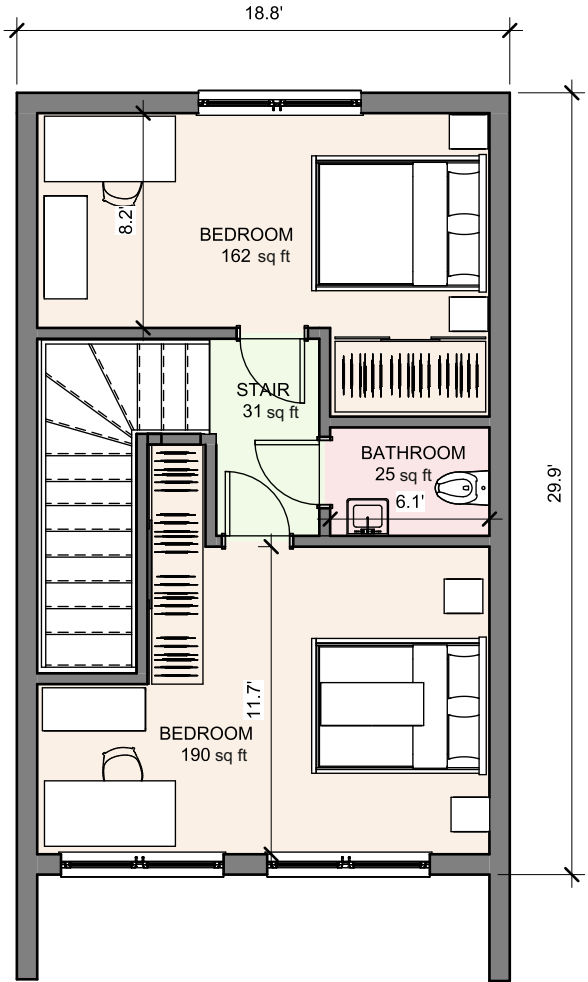
FIRST FLOOR

1. Salon+ kitchen	434 sq ft
2. Bathroom	48 sq ft
<hr/>	
TOTAL	482 sq ft



SECOND FLOOR

1. Corridor	31 sq ft
2. Bedroom	162 sq ft
3. Bathroom	25 sq ft
4. Bedroom	190 sq ft
<hr/>	
TOTAL	408 sq ft





# Procjon House

Year-round house  
40' shipping container





## Project description

**LIVING AREA:** **804 sq ft**

Number of rooms  
(excluding the living room):

1

Garage spaces:

0

Bathrooms + toilets:

1

Roof slope angle:

42°

**Contact us today**  
for more information

Vitay Homes







## PROCJON

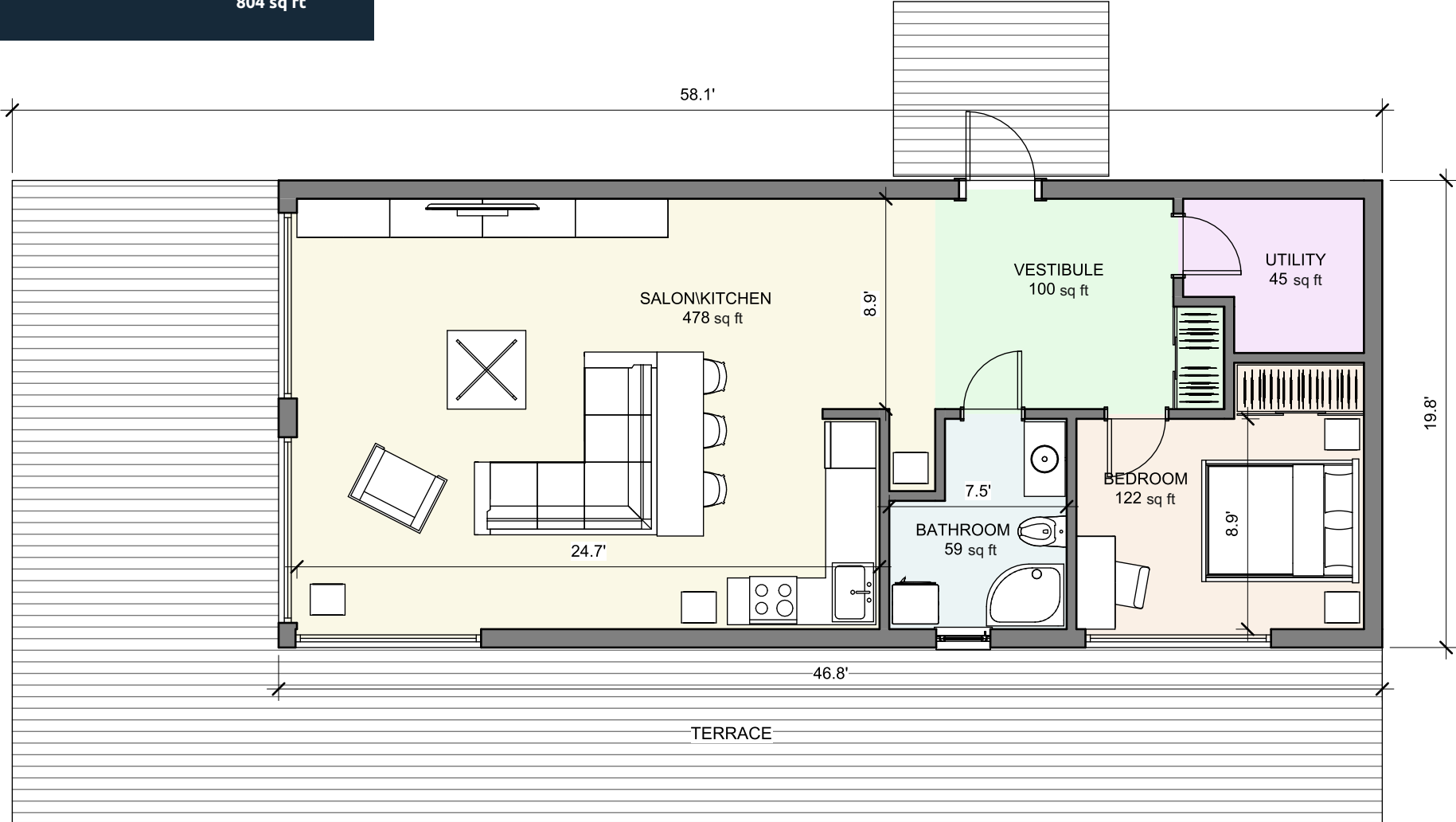
**Simplicity and functionality**  
Cozy home for two.

**The construction of a small, cost-effective house using a 40' container is employed,** while maintaining an elegant and stylish form. The reduced volume of the structure results in lower energy consumption while preserving the original functional layout. This project is designed for singles or couples and is suitable for small lots. It can be used as a year-round or seasonal home.



FIRST FLOOR PLAN

1. Vestibule	100 sq ft
2. Utility	45 sq ft
3. Bedroom	122 sq ft
4. Bathroom	59 sq ft
5. Salon + Kitchen	478 sq ft
TOTAL	804 sq ft



# Syriusz House

Year-round galvanized  
steel construction



## Project description

**LIVING AREA:** 817 sq ft

Number of rooms  
(excluding the living room): 1

Bathrooms + toilets: 1

Garage spaces: 0

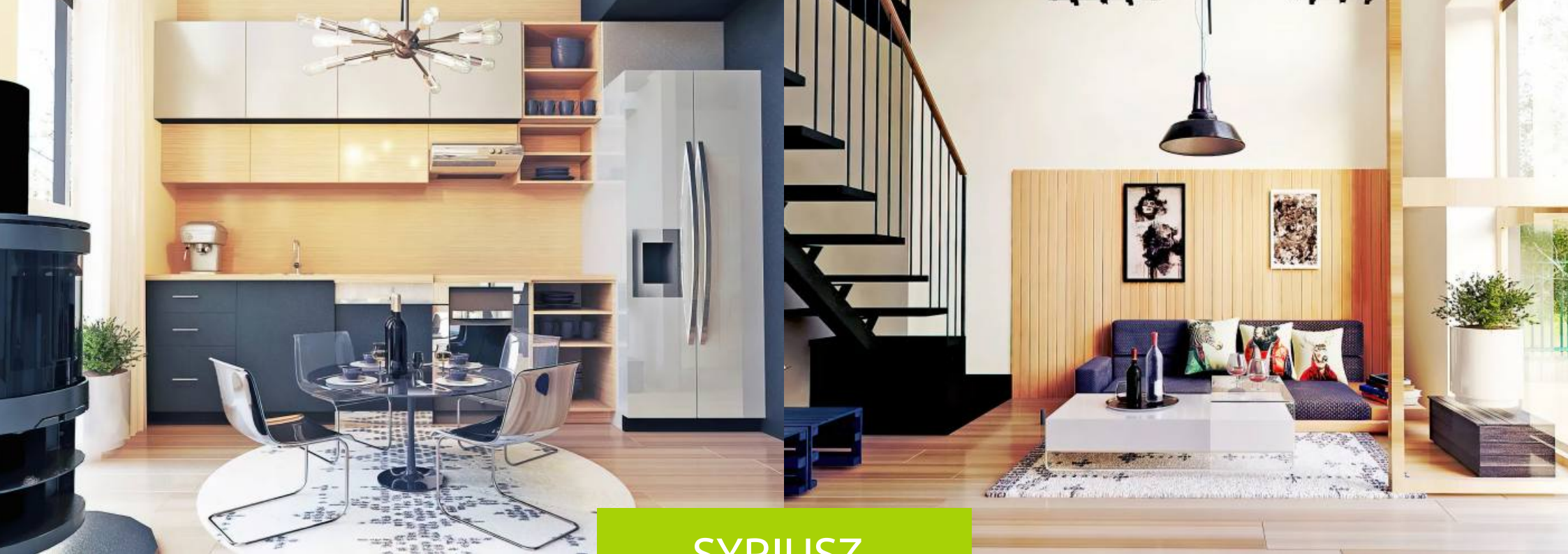
Roof slope angle: 45°



**Contact us** today for more information

Vitay Homes





## SYRIUSZ

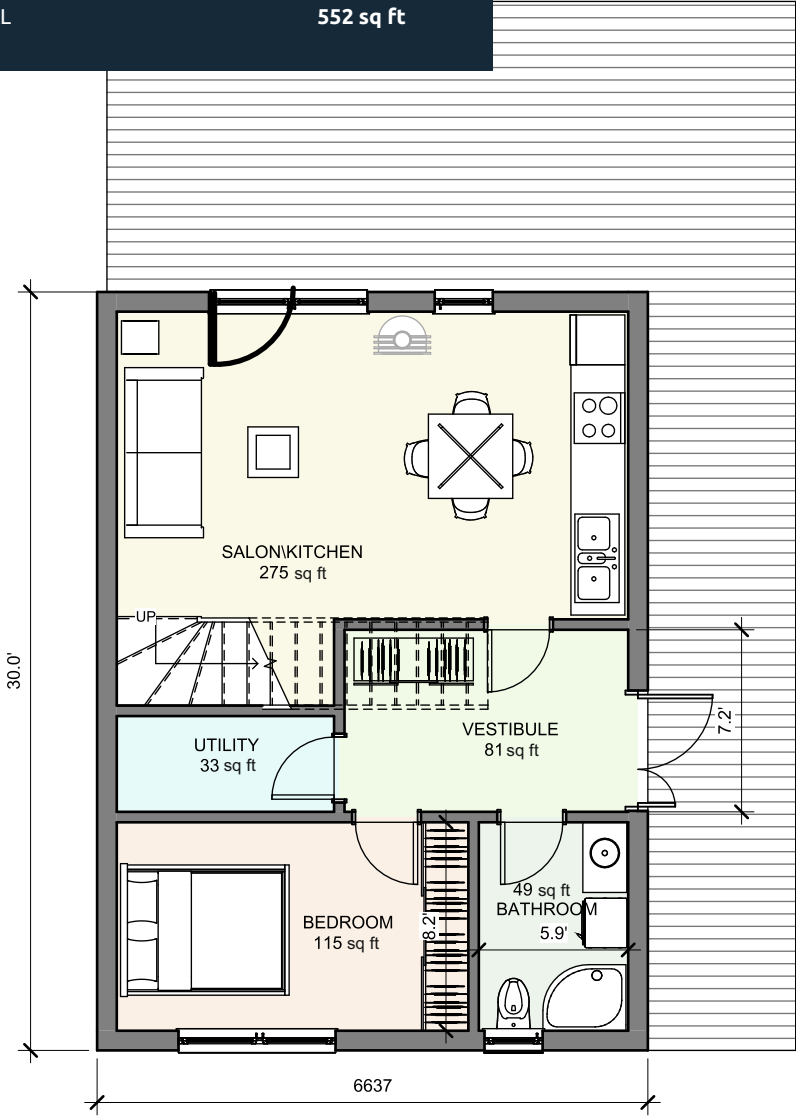


**Single-story SYRIUSZ house without a garage**, with a gable roof, terrace, and a mezzanine. The building forms a compact structure with a large terrace in the shape of the letter L, which connects to the entrance doors. Above the entrance doors, there is a simple yet interesting form of a roof. The entire construction is a compact and modern form.



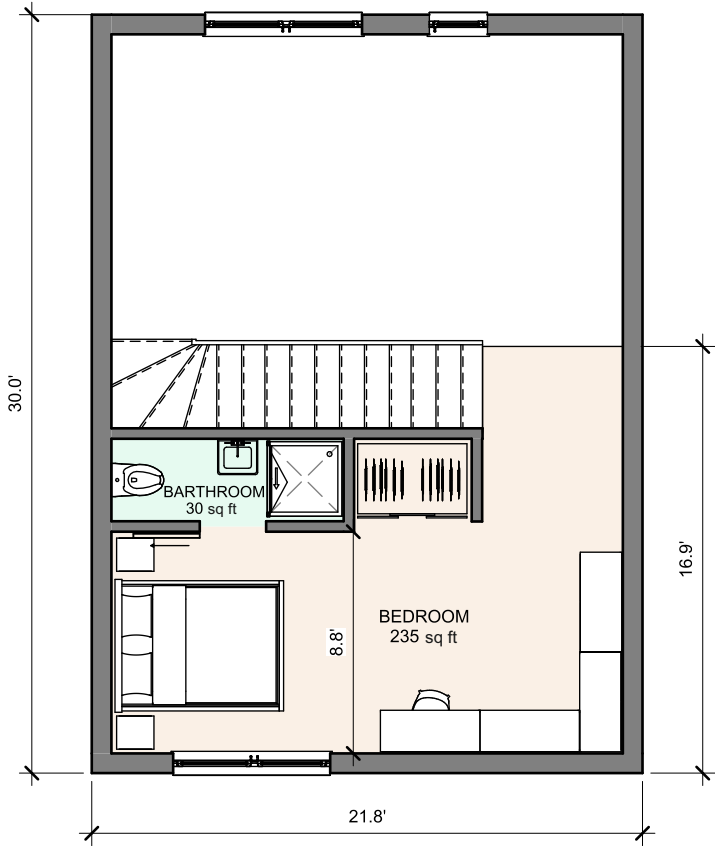
FIRST FLOOR

1. Vestibule	81 sq ft
2. Bedroom	115 sq ft
3. Bathroom	49 sq ft
4. Salon + kitchen	275 sq ft
5. Utility room	33 sq ft
	33 sq ft
TOTAL	552 sq ft



SECOND FLOOR

1. Bedroom	235 sq ft
2. Bathroom	30 sq ft
TOTAL	265 sq ft



# Adara House

Year-round galvanized  
steel construction



## Project description

**LIVING AREA:** 1004 sq ft

Number of rooms  
(excluding the living room): 3

Bathrooms + toilets: 2

Garage spaces: 0

Roof slope angle: 45°



**Contact us** today for more information

Vitay Homes



## ADARA

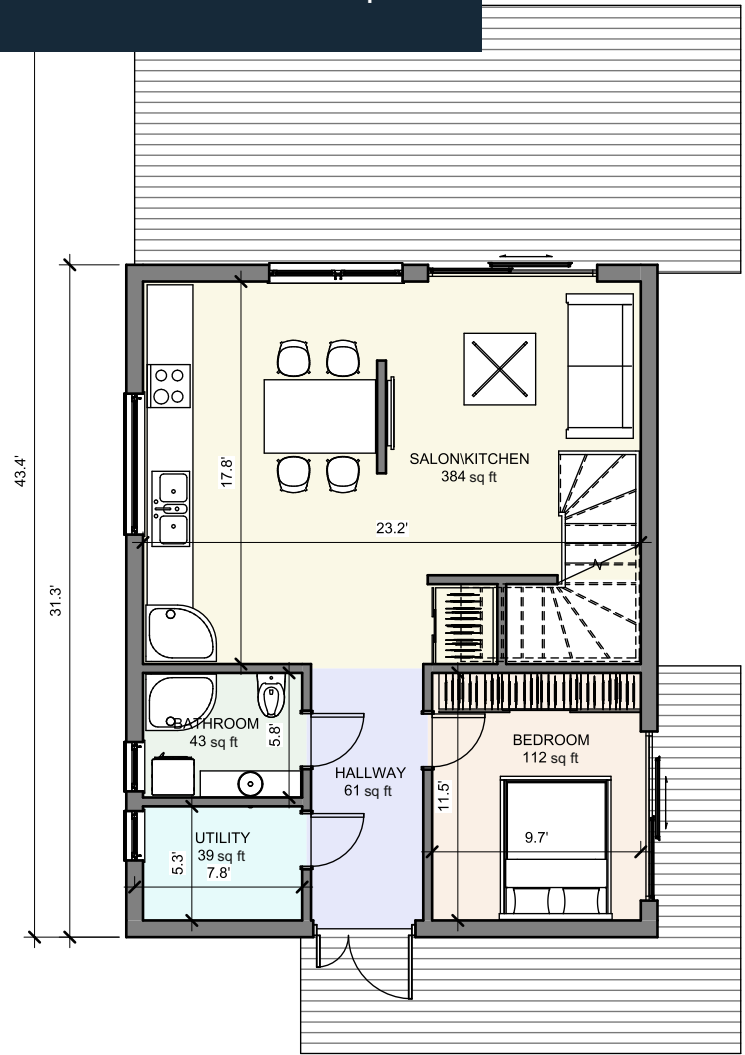


**ADAR is a project of a modern** barn-type house with an attic. It is intended for people looking for a small house that fulfills the residential function or as a recreational house. This is an attractive design of a house with a modern, yet simple shape, large glazing, facade and roof covered with sheet metal and wooden facade cladding. The function of the building consists of: the ground floor with a comfortable living room with access to a spacious terrace, a kitchen with a dining room, a bedroom, a separate toilet and an attic with a mezzanine, two bedrooms and a bathroom.



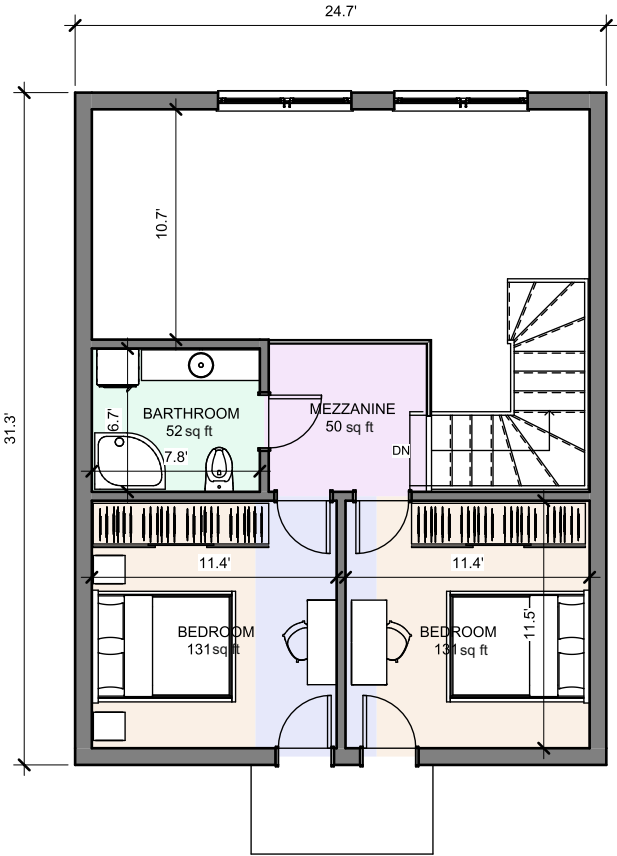
FIRST FLOOR

1. Hallway	61 sq ft
2. Utility	39 sq ft
3. Bathroom	43 sq ft
4. Bedroom	112 sq ft
5. Salon + kitchen	384 sq ft
<hr/>	
TOTAL	639 sq ft



SECOND FLOOR

6. Mezzanine	50 sq ft
7. Bathroom	52 sq ft
8. Bedroom	131 sq ft
4. Bedroom	131 sq ft
<hr/>	
TOTAL	365 sq ft



# Sargas House

Year-round  
wooden-frame house



## Project description

**LIVING AREA:** 1037 sq ft

Number of rooms  
(excluding the living room): 3

Bathrooms + toilets: 2

Garage spaces: 0

Roof slope angle: 40°



**Contact us** today for more information

Vitay Homes



## SARGAS



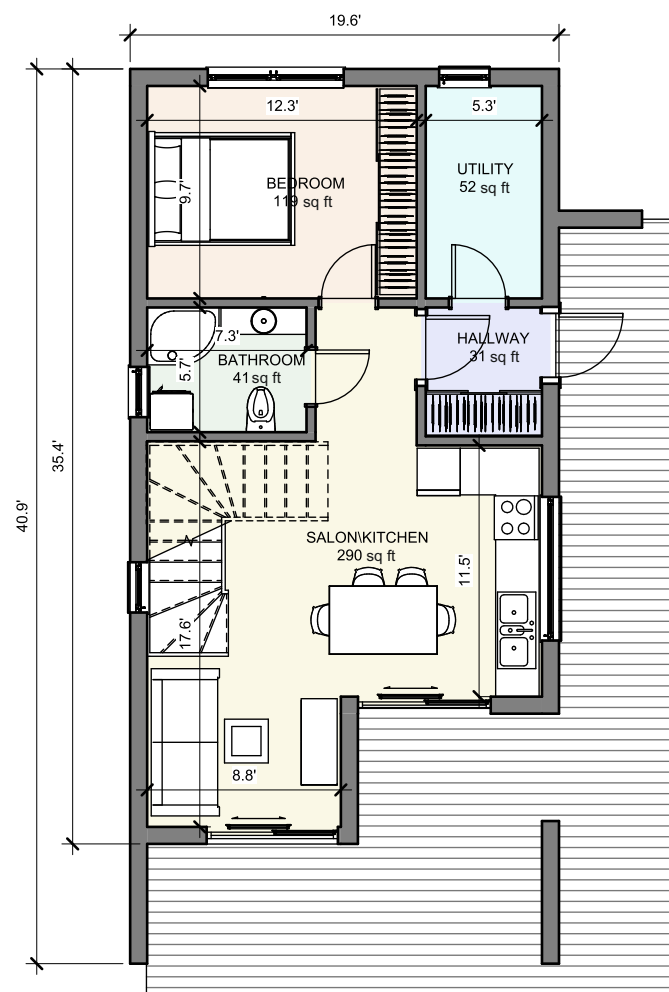
**A modern barn with an interesting balcony and terrace roofing at the top of the building.** The simple form of the barn with a gable roof has been enriched with a modern roof over the main entrance. The external facade is an interesting and effective combination of a graphite seam sheet with a natural wooden cladding. On the ground floor, there is an atmospheric lounge with a kitchenette and a place for a table, and a small, cozy bedroom next to it, with a bathroom with a toilet and a shower.

On this floor there is also a utility room, accessible from the vestibule. In the attic, i.e. in the night zone, there are two bedrooms, a bathroom with a bathtub and a wardrobe.



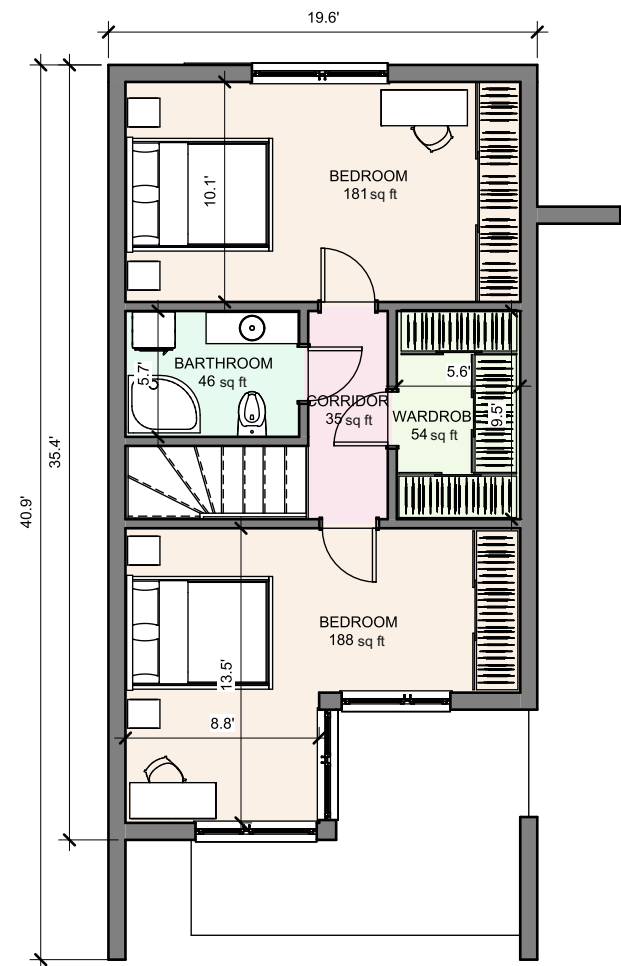
FIRST FLOOR

1. Hallway	31 sq ft
2. Salon + kitchen	290 sq ft
3. Bathroom	41 sq ft
4. Utility	52 sq ft
5. Bedroom	119 sq ft
<hr/>	
TOTAL	534 sq ft



SECOND FLOOR

1. Corridor	35 sq ft
2. Wardrobe	54 sq ft
3. Bathroom	46 sq ft
4. Bedroom	181 sq ft
5. Bedroom	188 sq ft
<hr/>	
TOTAL	503 sq ft





# Antares House

Year-round galvanized  
steel construction



## Project description

**LIVING AREA:** 1236 sq ft

Number of rooms  
(excluding the living room): 3

Bathrooms + toilets: 2

Garage spaces: 0

Roof slope angle: 40°



**Contact us** today for more information

Vitay Homes





## ANTARES

### Modern construction

it is aesthetics that go hand  
in hand with useful values.



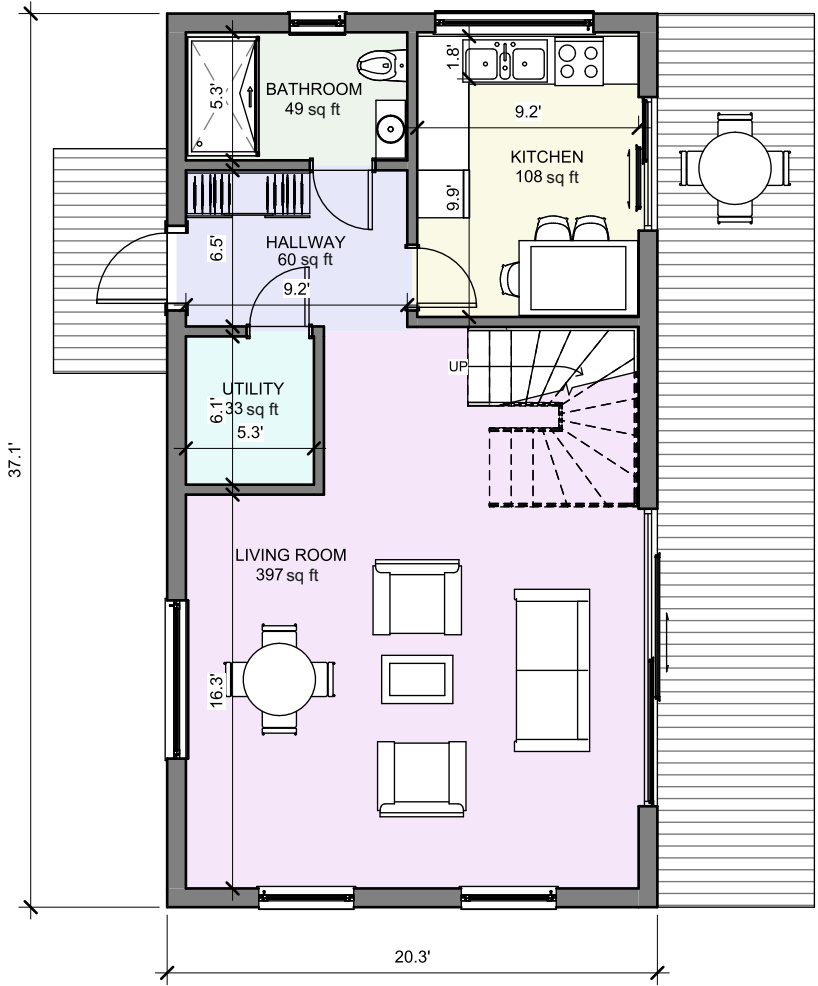
This home consists of a modern living space with an attic, gabled roof and a terrace. The compact body, based on a rectangular plan, was designed with two entrances highlighted with simple roofs.

The cottage is perfect for a couple or a small family and the timeless architecture of this small house makes it easy to fit in almost every landscape.



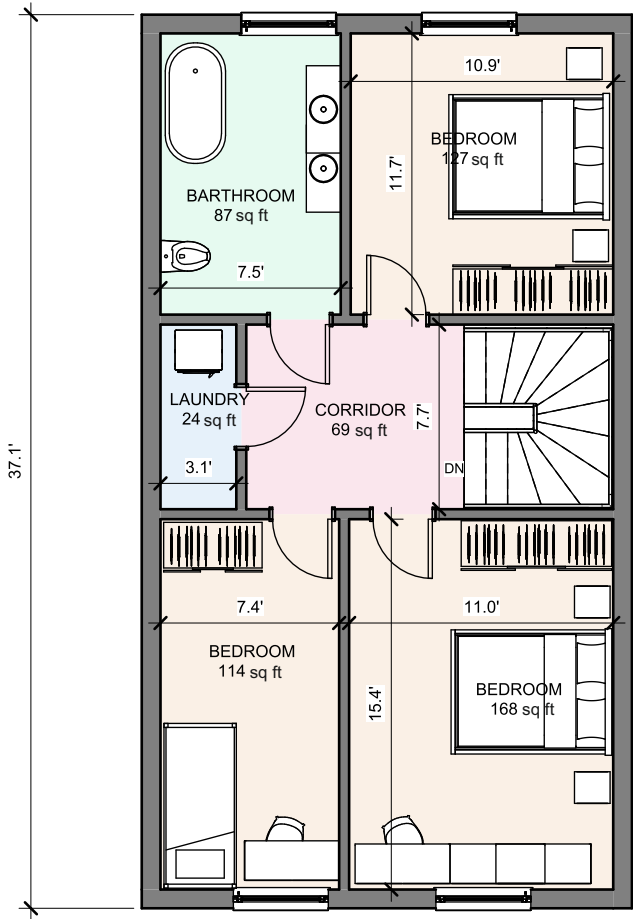
FIRST FLOOR

1. HALLWAY	60 sq ft
2. UTILITY	33 sq ft
3. LIVINGROOM	397 sq ft
4. KITCHEN	108 sq ft
5. BATHROOM	49 sq ft
<hr/>	
TOTAL	647 sq ft



SECOND FLOOR

1. CORRIDOR	69 sq ft
2. BATHROOM	87 sq ft
3. BEDROOM	127 sq ft
4. BEDROOM	168 sq ft
5. BEDROOM	590 sq ft
<hr/>	
TOTAL	647 sq ft



# Kanopus House

Year-round galvanized  
steel construction





## Project description

**LIVING AREA:** 1163 sq ft

Number of rooms  
(excluding the living room): 3

Bathrooms + toilets: 2

Garage spaces: 0

Roof slope angle: 45°



**Contact us** today for more information

Vitay Homes





## KANOPUS

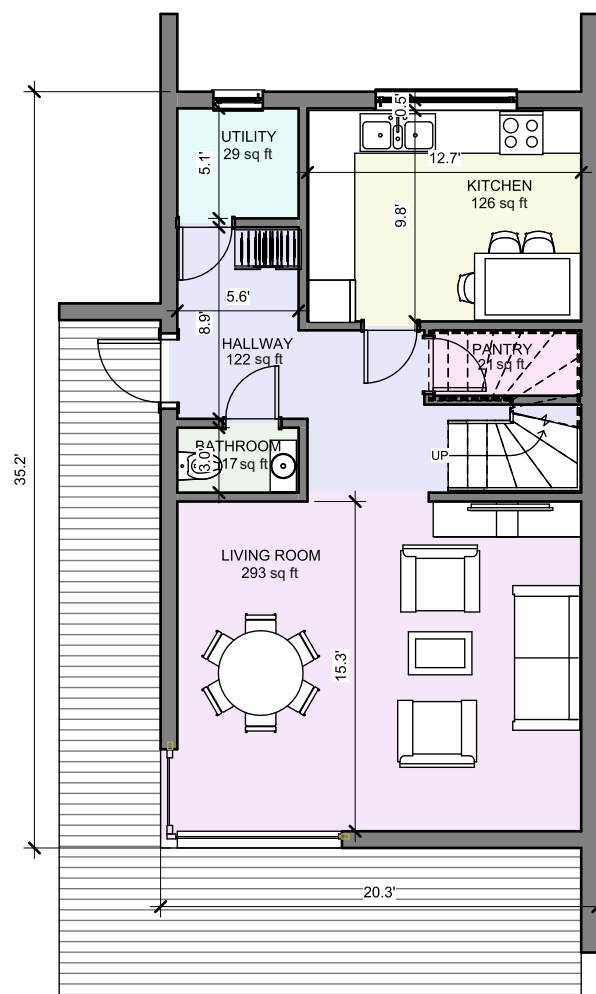


**Kanopus is a two-story house for a family of 4,** which is a modern interpretation of a traditional form. The building will work both as a year-round city house and a summer house in the bosom of nature. Compact sizes, characteristic arcades and the use of wood materials contribute to coziness and a sense of security. The high knee wall and the so-called the cathedral ceiling in the two bedrooms of the attic give the opportunity to use original design solutions in the interiors. Large glazing causes the effect of combining bright interiors with the surroundings, thanks to which the covered terraces become an integral part of the house.



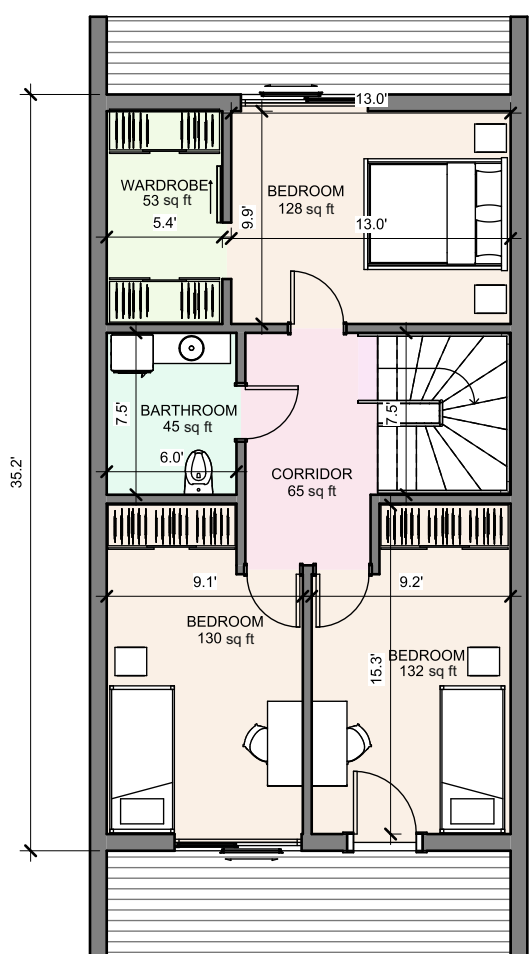
# FIRST FLOOR

1. HALLWAY	122 sq ft
2. UTILITY	29 sq ft
3. KITCHEN	126 sq ft
4. PANTRY	21 sq ft
5. LIVINGROOM	293 sq ft
6. BATHROOM	17 sq ft
<hr/>	
TOTAL	609 sq ft



# SECOND FLOOR

1. CORRIDOR	65 sq ft
2. WARDROBE	53 sq ft
3. BEDROOM	128 sq ft
4. BATHROOM	45 sq ft
5. BEDROOM	130 sq ft
6. BEDROOM	132 sq ft
<hr/>	
TOTAL	554 sq ft



# Deneb House

Year-round galvanized  
steel construction





## Project description

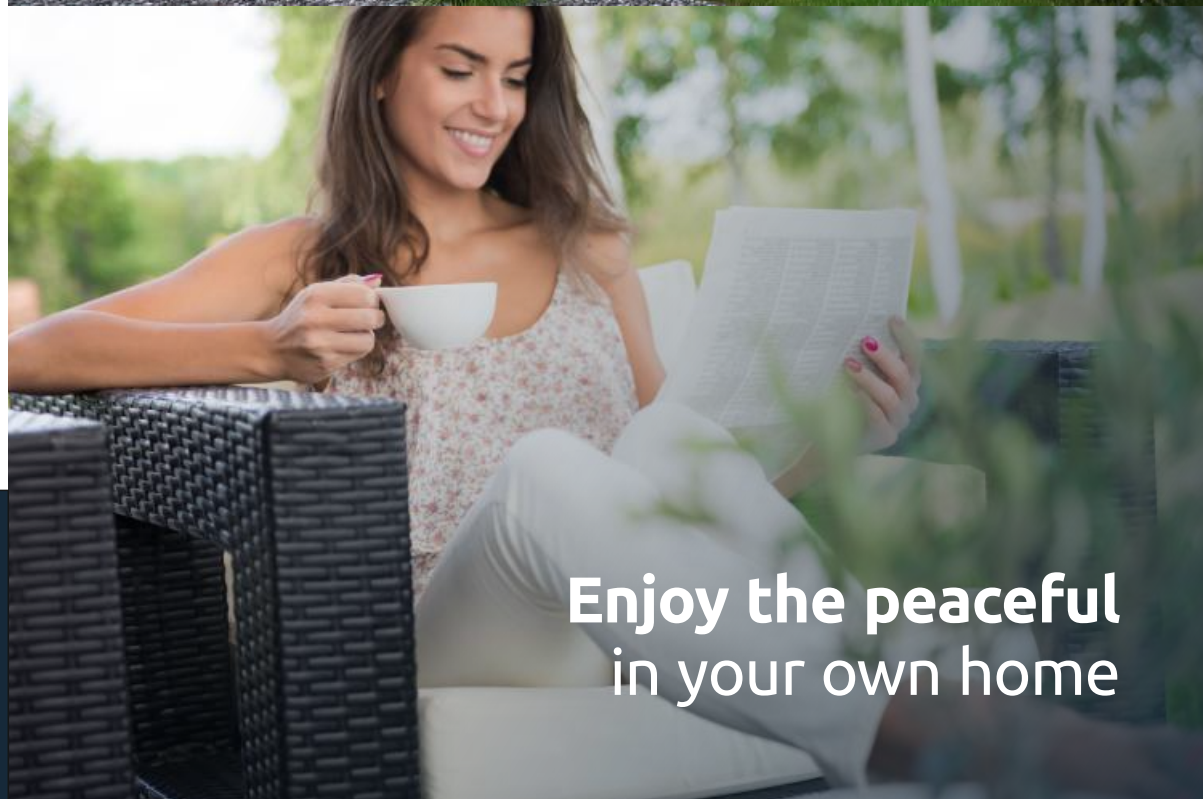
**LIVING AREA:** 1210 sq ft

Number of rooms  
(excluding the living room): 4

Bathrooms + toilets: 2

Garage spaces: 0

Roof slope angle: 35°



**Contact us** today for more information

Vitay Homes

**Enjoy the peaceful**  
in your own home





## DENEB

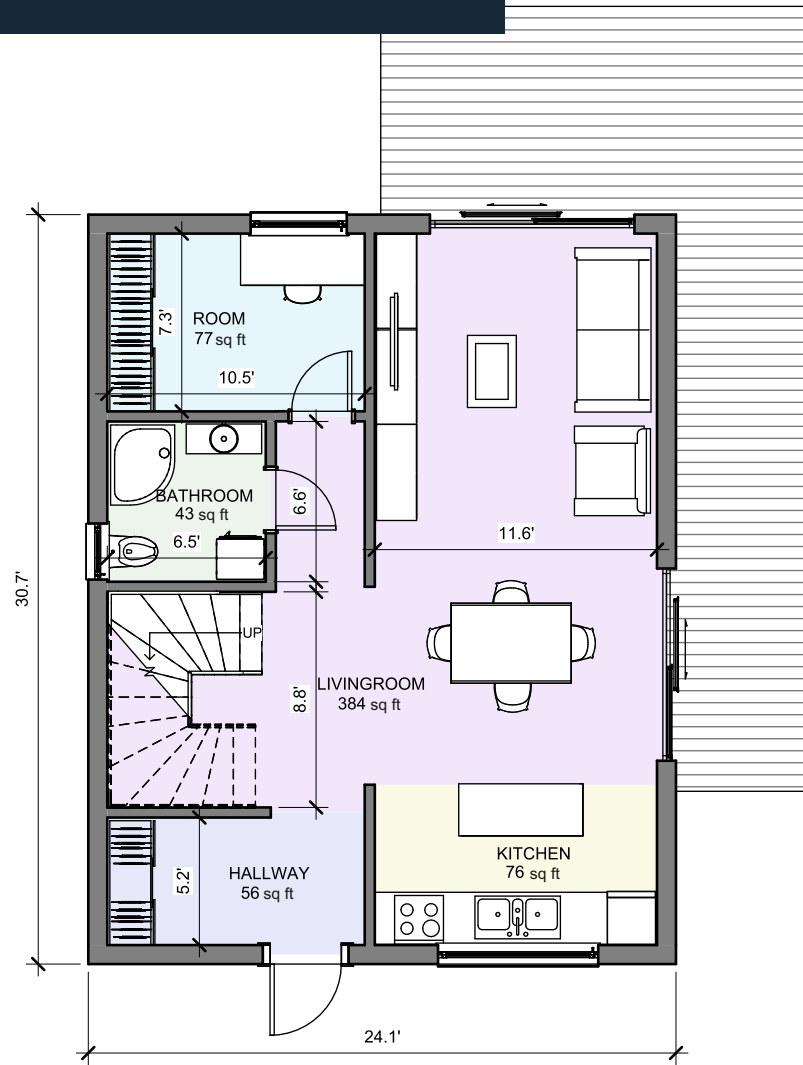
A medium-sized, cozy one-story house, without a basement, with a usable attic. The ground floor is a spacious day zone, bright living room + dining room, kitchen, hall, toilet, guest room. The attic consists of three rooms, a bathroom and a hall. The project is available in a mirror image. The body of the building has a simple, compact form, so its implementation will not consume too many financial resources. In addition to the minimalist shape, the modern and original appearance of the house is influenced by the structure of the roof. The house was covered with an economical gable roof without eaves, which finds many supporters among people who appreciate modernist solutions.

The DENEB project is a one-story house with an attic, thanks to which the household members can enjoy greater privacy. The living area included in the project will certainly satisfy people who like to enjoy moments together with their families. The living room, kitchen and dining room have been combined into an open and incredibly spacious zone. This solution makes the interior take on a modern character. On the ground floor there is a toilet and an additional room that can be used as a guest bedroom or a study. Three bedrooms in the attic are perfect for a family of 2-4 people. A large bathroom for all household members is provided by the staircase on the first floor. Barbecuing and family meals will be made more pleasant by the terrace included in the project.



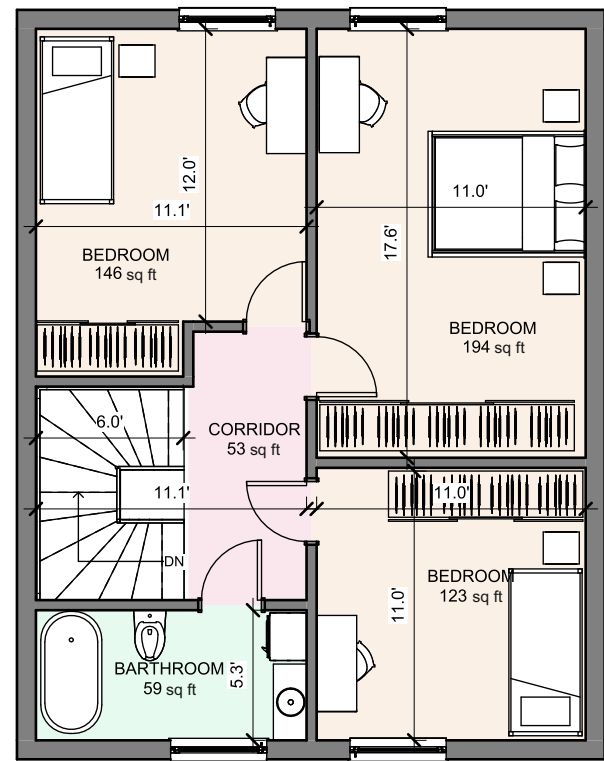
FIRST FLOOR

1. HALLWAY	56 sq ft
2. KITCHEN	76 sq ft
3. LIVINGROOM	384 sq ft
4. ROOM	77 sq ft
5. BATHROOM	43 sq ft
<hr/>	
TOTAL	635 sq ft



SECOND FLOOR

1. CORRIDOR	53 sq ft
2. BEDROOM	146 sq ft
3. BEDROOM	194 sq ft
4. BEDROOM	123 sq ft
5. BATHROOM	59 sq ft
<hr/>	
TOTAL	575 sq ft



# Tiaki House

Year-round galvanized  
steel construction





## Project description

**LIVING AREA:** 1213 sq ft

Number of rooms  
(excluding the living room): 4

Bathrooms + toilets: 2

Garage spaces: 0

Roof slope angle: 35°



**Contact us** today for more information

Vitay Homes



## TIAKI

TIAKI is a different concept of the DENEK project.

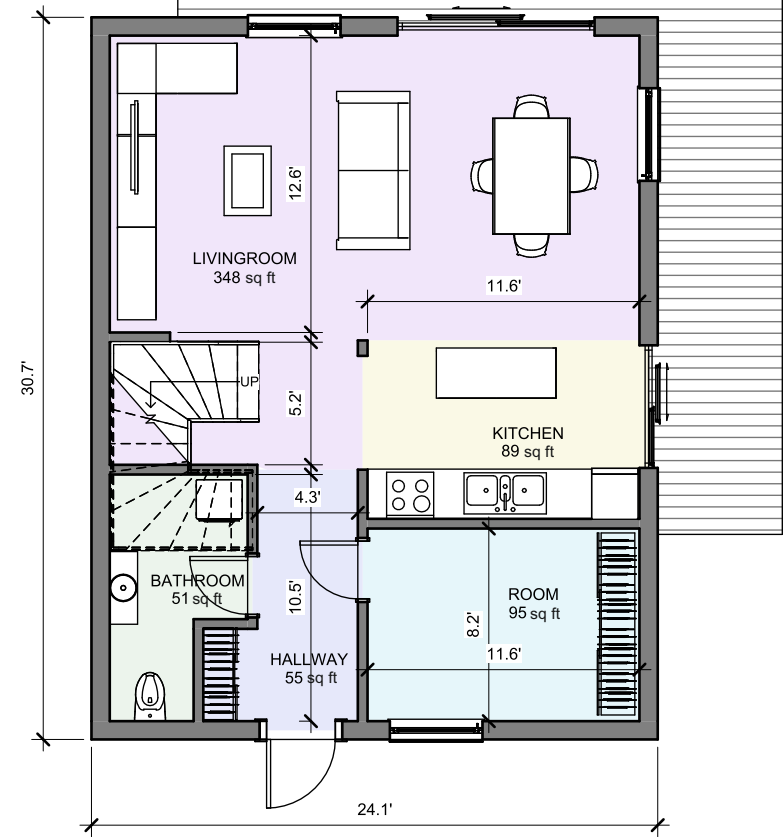
A medium-sized, cozy one-story house, without a basement, with a usable attic. The ground floor is a spacious day zone, bright living room + dining room, kitchen, hall, toilet, guest room. The attic consists of three rooms, a bathroom and a hall. The project is available in a mirror image. The body of the building has a simple, compact form, so its implementation will not consume too many financial resources. In addition to the minimalist shape, the modern and original appearance of the house is influenced by the structure of the roof. The house was covered with an economical gable roof without eaves, which finds many supporters among people who appreciate modernist solutions.

**The TIAKI project is a one-story house with an attic,** thanks to which the household members can enjoy greater privacy. The living area included in the project will certainly satisfy people who like to enjoy moments together with their families. The living room, kitchen and dining room have been combined into an open and incredibly spacious zone. This solution makes the interior take on a modern character. On the ground floor there is a toilet and an additional room that can be used as a guest bedroom or a study. Three bedrooms in the attic are perfect for a family of 2-4 people. A large bathroom for all household members is provided by the staircase on the first floor. Barbecuing and family meals will be made more pleasant by the terrace included in the project.



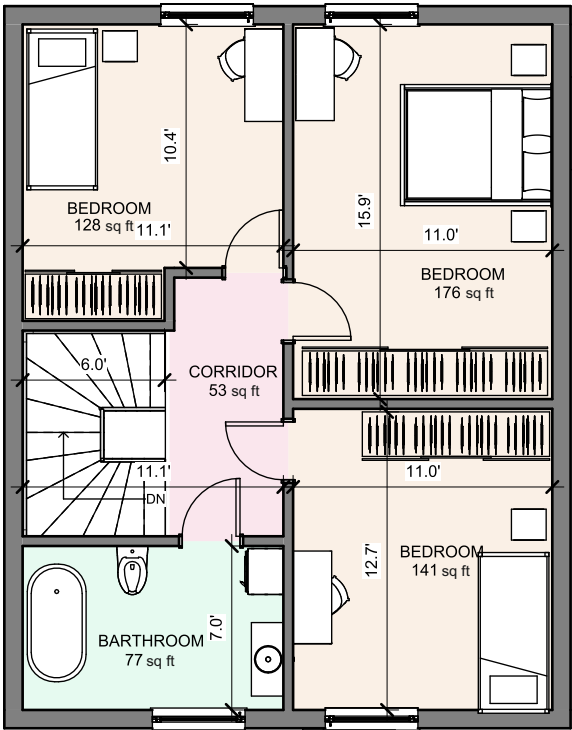
FIRST FLOOR

1. HALLWAY	55 sq ft
2. KITCHEN	89 sq ft
3. LIVINGROOM	348 sq ft
4. ROOM	95 sq ft
5. BATHROOM	51 sq ft
<hr/>	
TOTAL	638 sq ft



SECOND FLOOR

1. CORRIDOR	53 sq ft
2. BEDROOM	128 sq ft
3. BEDROOM	176 sq ft
4. BEDROOM	141 sq ft
5. BATHROOM	77 sq ft
<hr/>	
TOTAL	575 sq ft



# Heze House

Year-round galvanized  
steel construction





## Project description

**LIVING AREA:** 1524 sq ft

Number of rooms  
(excluding the living room): 3

Bathrooms + toilets: 2

Garage spaces: 0

Roof slope angle: 35°



**Contact us** today for more information

Vitay Homes





## HEZE

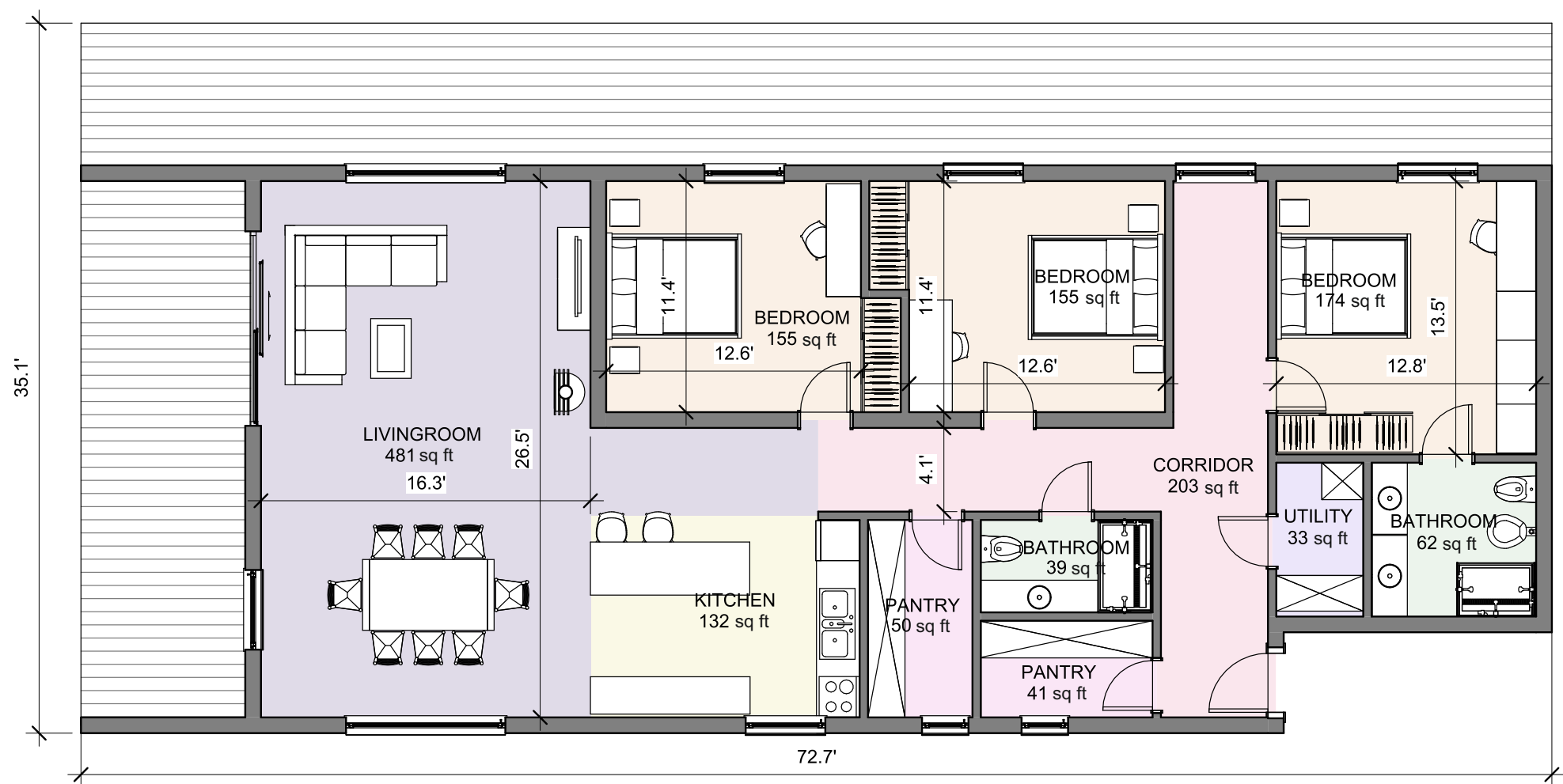


Heze is a modern house for a family of 4-6 people. The home has a traditional shape with a gable roof. Thanks to the varied finishing materials. HEZE is an interesting and original alternative to popular forms of residential buildings. The visual connection between the roof and the facade obtained by covering both elements with panels of dark powder coated sheet makes the building a monolith. Geometric expanses of wooden panels are accentuated by the shifting outline of the home creating an impressive entrance and a gabled wall. HEZE consists of a rectangular plan and is surrounded from the outside by a large, wrap around terrace which gives greater living/leisure space which is accessible from a number of rooms. The advantage of the Heze project is the possibility of introducing functional changes and adapting the space to the individual, personalized requirements of our clients. This makes this project is a universal solution for families with different needs, and what is more, it facilitates its evolution along with changes in the life of the household members.



# FIRST FLOOR

1. CORRIDOR	203 sq ft	7. BATHROOM	39 sq ft
2. PANTRY	41 sq ft	8. BEDROOM	155 sq ft
3. UTILITY	33 sq ft	9. PANTRY	50 sq ft
4. BEDROOM	174 sq ft	10. KITCHEN	132 sq ft
5. BATHROOM	62 sq ft	11. LIVINGROOM	481 sq ft
6. BEDROOM	155 sq ft		
TOTAL		1524 sq ft	



# Fang House

Year-round galvanized  
steel construction  
with a garage



## Project description

**LIVING AREA:** 2445 sq ft

Number of rooms  
(excluding the living room): 3

Bathrooms + toilets: 2

Garage spaces: 2

Roof slope angle: 35°



**Contact us** today for more information

Vitay Homes





## FANG

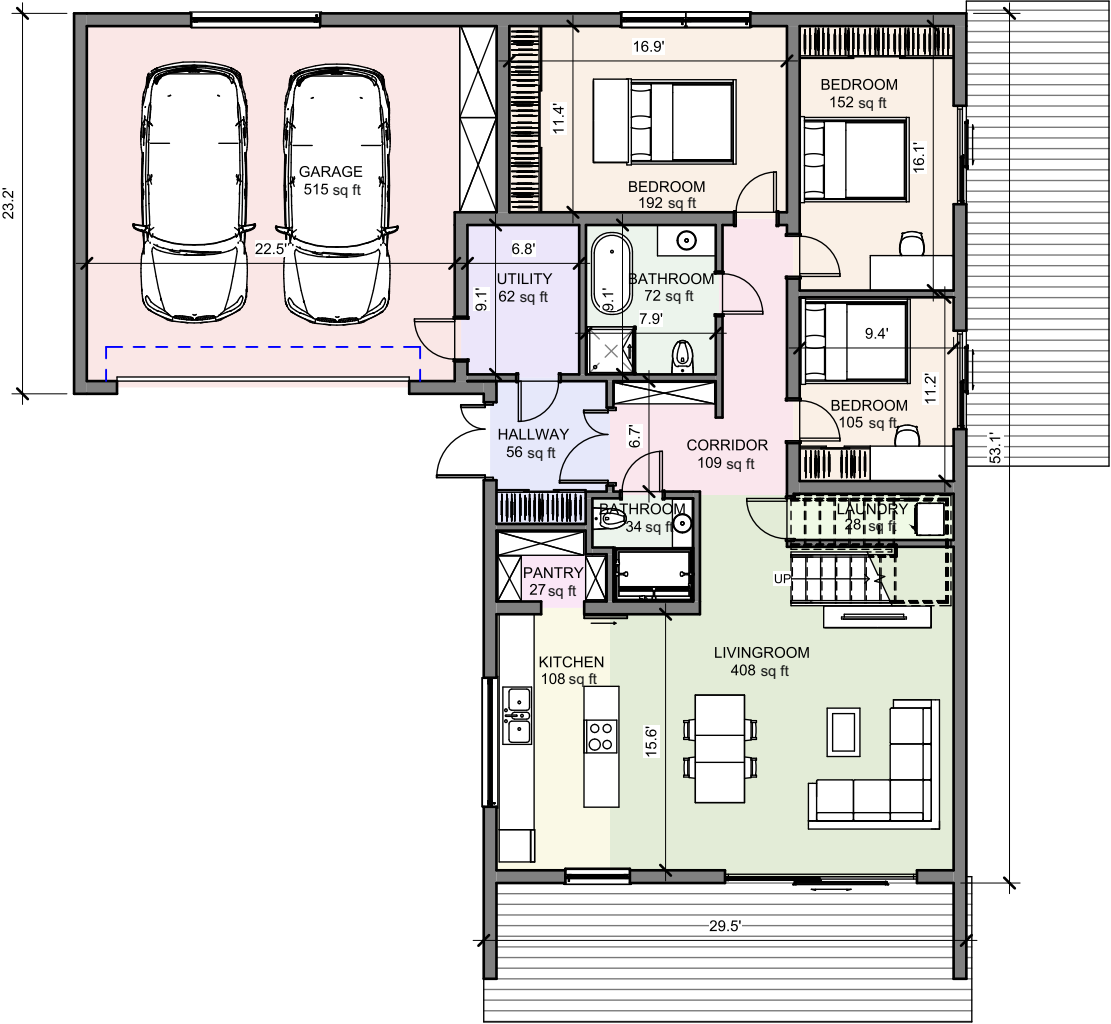


Design of a one-story FANG house with a spacious garage, a gable roof, a terrace and a huge mezzanine in the attic. FANG is a one-story house with an attic, thanks to which the household members can enjoy greater privacy. The living area included in the project will certainly satisfy people who like to enjoy moments together with their families. The living room, kitchen and dining room have been combined into an open and incredibly spacious zone. This solution makes the interior take on a modern character. Three bedrooms are perfect for a family of 2-4 people.



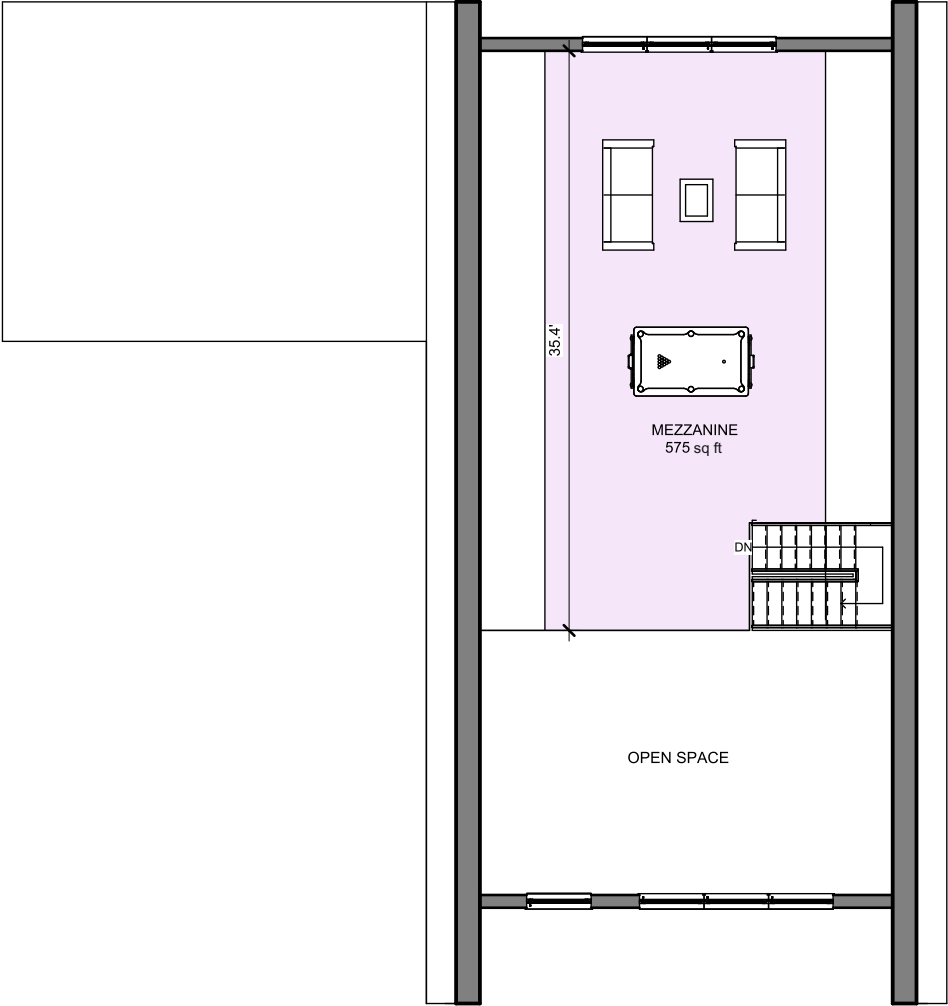
FIRST FLOOR

1. HALLWAY	56 sq ft	8. BEDROOM	105 sq ft
2. BATHROOM	34 sq ft	9. BEDROOM	152 sq ft
3. CORRIDOR	109 sq ft	10. BEDROOM	192 sq ft
4. LIVING ROOM	408 sq ft	11. BATHROOM	72 sq ft
5. KITCHEN	108 sq ft	12. UTILITY	62 sq ft
6. PANTRY	27 sq ft	13. GARAGE	515 sq ft
7. LAUNDRY	28 sq ft		
TOTAL		1869 sq ft	



SECOND FLOOR

1. MEZZANINE	575 sq ft
TOTAL	575 sq ft





Vitay Homes  
vitayhomes.com

**Theodore Topouzis**



401 865 - 9303  
ttopouzis@taclosinglaw.com



**Tom Sadowski**

401 314 - 5550  
tom@vitayhomes.com



**Chris Topouzis**

401 626 - 6865  
ctopouzis@taclosinglaw.com



GETS  
Global Enterprise & Technology Systems



Topouzis & Associates, P.C.  
*Attorneys at Law*

