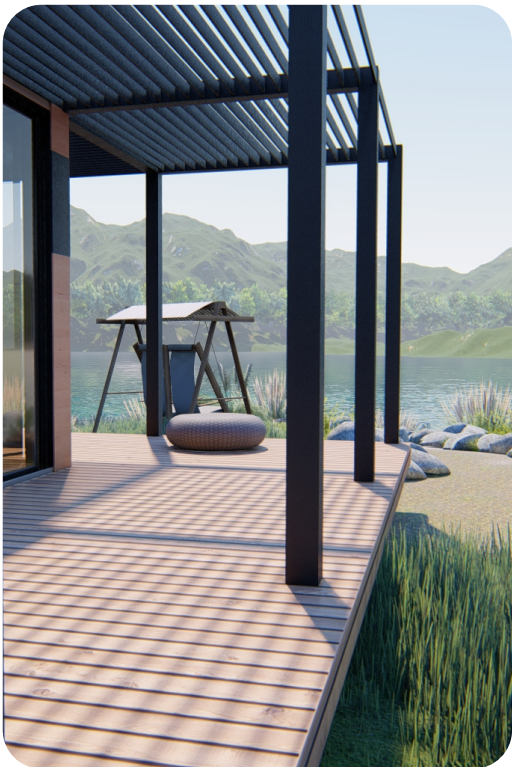




GETS  
green energy technology system

Vitay Homes





# Single-Family House Your Very Own

## OUR ADVANTAGES

Super quality  
Precision-engineered  
Flexibility  
Affordability

Energy efficiency  
Latest Technologies  
Custom Design  
Quick and easy Installation





## Choose a design

We have projects in every style and size - you will surely find the perfect one. You can always count on our support. We will help you match the project to your property.



## Adapt the technology to your needs

Tell us about your expectations. We will help you select the appropriate construction technology to ensure that the chosen project best meets your needs and fulfills all requirements.



## Receive your home

We will take care of everything: prepare the documentation, order the materials and build your dream house. You, meanwhile, can choose furniture and other interior furnishings.





Our construction process and home designs offer consistent accessibility to high-quality building materials coupled with energy efficiency and extreme flexibility to present outstanding housing options which in all aspects surpass traditional offerings in today's housing market.

## Magnolia 527

LIVING AREA: 527 SQ FT

LENGTH: 30'

WIDTH: 22'





The Vitay Homes' construction process requires very minimal infrastructure and has practically zero impact on the site environment. Our homes are pre-fabricated and built on solid helical piers which depending site specifics can eliminate the need for conventional foundations. This in turn translates into significant savings in time and construction costs. In fact, on average our home installation takes fewer than 7 days from breaking ground to moving in.

## Magnolia 1340

LIVING AREA: 1340 SQ FT

LENGTH: 40'

WIDTH: 40'



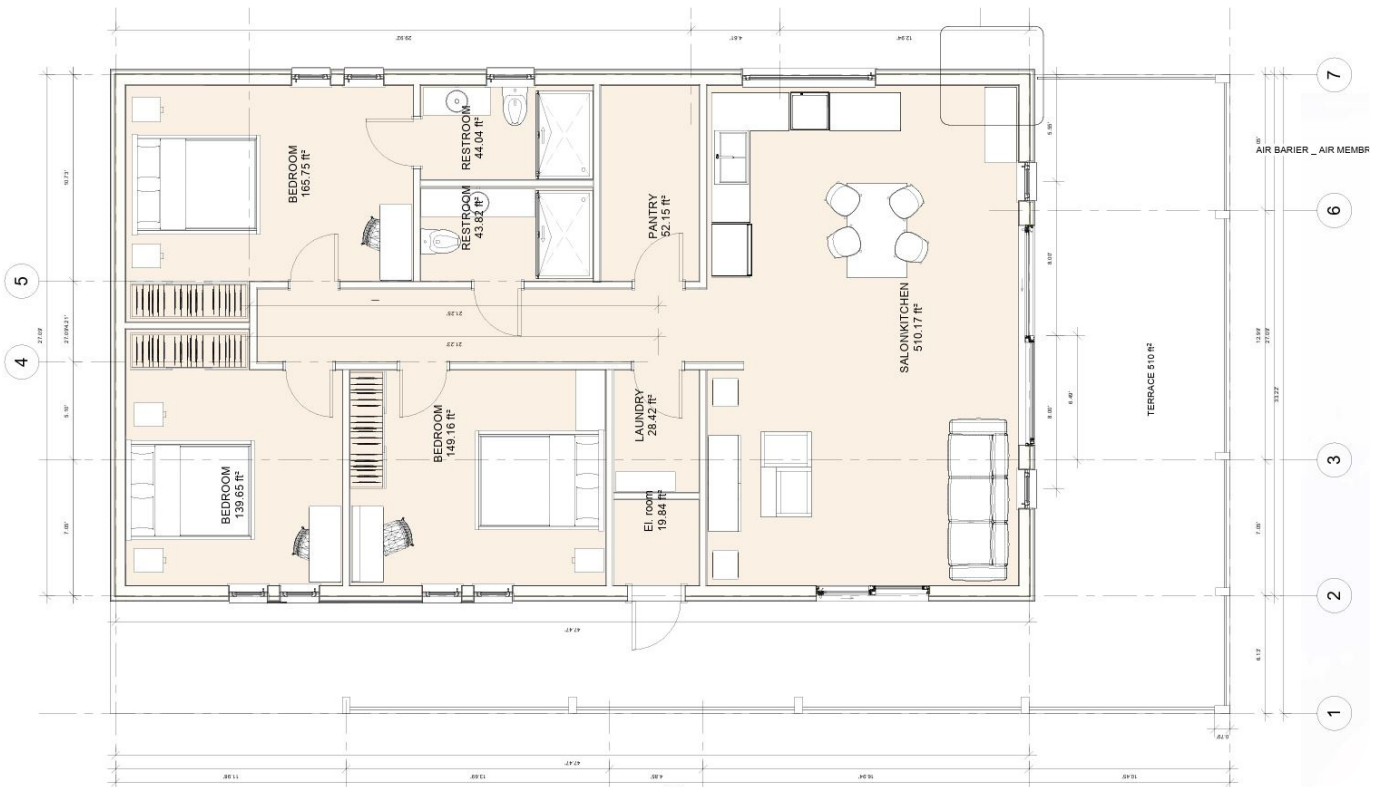


## Coastal 1100

LIVING AREA: 1152 SQ. FT

LENGTH: 58'

WIDTH: 27'





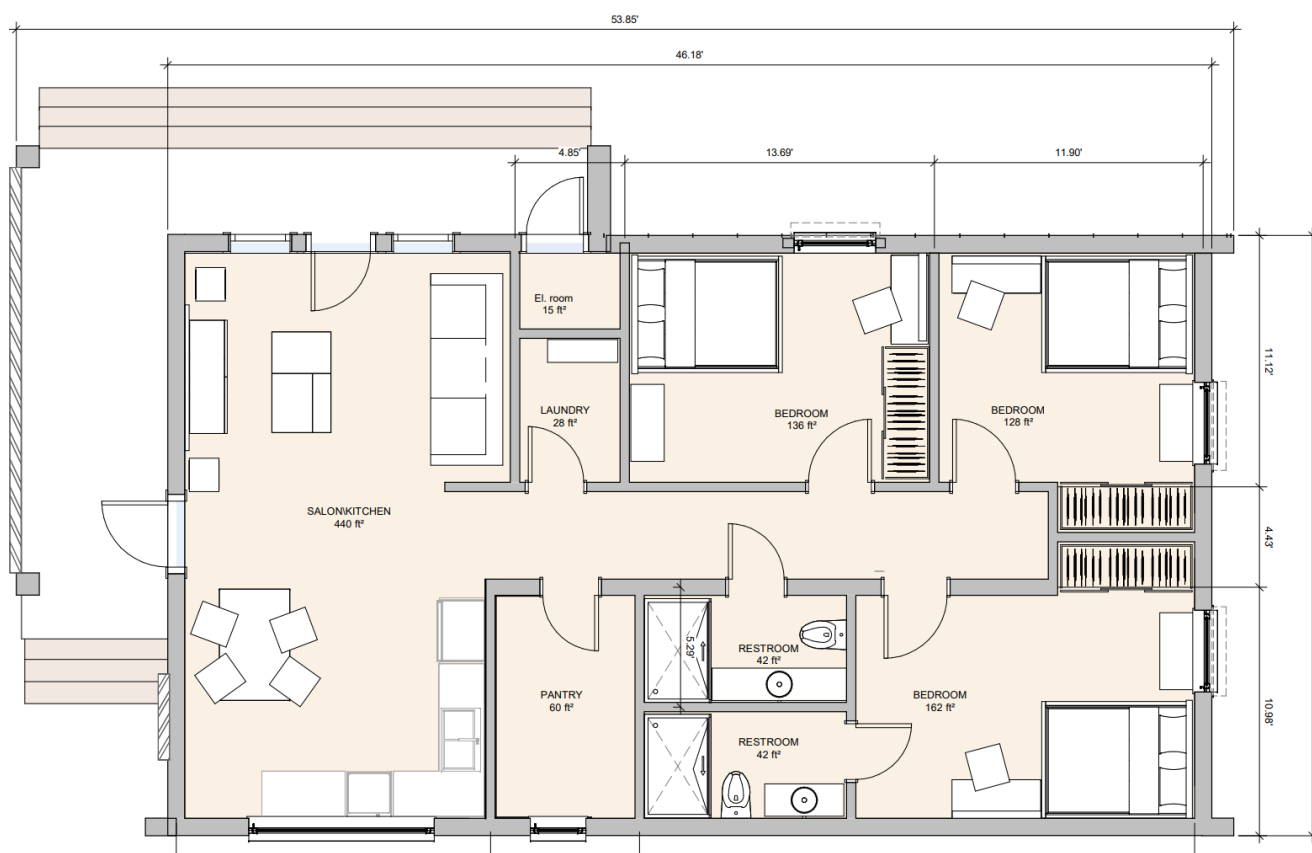


## Edison House

LIVING AREA: 1053 SQ FT

LENGTH: 46'

WIDTH: 27'



Our homes can be connected to public utilities or have their own independent water supply, sanitation system and sustainable electricity source.



Vitay Homes modular and universal/ sturdy designs allow our homes to be relocated if desired for use at another site thereby preserving the original site for future use and redevelopment.

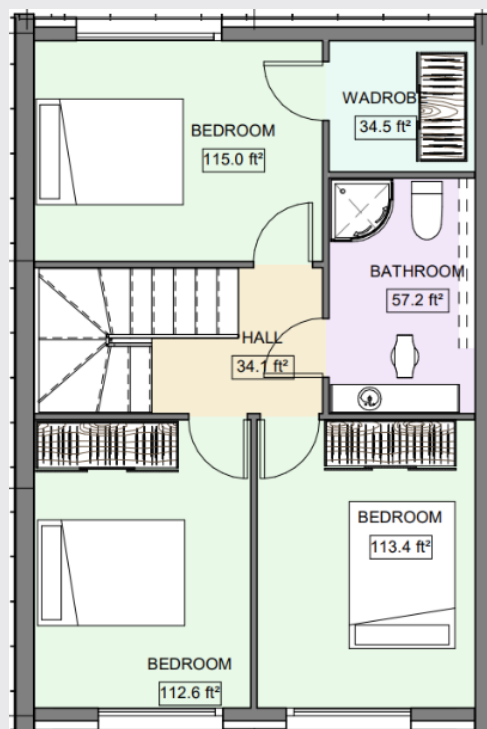
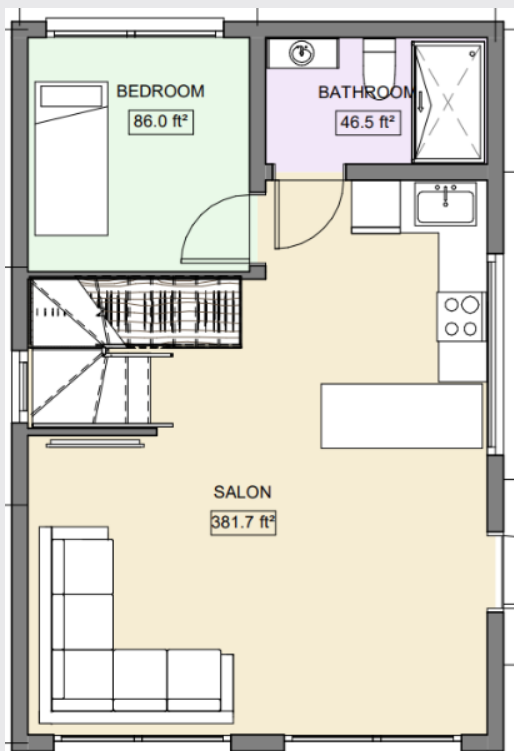
Adaptable in design and layout to accommodate different site size and layout configurations, our customers can chose one of our many exciting floor plans or we can create a customized layout based on personal preference, including the option to be delivered fully furnished.

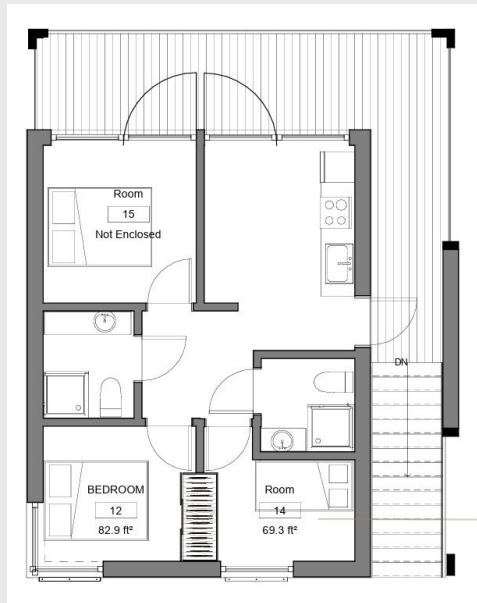
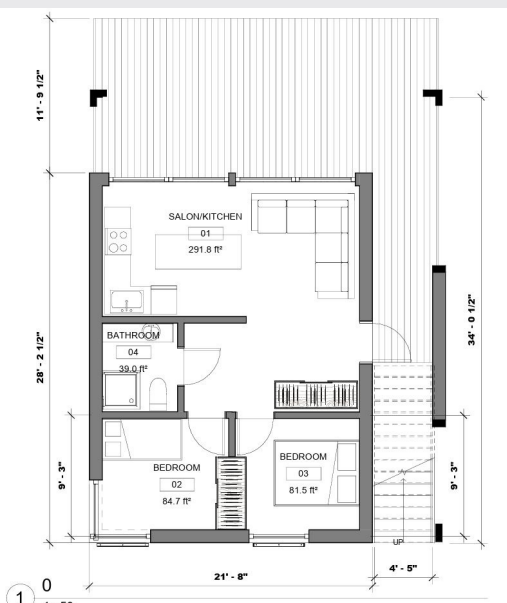
## Villanuova 981

LIVING AREA: 981 SQ FT

LENGTH: 19'

WIDTH: 29'



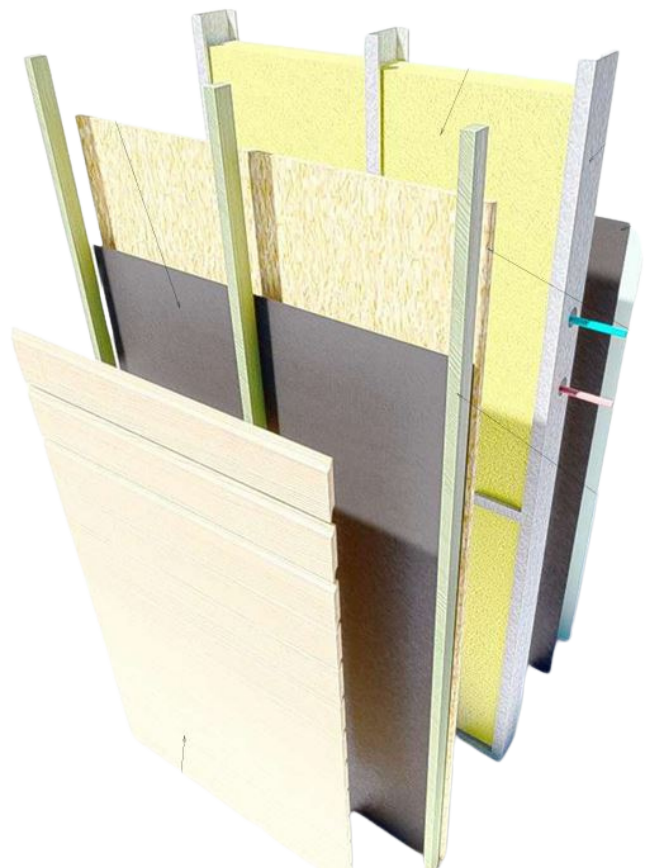
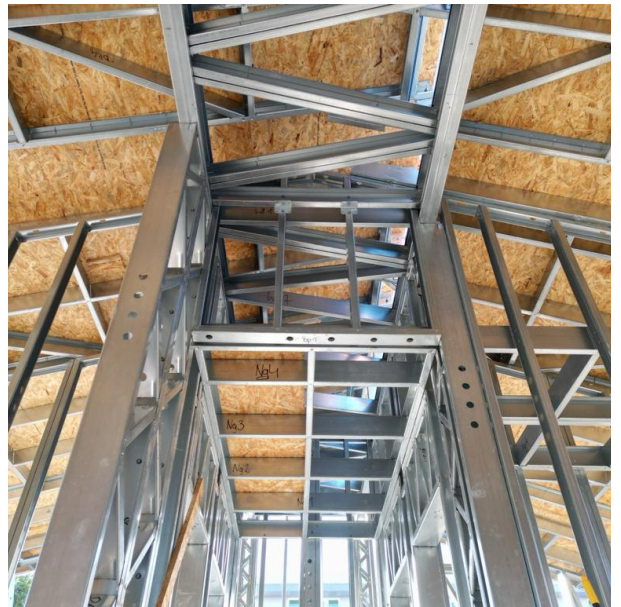


**DUPLEX 2000 SQ FT**



# Steel construction

It's common within the steel building industry to find suppliers that can offer a 10- or even 25-year warranty that covers the structural integrity of the steel buildings they provide. Or worse yet, some suppliers only pass through a one-year manufacturer's warranty. VITAY HOMES™ backs up every steel framed building we sell with 50 years of structural warranty coverage. Our warranties are backed by VITAY HOMES™ as a company, not as the steel manufacturer, because VITAY HOMES™ stands behind its craftsmanship.

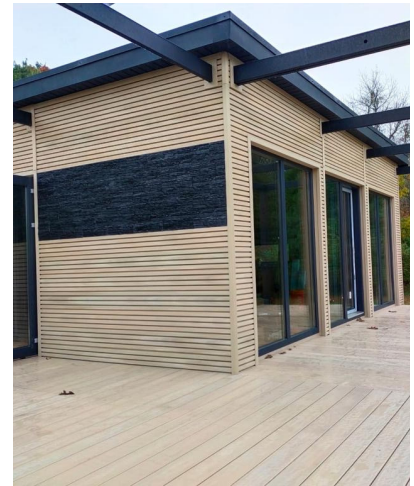




We make sure the production process has a minimal impact on the environment, but our goal is also to be environmentally friendly throughout the lifetime use of the house.

Solar panels as well as high-grade wall, floor and roof thermal insulation provide huge savings – unattainable in classic houses – in heating, cooling and energy consumption.

OUR HOMES CAN BE CONNECTED TO PUBLIC UTILITIES OR HAVE THEIR OWN INDEPENDENT WATER SUPPLY, SANITATION SYSTEM AND SUSTAINABLE ELECTRICITY SOURCE.



## Transport

Vitay Homes is perfect for a quick, safe and solid installation. Since the house is prefabricated and built on solid helical piers (no conventional foundations needed), it takes fewer than 7 days, on average, from groundbreaking to moving in. No extra heavy-duty machinery is needed either.

