



PROJECT BY

SOMESHWAR
GROUP

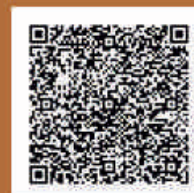
www.sgardencity.in

SITE : **SOMESHWAR GARDEN CITY**
Opp. Dhara Vidhyalay, Nr.Ruturaj Flat, T. B. Road, Mehsana

CONTACT : **+91 98257 14677, +91 98250 15196**

ARCHITECT :
HET ARCHITECTS
PUNJAL PATEL

STRUCTURE :
Q12 consultants
Regd. Firm - 0800203847



scan for location

RERA Reg. No. : PR/GJ/MEHSANA/MAHESANA/Others/MAA08916/180821

REDBOX.CO.IN - 9896 310013

SOMESHWAR
GARDEN
CITY

2 BHK PROUD LIVING APARTMENT







SPACIOUS

ENOUGH SPACE TO ACCOMMODATE
ALL YOUR DREAMS





WONDERFUL ABODE
THAT NURTURE YOUR DREAMS



G+7 STORIED TOWER WITH 18 WINGS

2 BHK COMFORT APARTMENTS

LIFESTYLE GARDEN

CLUB HOUSE WITH FULL AMENITIES

SUFFICIENT PARKING



COMMERCIAL
SPACE





SPECIFICATIONS



CHILDREN PLAY AREA



LANDSCAPED GARDEN



SENIOR CITIZEN AREA



CLUB HOUSE



GYM



GAZEBO



TEMPLE



WALKING TRACK



OPEN AIR THEATRE



VISITOR PARKING



FIRE SAFETY



24 HOUR WATER SUPPLY



ATTRACTIVE MAIN GATE



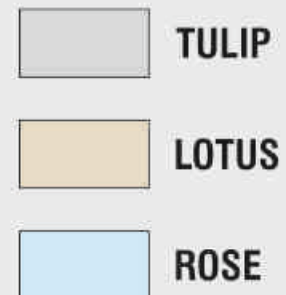
24 X 7 SECURITY



LAYOUT PLAN



2 BHK PROUD LIVING APARTMENT



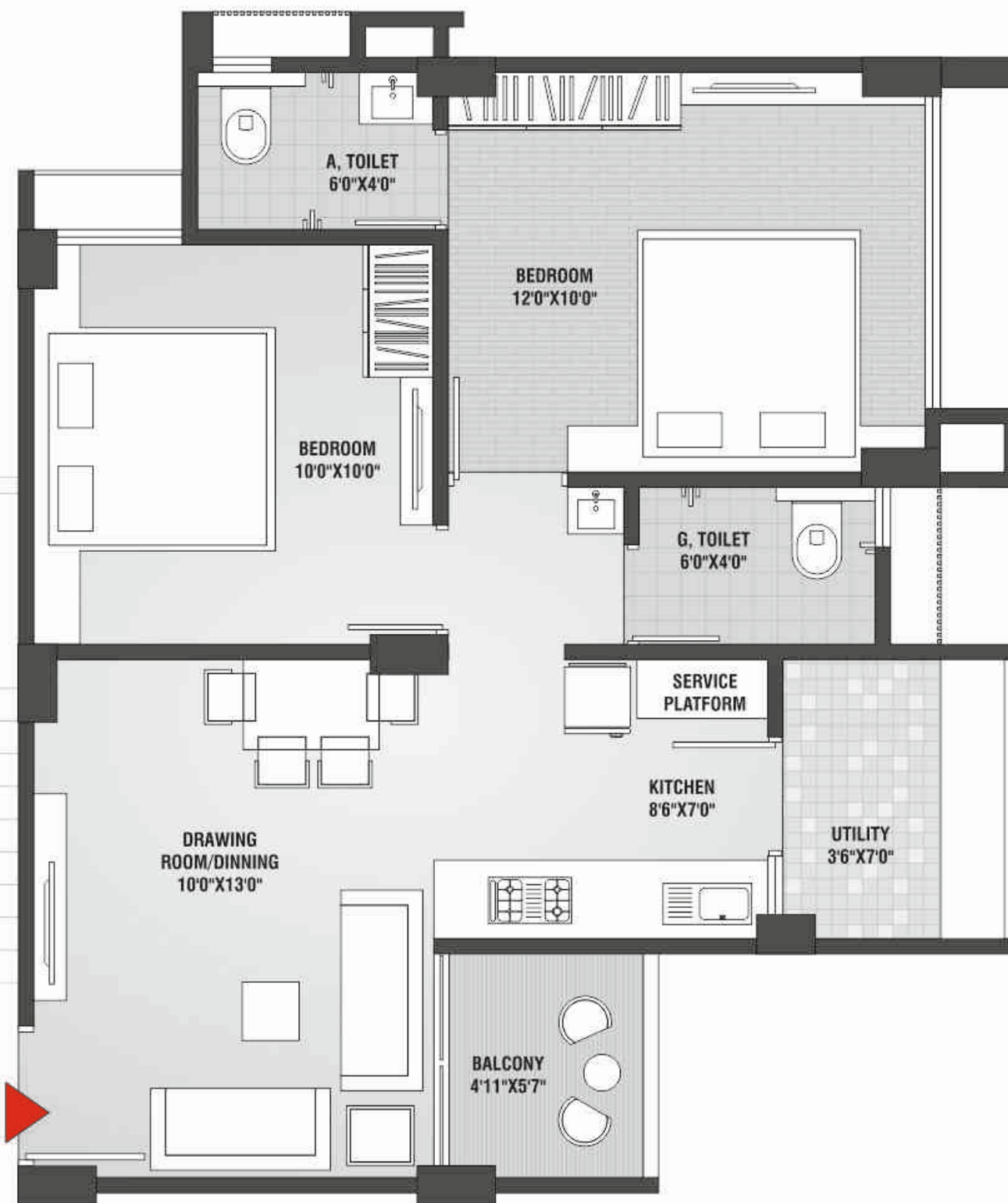
LEGEND

- 01 ENTRANCE GATE
- 02 SECURITY CABIN
- 03 PARKING
- 04 VISITOR PARKING
- 05 GARDEN
- 06 GAZEBO WITH GARDEN
- 07 WATER BODY
- 08 OPEN AIR THEATRE
- 09 TEMPLE
- 10 WALKING TRACK
- 11 CHILDREN PLAY AREA
- 12 SITTING AREA
- 13 CLUB ENTRANCE
- 14 CLUB HOUSE
- 15 COMMERCIAL SPACE



2 BHK UNIT PLAN

TULIP	A, B, C, D, E, F
LOTUS	A, B, C, D, E, F
ROSE	D

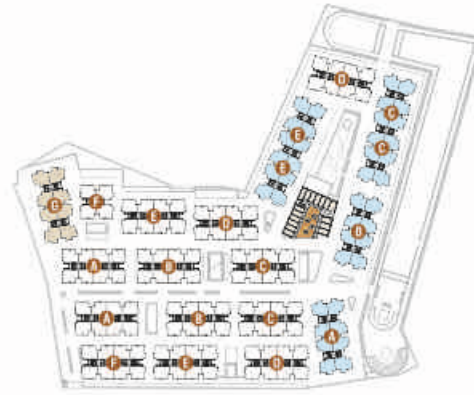


2 BHK SECTION PLAN



2 BHK UNIT PLAN

LOTUS | G
ROSE | A, B, C, E



2 BHK SECTION PLAN

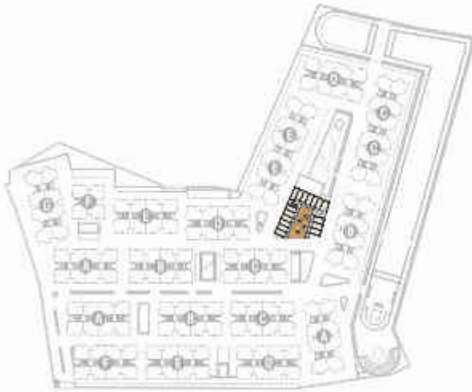






COMMERCIAL PLAN

GROUND & FIRST FLOOR



SPECIFICATIONS

STRUCTURE :		• Earthquake resistant, R.C.C framework structure
FLOORING :		• Premium Vitrified tiles flooring
DOOR :		• Main Door Decorative Door for main entrance with Galvanized frame • Internal Door Flush Door with Galvanized frame
WINDOWS :		• Standard quality powder coating aluminum with 5 mm glass
KITCHEN :		• Standard quality polished granite in platform with large glazed tiles dado upto lintel level & Standard S.S. sink
WASH AREA :		• Floor : Kota or Rustic vitrified tiles
WALL FINISHES :		• Inside : Mala plaster with White putty finish • Outside : Plaster with Texture
ELECTRIFICATION :		• Concealed cooper wiring and modular electrical accessories of standardized brand
TOILET :		• Premium quality tiles up to lintel level • Branded bath ware & plumbing fitting, • Water proofing treatment in toilets
BALCONY & RAILING :		• Rustic tiles • M.S. Railing
LIFT :		• Two elevators in all tower
GENERAL AREAS :		• Vitrified flooring in each foyer and granite stone in the staircase

NOTES : • All Government legal charges, Stamp duty, common maintenance charges, GEB charges, GST etc taxes shall be borne extra by the members.
• In case of irregular payments 18% (annual) interest will be charged. • In case of cancellation of unit 10% of payment received will be deducted as a management services charges and balance amount will be returned only after the resell of the unit. • No external changes shall be allowed. Only internal changes will be allowed with prior permission and shall be charged extra in advance. • Dimensions and area mentioned in the brochure are approximate and indicative. • This brochure is not a part of legal documents. It is only for information and private circulation. • All rights are reserved by the developers to make any changes in the plan, elevation, specification and future additional development in surrounding area in the scheme and shall be binding to all the members. • Subject to Mehsana jurisdiction