

A Project by **Virinchi & Kotari's**



## Virinchi & Kotari's

Head Office: Flat No. 1A, Shangrila Apartment, Stambalagaruvu Road,  
Beside Hanumaiya Company, Maruthi Nagar ,GUNTUR, Andhra Pradesh.

Corporate Office: 52-1/8-11, 2nd Floor, Fortune Heights, 2nd Lane,  
Near Nagamani Hotel, NTR Colony, VIJAYAWADA.

Machlipatnam Office: Flat No. 102, Geya Sri Murali Towers,  
Srinivas Nagar Colony, MACHLIPATNAM.

visit us [www.virinchiresorts.com](http://www.virinchiresorts.com)

email: [virinchiTownships@gmail.com](mailto:virinchiTownships@gmail.com), [kotari.ep@gmail.com](mailto:kotari.ep@gmail.com)



# White Fields

JEWEL OF THE CITY

ULTRA PREMIUM VILLAS

Design @ 9246416067





**Virinchi & Kotari** is a premier real estate company dedicated to redefining luxury living with our exclusive premium villas and meticulously curated open plots. We specialized in crafting exquisite spaces where elegance meets functionality, providing our clients with the perfect blend of comfort, style & sophistication.

Our premium villas are thoughtfully designed to offer unparalleled luxury, privacy and modern amenities, ensuring an elevated living experience. For those seeking to build their dream homes, our open plots are strategically located in prime areas, offering unmatched potential and value.

With a commitment to excellence, attention to detail and a passion for creating extraordinary lifestyles, **Virinchi & Kotari** stands as a trusted partner in transforming your vision into reality. Whether it's a luxurious villa or a bespoke plot, we help you invest in a future that's as secure as it is beautiful.



A Project by **Virinchi & Kotari's**



*White Fields*

JEWEL OF THE CITY

Welcome to **VIRINCHI & KOTARI** WHITE FIELDS

Discover a sanctuary where elegance meets tranquility. Our exclusive villas are thoughtfully designed to offer a harmonious blend of luxury, comfort, and breathtaking surroundings. Whether you're seeking a serene escape, a family retreat, or a base for relaxation our villas provide the perfect haven.

Each villa boasts spacious interiors, premium amenities, and unparalleled attention to detail, ensuring your stay is nothing short of extraordinary. With private pools, lush gardens, and stunning views, you'll experience the ultimate in relaxation and privacy.

Indulge in personalized service, immerse yourself in local culture, and create lasting memories at our one-of-a-kind villas.

WELCOME TO YOUR DREAM GATEWAY.





GAME CHANGER



*White Fields*

ULTRA PREMIUM VILLAS

FOR **GRANDEUR**  
**LIFE STYLE**





# CLUB HOUSE

- Grand Reception
- Banquet Hall
- Spa
- Table Tennis, Snooker
- Carom, Chess
- Gymnasium
- Zumba & Aerobics
- Library
- Terrace Party Deck
- Guest Room
- Office Room

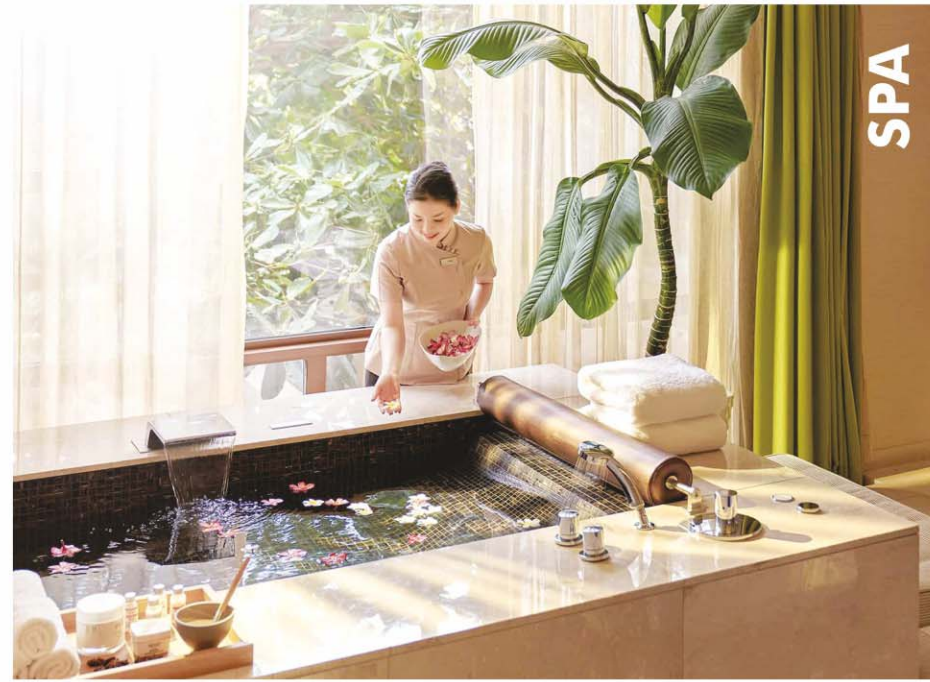
\* Conditions Apply



SNOOKER



GYMNASIUM



SPA



TABLE TENNIS



BANQUET HALL



VIRINCHI & KOTARI CLUB HOUSE

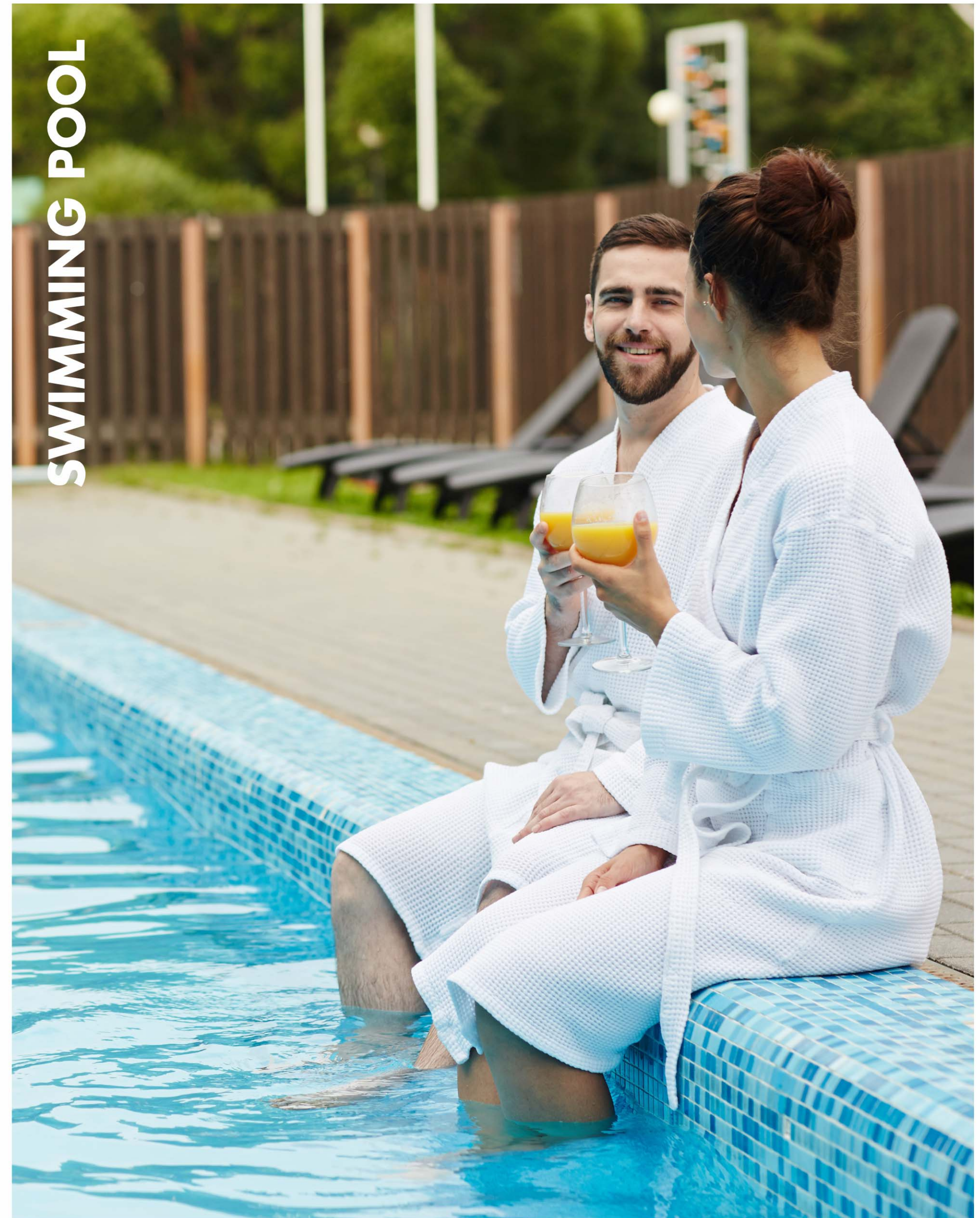
Ultra Premium Villas With  
**TRULY WORLD CLASS**



# SWIMMING POOL

- Swimming Pool
- Baby Pool
- Juice Bar
- Cafeteria

\* Conditions Apply



Harmony of  
**POSH LIFESTYLE**



**ELEGANTLY DESIGNED**  
WHERE EVERY DETAIL MATTERS



*White Fields*

PRIVATE POOL  
PERSONAL OFFICE ROOM  
VISITORS LOUNGE  
HOME THEATER  
POOJA ROOM  
DRY & WET KITCHEN  
TERRACE GARDEN  
STORE ROOM  
BBQ ZONE  
2 SERVANT ROOMS  
PERSONAL GYM AREA  
LIFT & SPECIOUS BALCONIES

**SPECIAL FEATURES**

**PLATINUM VILLA**

300 SQ. YARD - EAST FACING





Ground Floor



1<sup>st</sup> Floor



2<sup>nd</sup> Floor



3<sup>rd</sup> Floor



300 SQ. YDS. - EAST FACING	
SLAB AREA	6402 Sq. Ft.
PARGOLA AREA	236 Sq. Ft.
TERRACE GARDEN	1049 Sq. Ft.

LIVE LIKE  
A KING





**ELEGANTLY DESIGNED**  
WHERE EVERY DETAIL MATTERS



*White Fields*

PRIVATE POOL  
PERSONAL OFFICE ROOM  
VISITORS LOUNGE  
HOME THEATER  
POOJA ROOM  
DRY & WET KITCHEN  
TERRACE GARDEN  
STORE ROOM  
BBQ ZONE  
2 SERVANT ROOMS  
PERSONAL GYM AREA  
LIFT & SPECIOUS BALCONIES

**SPECIAL FEATURES**

**PLATINUM VILLA**

300 SQ. YARD - WEST FACING





Ground Floor



1<sup>st</sup> Floor



2<sup>nd</sup> Floor



3<sup>rd</sup> Floor



300 SQ. YDS. - WEST FACING	
SLAB AREA	6402 Sq. Ft.
PARGOLA AREA	236 Sq. Ft.
TERRACE GARDEN	1062 Sq. Ft.

LIVE LIKE  
A KING





MESMERIZING EVENINGS





# RECREATION SPACES

- Tennis Court
- Shuttle Court
- Outdoor Gym
- Walking Track
- Yoga & Meditation
- Kids Play Area
- Hangout Decks
- Walkways with Pargolas
- Fountains
- Sitting Zones



YOGA







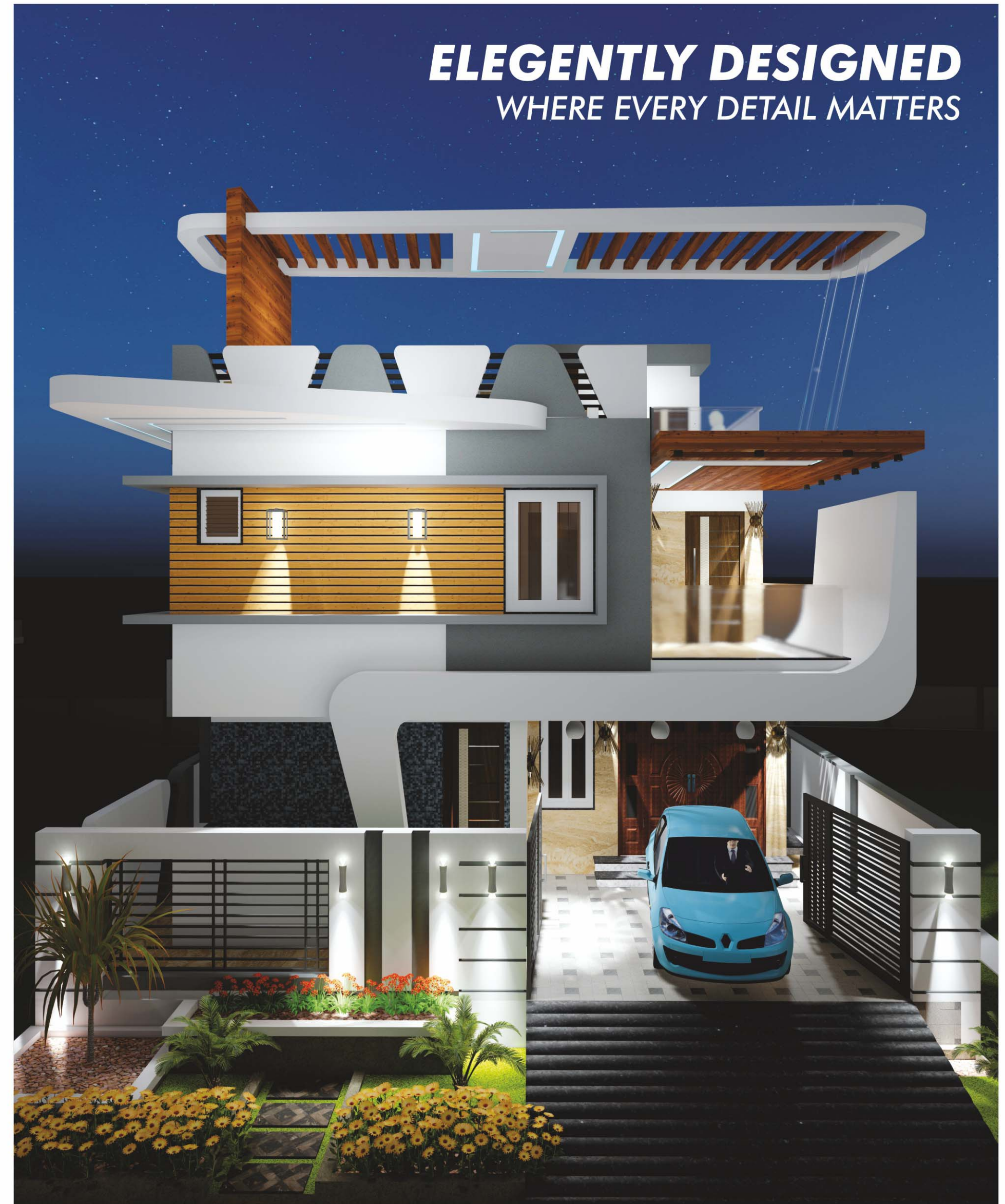
Ground Floor



1<sup>st</sup> Floor



2<sup>nd</sup> Floor



**ELEGENTLY DESIGNED**  
WHERE EVERY DETAIL MATTERS



240 SQ. YDS. - EAST FACING	
SLAB AREA	3306 Sq. Ft.
PARGOLA AREA	236 Sq. Ft.
TERRACE GARDEN	1039 Sq. Ft.

HOME THEATER  
POOJA ROOM  
SPECIOUS BALCONIES  
TERRACE GARDEN  
BBQ ZONE  
LIFT  
**SPECIAL FEATURES**

# DIAMOND VILLA

240 SQ. YARD - EAST FACING





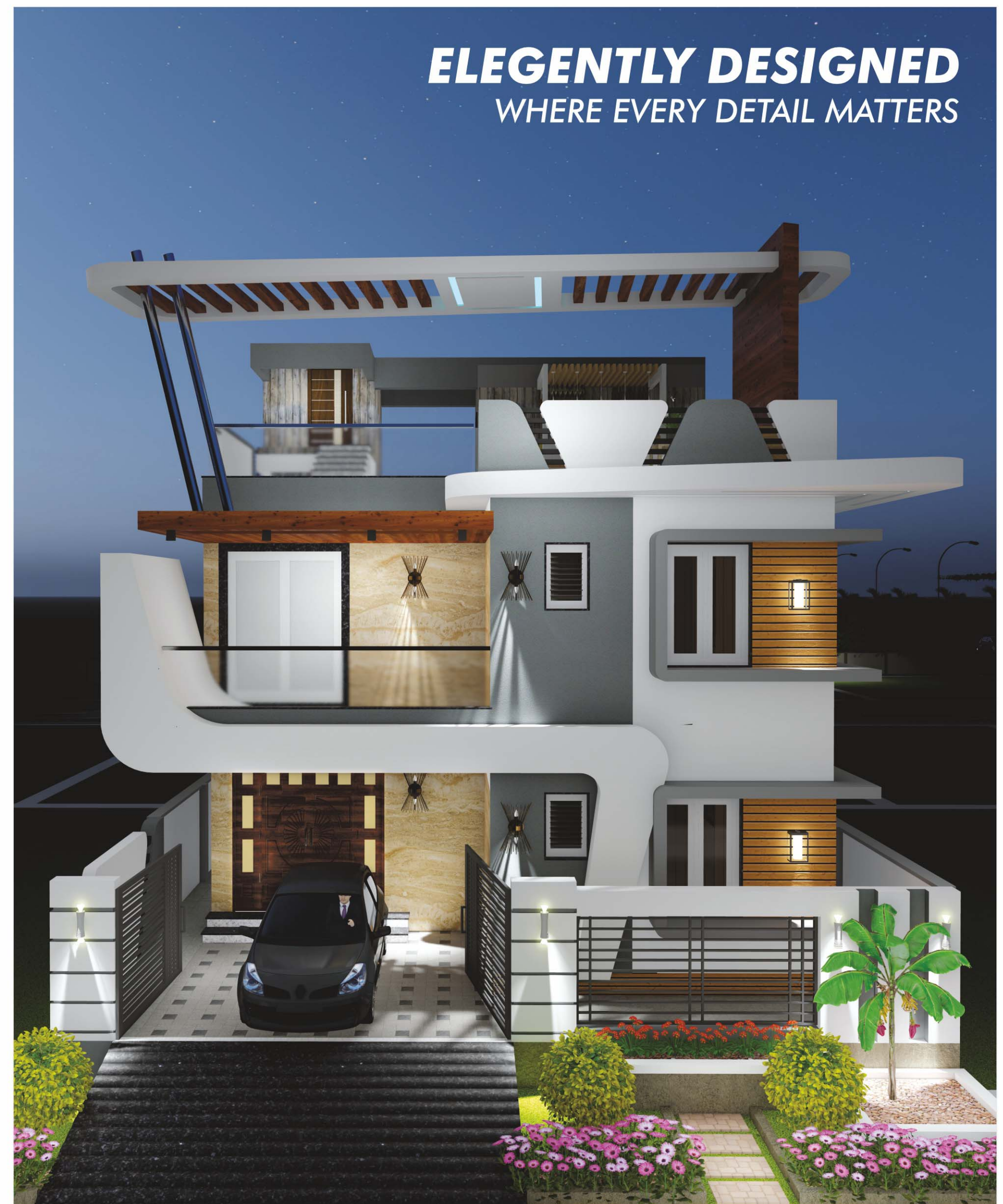
Ground Floor



1<sup>st</sup> Floor



2<sup>nd</sup> Floor



ELEGANTLY DESIGNED  
WHERE EVERY DETAIL MATTERS

240 SQ. YDS. - WEST FACING	
SLAB AREA	3264 Sq. Ft.
PARGOLA AREA	236 Sq. Ft.
TERRACE GARDEN	1084 Sq. Ft.

HOME THEATER  
POOJA ROOM  
SPECIOUS BALCONIES  
TERRACE GARDEN  
BBQ ZONE  
LIFT  
**SPECIAL FEATURES**

# DIAMOND VILLA

240 SQ. YARD - WEST FACING





# JOY OF LIVING

Living Architecture with the breath of life and soul. Our architects give a lot of thought before designing the villas, giving them the innovative touch that speaks of the loving care we infuse in every little detail of the project. We supervise the project and ensure that the project takes shape as designed and executed meticulously by experienced engineers. **WHITE FIELDS** take pride in delivering homes that are a notch above the rest.



## White Fields

JEWEL OF THE CITY





# White Fields

JEWEL OF THE CITY

PHASE - 1

ULTRA PREMIUM VILLAS





Ground Floor



1<sup>st</sup> Floor



2<sup>nd</sup> Floor



**ELEGENTLY DESIGNED**  
WHERE EVERY DETAIL MATTERS

183 SQ. YDS. - EAST FACING	
SLAB AREA	2380 Sq. Ft.
PARGOLA AREA	212 Sq. Ft.
TERRACE GARDEN	710 Sq. Ft.

HOME THEATER  
POOJA ROOM  
SPECIOUS BALCONIES  
TERRACE GARDEN  
BBQ ZONE  
LIFT  
**SPECIAL FEATURES**

**GOLD VILLA**  
183 SQ. YARD - EAST FACING





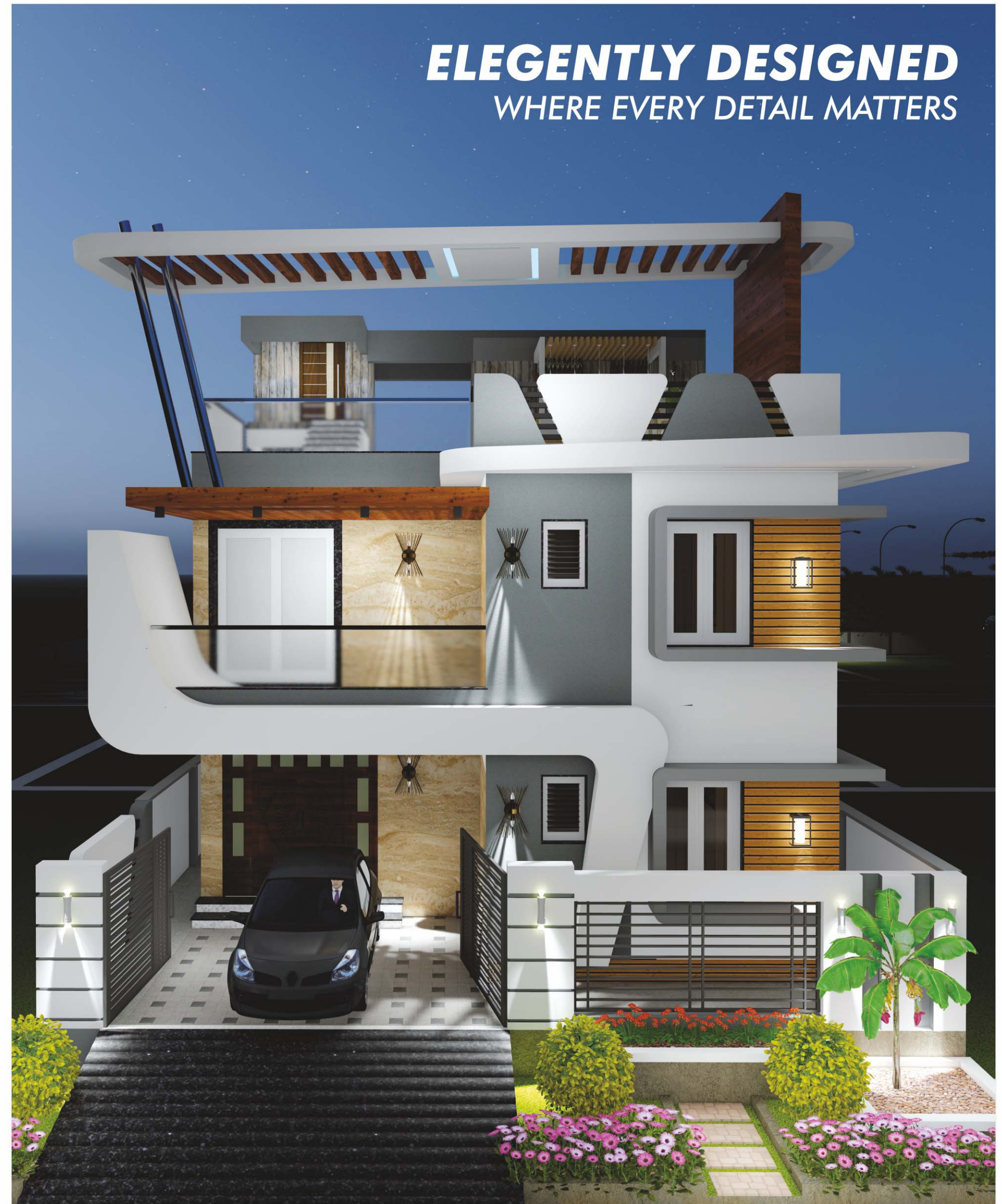
Ground Floor



1<sup>st</sup> Floor



2<sup>nd</sup> Floor



**ELEGANTLY DESIGNED**  
WHERE EVERY DETAIL MATTERS

<b>183 SQ. YDS. - WEST FACING</b>	
SLAB AREA	2340 Sq. Ft.
PARGOLA AREA	212 Sq. Ft.
TERRACE GARDEN	750 Sq. Ft.

HOME THEATER  
POOJA ROOM  
SPECIOUS BALCONIES  
TERRACE GARDEN  
BBQ ZONE  
LIFT  
**SPECIAL FEATURES**

**GOLD VILLA**  
183 SQ. YARD - WEST FACING





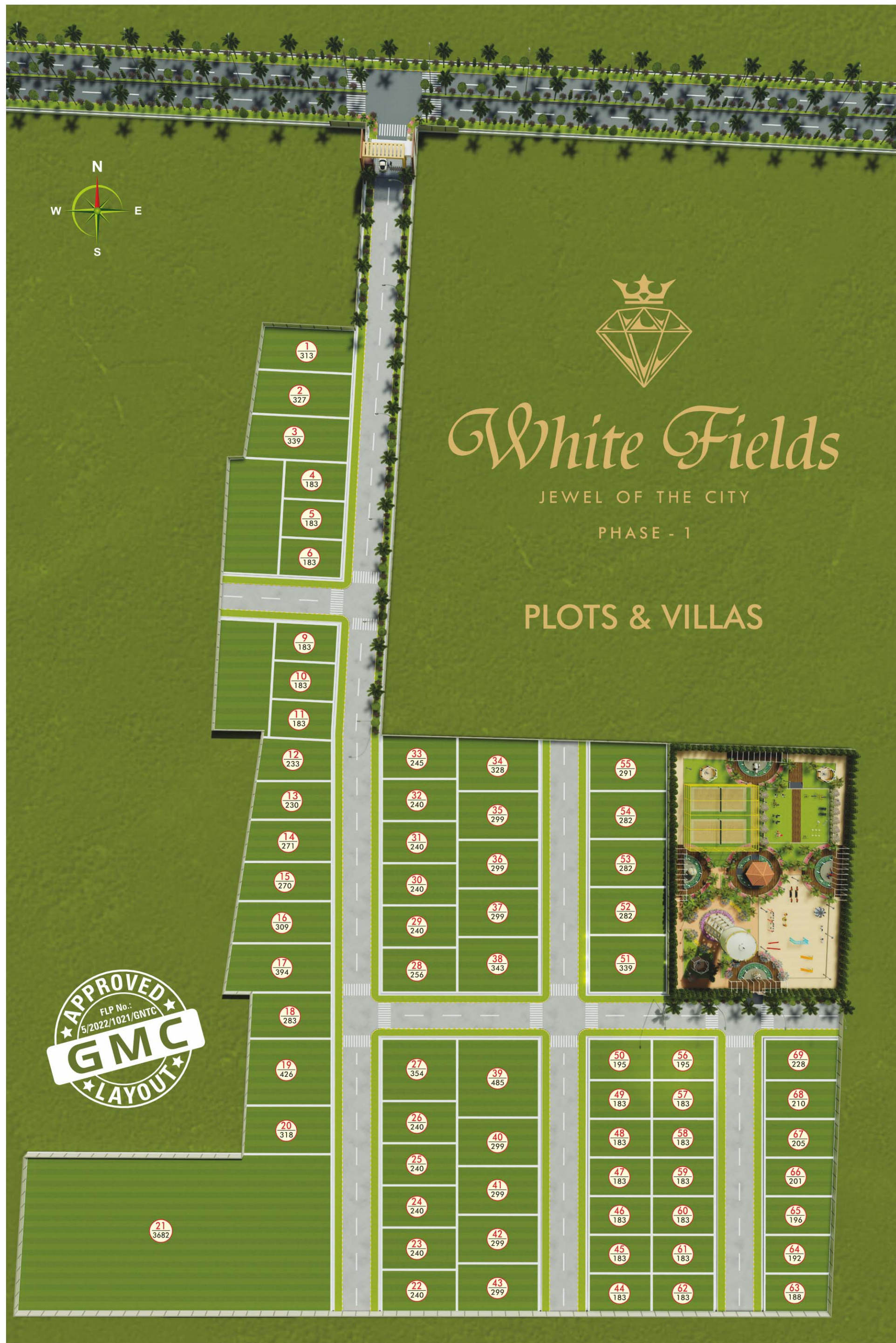
**LEGACY  
FOR GENERATIONS**



*White Fields*

JEWEL OF THE CITY





# PROJECT HIGHLIGHTS

## Club House

- \* Grand Reception
- \* Banquet Hall
- \* Spa
- \* Table Tennis, Snooker
- \* Carrom, Chess
- \* Gymnasium
- \* Zumba & Aerobics
- \* Library
- \* Terrace Party Deck
- \* Office Room
- \* Guest Rooms

## Swimming Pool

- \* Swimming Pool
- \* Baby Pool
- \* Juice Bar
- \* Cafeteria

## Recreational Spaces

- \* Outdoor Gym
- \* Walking Track
- \* Yoga & Meditation
- \* Kids Play Area
- \* Hangout Decks
- \* Walkways with Pargolas
- \* Fountains
- \* Sitting Zones

## Beautiful Landscape

- 24/7 Security
- 24/7 Surveillance
- Water Tank
- Intercom
- Round the clock Maintenance
- 9' Compund Wall with 3' Solar Fencing
- EV Charging Point

## Future Attractions in Upcoming Phases

- \* Giant Chess Court
- \* Box Cricket & Volleyball
- \* Indoor Shuttle Court
- & Many More Attractions



## Specifications

### FLOORING

Italian marble tile in living and dining area Premium quality vitrified tile / granite flooring in all other rooms  
Kota stone / exterior tile flooring in utility area China mosaic on terrace Water proofing treatment in terrace & toilets

### KITCHEN

Stone Platform with premium quality granite top Premium quality glazed tile cladding up to lintel level

### WALL FINISH

External double coat sand faced plaster with standard quality acrylic paint  
Internal walls with mala plaster and white cement putty

### CONSTRUCTION

Earthquake resistant RCC frame structure

### ELECTRIFICATION

Three phase concealed electrical copper wiring with ample electric points  
Electrical modular accessories and MCB of reputed brand like schneider electric or equivalent.

### DOORS & WINDOWS

Teak wooden door for main entrance  
All internal doors will be superior quality wooden flush doors with emulsion paint.

### WET ZONES

Concealed plumbing of standard quality fittings and pipes  
Grohe / Kohler / Toto or equivalent bath wares & sanitary ware fittings in bathrooms  
Provision for solar hot water points in all the toilets  
24 x 7 water supply with common pressure booster pump to overhead water tank in each villa  
Premium quality glazed tiles up to lintel level in bathrooms

Note: Details of specification and common infrastructure mentioned here is a guideline. Developer shall finalize exact details in consultation with architect of the project, which will be binding to the purchaser herein and all other purchasers.

### WORLD CLASS AFFILIATION :



**Disclaimer:** \* Stamp Duty, Registration charges, Legal Documentation charges, Advance Maintenance, Fix Maintenance charges, AMC charges, GMC charges and Electrical Charges including cable and sub-station cost shall be borne by the purchaser. \* Service Tax, VAT, any additional charges, taxes, cess or duties levied by the government/local authorities prior, during or after the completion of the scheme shall be borne by the purchaser. \* In the interest of the continual development in design and quality of construction, the developer reserves all rights to make any changes in the scheme, including technical specifications, design, planning and layout at any stage. All the purchasers shall abide by such charges. \* Changes/Alteration of any nature, including the elevation, exterior color scheme or any other change affecting the overall design concept and outlook of the scheme by any purchasers are strictly not permitted during or after the completion of the scheme. \* Furniture, fixtures are only for presentation and will not be provided \* The brochure is intended only to convey the essential design and technical features of the scheme and shall not be construed to form part of the legal document. Agreement for sale shall be final and binding to the purchaser.

# White Fields



1.4 KM from Chebrolu Hanumaiah Company

1.6 KM from Gujjana Gudla Circle.

Bank Loans Available

Credits

Developer :

**Virinchi & Kotari's Infra**  
Flat No. 1A, Shangrila Apartment, Stambalagaruvu Road,  
Beside Hanumaiya Company, Maruthi Nagar,  
GUNTUR, Andhra Pradesh - 522006.

Architects :

**SRIMAYI**  
ARK STUDIO  
Annapurna Nagar, Gorantla, Near Inner Ring Road, Guntur.  
www.srimayiarkstudio.com  
email: info@srimayiarkstudio.com

Scan for Location

