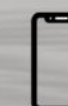


ARCHITECTURE

PORTFOLIO

THIS PORTFOLIO PRESENTS A COLLECTION OF
WORKS IN THE FIELDS OF ARCHITECTURE AND
INTERIOR DESIGN.

CONTACT US



01066111008



WWW.ERSAA.NET



INFO@ERSAA.NET

E X T E R I O R



C L A S S I C



This classic-looking house is designed to fit seamlessly on a 600 sqm lot in Garowe, offering a perfect blend of elegance and functionality.



COURTYARD

A modern villa that combines sleek architectural design with practical living.

The clean lines, large windows, and natural textures create a spacious and light-filled atmosphere. Ideal for those who appreciate contemporary style and luxury in every detail.



M O D E R N



This design depicts a restaurant that serves a hospital located in Mogadishu.

The restaurant contains 100 tables and the facade is designed to manifest the different functions such as the canteen and the main hall VIP hall and the roof that overlooks the stunning view of the Indian ocean.

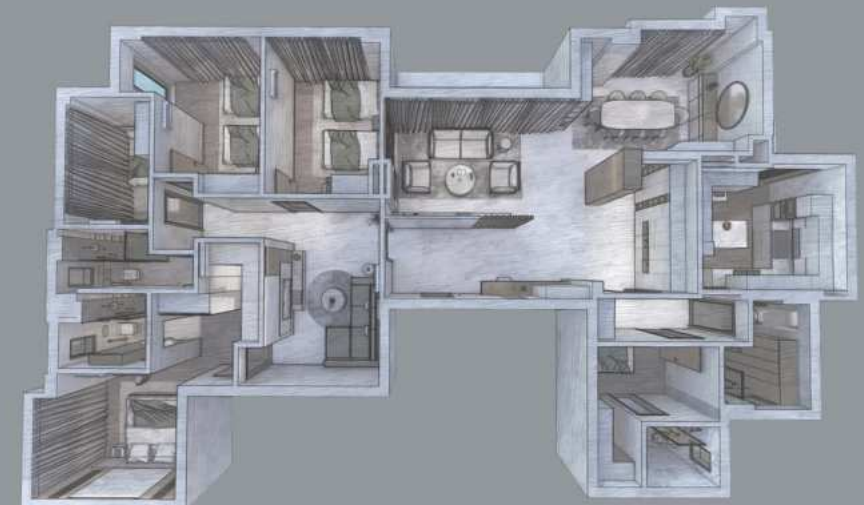


SCHEME

These presentations showcase schematic designs that are in the pre-development phase.



These floor plans have been thoughtfully rendered to provide a clear and detailed representation of the various spaces. They serve to enhance understanding of the layout and circulation throughout the areas, facilitating a comprehensive view of the design.



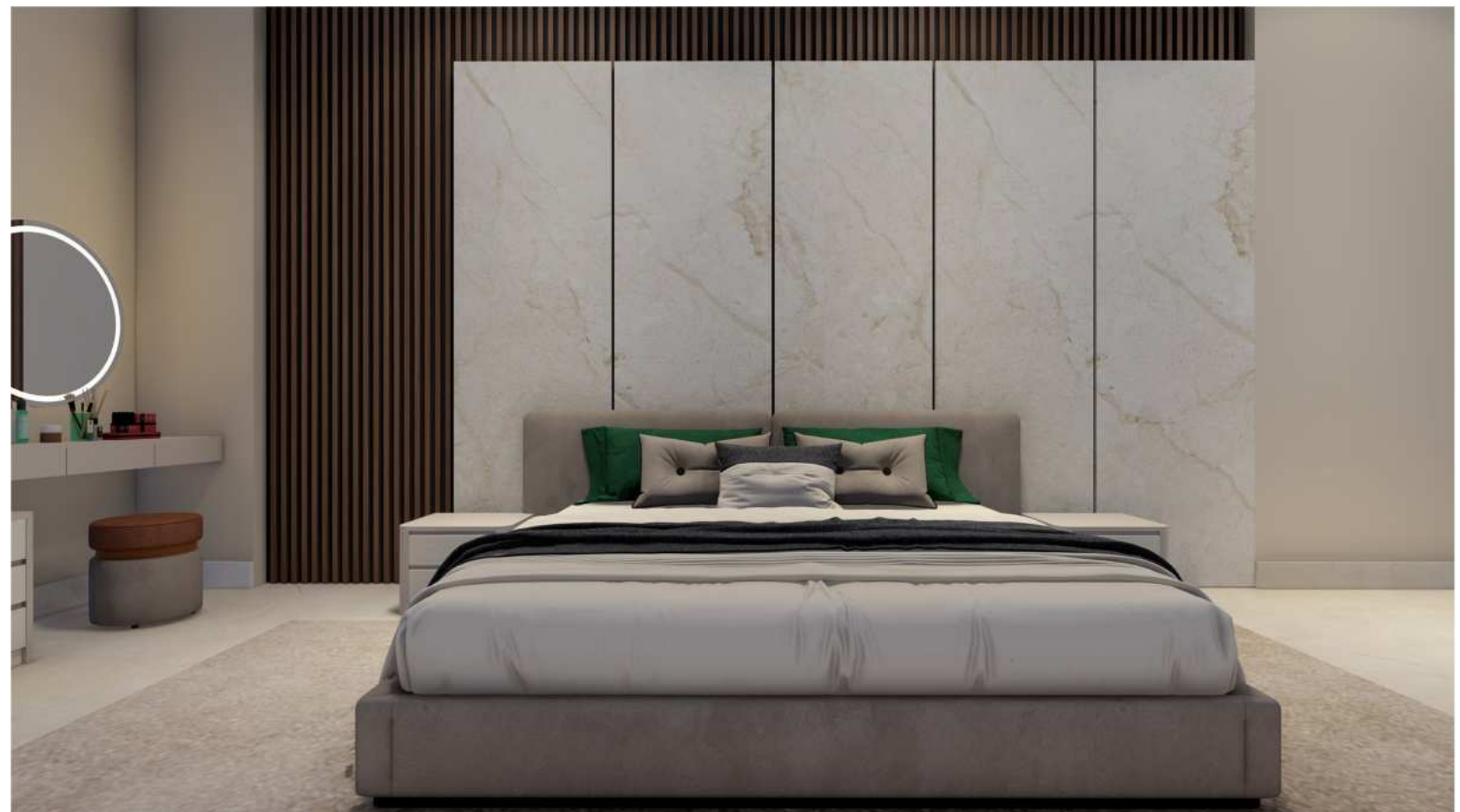
I N T E R I O R



These bedrooms are style characterized by a refined balance between minimalism and quiet luxury.

It emphasizes clean architectural lines, soft neutral color palettes, and the use of rich but restrained materials like stone, wood, and plush upholstery.

The aesthetic is grounded in simplicity, yet elevated through the careful layering of textures and subtle contrasts.



REFINED



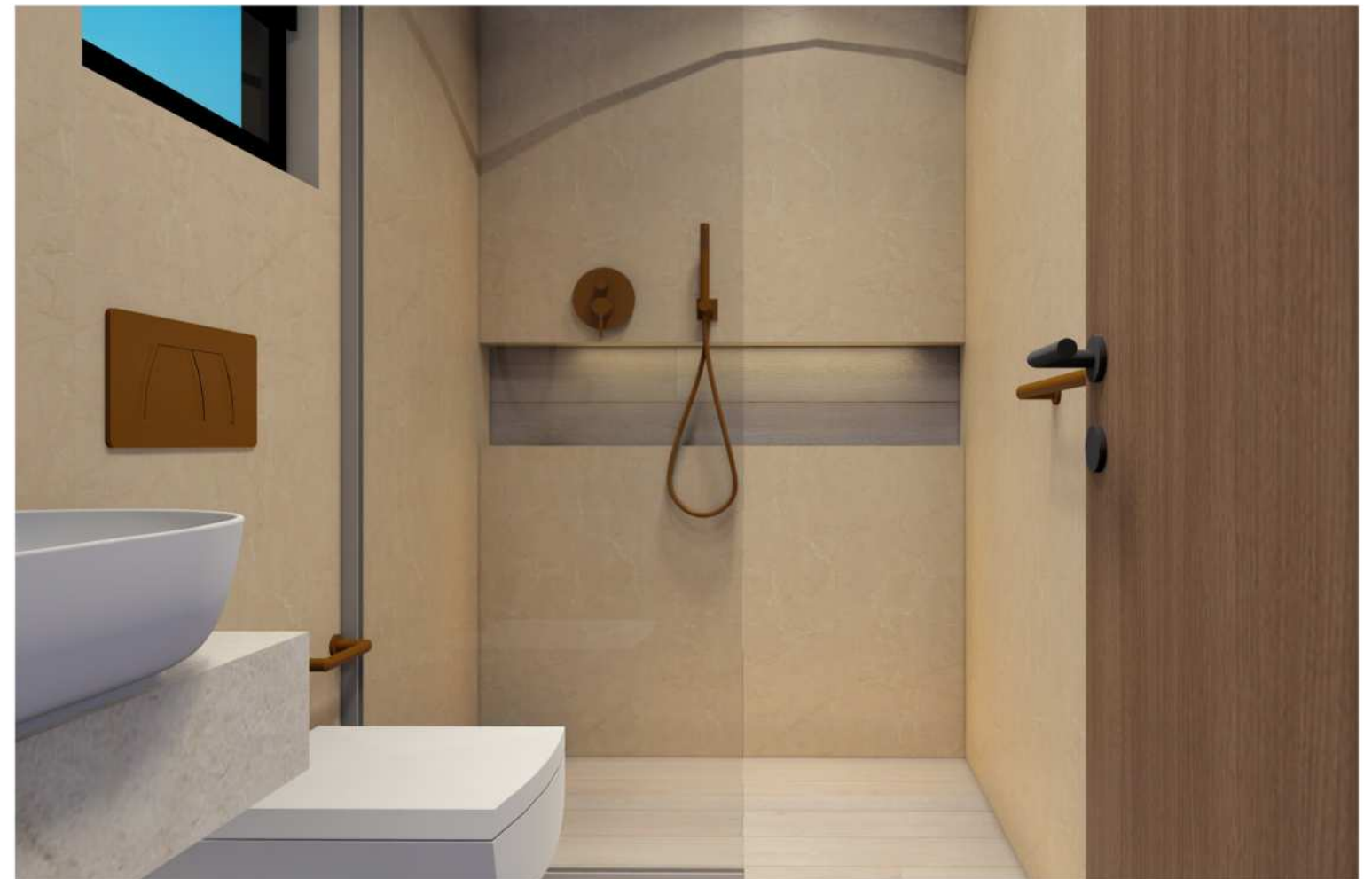
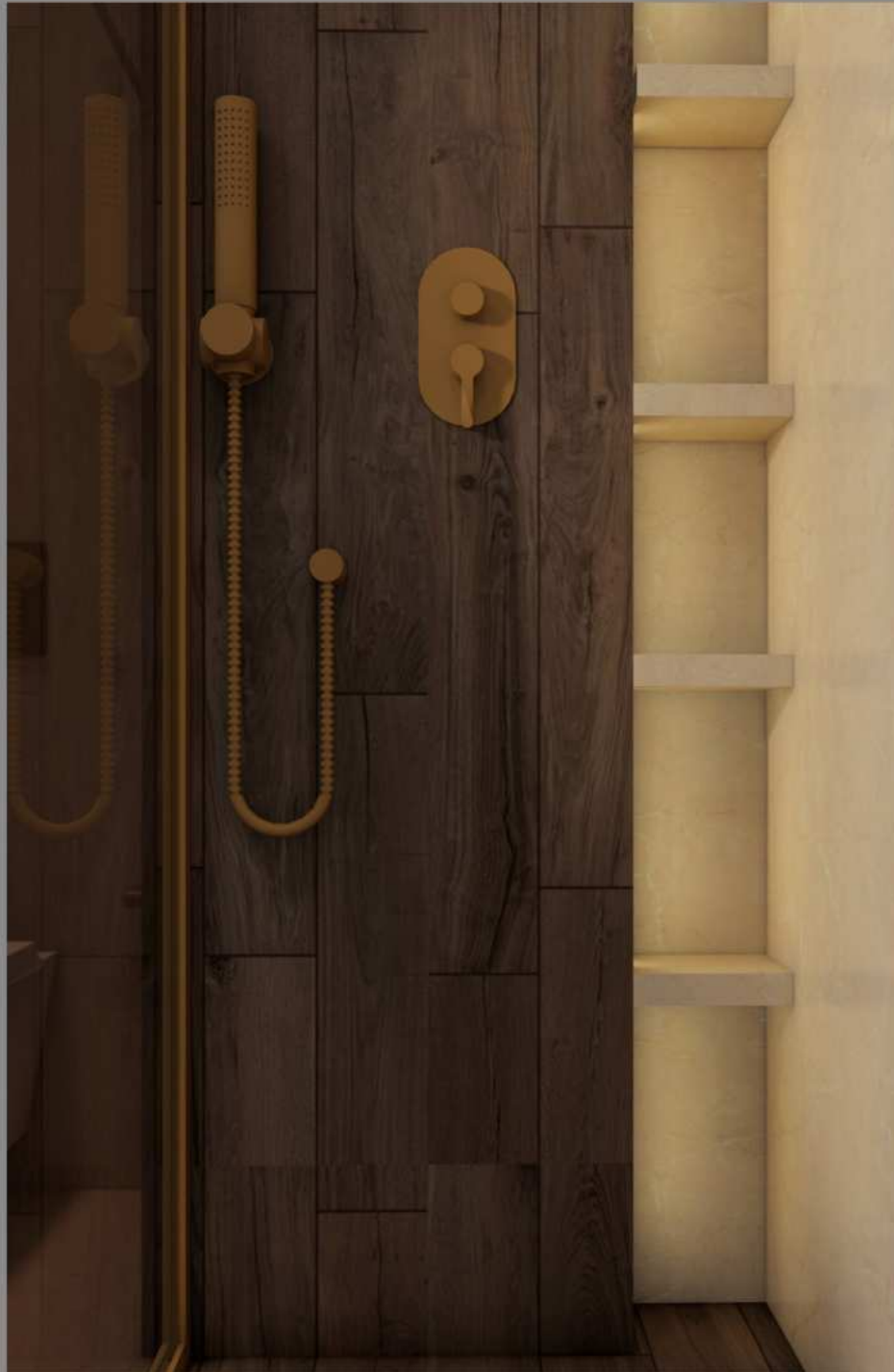
Contemporary sanitary design combines aesthetics and functionality.

This approach ensures that sanitary fixtures are visually appealing while also serving practical needs.

By integrating beauty with utility, this helps create inviting and efficient spaces that enhance user experience.

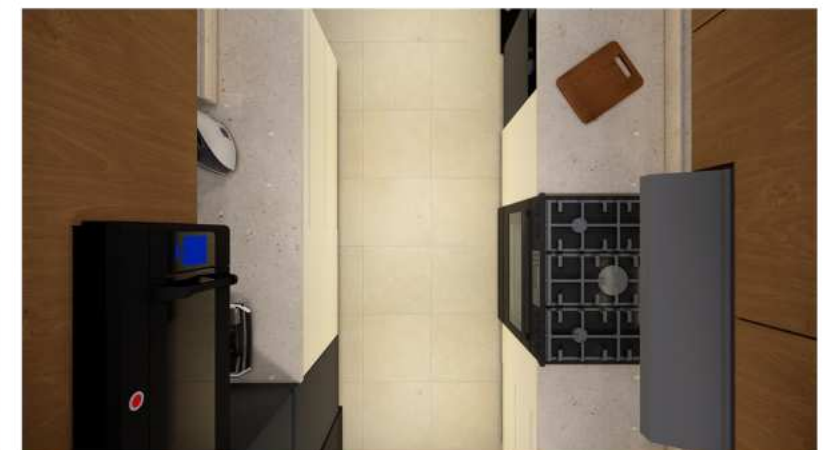
These designs showcases a modern and minimalist approach to a compact bathroom layout, harmonizing functionality with aesthetic sophistication.

The spaces are defined by clean lines, warm tones, and efficient use of materials.



This interior design style embraces a contemporary minimalist approach, defined by clean lines, integrated storage solutions, and a muted, cohesive color scheme.

The dining and kitchen spaces showcase a refined balance of form and function, with an emphasis on natural materials such as wood and stone to bring warmth and texture into the space.



SALON



The living room is intended to be a refined corner of comfort, where modern design meets softness. Clean lines, carefully curated décor, and warm hues come together to create a peaceful sanctuary. It should be more than just a room; it serves as a pause from the noise of everyday life.



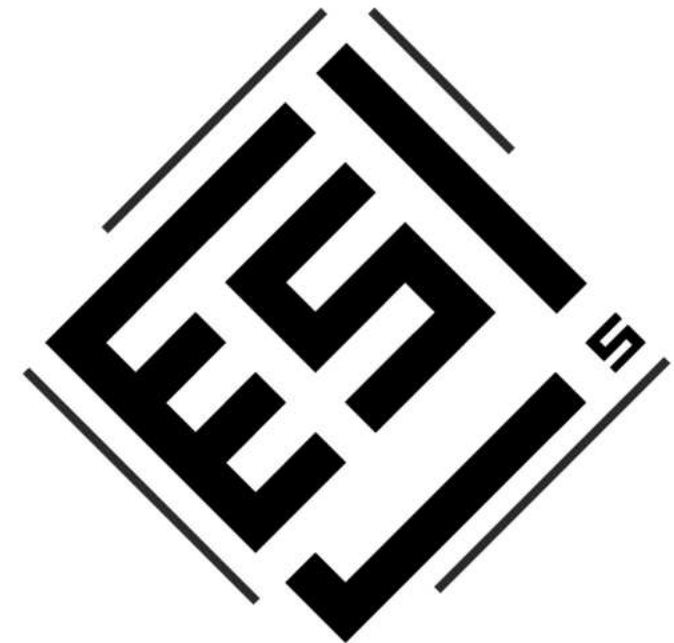
A seamless blend of form and function

this living space embraces muted tones and natural textures. It invites calm through balance – linear wood slats, soft upholstery, and intentional negative space.

Nothing is loud, yet everything speaks.



ERSAA ARCHITECTS



CONTACT US



0106611108



WWW.ERSAA.NET



INFO@ERSAA.NET