

Epoxy Resin Art

30 Projects

Stephany Burk

Copyright © 2025 by Stephany Burk

All rights reserved. No part of this book may be reproduced or transmitted in any form or by any means, electronic or mechanical, including photocopying, recording, or by any information storage and retrieval system, without permission in writing from the author.

Table of Contents

Chapter 1 Light Depth & Motion	5
Galaxy Glow Tray	5
Aurora Borealis Wall Panel	7
Resin River Lamp Base	9
Fire & Ice Coaster Set	11
Ocean Depth Shadow Box.....	13
Chapter 2 Functional Art	15
Geode Resin Mirror Frame	15
Resin-Covered Cheese Board with Gold Veins.....	17
Serving Tray with Resin Handles.....	19
Resin Coaster Holder Set	21
Resin Key Holder Board	23
Chapter 3 Nature & organic Forms.....	25
Pressed Fern Wall Hanging.....	25
Driftwood & Resin Candle Holder	27
Terrarium Coasters with Mini Botanicals	29
Dried Citrus & Gold Wall Clock.....	31
Pinecone Jewelry Box Lid.....	33
Chapter 4 Color Mastery	35
Marbled Jewelry Set	35
Opal Effect Pendants	37
Tropical Wave Resin Comb.....	39
Holographic Phone Case Inserts	41
Resin Bookmark with Floating Ink Blooms	43
Chapter 5 Advanced Pouring & Compositions.....	45
Split-Pour Wall Art	45
Metal Leaf River Board	47

Layered Landscape Scene.....	49
Resin Geometric Tray	51
Floating Object Display Block.....	53
Chapter 6 Statement Pieces & Illumination	55
Epoxy Resin Night Light Cube	55
Holographic Wall Disk	57
Galaxy-Inspired Jewelry Holder	59
Epoxy & Glass Fusion Vase Base	61
Custom Resin Tabletop Insert.....	63

CHAPTER 1 LIGHT DEPTH & MOTION

GALAXY GLOW TRAY



This project is all about capturing the mesmerizing beauty of a starry night sky in resin. The Galaxy Glow Tray combines shimmering pigments, glow powder, and transparent layers to create a celestial effect that comes alive under light. It is an elegant yet practical piece that you can use for candles, jewelry, or decoration. The subtle depth created by layering makes it appear as if tiny galaxies are suspended in motion beneath the surface.

WHAT YOU'LL NEED:

- Epoxy resin and hardener
- Measuring cups and mixing sticks

- Silicone tray mold (rectangular or circular)
- Black and deep blue mica powders
- Fine silver and gold glitter
- Glow-in-the-dark powder (white or blue)
- Small disposable cups for tinting
- Heat gun or torch
- Nitrile gloves and protective mask
- **Optional:** Gold flakes, glitter, white ink, or a colored resin base

STEP-BY-STEP INSTRUCTIONS

1. **Prepare and Protect Your Workspace**

Start by covering your table with plastic or parchment paper to prevent spills. Wear gloves and a mask to protect yourself from fumes. Make sure the mold is clean and dry. Place it on a level surface to ensure even curing.

2. **Mix and Divide the Resin**

Measure and mix your epoxy resin according to the manufacturer's instructions. Stir slowly for about three minutes to minimize bubbles. Divide the resin into four small cups. Tint one with black mica, one with blue, one with glow powder, and leave one clear. Add a pinch of glitter to each for sparkle.

3. **Create the Galaxy Base Layer**

Pour the black-tinted resin first, covering most of the mold's bottom. Add random swirls of blue and glow resin over the black. Use a stick to lightly swirl the colors together. Avoid overmixing so the pattern remains distinct. A few slow swirling motions will give the illusion of nebula clouds drifting through space.

4. **Add Depth and Light Effects**

Once the first layer begins to thicken slightly, pour a thin layer of clear resin on top. This creates a sense of depth. Sprinkle small amounts of fine glitter to mimic distant stars. You can also drop a few dots of glow resin on this layer for galaxies that

appear to shine when the lights go off.

5. **Remove Bubbles and Let It Cure**

Use a heat gun briefly to eliminate surface bubbles. Keep the heat moving to avoid scorching. Cover the mold with a box or lid to protect it from dust. Let it cure undisturbed for 24 hours in a room between 70–75°F.

6. **Demold and Finish**

After curing, gently remove the tray from the mold. If the edges are uneven, sand them lightly with fine-grit sandpaper. You can polish the surface with a soft cloth to restore shine.

Pro Tip For a dramatic night effect, charge the tray under a bright lamp before turning off the lights. The embedded glow resin will illuminate your design, revealing hidden patterns that resemble real constellations.

CREATIVE VARIATIONS

Try adding tiny metallic flakes or holographic stars in the second layer for a deeper cosmic effect. This project adapts beautifully to coasters or small wall panels using the same technique.

TROUBLESHOOTING

If your colors blend too much, you may have overmixed. Work slowly and in thin layers. To fix dull areas, apply a thin coat of clear resin and let it cure again.

AURORA BOREALIS WALL PANEL



This project captures the dazzling beauty of the Northern Lights through resin art. The Aurora Borealis Wall Panel uses shimmering pigment powders, translucent layers, and metallic accents to recreate the movement and light found in the night sky. The flowing bands of color appear to dance across the surface, shifting as the light changes throughout the day. This piece is perfect for adding a sense of wonder and calm to any space and makes an eye-catching statement when hung under soft lighting.

WHAT YOU'LL NEED:

- Epoxy resin and hardener
- Measuring cups and mixing sticks
- Silicone or wood panel mold (rectangular)

- Deep blue, emerald green, and violet mica powders
- Iridescent pigment or chameleon powder
- Fine gold and silver glitter
- Clear alcohol ink (optional)
- Heat gun or torch
- Protective gloves, mask, and apron
- Painter's tape and level surface

STEP-BY-STEP INSTRUCTIONS

1. Prepare Your Workspace

Cover your work surface with plastic or parchment paper. Put on gloves and a mask to protect yourself from fumes. If you are using a wood panel mold, seal it first with clear tape or a thin coat of resin to prevent leaks.

Make sure the surface is level, as uneven curing can distort the light flow.

2. **Mix and Tint the Resin**

Measure and mix your resin according to the instructions. Stir slowly for at least three minutes to reduce bubbles. Divide the mixture into four cups. Tint one with deep blue mica, one with green, one with violet, and leave one clear. Add a pinch of glitter to each colored batch and mix until smooth.

3. **Pour the Base Layer**

Pour the deep blue resin first to create the night sky base. Tilt the mold slightly to let the color spread naturally. Then pour ribbons of violet and green resin across the blue, overlapping slightly. The colors will begin to blend softly, forming the signature flowing motion of an aurora. Avoid overmixing to maintain color separation.

4. **Add Luminosity and Depth**

Pour a thin layer of clear resin over the colored base. Sprinkle a small amount of iridescent pigment or fine glitter across this layer. Use a stick or heat gun to move the colors gently, creating waves that seem to shimmer. The transparent layer enhances the illusion of light drifting within the panel.

5. **Remove Bubbles and Cure**

Briefly run a heat gun across the surface to remove bubbles. Keep the tool in motion to avoid scorching the resin. Cover the project with a dust-free box and let it cure for at least 24 hours in a warm, stable environment.

6. **Demold and Finish**

Once cured, carefully remove the panel from the mold. Sand any sharp edges with fine-grit sandpaper. If desired, add a glossy topcoat of clear resin for extra depth. Attach wall-mounting hardware to the back and display it where light can catch its color shifts.

Pro Tip: Use an angled light source to enhance the shimmering layers. The metallic pigments reflect differently depending on the viewing angle, creating a true aurora effect.

CREATIVE VARIATIONS

Add white alcohol ink dots while the resin is still fluid to mimic faint stars. You can also embed thin streaks of silver foil to imitate falling light. Each version will capture a unique movement inspired by nature's most beautiful sky.

TROUBLESHOOTING

If your resin appears cloudy, the workspace may have been too cold. Keep the temperature between 70–75°F for a clear cure. To fix a dull area, apply a fresh thin coat of clear resin

RESIN RIVER LAMP BASE



This project combines the natural warmth of wood with the fluid elegance of resin. The Resin River Lamp Base captures the illusion of a glowing river flowing through solid timber. With transparent blue-tinted resin, embedded LED light, and polished wood edges, the result is both functional and artistic. When illuminated, the river appears to shimmer like moonlight on water, creating a soothing ambiance perfect for a bedside table or living room accent.

WHAT YOU'LL NEED:

- Epoxy resin and hardener
- Two pieces of live-edge wood (same size)
- Measuring cups and mixing sticks

- Clamps or weights
- Clear silicone or hot glue (for sealing)
- Blue or teal translucent pigment
- LED strip light (USB or battery powered)
- Heat gun or torch
- Sandpaper (120 to 400 grit)
- Protective gloves, mask, and goggles

STEP-BY-STEP INSTRUCTIONS

1. Prepare the Wood Base

Begin by cutting two equal wood slabs with live edges facing inward. Arrange them on a plastic-covered surface so that a narrow “river gap”

runs between them. Seal the outer edges and bottom with silicone or hot glue to prevent resin leaks. Clamp the pieces securely onto a flat surface. Make sure the wood is completely dry before pouring.

2. **Mix and Tint the Resin**

Measure and mix your epoxy resin according to the manufacturer's directions. Stir slowly to reduce air bubbles. Divide the mixture if you want gradient tones. Tint one batch with a small amount of blue pigment and another with a touch of teal. The key is transparency, so use pigments sparingly to keep the resin light-reactive once the LED is added.

3. **Pour the First Layer**

Slowly pour the tinted resin into the gap between the wood slabs, filling it about halfway. Use a stick to guide the resin into corners. Run a heat gun briefly across the surface to remove bubbles. Allow this layer to partially cure for a few hours until it is slightly firm to the touch.

4. **Embed the Light**

Once the first layer is semi-cured, place your LED strip inside the river channel. Press it gently so it stays centered. Pour the remaining resin until the cavity is filled. The

embedded light will become an invisible core until switched on, giving the effect of glowing water. Remove surface bubbles with a heat gun and let the piece cure fully for 24 hours.

5. **Sand and Polish**

After curing, remove any silicone barrier and sand the edges smooth using 120 up to 400 grit sandpaper. Wipe away residue and polish the resin surface with a clean, soft cloth until it shines. If desired, apply a thin coat of wood oil to enhance the natural grain.

Pro Tip : Test your LED before sealing it inside. Once the resin cures, adjustments are no longer possible. Choose warm white or soft blue light for the most natural glow.

CREATIVE VARIATIONS

For a striking design, use two different wood types on each side, such as walnut and maple. This contrast enhances the "river" effect and makes your lamp base a true centerpiece.

TROUBLESHOOTING

If bubbles appear around the LED strip, the resin may have been poured too quickly. Work in thin layers and always warm the resin slightly before embedding lights.

FIRE & ICE COASTER SET



This project celebrates the striking contrast between cool blues and fiery reds, symbolizing the eternal dance between calm and intensity. The Fire & Ice Coaster Set is designed to capture that balance in resin, using shimmering pigments that flow into one another to create a dramatic marbled effect. Each coaster is unique, with molten streaks of color that appear to freeze mid-motion. The result is both elegant and bold, making these coasters a stunning conversation piece for any table setting.

WHAT YOU'LL NEED:

- Epoxy resin and hardener
- Measuring cups and mixing sticks
- Silicone coaster molds (round or square)

- Red, orange, and gold mica powders
- Blue, turquoise, and silver mica powders
- Fine glitter (optional for sparkle)
- Heat gun or torch
- Small cups for color mixing
- Nitrile gloves and protective mask
- Sandpaper and polishing cloth

STEP-BY-STEP INSTRUCTIONS

1. Prepare Your Workspace

Cover your work surface with plastic or parchment paper to prevent spills. Place the molds on a level surface to ensure even curing. Put on gloves and a protective mask to

stay safe from fumes. Make sure your molds are clean, dry, and free from dust before starting.

2. **Mix and Divide the Resin**

Measure and mix your epoxy resin carefully according to the manufacturer's ratio. Stir slowly for two to three minutes to minimize bubbles. Once fully blended, divide the resin into six small cups. Tint three with warm tones (red, orange, and gold) and the other three with cool tones (blue, turquoise, and silver). Add a pinch of fine glitter to each cup for extra luminosity.

3. **Pour the First Colors**

Begin by pouring a small amount of blue resin into one side of each mold. Immediately pour a stream of red or orange resin from the opposite side, allowing the two colors to meet in the middle. Do not mix; let them naturally blend where they touch. The flowing resin will create a natural "collision line" that looks like molten glass cooling in motion.

4. **Add Metallic Highlights**

Using a wooden stick or stirrer, drag thin lines of gold and silver resin along the border where the warm and cool colors meet. Move gently to avoid overmixing. This technique enhances the contrast and adds a

glowing metallic sheen that catches the light beautifully once cured.

5. **Remove Bubbles and Let Cure**

Pass a heat gun quickly over the surface to pop any air bubbles. Keep the gun moving so you do not overheat the resin. Cover the molds to protect them from dust and allow them to cure in a stable environment (70–75°F) for 24 hours or as directed by your resin brand.

6. **Demold and Finish**

When the resin has fully cured, gently remove each coaster from the mold. If edges feel sharp or uneven, sand them with fine-grit sandpaper. Wipe clean and polish with a soft cloth to bring out the natural gloss.

Pro Tip : To intensify the color contrast, pour the warm and cool resins at slightly different temperatures. Warmer resin flows more freely, creating bolder movement lines, while cooler resin holds shape and enhances definition.

CREATIVE VARIATIONS

Try adding a few drops of white resin between the red and blue sections to mimic steam or smoke. This subtle touch gives your coasters an even more dynamic "fire meeting ice" appearance.

TROUBLESHOOTING

If your colors become muddy, it means they were overmixed. Pour smaller sections and let the resin flow naturally. For dull areas, apply a thin layer of clear resin after sanding and cure again for a high-gloss finish.

OCEAN DEPTH SHADOW BOX



This project captures the tranquil beauty of the ocean's depths, where sunlight fades into mysterious blue layers. The Ocean Depth Shadow Box creates the illusion of underwater movement using translucent resin, soft gradients of blue, and embedded natural elements like sand, shells, and coral pieces. Each layer adds a sense of distance and motion, making it feel as if you are gazing into a living marine world. The result is a mesmerizing wall or shelf display that reflects serenity, texture, and color depth.

WHAT YOU'LL NEED:

- Epoxy resin and hardener
- Measuring cups and mixing sticks

- Shallow shadow box frame or deep silicone mold
- Light and dark blue mica powders
- Transparent turquoise alcohol ink
- Fine white and silver glitter
- Small natural shells, sand, and pebbles
- Tweezers for placement
- Heat gun or torch
- Nitrile gloves and protective mask

STEP-BY-STEP INSTRUCTIONS

1. Prepare Your Workspace

Lay down a protective sheet over your table and ensure your area is dust-free. Wear gloves and a mask to stay safe from fumes. If you are using a shadow box, remove the

glass front and seal the corners with painter's tape to prevent leaks. Place your project on a flat surface to maintain even curing.

2. **Mix and Color Your Resin**

Mix the epoxy resin according to the manufacturer's instructions, stirring slowly for about three minutes.

Divide it into four small cups. Tint one with light blue mica, one with dark blue, one with turquoise ink, and keep one clear. Add a pinch of glitter to each to capture the shimmer of light underwater.

3. **Pour the Base Ocean Layer**

Begin by pouring the dark blue resin to form the ocean floor. Gently add a sprinkle of sand and a few small shells into this base. Tilt the mold slightly so the layer forms a soft slope. This creates a natural depth perspective. Allow it to thicken slightly before continuing.

4. **Add Mid-Depth Layers**

Pour a thin layer of turquoise resin above the dark base. Lightly swirl it with a stick to blend the transition between deep and shallow water. Place a few shells or coral fragments in this layer, pressing them lightly with tweezers so they appear suspended. Add a bit of clear resin over them to trap air-free pockets of transparency.

5. **Surface and Light Layer**

Add the light blue resin on top, followed by a very thin clear layer to mimic sunlight at the surface.

Sprinkle fine glitter gently over this layer to simulate reflected light rays. For a dynamic finish, use your stick to make small curved streaks that resemble soft currents.

6. **Remove Bubbles and Let It Cure**

Use the heat gun carefully to remove bubbles after each pour. Keep the airflow gentle and moving to prevent overheating. Cover the piece and let it cure for 24 hours in a temperature-stable environment.

7. **Assemble and Display**

Once fully cured, remove the piece from the mold or insert it into the shadow box frame. If needed, lightly sand the edges with fine-grit sandpaper. You can place a small LED light behind it for a glowing underwater effect.

Pro Tip : Add a few drops of white pigment to the top layer and drag them gently with a toothpick to create the illusion of sunlight piercing the water's surface.

CREATIVE VARIATIONS

Create a "Tropical Reef" version using bright aqua, gold, and pink pigments with miniature coral fragments for a vibrant, exotic twist.

TROUBLESHOOTING

If bubbles remain trapped around shells, pre-coat them with resin before embedding. Uneven layers usually mean curing too quickly or tilting—always ensure your work surface is level.

CHAPTER 2 FUNCTIONAL ART

GEODE RESIN MIRROR FRAME



This project brings the stunning beauty of natural geodes to life through the reflective surface of a mirror. The Geode Resin Mirror Frame combines shimmering metallic pigments, textured edges, and crystalline accents to create a luxurious statement piece. Each layer mimics the natural bands of agate stone, turning an ordinary mirror into a sparkling centerpiece. Whether you hang it in your hallway, bedroom, or art studio, this design captures both elegance and energy, celebrating the organic flow of nature in resin form.

WHAT YOU'LL NEED:

- Epoxy resin and hardener
- Measuring cups and mixing sticks
- Round or oval mirror with removable frame
- Painter's tape and plastic drop cloth
- White, gold, and amethyst mica powders
- Crushed glass or quartz crystals
- Silicone spatula or craft stick
- Small disposable cups for tinting
- Heat gun or torch
- Nitrile gloves and protective mask

STEP-BY-STEP INSTRUCTIONS

1. Prepare the Mirror Frame

Remove the mirror from its frame if possible. If not, cover the glass completely with painter's tape to protect it from resin drips. Lay the frame on a flat, protected surface. Make sure it is clean and free from dust or oils. This step ensures that the resin adheres evenly and cures with a smooth, professional finish.

2. Mix and Tint the Resin

Measure and mix your resin according to the manufacturer's directions, stirring slowly for about three minutes to minimize bubbles. Divide the mixture into three or four small cups. Tint each with a different mica pigment such as white, gold, and amethyst. Leave a small portion of resin clear. Each color will represent a different layer of your geode design.

3. Pour the Base Layers

Start by pouring a thin layer of clear resin along the inner rim of the frame. Then add bands of white and amethyst-tinted resin outward from the center. Gently drag a craft stick through the colors to create natural curves and waves. Avoid overmixing so the color bands stay distinct. This technique mimics the growth rings found in real geodes.

4. Add Metallic Highlights and Texture

While the resin is still fluid, pour small ribbons of gold-tinted resin to highlight certain areas. Sprinkle crushed glass or quartz crystals along the outer edge for sparkle and texture. Use the end of a stick to

nudge them into the resin without submerging them completely. These reflective particles will catch the light beautifully once the piece is cured.

5. Remove Bubbles and Let It Cure

Use a heat gun to remove any bubbles that rise to the surface. Keep the heat moving to avoid burning the resin. Cover frame with a box or container to keep dust away and let it cure undisturbed for at least 24 hours at room temperature between 70–75°F.

6. Reassemble and Finish

Once cured, remove any protective tape from the mirror. Reassemble the mirror and clean the glass with a soft cloth. If the edges of the resin feel rough, you can sand them lightly with fine-grit sandpaper. The result is a gem-like frame that transforms your mirror into a work of art.

Pro Tip : For a richer look, add a drop of metallic alcohol ink into the gold resin before pouring. It creates subtle marbling and depth that resembles real mineral veins.

CREATIVE VARIATIONS

Try using turquoise, copper, and pearl pigments to create a coastal geode style. You can also adapt this technique for picture frames, tabletops, or jewelry boxes to match your home décor.

TROUBLESHOOTING

If your resin overflows or becomes uneven, you may have used too much product. Always work in thin layers and allow each one to settle before adding the next. To fix dull areas, apply a thin coat of clear resin once the piece has cured.

RESIN-COVERED CHEESE BOARD WITH GOLD VEINS



This project transforms a simple wooden cheese board into an elegant serving piece that looks like it belongs in a boutique home décor store. The combination of clear resin, soft pigments, and shimmering gold veins gives the surface a luxurious marble-like appearance. Each board turns out unique, with flowing patterns that mimic natural stone. It is both functional and artistic, perfect for entertaining guests or gifting to someone who appreciates handcrafted beauty. The gold accents elevate the design, catching the light with every movement.

WHAT YOU'LL NEED:

- Epoxy resin and hardener

- Flat wooden cheese board (sealed and sanded smooth)
- Measuring cups and mixing sticks
- White, beige, and transparent pearl mica powders
- Gold metallic pigment or gold leaf flakes
- Painter's tape and plastic drop cloth
- Heat gun or torch
- Nitrile gloves and protective mask
- Fine-grit sandpaper (400–600)
- Soft polishing cloth

STEP-BY-STEP INSTRUCTIONS

1. Prepare and Protect Your Workspace

Cover your workspace with plastic and secure the edges with tape.

Place the cheese board on small risers so resin can drip off the sides freely. Protect your hands and face with gloves and a mask. Ensure the board's surface is clean, dry, and free of dust or oils. Use painter's tape to cover the underside and handle if you want to keep them resin-free.

2. **Mix and Tint the Resin**

Measure and mix your resin according to the manufacturer's directions. Stir slowly for about three minutes until the mixture turns clear. Divide it into three small cups. Tint one with white mica, one with beige, and leave one clear. Add a touch of pearl pigment to the clear cup for a luminous effect. For the gold veins, mix a tiny amount of gold pigment or flakes into a separate cup with a small amount of resin.

3. **Pour the Base Layers**

Begin by pouring the white and beige resin in alternating diagonal lines across the board. Add small pools of the pearly clear resin between them. Allow the colors to meet naturally, forming soft marbling effects. Tilt the board slightly to help the resin flow, creating organic lines. Avoid overmixing; the beauty comes from letting the colors interact subtly.

4. **Add the Gold Veins**

Dip a thin stick or craft spatula into the gold-tinted resin. Drag fine, uneven lines across the surface, following the natural flow of the existing marbling. Less is more here; thin, irregular lines look more realistic than thick streaks. Use a heat gun briefly to help the gold settle into the resin and remove bubbles.

5. **Cure and Finish**

Allow the board to cure undisturbed for at least 24 hours in a dust-free, level area. Once hardened, peel off the tape and inspect the edges. If resin drips remain, trim or sand them gently with fine-grit sandpaper. Wipe the surface with a soft cloth for a glass-like shine.

Pro Tip : For an ultra-luxurious effect, apply a second thin coat of clear resin once the first has cured. This deepens the color contrast and enhances the gold shimmer beautifully.

CREATIVE VARIATIONS

Experiment with black and white resin instead of beige tones for a striking marble look. You can also replace gold with silver or copper accents to match your kitchen décor.

TROUBLESHOOTING

If the resin appears uneven, the surface may not have been level. Recoat with a thin layer of clear resin to even it out. For dull spots, polish lightly with a soft microfiber cloth once fully cured.

SERVING TRAY WITH RESIN HANDLES



This elegant project transforms a simple tray into a functional work of art. The Serving Tray with Resin Handles combines clarity, strength, and beauty through layered resin design and custom-poured handles. The contrast between transparent resin and shimmering pigment creates a luxurious, handcrafted look. Perfect for serving drinks, displaying candles, or adding a decorative touch to your home, this tray balances practicality with sophistication. Each handle is formed directly from resin, giving the final piece a unified aesthetic that feels professional and durable.

WHAT YOU'LL NEED:

- Epoxy resin and hardener

- Flat wooden or acrylic tray base
- Two small silicone handle molds
- Measuring cups and mixing sticks
- Gold or copper mica powder
- Clear and tinted resin dyes
- Heat gun or torch
- Painter's tape
- Fine-grit sandpaper
- Protective gloves and respirator mask

STEP-BY-STEP INSTRUCTIONS

1. Prepare Your Tray and Handles

Cover your workspace with parchment or plastic to protect from spills. Make sure the tray base and handle molds are completely clean

and dry. Apply painter's tape along the edges of the tray to prevent overflow. Position your handle molds nearby so you can pour them at the same time as the tray to ensure a color match.

2. **Mix and Tint Your Resin**

Measure and mix your epoxy resin following the manufacturer's ratio. Stir slowly for at least three minutes to avoid bubbles. Divide the resin into two parts. Tint one portion with your chosen mica color, such as gold or copper, and leave the other clear. If you want subtle marbling, add a few drops of resin dye and swirl gently.

3. **Pour the Tray Base**

Pour a thin layer of clear resin onto the tray base. Use a stick to spread it evenly. Next, drizzle the tinted resin in flowing patterns. Move the tray slightly to let the colors merge naturally. Avoid overmixing; gentle movement creates elegant veining and natural depth. Once satisfied, lightly run a heat gun over the surface to remove air bubbles.

4. **Create and Pour the Handles**

Fill your silicone handle molds with the same resin mixture used for the tray. You can layer clear and tinted resin for a translucent gemstone effect. Use a toothpick to pop any visible bubbles. Set the molds aside

on a flat surface and let them begin curing while you finish the tray.

5. **Let Both Pieces Cure**

Allow the tray and handles to cure for 24 hours at room temperature, ideally around 70–75°F. Cover them to protect from dust. Do not move them during curing, as vibration can cause uneven surfaces.

6. **Assemble and Finish**

Once cured, carefully demold the handles. Sand any rough edges with fine-grit sandpaper. Attach the handles to the tray using a small amount of mixed resin as adhesive. Let it harden fully. When complete, polish the tray with a soft cloth for a glossy finish that highlights the depth of color.

Pro Tip : For a luxurious look, mix a trace amount of metallic powder into the final clear coat. This creates a subtle shimmer that catches light beautifully without overpowering the design.

CREATIVE VARIATIONS

Try embedding small gold flakes or dried flowers in the handle molds before pouring the resin. This small artistic touch turns a simple serving tray into a statement piece that reflects your personal style.

TROUBLESHOOTING

If your handles appear cloudy, it may be due to excess moisture. Always work in a dry environment. For uneven surfaces, sand lightly and apply a thin top coat of clear resin to restore clarity.

RESIN COASTER HOLDER SET



This project pairs beautifully with any resin coaster design by creating a custom holder that keeps them neatly stacked while adding elegance to your table. The Resin Coaster Holder Set combines clear epoxy with metallic or marble pigments for a polished, cohesive finish. It transforms a simple accessory into a decorative focal point that complements your handmade coasters perfectly.

WHAT YOU'LL NEED:

- Epoxy resin and hardener
- Measuring cups and mixing sticks
- Silicone coaster holder mold
- Metallic or marble-effect mica powders
- Clear resin dye (optional)
- Heat gun or torch
- Fine-grit sandpaper (400–800)
- Nitrile gloves and mask

STEP-BY-STEP INSTRUCTIONS

1. Prepare the Mold

Clean and dry your silicone mold thoroughly to ensure there's no dust or moisture, as these can affect the finish. Place the mold on a flat, level surface lined with parchment paper or plastic to catch any resin drips. Double-check that the mold is completely even, so your piece cures with a flat surface.

2. Mix and Tint the Resin

Combine equal parts of resin and hardener according to the manufacturer's instructions. Stir slowly and consistently for about three minutes, scraping the sides and bottom of the cup to ensure a thorough mix. Divide the resin into two portions — tint one with mica pigment for color and leave the other clear for contrast.

3. Create the Base Pour

Pour a thin layer of the tinted resin into the mold, spreading it evenly to cover the bottom. Let the resin rest for 10–15 minutes to thicken slightly; this helps prevent colors from blending too much in later

steps. You can gently tap the mold to release any trapped air bubbles.

4. Add Clear Resin and Swirl

Slowly pour the clear resin over the tinted base layer to create depth. Use a mixing stick, toothpick, or skewer to form gentle, marble-like swirls in the resin. Keep your movements light and fluid — overmixing can muddy the colors and reduce the visual contrast.

5. Remove Bubbles and Cure

Run a heat gun or torch briefly over the surface to remove air bubbles, keeping it moving to avoid overheating the resin. Cover the mold with a clean box or container to protect it from dust while curing. Allow the piece to harden undisturbed for at least 24 hours before demolding.

Pro Tip : Add metallic flakes along the rim before pouring for a luxury finish.

CREATIVE VARIATIONS

Try creating a color-matched holder for each coaster set in your collection.

TROUBLESHOOTING

If the walls of the holder cure unevenly, your workspace might not be level. Adjust before the next pour.

RESIN KEY HOLDER BOARD



The Resin Key Holder Board is a perfect blend of art and utility a beautiful way to keep your keys organized while decorating your entryway. The combination of natural wood and glossy epoxy resin gives it a clean, modern appearance that fits both rustic and contemporary interiors.

Each board tells its own story: the wood's natural grain brings warmth and character, while the flowing resin patterns add a touch of creativity and individuality. Whether you choose subtle metallic tones or bold colors, your piece will be completely unique — a

functional work of art that welcomes you home every day.

WHAT YOU'LL NEED:

- Wooden board (sealed and sanded)
- Epoxy resin and hardener
- Measuring cups and mixing sticks
- Metallic or pearlescent mica powders
- Small hooks for keys
- Drill and screws
- Painter's tape
- Heat gun or torch
- Gloves and mask

STEP-BY-STEP INSTRUCTIONS

1. Prepare the Board

Clean, sand, and seal the wooden board for a smooth surface. Apply painter's tape to outline where you want the resin to go and press it down firmly to prevent leaks. Make sure everything is dry before you start pouring.

2. Mix and Tint Resin

Mix the resin and hardener according to the manufacturer's instructions. Add your chosen pigments or mica powders and stir slowly to avoid bubbles. Let the mixture sit briefly before pouring.

3. Pour and Design

Carefully pour the tinted resin into the taped areas, guiding it with a stick to form patterns or waves. Combine different colors for a marbled look. Work quickly, as resin begins to set within minutes.

4. Remove Bubbles and Cure

Use a heat gun or torch lightly to remove air bubbles from the surface. Cover the board to protect it from dust and let it cure for at least 24 hours. Avoid moving it while curing to maintain a smooth finish.

5. Finish and Assemble

Once cured, remove the tape and sand any rough edges. Drill small

holes and attach hooks for keys. Polish the surface for extra shine and mount it on your wall.

Pro Tip : For a coastal or beach-inspired design, sprinkle fine sand or add small seashells and pebbles into the resin before it cures. You can also use light blue and pearl-white pigments to mimic ocean waves or add a thin layer of transparent resin over natural elements for a "floating" effect. For a more elegant look, try gold or copper leaf flakes they catch the light beautifully and add a touch of luxury to your piece. Small design choices like these can completely transform the mood and theme of your key holder.

CREATIVE VARIATIONS

Personalize your key holder by engraving or stenciling your family name or a short quote ("Home Sweet Home," "Keys to Happiness") on the wooden section before pouring the resin. A laser engraver or stencil with acrylic paint works perfectly.

TROUBLESHOOTING

Resin bleeds under tape: Use high-quality painter's tape and press edges firmly. Pour thinner layers to reduce pressure on the tape.

Uneven finish: Sand lightly after curing and apply a thin top coat of resin for a uniform gloss.

CHAPTER 3 NATURE & ORGANIC FORMS

PRESSED FERN WALL HANGING



This project celebrates the quiet beauty of nature by preserving real fern leaves in crystal-clear resin. The Pressed Fern Wall Hanging combines earthy tones, natural textures, and transparent layers to create a timeless piece of botanical art. The delicate veins of the ferns catch the light beautifully, giving the impression of leaves floating in glass. Perfect for nature lovers, this wall piece brings a calming, organic feel to any space while highlighting the intricate details of plant life.

WHAT YOU'LL NEED:

- Epoxy resin and hardener
- Measuring cups and mixing sticks
- Flat silicone mold or shallow frame mold
- Dried and pressed fern leaves
- Tweezers and small scissors
- Clear tape or adhesive spray
- Nitrile gloves and protective mask
- Heat gun or small torch
- Toothpicks or craft sticks
- Hanging hardware or decorative cord

STEP-BY-STEP INSTRUCTIONS

1. Prepare Your Workspace

Cover your work area with plastic or parchment paper to prevent resin spills. Put on gloves and a protective mask to avoid skin contact and fumes. Make sure the mold or frame is completely clean and level.

Arrange all materials within reach, as timing is important once you start pouring resin.

2. Mix the Resin

Measure equal parts of epoxy resin and hardener following the manufacturer's instructions. Stir slowly for about three minutes, scraping the sides and bottom of your mixing cup to ensure even blending. Let the resin sit for one minute to allow larger bubbles to rise.

3. Create the Base Layer

Pour a thin layer of clear resin into the mold to create the base. Use a heat gun briefly to remove surface bubbles. Allow this layer to partially cure for about 30–45 minutes, until it becomes slightly tacky. This helps the ferns stay in place during embedding.

4. Arrange the Ferns

Using tweezers, carefully position your pressed fern leaves onto the tacky resin. Trim the stems if needed so they fit neatly inside the mold. Press gently with a stick or gloved finger to remove trapped air under the leaves. If desired, secure them with a tiny dab of resin or clear adhesive spray before the next pour.

5. Encapsulate the Ferns

Slowly pour another layer of clear resin over the leaves until they are completely covered. Work gently to avoid displacing them. Use a heat gun to eliminate bubbles, especially around the leaf edges. For a floating effect, you can pour in two stages, allowing a thin gap between layers for added depth.

6. Cure and Finish

Cover the mold with a box or lid to protect it from dust. Let it cure undisturbed for 24 hours in a warm, dry space. Once fully hardened, remove the panel carefully. Sand the edges if necessary and attach hanging hardware or thread a decorative cord through drilled holes.

Pro Tip : For a softer, vintage appearance, lightly tint the top resin layer with a drop of pearl white or champagne pigment. This subtle hue enhances the natural green tones of the ferns.

CREATIVE VARIATIONS

Replace ferns with other pressed greenery or wildflowers for a seasonal series. Combining multiple leaf types or adding a touch of metallic gold near the stems creates an elegant, botanical statement piece.

TROUBLESHOOTING

If small air pockets appear under the leaves, they were likely not pressed firmly enough. Use a toothpick to release air bubbles before the resin sets. To fix a dull surface, apply a thin clear coat and allow it to cure again.

DRIFTWOOD & RESIN CANDLE HOLDER



This project celebrates the calming harmony between nature and light. The **Driftwood & Resin Candle Holder** transforms a simple piece of beach-found wood into a stunning, functional centerpiece. The warm glow of candlelight reflecting through crystal-clear resin creates an elegant coastal charm. Each candle holder becomes unique, shaped by the natural texture and curve of the driftwood. It is the perfect project for those who love earthy, organic decor with a touch of modern artistry.

WHAT YOU'LL NEED:

- Epoxy resin and hardener
- Measuring cups and mixing sticks
- Small silicone molds or a rectangular form
- Clean, dry driftwood pieces

- Clear and pearl-white mica powder
- Gold or silver leaf flakes (optional)
- Sandpaper (fine grit)
- Heat gun or torch
- Tea light candles
- Protective gloves, mask, and plastic covering for your workspace

STEP-BY-STEP INSTRUCTIONS

1. Prepare the Driftwood

Choose a piece of driftwood that is dry and solid, preferably with an interesting shape or grain. Use sandpaper to smooth any rough edges or splinters. Clean the wood gently with a dry brush to remove any remaining sand or dust. If the wood feels slightly porous, seal it with a thin layer of resin and let it cure for a few hours before

continuing. This prevents bubbles from escaping later.

2. **Plan the Resin Sections**

Decide where you want the resin to flow. You can create resin “windows” within natural gaps in the wood or pour alongside one edge for a shoreline look. Position your driftwood inside a silicone mold or line a small tray with acetate so the resin will not stick. Secure it with tape to keep it from moving.

3. **Mix and Tint the Resin**

Measure and mix your epoxy resin according to the manufacturer’s ratio. Stir slowly for two to three minutes to reduce air bubbles. Divide the resin into two small cups. Tint one cup with a hint of pearl-white mica for a soft shimmer and keep the other clear. For an oceanic touch, add a touch of blue or gold leaf to the tinted batch.

4. **Pour and Layer**

Pour the clear resin first to fill gaps around the driftwood. Then slowly drizzle the tinted resin where you want gentle color transitions. Allow the colors to meet naturally without heavy stirring. This layering creates a translucent, water-like effect. Use a heat gun briefly to remove bubbles, keeping it a few inches away from the surface.

5. **Embed the Candle Space**

Before the resin begins to cure, press a tea light candle (or its metal holder) gently into the resin surface to create a cavity. Ensure it stays level while curing. If needed, use small supports to keep it in place. Cover the setup to protect it from dust and let it cure for 24 hours in a warm, stable environment.

6. **Demold and Finish**

Once cured, carefully remove the piece from the mold. Sand any sharp edges until smooth. You can apply a thin topcoat of clear resin for an extra glossy finish. Place the tea light back into the cavity, light it, and enjoy the soft illumination shining through resin and wood grain.

Pro Tip : For a coastal-inspired look, sprinkle a few grains of fine sand or tiny seashell fragments into the tinted layer before pouring. They will appear suspended, adding depth and natural beauty.

CREATIVE VARIATIONS

Try using darker, weathered wood and a deep amber tint for a rustic cabin aesthetic. You can also create a set of three candle holders with varying heights for an elegant table centerpiece.

TROUBLESHOOTING

If bubbles form near the wood, the surface was likely too porous. Always seal driftwood with a thin resin coat first. If your resin surface looks uneven, gently sand and apply another thin clear coat.

TERRARIUM COASTERS WITH MINI BOTANICALS



This project captures the delicate charm of nature frozen in time. The Terrarium Coasters with Mini Botanicals celebrate the beauty of pressed flowers, leaves, and tiny moss elements sealed in crystal-clear resin. Each coaster becomes a miniature garden scene, perfectly preserved and protected. Whether used for coffee cups, candles, or simply as decorative pieces, these coasters bring a serene touch of greenery to your home. The transparent layers create an illusion of depth, making each flower appear as if it's floating in a droplet of morning dew.

WHAT YOU'LL NEED:

- Epoxy resin and hardener

- Measuring cups and mixing sticks
- Silicone coaster molds (round or square)
- Dried flowers, ferns, or small leaves
- Tweezers for placement
- Clear casting pigment (optional for tinting)
- Heat gun or small torch
- Nitrile gloves and protective mask
- Fine-grit sandpaper (optional for finishing)

STEP-BY-STEP INSTRUCTIONS

1. Prepare and Organize Your Workspace

Cover your work surface with plastic or parchment paper. Ensure your

molds are completely clean and dry. Wear gloves and a mask for safety. Arrange your dried botanicals beforehand and decide on your design layout. Keeping everything ready will help you work efficiently once the resin is mixed.

2. **Mix the Resin**

Measure equal parts of epoxy resin and hardener according to the manufacturer's directions. Stir slowly for two to three minutes until the mixture becomes clear and uniform. Avoid stirring too fast, as this traps air bubbles. If you prefer a soft tint, add a single drop of transparent pigment.

3. **Pour the Base Layer**

Pour a thin layer of clear resin into each mold, about one-third full. This base will hold your botanicals in place. Use a heat gun briefly to remove any bubbles. Let the layer sit for ten to fifteen minutes until slightly thickened.

4. **Arrange the Botanicals**

Using tweezers, gently place your flowers, leaves, or moss onto the semi-cured resin. Arrange them artistically, leaving some space between elements to maintain a floating effect. Press them lightly to ensure no air is trapped beneath. Once positioned, pour another thin layer of resin to seal the design.

5. **Add the Final Layer and Cure**

After the botanicals are covered, pour the remaining resin until the molds are full. Use the heat gun again to remove surface bubbles. Cover the molds to protect them from dust and allow them to cure undisturbed for at least 24 hours in a warm, dry space.

6. **Demold and Finish**

Once cured, carefully remove the coasters from the molds. If you notice sharp edges, lightly sand them with fine-grit sandpaper. Wipe them clean and admire the preserved details of your mini terrariums.

Pro Tip : For a professional glass-like finish, apply a thin coat of clear resin over the top after sanding. This will enhance clarity and depth, making the botanicals look as if they are floating in crystal.

CREATIVE VARIATIONS

Experiment with tiny pebbles, gold flakes, or miniature shells to create themed designs such as "forest floor," "coastal garden," or "spring meadow." Each variation transforms the simple coaster into a piece of functional art.

TROUBLESHOOTING

If bubbles form around the flowers, it means air was trapped. Next time, pre-seal the botanicals with a thin resin layer before embedding. For cloudy resin, ensure your workspace stays warm and humidity-free.

DRIED CITRUS & GOLD WALL CLOCK



This elegant project celebrates the natural warmth and texture of dried citrus combined with the timeless shimmer of gold. The Dried Citrus & Gold Wall Clock is a perfect statement piece that brightens any space. The translucent resin allows the vibrant oranges and yellows of the citrus slices to glow softly, while gold leaf accents bring sophistication and luxury. It blends the rustic charm of nature with the refinement of modern resin artistry. Whether hung in your kitchen, dining room, or studio, this clock radiates energy, light, and creativity.

WHAT YOU'LL NEED:

- Epoxy resin and hardener
- Round silicone clock mold (10–12 inches diameter)
- Measuring cups and mixing sticks
- Dried orange and lemon slices (completely dehydrated)
- Gold leaf flakes or metallic foil
- Fine white and pearl mica powder
- Clock mechanism kit (hands, movement, battery)
- Heat gun or torch
- Tweezers
- Nitrile gloves and protective mask

STEP-BY-STEP INSTRUCTIONS

1. Prepare and Arrange

Cover your workspace and wear gloves and a mask. Place your silicone mold on a level surface. Arrange the dried citrus slices in the mold, experimenting with balance and spacing. Avoid stacking pieces too closely, as this can trap bubbles or create uneven thickness. Use tweezers to place gold leaf flakes between the slices. Keep the center of the mold clear for the clock mechanism hole.

2. Mix and Tint the Resin

Carefully measure and mix your epoxy resin according to the manufacturer's instructions. Stir slowly for about three minutes until fully combined. Once clear, divide the resin into two portions. Tint one with a hint of pearl or white mica for a soft glow, and leave the other transparent.

3. Pour the First Layer

Pour a thin layer of clear resin into the mold to secure the citrus slices and gold flakes. Use a heat gun briefly to remove bubbles, especially around the fruit edges. Let this layer partially cure for about two hours or until tacky. This ensures the decorative elements remain in place when you add the next pour.

4. Add the Final Layer

Gently pour the pearlescent resin over the first layer until the mold is full. Move slowly to prevent air

entrapment. The slight shimmer will enhance the fruit's color and create depth. Use the heat gun again to pop any surface bubbles. Cover the mold and allow it to cure in a dust-free area for 24 hours at room temperature.

5. Demold and Assemble the Clock

Once the resin is fully hardened, gently remove the piece from the mold. Drill a small hole in the center if your mold does not have one. Insert the clock mechanism through the hole from the back and attach the hands. Adjust the placement so the hands move freely without touching the resin surface.

Pro Tip : For a luxurious look, brush a tiny amount of gold pigment along the clock's rim before sealing. This adds a subtle metallic halo effect that catches light beautifully.

CREATIVE VARIATIONS

Replace citrus slices with pressed flowers or herbs for a softer, botanical design. Alternatively, use silver leaf instead of gold for a cooler, more modern aesthetic.

TROUBLESHOOTING

If you notice bubbles trapped under the citrus slices, they may not have been fully dried. Always ensure organic materials are moisture-free. For dull or uneven spots, apply a thin coat of clear resin and let it cure again.

PINECONE JEWELRY BOX LID



This project celebrates the rustic beauty of nature by turning a simple pinecone into the focal point of an elegant resin jewelry box lid. The combination of natural textures and glossy resin creates a timeless piece that looks both organic and refined. The warm tones of the pinecone contrast beautifully with the crystal-clear resin, while gold accents add a touch of luxury. The result is a lid that feels handcrafted yet polished, perfect for holding your cherished treasures or gifting to someone special.

WHAT YOU'LL NEED:

- Epoxy resin and hardener
- Mixing cups and wooden sticks

- Shallow silicone mold (lid-sized or circular)
- Clean, dry pinecones (small or medium)
- Metallic gold mica powder or gold leaf flakes
- Tweezers
- Heat gun or torch
- Sandpaper (fine grit)
- Nitrile gloves and mask
- Small paintbrush

STEP-BY-STEP INSTRUCTIONS

1. Prepare the Pinecone and Workspace

Begin by covering your workspace with plastic or parchment paper. Put

on gloves and a mask to ensure safety. Trim the pinecone's base so it can sit flat within the mold. Brush off any loose debris and make sure it is completely dry. If you wish to highlight the details, lightly brush gold mica powder on the edges of the pinecone scales before embedding it in resin.

2. **Mix and Tint the Resin**

Carefully measure equal parts of resin and hardener, then mix slowly for about three minutes. Stir gently to reduce bubbles. For a subtle background, divide a small portion of resin and tint it with a bit of gold or amber mica powder. Keep the remaining resin clear.

3. **Pour the First Layer**

Pour a thin layer of clear resin into the mold, just enough to cover the bottom. Use a heat gun briefly to remove surface bubbles. Let this layer sit for about 20 minutes until slightly tacky. This will help the pinecone stay in place during embedding.

4. **Embed the Pinecone**

Place the pinecone gently in the center of the mold, pressing it slightly into the tacky resin. Pour more clear resin slowly around and over the pinecone until it is covered halfway. If desired, sprinkle a few gold flakes or a light dusting of mica powder to add shimmer. Allow this

layer to rest for 10–15 minutes to let trapped air escape.

5. **Add the Final Layer**

Pour the remaining clear resin to fully cover the pinecone, ensuring the surface is level. Use the heat gun once more to remove bubbles. Cover the mold to protect it from dust and allow it to cure for at least 24 hours in a warm, dry area.

6. **Demold and Finish**

Once cured, gently remove the lid from the mold. If edges are uneven, sand them carefully with fine-grit sandpaper. You can apply a very thin top coat of clear resin for a flawless gloss. Attach the finished piece to your jewelry box base using a small hinge or adhesive.

Pro Tip : For a soft golden glow, mix a drop of metallic pigment into the final clear layer before pouring. It will catch the light beautifully without hiding the pinecone's details.

CREATIVE VARIATIONS

Try embedding small dried flowers or acorns around the pinecone for a woodland-inspired design. You can also use silver leaf instead of gold for a cooler, more modern finish.

TROUBLESHOOTING

If your pinecone floats during curing, wait until the resin thickens slightly before placing it. To fix cloudy spots, lightly sand and apply another thin coat of clear resin.

CHAPTER 4 COLOR MASTERY

MARbled JEWELRY SET



This project transforms simple resin into the timeless elegance of marble. The Marbled Jewelry Set teaches you how to mimic natural stone patterns using resin, pigments, and controlled swirling. Each piece will have unique veining, subtle shimmer, and a high-gloss finish that looks like polished marble. You can customize the color palette to match classic white marble, soft rose quartz, or dramatic black onyx. The beauty of this technique lies in its imperfection: no two pendants or earrings will ever look exactly the same.

WHAT YOU'LL NEED:

- Epoxy resin and hardener
- Jewelry molds (pendant and earring shapes)
- Measuring cups and mixing sticks
- White and grey mica powders
- Metallic pigment paste (optional gold or silver)
- Toothpicks or fine stirring sticks
- Nitrile gloves and protective mask
- Heat gun or torch
- Small drill or jewelry findings kit (hooks, clasps, cords)
- Sandpaper and polishing cloth

STEP-BY-STEP INSTRUCTIONS

1. Prepare and Organize Your Workspace

Cover your work surface with plastic or parchment paper to catch spills. Ensure your molds are clean, dry, and free from dust. Put on gloves and a mask before handling resin. Arrange your tools and pigments nearby so you can work efficiently once the resin is mixed.

2. Mix and Divide the Resin

Measure equal parts of resin and hardener according to the manufacturer's instructions. Stir gently for about three minutes, scraping the sides and bottom of the cup to ensure a full mix. Divide the resin into three small cups. Tint one with white mica, one with a small amount of grey, and leave the third clear. Add a hint of metallic pigment to the clear resin for soft reflective highlights.

3. Create the Marble Base Layer

Pour the white-tinted resin first to fill the base of each mold about halfway. Then add thin streaks of grey resin across the white surface. Use a toothpick to gently swirl the colors together in random, flowing lines. Avoid overmixing so the veins stay crisp. A few controlled movements are enough to mimic natural marble striations.

4. Add Highlights and Depth

Using the metallic-tinted resin, draw a few delicate veins alongside the grey lines to imitate mineral deposits. Pour a thin layer of clear

resin over the top to encapsulate the pattern and add depth. This clear layer enhances the illusion of polished stone once cured.

5. Remove Bubbles and Cure

Use a heat gun or torch to remove surface bubbles. Keep the heat source moving to prevent damage to the mold. Let the resin cure undisturbed for 24 hours in a stable, dust-free environment.

6. Demold and Assemble

Once fully cured, gently remove the pieces from their molds. Sand any rough edges with fine-grit sandpaper and polish the surfaces to a glossy shine. Drill small holes if necessary and attach hooks, clasps, or cords to complete your jewelry set.

Pro Tip : To achieve a more natural marble effect, let the resin thicken slightly before swirling. The thicker consistency prevents the colors from blending too much and keeps the veins well defined.

CREATIVE VARIATIONS

Experiment with rose, jade, or black tones for unique stone effects. You can also add crushed gold leaf or metallic flakes between layers for an elegant, high-end marble finish.

TROUBLESHOOTING

If the veins appear too faint, use a slightly darker pigment or add a second pour with subtle grey streaks. If bubbles form inside the mold, pre-warm the resin slightly before mixing to reduce trapped air.

OPAL EFFECT PENDANTS



This project captures the magical shimmer of real opals using resin, iridescent flakes, and pearlescent pigments. The result is a pendant that changes color as it moves, reflecting light in delicate pink, blue, and green tones. Each piece feels like a gemstone born from light itself. The beauty of this project lies in layering and transparency, allowing the colors to glow from within. These pendants make wonderful gifts or personal accessories and are surprisingly easy to customize with your favorite hues and shapes.

WHAT YOU'LL NEED:

- Epoxy resin and hardener

- Small silicone jewelry molds (pendants or cabochons)
- Measuring cups and mixing sticks
- White pearl mica powder
- Iridescent flakes or crushed cellophane
- Transparent blue and pink alcohol inks
- Toothpicks or stir sticks
- Nitrile gloves and protective mask
- Heat gun or lighter
- Small drill or jewelry findings for finishing

STEP-BY-STEP INSTRUCTIONS

1. **Prepare Your Workspace and Molds**

Cover your surface with plastic or parchment paper and make sure your molds are clean and dust-free. Put on gloves and a mask for safety. Arrange all materials so you can work efficiently once the resin is mixed. Because this project relies on timing, preparation is key.

2. **Mix and Divide Your Resin**

Combine the epoxy resin and hardener following the manufacturer's ratio. Stir slowly for about three minutes until fully blended. Divide the mixture into three small cups. Tint one with white pearl mica, one with a drop of blue ink, and one with a hint of pink. Leave a portion clear for later layering.

3. **Create the Opal Base Layer**

Pour a thin layer of the pearly white resin into the mold as the foundation. Sprinkle a small amount of iridescent flakes over it, pressing them down lightly with a toothpick so they sink slightly. This will form the reflective core that gives the opal its inner glow. Allow it to rest for about ten minutes before adding more resin.

4. **Add Color and Depth**

Drizzle small streaks of the blue and pink tinted resin over the base. Use a toothpick to gently swirl the colors together, keeping the motion minimal to preserve separation. Pour a thin layer of clear resin on top to trap the colors beneath and enhance depth. When light passes

through, it will create that signature shifting opal sheen.

5. **Remove Bubbles and Let Cure**

Pass a heat gun or lighter briefly over the surface to remove bubbles. Keep the heat moving constantly to avoid damaging the mold. Cover the pieces with a box to protect them from dust and let them cure undisturbed for at least 24 hours at room temperature.

6. **Demold and Finish**

Once fully cured, carefully remove the pendants from the mold. If edges are sharp, sand them gently with fine-grit sandpaper. You can drill a small hole at the top and attach a jump ring or cord. A quick polish with a soft cloth will enhance the gemstone-like shine.

Pro Tip : To create a stronger play of color, layer a second pour of resin with more flakes after the first has partially cured. This adds extra dimension and brilliance.

CREATIVE VARIATIONS

Experiment with other hues such as lavender, mint, or golden tones for different gemstone effects. Small molds for earrings or rings also work beautifully with the same method.

TROUBLESHOOTING

If the flakes float to the top, allow the first layer to thicken slightly before adding them. If the piece looks cloudy, too much pigment was used; a thin clear topcoat can restore clarity.

TROPICAL WAVE RESIN COMB



This project captures the calm rhythm of the ocean in a stunning and practical accessory. The Tropical Wave Resin Comb mirrors the turquoise shimmer of shallow waters and the soft foam of breaking waves. By combining transparent layers with gradient blue pigments and fine shimmer, you will create a comb that feels both elegant and refreshing. Each tooth glows slightly when light passes through, adding a touch of seaside magic. It is a perfect project for makers who love combining beauty with function.

WHAT YOU'LL NEED:

- Epoxy resin and hardener
- Measuring cups and mixing sticks

- Silicone comb mold
- Turquoise, teal, and white mica powders
- Fine pearl shimmer or glitter
- Small disposable cups for tinting
- Heat gun or torch
- Nitrile gloves and protective mask
- Sandpaper (400–1000 grit)
- Polishing cloth

STEP-BY-STEP INSTRUCTIONS

1. Prepare and Protect Your Workspace

Cover your surface with plastic or parchment paper. Wear gloves and a mask to avoid contact with fumes

and resin. Ensure your silicone mold is clean and dry. Keep all materials within reach and the room temperature around 70–75°F for best curing results.

2. **Mix and Divide the Resin**

Mix the epoxy resin and hardener according to the manufacturer's ratio. Stir slowly for about three minutes to reduce air bubbles. Divide the mixture into three cups. Tint one with turquoise mica, one with teal, and the last one with white. Add a tiny amount of pearl shimmer to each cup to enhance reflection.

3. **Create the Ocean Gradient**

Pour the turquoise resin first, starting from one side of the comb mold. Next, pour the teal resin so it flows naturally into the turquoise without sharp lines. Finally, add small streaks of white resin along the edges or tips to mimic sea foam. Use a stick to lightly blend the colors where they meet, keeping the gradient soft and natural.

4. **Add Sparkle and Depth**

Sprinkle a small pinch of fine glitter or pearl shimmer across the top layer. This creates a sunlight reflection effect, like waves catching the morning light. You can also add a few drops of clear resin on top to build a gentle depth, making the

colors appear suspended below the surface.

5. **Remove Bubbles and Cure**

Quickly pass a heat gun over the surface to remove any visible bubbles. Move the heat evenly and keep it at a safe distance to avoid warping the mold. Cover the piece to protect it from dust and let it cure for 24 hours without moving.

6. **Demold and Finish**

Once the resin has fully cured, gently remove the comb from the mold. Sand the edges using 400–1000 grit sandpaper until smooth. Polish the entire surface with a soft cloth to bring out the shine and highlight the color transitions.

Pro Tip : For an even more oceanic effect, mix a drop of glow pigment into the turquoise layer. Under sunlight or UV light, it will emit a faint blue glow reminiscent of tropical bioluminescence.

CREATIVE VARIATIONS

Try using pastel pink or coral in place of teal for a sunrise beach look. You can also embed tiny seashells or gold flakes along the comb's spine for a luxurious tropical accent.

TROUBLESHOOTING

If your layers blend too quickly, wait five minutes before adding the next color. If you notice dull spots after curing, sand lightly and apply a thin coat of clear resin to restore gloss.

HOLOGRAPHIC PHONE CASE INSERTS



This project transforms ordinary phone cases into dazzling works of art that shimmer with shifting colors and depth. The Holographic Phone Case Inserts combine transparent resin, iridescent film, and subtle metallic pigments to create a design that changes appearance depending on the angle and light. The finished insert catches rainbows when tilted and gives any clear phone case a futuristic, high-end look. It is a perfect small-scale project for experimenting with holographic materials and mastering control over thin resin pours.

WHAT YOU'LL NEED:

- Epoxy resin and hardener

- Silicone phone case mold or reusable plastic phone case base
- Iridescent or holographic film (thin and flexible)
- Fine silver or pearl mica powder
- Measuring cups and mixing sticks
- Nitrile gloves and protective mask
- Heat gun or torch
- Small scissors or craft knife
- Tweezers
- Soft cloth for cleaning
- Clear spray sealant (optional)

STEP-BY-STEP INSTRUCTIONS

- 1. Prepare Your Workspace**
Cover your table with a plastic sheet and make sure the area is well

ventilated. Clean the silicone mold or phone case base thoroughly so no dust or fingerprints interfere with clarity. Put on gloves and a mask. Have all materials ready before mixing, since thin layers of resin begin to cure quickly.

2. **Mix and Tint the Resin**

Measure and mix the epoxy resin according to the manufacturer's instructions. Stir slowly for three minutes, scraping the sides and bottom of the cup. Pour a small portion into another cup and add a touch of silver or pearl mica powder. Keep the rest clear. You can also mix a drop of transparent tint for a subtle hue such as blue or violet.

3. **Position the Holographic Film**

Cut the iridescent film slightly smaller than your phone case mold. Use tweezers to place it flat at the bottom of the mold with the shiny side facing up. Make sure it lies smoothly without folds. If desired, cut small shapes from the film such as triangles or stripes for a geometric look.

4. **Pour and Layer the Resin**

Pour a thin layer of clear resin over the film first, letting it settle gently to avoid trapping air. Then drizzle small amounts of the tinted or pearl resin in swirling lines across the surface. Do not stir. The goal is to let the layers interact naturally, creating glowing movement as the light passes through.

5. **Remove Bubbles and Cure**

Use a heat gun to carefully eliminate bubbles. Keep the tool moving and

hold it several inches above the resin. Cover the mold to prevent dust contamination. Allow the piece to cure completely for 24 hours at room temperature between 70–75°F.

6. **Trim and Polish**

Once cured, remove the insert from the mold. Trim excess edges with a craft knife or fine scissors so it fits perfectly into a clear phone case. Wipe the surface with a soft cloth. For extra protection, you may spray a light coat of clear sealant to enhance shine and scratch resistance.

Pro Tip : Hold your finished insert near a window or under a lamp. As you tilt it, you will notice color shifts from turquoise to magenta to gold. This multidimensional sparkle depends on light direction, giving every phone a unique appearance.

CREATIVE VARIATIONS

Experiment with layering two different holographic films for a double-reflection effect. You can also embed a printed photo or logo between the layers for a personalized insert that glows with prismatic color.

TROUBLESHOOTING

If you see trapped bubbles beneath the holographic film, press the film gently into the resin with tweezers before curing. Should your surface appear slightly dull, apply a thin clear top coat and let it cure again for a mirror finish.

RESIN BOOKMARK WITH FLOATING INK BLOOMS



This project celebrates the magic of movement and color through suspended ink patterns that seem to float forever inside clear resin. The Resin Bookmark with Floating Ink Blooms captures the dreamy look of watercolor on air, where drops of ink expand into delicate shapes that freeze mid-bloom. Each bookmark becomes a one-of-a-kind piece of functional art, perfect as a gift or as a personal keepsake. The transparent layers enhance the illusion of motion, turning something simple into something mesmerizing.

WHAT YOU'LL NEED:

- Epoxy resin and hardener

- Measuring cups and mixing sticks
- Silicone bookmark mold
- Alcohol inks in at least three colors
- White alcohol ink or resin ink for blooming effect
- Nitrile gloves and protective mask
- Pipettes or small droppers
- Heat gun or lighter
- Toothpick or fine stick for detailing
- Tweezers (optional for embedding extras like gold flakes)
- Fine sandpaper and polishing cloth

STEP-BY-STEP INSTRUCTIONS

1. Prepare Your Workspace

Cover your work surface with parchment or plastic to protect from

spills. Make sure the mold is clean and completely dry. Wear gloves and a mask to protect from fumes. Keep your alcohol inks and tools within reach, you need to work quickly once the resin is poured.

2. **Mix the Resin**

Measure and mix your epoxy resin according to the manufacturer's directions. Stir slowly for three minutes, scraping the sides and bottom of your cup. Let the mixture rest for a minute to release air bubbles. Pour the resin gently into your silicone mold, filling it nearly to the top but leaving a small gap for layering later.

3. **Drop in the Inks**

Once the resin has settled, use pipettes to add drops of colored alcohol inks to the surface. Allow each drop to spread naturally. After about thirty seconds, add a small drop of **white ink** over each color. This white pigment is heavier and pushes the colors downward, creating a blooming or "petal" effect. Alternate colors for a more organic look. Avoid stirring, as movement will blur the patterns.

4. **Enhance and Layer**

To add dimension, wait ten minutes until the resin thickens slightly. Then add a few small drops of contrasting ink and clear resin on top to create depth. You can use a

toothpick to nudge certain blooms or create gentle waves. For a touch of shimmer, embed a few gold or silver flakes using tweezers. Keep the design balanced and airy.

5. **Remove Bubbles and Let It Cure**

Use a heat gun briefly over the surface to remove bubbles. Keep the heat moving to avoid overheating or distorting the ink blooms. Cover the mold with a lid or box to prevent dust. Let it cure for at least 24 hours at room temperature between 70–75°F.

6. **Demold and Finish**

After curing, gently remove the bookmark from the mold. If edges feel sharp, smooth them with fine sandpaper. Wipe the surface with a soft cloth to restore shine. You can tie a ribbon or tassel through the hole at the top for a polished finish.

Pro Tip : For softer diffusion, chill the inks slightly before adding them to the resin. Cooler inks slow the spread, creating more defined petal edges.

CREATIVE VARIATIONS

Try adding a thin layer of transparent resin first, letting it half-cure, then bloom the inks on the second layer for a true 3D floating effect.

TROUBLESHOOTING

If the blooms spread too far or look cloudy, your resin was too thin or warm. Next time, let the mixture rest longer before adding ink.

CHAPTER 5 ADVANCED POURING & COMPOSITIONS

SPLIT-POUR WALL ART



This project celebrates the elegance of contrast and flow. The Split-Pour Wall Art uses two resin colors poured simultaneously to create a natural, organic division that mimics marble or flowing water. The result is a modern statement piece with clean movement and visual depth. By carefully controlling how the resins meet, you'll produce graceful boundaries where pigment and transparency blend in soft gradients. This technique allows endless variations in tone and pattern, perfect for matching interior décor or experimenting with texture and color balance.

WHAT YOU'LL NEED:

- Epoxy resin and hardener
- Two measuring cups and mixing sticks
- Flat wooden panel or round board (sealed surface)
- Painter's tape and plastic sheeting
- Pigment pastes or mica powders in two contrasting colors
- Metallic accent powder (optional)
- Heat gun or small torch
- Nitrile gloves and protective mask
- Leveling stand or sturdy surface

STEP-BY-STEP INSTRUCTIONS

1. Prepare and Protect Your Workspace

Lay down plastic or parchment paper to catch spills and drips. Tape

the edges of your board to create a clean frame. Make sure the surface is level, as an uneven base can distort the split line. Wear gloves and a mask for safety and ensure proper ventilation.

2. **Mix and Tint the Resin**

Measure equal parts of epoxy resin and hardener according to the manufacturer's ratio. Stir slowly for three minutes to reduce bubbles. Divide the mixture evenly into two cups. Add your chosen pigments to each—perhaps one dark and one light. Mix until colors are smooth and consistent, keeping one cup slightly more transparent for depth.

3. **Create the Split Pour**

Carefully pour both colors at the same time from opposite sides of the panel. Let them meet naturally in the center, forming a flowing, irregular line. Do not force them together. Allow the resins to find their own boundary; this is what creates the elegant split effect. You can tilt the board slightly if you want to adjust the flow.

4. **Add Details and Movement**

While the resin is still fluid, sprinkle a fine metallic accent along the meeting line for a luxurious touch. Use a stick or a gloved finger to slightly drag through the border, softening transitions and creating natural marbling. Avoid overworking; the beauty of this project lies in subtle, spontaneous blending.

5. **Remove Bubbles and Let It Cure**

Use a heat gun in smooth, quick passes to remove surface bubbles. Keep the tool at least six inches away to avoid overheating. Once satisfied with the texture, cover the artwork with a dust-free box and let it cure for 24 hours at room temperature (70–75°F).

6. **Demold and Finish**

When fully cured, remove any tape and inspect the surface. If there are rough edges, sand gently with fine-grit paper. For a glass-like finish, you can apply a thin coat of clear resin or polish with a microfiber cloth. Mount the piece vertically or frame it for display.

Pro Tip : To emphasize the contrast line, use metallic pigment like gold or copper between the two colors. It will highlight the split and catch light beautifully.

CREATIVE VARIATIONS

Try using three colors for a gradient split effect. Pour the lightest in the center and the darker shades on each side to create a fluid transition that resembles flowing minerals or ocean currents.

TROUBLESHOOTING

If the resin colors mix too much, your surface might not be perfectly level or your pour speed was uneven. Next time, slow down the pour and use thicker resin for better control.

METAL LEAF RIVER BOARD



This project celebrates the stunning elegance of flowing metal leaf embedded within a smooth river of resin. The Metal Leaf River Board captures the luxurious contrast between natural wood and shimmering metallic tones. By pouring translucent resin through the center of a wooden board and layering gold or copper leaf, you create the illusion of a molten stream winding through solid earth. It is perfect as a serving tray, centerpiece, or decorative accent that brings warmth and sophistication to any room.

WHAT YOU'LL NEED:

- Epoxy resin and hardener
- Measuring cups and mixing sticks

- Wood board with a natural live edge or pre-cut river groove
- Gold, copper, or silver metal leaf sheets
- Tweezers and soft brush
- Small mixing cups
- Heat gun or torch
- Painter's tape and plastic sheeting
- Nitrile gloves and protective mask
- Fine-grit sandpaper and polishing cloth

STEP-BY-STEP INSTRUCTIONS

1. Prepare the Wooden Base

Begin by cleaning and lightly sanding the wood surface to remove dust or oils. If your board has cracks

or natural grooves, seal them with tape from underneath to prevent leaks. Place the board on a level, covered surface. Protect your work area with plastic sheeting. The success of this project depends on ensuring no resin escapes through small gaps.

2. **Mix and Tint the Resin**

Measure and mix your resin according to the instructions on the label. Stir slowly for two to three minutes to minimize air bubbles. Divide the mixture into two cups. Tint one with a small amount of metallic mica powder matching your chosen leaf color, and leave the other clear. This combination enhances light reflection around the metal leaf.

3. **Create the River Channel**

Pour a thin layer of clear resin into the center groove or gap of your board. Allow it to self-level. Using tweezers, carefully lay pieces of metal leaf onto the surface. Gently press them down with a soft brush so they float slightly beneath the resin. Add the tinted resin along the edges to give the impression of depth and movement, as if liquid gold or copper flows between the wood.

4. **Add Dimension and Texture**

Once the first pour begins to thicken, apply a second thin layer of resin.

This locks the leaf in place and adds optical depth. You can add a few tiny flakes of contrasting metal leaf for sparkle. Use a heat gun briefly to remove bubbles, keeping the heat moving to avoid scorching the wood.

5. **Cure and Finish**

Cover the board to protect it from dust. Let it cure for 24 hours in a stable, warm environment. Once hardened, remove any tape and sand the edges with fine-grit sandpaper. Polish with a soft cloth to achieve a smooth, glass-like surface that highlights the metallic shine beneath.

Pro Tip : Apply a thin coat of food-safe oil or clear resin finish to the wood portions for extra gloss and protection. This enhances contrast and makes the metallic river appear even more luminous.

CREATIVE VARIATIONS

Experiment with mixing silver and gold leaf in one pour for a marbled metallic river effect. You can also add crushed glass or glitter near the edges for a luxurious crystal finish.

TROUBLESHOOTING

If metal leaf floats to the surface, wait until the resin begins to thicken before embedding it. For cloudy areas, apply a thin final coat of clear resin after full curing.

LAYERED LANDSCAPE SCENE



This project captures the tranquility of nature through layers of color, texture, and transparency. The Layered Landscape Scene allows you to recreate a scenic horizon using resin, pigment, and imagination. Each layer represents a part of the view: the sky, mountains, and reflective water below. When light passes through, it creates the illusion of distance and atmosphere. The final result is a peaceful piece of art that resembles a miniature landscape suspended in glass.

WHAT YOU'LL NEED:

- Epoxy resin and hardener
- Measuring cups and mixing sticks
- Rectangular silicone mold or frame mold

- Mica powders in blue, green, brown, and white
- Alcohol inks (optional)
- Fine glitter or metallic powder for highlights
- Small disposable cups for tinting
- Stirring sticks and tweezers
- Heat gun or torch
- Nitrile gloves, apron, and protective mask

STEP-BY-STEP INSTRUCTIONS

- 1. Prepare the Mold and Workspace**
Cover your work area with parchment or plastic to protect from drips. Put on gloves and a mask to ensure safety. Clean and dry your silicone mold thoroughly. Place it on

a flat, level surface to keep the resin layers even. Arrange your pigment cups and tools within reach, as layering needs to be done efficiently.

2. **Mix and Divide Your Resin**

Follow the manufacturer's ratio to mix the resin and hardener slowly for about three minutes. Divide the mixture into four small cups. Tint one with blue mica for the sky, one with green for the hills, one with brown for the earth, and leave one cup clear. A few drops of alcohol ink can enhance depth and tone variation.

3. **Pour the Base Earth Layer**

Start by pouring the brown-tinted resin across the lower part of the mold. Tilt slightly if you want a natural slope. Let this layer settle for 15–20 minutes before using the heat gun to remove bubbles. Allow it to partially cure until tacky. This will prevent colors from blending too much in the next pour.

4. **Add the Hills and Sky Layers**

Pour the green resin above the brown base, forming gentle rolling hills. Use a stick to create small undulations or add a thin swirl of clear resin for a misty valley effect. Once this layer begins to thicken, pour the blue resin on top for the sky. Blend lightly at the horizon line to soften transitions. A small streak

of white resin can represent distant clouds.

5. **Finish with Reflection and Details**

When the upper layers begin to cure, pour a thin coat of clear resin over everything. Add small dots of metallic powder or glitter to simulate sunlight reflecting on water. Pop bubbles gently with the heat gun and cover to cure for at least 24 hours at room temperature.

6. **Demold and Polish**

After curing, remove the piece carefully from the mold. Sand the edges with fine-grit sandpaper if necessary, and polish with a soft cloth to achieve a glossy finish. Hold it up to the light and enjoy how the layers create a vivid sense of space and depth.

Pro Tip : Use a thin brush to drag small lines through the green resin while it thickens. This creates the illusion of trees or grass along the hills.

CREATIVE VARIATIONS

Try using warm sunset tones instead of cool blues and greens. A gradient of orange, pink, and violet can transform the piece into a glowing evening landscape.

TROUBLESHOOTING

If layers bleed together, you poured too soon. Let each layer partially set before adding the next. Cloudiness can be fixed by adding a thin clear topcoat after full curing.

RESIN GEOMETRIC TRAY



This project celebrates the clean symmetry and modern elegance of geometric design. The Resin Geometric Tray uses sharp lines, contrasting colors, and layered pours to create a bold statement piece that looks like modern art. The effect is mesmerizing: crisp angles, smooth resin shine, and a depth that catches the light from every direction. This tray works beautifully as a display for candles, jewelry, or as a stylish accent for any table. It is a perfect example of how precision and creativity meet in resin artistry.

WHAT YOU'LL NEED:

- Epoxy resin and hardener
- Measuring cups and mixing sticks

- Silicone tray mold (square or rectangular)
- Painter's tape or silicone dividers for geometric sections
- Mica powders in three contrasting shades (such as white, gold, and teal)
- Fine metallic flakes or gold leaf
- Mixing cups for tinting
- Heat gun or torch
- Nitrile gloves, mask, and protective surface covering

STEP-BY-STEP INSTRUCTIONS

1. Prepare Your Workspace and Mold

Cover your table with plastic or parchment paper. Wear gloves and a

protective mask to ensure safe handling. Place your silicone mold on a perfectly level surface. Make sure it is clean, dry, and free from dust. Use painter's tape or flexible silicone dividers to separate sections inside the mold. This will help you achieve the crisp geometric pattern later.

2. **Mix and Divide the Resin**

Measure and mix the epoxy resin according to the manufacturer's instructions. Stir slowly for three minutes, scraping the sides and bottom to combine thoroughly. Divide the resin into four small cups. Tint each cup with a different mica shade, leaving one clear for layering. Add a touch of metallic flakes or gold leaf to the colored portions to enhance visual contrast.

3. **Pour the Geometric Segments**

Begin pouring each color into the designated taped sections of the mold. Pour slowly to maintain clean edges and avoid overflow. If resin seeps under the tape, do not worry; it can be trimmed or sanded later. Allow each section to self-level before proceeding to the next color. The goal is to create distinct shapes that fit together like pieces of a puzzle.

4. **Create a Clear Top Layer for Depth**

Once the geometric base begins to set slightly, carefully remove the tape dividers. Mix a small batch of clear resin and pour it gently over the entire surface. This step seals the colors and creates a smooth, glass-like finish. The transparent top

coat also adds optical depth, giving your design a polished, professional look.

5. **Eliminate Bubbles and Let It Cure**

Use a heat gun in quick sweeping motions to remove surface bubbles. Avoid concentrating heat in one area to prevent distortion. Cover the mold with a dust-free lid or box. Let it cure for at least 24 hours in a stable environment between 70–75°F.

6. **Demold and Finish**

After full curing, gently release the tray from the mold. If any edges are uneven, sand them with fine-grit sandpaper. Wipe the surface with a soft, lint-free cloth. A thin coat of clear resin can be applied for extra shine if desired.

Pro Tip : For ultra-clean geometric lines, chill your resin for five minutes before pouring. Thicker resin flows more slowly, helping prevent color bleeding between sections.

CREATIVE VARIATIONS

Experiment with metallic tones like silver and copper for an industrial look, or use pastel shades for a soft, modern aesthetic. You can also embed small shapes or dried flowers within each geometric section to add texture and dimension.

TROUBLESHOOTING

If your edges are uneven, your mold may not have been level. Use a small spirit level before pouring. To correct dull spots, lightly sand the area and apply a thin coat of clear resin.

FLOATING OBJECT DISPLAY BLOCK



This project celebrates the fascinating illusion of objects floating in clear resin, creating a timeless display piece that appears to suspend reality itself. The Floating Object Display Block allows you to preserve meaningful items such as shells, dried flowers, coins, or keepsakes inside a crystal-clear epoxy block. When light passes through it, every embedded object seems to hover in space. It is an elegant way to capture memories or showcase natural textures in a minimalist, modern form suitable for desks, shelves, or galleries.

WHAT YOU'LL NEED:

- Epoxy resin and hardener
- Measuring cups and mixing sticks

- Rectangular or cube silicone mold
- Small decorative objects (shells, dried flowers, coins, or beads)
- Clear casting pigment (optional)
- Heat gun or torch
- Tweezers
- Fine-grit sandpaper (1000–3000)
- Nitrile gloves and protective mask
- Level surface and dust cover

STEP-BY-STEP INSTRUCTIONS

1. Prepare and Protect Your Workspace

Lay out plastic sheeting or parchment paper to protect your surface. Ensure the mold is completely clean and dry. Place it on

a perfectly level table, as any tilt will cause uneven resin distribution. Put on gloves and a mask for safety. Arrange your chosen objects nearby so you can access them quickly while pouring.

2. **Mix the Resin Carefully**

Measure equal parts of epoxy and hardener following the manufacturer's ratio. Mix slowly for three minutes until the liquid becomes uniform and clear. Avoid whipping air into the mixture to reduce bubbles. If you wish to add a subtle tint, use only one drop of transparent pigment. Keep the resin as clear as possible to maximize the illusion of suspension.

3. **Pour the First Layer**

Pour a thin layer of clear resin, about one-quarter of your mold's depth. Use the heat gun briefly to remove surface bubbles. Let this layer partially cure for about one hour or until it reaches a gel-like consistency. This stage prevents objects from sinking when you place them later.

4. **Add the Floating Objects**

Using tweezers, gently position your chosen items onto the semi-cured layer. Arrange them artistically, leaving space between each so they appear to float independently. Once satisfied, pour another layer of clear resin to cover the objects completely. Work slowly to avoid trapping air pockets around them.

5. **Build the Layers**

Continue layering resin and additional objects until the mold is full. Allow each layer to gel before pouring the next to maintain clear separation. For deeper molds, alternate between small and large pieces to enhance depth perception. Use the heat gun lightly after every pour to pop surface bubbles.

6. **Cure and Finish**

Cover the mold to protect it from dust and allow it to cure for 24 to 48 hours at room temperature. Once hardened, demold carefully. If edges are rough, smooth them using fine-grit sandpaper and polish with a microfiber cloth until glossy.

Pro Tip : To achieve flawless clarity, warm the resin bottles slightly in warm water before mixing. This reduces viscosity, allowing bubbles to escape more easily and resulting in a glass-like finish.

CREATIVE VARIATIONS

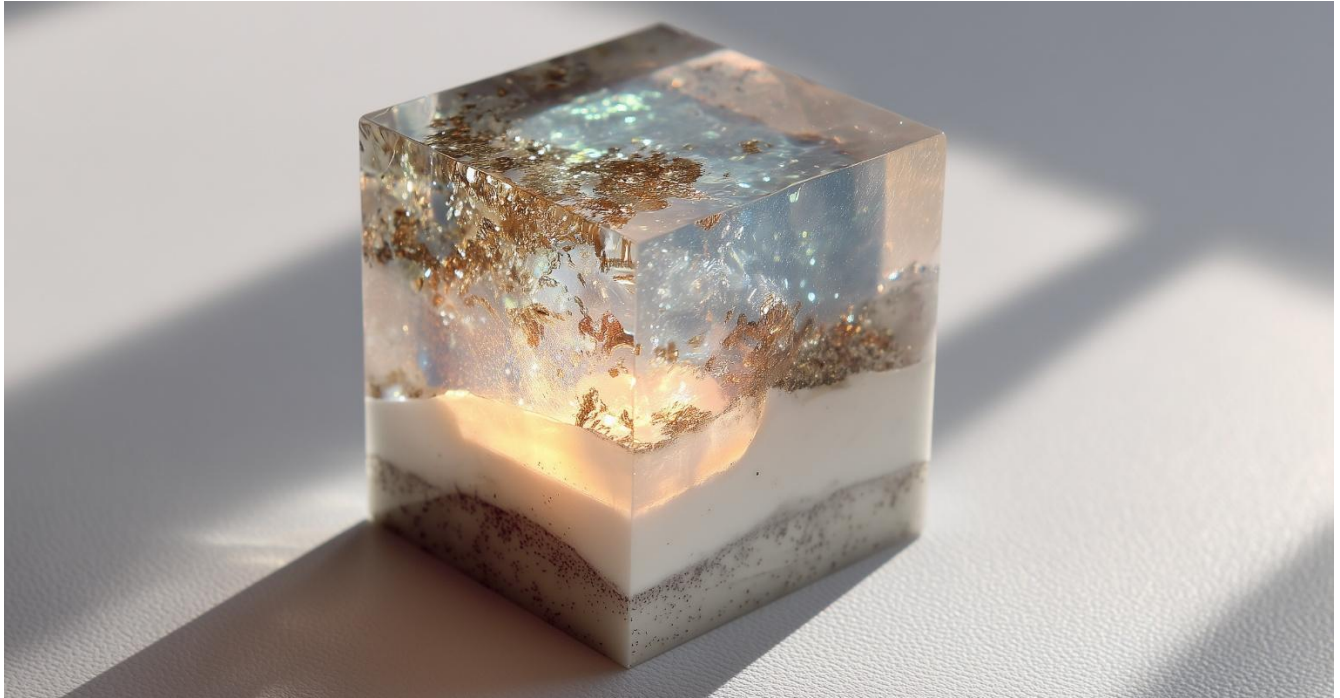
Try embedding small LED fairy lights or metallic flakes in one layer to create a stunning illuminated version. When displayed near a window or light source, the reflections add motion and brilliance to your floating art piece.

TROUBLESHOOTING

If objects sink, the first layer was too soft. Allow more curing time before embedding. If bubbles appear around items, dip them briefly in resin before placement to create a thin seal.

CHAPTER 6 STATEMENT PIECES & ILLUMINATION

EPOXY RESIN NIGHT LIGHT CUBE



This project transforms a simple block of resin into a glowing piece of art. The Epoxy Resin Night Light Cube captures the serene beauty of softly illuminated resin layers, combining transparent depth with subtle shimmer. The result is a small light sculpture that glows warmly in the dark, evoking the feel of starlight trapped inside glass. It makes a beautiful bedside lamp or a soothing night accent for any room. With careful layering and a touch of glow pigment, you will create a cube that seems to hold light within its core.

WHAT YOU'LL NEED:

- Epoxy resin and hardener
- Measuring cups and mixing sticks
- Silicone cube mold (3x3 or 4x4 inch)

- Clear and pearl-white mica powders
- Glow-in-the-dark powder (aqua or soft white)
- Fine holographic glitter (optional)
- LED tealight or mini USB light base
- Heat gun or torch
- Nitrile gloves and protective mask
- Fine-grit sandpaper and soft cloth

STEP-BY-STEP INSTRUCTIONS

1. Prepare Your Workspace

Cover your work area with plastic or parchment paper. Wear gloves and a mask for safety. Place your silicone mold on a level surface. Ensure that the mold is clean and dry. Set up all materials within reach so you can

work efficiently once the resin is mixed.

2. **Mix and Color the Resin**

Follow the manufacturer's instructions to measure and mix the epoxy resin. Stir slowly for at least three minutes until fully blended. Divide the resin into three cups. Tint one cup with pearl-white mica, another with glow powder, and leave the third clear. You may add a small pinch of glitter to the glow mixture for a gentle sparkle effect.

3. **Pour the First Layer**

Begin by pouring the clear resin into the bottom of the mold, filling about one-third of its height. Allow it to settle for a few minutes, then gently pass the heat gun over the surface to remove any bubbles. Let this layer sit for 30–45 minutes until slightly thickened but still tacky.

4. **Build Depth with Light Layers**

Next, pour the pearl-white resin over the first layer. Tilt the mold slightly so the color moves organically, creating light waves and depth. Then, drizzle small streams of the glow resin through the layer, using a stick to draw gentle swirling lines. Avoid overmixing so the colors remain distinct. The glow pigment will create a dreamy, cloud-like luminosity.

5. **Seal and Cure the Cube**

Finish with a thin top layer of clear resin to seal the design. Use the heat gun to remove bubbles and cover the mold to keep dust away. Let the cube cure undisturbed for at least 24 hours at room temperature between 70–75°F.

6. **Demold and Polish**

Once cured, gently remove the cube from the mold. Sand any uneven edges using fine-grit sandpaper. Wipe with a soft cloth to bring out the shine. Place it over a small LED tealight or a USB base, and watch the inner glow come to life.

Pro Tip : For a richer glow, expose the cube to bright light for several minutes before switching off the lights. The internal pigments will absorb energy and release it slowly, creating a calming radiance.

CREATIVE VARIATIONS

Add small decorative inclusions such as translucent beads, metallic flakes, or pressed flowers in the middle layer. You can also use tinted resin instead of glow powder for a soft pastel night-light effect.

TROUBLESHOOTING

If bubbles appear deep inside, you may have mixed too quickly. Stir slowly and warm your resin slightly before pouring. If the glow appears uneven, use more pigment or apply a thin top coat of glow resin after sanding.

HOLOGRAPHIC WALL DISK



This project captures the shimmering dance of color and light through holographic resin art. The Holographic Wall Disk creates a stunning visual effect that shifts and changes as it catches light from different angles. Inspired by modern abstract design, it's perfect as a statement piece for any wall. The play of metallic pigments, holographic foil, and transparent resin gives the illusion of movement and depth, making it feel alive and radiant no matter where it hangs.

WHAT YOU'LL NEED:

- Epoxy resin and hardener
- Round silicone wall art mold (10–12 inches)

- Measuring cups and mixing sticks
- Holographic film or foil flakes
- Silver and pearl white mica powders
- Transparent alcohol inks (blue, violet, teal)
- Heat gun or torch
- Tweezers and small scissors
- Nitrile gloves and protective mask
- Fine-grit sandpaper and soft polishing cloth

STEP-BY-STEP INSTRUCTIONS

1. Prepare and Organize

Protect your workspace with plastic sheeting or parchment paper. Wear gloves and a mask to avoid fumes and skin contact. Make sure the

mold is completely clean and flat. Arrange your materials within reach so you can move quickly once the resin is mixed.

2. **Mix and Tint the Resin**

Measure and mix the epoxy resin carefully, following the manufacturer's ratio. Stir slowly for three minutes to reduce bubbles. Divide the resin into three small cups. Tint one with silver mica, one with pearl white, and one with a drop of blue alcohol ink. Keep one small portion clear for layering later.

3. **Create the Base Design**

Pour the silver resin first to form the base layer. Add irregular pools of pearl white resin over it. Use a stick to gently swirl the two colors, creating a soft metallic marbling effect. Do not overmix. Let this layer rest for 10–15 minutes until it thickens slightly.

4. **Add the Holographic Layer**

Cut small sections of holographic film or foil and place them randomly on the semi-cured resin using tweezers. Gently press them down so they adhere without trapping air. Pour a thin layer of clear resin over the top to seal them. The clear layer enhances the reflective surface, creating the illusion of shifting light within the piece.

5. **Introduce Color Accents**

Using the tinted blue resin, add soft streaks around the edges to frame the holographic center. Tilt the mold slightly to allow gentle blending. You can add a drop of violet or teal ink for extra dimension. Use a heat gun to remove bubbles and smooth transitions between colors.

6. **Cure and Finish**

Let the disk cure on a level surface for at least 24 hours. Once hardened, remove it carefully from the mold. Sand the edges lightly with fine-grit sandpaper if needed. Polish the front with a soft cloth to bring out the shine. Attach a wall hook or adhesive disc to the back for easy display.

Pro Tip : To intensify the holographic shimmer, angle a small spotlight or LED light toward the finished piece. The shifting rainbow effect becomes far more vivid when illuminated from one side.

CREATIVE VARIATIONS

Experiment with metallic gold or rose gold pigments instead of silver for a warmer tone. You can also create smaller matching disks to hang in a set for a cohesive wall display.

TROUBLESHOOTING

If air pockets form beneath the foil, you may have pressed too hard. Use minimal pressure and ensure the foil sits flat before pouring the clear layer.

GALAXY-INSPIRED JEWELRY HOLDER



This project transforms a simple jewelry holder into a celestial showpiece inspired by the shimmering expanse of outer space. The Galaxy-Inspired Jewelry Holder captures the swirling beauty of distant galaxies with layers of metallic pigments, glow powder, and star-like glitter. Each ring or earring placed on it seems to rest upon a miniature universe. This piece is both functional and artistic, making it a stunning addition to any vanity or dresser.

WHAT YOU'LL NEED:

- Epoxy resin and hardener
- Measuring cups and mixing sticks

- Silicone mold for jewelry holder (dish or cone shape)
- Deep black, indigo blue, and violet mica powders
- Fine silver and holographic glitter
- Glow-in-the-dark pigment (blue or aqua)
- Small disposable cups for tinting
- Heat gun or torch
- Nitrile gloves and protective mask
- Sandpaper (fine grit) and polishing cloth

STEP-BY-STEP INSTRUCTIONS

1. Prepare Your Workspace

Cover your working surface with plastic or parchment paper to catch

any spills. Wear nitrile gloves and a protective mask. Ensure your mold is completely clean and dry. Place it on a level table to allow even curing.

2. **Mix and Tint the Resin**

Measure and mix your epoxy resin according to the manufacturer's ratio. Stir slowly for about three minutes to avoid introducing air bubbles. Divide the resin into four small cups. Tint one cup with black mica, one with blue, one with violet, and one with glow pigment. Add a small pinch of silver glitter to each cup to simulate starlight.

3. **Pour the Galactic Layers**

Begin by pouring the black resin as your base layer. Then add small ribbons of blue and violet resin in swirling motions. Lightly drag a wooden stick or silicone tool through the surface to create soft nebula patterns. Avoid overmixing to maintain visible separation between colors. Drop a few dots of glow resin for star clusters that shine in the dark.

4. **Add Depth with a Clear Layer**

Once the colored resin has begun to thicken slightly, pour a thin layer of clear resin on top. This creates visual depth and enhances the illusion of floating galaxies. Sprinkle a small amount of holographic glitter to mimic scattered stardust across the cosmic surface.

5. **Remove Bubbles and Let Cure**

Pass a heat gun quickly over the surface to remove bubbles. Keep the heat moving to prevent overheating. Cover the mold with a clean box or lid to protect it from dust. Allow the resin to cure for 24 hours at a consistent temperature between 70–75°F.

6. **Demold and Finish**

Carefully remove the piece from the mold once it is fully cured. If the edges feel rough, smooth them with fine-grit sandpaper. Use a soft polishing cloth to restore the high-gloss finish. The result should look like a pocket-sized galaxy shimmering beneath glass.

Pro Tip : Charge the jewelry holder under bright light before switching off the lamps. The glow pigment will radiate softly, revealing hidden cosmic swirls that appear alive in the dark.

CREATIVE VARIATIONS

For a more dramatic design, embed small metallic flakes, crystal chips, or tiny holographic stars in the top layer. You can also pour the resin into smaller ring dishes or earring trays using the same galaxy technique for a coordinated celestial collection.

TROUBLESHOOTING

If your pigments blend too much, you may have stirred too vigorously. Use slow movements when swirling. If your surface appears cloudy, add a very thin coat of clear resin and let it cure again.

EPOXY & GLASS FUSION VASE BASE



This project blends the clarity of resin with the reflective beauty of glass to create a sophisticated vase base that sparkles like frozen water. The Epoxy & Glass Fusion Vase Base is inspired by the interplay of transparency and light. It captures the appearance of fractured glass sealed within crystal-clear resin, giving your finished piece a luxurious and modern touch. Perfect for holding candles, dried flowers, or as a standalone centerpiece, this project demonstrates how resin can transform ordinary materials into a statement of elegance.

WHAT YOU'LL NEED:

- Epoxy resin and hardener

- Measuring cups and mixing sticks
- Silicone cylinder mold (vase or base shape)
- Crushed tempered glass or decorative glass chips
- Clear and white mica powders
- Silver metallic flakes
- Heat gun or torch
- Tweezers and stirring sticks
- Nitrile gloves and protective mask
- Sandpaper (400–1000 grit)
- Polishing compound or resin topcoat

STEP-BY-STEP INSTRUCTIONS

1. **Prepare and Protect Your Workspace**

Cover your surface with plastic sheeting or parchment paper to prevent damage from spills. Wear **nitrile gloves** and a **protective mask** for safety. Ensure the silicone mold is clean, dry, and free of dust. Place it on a perfectly level surface to ensure even curing. Keep your crushed glass pieces within easy reach before you begin pouring.

2. **Mix and Tint the Resin**

Measure equal parts of epoxy resin and hardener according to the manufacturer's instructions. Stir slowly for at least three minutes to avoid creating bubbles. Pour a small portion of the mixed resin into a separate cup and tint it with a small amount of white mica powder to achieve a frosted, milky hue. Leave the rest of the resin clear. The contrast between tinted and clear resin enhances the illusion of frozen glass.

3. **Create the Glass Fusion Layer**

Pour a thin layer of clear resin into the mold. Gently add a handful of crushed glass pieces, spacing them evenly. Use tweezers to adjust the placement so they do not clump together. Pour a second layer of the white-tinted resin over the glass, just enough to cover it. This layering captures the shimmer and refraction of the glass, creating a fusion effect that looks both natural and deliberate.

4. **Add Depth and Metallic Highlights**

Once the resin begins to thicken slightly, sprinkle small amounts of silver flakes between layers. They

will catch the light beautifully after curing. Alternate layers of glass, silver flakes, and clear resin until you reach your desired height. Avoid overfilling the mold. Use the heat gun to remove any visible bubbles between pours, keeping the heat moving gently over the surface.

5. **Cure, Demold, and Finish**

Allow the piece to cure for 24 to 48 hours in a dust-free environment at 70–75°F. Once hardened, carefully demold the vase base. If the edges feel rough, smooth them with fine-grit sandpaper, moving gradually from 400 to 1000 grit. For a glossy finish, apply a thin coat of clear resin or use a polishing compound to bring out the glassy luster.

Pro Tip : For a dramatic light-catching effect, position your finished base near a window or under a small LED light. The trapped glass will sparkle with every shift of light, giving the illusion of frozen motion.

CREATIVE VARIATIONS

Try using tinted glass pieces or colored resin layers to create a stained-glass look. Adding gold flakes instead of silver gives a warmer, vintage appearance perfect for autumn or candle-lit settings.

TROUBLESHOOTING

If air bubbles form around the glass, you may have poured too quickly. Next time, pour in thinner layers and use gentle heat after each pour. For cloudy spots, apply a fresh topcoat of clear resin to restore full clarity.

CUSTOM RESIN TABLETOP INSERT



This project transforms a simple tabletop into a show-stopping centerpiece. The Custom Resin Tabletop Insert combines the warmth of natural wood with the luminous depth of epoxy resin. By pouring tinted resin into carved or bordered sections, you can create stunning river-like designs, metallic marbling, or subtle ocean waves beneath a glassy surface. Each tabletop becomes a one-of-a-kind functional artwork that elevates any space. The result is durable, heat-resistant, and endlessly customizable to match your home's aesthetic.

WHAT YOU'LL NEED:

- Epoxy resin and hardener
- Mixing cups and wooden stir sticks

- Painter's tape and plastic sheeting
- Pre-cut wooden tabletop with recessed section or border
- Wood sealant or primer
- Pigment paste or mica powder (two or more colors)
- Metallic flakes or alcohol inks (optional)
- Heat gun or torch
- Leveling tool
- Fine-grit sandpaper and polishing compound
- Nitrile gloves and protective mask

STEP-BY-STEP INSTRUCTIONS

1. Prepare the Table Surface

Clean your tabletop thoroughly and ensure it is completely dry. If you are working with raw wood, seal it

with a thin coat of clear resin or wood primer to prevent air bubbles from escaping into the final pour. Mask off the edges and underside with painter's tape to catch drips. Place the table on a level surface to guarantee even curing.

2. **Mix the Resin and Choose Your Colors**

Measure your resin and hardener carefully following the manufacturer's ratio. Mix slowly for three minutes to reduce bubbles. Divide the resin into separate cups depending on how many colors you plan to use. Add pigment paste, mica powder, or alcohol ink to each portion. Stir until fully blended and vibrant. Leave one portion clear if you want depth between layers.

3. **Pour and Design Your Insert**

Slowly pour the resin into the recessed section of the table, beginning with your base color. Add the secondary color or metallic pigment in ribbons or swirls. Use a stick or stir tool to guide the flow of resin without overmixing. The natural movement of the material will create organic lines and patterns that mimic water, marble, or stone.

4. **Add Effects and Build Layers**

To enhance the design, add a few metallic flakes or drops of contrasting pigment once the first layer begins to set. If your tabletop is deep, pour in two or three stages, allowing each layer to partially cure before adding the next. This creates visual depth and prevents overheating.

5. **Remove Bubbles and Let It Cure**

Use a heat gun lightly across the surface to remove bubbles. Keep the heat moving constantly to avoid scorching. Cover the table with a box or plastic sheet to protect it from dust. Let it cure undisturbed for at least 24 hours, or longer if your pour is thick.

6. **Sand and Polish the Surface**

Once cured, inspect the surface for any uneven areas. Lightly sand with fine-grit sandpaper until smooth. Wipe away dust, then apply a thin finishing layer of clear resin or polish with a soft cloth for a high-gloss finish.

Pro Tip : For a sophisticated look, blend a small amount of metallic gold or silver pigment into the clear resin layer. The subtle shimmer will catch the light beautifully without overpowering the wood's texture.

CREATIVE VARIATIONS

Try embedding small decorative items such as dried leaves, shells, or colored stones in the first resin layer. You can also use tinted resin in ocean blues or emerald greens for a modern "river table" appearance that feels both natural and luxurious.

TROUBLESHOOTING

If you notice cloudy spots, it may indicate moisture or unsealed wood. Always seal porous materials before your main pour. Uneven curing can result from cold temperatures, so keep the workspace between 70–75°F for best results

