

Wisam Gibran

# Peccadillo 3

For Piano solo

2023



Gibran Academy of Music Publisher – Nazareth

© All Copyright rights reserved to Gibran Academy of Music publishing and author.

No part of this publication may be reproduced or distributed in any form or by any means, or stored in a data base or retrieval system, without the prior written permission of the publisher

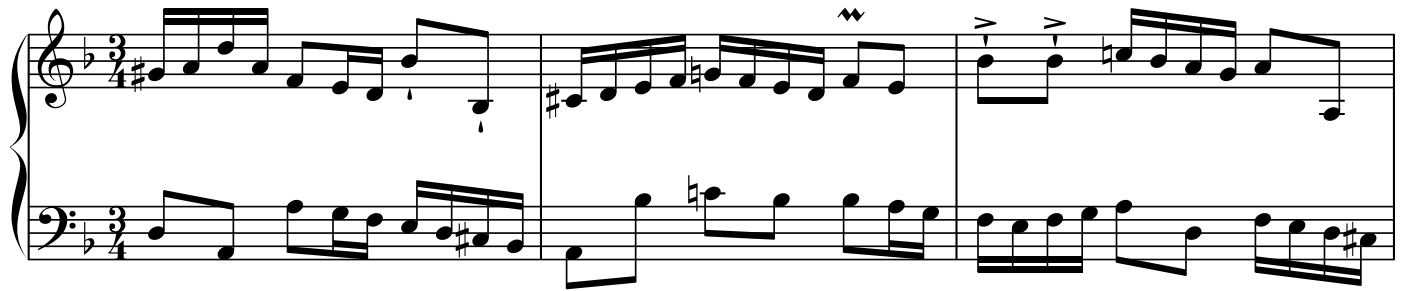
# Peccadillo 3

هفوة 3

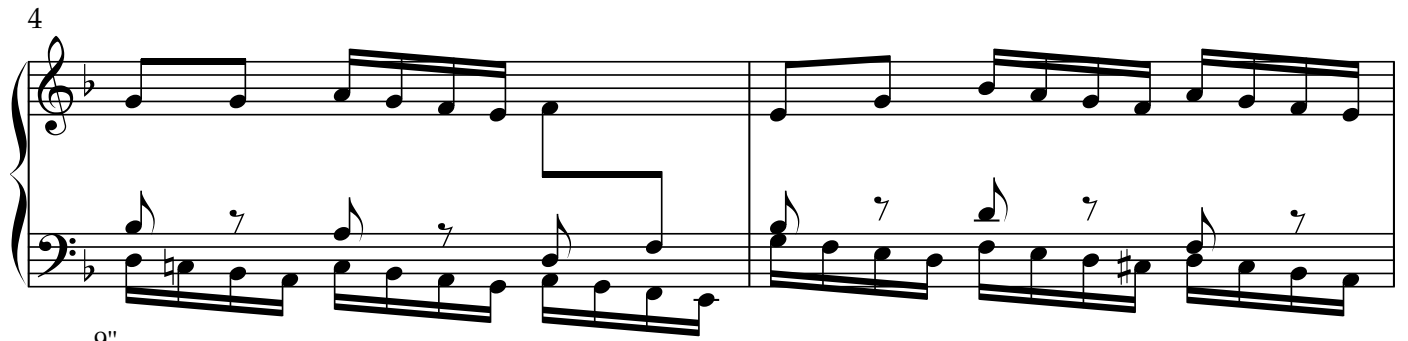
Nazareth, 18 Oktober 2003

Wisam Gibran

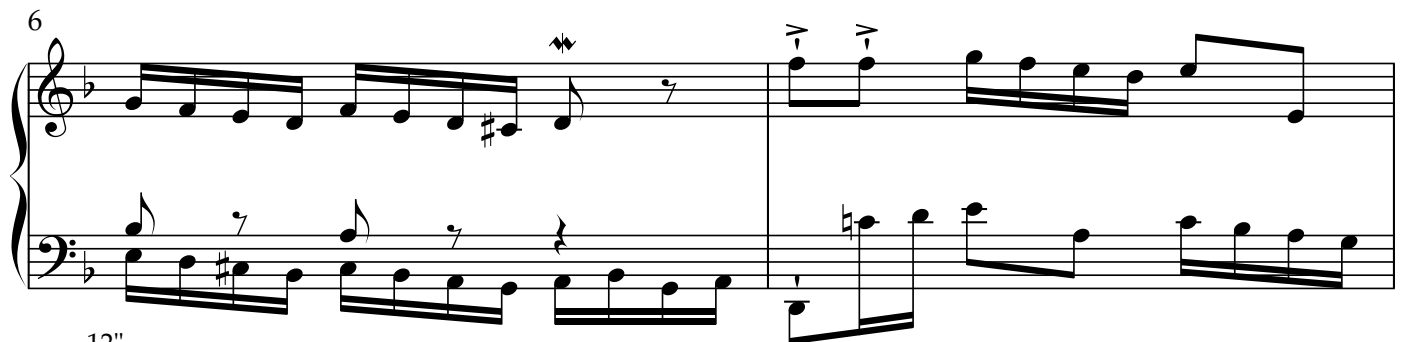
0" Incandescente بتوهج



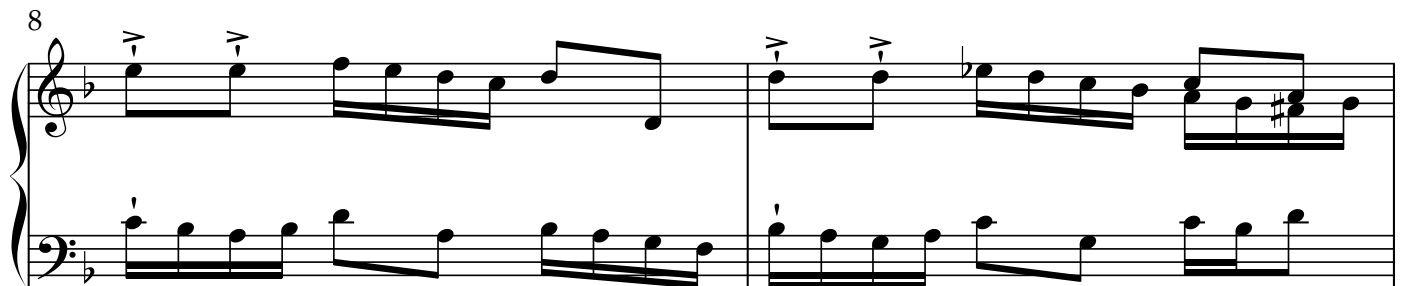
5"



9"



12"



8

16"

10

Measures 10 and 11 of a piano piece. Measure 10 features a treble staff with eighth-note runs and a bass staff with a steady eighth-note accompaniment. Measure 11 continues the treble staff's melodic line with a trill and a half-note, while the bass staff has a half-note. The key signature has two flats, and the time signature is 4/4.

20"

12

Measures 12, 13, and 14. Measure 12 has a treble staff with eighth-note runs and a bass staff with eighth-note accompaniment. Measure 13 continues the treble staff's melodic line with a trill and a half-note, while the bass staff has a half-note. Measure 14 features a treble staff with eighth-note runs and a bass staff with eighth-note accompaniment. The key signature has two flats, and the time signature is 4/4.

25"

15

Measures 15 and 16. Measure 15 features a treble staff with eighth-note runs and a bass staff with eighth-note accompaniment. Measure 16 continues the treble staff's melodic line with a trill and a half-note, while the bass staff has a half-note. The key signature has two flats, and the time signature is 4/4.

29"

17

Measures 17 and 18. Measure 17 features a treble staff with eighth-note runs and a bass staff with eighth-note accompaniment. Measure 18 continues the treble staff's melodic line with a trill and a half-note, while the bass staff has a half-note. The key signature has two flats, and the time signature is 4/4.

32"

19

Measures 19 and 20. Measure 19 features a treble staff with eighth-note runs and a bass staff with eighth-note accompaniment. Measure 20 continues the treble staff's melodic line with a trill and a half-note, while the bass staff has a half-note. The key signature has two flats, and the time signature is 4/4.

36"

21

Two staves of music. The treble staff contains eighth and sixteenth notes with various accidentals. The bass staff contains a steady eighth-note accompaniment.

39"

23

Two staves of music. The treble staff features more complex rhythmic patterns with sixteenth notes. The bass staff continues with eighth-note accompaniment.

43"

25

Two staves of music. The treble staff has a series of chords and moving lines. The bass staff has eighth-note accompaniment. Measure 27 ends with a fermata and a final note marked with a 'v'.

48"

28

Two staves of music. The treble staff continues with complex patterns. The bass staff has eighth-note accompaniment. Measure 30 ends with a fermata and a final note marked with a 'v'.

54"

31

Two staves of music. The treble staff features a series of chords and moving lines. The bass staff has eighth-note accompaniment.

59"

34

Measures 34-36 of a musical score in B-flat major. The treble clef staff contains eighth-note and sixteenth-note patterns, while the bass clef staff features a steady eighth-note accompaniment. Measure 36 ends with a double bar line and a repeat sign.

1'05"

37

Measures 37-39 of a musical score in B-flat major. The treble clef staff continues with eighth-note and sixteenth-note patterns, and the bass clef staff maintains the eighth-note accompaniment. Measure 39 ends with a double bar line and a repeat sign.

1'10"

40 **rit.**

Measures 40-42 of a musical score in B-flat major. Measure 40 is marked with a dashed line and the tempo instruction "rit.". The treble clef staff features a melodic line with eighth notes and a half note. The bass clef staff has a steady eighth-note accompaniment. Measure 42 ends with a double bar line and a repeat sign.