

West Texas Archeological Society

P.O. Box 183 Iraan, Texas 79744-0183

wtas.archeology@gmail.com

westtexasarcheologicalsociety.website

President: Tom Ashmore, Vice President: C.A. Maedgen, Treasurer: James Michael Collett

(Feel free to pass on to friends. Membership is free. 104 members and growing!)

Newsletter & Website editor: Tom Ashmore

February 2025

We are very close to releasing our 2025 update report on Camp Meyers Spring. It covers over two years of fieldwork and is 90 pages. This will be a special edition for the Southwest Federation of Archeological Societies. I presented at the 2024 symposium, but the report is too large for the Transactions report released recently. This will ensure the report is available on the 'Portal To Texas History,' sponsored by the University of North Texas. It will also be available on our website and in many libraries and archival centers around West Texas.

Horsehead Crossing, Goodnight-Loving Trail Website

There is a new website to visit and get your updated information. I will collaborate with the webmaster to include some of our work. They will update it as they receive new information on this year's event.

<https://horseheadcrossinggoodnightlovingtrail.com/>

Fort Clark Historical Society Presentation

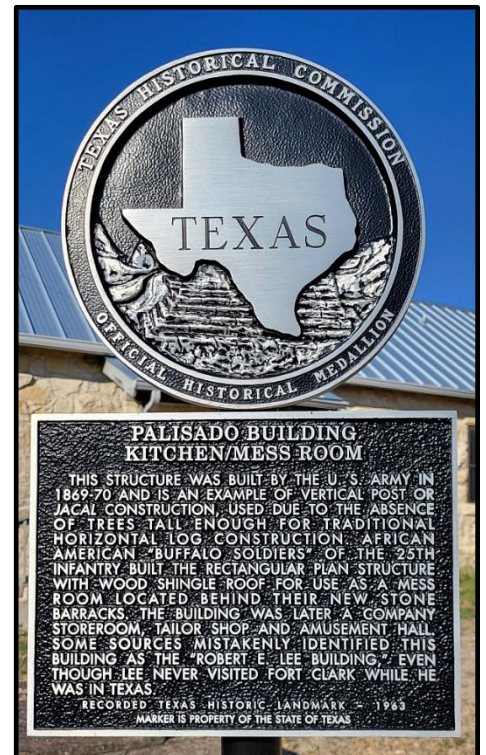
I will present on Camp Meyers Spring for the Fort Clark Historical Society at 9:30 a.m. Saturday, February 22nd. The presentation will be held in the Fort Clark Palisado building meeting hall. The building's history is in the attached photo.

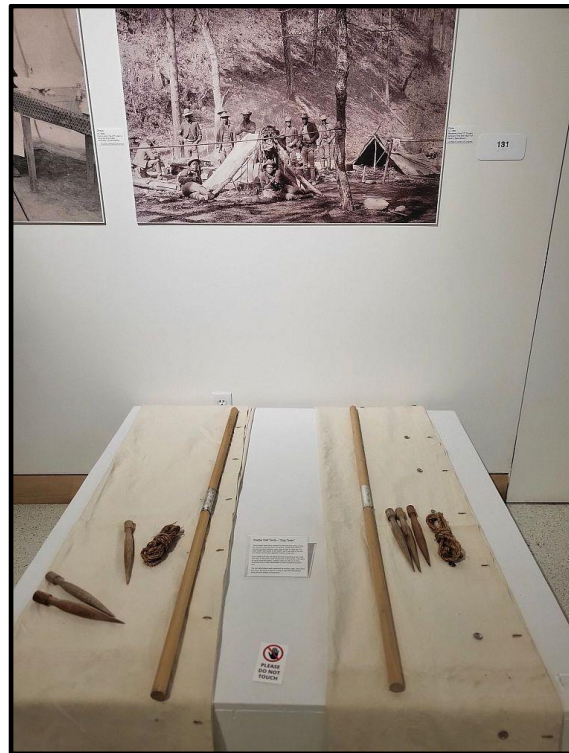
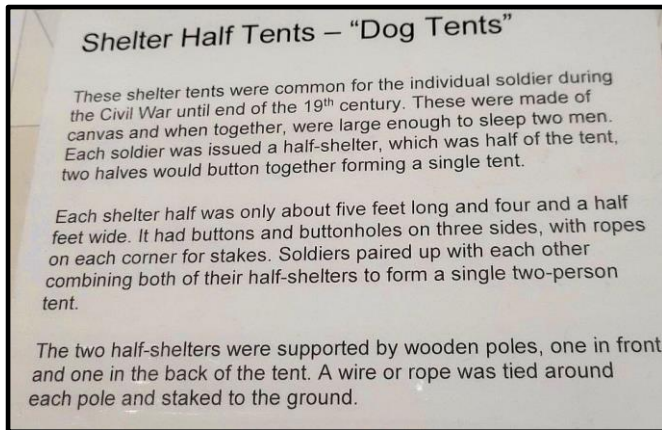


SPECIAL EDITION OF TRANSACTIONS OF
THE 58TH REGIONAL ARCHAEOLOGICAL
SYMPOSIUM
FOR SOUTHEASTERN NEW MEXICO
AND
WESTERN TEXAS

Camp Meyers Spring (41TE724)

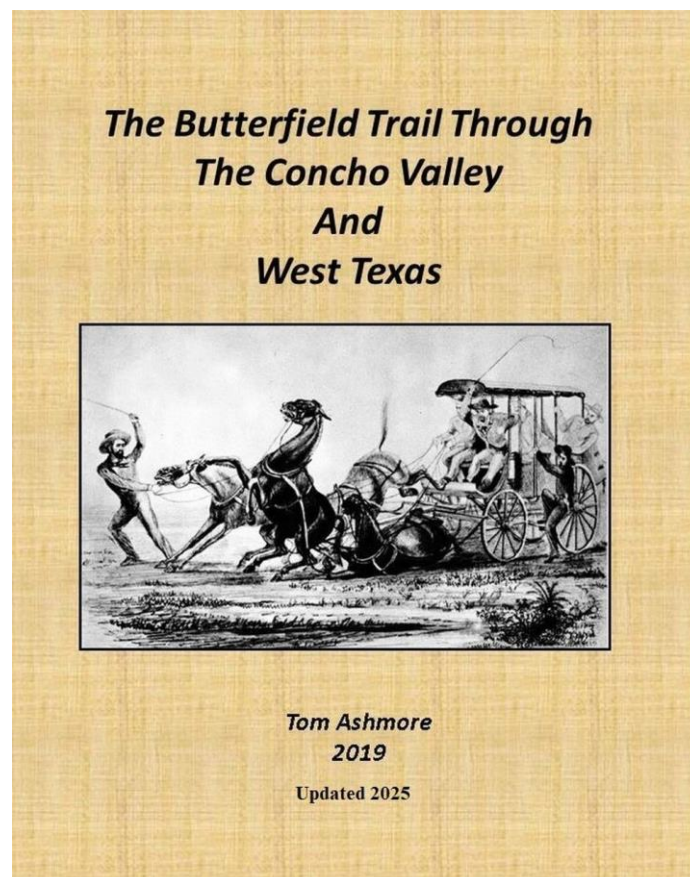
West Texas Archeological Society
(2025 update)





Courtesy of Fort Concho National Historic Site and Museum

Download the updated book from our website.
<https://westtexasarcheologicalsociety.website/>



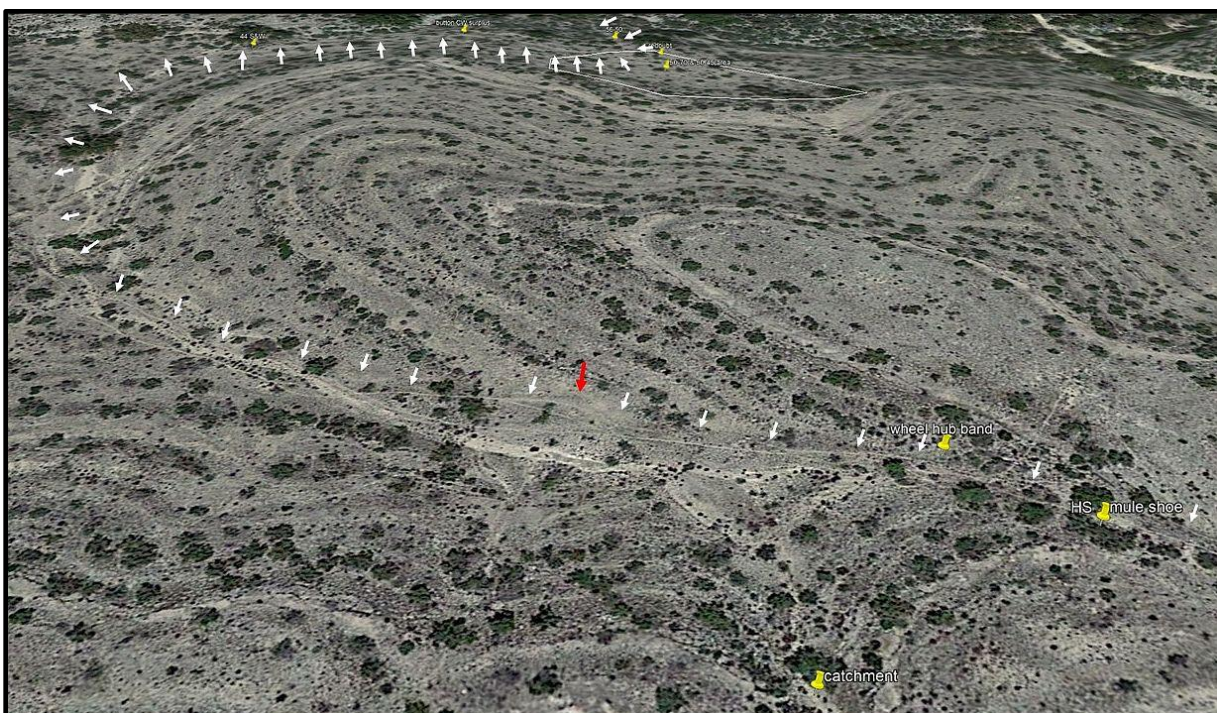
Historical Archeology

Historical archeology differs from traditional in many ways. Instead of a matrix of squares and going down in the soil in increments to determine layers of artifacts and strata in time, we cover large areas in a reconnaissance methodology. Usually, we know the general timeframe we are looking at from historical research and surface finds. What is beneath the ground is usually metal, and metal detection is the technique used to find them. Pinpointing where these items are found helps to develop a pattern to tell a story of just what happened at whatever site we are working. Here is an example from our last site visit to Camp Meyers Spring.

An initial recon indicated a string of artifacts that appeared to be a temporary camping area and a potential wagon road. Because of limited time, seven of us spread out and searched a draw covering about three acres, with myself acting as the recorder, pinpointing every artifact. In addition to finding many items representing camping occupation, we found this one particular large round iron band. I had an idea of what it was, but I took it for research. It turns out to be a hand-forged wagon wheel hub band. And it was directly on what we thought was a wagon road. Here, you can see it as a display for the owner's mini museum.



But that's not where the story ends. Using Google Earth imagery analysis and information derived from a previous reconnaissance on the other side of the mesa that we were working below, we could now determine the entire road, which turns out to be the road used in the 1880s to access through the canyon and down to the famous pictograph site. The current ranch road could not have been the access due to its extreme difficulty. For two years, we had been trying to determine how wagons could access this very inaccessible site, and finally, we found it. The red arrow indicates where we found the wheel hub band.



Upcoming Events

Feb 20/21 (Thu/Fri): Camp Shumla Field Reconnaissance: We will arrive Thursday afternoon and RV camp on the property. WTAS members who wish to assist on Friday need to contact me directly for entry location and time. (tcashmo@gmail.com) This will be a locked gate entry, with only one time in and one time out. The property is flat scrub, and we will cover about six acres. This will be surface search, metal detecting, and GPSing targets. This property is approximately 8 miles from Seminole Canyon State Park and 17 miles from Comstock. Time in will be 8:30 a.m. The progress of the reconnaissance will determine time out.

March 13 – 16 (Thu – Sun): Meyers Spring Ranch: We will arrive Thursday afternoon and depart Sunday morning. WTAS members who wish to assist need to contact me directly for entry location and time. (tcashmo@gmail.com). This will also be a locked gate entry, and we must have only one time in and one time out. Due to the difficulty of getting into this remote property, anyone joining needs to plan on the entire time from Thursday to Sunday. Group bunkhouse cabins are available: bring personal sleeping bags, snacks, food, etc. Two target areas are planned. Both are easy scrub area access from ranch roads. One area is the return to the area described in the article above. This will be surface search, metal detecting, and GPSing targets.

Donations: As you know, we are not charging for membership, presentations, or any work we do on the various projects. We do it because we love it and believe that history needs to be preserved accurately. If you would like to donate to our efforts, please make out checks to IAS. We need to maintain that banking deposit identity under grandfathered banking rules.

Mail any donation checks made out to IAS to:

West Texas Archeological Society
P.O. Box 183
Iraan, TX 79744

West Texas Archeological Society Membership Form

Name: _____

Mailing Address: _____

e-mail address: _____
(You will receive the newsletter via e-mail)

Cell: _____

No dues membership. Pass it on.

Mail form to: West Texas Archeological Society
P.O. Box 183, Iraan, TX 79744
Or go to the website to download and email the form.