



NEWS FROM THE MARGINS

LGBTQ+/GENDER & REPRODUCTIVE JUSTICE NEWSLETTER

TERRY KINSEY HONORED WITH FOUNDERS AT OPALGA+ GALA

Terry Kinsey is a lifelong social justice advocate with a powerful focus on LGBTQ+ rights. At Unity Temple, he helped establish both the Rainbow Connection Support Group and the LGBTQ+/Gender & Reproductive Justice Team, creating vital support systems for the community. Beyond formal organizations, he has actively protested discriminatory policies, notably those preventing gay men from donating blood.

When those policies changed, he celebrated by organizing inclusive blood drives with OPALGA+ and Unity Temple. Kinsey's commitment is also reflected in his volunteer work with countless organizations, including TaskForce Prevention and Community Services and the Youth Empower Performance Project (YEPP), which provide essential support to LGBTQ+ youth.

Terry embodies the spirit of "service is our prayer" and we are all so proud of everything he's accomplished!



UTUUC BI-ANNUAL BLOOD DRIVE

Thanks to all who participated in the Sept. 27th blood drive. We had 27 people attend and collected 23 units of blood. 23 units of blood can assist about 69 people as one unit of blood can save up to three lives. This is the 4th blood drive which was initiated by the LGBTQ+/Gender & Reproductive Justice Team to celebrate the end of the discriminatory practices by the FDA against gay men donating blood which ended in 2023. The next drive will be Saturday, March 28, 2026 at Unity Temple's Community Center 1019 South Blvd.

ILLINOIS WOMAN DENIED TREATMENT FOR ECTOPIC PREGNANCY

Even living in a pro-choice state like Illinois doesn't necessarily protect people from conservative abortion policies.

According to the "Abortion, Every Day" Substack, published Oct. 14, Harmonie, a 28-year-old Illinois woman was denied emergency treatment and had to go to multiple healthcare centers and hospitals before she got the care she needed.

She later learned her OBGYN was anti-abortion and the health system with which he was affiliated previously violated the Emergency Medical Treatment & Labor Act for refusing a Texas woman care for her ectopic pregnancy in 2023.

LGBTQ+

Several members of UTUUC attended the Task Force "Vogue For Good" charity fund raiser Thursday, October 9, 2025. Taskforce provides preventative healthcare in the Austin neighborhood. Learn more [here](#)

GENDER

Thursday November 20th is Transgender Day of Remembrance. This is a day to remember those who are no longer with us due to the systemic oppression and violence perpetrated against the Trans community.

REPRODUCTIVE

International Day for the Elimination of Violence against Women is the 25 November. We must continue to fight for the safe and violence free existence of women. Read more [here](#).

HOW TO GET INVOLVED



To find out more about becoming a clinic escort contact LGBTQGenderReproductive@unitytemple.org

Families with Gender Diverse Children

During the school months September through May, this support group for all members of families with gender diverse kids meets the first Sunday monthly in Oak Park. Format is informal conversations and connection. This is a family friendly event with nut free snacks and a playroom for children. For details about meetings, contact: familysupport@unitytemple.org.

Monthly Leadership Committee Meetings

Want to join the team? The next committee meetings will be held Nov. 11th and Dec. 9th at 4pm using this [Zoom link](#).

Email us at: LGBTQGenderReproductive@UnityTemple.org

FAKE CLINIC! FAKE ABORTION CLINIC MOVED FROM BERWYN TO OP IN MAY

Unfortunately, a crisis pregnancy center has recently opened on Harlem Ave. in Oak Park.

What is a crisis pregnancy center and why do they pose a public health concern?

Crisis pregnancy centers (CPCs) are anti-abortion organizations that exist to intercept non-profit organizations that aim to reach people seeking reproductive healthcare to deter them from accessing abortions and contraception (birth control) and discourage them from having sex before marriage. The centers often try to look like health facilities, even though they are largely unregulated, typically are not staffed by licensed clinicians, and not bound by HIPAA privacy laws.

Many years of research and investigative reporting have shown that CPCs spread harmful disinformation and pose serious public health risks by delaying access to real medical care.

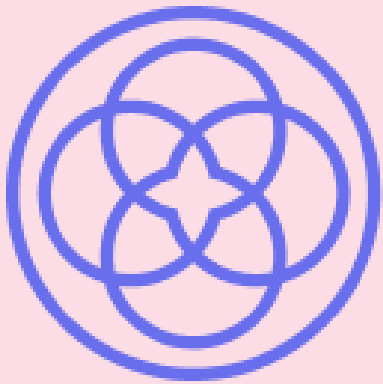
Typical misinformation spread by crisis pregnancy centers include "abortion pill reversal" which is not supported by medical research, and false claims that abortion causes mental illness and breast cancer.

CPCs particularly target:

- Young people, especially students
- People of color
- People with low incomes

Potential harms to clients caused by CPCs and their lack of regulation:

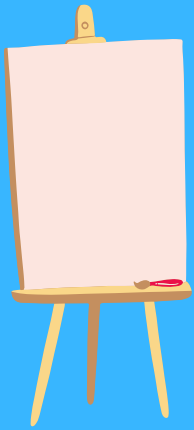
- Negative health outcomes
- Delayed healthcare
- Not getting the healthcare they want and need
- Missed opportunities for prevention and treatment services
- Stigma
- Mistrust of medical providers
- Loss of confidentiality and security of private information
- Criminalization
- Adverse economic outcomes



RELIGIOUS COMMUNITY *for* REPRODUCTIVE CHOICE

As abortion care becomes more difficult to access, we know that there will be times when people may not have the in-person support they deserve before, during, or after their abortions. That's why we created this site, first and foremost—to accompany people on their abortion journey, no matter where they are in the process. This site is a project of the Religious Community for Reproductive Choice.
<https://abortionswelcome.org/>

CALLING ALL POETS, WRITERS AND ARTISTS!



We welcome submissions of poetry, art, or short essays with a point of view toward social justice issues. Uplifting and intersectional pieces are highly desirable. Those under 35 and/or from marginalized communities are especially encouraged to submit. Please send submissions to LGBTQGenderReproductive@unitytemple.org for consideration.
Deadline for submissions for the January/February 2026 “News from the Margins” newsletter is by December 10.

UPCOMING EVENTS

Fall Luncheon

1019 South Blvd
Thursday, November 13 at 12noon
Phone number
Bring a Dessert to Share!
RSVP to Val Ridenour at:
vridenour@unitytemple.org

Supporting Our Autin Neighbors - Produce

3rd Wednesday of the month packing of 200 brown bags with fresh produce for distribution in the Austin neighborhood partnered with TaskForce Prevention and Community Services. For info:
LGBTQGenderReproductive@unitytemple.org

LGBTQ, GENDER AND REPRODUCTIVE AWARENESS DAYS

NOVEMBER

Nov 6 - National Ladies Learning Code Day in Canada
Nov 22 - Billie Jean King Day
Nov 19 - Women Entrepreneurs Day
Nov 25 - Dec 12 - 18-Day Campaign to End Violence Against Women

DECEMBER

Dec 1 - National Women Support Women Day
Dec 1 - Rosa Parks Day:
Read and share [Rosa Parks' most inspiring quotes](#)
Dec 6 - National Day of Remembrance and Action on Violence Against Women
Dec 17 - International Day to End Violence Against Sex Workers

UNITARIAN PERSON OF INTEREST



Margaret Fuller (1810-1850) one of the most important American feminists of her day, was a philosopher, journalist, literary critic and editor. She belonged to the New England community of transcendentalists that included Ralph Waldo Emerson and Henry David Thoreau. Unable to attend Harvard Divinity School because women were not permitted, Fuller created a space where women could discuss ethics, education, theology, fine arts, classical mythology and feminist themes. She supported herself for a time from income generated through these salons and was therefore able to write. Her most important written work is *Woman in the Nineteenth Century* (1845). In the early 2000s the Central Midwest District (now the MidAmerica District) UU Women's Connection embarked on "Margaret Fuller Conversation Salons" based on Fuller's example of pressing ourselves to think more deeply about issues. Margaret Fuller was an accomplished Unitarian who influenced the Unitarian movement far more than we have given her credit for, according to Kimberly French in a 2010 UU World editorial.

As Girl

By Annie Wenstrup

At six being a girl meant Tinkerbell
 nail polish and pointed, pink Barbie
 shoes.
 Sequined fairy wands and slippers
 that fell
 off my feet when I ran. Outside the
 blue
 sky a backdrop for green grass, the
 sweet
 gum tree that was home base.
 Everything caught
 my eye and sparkled. Rain-freshened
 earthworms,
 armored rollie-pollies, and firefly
 dots.
 At night the television played the
 news.
 Its cyclopean eye returned my stare.
 The goat-like pupil reflected a
 parade
 of women and girls like ewes. Fair
 and lovely. I thought they were
 adored.
 Later, I was not a girl anymore.

To learn more about Margaret Fuller check out the resources below:
[Stanford.edu/entries/full-margaret-uua.org/lifespan/curricula/resistance/workshop2/182185.shtml](https://stanford.edu/entries/full-margaret-uua.org/lifespan/curricula/resistance/workshop2/182185.shtml)
uuworld.org/articles/fuller-bicentennial-legacy