

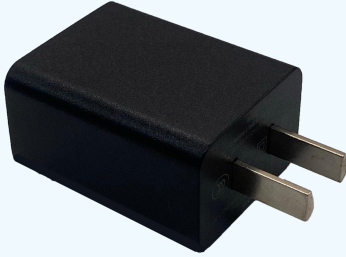
Accessories Brochure

DT50

Enterprise Mobile
Computer



Accessories Overview-1



Adaptor



USB Cable



Battery



Single Charging
Cradle

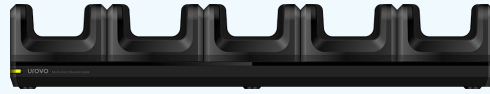


4-Slot Battery
Charging Cradle

Accessories Overview-2



5-Slot Charging Cradle
(4 terminals, 4 batteries)



5-Slot Charging Cradle
(5 terminals)



Trigger Handle



UHF RFID Sled



Optical Fingerprint
Module

Accessories Overview-3



Hand Strap



Screen
Protector



Nylon Holster



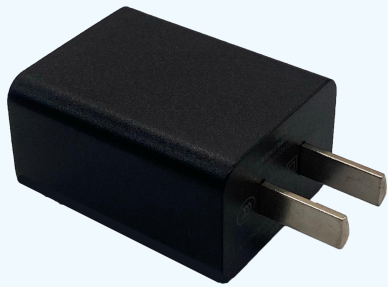
Boot Case



Protective Shell

Accessories List - 1

DT50 Accessories brochure



Adaptor

- Input: 100-240V~50/60Hz 0.6A MAX
- Output: QC3.0 adaptor (5V/3A, 9V/2A, 12V/1.5A)
- Output: 5V/2A (optional)

(Adaptor appearance varies by region)



USB Cable

- Support Charging and Data Transferring
- Port: USB Type-C



Battery

- Removable 3.85V 5000mAh

Accessories List - 2

DT50 Accessories brochure



Single Charging Cradle

Configuration 1

- Support host charging with or without Boot case
- Support Charging One Device and One Battery
- Port: DC Jack for Charging
- LED Charging Status Indicator
- Charging Cradle Adapter Output: 12V/2A

Configuration 2

- Support host charging with or without protective shell
- Support Charging One Device and One Battery
- Port: DC Jack*1, Type-C*1, RJ45*1(for network connection)
- LED Charging Status Indicator
- Charging Cradle Adapter Output: 12V/2A

Accessories List – 3

DT50 Accessories brochure



4-Slot Battery Charging Cradle

- Support Charging 4 Batteries
- LED Charging Status Indicator
- Port: DC Jack for Charging
- Charging Cradle Adapter Output: 12V/5A



5-Slot Charging Cradle (5 terminals)

- Support Charging 5 Devices
- LED Charging Status Indicator
- Port: DC Jack for Charging
- Charging Cradle Adapter Output: 12V/5A



5-Slot Charging Cradle (4 terminals, 4 batteries)

- Support Charging 4 Devices and 4 batteries
- LED Charging Status Indicator
- Port: DC Jack for Charging
- Charging Cradle Adapter Output: 12V/10A

Accessories List - 6

DT50 Accessories brochure



Optical Fingerprint Module

- 360 ° recognition
- Dry/wet, deep/shallow fingerprints identification
- 3D fingerprint imaging
- FIPS-201(PIV) compliance certification from the FBI
- FBI mobile ID FAP20 compliance certification from the FBI
- Live finger detection



Trigger Handle

- Efficient Scanning with Trigger Button
- Comfortable Grip
- Support Single Charging Cradle and 5-Slot Charging Cradle

Accessories List - 7

DT50 Accessories brochure



UHF RFID Sled

- UHF Protocol: EPC Global Class1 Gen2/ISO 18000-6B/6C
- Frequency: 902-928MHz and 865-868MHz
- Reading Range: Up to 8 meters (open environment)
- Group Reading Performance: >200 labels/sec
- Built-in 3000mAh battery
- Type C Port
- Support PSAM, Class A/B/C
- Trigger button *1, Power button *1 (left), Mode button *1 (right)

Accessories List – 8

DT50 Accessories brochure



Hand Strap

- Convenient for mobile operation and carrying



Screen Protector

- Improve protection performance



Nylon Holster

- Individual battery bag
- Comes standard with waist clip and shoulder strap



Boot Case

- Enhance the protection of device
- support hand strap



Protective Shell

- Industrial-class material, support hand strap (Non-standard version)



Urovo

The Smarter The Better