

A Prestigious Project By



PRANAV
DEVELOPERS

Approved by RUDA

TLP No. 1194/0057/LP/RM/2023

PRANAV GRAND VILLAS

Villas | Villas Plots | Independent Houses

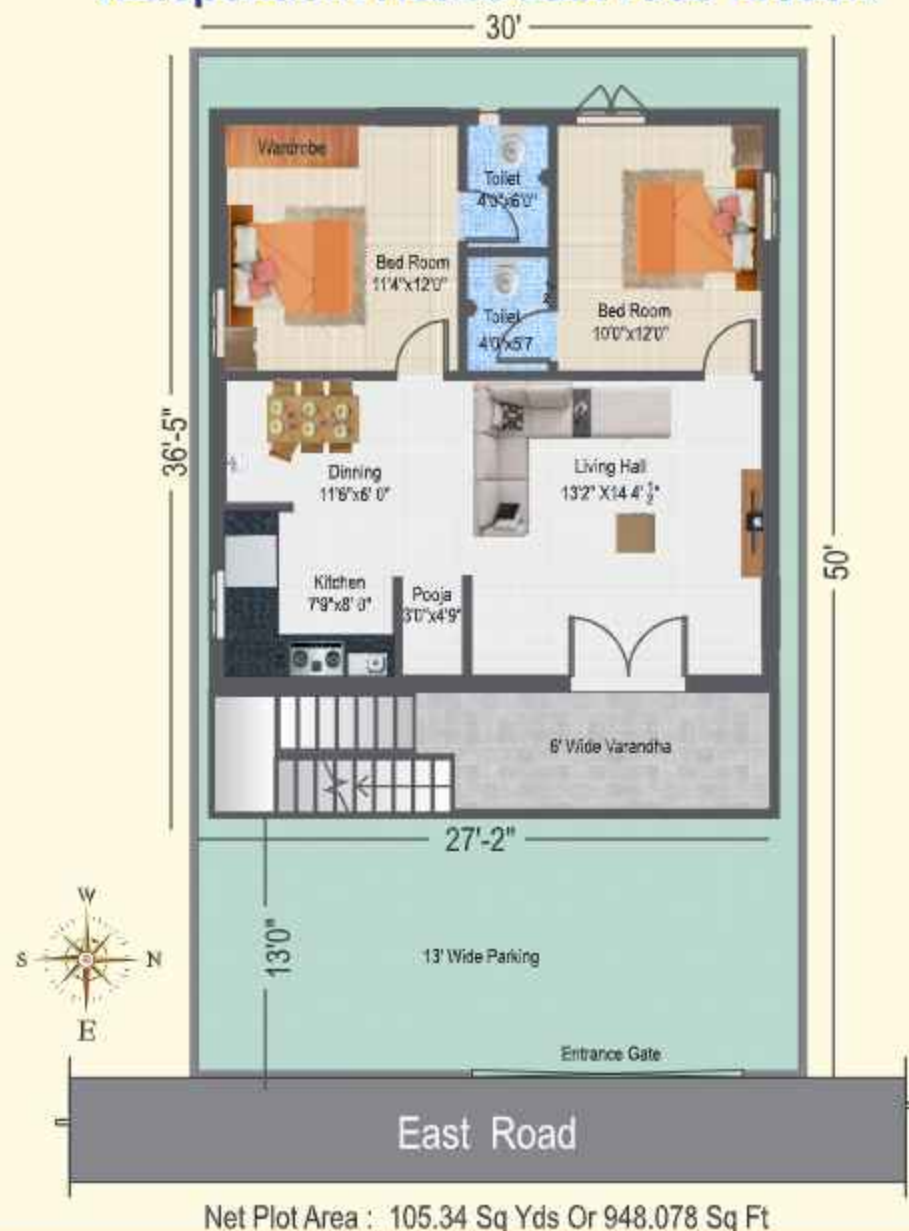
ENTER A WORLD
OF SERENITY



Specifications

| | |
|-------------------------------------|--|
| Foundation & Structure : | RCC Framed Structure with masonry wall steel Managed / Vizag or equivalent. [Cement Nagarjuna / Anjani / Zuari or equivalent] |
| Basement Height : | 3feet From Ground Level [Filled with filling material] |
| Doors & Windows : | Main Door and main window Teakwood frame and shutters with wooden polish and brass fittings and smoke glasses, Bed Room and Remaining Doors and windows country wood Frame with skin panel shutters & windows UPVC. |
| Flooring : | 2 x 2 standard quality vitrified tiles flooring with skirting. a) Toilet flooring with Antiskid tiles b) Dado with glazed tiles up to door level c) Floor mounted E.W.C. and with PVC flush tanks. d) Two white medium size wall mounted wash basins will be provided with necessary fittings one in dining area. e) One head shower provided with wall mixer for each bathroom. f) All water lines with CPVC Pipes. g) All drainage system with SOIR Pipes h) Branded Taps. |
| Painting: | a) Internal Walls: Wall care finish with Emulsion paint over a coat of cement primer (white) - Asian Paints b) External Walls: Emulsion paint over a coat of cement prime (colours by architect-Asian Paints) c) Melamine Polish for main door Enamel Paint for remaining doors and windows. |
| Electrical : | a) Fire resistant PVC insulated copper wire of Anchor or equivalent. b) Modular Electrical Switches of Legrand or equivalent. c) TV, Telephone points in living area A.C. points in bed rooms |
| Kitchen: | Granite kitchen platform with stainless steel sink up to 2' height dado with ceramic designer tiles above platform |
| Loft (Sajja): | One loft will be provided (1 meter width) in the kitchen or toilet. |

Independent House East Face 1058Sft



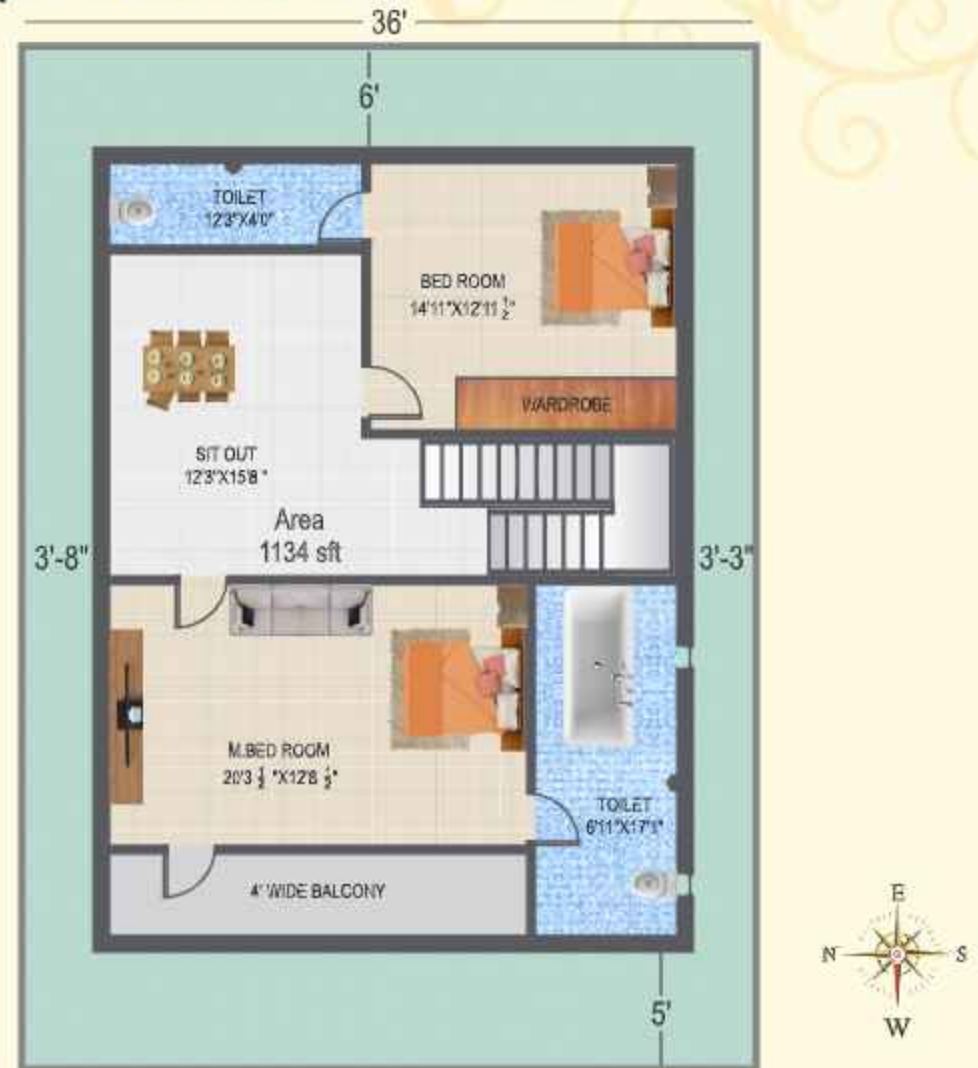
Venture Highlights

| | | | | |
|---------------------------|---------------------------------------|--------------------------------|----------------|-----------------|
| Approved By RUDA | Concrete Drainage | Rain Water Harvesting System | Tennis Court | Gazebo Sit Out |
| 40 Feet Internal CC Roads | Avenue Plantations | Drive Way | Box Cricket | Open Party Lawn |
| Led Street Lights | Open Space with well Development Park | Entry/Exit Gate with Two Archs | Kids Play Area | Walking Track |

West Face Duplex Villa 2268 Sft



Ground Floor : Net Plot Area : 126 Sq Yds Or 1134 Sq Ft



First Floor: Net Plot Area : 126 Sq Yds Or 1134 Sq Ft



