



Psilovibin Nebula – P. Cubensis

Certificate of Analysis
ISO/ IEC 17025 Accreditation # Pending



Order/ Entry #: JULY23
Order Name: Psilovibin
Reporting Name: Psilovibin
Received: July 15th, 2023
Completed: July 21st, 2023

Sample Name: Nebula
Species: P. Cubensis
Cultivar: Nebula
Series/ batch #: n/a
Type: Fruit body

Sample Prep
Date/Time: July 15th, 2023
Analyst: Doma Nunzio
SOP: v1.3
Final Conc./vol: 20mg/ml

Sample Analysis
Date/Time: July 30th, 2023
Analyst: Doma Nunzio
SOP: v1.3
Matrix: Magic Fungi

ANALYTE PROFILE:

Agilent 1100 HPLC-UV &/Or
Agilent 1120c HPLC-UV

5.73 %
Moisture %

1.39 %
Total PCBE

0.40%
Total Minors

ANALYTE	LOD	REGAIN %	ANHYDRO %	ACTUAL %	MG/G
N, BAEOCYSTIN	200 ppm	-0.13	0.14	0.13	1.33
BAEOCYSTIN	20 ppm	-0.15	0.16	0.15	1.54
SEROTONIN	20 ppm	0.00	0.00	0.00	0.00
PSILOCYBIN	2 ppm	-1.08	1.22	1.15	11.51
AERUGINASCIN	20 ppm	0.00	0.00	0.00	0.00
L-TRYPTOPHAN	2 ppm	-0.10	0.12	0.11	1.10
N, PSILOCIN	20 ppm	0.00	0.00	0.00	0.00
PSILOCIN	3ppm	-0.16	0.18	0.17	1.69
4-H-TMT	20ppm	0.00	0.00	0.00	0.00
VITAMIN D2	20ppm	0.00	0.00	0.00	0.00
ERGOSTEROL	20ppm	0.00	0.00	0.00	0.00
VITAMIN D3	20ppm	0.00	0.00	0.00	0.00
VITAMIN D4	20ppm	0.00	0.00	0.00	0.00
TOTALS	LOD	REGAIN %	ANHYDRO %	ACTUAL%	MG/G
PCB+PCN	3 ppm	-1.24	1.40	1.32	13.20
PCBE	2 ppm	-1.31	1.47	1.39	13.86
PCNE	3 ppm	-0.94	1.05	1.00	9.96
MINORS	20 ppm	-0.37	0.42	0.40	3.97
TOTAL FOUND	2 ppm	-1.62	1.82	1.72	17.17
TOXICITY	LOD	RESULT	Score		
HEAVY METALS	20ppm	N/D	N/D		
PESTICIDES	20ppm	N/D	N/D		
MICROBIAL TOXINS	1 CFU/G**	N/D	N/D		

DA

Doma Nunzio,
Chief Scientific Officer



Intropective Arts Labs A.K.A "Intro Arts Labs" uses its best efforts to deliver high quality results and to verify that the data contained therein are based on sound scientific judgment and levels listed are guidelines only and all data is reported based on standard laboratory procedures and deviations. However, Intro Arts Labs makes no warranties or claims to that effect and further shall not be liable for any damages or misrepresentation that may result from use or misuse of the data contained herein in any way. Further, Intro Arts Labs makes no claims regarding representations of the analyzed sample to the larger batch from which it was taken. Data and information in these reports are intended to be used for community research. "Anonymous" or "Private" reporting can be selected by using "Anonymous" or "Private" as the reporting name. "Private" reports are solely for the individual(s) for whom samples were submitted. As part of our privacy policy understand Intro Arts Labs may share and discuss results of "Public" or "Anonymous" reports; However, with "Private" reports, the data will only be discussed with the original client of record.

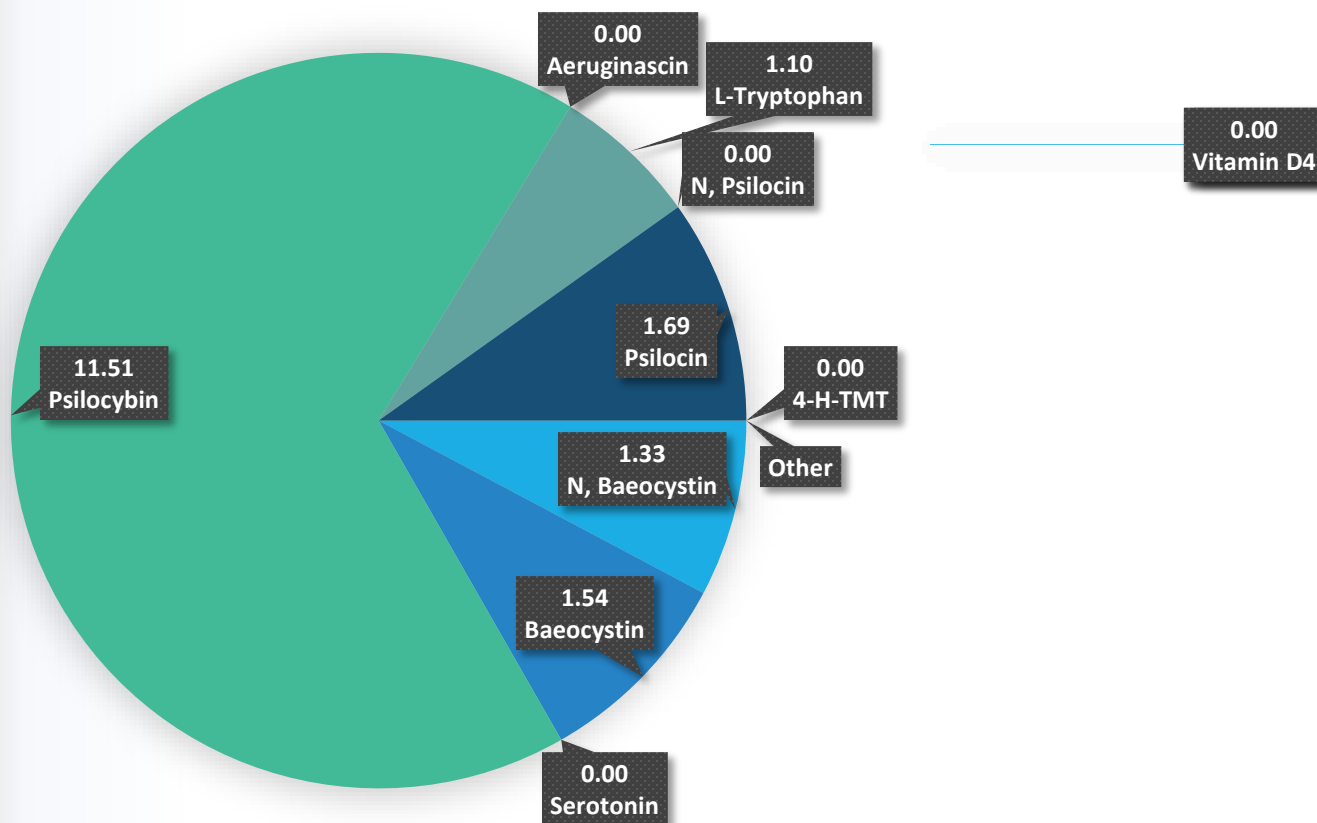


Psilovibin Nebula – P. Cubensis

Certificate of Analysis
ISO/ IEC 17025 Accreditation # Pending



Tryptamine Profile



■ N, Baeocystin ■ Baeocystin ■ Serotonin ■ Psilocybin ■ Aeruginascin ■ L-Tryptophan ■ N, Psilocin
■ Psilocin ■ 4-H-TMT ■ Vitamin D2 ■ Ergosterol ■ Vitamin D3 ■ Vitamin D4 ■

DA

Doma Nunzio,
Chief Scientific Officer



Intropective Arts Labs A.K.A "Intro Arts Labs" uses its best efforts to deliver high quality results and to verify that the data contained therein are based on sound scientific judgment and levels listed are guidelines only and all data is reported based on standard laboratory procedures and deviations. However, Intro Arts Labs makes no warranties or claims to that effect and further shall not be liable for any damages or misrepresentation that may result from use or misuse of the data contained herein in any way. Further, Intro Arts Labs makes no claims regarding representations of the analyzed sample to the larger batch from which it was taken. Data and information in these reports are intended to be used for community research. "Anonymous" or "Private" reporting can be selected by using "Anonymous" or "Private" as the reporting name. "Private" reports are solely for the individual(s) for whom samples were submitted. As part of our privacy policy understand Intro Arts Labs may share and discuss results of "Public" or "Anonymous" reports; However, with "Private" reports, the data will only be discussed with the original client of record.



Psilovibin
Nebula – P. Cubensis

Certificate of Analysis
ISO/ IEC 17025 Accreditation # Pending



5.73 %
MOISTURE %

11.51 MG/G
TOTAL PCB

13.86 MG/G
TOTAL PCBE

3.97 MG/G
TOTAL MINORS

1.69 MG/G
TOTAL PCN

9.96 MG/G
TOTAL PCNE

N/D
MICROBIAL ANALYSIS

N/D MG/G
TOTAL ERG

17.17 MG/G
TOTAL ALKALOIDS

**Reports value at actual weight unless otherwise specified*

DA

Doma Nunzio,
Chief Scientific Officer



Intropective Arts Labs A.K.A "Intro Arts Labs" uses its best efforts to deliver high quality results and to verify that the data contained therein are based on sound scientific judgment and levels listed are guidelines only and all data is reported based on standard laboratory procedures and deviations. However, Intro Arts Labs makes no warranties or claims to that effect and further shall not be liable for any damages or misrepresentation that may result from use or misuse of the data contained herein in any way. Further, Intro Arts Labs makes no claims regarding representations of the analyzed sample to the larger batch from which it was taken. Data and information in these reports are intended to be used for community research. "Anonymous" or "Private" reporting can be selected by using "Anonymous" or "Private" as the reporting name. "Private" reports are solely for the individual(s) for whom samples were submitted. As part of our privacy policy understand Intro Arts Labs may share and discuss results of "Public" or "Anonymous" reports; However, with "Private" reports, the data will only be discussed with the original client of record.



Psilovibin
Nebula – P. Cubensis

Certificate of Analysis
ISO/ IEC 17025 Accreditation # Pending



MOISTURE ANALYSIS:

UCLA Thermo-Gravimetric Analyzer

Date performed: July 15th, 2023

Moisture %: **5.73** Solid %: **94.27** Wet %: **106.08** Regain %: **6.08**

Sample Weight (g): **0.593**

Dry Weight (g): **0.559**



DA

Doma Nunzio,
Chief Scientific Officer



Introspective Arts Labs A.K.A "Intro Arts Labs" uses its best efforts to deliver high quality results and to verify that the data contained therein are based on sound scientific judgment and levels listed are guidelines only and all data is reported based on standard laboratory procedures and deviations. However, Intro Arts Labs makes no warranties or claims to that effect and further shall not be liable for any damages or misrepresentation that may result from use or misuse of the data contained herein in any way. Further, Intro Arts Labs makes no claims regarding representations of the analyzed sample to the larger batch from which it was taken. Data and information in these reports are intended to be used for community research. "Anonymous" or "Private" reporting can be selected by using "Anonymous" or "Private" as the reporting name. "Private" reports are solely for the individual(s) for whom samples were submitted. As part of our privacy policy understand Intro Arts Labs may share and discuss results of "Public" or "Anonymous" reports; However, with "Private" reports, the data will only be discussed with the original client of record.



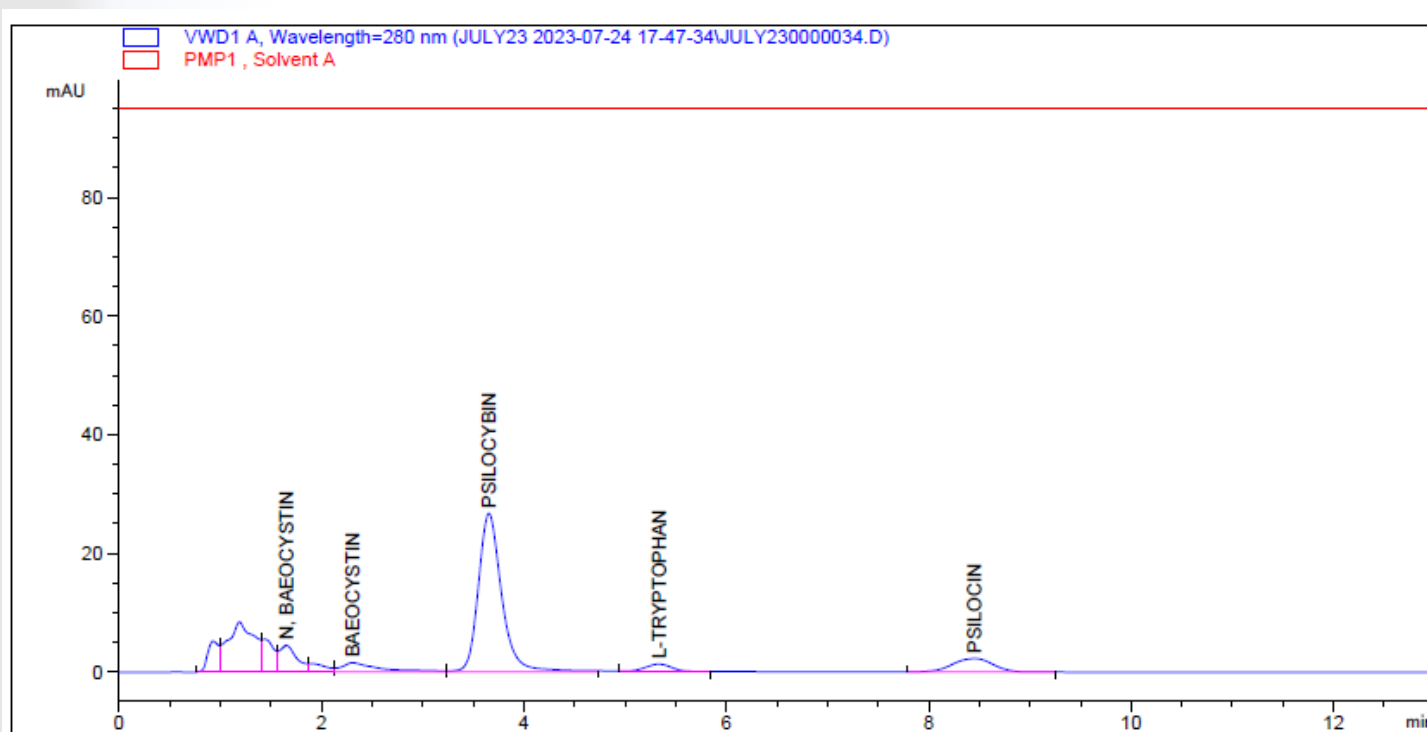
Psilovibin Nebula – P. Cubensis

Certificate of Analysis
ISO/ IEC 17025 Accreditation # Pending



CHROMATOGRAMS

Agilent 1100 HPLC-UV (Standard Fungi Method for High Through-put)



Doma Nunzio

Doma Nunzio,
Chief Scientific Officer



Introspective Arts Labs A.K.A "Intro Arts Labs" uses its best efforts to deliver high quality results and to verify that the data contained therein are based on sound scientific judgment and levels listed are guidelines only and all data is reported based on standard laboratory procedures and deviations. However, Intro Arts Labs makes no warranties or claims to that effect and further shall not be liable for any damages or misrepresentation that may result from use or misuse of the data contained herein in any way. Further, Intro Arts Labs makes no claims regarding representations of the analyzed sample to the larger batch from which it was taken. Data and information in these reports are intended to be used for community research. "Anonymous" or "Private" reporting can be selected by using "Anonymous" or "Private" as the reporting name. "Private" reports are solely for the individual(s) for whom samples were submitted. As part of our privacy policy understand Intro Arts Labs may share and discuss results of "Public" or "Anonymous" reports; However, with "Private" reports, the data will only be discussed with the original client of record.