

Unlock Your
Dream Home:
Where Every Page
Tells a Story



A PROJECT BY **MAHIR INFRA**



A PROJECT BY **MAHIR INFRA**

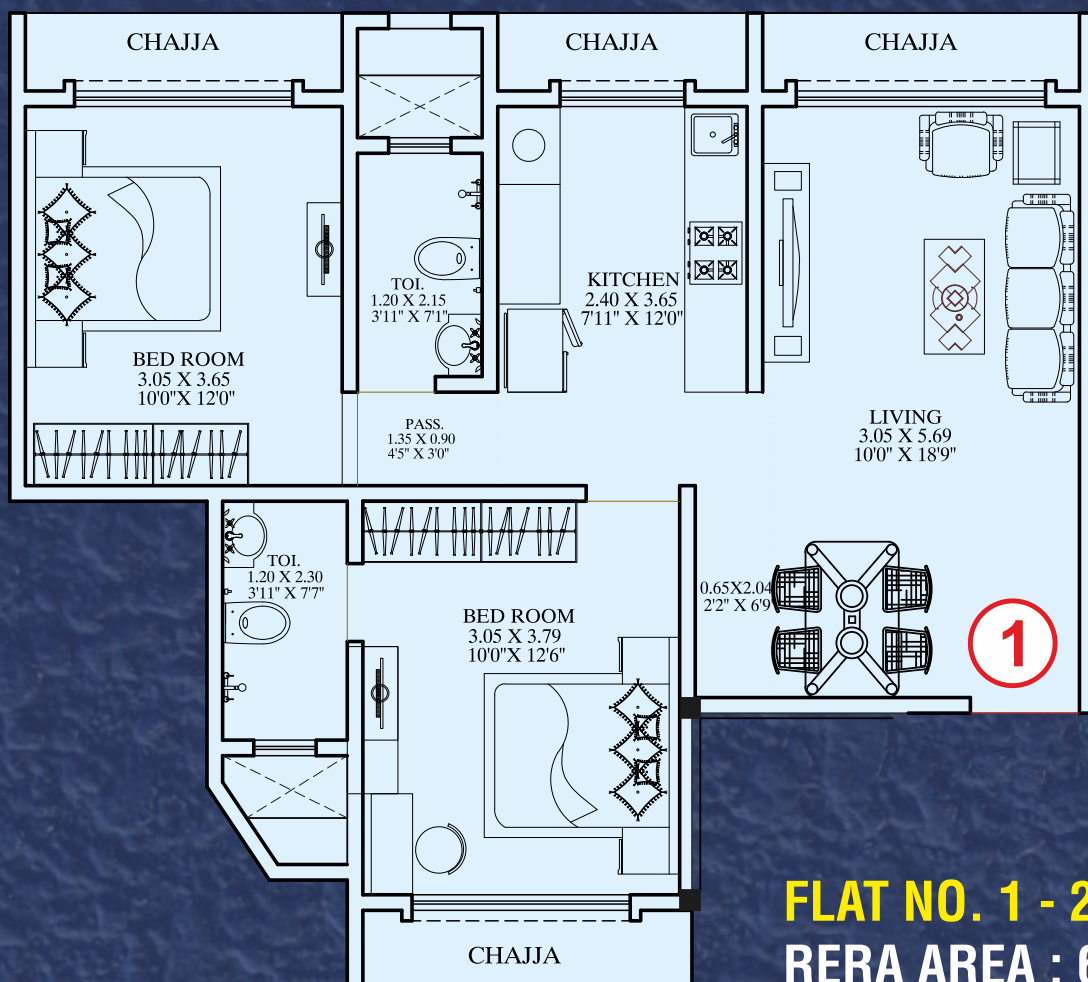
Mahir Infra is an established force in Construction, Housing, Real Estate, especially in redevelopment, formed by people with a mission to add value to life and elevate living standards of people.

We not only construct sound concrete structures but also build trust, we deliver the at most/ultimate value of money which brings a feeling of satisfaction and confidence on the face of our clients by way of comfortable and luxurious homes.

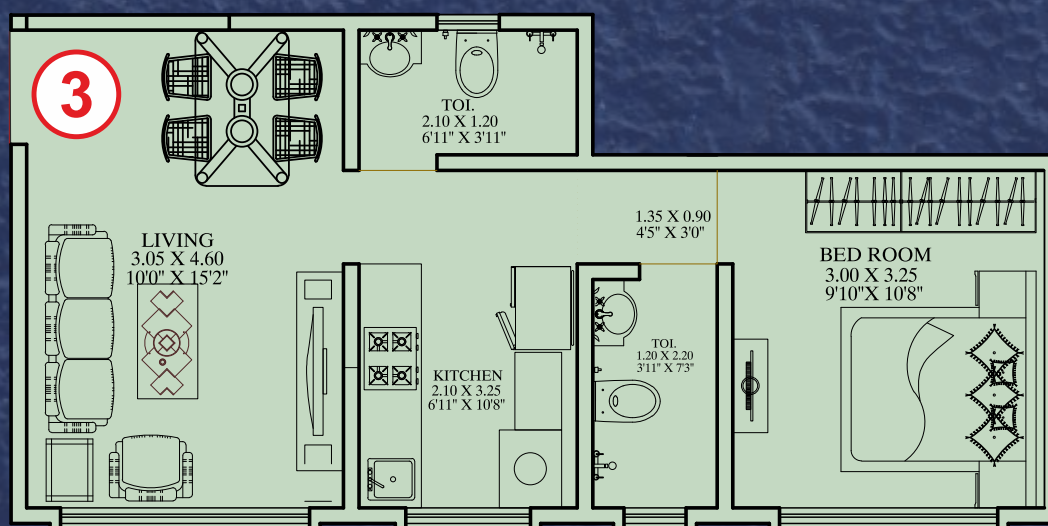
Our homes are meticulously and aesthetically designed by renowned planners/architects for optimum utility and comfort. The structures are designed by renowned structural engineers with advanced techniques; the construction part is executed adopting international standard codes, under supervision of experienced civil engineers and by competent civil contractors within the scheduled time frame.

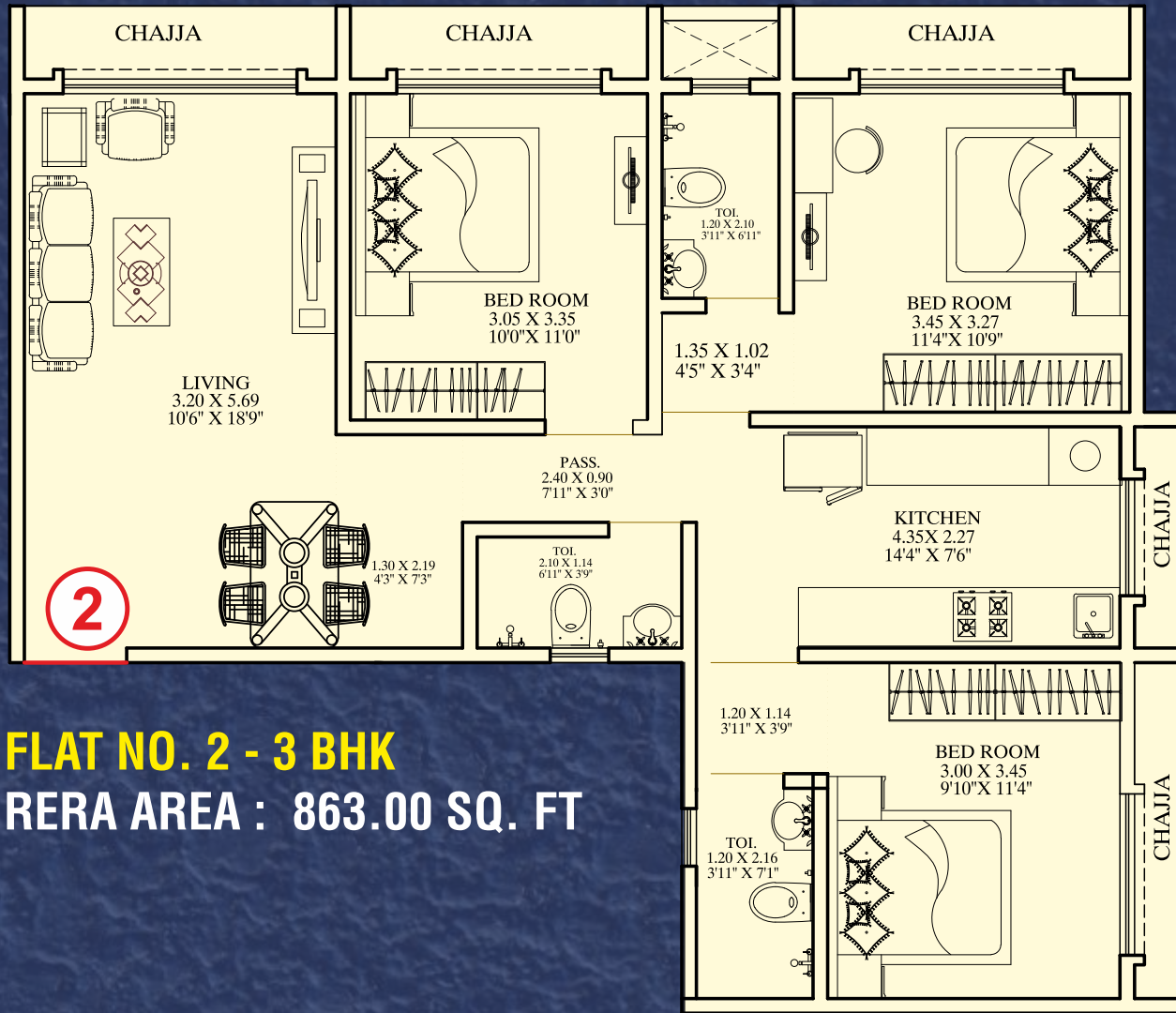
The entire operations of the firm are personally managed by our experience of qualified partners with the assistance of some of the best talent in the business in our organizational setup. With our strong financial capital base we strive to idealize dream homes into realities with looks so unique and strength so impeccable that they retain its appeal for time immemorial.





FLAT NO. 3 - 1 BHK
RERA AREA : 419.00 SQ. FT





MAHIR
Enclave



LIST OF AMENITIES

COMMON :

- ◆ Earthquake Resistant RCC Frame as per RCC Consultants design.
- ◆ Branded Elevators of Schindler/Kone/Otis or Equivalent.
- ◆ Fire Fighting Systems as per MCGM norms and guidelines.
- ◆ Well Decorated Entrance Lobby.
- ◆ Modern / Classical Elegant Elevation.
- ◆ Fitness Centre.
- ◆ CCTV Camera in Compound area.



FLOORING / TILING :

- ◆ 1600mm X 800mm Branded Vitrified Tiles flooring Doors.
- ◆ Entrance Main Door and Bedroom Door frames shall be of good quality.
- ◆ All door with Laminate finish Flush Door with all necessary hardware fittings.
- ◆ Laminate finish Flush Door to bath / WC / Toilet with all necessary Hardware fittings.



SKY LEVEL AMENITY ZONE : Sit / Out Zone with Hammock Garden with a beautiful view.



WINDOWS :

- ◆ Internal window frame of Granite/Marble with Aluminium series Anodized / powder coated will be provided.



KITCHEN :

- ◆ Granite Kitchen Platform or Artificial Stone with S. S. Sink.
- ◆ Kitchen platform shall be either 'L' shaped or 'U' shaped or on opposite side.



BATH, WC & TOILETS :

- ◆ All Sanitary fittings & fixtures provided shall be of Jaquar, Parryware, hindware or equivalent.
- ◆ Wall Mounted Toilets with Concealed Flush system.
- ◆ Hot and Cold water diverter including sprout & shower in Bathroom & Toilets.
- ◆ Wash basin with C.P fitting.
- ◆ Designer Ceramic Tiles Dado up to door height in Bath & Toilet.



Nearby Attractions :

Chembur Mono Rail station : 3 minutes

Chembur Metro Rail station : 2 minutes

Chembur Station : 4 minutes

Chembur Gymkhana : 3 minutes

Tilak Nagar Station : 5 minutes

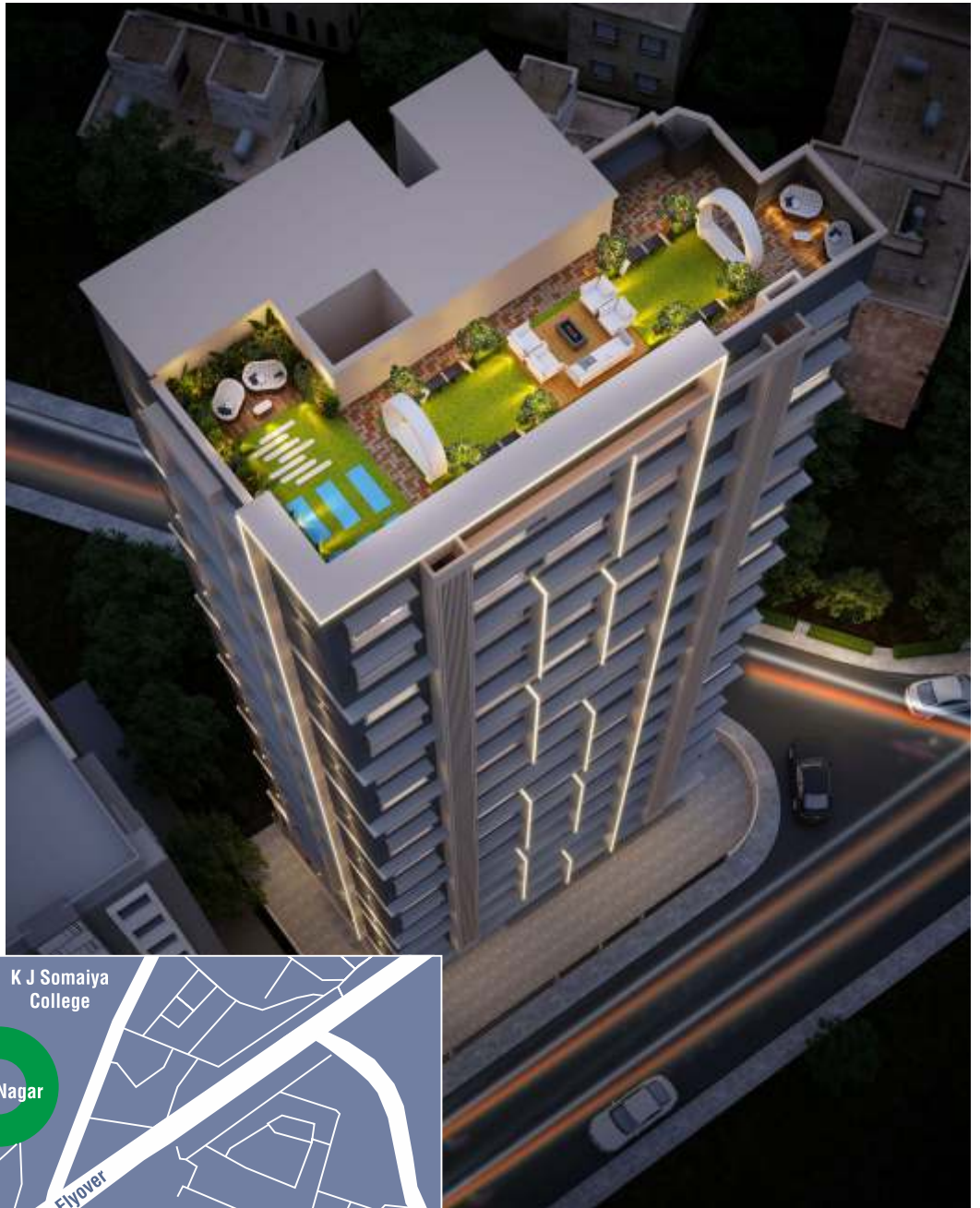
Kurla Terminus : 5 minutes

Vidyavihar Station : 7 minutes

Somaiya College : 7 minutes

Domestic Airport : 20 minutes

International Airport : 25 minutes



LOCATION PLAN



Office : **Mahir Infra**
B-207, 2nd Floor, East Point,
90 feet Road, Opp. Ganpati Mandir,
Ghatkopar - East, Mumbai 400077.
Contact : +91 82828 29050 * 022-46097575
Email : director@mahirinfra.com
www.mahirinfra.com

Site Address : **Mahir Enclave**
39, Postal Colony, Near Maa Hospital,
Chembur, Mumbai 400071.

Mahir Enclave
Rera No. P51800077652

Legal Advisor
BIPIN JOSHI

Consulting Architect
RAMESH TAMBAT

RCC Consultants
VINAYAK CHOPDEKAR & ASSOCIATES

Architect
ASHISH BHATT

Brochure Design
DEVANSH JETHVA

The information and photographs contained herein are subject to change and cannot form an offer or contract. All rendering and maps are artist's conception and not actual depiction. While every reasonable care has been taken in providing the information, the owner or his agents cannot be held responsible for any inaccuracies. The promoters reserve their rights to make alterations, additions and amendments as may be necessary and from time to time without any notice. This is only a brochure and does not have any legality.