



VALOREX

Global Corporation Ltd.

✉ info@valorexuk.com

🌐 www.valorexuk.com

☎ Office: +44 7723 563430

📞 WhatsApp: +44 7367 075773

📍 71-75 Shelton Street, Covent Garden, London, WC2H 9JQ — United Kingdom

VALOREX GC delivers luxury hotel appliances and equipment — elegantly designed for unmatched guest comfort, precision-engineered to the highest standards, and supported worldwide with comprehensive warranty and service.



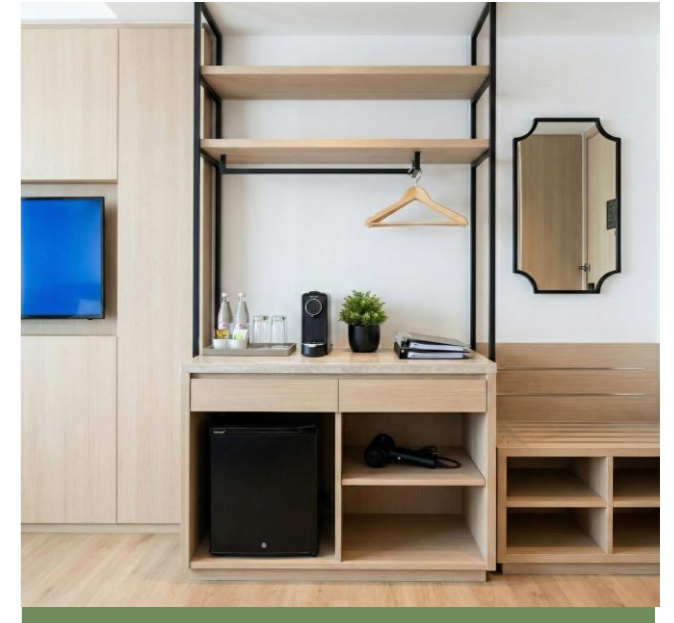
To meet you in global hotels ,Designed for performance
Crafted for hospitality

Project Showcase

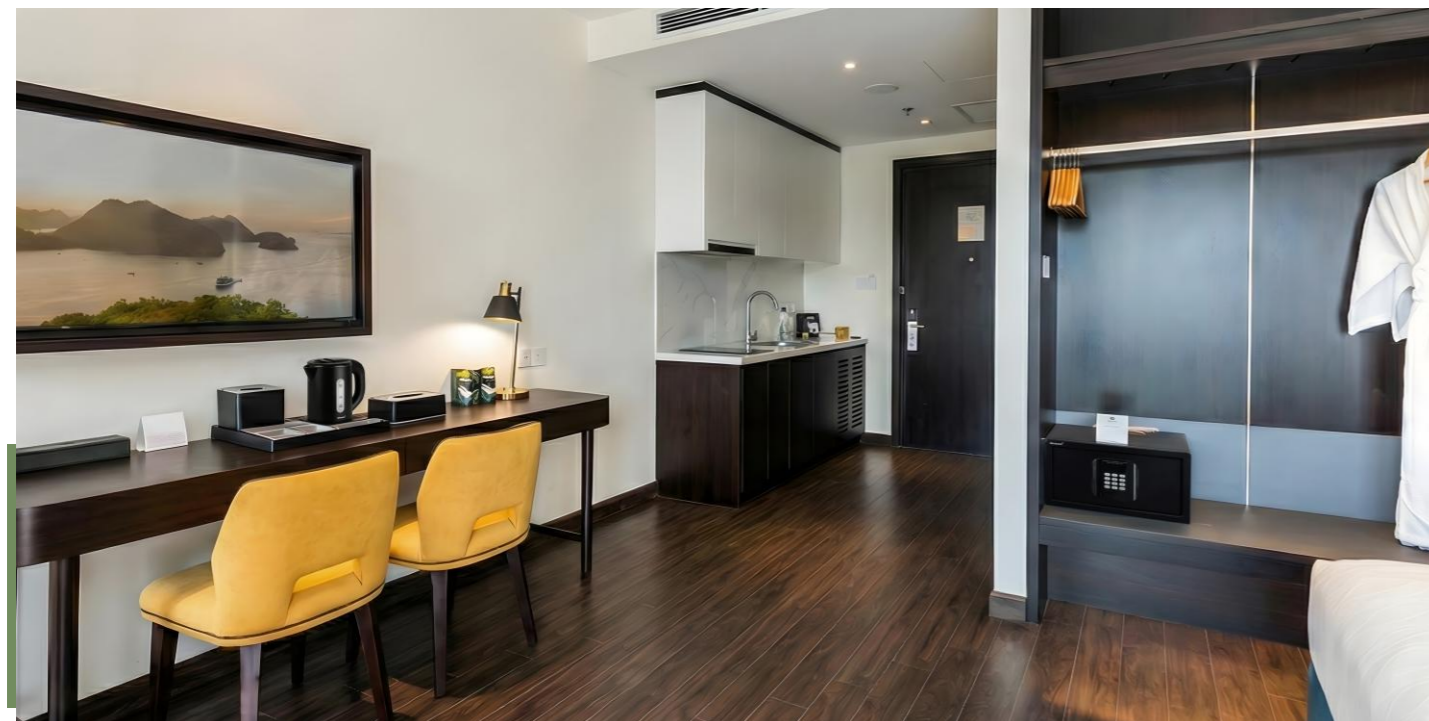
◆ Saudi Arabia- Jeddah Hilton



◆ Arena Nhatrang



◆ Best Western Premier Sapphire Halong Bay



◆ Yogyakarta Marriott Hotel



OUR MARKET

Valorex GC has a sales presence in more than 100 countries and regions worldwide.

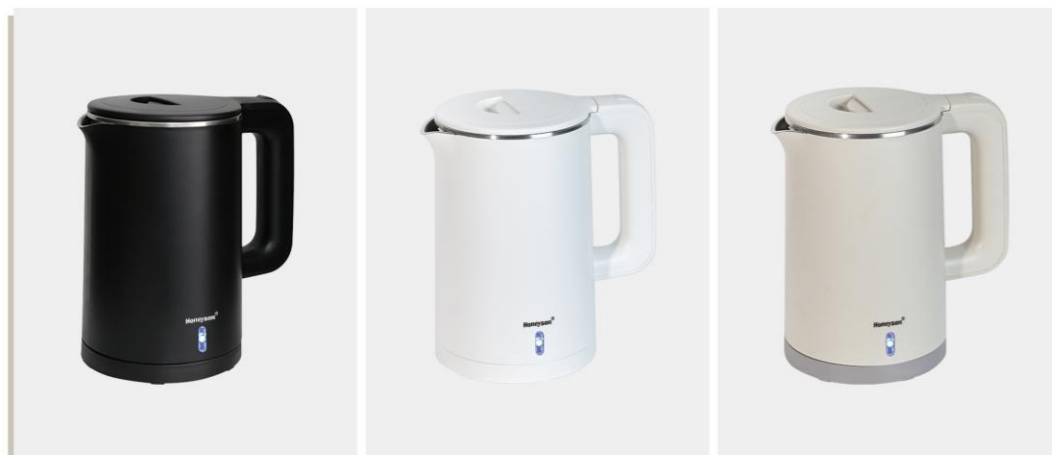


With stable manufacturing capacity and flexible OEM options, the range can be tailored to suit different hotel requirements.

Its efficient boiling, controlled heating, and durable service life support consistent performance throughout long-term guestroom use.



K106



- Features:**
- 2-layer cool touch
 - Auto shut-off & boil-dry protection
 - Concealed heating element
 - 360° cordless base
 - CE, CB, LFGB, RoHS, IECEE certified
- Specification:**
Black/White/Khaki
1200W-1400W
1.0L
0.8kg
Food-grade 304 stainless steel + PP shell

Dimensions:

Length- 188mm , Width- 130mm , Height- 205mm

H1262



- Features:**
- 2-layer cool touch
 - Water level indicators
 - Auto shut-off & boil-dry protection
 - Wide lid opening (easy cleaning)
 - Concealed heating element
 - 360° cordless base (cable storage)
 - Power indicator light
 - CE, CB, LFGB, RoHS, IECEE certified

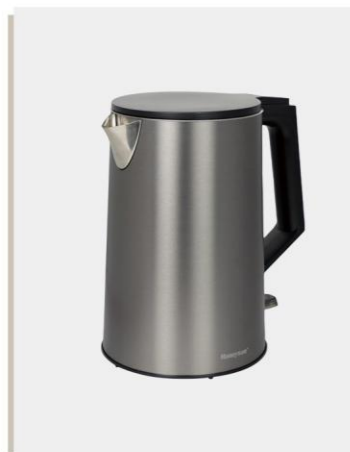
Specification:
Black/White
1000-1200W
0.6L
Food-grade 304 stainless steel + PP shell
Net weight - 0.72kg

Dimensions:

Length- 190mm , Width- 122mm , Height- 180mm

K107

K812

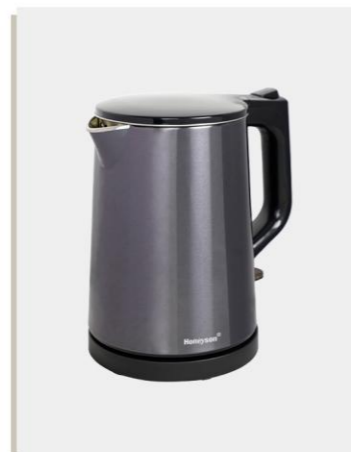


- Features:**
- 3-layer cool touch
 - Auto shut-off & boil-dry protection
 - Wide lid opening (easy cleaning)
 - Concealed heating element
 - 360° cordless base (cable storage)
 - Power indicator light
 - CE, CB, LFGB, RoHS, IECEE certified

Specification:
Mat grey
1200-1400W
1.0L
Food-grade 304 stainless steel
Net weight - 0.95kg

Dimensions:

Length- 136mm , Width- 180mm , Height- 220mm



- Features:**
- 2-layer cool touch
 - Auto shut-off & boil-dry protection
 - Wide lid opening (easy cleaning)
 - Concealed heating element
 - 360° cordless base (cable storage)
 - Power indicator light
 - CE, CB, LFGB, RoHS, IECEE certified

Specification:
Shinning grey
1000-1200W
0.8L
Food-grade 304 stainless steel
Net weight - 0.85kg

Dimensions:

Length- 200mm , Width- 138mm , Height- 200mm

K81



- Features:**
- 2-layer cool touch
 - Auto shut-off & boil-dry protection
 - Wide lid opening (easy cleaning)
 - Concealed heating element
 - Seamless structure
 - 360° cordless base (cable storage)
 - Power indicator light
 - CE, CB, LFGB, RoHS, IECEE certified

Specification:
Black/White (matte)
1000-1200W
0.8L
Food-grade 304 stainless steel + PP shell
Net weight - 0.86kg

Dimensions:

Length- 180mm , Width- 135mm , Height- 210mm

K108

H1263



- Features:**
- Auto shut-off & boil-dry protection
 - Concealed heating element
 - 360° cordless base
 - Power indicator light

Specification:
Silver
1200W-1400W
1.0L
0.8kg
Food-grade 304 stainless steel

Dimensions:

Length- 155mm , Width- 128mm , Height- 185mm



- Features:**
- Metal appearance
 - Water level indicators
 - Auto shut-off & boil-dry protection
 - Cool plastic handle (anti-scald)
 - Wide lid opening (easy cleaning)
 - Concealed heating element
 - 360° cordless base (cable storage)
 - Power indicator light
 - CE, CB, LFGB, RoHS, IECEE certified

Specification:
Brushed silver
1000-1200W
0.6L
Food-grade 304 stainless steel
Net weight -0.69kg

Dimensions:

Length- 190mm , Width- 122mm , Height- 180mm

K85



- Features:**
- 3-layer cool touch, metal exterior (safe handling & high-end decor)
 - Auto shut-off & boil-dry protection
 - Wide lid opening (easy cleaning)
 - Concealed heating element, seamless structure
 - 360° cordless base with cable storage
 - Power indicator light
 - CE, CB, LFGB, RoHS, IECEE certified

Specification:
Golden/Silver
1000-1200W
0.8L
Food-grade 304 stainless steel
Net weight - 0.94kg

Dimensions:

Length- 180mm , Width- 135mm , Height- 210mm

H1208



- Features:**
- Stylish appearance
 - Auto shut-off & boil-dry protection
 - Cool plastic handle (anti-scald)
 - Wide lid opening (easy cleaning)
 - Concealed heating element
 - 360° cordless base (cable storage)
 - Power indicator light
 - CE, CB, LFGB, RoHS, IECEE certified

Specification:
 Brushed silver/Gun
 800-1000W
 0.8L
 Food-grade 304 stainless steel
 Net weight - 0.7kg

Dimensions:
 Length- 195mm , Width- 155mm , Height- 210mm

H1268



- Features:**
- 2-layer cool touch exterior
 - Auto shut-off & boil-dry protection
 - Wide lid opening (easy cleaning)
 - Concealed heating element, seamless structure
 - 360° cordless base with cable storage
 - Power indicator light
 - CE, CB, LFGB, RoHS, IECEE certified

Specification:
 Black/White/khaki (matte)
 1000-1200W
 0.8L
 Food-grade 304 stainless steel + PP shell
 Net weight - 0.78kg

Dimensions:
 Length- 200mm , Width- 122mm , Height- 200mm

H1261



- Features:**
- Metal appearance
 - Auto shut-off & boil-dry protection
 - Cool plastic handle (anti-scald)
 - Wide lid opening (easy cleaning)
 - Concealed heating element
 - 360° cordless base (cable storage)
 - Power indicator light
 - CE, CB, LFGB, RoHS, IECEE certified

Specification:
 Brushed silver
 1000-1200W
 0.6L
 Food-grade 304 stainless steel
 Net weight - 0.62kg

Dimensions:
 Length- 170mm , Width- 120mm , Height- 185mm

H1205



- Features:**
- Metal appearance
 - Auto Shut-Off & Boil-Dry protection
 - Cool plastic handle (anti-scald)
 - Wide lid opening (easy cleaning)
 - Concealed heating element
 - 360° Cordless base with cable storage
 - Power indicator light
 - Certifications: CE, CB, IECEE

Specification:
 Brushed silver
 1000-1200W
 1.2L
 Food-grade 304 stainless steel
 Net weight - 0.8kg

Dimensions:
 Length- 190mm , Width- 165mm , Height- 220mm

H1206



- Features:**
- 2-layer cool touch exterior
 - Auto shut-off & boil-dry protection
 - Wide lid opening (easy cleaning)
 - Concealed heating element
 - 360° cordless base with cable storage
 - Power indicator light
 - Certifications: CE, CB, IECEE

Specification:
 Black/Silver
 1000-1200W
 1.2L
 Food-grade 304 stainless steel
 Net weight - 0.91kg

Dimensions:
 Length- 190mm , Width- 165mm , Height- 220mm

H1015



- Features:**
- 360° cordless design for easy use
 - Food-grade stainless steel interior
 - Concealed heating element
 - Automatic switch-off & dry-boil protection
 - Indicator light operation
 - Cool-touch exterior

Specification:
 1.0L
 1200-1400W
 Food-grade 304 stainless steel
 Net weight- 0.75kg

Dimensions:
 Length- 200mm , Width- 130mm , Height- 210mm

K66



- Features:**
- 360° cordless kettle base
 - SUS304 stainless steel inner body
 - Automatic switch-off & dry boil protection
 - LED indicator
 - Cool-touch PP housing

Specification:
 Black
 1000-1200W
 0.6L
 Food-grade 304 stainless steel
 Net weight- 0.75kg

Dimensions:
 Length- 167.5mm , Width- 117.5mm , Height- 179.5mm



K89

**Features:**

- 2-layer cool touch exterior
- Water level indicators
- Auto shut-off & boil-dry protection
- Wide lid opening (easy cleaning)
- Concealed heating element
- 360° cordless base (cable storage)
- Power indicator light
- CE, CB, LFGB, RoHS, IECEE certified

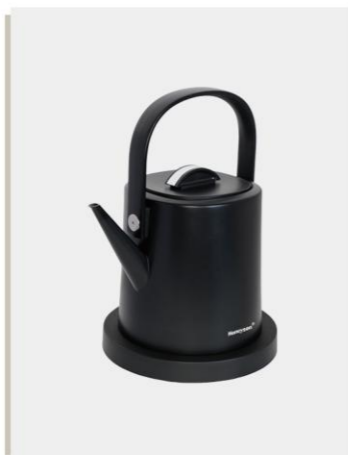
Specification:

Black
1000-1200W
0.8L
Food-grade 304 stainless steel +
PP shell
Net weight - 0.78kg

Dimensions:

Length- 200mm , Width- 122mm , Height- 200mm

K102

**Features:**

- LED temperature display on heating base
- Auto shut-off & boil-dry protection
- Cool metal handle (anti-scald)
- Wide lid opening (easy cleaning)
- Concealed heating element
- 360° cordless base with cable storage
- Power indicator light
- CE, CB, LFGB, RoHS, IECEE certified

Specification:

White/Black(matte)/Grey
1200-1400W
1.0L
Food-grade 304 stainless steel
Net weight - 1.17kg
Full Handle

Dimensions:

Length- 200mm , Width- 170mm , Height- 270mm

K83

**Features:**

- 2-layer cool touch exterior (safe handling)
- Auto shut-off & boil-dry protection
- Wide lid opening (easy cleaning)
- Concealed heating element, seamless structure
- 360° cordless base with cable storage
- Power indicator light
- Certifications: CE, CB, IECEE

Specification:

Black/Khaki/Orange (matte)
1350-1600W
0.8L
Food-grade 304 stainless steel
Net weight - 0.84kg

Dimensions:

Length- 190mm , Width- 135mm , Height- 180mm

K88

**Features:**

- 2-layer cool touch exterior
- Blue LED indicator light (working status visible)
- Auto shut-off & boil-dry protection
- Wide lid opening (easy cleaning)
- Concealed heating element, seamless structure
- 360° cordless base with cable storage
- Power indicator light
- CE, CB, LFGB, RoHS, IECEE certified

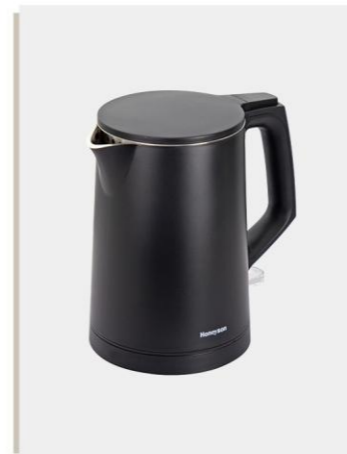
Specification:

Black/White (matte)
1000-1200W
0.8L
Food-grade 304 stainless steel + PP shell
Net weight - 0.78kg

Dimensions:

Length- 200mm , Width- 122mm , Height- 200mm

H1012

**Features:**

- 2-layer cool touch exterior (safe handling)
- Auto shut-off & boil-dry protection
- Wide lid opening (easy cleaning)
- Concealed heating element, seamless structure
- 360°cordless base with cable storage
- Power indicator light
- Certifications: CE, CB, LFGB, RoHS, IECEE

Specification:

Black (matt)
1000-1200W
1.0L
Food-grade 304 stainless steel
Net weight - 0.82kg

Dimensions:

Length- 205mm , Width- 135mm , Height- 210mm

K105

**Features:**

- Soft + cool touch, 2-layer structure (cool touch exterior for safe handling)
- Auto shut-off & boil-dry protection
- Concealed heating element
- 360° cordless base with cable storage compartment
- Power indicator light
- Certifications: CE, CB, LFGB, RoHS, IECEE

Specification:

Black
1200-1400W
1.0L
0.85kg
Food-grade 304 stainless steel + PP shell

Dimensions:

Length- 200mm , Width- 140mm , Height- 210mm

K87

**Features:**

- Slender gooseneck design, matte black finish
- Auto Shut-Off & Boil-Dry protection
- Cool plastic handle (anti-scald)
- Wide lid opening (easy cleaning)
- 360° cordless base with cable storage
- Power indicator light
- Certifications: CE, CB, LFGB, RoHS, IECEE

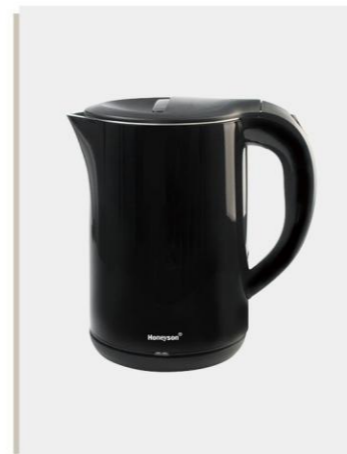
Specification:

Matte black (Black/White available)
1200-1400W
0.8L
Food-grade 304 stainless steel
Net weight - 1.0kg

Dimensions:

Length- 260mm , Width- 160mm , Height- 220mm

H1266

**Features:**

- Auto shut-off & boil-dry protection
- Concealed heating element
- 360° cordless base
- Power indicator light
- Certifications: CE, CB, LFGB, RoHS, IECEE

Specification:

Black
1500-1800W
1.2L
Food-grade 304 stainless steel
Net weight - 0.85kg

Dimensions:

Length- 210mm , Width- 135mm , Height- 215mm

H1206-1

**Features:**

- Metal appearance design, with water level indicator
- Auto Shut-Off & Boil-Dry protection
- Cool plastic handle (anti-scald)
- Wide lid opening (easy cleaning)
- Concealed heating element
- 360° cordless base with cable storage compartment
- Power indicator light
- Certifications: CE, CB, IECEE, RoHS

Specification:

Brushed silver (Silver available)
1000-1200W
1.0L
Food-grade 304 stainless steel
Net weight - 0.78kg

Dimensions:

Length- 155mm , Width- 128mm , Height- 185mm

H1701

**Features:**

- Vintage design with high glossy finish
- Water level indicator, large water temperature gauge
- Auto Shut-Off & Boil-Dry protection
- Wide lid opening (easy cleaning)
- SWIVEL BASE, 360° cordless base with cable storage
- Power indicator light
- Certifications: CE, CB, LFGB, RoHS, IECEE

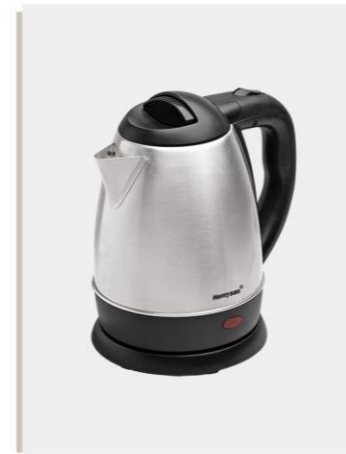
Specification:

Blue/Ivory
1850W
1.7L
Food-grade 304 stainless steel
Net weight - 0.95kg

Dimensions:

Length- 205mm , Width- 205mm , Height- 245mm

H1202

**Features:**

- Metal appearance design.
- Cool plastic handle, remaining safe and anti-scald.
- Concealed heating element
- 360° cordless base with cable storage compartment
- Power indicator light
- Certifications: CE, CB, LFGB, RoHS, IECEE

Specification:

Black
1350-1600W
1.2L
0.67kg
Food-grade 304 stainless steel

Dimensions:

Length- 200mm , Width- 145mm , Height- 220mm

H0881S

**Features:**

- Cool plastic handle remaining safe and anti-scald.
- Wide lid opening design for easy cleaning
- Concealed heating element
- 360° Cordless base with cable storage compartment
- Power indicator light
- Certifications: CE, CB, LFGB, RoHS, IECEE

Specification:

Brushed silver
1000-1200W
0.8L
Food-grade 304 stainless steel
Net weight - 0.64kg

Dimensions:

Length- 195mm , Width- 155mm , Height- 210mm

H0880S

**Features:**

- 2-Layer structure, cool touch exterior (safe handling)
- Auto Shut-Off and Boil-Dry protection (maximum safety)
- Wide lid opening design (easy cleaning)
- Concealed heating element
- 360° Cordless base with cable storage compartment
- Power indicator light
- Certifications: CE, CB, LFGB, RoHS, IECEE

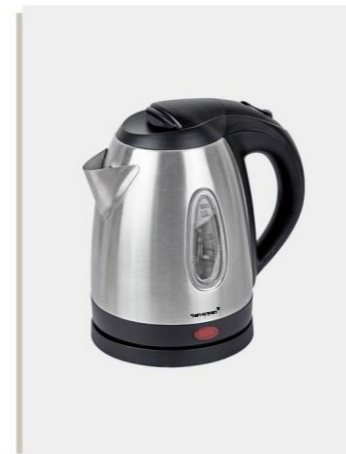
Specification:

Black/Ivory
1000-1200W
0.8L
Food-grade 304 stainless steel
Net weight - 0.74kg

Dimensions:

Length- 195mm , Width- 155mm , Height- 210mm

H1013

**Features:**

- Metal appearance
- 2 water level indicators
- Auto shut-off & boil-dry protection
- Cool plastic handle (anti-scald)
- Wide lid opening (easy cleaning)
- Removable & washable filter
- Concealed heating element
- 360° cordless base (cable storage)
- Power indicator light
- CE, CB, LFGB, RoHS, IECEE certified

Specification:

Brushed silver
1800-2100W
1.0L
Food-grade 304 stainless steel
Net weight- 0.75kg

Dimensions:

Length- 200mm , Width- 140mm , Height- 210mm

H1202B

**Features:**

- Metal appearance
- Water level indicator
- Auto Shut-Off & Boil-Dry protection
- Cool plastic handle (anti-scald)
- Wide lid opening (easy cleaning)
- Removable & washable filter
- 360° cordless base (cable storage)
- Power indicator light
- Certifications: CE, CB, LFGB, RoHS, IECEE

Specification:

Brushed silver
1800-2100W
1.2L
Food-grade 304 stainless steel
Strix
(guaranteed lifespan, fast boiling, low noise)
Net weight-0.84kg
Length- 200mm , Width- 138mm , Height- 200mm

Dimensions:

Length- 200mm , Width- 138mm , Height- 200mm

H2002

**Features:**

- 2-Layer structure, cool touch exterior (safe handling)
- Auto Shut-Off and Boil-Dry protection (maximum safety)
- Cool plastic handle (safe & anti-scald)
- Wide lid opening design (easy cleaning)
- Concealed heating element, seamless structure
- 360° Cordless base with cable storage compartment
- Power indicator light
- Certifications: CE, CB, LFGB, RoHS, IECEE

Specification:

Black/Ivory
1350-1600W
1.2L
Food-grade 304 stainless steel + PP shell
Net weight - 0.76kg

Dimensions:

Length- 200mm , Width- 155mm , Height- 220mm

K109

**Features:**

- 360 degree rotation cordless pyramid kettle
- Boil dry protection -automatically switches off
- Illuminated power indicator
- 304 Stainless steel housing

Specification:

Black/Ivory
1500W
1L



- A quiet and direct solution for in-room coffee.
Consistent brewing and simple operation make it easy for guests to prepare a cup at any time.





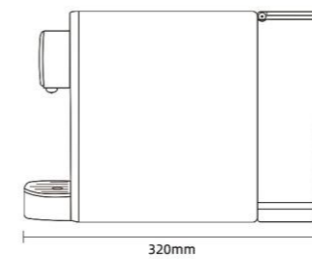
HS-203B



Features:
 Practical design for easy organisation and storage of Nespresso compatible capsule.
 Removable water tank and drip tray for easy clean up.
 Available capacity for espresso or coffee lungo.
 Energy saving function: Auto turn off in 5 minute.

Specification:
 Black
 1100W
 600ml
 Compatible capsule: only Nespresso
 Type Of PUMP: ULKA Ep4

Dimensions:
 Length- 320mm , Width- 80mm , Height- 221mm



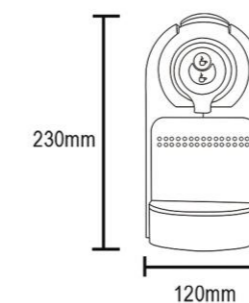
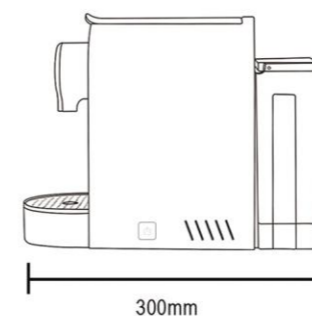
HS-202B/HS-202W



Features:
 Practical design for easy organisation and storage of Nespresso compatible capsule.
 Removable water tank and drip tray for easy clean up.
 Available capacity for espresso or coffee lungo.
 Energy saving function: Auto turn off in 5 minute.

Specification:
 Black/White
 1400W
 700ml

Dimensions:
 Length- 300mm , Width- 120mm , Height- 230mm



trus pleasure and pprivilege



Hospitality Tray Sets

Tray sets bring order and convenience to the guestroom beverage area, keeping items organized and easy to access.

Durable materials and clear layouts help hotels present amenities neatly and efficiently.

STAINLESS STEEL DRIP TRAY



Expertly Engineered to Stand the Test of Time

Our electrical product guarantee underpins this guiding philosophy.

We take a comprehensive approach to construction, materials selection, and durability testing, ensuring that we deliver market-leading products to our clients. With a deep understanding of customer requirements, we enforce rigorous quality control protocols across every stage of in-factory production, guaranteeing that our offerings consistently meet the stringent standards we have established for ourselves.



A TRAY



- Features:**
- Melamine compact tray
 - Fits various kettles
 - Black/ivory available
 - Easy to clean, water & burn resistant

Color:
Black/Ivory

Specification:

| Main Tray: | Tea Box: | Service Tray: |
|---------------|---------------|---------------|
| Length- 345mm | Length- 130mm | Length- 345mm |
| Width- 315mm | Width- 100mm | Width- 138mm |
| Height- 22mm | Height- 40mm | Height- 20mm |

B TRAY



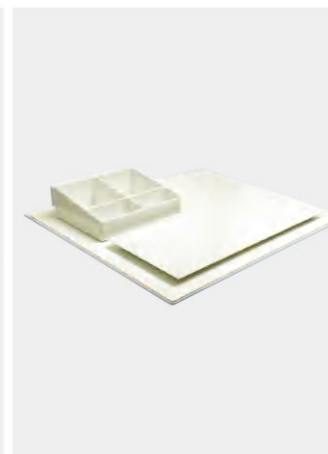
- Features:**
- Melamine compact tray
 - With built-in heating base
 - Available in black and ivory colours
 - Easy to clean, water resistant & burn resistant

Color:
Black/Ivory

Specification:

| Main Tray: | Tea Box: | Service Tray: |
|----------------|---------------|---------------|
| Length- 383mm | Length- 155mm | Length- 335mm |
| Width- 308mm | Width- 115mm | Width- 132mm |
| Height- 22.5mm | Height- 50mm | Height- 11mm |

C TRAY



- Features:**
- Compact welcome tray made of Melamine
 - Fits different model kettles
 - Available in black and ivory colours
 - Easy to clean

Color:
Black/Ivory

Specification:

| Main Tray: | Tea Box: |
|----------------|---------------|
| Length- 385mm | Length- 155mm |
| Width- 308mm | Width- 115mm |
| Height- 22.5mm | Height- 50mm |

Service Tray:

Length- 335mm
Width- 132mm
Height- 11mm

D TRAY



- Features:**
- Material: Melamine
 - Integrated space for kettle base
 - Easy to clean
 - Water resistant

Color:
Black

Specification:
Length- 395mm
Width- 200mm
Height- 26mm

I TRAY



- Features:**
- Material: ABS
 - Integrated space for kettle base
 - 2 indentations for sachets and spoons
 - Easy to clean
 - Water resistant

Color:
Black

Specification:
Length- 358mm
Width- 260mm
Height- 30mm

H TRAY



- Features:**
- Material: Melamine
 - Integrated space for kettle base
 - Easy to clean & water resistant
 - Burn resistant, anti-stain finish

Color:
Black

Specification:
Main Tray:
Length- 462mm
Width- 369mm
Height- 62mm
Service Tray:
Length- 429mm
Width- 183mm
Height- 29mm
Tea Box:
Length- 195mm
Width- 146mm
Height- 40mm

J TRAY



- Features:**
- Material: Melamine
 - Integrated space for kettle base
 - Indentations for sachets, spoon, 2 bottles of water and 2 mugs
 - Easy to clean
 - Water resistant
 - Burn resistant

Color:
Black

Specification:
Length- 420mm
Width- 300mm
Height- 30mm

G-1 TRAY



- Features:**
- Material: ABS
 - Integrated space for kettle base
 - Easy to clean
 - Water resistant

Color:
Black

Specification:
Length- 443mm
Width- 227mm
Height- 36mm

G TRAY



- Features:**
- Material: ABS
 - Integrated space for kettle base
 - Easy to clean
 - Water resistant

Color:
Black

Specification:
Length- 443mm
Width- 227mm
Height- 36mm

K TRAY



- Features:**
- Material: ABS
 - Integrated space for kettle base
 - Indentations for sachets, spoons, 2 bottles of water and 2 mugs
 - Easy to clean
 - Water resistant

Color:
Black

Specification:
Length- 405mm
Width- 270mm
Height- 40mm

N42M



- Features:**
- Material: Melamine
 - Integrated space for kettle base
 - Indentations for sachets, spoons, capsule and cups
 - Easy to clean
 - Water resistant
 - Burn resistant, anti-stain finish

Color:
Black

Specification:
Length- 420mm
Width- 310mm
Height- 28mm

E TRAY

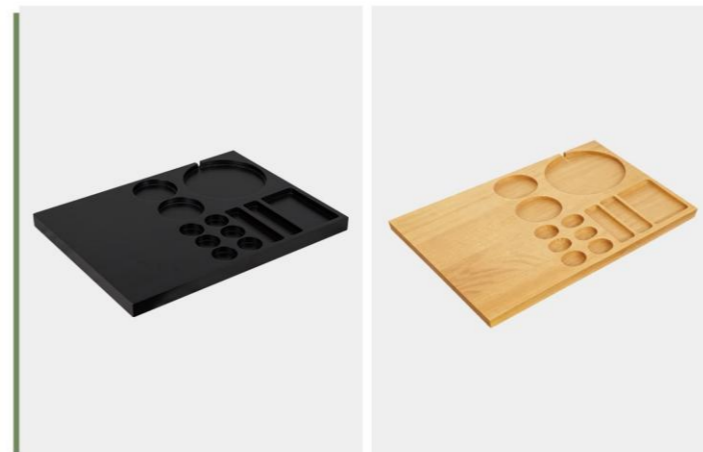


- Features:**
- Material: Melamine
 - Available sizes: large, medium, small
 - Easy to clean
 - Water resistant
 - Burn resistant

Color:
Black

Specification:
E1:
Length- 395mm
Width- 280mm
Height- 24mm
E2:
Length- 350mm
Width- 250mm
Height- 21mm
E3:
Length- 292mm
Width- 210mm
Height- 18mm

N42



- Features:**
- Material: Beech wood
 - Integrated space for kettle base
 - Indentations for sachets, spoons, capsule and cups
 - Easy to clean
 - Strong lacquer to minimize scratches and stains

Color:
Nature/Black

Specification:
Length- 420mm
Width- 315mm
Height- 25mm



M TRAY

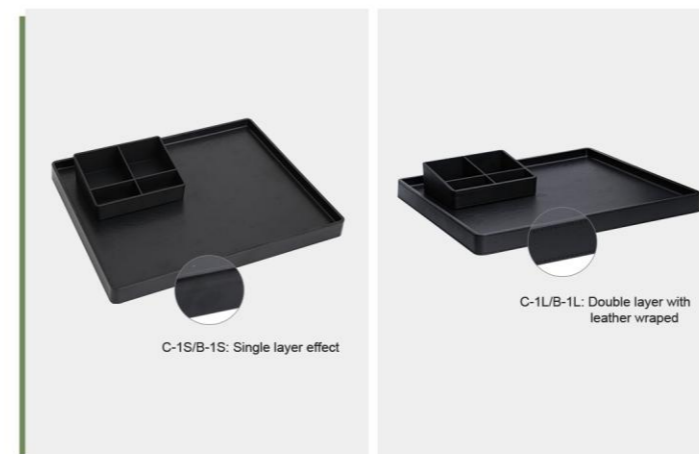


- Features:**
- Material: ABS
 - Integrated space for kettle base
 - Easy to clean
 - Water resistant
 - Organized and efficient large storage
 - Space saving

Color:
Black / White

Specification:
Length- 267mm
Width- 190mm
Height- 80mm

C-1S/C-1L TRAY



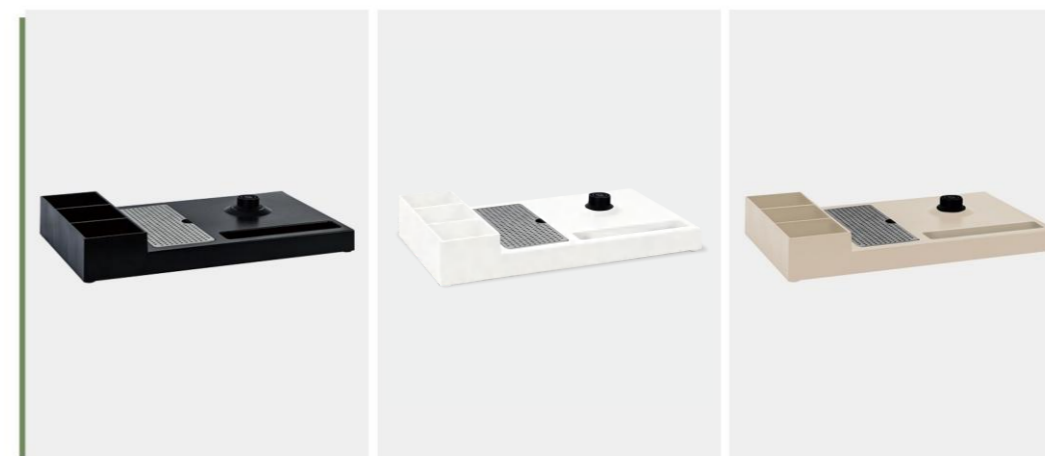
- Features:**
- Material: ABS
 - Available in black and ivory colours
 - Wooden grain to avoid stains
 - Easy to clean
 - Water resistant
 - Burn resistant

Color:
Black/Ivory

Specification:

| | |
|-------------------|-------------------|
| C-1S/C-1L: | B-1S/B-1L: |
| Length- 300mm | Length- 150mm |
| Width- 150mm | Width- 115mm |
| Height- 30mm | Height- 50mm |

P TRAY



- Features:**
- Material: ABS
 - Integrated space for kettle base
 - 3 indentations for sachets and spoon
 - Easy to clean
 - Water resistant

Color:
Black/White/Khaki

Specification:
Length- 350mm
Width- 204mm
Height- 50mm

S TRAY



Features:
 ·Material: Beech wood
 ·Anti-theft: cable can be secured on the tray
 ·Integrated space for kettle base
 ·2 indentations for sachets and spoons
 ·Easy to clean
 ·Strong lacquer to minimize scratches and stains
Color:
 Mahogany

Specification:
 Length- 400mm
 Width- 200mm
 Height- 30mm

W TRAY



Features:
 ·Material: Beech wood
 ·Integrated space for kettle base
 ·2 indentations for sachets and spoons
 ·Easy to clean
 ·Strong lacquer to minimize scratches and stains
Color:
 Nature

Specification:
 Length- 363mm
 Width- 240mm
 Height- 33mm

L12 TRAY



Features:
 ·Material: Durable faux leather (PU, MDF)
 ·Suitable for all commonly used style coffee machines
 ·Removable drawer to hold capsules & tea or coffee bag
 ·Large Drawer Tray
 ·4 compartments
 ·Holder dimension:
 W-195 D-275 H-45mm
Color:
 Black

Specification:
 Length- 315mm
 Width- 415mm
 Height- 78mm



L13 TRAY



Features:
 ·Specially with drawer running device
 ·Made of durable faux leather (PU)
 ·Enough space to put coffee machine, kettle, saucer etc.
 ·Non-slip footing
 ·Tray size and drawer layout can be customized as per customer need
Color:
 Black

Specification:
 Length- 518mm
 Width- 345mm
 Height- 115mm



T TRAY



Features:
 ·Material: ABS
 ·Integrated space for kettle base
 ·Easy to clean
 ·Water resistant
Color:
 Black

Specification:
 Length- 240mm
 Width- 240mm
 Height- 30mm

T-1 TRAY



Features:
 ·Material: ABS
 ·Integrated space for kettle base
 ·Easy to clean
 ·Water resistant
Color:
 Black

Specification:
 Length- 240mm
 Width- 240mm
 Height- 30mm

VS-I TRAY



Features:
 Material: ABS
 Integrated space for kettle base
 2 indentations for sachets and spoons
 Easy to clean
Color:
 Black/Grey

Specification:
 Length- 370mm
 Width- 240mm
 Height- 30.5mm

R TRAY



Features:
 ·Material: ABS, durable lifespan
 ·Available for different kettles
 ·Waterproof and high-resistance
Color:
 Black/Khaki

Specification:
R1: Length- 390mm
 Width- 260mm
 Height- 30mm
R2: Length- 160mm
 Width- 70mm
 Height- 55mm



Its stable performance and durable construction maintain reliability in settings where steady output is required throughout the day.



The commercial blender supports beverage and food-prep needs in hotel service areas, delivering stable performance through repeated use. Its strong motor and durable build help staff work efficiently with reduced noise and minimal maintenance.





HS-8006R

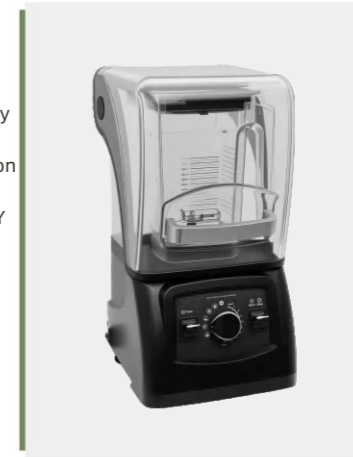


- Features:**
- 3HP constant speed motor, more durable and quiet
 - 2L PC unbreakable jar,5.5mm thickness specialdesigned for heavy duty purpose
 - Touch screen control, easy operation
 - 5 pre-set programs(each program can be DiY into6 cycles, total 30 DrY cycles)
 - Individual power on/off button for better protection8)
 - 400-28000RPM variable speed

Specification:
Black
1800W
2L

Dimensions:
Length- 227mm , Width- 264mm , Height- 465mm

HS-9008



- Features:**
- Cold-forged steel, integrated molding
 - Rust-resistant, durable, with Japanese double bearings and double oil seals
 - Noise Enclosure Thickness: 9 mm
 - Motor Speed: Up to 20,000 RPM

Specification:
Black
1500W
1.5L

Dimensions:
Length- 225mm , Width- 240mm , Height- 440mm

HS-7000



- Features:**
- Powerful chip system design, 4 preset smart programs
 - IMD coating technology key panel, moisture-proof and waterproof
 - All stainless steel, wear and high temperature resistance.

Specification:
Black
1500W
2L

Dimensions:
Length- 185mm , Width- 220mm , Height- 460mm

HS-380



- Features:**
- Pure copper high speed motor , power cord: 1.05m.
 - Food grade #304 stainless steel blades, sharp and multi-angle
 - Anti-skid and shockproof base design
 - housing color:black or silver
 - Variable speed control

Specification:
Black
2200W
4L

Dimensions:
Length- 210mm , Width- 230mm , Height- 540mm

HS-9007



- Features:**
- 7 preset programs, customizable programs.
 - Cold forged steel integrated molding,rust resistantdurable double bearing double oil seal.
 - Noise enclosure thickness9MM,the minimum working noisecan be as low as 60db,
 - Full waterproof,patented sealing technolo-gyof imported materials from Japan

Specification:
Black
1500W
1.5L
Pure copper heavy duty motor

Dimensions:
Length- 224mm , Width- 212mm , Height- 46mm

HS-BL9002

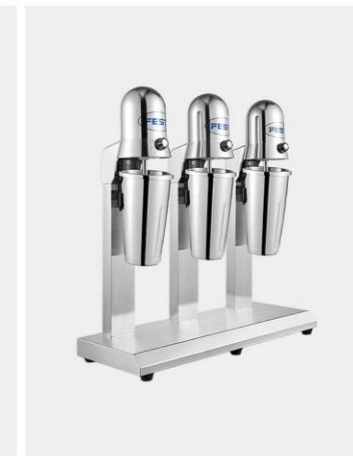


- Features:**
- Waterproof buttons,7 preset programs, customizable programs.
 - Cold forged steel integrated molding. rust resistant durable double bearing double oil seal.
 - Cold running brushless motor, peak horsepower up to 4HP.

Specification:
Black
1500W
1.5L

Dimensions:
Length- 264mm , Width- 226mm , Height- 432mm

MS-2



- Features:**
- Professional single head commercial milk shakemachine
 - Pure cooper high speed motor
 - Anti-skid and shockproof base design
 - Equipped overloaded protector and PTThermostat
 - Variety speed for different drink mixing

Specification:
Black
180W
0.8L

Dimensions:
Length- 166mm , Width- 186mm , Height- 554mm
Length- 390mm , Width- 270mm , Height- 620mm
Length- 600mm , Width- 270mm , Height- 620mm

Its stable performance and balanced handling suit the repeated use typical of hotel stays, integrating naturally into the room's overall comfort provisions.

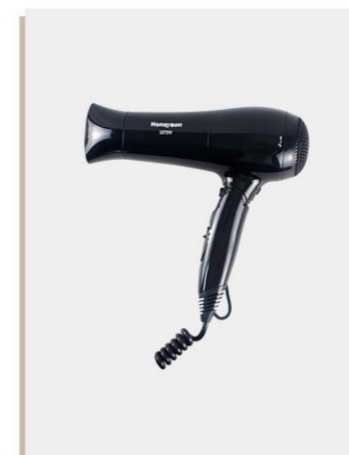


The hair dryer functions as a steady and ready-to-use element within the guestroom, supporting daily grooming with controlled airflow and reliable operation.



High-speed hair dryer

F2

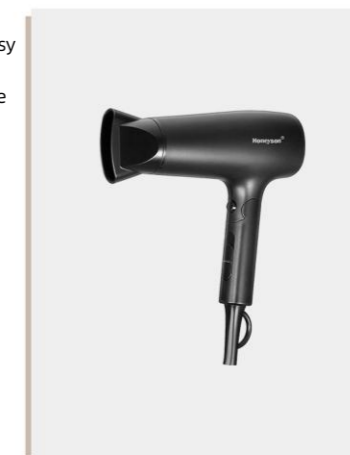


Features:
 ·Foldable handle,space-saving, easy to store
 ·Ionic function makes the hair more soft
 ·Three temperature settings + two speed settings

Specification:
 Black
 1800-2100W
 Removable nozzle and air filter for easy cleaning

Dimensions:
 Length- 215mm
 Width- 92mm
 Height- 265mm

F13

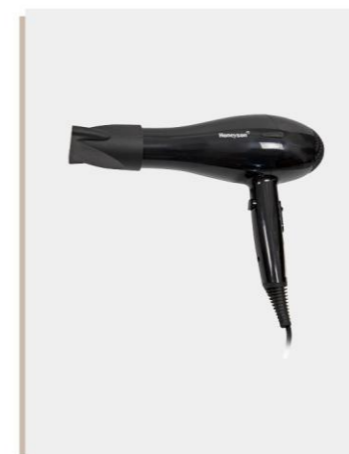


Features:
 ·Safety switch,special design for hotel use
 ·Three temperature including cold setting
 ·Slim styling nozzle for precise styling
 ·Foldable handle,space-saving,easy to store
 ·With loop for hang-up option

Specification:
 Black
 1800-2100W

Dimensions:
 Length- 180mm
 Width- 75mm
 Height- 210mm

F8

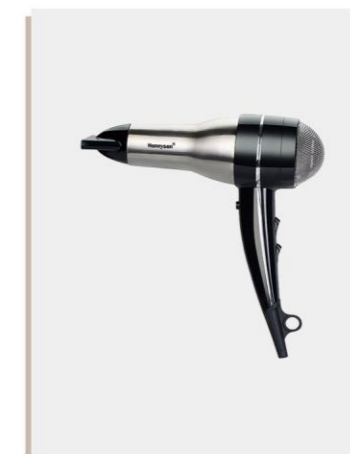


Features:
 ·Three temperature including cold setting
 ·Air speed: 16m/s
 ·UV resistant Abs
 ·Safety switch
 ·Over-heating protection
 ·Double motor design, high wind speed, high power.

Specification:
 Black
 1600W

Dimensions:
 Length- 235mm
 Width- 83mm
 Height- 200mm

F19

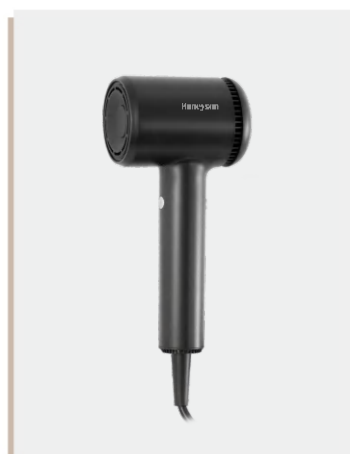


Features:
 ·2 gears of wind speed + 3 temperature settings
 ·Air speed: 16m/s
 ·Stainless steel material, high-end luxury
 ·Safety switch
 ·Over-heating protection
 ·Long life AC motor

Specification:
 Black
 1600W

Dimensions:
 Length- 210mm
 Width- 82mm
 Height- 230mm

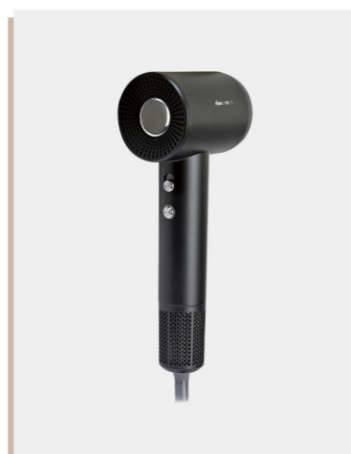
F25



Specification:
 ·1800W high-speed hair dryer, 110,000 RPM
 ·With one-touch cool shot
 ·Hot / Warm / Cool / Cycle
 ·Smart NTC temperature control
 ·Mini, lightweight body
 ·Negative ion care
 ·Self-cleaning, detachable filter
 ·Metal housing finish

Dimensions:
 Length- 97mm
 Width- 67mm
 Height- 210mm

F20

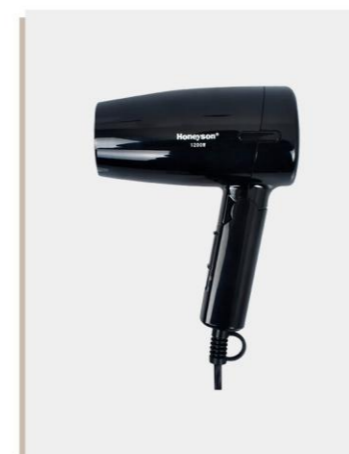


Features:
 ·Overheat protection
 ·CE/CB /GCC/Rohs approved
 ·30 million negative ion makes the hair more soft automatically,switch on automatically
 ·Intelligent heat control helps to protect hair shine

Specification:
 Black/White
 1600W
 2 precise speed settings and 4 heat settings

Dimensions:
 Length- 95mm
 Width- 65mm
 Height- 245mm

F12

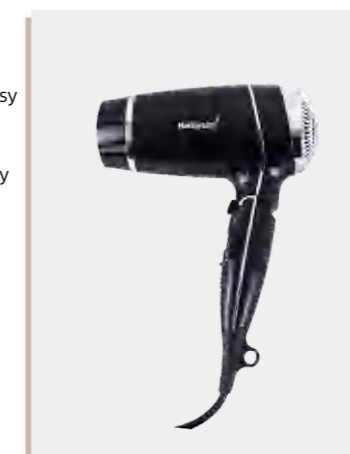


Features:
 ·ON /OFF button
 ·Two temperature/heat settings
 ·Foldable handle,space-saving, easy to store
 ·With loop for hang-up option
 ·Lustrous black finish in high quality

Specification:
 Black
 1200W

Dimensions:
 Length- 130mm
 Width- 65mm
 Height- 155mm

F9

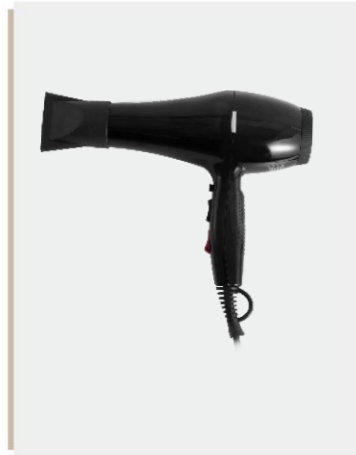


Features:
 ·Safety switch or On/off button for option
 ·Three temperature including cold setting
 ·Foldable handle
 ·Straight power cord with chrome finished rear cover
 ·Automatic power off when over heating
 ·Shining black finish in high quality

Specification:
 Black
 1800W

Dimensions:
 Length- 180mm
 Width- 80mm
 Height- 205mm

F23



Features:

- AC motor
- 2 concentrator nozzles and 1 diffuse
- 2 speed settings and 3 heat settings
- Cool shot function
- Durable multi-step switch

- Automatic overheating protection system
- High-temperature resistant PA housing

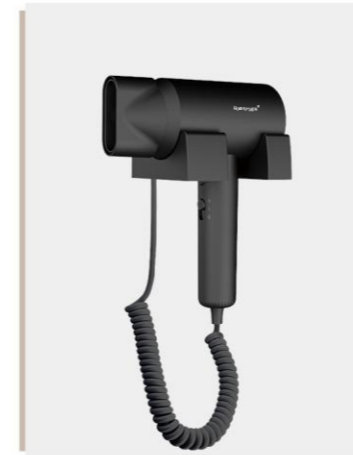
Specification:

Black

Dimensions:

Length- 230mm
Width- 55mm
Height- 210mm

F22WM



Features:

- Wall mounted,with base
- Three speed setting
- Hammer style handle
- Safety switch
- Overheat protection
- Wind speed:17m/s(21000rpm)

Specification:

Black/White
1600-1800W

Dimensions:

Length- 130mm
Width- 75mm
Height- 200mm

F21



Features:

- Three speed setting
- Foldable handle
- Overheat protection
- Wind speed:17m/s(21000rpm)

Specification:

Black/White
1600-1800W

Dimensions:

Length- 126mm
Width- 78mm
Height- 200mm

D08



Features:

- 2 speeds hot wind
- Air speed:14m/s
- Safety switch
- Over-heating protection

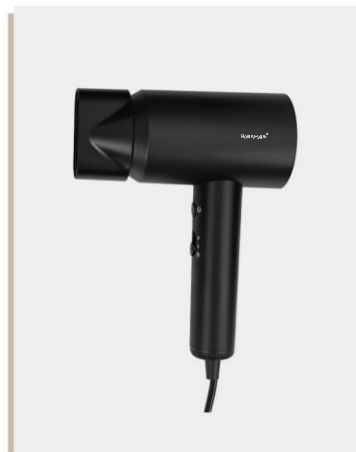
Specification:

Black/White
1600W

Dimensions:

| | |
|---------------|--------------------|
| Base: | Dryer body: |
| Length- 112mm | Length- 150mm |
| Width- 145mm | Width- 75mm |
| Height- 120mm | Height- 200mm |

F22



Features:

- Three speed setting
- Hammer style handle
- Safety switch
- Overheat protection
- Wind speed: 17m/s(21000 rpm)

Specification:

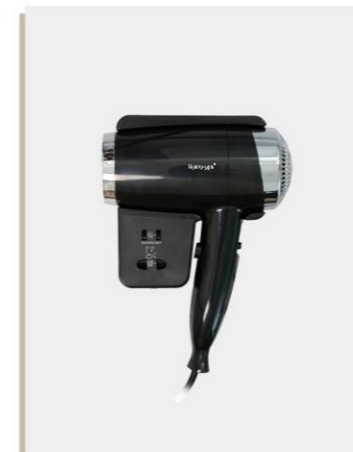
Black/White
1600-1800W

Dimensions:

Length- 130mm
Width- 75mm
Height- 200mm

Features:

D11



Features:

- 2 speeds+3 temperatures
- Air speed:16m/s
- Safety switch
- Over-heating protection

Specification:

Black/White
1800W

Dimensions:

| | |
|---------------|--------------------|
| Base: | Dryer body: |
| Length- 134mm | Length- 160mm |
| Width- 165mm | Width- 75mm |
| Height- 130mm | Height- 190mm |

D01A



Features:
 ·Wall mounted hair dryer which will be easy for management;
 ·Imported motor, stable quality and lower noise,
 ·Low repair rate;
 ·High- Low two speed for option;
 ·Automatically off if over-heat.

Specification:
 White
 1300W

Dimensions:
Base: Length- 180mm
 Width- 100mm
 Height- 170mm
Dryer body: Length- 125mm
 Width- 70mm
 Height- 180mm

D01B-1



Features:
 ·2 speed hot wind
 ·Safety switch
 ·Over heating protection

Specification:
 White
 1300W

Dimensions:
Base: Length- 180mm
 Width- 100mm
 Height- 170mm
Dryer body: Length- 125mm
 Width- 70mm
 Height- 180mm

D02B-1

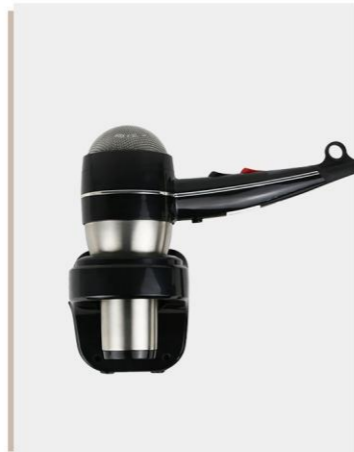


Features:
 ·2 speed hot wind
 ·Safety switch
 ·Over heating protection

Specification:
 White
 1300W

Dimensions:
Base: Length- 90mm
 Width- 120mm
 Height- 120mm
Dryer body: Length- 125mm
 Width- 70mm
 Height- 180mm

D10



Features:
 ·2 air speeds+3 temperatures settings
 ·Air speed: 16m/s
 ·stainless steel material, high-end luxury
 ·Safety switch
 ·Over-heating protection

Specification:
 Black
 1600W

Dimensions:
Base: Length- 112mm
 Width- 145mm
 Height- 120mm
Dryer body: Length- 210mm
 Width- 82mm
 Height- 230mm

D07-1/D07-2



Features:
 ·Safety switch
 ·Over heating protection
 ·Two speed hot wind + cool wind for option

Specification:
 Black/White
 1600W

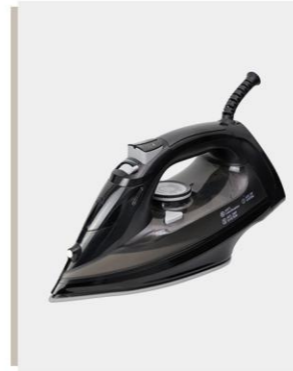
Dimensions:
Base: Length- 110mm
 Width- 140mm
 Height- 190mm
Dryer body: Length- 155mm
 Width- 77mm
 Height- 200mm



The ironing station offers guests a stable and familiar setup for everyday garment care. Its straightforward structure and reliable heat support regular use in the guestroom.



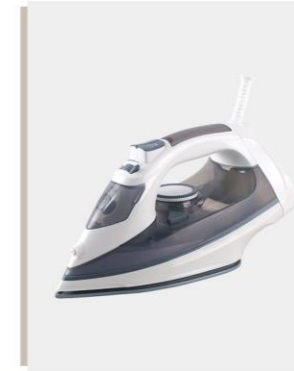
HS-05



- Features:**
- Hotel steam master, safe and powerful
 - Safe auto shut-off system:
 - horizontal position after 30 seconds
 - vertical position after 8 minutes
 - Ceramic soleplate
 - ON and READy indicator light
 - Dry/steam/spray/blast/anti-drip/self-clean functions

- Specification:**
- Black
 - 1800W
 - Length-292mm , Width-121mm , Height-145mm

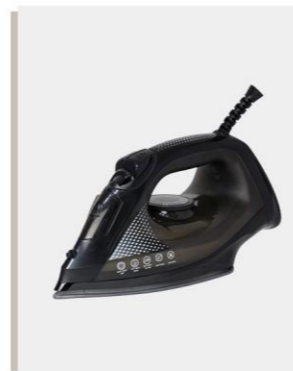
HS-06



- Features:**
- Hotel steam master, safe and powerful
 - Safe auto shut-off system horizontal position after 30 seconds vertical position after 8 minutes
 - Ceramic soleplate
 - Dry/steam/spray/blast/anti-drip/self-clean functions
 - ON and READy indicator light

- Specification:**
- White Grey
 - 1800W
 - Length-292mm , Width-121mm , Height-145mm

HS-16



- Features:**
- Hotel steam master, safe and powerful
 - Safe auto shut-off system horizontal position after 30 seconds vertical position after 8 minutes
 - Ceramic soleplate
 - Dry/steam/spray/blast/anti-drip
 - ON and READy indicator light

- Specification:**
- Black/Blue
 - 1600W
 - Length-292mm , Width-121mm , Height-145mm

HS-23



- Features:**
- Adjustable Temperature for different fabrics
 - Dry/Spray/Steam/Burst steam/ Self-cleaning Anti-calc/Anti-drip/Auto shut-off
 - Dial thermostat control
 - Temperature pilot light
 - Soft handle
 - CE,CB, GCC, ROHS Approved

- Specification:**
- Black
 - 2200W
 - Length-287mm , Width-120mm , Height-145mm

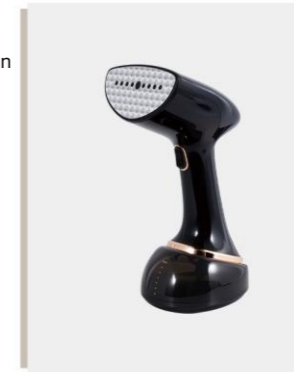
HS-08



- Features:**
- Dry/adjustable temperature settings for different fabrics/over heat safety protection
 - Temperature pilot light
 - Non-stick soleplate
 - Auto-shut off
 - horizontal position after 30 seconds vertical position after 8 minutes

- Specification:**
- White Grey
 - 1000W
 - Length-265mm , Width-103mm , Height-132mm

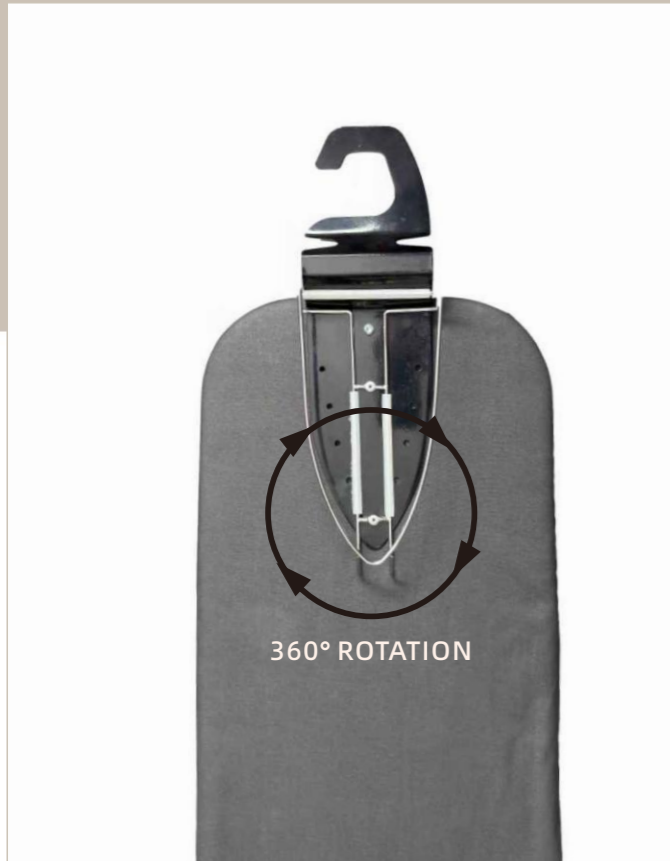
CYM-001



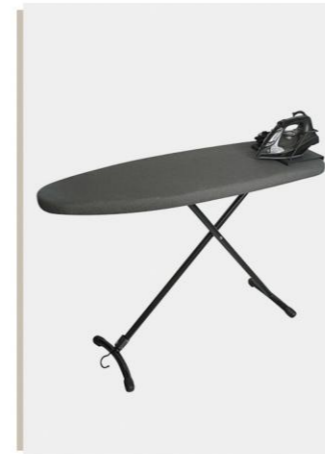
- Features:**
- Steam output: 25 ± 3 g/min
 - Portable and compact design
 - Powerful steam output for efficient wrinkle removal
 - 360 ml large water tank for extended use
 - Stable heating with 1500-1700W power
 - Designed for long service life

- Dimensions:**
- Length- 292mm , Width- 121mm Height- 145mm





IB05-1



Features:
compact mesh frame board, fits into small areas
easy to use, adjustable in height
matt black legs for extra stability
Surface treatment: powder coating
Thickness of felt: 7mm
Total max height: 85cm, 7 gears adjustable height

Specification:
Black/White
110 x 33cm

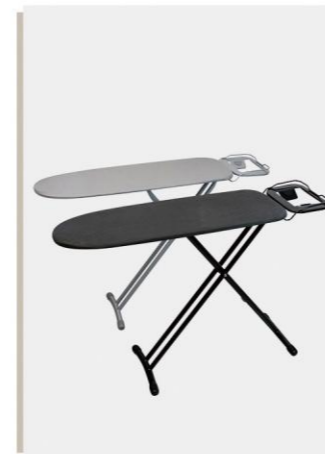
IB12



Ironing solutions

This is the hang-in-wardrobe style which includes a board, an organiser and an iron. It is space saving and easy in use. Compatible with Hs-05/06/16/23/08 22 x 20cm

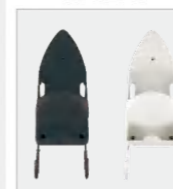
IB01



Features:
Surface treatment: powder coating
Thickness of felt: 10mm
7 gears adjustable in height
compact mesh frame board
Fits into small areas
Packing: each pc shrink wrapped, 4pcs/ctn

Specification:
Black/White
Panel Dimensions: 92 x 30cm
Overall Dimensions: 120 x 30cm

IB02-5



Wall mounted type ironing holder
Apply to hang ironing board
Compatible with Hs-05/06/23/16
white /Black
35 x 13.5cm

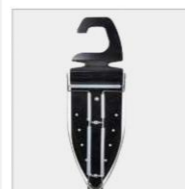
IB05



Features:
Surface treatment: powder coating
Thickness of felt: 7mm
Total max height: 85cm, 7 gears adjustable height
Packing: each pc shrink wrapped, 4pcs/ctn

Specification:
Black/White
110 x 33cm

IB05-3&5



Ironing holder hanging to wardrobe
Compatible with HS-05, HS-06
black
Size: W 13.5 x D 13 x H 29.5cm



IB01-1



Features:
 Surface treatment: powder coating
 Thickness of felt:8mm
 7 gears adjustable in height
 compact mesh frame board
 Fits into small areas
 Packing: each pc shrink wrapped,4pcs/ctn

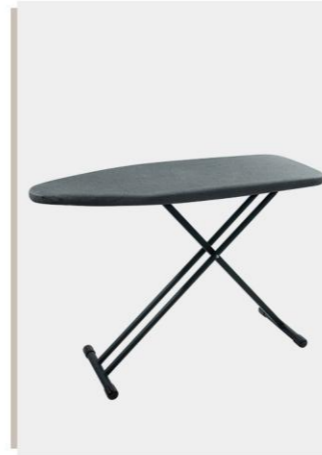
Specification:
 Black
 90 x 30cm

IB22



Wall mounted type ironing holder
 Apply to hang ironing board
 Compatible with Hs-05/06/16/23/08
 black
 1pc in a polybag,10pcs/ctn

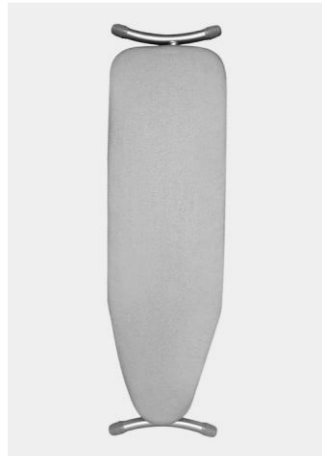
IB09



Features:
 Durable welded frame with a heavy-duty mesh top
 Black powder-coated steel for a sleek, long-lasting finish
 Flame-retardant cover with a soft cotton blend surface
 Thick 8mm foam padding enhances comfort and efficiency
 Secure elastic straps and non-slip feet ensure a firm ironing experience

Specification:
 Black
 120 x 40cm

IB03



Features:
 Surface treatment: powder coating
 Thickness of felt:10mm
 85cm,7 gears adjustable height
 Leg tube dia:28mm&32mm
 Packing: each pc shrink wrapped,4pcs/ctn

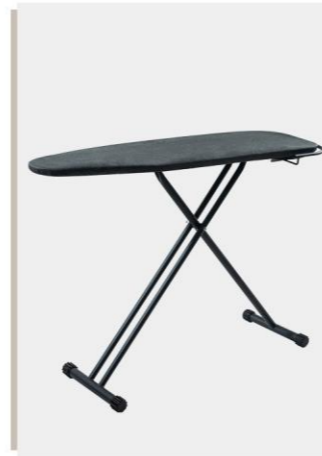
Specification:
 Silver grey
 110 x 33cm

IB03-3&5



Ironing holder with anti-theft spare part
 Apply to hang ironing board into hotel wardrobe
 Compatible with HS-05,HS-06
 silver
 W14xD13xH42cm

IB10



Features:
 Sturdy welded frame with a heavy-gauge mesh top
 Tubular steel frame with a black powder-coated finish
 Heavy-dutyflame-retardant cover made with mostly cotton material
 Thick fiber padding ensures smooth and easy ironing
 Elastic straps provide a secure, non-slip fit
 Safety lock for secure fold-up and easy storage



Specification:
 Black
 110 x 40cm

IB05&IB04-5



Features:
 Surface treatment: powder coating
 Thickness of felt:7mm
 Total max height:85cm,7 gears adjustable height
 Packing: each pc shrink wrapped,4pcs/ctn
 Leg tube dia:28mm&32mm

Specification:
 Black
 110 x 33cm

IB04-5



Ironing holder hanging to wardrobe
 black
 W13xD14xH42cm



The minibar keeps beverages at a consistent, pleasant temperature throughout the stay.



Quiet running and reliable cooling make it a discreet part of the room, always ready without drawing attention. Its steady performance keeps refreshments perfectly chilled, enhancing comfort throughout the guest's stay.





HS-25A



Features:
 ·Automatically evaporating drain water
 ·Internal LED light
 ·Insulation:Cyclopentane

Specification:
 Black
 25L
 220-240V 50/60Hz 50W
 ECO Temp: 6.5-15°C

Dimensions:
 Width- 380mm
 Depth- 370mm
 Height- 490mm

HS-25G



Features:
 ·Automatically evaporating drain water
 ·Internal LED light
 ·Insulation:Cyclopentane

Specification:
 Black
 25L
 220-240V 50/60Hz 50W
 ECO Temp: 10-18°C

Dimensions:
 Width- 380mm
 Depth- 370mm
 Height- 490mm

HS-30A



Features:
 ·Automatically evaporating drain water
 ·Internal LED light
 ·Insulation:Cyclopentane

Specification:
 Black
 30L
 220-240V 50/60Hz 48W
 ECO Temp: 6-12°C

Dimensions:
 Width- 420mm
 Depth- 400mm
 Height- 485mm

HS-30G



Features:
 ·Automatically evaporating drain water
 ·Internal LED light
 ·Insulation:Cyclopentane

Specification:
 Black
 30L
 220-240V 50/60Hz 48W
 ECO Temp: 10-18°C

Dimensions:
 Width- 420mm
 Depth- 400mm
 Height- 485mm

SEMI-CONDUCTOR MINI BAR

BC-20A



Features:
 ·Automatically evaporating drain water
 ·Internal LED light
 ·Insulation:Cyclopentane

Specification:
 Black
 20L
 220-240V 50/60Hz55W
 ECO Temp: 4.5-15°C

Dimensions:
 Width- 400mm
 Depth- 422mm
 Height- 352mm

BC-20BF



Features:
 ·Automatically evaporating drain water
 ·Internal LED light
 ·Insulation:Cyclopentane

Specification:
 Black
 20L
 220-240V 50/60Hz 55W
 ECO Temp: 10-15°C

Dimensions:
 Width- 400mm
 Depth- 422mm
 Height- 352mm

HS-42A



Features:
 ·Automatically evaporating drain water
 ·Internal LED light
 ·Insulation:Cyclopentane

Specification:
 Black
 42L
 220-240V 50/60Hz 48W
 N.W.:10.2kg

Dimensions:
 Width- 420mm
 Depth- 420mm
 Height- 515mm

HS-42G



Features:
 ·Automatically evaporating drain water
 ·Internal LED light
 ·Insulation:Cyclopentane

Specification:
 Black
 42L
 220-240V 50/60Hz 48W
 ECO Temp: 12-15°C

Dimensions:
 Width- 420mm
 Depth- 420mm
 Height- 515mm



BC-30C



Features:
 ·Automatically evaporating drain water
 ·Internal LED light
 ·Insulation:Cyclopentane

Specification:
 Black
 30L
 220-240V 50/60Hz 50W
 ECO Temp: 6.5-15°C

Dimensions:
 Width- 420mm
 Depth- 395mm
 Height- 490mm

BC-30C-G



Features:
 ·Automatically evaporating drain water
 ·Internal LED light
 ·Insulation:Cyclopentane

Specification:
 Black
 30L
 220-240V 50/60Hz 50W
 ECO Temp: 10-18°C

Dimensions:
 Width- 420mm
 Depth- 395mm
 Height- 490mm

BC-40CP(BC-42A)



Features:
 ·Automatically evaporating drain water
 ·Reversible door design
 ·Internal LED light

Specification:
 Black
 40L
 220-240V 50/60Hz 48W
 ECO Temp: 10-18°C

Dimensions:
 Width- 420mm
 Depth- 420mm
 Height- 575mm

BC-40CP-G(BC-42B)



Features:
 ·Margic shelf design, convenient for storing different size of drinks
 ·Reversible door design
 ·Internal LED light

Specification:
 Black
 40L
 220-240V 50/60Hz 48W
 ECO Temp: 5-15°C

Dimensions:
 Width- 420mm
 Depth- 420mm
 Height- 575mm

THERMO ABSORPTION MINI BAR

BC-25A



Features:
 ·Automatically evaporating drain water
 ·Internal LED light
 ·Insulation:Cyclopentane

Specification:
 Black
 25L
 220-240V 50/60Hz 50W
 ECO Temp: 5-15°C

Dimensions:
 Width- 380mm
 Depth- 370mm
 Height- 490mm

BC-25A-G



Features:
 ·Automatically evaporating drain water
 ·Internal LED light
 ·Insulation:Cyclopentane

Specification:
 Black
 25L
 220-240V 50/60Hz 50W
 ECO Temp: 10-18°C

Dimensions:
 Width- 380mm
 Depth- 370mm
 Height- 490mm

CB-20SA



Features:
 ·Automatically evaporating drain water
 ·Internal LED light
 ·Insulation:Cyclopentane

Specification:
 Black
 20L
 220-240V 50/60Hz 58W
 ECO Temp: 6-15°C

Dimensions:
 Width- 360mm
 Depth- 390mm
 Height- 430mm

SC-20SA



Features:
 ·Automatically evaporating drain water
 ·Internal LED light
 ·Insulation:Cyclopentane

Specification:
 Black
 20L
 220-240V 50/60Hz 58W
 ECO Temp: 12-16°C

Dimensions:
 Width- 360mm
 Depth- 390mm
 Height- 440mm

CB-30SA

Features:
 ·No compressor,no vibration,
 no CFC, No noise
 ·Reversible door design
 ·Internal LED light
 ·Refrigeration:R600a

Specification:
 Black
 30L
 100V-127V,220V-240V 63W
 ECO Temp: 6-15°C

Dimensions:
 Width- 385mm
 Depth- 420mm
 Height- 475mm

SC-30SA

Features:
 ·No compressor,no vibration,
 no CFC, No noise
 ·Reversible door design
 ·Internal LED light
 ·Refrigeration:R600a

Specification:
 Black
 30L
 100V-127V,220V-240V 63W
 ECO Temp: 12-16°C

Dimensions:
 Width- 385mm
 Depth- 420mm
 Height- 485mm

CB-35SA

Features:
 ·Automatically evaporating
 drain water
 ·Internal LED light
 ·Insulation:Cyclopentane

Specification:
 Black
 35L
 220-240V 50/60Hz 63W
 ECO Temp: 8°C

Dimensions:
 Width- 383mm
 Depth- 455mm
 Height- 485mm

SC-35SA

Features:
 ·Automatically evaporating
 drain water
 ·Internal LED light
 ·Insulation:Cyclopentane

Specification:
 Black
 35L
 220-240V 50/60Hz 63W
 ECO Temp: 12°C

Dimensions:
 Width- 383mm
 Depth- 455mm
 Height- 485mm

**CB-40SA**

Features:
 ·Automatically evaporating
 drain water
 ·Internal LED light
 ·Insulation:Cyclopentane

Specification:
 Black
 40L
 220-240V 50/60Hz 55W
 ECO Temp: 5-12°C

Dimensions:
 Width- 400mm
 Depth- 420mm
 Height- 560mm

SC-40SA

Features:
 ·Automatically evaporating
 drain water
 ·Internal LED light
 ·Insulation:Cyclopentane

Specification:
 Black
 40L
 220-240V 50/60Hz 63W
 ECO Temp: 12-17°C

Dimensions:
 Width- 400mm
 Depth- 415mm
 Height- 570mm

COMPRESSOR FRIDGE**BC-30L**

Features:
 ·Temperature 0-10 degree
 ·Refrigerant: R600a

Specification:
 Black
 30L
 220-240V 50/60Hz 50W
 100-120V 50W

Dimensions:
 Width- 425mm
 Depth- 420mm
 Height- 490mm

SC-30L

Features:
 ·Automatically evaporating
 drain water
 ·Internal LED light
 ·Insulation:Cyclopentane

Specification:
 Black
 30L
 220-240V 50/60Hz 70W
 Noise:40dB
 ECO Temp: 0-10°C

Dimensions:
 Width- 405mm
 Depth- 415mm
 Height- 493mm

BC-40A**Features:**

- Compressor cooling system
- Temperature range: 0-10°C
- R600a eco-friendly refrigerant
- Low noise level: 45 dB
- Manual thermostat with auto defrost

Specification:

Black
40L
220-240V 50/60Hz 70W
1.68 kWh / 24h

Dimensions:

Width- 405mm
Depth- 415mm
Height- 585mm

SC-42L**Features:**

- Automatically evaporating drain water
- Internal LED light
- Insulation:Cyclopentane

Specification:

Black
42L
220-240V 50/60Hz 75W
Noise:40dB
ECO Temp: 0-10°C

Dimensions:

Width- 405mm
Depth- 415mm
Height- 585mm

**DRAWER STYLE****BC-50L****Features:**

- temperature 0-10 degree
- Color: silver or black for option 2 glass shelves
- Refrigerant: R600a

Specification:

Silver
50L
220V-240V,50Hz-60Hz 50W
100-120V 50W

Dimensions:

Width- 445mm
Depth- 480mm
Height- 520mm

SC-50L**Features:**

- Automatically evaporating drain water
- Internal LED light
- Insulation:Cyclopentane

Specification:

Black
50L
220-240V 50/60Hz 75W
Noise:40dB
ECO Temp: 0-10°C

Dimensions:

Width- 445mm
Depth- 465mm
Height- 520mm

CB-21SA**Features:**

- Automatically evaporating drain water
- Internal LED light
- Insulation:Cyclopentane

Specification:

Black
21L
220-240V 50/60Hz 63W
ECO Temp: 8°C

Dimensions:

Width- 385mm
Depth- 455mm
Height- 375mm

CB-45SA**Features:**

- Automatically evaporating drain water
- Internal LED light
- Insulation:Cyclopentane

Specification:

Black
45L
220-240V 50/60Hz 58W
Energy: F grade,0.6kwh/24h
ECO Temp: 6-15°C

Dimensions:

Width- 490mm
Depth- 455mm
Height- 425mm

BC-75L**Features:**

- Net fridge compartment: 70Lwith temperature 0-10 degree
- Net freezer compartment: 5L with temperature -3degree

Specification:

silver
75L
220V-240V,50Hz-60Hz 50W
100-120V 55W

Dimensions:

Width- 445mm
Depth- 480mm
Height- 760mm

SC-75L**Features:**

- Automatically evaporating drain water
- Internal LED light
- Insulation:Cyclopentane

Specification:

Black
75L
220-240V 50/60Hz 75W
ECO Temp: 0-10°C

Dimensions:

Width- 445mm
Depth- 470mm
Height- 760mm

XC-50A**Features:**

- No compressor,no noise,no freon
- Automatically evaporating drain water;
- Internal LED light
- Insulation:Cyclopentane

Specification:

Black
50L
220-240V 50/60Hz 80W
ECO Temp: 0-8°C

Dimensions:

Width- 380mm
Depth- 370mm
Height- 490mm



ABSORPTION MINI BAR

XC-18B



Features:

- No mechanical movement in cooling parts, long life
- Using electronic thermostat & IC chip control, auto

Specification:
Black
18L
220-240V 50/60Hz 65W
ECO Temp: 5-12°C

Dimensions:
Width- 370mm
Depth- 350mm
Height- 400mm

XC-25A



Features:

- No mechanical movement in cooling parts, long life
- Internal LED light

Specification:
Black
25L
220-240V 50/60Hz 65W
ECO Temp: 0-8°C

Dimensions:
Width- 400mm
Depth- 400mm
Height- 450mm

XC-25B



Features:

- No mechanical movement in cooling parts, long life
- Internal LED light

Specification:
Black
25L
220-240V 50/60Hz 65W
ECO Temp: 5-12°C

Dimensions:
Width- 420mm
Depth- 400mm
Height- 500mm

XC-30A



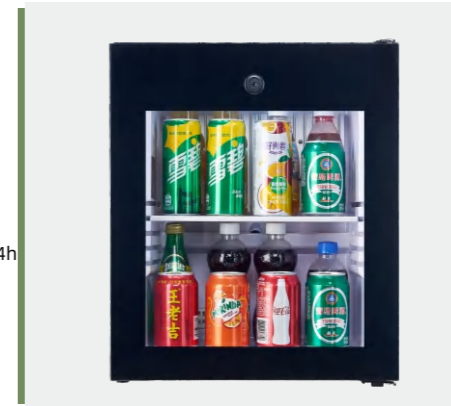
Features:

- Automatically evaporating drain water
- Internal LED light
- Insulation: Cyclopentane

Specification:
Black
30L
220-240V 50/60Hz 65W
Energy: G grade, 0.61kwh/24h
ECO Temp: 0-8°C

Dimensions:
Width- 400mm
Depth- 420mm
Height- 480mm

XC-30B



Features:

- Automatically evaporating drain water
- Internal LED light
- Insulation: Cyclopentane

Specification:
Black
30L
220-240V 50/60Hz 65W
Energy: G grade, 0.76kwh/24h
ECO Temp: 5-12°C

Dimensions:
Width- 400mm
Depth- 415mm
Height- 480mm

XC-40A



Features:

- Automatically evaporating drain water
- Internal LED light
- Insulation: Cyclopentane

Specification:
Black
40L
220-240V 50/60Hz 65W
Energy: 0.62kwh/24h
ECO Temp: 0-8°C

Dimensions:
Width- 400mm
Depth- 440mm
Height- 550mm

XC-40B



Features:

- Automatically evaporating drain water
- Internal LED light
- Insulation: Cyclopentane

Specification:
Black
40L
220-240V 50/60Hz 65W
Energy: 0.78kwh/24h
ECO Temp: 5-12°C

Dimensions:
Width- 400mm
Depth- 435mm
Height- 550mm

XC-60A



Features:

- Automatically evaporating drain water
- Internal LED light
- Insulation: Cyclopentane

Specification:
Black
60L
220-240V 50/60Hz 80W
Energy: 1.0kwh/24h
ECO Temp: 0-8°C

Dimensions:
Width- 485mm
Depth- 500mm
Height- 560mm

XC-60B



Features:

- Automatically evaporating drain water
- Internal LED light
- Insulation: Cyclopentane

Specification:
Black
60L
220-240V 50/60Hz 80W
Energy: 1.15kwh/24h
ECO Temp: 5-12°C

Dimensions:
Width- 485mm
Depth- 495mm
Height- 560mm

The safe box provides a secure place for guests to store personal belongings.

Clear controls and a firm structure make it easy to use and dependable for daily hotel needs.



E2042A

**Specification:**

- 18mm solid steel bolt for maximum security and durability.
- Low battery indicator
- Powered by 4 x AA
- 3-6 digit quest code
- 6 digit override master code/mechanical key override
- 5 minutes freeze system in case of wrong code for 4 times.

Dimensions:

Width- 420mm
Depth- 370mm
Height- 200mm

E2042G

**Specification:**

- Solid, arc-welded heavy-gauge steel construction.
- 18mm solid steel bolt for maximum security and durability.
- Low battery indicator
- Powered by 4 x AA.
- User management: 3-6 digit guest code.
- Hotelmanagement: 6 digit override master code/mechanical key override

Dimensions:

Width- 420mm
Depth- 370mm
Height- 200mm

E2042B

**Specification:**

- 18mm solid steel bolt for maximum security and durability.
- Low battery indicator
- Powered by 4 x AA
- 3-6 digit quest code
- 6 digit override master code/override mechanical key
- 5 minutes freeze system in case of wrong code for 4 times.

Dimensions:

Width- 420mm
Depth- 370mm
Height- 200mm

2042F-8

**Specification:**

- Digital display, electronic keypad
- User management: 3-6 digit quest code
- Hotelmanagement: 6 digit override master code/mechanical key override
- Pre-drilled mounting holes
- 15 minutes freeze system in case of wrong code for 4 times, meanwhile password hiding function for option

Dimensions:

Width- 420mm
Depth- 360mm
Height- 190mm

E2042U

**Specification:**

- Solid, arc-welded heavy-gauge steel construction.
- 18mm solid steel bolt for maximum security and durability.
- Low battery indicator
- Powered by 4 x AA
- 5 minutes freeze system in case of wrong code for 4 times
- Audit trail 1000 records

Dimensions:

Width- 420mm
Depth- 370mm
Height- 200mm

E2042MJ

**Specification:**

- Solid, arc-welded heavy-gauge steel construction.
- 18mm solid steel bolt for maximum security and durability.
- Low battery indicator
- Powered by 4 x AA
- 5 minutes freeze system in case of wrong code for 4 times
- Audit trail 1000 records

Dimensions:

Width- 420mm
Depth- 370mm
Height- 200mm

E2042H

**Specification:**

- Solid, arc-welded heavy-gauge steel construction.
- 18mm solid steel bolt for maximum security and durability.
- Low battery indicator
- Powered by 4 x AA
- 5 minutes freeze system in case of wrong code for 4 times

Dimensions:

Width- 420mm
Depth- 370mm
Height- 200mm

E2042M

**Specification:**

- Solid, arc-welded heavy-gauge steel construction.
- 18mm solid steel bolt for maximum security and durability.
- Low battery indicator
- Powered by 4 x AA
- 5 minutes freeze system in case of wrong code for 4 times
- Audit trail 1000 records

Dimensions:

Width- 420mm
Depth- 370mm
Height- 200mm

E2042BJ

**Specification:**

- Solid, arc-welded heavy-gauge steel construction.
- 18mm solid steel bolt for maximum security and durability.
- Low battery indicator
- Powered by 4 x AA
- 5 minutes freeze system in case of wrong code for 4 times
- Audit trail 1000 records

Dimensions:

Width- 420mm
Depth- 370mm
Height- 200mm

E2043

**Specification:**

- Solid, arc-welded heavy-gauge steel construction.
- 18mm solid steel bolt for maximum security and durability.
- Low battery indicator
- Powered by 4 x AA
- 5 minutes freeze system in case of wrong code for 3 times
- Audit trail 200 records

Dimensions:

Width- 420mm
Depth- 350mm
Height- 200mm

E2042V

**Specification:**

- Solid, arc-welded heavy-gauge steel construction.
- 18mm solid steel bolt for maximum security and durability.
- Low battery indicator
- Powered by 4 x AA
- 5 minutes freeze system in case of wrong code for 4 times

Dimensions:

Width- 420mm
Depth- 370mm
Height- 200mm

E2043C

**Specification:**

- Side Opening (standard: Right Hinge)
- Audit Trail: Records up to 200 entries.
- ESD Anti-static: >6000V.
- Lock Mechanism: Solid steel double bolt lock for maximum security and durability.
- Buttons: ADA silicone buttons with blind contacts
- Display: LED screen (Blue digital).

Dimensions:

Width- 445mm
Depth- 380mm
Height- 200mm

E2043B

**Specification:**

- Solid, arc-welded heavy-gauge steel construction. powder coating finish.
- 18mm solid steel bolt for maximum security and durability.
- Low battery level alert
- 5 minutes freeze system in case of wrong code for 3 times.
- Audit Trail 200 record

Dimensions:

Width- 420mm
Depth- 370mm
Height- 200mm

E2317

**Specification:**

- Digital display, electronic keypad
- Fully automatic electronic lock;
- Three ways to open the box:
 - User password (3-6 digits);
 - Hotel management code to facilitate management;
 - Pre-drilled mounting holes

Dimensions:

Width- 230mm
Depth- 170mm
Height- 170mm

CT-2037MJ

**Specification:**

- Solid, arc-welded heavy-gauge steel construction. Orange peel powder coating finish
- 18mm solid steel bolt for maximum security and durability.
- Pre-drilled mounting holes
- User management: 3-6 digit guest code.

Dimensions:

Width- 370mm
Depth- 420mm
Height- 200mm

CT-2037BJ

**Specification:**

- Solid, arc-welded heavy-gauge steel construction. Orange peel powder coating finish
- 18mm solid steel bolt for maximum security and durability.
- Pre-drilled mounting holes
- Powered by 4 x AA. Automatic low battery level alert. (battery not included)

Dimensions:

Width- 370mm
Depth- 420mm
Height- 200mm

D1541N

**Specification:**

- Solid, arc-welded heavy-gauge steel construction.
- 18mm solid steel bolt for maximum security and durability.
- Pre-drilled mounting holes.
- Powered by 4 x AA.
- 5 minutes freeze system in case of wrong code for 3 times

Dimensions:

Width- 410mm
Depth- 350mm
Height- 150mm

D1541MJ

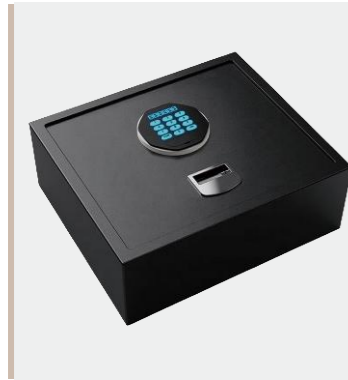
**Specification:**

- Solid, arc-welded heavy-gauge steel construction.
- 18mm solid steel bolt for maximum security and durability.
- Pre-drilled mounting holes.
- Powered by 4 x AA
- 5 minutes freeze system in case of wrong code for 4 times
- Audit trail 1000 records

Dimensions:

Width- 410mm
Depth- 350mm
Height- 150mm

D1541BJ

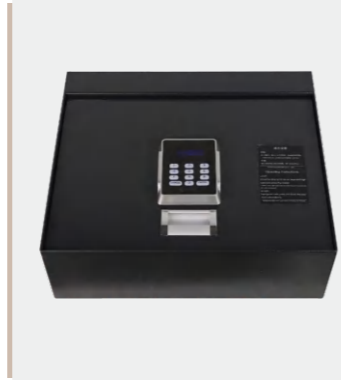
**Specification:**

- Solid, arc-welded heavy-gauge steel construction.
- 18mm solid steel bolt for maximum security and durability.
- Low battery indicator
- Powered by 4 x AA
- 5 minutes freeze system in case of wrong code for 4 times
- Audit trail 1000 records

Dimensions:

Width- 410mm
Depth- 350mm
Height- 150mm

E4035B

**Specification:**

- Equipped with decoding functionality
- Flash memory capable of storing up to 200 records
- EU CE certified and RoHS compliant
- ESD anti-static protection exceeding 6000V
- Features ADA-compliant silicone buttons with tactile markings for the visually impaired

Dimensions:

Width- 400mm
Depth- 350mm
Height- 150mm

E4035C

**Specification:**

- Upward-opening with single pneumatic bar
- Flash memory capable of storing up to 200 records
- ESD anti-static protection exceeding 6000V
- Accommodates upto 15-inch tablet computers
- Comes with a mechanical key

Dimensions:

Width- 400mm
Depth- 350mm
Height- 150mm

E2043D

**Specification:**

- Side opening (standard: Right Hinge)
- Decoding Function included
- Flash Memory (stores up to 200 records)
- EU CE Certification Compliant, RoHS Compliant;
- ESD Anti-static >6000V; solid steel Double Bolt Locking Mechanism

Dimensions:

Width- 445mm
Depth- 380mm
Height- 200mm

E4035

**Specification:**

- Solid, arc-welded heavy-gauge steel construction.
- 18mm solid steel bolt for maximum security and durability.
- Pre-drilled mounting holes
- Powered by 4 x AA.
- 5 minutes freeze system in case of wrong code for 3 times
- can fit 15" laptop

Dimensions:

Width- 400mm
Depth- 350mm
Height- 150mm

CEU

**Specification:**

- A reinforced hotel safe with electronic PIN access and CEU audit support, offering secure emergency opening and reliable management control.



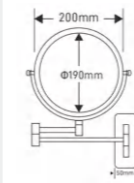


A focused mirror for close-up grooming tasks, appointed to support accuracy and comfort in the guestroom. Its defined magnification and stable form offer dependable clarity for daily use.

HT-66A/HT-66



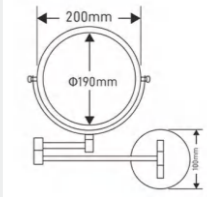
Specification:
Dia:6",8"
3 x magnification,
Double side



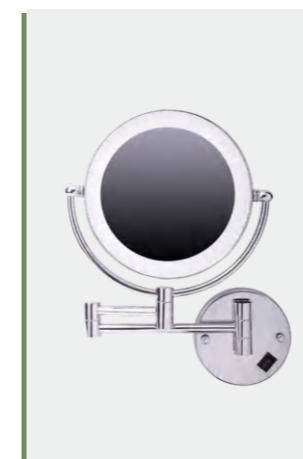
HT-67A/HT-67



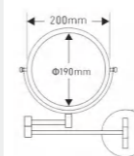
Specification:
Dia:6",8"
3 x magnification,
Double side



HS-519



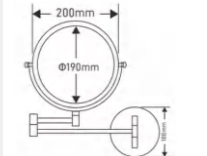
Specification:
Dia:8"
Thickness:20mm
LED:60000 hrs
Votage:110V/220V
3 x magnification,
double side



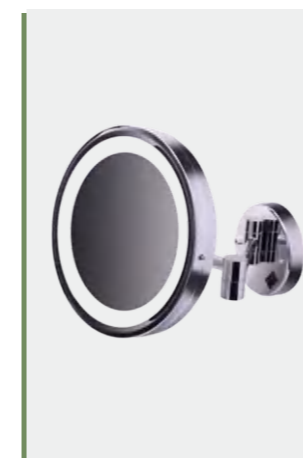
HS-529



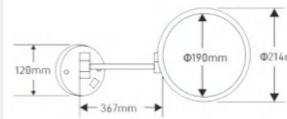
Specification:
Dia:8.5"
Thickness:55mm
Votage:110V/220V
LED:60000 hrs
3 x magnification,
Double side



HS-509/HS-509A



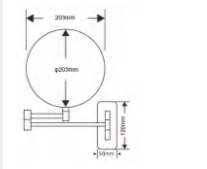
Specification:
Dia: 8.5"/8"
LED:60000 hrs
Votage:110V/220V
3 x magnification,
single side



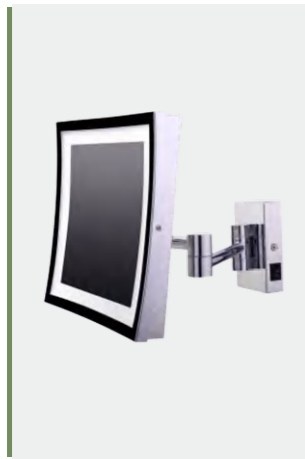
HS-M0618



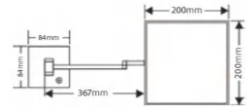
Specification:
Dia:8"
3 X MAGNIFICATION



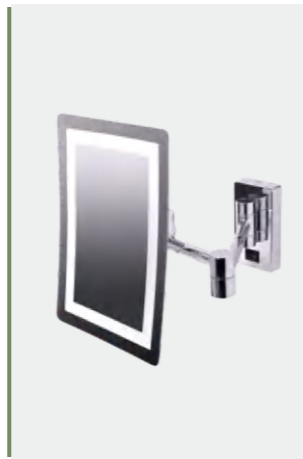
HS-539



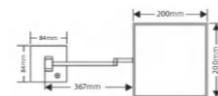
Specification:
 size:200x200mm
 LED:60000 hrs
 Votage:110V/220V
 3 x magnification,
 single side



HS-559



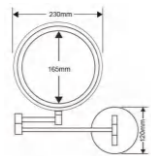
Specification:
 size:212 x132mm
 LED:60000 hrs
 Votage:110V/220V
 3 x magnification,
 single side



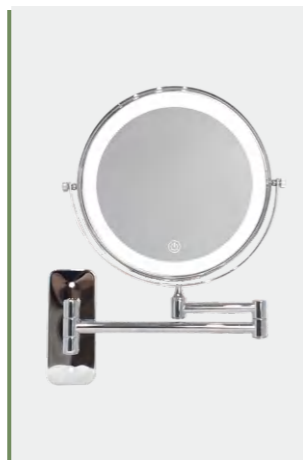
HS-M1808



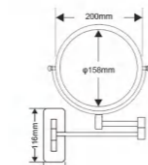
Specification:
 Dia:9"
 3 X MAGNIFICATION
 Thickness:20mm
 LED:WITH LED



HS-M0820



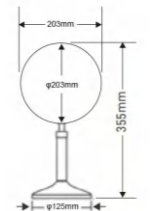
Specification:
 Dia:8"
 Double Side
 3 x magnification
 LED lighted mirror
 with 3 colors light



HS-M6018



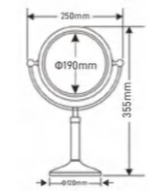
Specification:
 Dia:8"
 3 X MAGNIFICATION



HT-726A/HT-726



Specification:
 Dia:6",8"
 3 x magnification,
 Double side



H-01



Features:
 ·LCD Size:61*25mm
 ·Max Capacity:200KG
 ·Graduation:0.1kg/0.2lb/0.2lb
 (1lb,≥20st)
 ·2*AAA batteriescan fit in
 ·Built-in high precision induction
 system;
 ·Low battery and overload indication

Specification:
 Glass/White

Dimensions:
 Length- 305mm
 Width- 245mm
 Height- 25mm

H-02



Features:
 ·Dimension:312*285*23mm
 ·LCD Display Size: 73*33mm
 ·Material:6mm tempered glass
 ·Max Capacity: 180KG/396LB
 ·Unit:KG /LB
 ·Built-in high precision induction
 system;
 ·Auto on/off function;
 ·Low battery and overload indication
 ·Operated by 2xAAA batteries

Specification:
 Black

Dimensions:
 Length- 312mm
 Width- 285mm
 Height- 23mm

H-03



- Features:**
- 5mm toughened glass weighing platform
 - Built-in high precision induction system;
 - KG and LB selector
 - Auto on/Auto off function;
 - Low battery and overload indication
 - Operated by 1 lithium cell battery

Specification:
Silver
180KG/396LB
LCD Size: 61*25mm

Dimensions:
Length- 312mm
Width- 285mm
Height- 20mm

H-04



- Features:**
- With 5MM Tempered Glass With S/S Platform
 - Blue Backlight
 - Built in high precision induction sensor
 - Low Battery/Overload Indication
 - Automatic Zero Restting

Specification:
Glass
Tempered Glass, Stainless Steel,ABS..
Max Weight
180KG/396LB
2 *1.5V AAA Batteries(Not included)

Dimensions:
Length- 300mm
Width- 300mm
Height- 23mm

H05



- Features:**
- Full Glass platform
 - Equipped with 4 high precision sensors system.
 - Capacity:180kg.
 - Graduation: 0.1kg
 - LED display ,SIZE:80*30mm
 - Automatic switch on/off
 - Low Battery/Overload indication
 - Battery: 2*1.5V AAA (do not provide)

Specification:
Black

Dimensions:
Length- 300mm
Width- 300mm
Height- 24.5mm

GL-D1M



- Features:**
- LCD Size: 73*33mm with blue backlight
 - Material:6mm tempered glass.
 - Max Weight: 180KG/396LB
 - Equipped with High Presion Strain
 - Gauge Sensors System
 - Low Battery /Overload indication.
 - KG and LB selector
 - Operated by 2xAAA batteries

Specification:
Glass

Dimensions:
φ- 330mm
Height- 35mm

HS-D3A



- Features:**
- battery-free(Magic engine system, just simply push or step onto the power button to generate power for weighing)
 - Four high-precision sensor
 - Low battery (LO) and overload indication (Err)

Specification:
Black
180KG/396LB
LCD size:81*42mm
KG/LB

Dimensions:
Length- 280mm
Width- 280mm
Height- 30mm

GL-D1102



- Features:**
- Tempered Glass platform
 - Equipped with high precision sensors
 - Low Battery/Overload indication.
 - Automatic Zero Restting.
 - Tempered Glass,ABS
 - Power supply: 1*lithium button cell (do not provide)

Specification:
Glass
LCD display size:61*25mm
Division: 100G
Max Weight: 180KGS

Dimensions:
Length- 280mm
Width- 280mm
Height- 23mm



GPX-110X



- Specification:**
- Material:stainless steel
 - Stylish design for guest room usage
 - Stainless steel and powder coated finishing
 - Swing lid for tidy look
 - Rubber rim at the bottom for floor protection
 - Thickness: 0.4mm
 - Capacity: 10L
 - Silver/Black

Dimensions:
200 x 310mm

RB-01



Specification:
 ·10L double wall waste bin, round shape
 ·Outer: wrapped with PU leather (color and leather style are optional)
 ·Powder coated metal inner insert
 ·With chrome ring on top(Ring color can be customized)
 ·Capacity: 10L

Dimensions:
 225 x H270mm

OB-02



Specification:
 ·10L double wallr waste bin,oval shape
 ·Outer: wrapped with PU leather(color and leather style are optional)
 ·Powder coated metalinner insert
 With chrome ring on top(Ring color can be customized)
 ·Capacity: 10L

Dimensions:
 Width- 225mm
 Depth- 195mm
 Height- 270mm

RD-17



Specification:
 ·Outer: wrapped with PU leather
 ·Inside with 2 plastic buckets
 ·Capacity:2X6L
 ·Color: optional color

Dimensions:
 Length- 280mm
 Width- 197mm
 Height- 370mm

RD-18



Specification:
 ·Double layer
 ·Round shape
 ·Outer: wrapped with PU leather
 ·Inside with 2 plastic buckets
 ·Capacity:2X5L
 ·Color: optional color

Dimensions:
 φ250xH375mm

RD-12



Specification:
 ·Outer: warpped with PU leather
 ·Inside with powder coated metal bucket
 ·Option:2 or 3 buckets
 ·Bottom:245x245mm
 ·Color: optional, customization is provided

Dimensions:
 Length- 292mm
 Width- 292mm
 Height- 305mm

RD-13



Specification:
 ·Powder coated finishing
 ·Inside with 2 compartments for sorting garbage storage
 ·Rubber protection at base
 ·Waterproof and rust resistant
 ·Material of inner containers: polypropylene
 ·Printed with sorting guidance symbols
 ·Capacity: 10L

Dimensions:
 225 x 270mm

RD-15



Specification:
 ·Double layer
 ·Metal powder coated finishing

Dimensions:
 Length- 270mm
 Width- 210mm
 Height- 288mm

RD-17A



Specification:
 ·Double layer
 ·Inside with 2 plastic buckets
 ·Outer: stainless steel in shiny finish
 ·Material: 410 stainless steel
 ·Capcity:2 x6L
 ·Silver

Dimensions:
 Length- 275mm
 Width- 175mm
 Height- 365mm

RD-14



Specification:
 ·Double layer
 ·Outer: wrapped with PU leather
 ·Different colors and styles for leather are avaible
 ·Powder coated metalinner inserts
 ·Capacity:2X8L

Dimensions:
 Length- 295mm
 Width- 235mm
 Height- 300mm

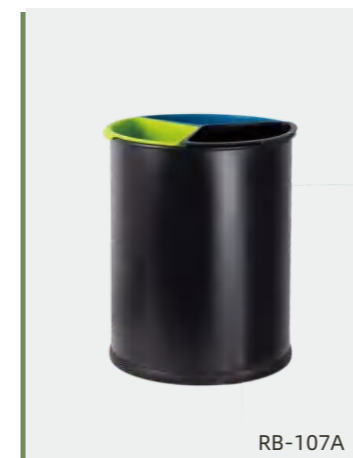
RD-17B



Specification:
 ·Double layer
 ·inside with 2 plastic buckets
 ·Metal powder coating
 ·Capcity:2 x6L
 ·Black

Dimensions:
 Length- 275mm
 Width- 175mm
 Height- 365mm

RB-107A/RB-107B



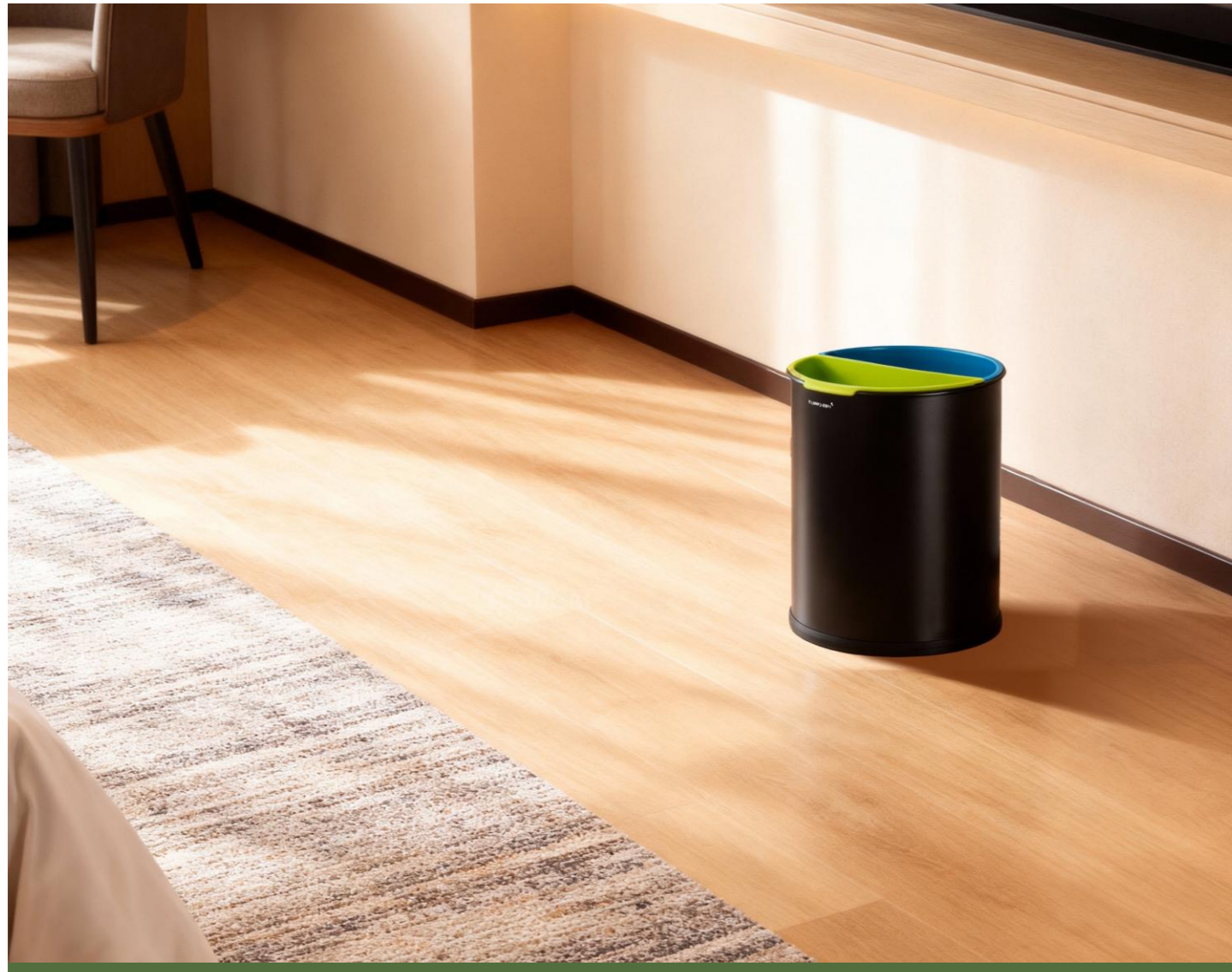
RB-107A



RB-107B

Specification:
 ·Bin with 3 compartments for sorting garbage storage
 ·Easy to clean and waterproof
 ·Metal powder coated in black color &410 stainless steel body
 ·Rubber rim at the bottom for better floor protection
 ·Unique design for sorting garbage
 ·RB-107A:Black/RB-107B:Shining

Dimensions:
 RB-107A: φ 225 x H308mm
 RB-107B: φ 225 x H308mm



RB-108A/RB-108B



Specification:
 ·With 2 compartments for sorting garbage storage
 ·Easy to clean and waterproof
 ·Metal powder coated in black color & 410 stainless steel body
 ·Rubber rim at the bottom for better floor protection

·RB-108A:Black/RB-108B:Shining

Dimensions:
 RB-108A: φ 225 x H308mm
 RB-108B: φ 225 x H308mm

WD-A1 SERIES



Specification:
 ·#410 Stainless steel material
 ·Fire safe construction design
 ·Plastic liner for easy cleaning
 ·Buffer closing device
 ·Capacity: 5L/7L/9L/12L
 ·Silver matte

Dimensions:
 5L- 235 x 185 x 260mm
 7L- 235 x 185 x 345mm
 9L- 272 x 265 x 315mm
 12L- 272 x 265 x 395mm

JF-SK



Specification:
 ·#410 Stainless Steel, durable and built to last.
 ·Fire-Safe Design, enhanced safety with fire-safe construction.
 ·Easy-Clean Liner, removable plastic liner for quick cleaning.
 ·Soft-Close Mechanism, quiet and smooth closing.
 ·Capacity: 5L/7L/8L/10L/12L

Dimensions:
 5L- 203 x H280mm
 7L- 203 x H320mm
 8L- 225 x H340mm
 10L- 250 x H340mm
 12L- 250 x H390mm

HPX-23



Specification:
 ·Pedal dust bin
 ·Buffer closing device
 ·Capacity: 7L/10L/15L/18L
 black, white, shining, mat

Dimensions:
 7L- W240 x L140 x H310mm
 10L- W240 x L140 x H350mm
 15L- W270 x L180 x H380mm
 18L- W270 x L180 x H450mm

HS-Q5



Specification:
 ·#410 Stainless steel material(0.4mm)
 ·plastic liner for easy cleaning
 ·Capacity: 5 litres

Dimensions:
 Length- 205mm
 Width- 205mm
 Height- 290mm

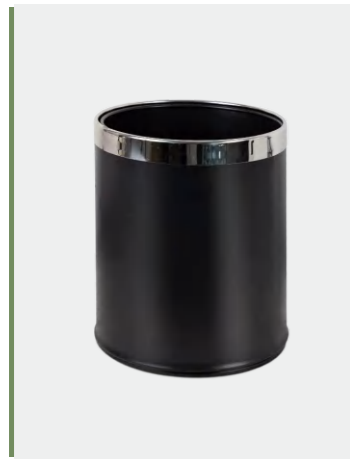
WD-ST



Specification:
 ·#410 Stainless steel material
 ·Fire safe construction design
 ·Plastic liner for easy cleaning
 ·Buffer closing device
 ·Capacity:5L/7L/8L/10L

Dimensions:
 5L- 203 x 203 x 280mm
 7L- 203 x 203 x 320mm
 8L- 225 x 225 x 340mm
 10L- 250 x 250 x 340mm

MR-01



Specification:
 ·Double layer
 ·Material: Metal + paint finish
 ·Rubber floor protection ring at the bottom
 ·Capacity: 10L
 ·Black

Dimensions:
 225 x 260mm

RB-11



Specification:
 ·Outer:wrapped with Pu leather
 ·Inner:powder coated metal bucket
 ·Top size :24x24x 30cm;
 ·Bottom size:18x18x30cm
 ·Color: optional

Dimensions:
 Width- 240mm
 Depth- 240mm
 Height- 300mm

HDX-101



Specification:
 ·Double wall to conceal the bag and hold in place
 ·Easy to clean and water repellent
 ·color: shinny, shinny black,mat black, orange
 ·Capacity:10L

Dimensions:
 225 x 300mm

GPX-110B



Specification:
 ·Material:Stainless Steel
 ·Mirror finished/Satin finished/
 Powder coating
 ·Color :Matte

Dimensions:
 380 x H730mm

HPX-22



Specification:
 ·Pedal dust bin
 ·Round shape
 ·Buffer closing device
 ·Capacity: 5L/8L/12L
 black, white, shining, mat

Dimensions:
 5L- 245 x 295mm
 8L- 265 x 295mm
 12L - 315 x 365mm

HDX-103



Specification:
 ·Double wall to conceal the bag and hold in place
 ·Rubber rim at bottom for floor protection
 ·Color: shinny, shinny black,mat black, orange
 ·Capacity: 12L

Dimensions:
 Length- 260mm
 Width- 180mm
 Height- 300mm

HDX-102



Specification:
 ·Double wall to conceal the bag and hold in place
 ·Easy to clean and water repellent
 ·Color: golden, shiny black, mat black, shining
 ·Capacity: 8L

Dimensions:
 Length- 235mm
 Width- 190mm
 Height- 330mm

HDX-105



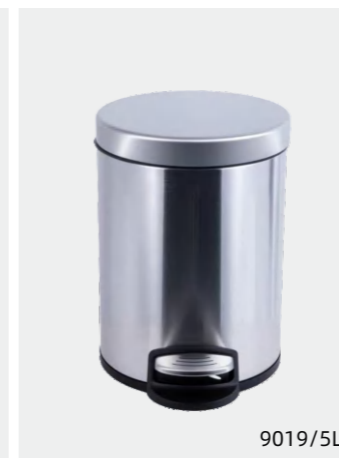
Specification:
 ·Double wall to conceal the bag and hold in place
 ·Finish: shinny, shinny black
 ·Rubber rim at bottom for floor protection

Dimensions:
 Length- 210mm
 Width- 210mm
 Height- 355mm

H-9018/H-9019/H-9020



9018/3L



9019/5L



9020/7L

Specification:
 ·Material: 410 stainless steel+ PP plastic
 ·Packing quantity: 4 pieces per carton
 ·Capacity:3L/5L/7L

Dimensions:
 H-9018/3L- W168 x H260 mm
 H-9019/5L- W203 x H282 mm
 H-9020/7L- W208 x H320 mm

A concise interface and dependable daily function support punctual routines and contribute to the room's overall ease of use.



Alarm Clock

BT 508



Features:

- V5.0
- A2DP, AVRCP, HFP, HSP
- Over 10 meters(30 feet) about 6 hours calls&music (middle volume)
- Port: AUX-in, Micro sD card, TYPE C,DC5V1A
- Capacity: DC3.7v 2000mAh
- Charging power supply: DC5V2A/9V2A
- Fast charge:support Qc3.0/QC2.0
- Output power: 5V/9V,1A==2A 10W backward compatible 5W,7.5W,10W automatic identification matching

Specification:

Black
5W
about 385 grams
Wireless Spectrum:2.402-2.480GHZ,ISM

Dimensions:

Width- 130mm, Depth- 90mm, Height- 68.5mm



Alarm Clock

BT 509



Features:

- Product size:11.4'4.5'8.7cm
- Digital Alarm Clock with Buzzer and Radio
- Alarm Sound 12 Hour Time System.
- You can choose buzzer or radio as the alarm sound
- Voltage is AC110V-220V 50-60Hz, the cable length is 1.5M,
- 2 AAA batteries for back up power

Specification:

Black

Dimensions:

Width- 430mm, Depth- 350mm, Height- 200mm





SN-0001B



Features:

- Compatibilited with multiple of mainstream switches;
- Speed dial button(+10、+5、+3、+0);
- 14 digits memory;
- Dual tones electronic ringing and volume 2 levels adjustable;
- Hand-free call volume multilevel adjustable,
- Automatic take-up function/Auto re-dial;
- Desk and wall mountable.

Specification:

Black/Beige

Dimensions:

Length- 220mm
Width- 150mm
Height- 80mm

SN-0009



Features:

- Compatibilited with multiple of mainstream switches;
- Flash time adjustable to fit for different exchange,standard flash time is 600ms.
- Dual tones electronic ringing,adjustable speaker volume;
- Hand-free call volume multilevel adjustable;
- Speed dial button(+10、+5、+3、+0);
- Automatic take-upfunction/Auto re-dial;
- 14 digits memory.

Specification:

Black/Beige

Dimensions:

Length- 234mm
Width- 170mm
Height- 80mm

SN-0005



Features:

- Compatibilited with multiple of mainstream switches;
- Speed dial button(+8、+5、+3、+0);
- 14 digits memory;
- Dual tones electronic ringing,adjustable speaker volume;
- Hand-free call volume multilevel adjustable,
- Automatic take-up function/Auto re-dial;
- Desk and wall mountable.

Specification:

Black/Beige

Dimensions:

Length- 200mm
Width- 200mm
Height- 75mm

SN-0009B



Features:

- 12 bit LcD display, actual time and date display
- Compatibilited with multiple of mainstream switches;
- Flash time adjustable to fit for different exchange,standard flash time is 600ms,
- Dual tones electronic ringing,adjustable speaker volume;
- Hand-free call volume multilevel adjustable,
- Speed dial button(+10、+5、+3、+0);
- 14 digits memory;
- Automatic take-up function/Auto re-dial.

Specification:

Black/Beige

Dimensions:

Length- 234mm
Width- 170mm
Height- 80mm

SN-0016



Features:

- Compatible with multiple of mainstream switches;
- Flash time adjustable to fit for different exchange standard flash time is 600ms.
- Dual tones electronic ringing,adjustable speaker volume;
- Hand-free call volume multilevel adjustable,
- Speed dial button(+10、 +5、 +3、 +0);
- Service key store number up to 32 bits;
- 14 digits memory;
- Automatic take-up function/Auto re-dial;

Dimensions:

Length- 173mm
Width- 128mm
Height- 134mm

SN-0018



Features:

- 12 bit LCD display, actual time and date display;
- Compatible with multiple of mainstream switches;
- Flash time adjustable to fit for different exchange,standardflashtimeis 600ms;
- Dual tones electronic ringing,adjustable speaker volume;
- Hand-free call volume multilevel adjustable,
- Speed dial button(+6、 +4、 +0);
- Service key store number up to 32 bits;
- Automatic take-up function/Auto re-dial.

Dimensions:

Length- 204mm
Width- 114mm
Height- 103mm

SN-0019



Features:

- Adjustable ringer control (High / Low)
- Hearing-aid compatible handset
- Mute function for private calls
- Flash key with 600 ms timing
- Redial last dialed number
- Wall-mounted or desktop use

Dimensions:

Length- 205mm
Width- 61mm
Height- 119mm

VOIP TELEPHONE



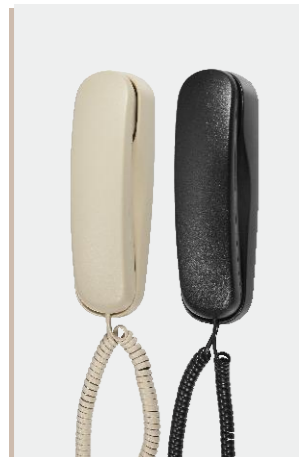
Features:

- Support 100 Megabit Ethernet -adaptive 10/100 MBPS network port,provide high-speed network transmission;
- POE power supply/adapter power supply;
- Compatible with the mainstream IP PBX/ soft switch /IMS platform based on SIP, like Asterisk,Broadsoft,3CX, Elastix,Zycoo;
- IP access:staticIp settings/DHCP/PPPo Black

Dimensions:

Length- 220mm
Width- 162mm
Height- 105mm

SN-0011



Features:

- Soft humanized ring;
- Desk or wall mountable;
- Lighting-proof,moustureproof and waterproof;

Specification:

Black/Beige

Dimensions:

Length- 210mm
Width- 60mm
Height- 65mm

SN-0012



Features:

- Efficient useful ring-coming light;
- Adjustable Ringer control;
- SOS emergency call key ;
- Lighting-proof,moustureproof and waterproof;

Specification:

Black/Beige

Dimensions:

Length- 225mm
Width- 90mm
Height- 85mm



HS604567



Specification:
 ·Stainless steel luggage rack
 ·#stainless steel with back rest
 ·Tube dia.:1.0mm
 ·less damage to the walls due to the design
 ·5 black durable straps
 ·Plastic foot cap-floor protectors
 ·Easy fold up
 ·5pcs/ctn, ctn size:62*45*72cm

 ·silver / rose golden / black

Dimensions:
 Length- 600mm
 Width- 450mm
 Height- 670mm

HS605558



Specification:
 ·Foldable wooden luggage rack
 ·Wooden luggage rack with back rest
 ·Material: rubber wood
 ·Available for black or mahogany color

Dimensions:
 Length- 600mm
 Width- 550mm
 Height- 580mm

HS604553



Specification:
 ·Stainless steel luggage rack
 ·#stainless steel without back rest
 ·Tube dia.:1.0mm
 ·less damage to the walls due to the design
 ·5 black durable straps
 ·Plastic foot cap-floor protectors
 ·Easy fold up
 ·5pcs/ctn,ctn size:62*45*55cm

 ·silver / rose golden / black

Dimensions:
 Length- 600mm
 Width- 450mm
 Height- 530mm

HS614767



Specification:
 ·Solid stainless steel luggage rack
 ·Solid stainless steel luggage rack
 ·Stainless steel
 ·Frame with back rest,
 ·Thickness:0.8MM
 ·4 black durable starps easy fold up
 ·color: Silver

Dimensions:
 Length- 610mm
 Width- 470mm
 Height- 670mm

K018A



Specification:
 ·Wooden luggage rack with back rest
 ·Material:rubber wood
 ·Available for brown color

Dimensions:
 Length- 600mm
 Width- 480mm
 Height- 670mm

HS555070/HS604251



Specification:
 ·Stainless steel luggage rack
 ·Strong metal frame, back rest for option
 ·plastic feet cap -floor protectors
 ·4 black durable straps
 ·Easy fold up
 ·color: silver

Dimensions:
HS555070
 Length- 550mm
 Width- 500mm
 Height- 700mm

Hs604251
 Length- 600mm
 Width- 420mm
 Height- 510mm

K020



Specification:
 ·Foldable wooden luggage rack
 ·Material: rubber wood
 ·Bearing:100kg
 ·Brown color

Dimensions:
 Length- 600mm
 Width- 450mm
 Height- 500mm

K015



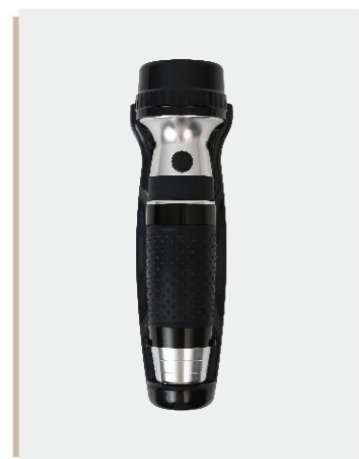
Specification:
 ·Nature color
 ·Material: rubber wood

Dimensions:
 Length- 600mm
 Width- 400mm
 Height- 580mm



FLASHLIGHT

HSF-01



Specification:
 ·Material: Aluminum alloy shell, anti-slip rubber handle
 ·Bulb type: 13 LEDS
 ·Battery: 3 AA
 ·Product weight: 325g

Dimensions:
 180x60x55mm
 (Φ45xΦ26x175 mm)

Charger



Specification:
 ·Input: AC 100~240V, 0.1A, 50~60HZ
 ·Output: DC 4.5V±0.5, 300mA MAX
 ·With charging indicator

HSF-03



Specification:
 ·Material: ABS with anti-fall rubber protection
 ·Light Source: 3 high-intensity LEDs
 ·Battery Type: 2D batteries
 ·Product Weight: 220 g

Color options :Black/red

Dimensions:
 230 x 60 x 65 mm

HSF-02



Specification:
 ·Material: ABS
 ·Light Source: 1 LED/ 6 LED
 ·Battery Type: 4 x AAA
 ·Product Weight: 80 g

Color Options: Black/Silver

Dimensions:
 135 x 40 x 38 mm

HSF-04



Specification:
 ·Bulb type: 1LED
 ·Material: Plastic
 ·Product Weight: 270g
 ·Color: Red/White/Black for option

Dimensions:
 48x54x210mm

HSF-05



Specification:
 ·Bulb type: 1LED
 ·Battery: 2*D(inside ,can not be removed)
 ·Product Weight: 270g
 ·Color: Black

Dimensions:
 48x54x210mm



L-01/L-02



Specification:
 ·Material: Aluminum+Zinc Alloy
 ·Light Bulb:E27*7W
 ·Plug: Optional
 ·220V

Dimensions:
 Short arm 250mm /360mm

L-06



Specification:
 ·Light Bulb:E27W
 ·Plug: British plug
 ·220V

Dimensions:
 Short arm 360mm /390mm



L-03



Specification:
 ·Light 5w,CT 3000K
 ·220-240V
 ·Material: Metal + Marble base
 ·Plug: British /VDE plug for option
 ·Gold/Black

Dimensions:
 180x60x600 mm

L-05



Specification:
 ·LED desk lamp
 ·LED Color:3 colors
 ·Material:Aluminum Alloy + ABS
 ·Light Source:LED
 ·Light Color:Warm White.warm
 ·Packing:24pcs
 ·Switch:Touch Switch
 ·Inner box :43.3*11.5*4cm
 ·Color: black or white for option

Dimensions:
 390x108x30 mm

WOODEN HANGER

Natural wood color/Dimensions: 445 x 20mm



S2021



S2022



S5008



S5009

Natural wood color/Dimensions: 445 x 20mm



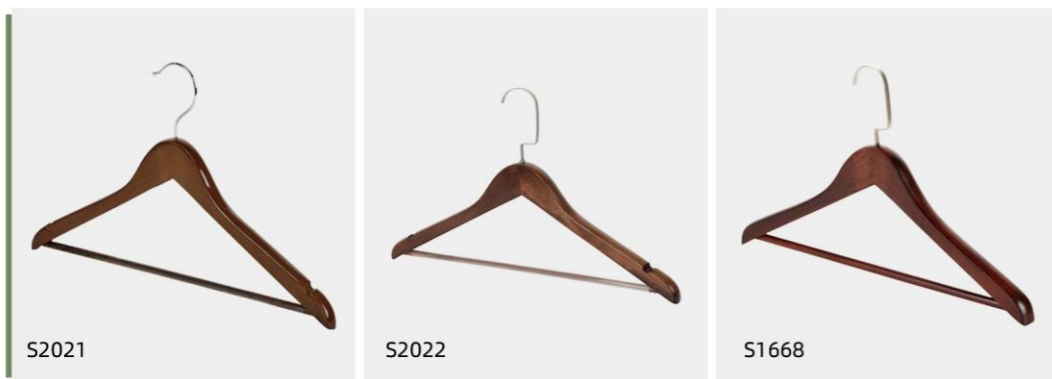
WOODEN HANGER

Natural wood color and Walnut/ Dimensions: 445 x 12mm



WOODEN HANGER

Walnut/Dimensions: 445 x 20mm

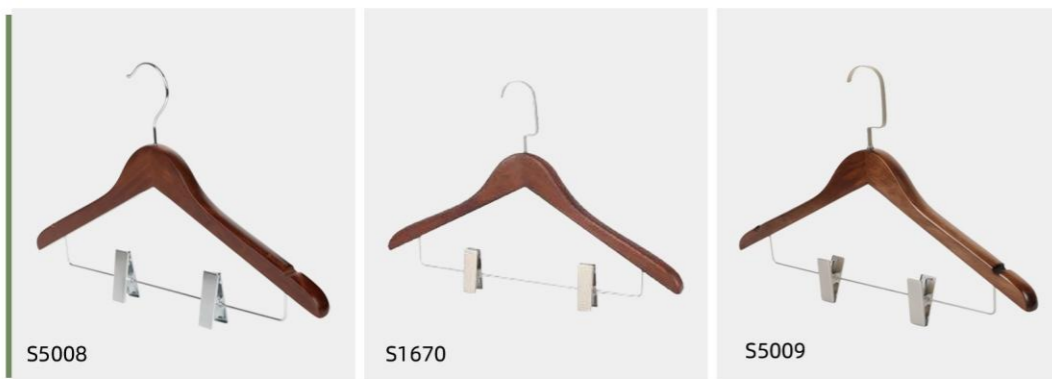


WOODEN HANGER

Dimensions: 445 x 30mm

WOODEN HANGER

Dimensions: 445 x 55mm



WOODEN HANGER

Natural wood color and Walnut/Dimensions: 445 x 45mm



WOODEN HANGER

Dimensions: 350 x 13 x 30mm

WOODEN HANGER

Dimensions: 350 x 12mm



ANTI-THEFT HANGER

Dimensions: 445 x 240 x 12mm



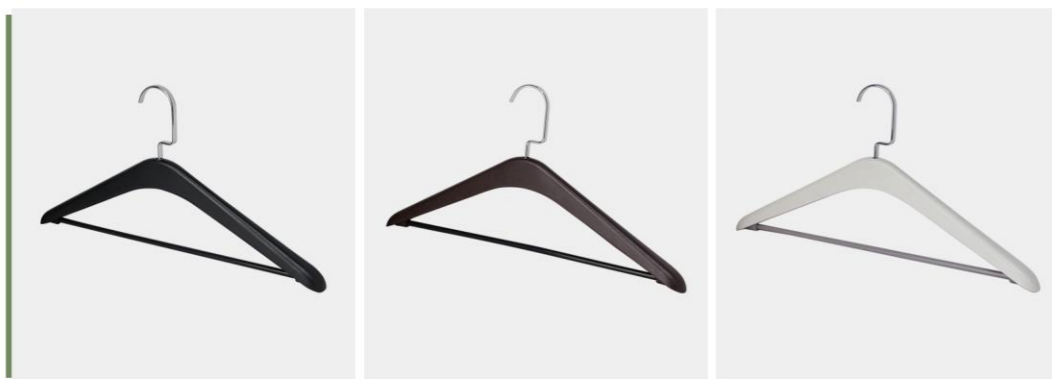
SATIN HANGER

Dimensions: 380 x 115mm

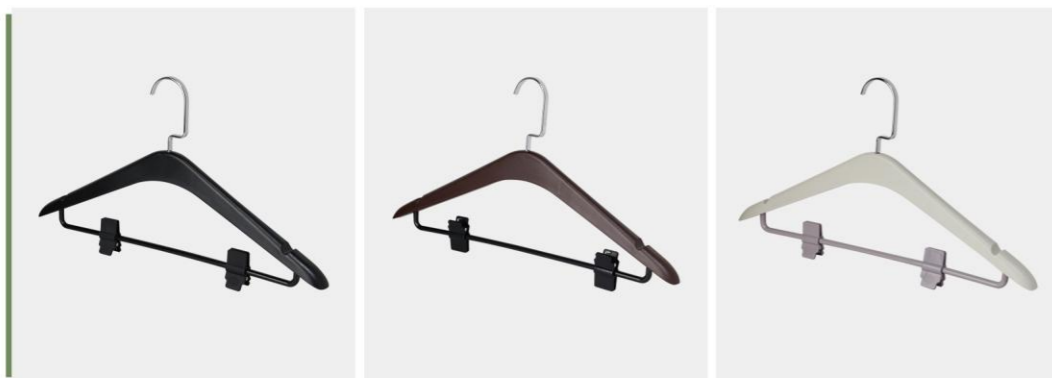


ABS HANGER

Dimensions: 440 x 220 x 30mm



Dimensions: 440 x 220 x 30mm



Clothes Brush



Description:
 ·Wooden handle with firm bristles for easy garment touch-up.
 ·Color in natural or black.

Size:
 38 cm

Shoehorn



Description:
 ·Long wooden shoehorn for easy wear, in natural or black.

Size:
 38 cm



Tissue box



Model:VS-C
Material:ABS

Dimensions:
Length- 203mm
Width- 123mm
Height- 68mm

Amenity drawer tray



Model:VS-H
Material:ABS

Dimensions:
Length- 227mm
Width- 227mm
Height- 77mm

Tissue box



Model:VS-G
Material:ABS

Dimensions:
Length- 136mm
Width- 136mm
Height- 132mm





We offer bespoke solution to make the right fits with the design of any hotel room.

ACRYLIC COLLECTION



Classic & Commercial Style

LEATHER COLLECTION



Classic & Commercial Style

LEATHER COLLECTION



Our leatherette accessory can be designed in any color & size according to the hotel designs



XL-22



Dimensions:
Length- 1100mm
Width- 650mm
Height- 1930mm

XL-23



Dimensions:
Length- 1050mm
Width- 610mm
Height- 1900mm

XL-3



Dimensions:
Length- 1100mm
Width- 650mm
Height- 1860mm

XL-4



Dimensions:
Length- 1100mm
Width- 650mm
Height- 1860mm

XL-1C



Dimensions:
Length- 1050mm
Width- 610mm
Height- 1860mm

XL-2B



Dimensions:
Length- 480mm
Width- 360mm
Height- 1200mm

XL-2



Dimensions:
Length- 480mm
Width- 360mm
Height- 1200mm

XL-6A



Dimensions:
Length- 1050mm
Width- 610mm
Height- 880mm



MC-F038



Dimensions:
Length- 1420mm
Width- 460mm
Height- 1200mm

HS-F004



Dimensions:
Length- 900mm
Width- 460mm
Height- 1050mm

C-38A



Dimensions:
Length- 1430mm
Width- 460mm
Height- 1200mm

C-82A



Dimensions:
Length- 1460mm
Width- 460mm
Height- 1200mm

C-9B



Dimensions:
Length- 950mm
Width- 600mm
Height- 900mm

C-9A



Dimensions:
Length- 920mm
Width- 560mm
Height- 910mm

C113



Dimensions:
Length- 900mm
Width- 650mm
Height- 850mm

C-43



Dimensions:
Length- 950mm
Width- 560mm
Height- 840mm



LK-7118H-2

Specification:
304 stainless steel+PC
Capacity:350ml x 2
Output :2ml
Color :Satin Finished+Clarity

Dimensions:
Length- 216mm
Width- 100mm
Height- 241mm

LK-7118H



Specification:
304 stainless steel+PC
Capacity:350ml
Output :2ml
Color :Satin Finished+Clarity

Dimensions:
Length- 122mm
Width- 100mm
Height- 241mm

LK-7118H-3



Specification:
304 stainless steel+PC
Capacity:350ml x 3
Output :2ml
Color :Satin Finished+Clarity

Dimensions:
Length- 309mm
Width- 100mm
Height- 241mm

HS-7116A



Specification:
ABS
Capacity:300ml
Ctn size: 43.5 x 37.5 x 47cm
Qty/ctn:50pcs
N.W/G.W.: 11kg/13.37kg

Dimensions:
Length- 63mm
Width- 75mm
Height- 215mm

HS-7116A-2



Specification:
ABS
Capacity:300ml x 2
Ctn size: 44.2 x 34.3 x 47cm
Qty/ctn:24pcs
N.W/G.W.: 12kg/14.1kg

Dimensions:
Length- 130mm
Width- 75mm
Height- 215mm

HS-7116B



Specification:
ABS
Capacity:300ml
Ctn size: 43.5 x 37.5 x 47cm
Qty/ctn:50pcs
N.W/G.W.: 11kg/13.37kg

Dimensions:
Length- 63mm
Width- 75mm
Height- 215mm

HS-7116B-2



Specification:
ABS
Capacity:300ml x 2
Ctn size: 44.2 x 34.3 x 47cm
Qty/ctn:24pcs
N.W/G.W.: 12kg/14.1kg

Dimensions:
Length- 130mm
Width- 75mm
Height- 215mm

LK-7901A



Specification:
ABS + PET
Capacity:300ml

Dimensions:
Length- 65mm
Width- 90mm
Height- 197mm

LK-7902A



Specification:
ABS + PET
Capacity:300ml x 2
Packing Size:55.2 x 49.5 x 40cm
Qty/ctn:40pcs
N.W/G.W.: 10.3kg/14.27kg

Dimensions:
Length- 129mm
Width- 90mm
Height- 197mm

LK-7903A



Specification:
ABS + PET
Capacity:300ml x 3
Packing Size:61.5 x 49.5 x 40cm
Qty/ctn:30pcs
N.W/G.W.: 11.5kg/15.45kg

Dimensions:
Length- 193mm
Width- 90mm
Height- 197mm

LK-7905A



Specification:
ABS + PET
Capacity:500ml
Packing Size: 10.2*7.3*22.3cm
Qty/ctn:80pcs
N.W/G.W.: 14.08kg/19.5kg

Dimensions:
Length- 68mm
Width- 96mm
Height- 212mm

LK-7906A



Specification:
ABS + PET
Capacity:500ml x 2
Packing Size:15.1*10.2*22.3cm
Qty/ctn:40pcs
N.W/G.W.: 15.1kg/19.7kg

Dimensions:
Length- 146mm
Width- 96mm
Height- 212mm

LK-7907A



Specification:
ABS + PET
Capacity:500ml x 3
Packing Size:23*10.2*22.3cm
Qty/ctn:20pcs
N.W/G.W.: 11.4kg/15.5kg

Dimensions:
Length- 225mm
Width- 96mm
Height- 212mm