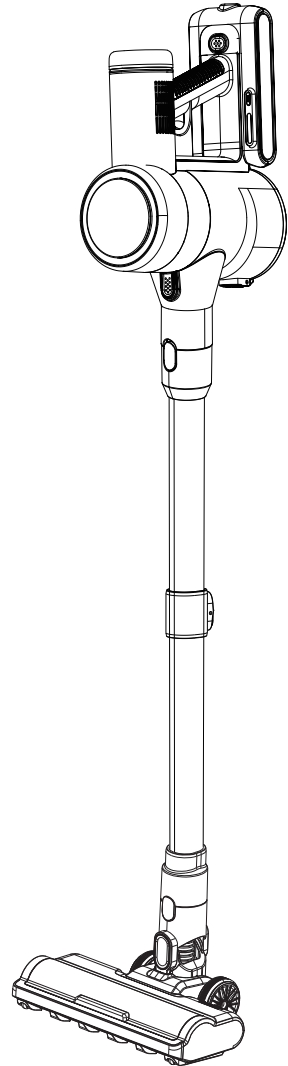


CORDLESS VACUUM CLEANER

Model: P2

- Quiet Operation
- Long-Lasting Li-ion Battery
- Easy to Use
- High Efficiency & Energy Saving



Thank you for choosing Xlife. For optimal performance and safety, please read this manual thoroughly before first use and retain for future reference. Contact our support team at support@getxlife.com for any inquiries.

Index

Safety Precautions-----	1
Package Contents -----	2
Product Components-----	3
Assembling Your Vacuum -----	4
Charging the Battery-----	5
Using Your Vacuum -----	6
Care and Maintenance-----	8,9,10,11
Technical Specifications-----	12

Safety Precautions

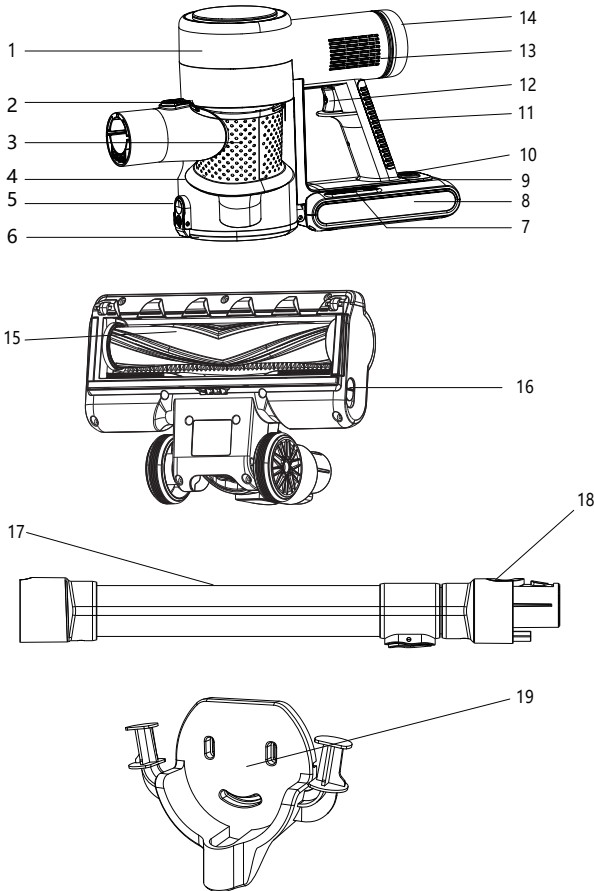
Please Read This Manual Carefully Before Operating This Machine.

- This vacuum cleaner is for dry use only. Do not use it to pick up liquids such as water or detergent, or other wet objects.
- Do not spill water or other liquids on or into the machine to prevent short circuits.
- Do not use this vacuum cleaner to pick up small particles such as flour, cement, gypsum, or plaster powder, or large objects such as toys or paper balls, as this may cause motor damage or blockages.
- Use a dry cloth to clean the machine. Do not use detergents such as gasoline or paint thinner, as they can crack or discolor the machine body.
- Do not use or store the machine in high or low temperature environments. We recommend using the machine indoors at temperatures between 0°C and 40°C (32°F and 104°F).
- Store it in a cool, shaded place. Do not expose it to direct sunlight for extended periods.
- Fully charge the battery pack before first use or after a long period of storage.
- Battery Care: To extend battery life, avoid charging or storing the battery pack in extreme temperatures (below 0°C/32°F or above 40°C/104°F). If storing the vacuum cleaner for an extended period (over three months), ensure the battery pack is charged to approximately 50-60% capacity before storage, and operate and recharge it at least once every three months.
- When fully charged, or before cleaning or maintenance, unplug the adapter. Do not pull on the power cord.
- If the operating time shortens due to reduced battery capacity, you can purchase a new battery pack.
- The old battery pack should be recycled and disposed of properly. Do not dispose of it randomly.
- The battery cells in the battery pack are only for use with this machine and should not be used for other purposes. Only recharge the battery pack with the adapter provided with the machine.
- Do not disassemble the battery pack or allow it to come into contact with liquids to prevent damage or electric shock.
- Do not place the battery pack near high-temperature objects or fire. Do not insert sharp objects into the battery pack or otherwise damage it, as this may create a hazard.
- If the machine malfunctions or if any parts are broken, do not disassemble it yourself due to potential hazards. If you encounter any issues or require assistance, please contact the seller through the Amazon platform where you purchased the product, or email us at [support@getxlife.com].
- Do not allow children to use or play with this machine or charge the battery pack to prevent potential hazards.

Package Contents

Part Name	Quantity
Main Unit	1
Extension Wand	1
Motorized Brush Head	1
2-in-1 Combination Tool	1
Crevice Tool	1
Wall Mount	1
Power Adapter	1
Instruction Manual (IM)	1
Screws for Wall Mount	3

Product Components



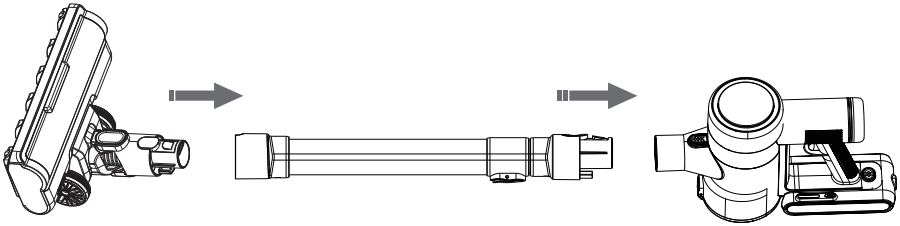
1. Main Unit
2. Release Button
(Main Unit to Dust Cup)
3. Cyclone Assembly/
Metal Filter Cone
4. Dust Cup
5. Dust Cup Release
Button (Bottom Lid)
6. Dust Cup Bottom Lid

7. Speed Control Button
8. Battery Pack
9. Charging Port
10. Battery Release Button
11. Handle
12. On/Off Trigger
13. Air Outlet Vent
14. Exhaust HEPA Filter

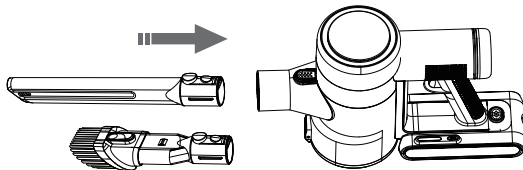
15. Soft Roller Brush
Head (Fluffy Brush)
16. Brush Head
Release Button
17. Extension Wand
18. Wand Release Button
(Main Unit to Wand)
19. Wall Mount

Assembling Your Vacuum

Attach the Extension Wand to the Main Unit: Align the extension wand with the main unit's suction inlet and push firmly until it clicks into place. Attach the Brush Head to the Extension Wand: Align the chosen brush head (e.g., Motorized Brush Head) with the end of the extension wand and push firmly until it clicks into place.



(Optional) Attach Accessories Directly to Main Unit or Wand: The Crevice Tool or 2-in-1 Combination Tool can be attached directly to the main unit (for handheld use). Push firmly until secure.



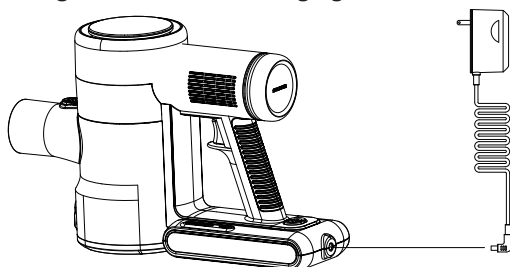
Charging the Battery

Important: Fully charge the battery pack before first use. This may take 4-5 hours.

Charging Methods:

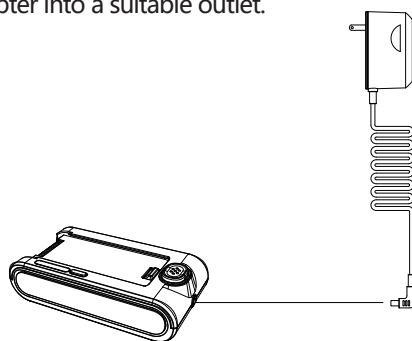
1. Charging the Main Unit Directly:

- Ensure the vacuum is turned off.
- Insert the adapter plug into the charging port on the main unit.
- Plug the power adapter into a suitable outlet.
- The battery indicator lights will show the charging status



2. Charging the Battery Pack Separately:

- Press the battery release button and remove the battery pack from the main unit.
- Insert the adapter plug directly into the charging port on the battery pack.
- Plug the power adapter into a suitable outlet.



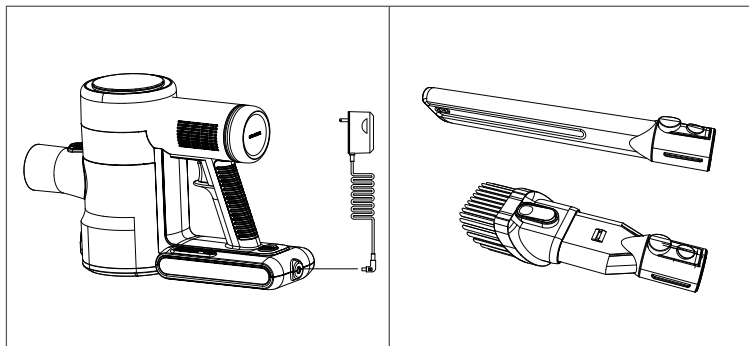
Note:

- It is normal for the adapter and battery pack to become warm during charging.
- The wall mount is for storage only and does not have a charging function. To charge, connect the adapter directly to the main unit. You can store the vacuum on the wall mount while it is charging if convenient.

Using Your Vacuum

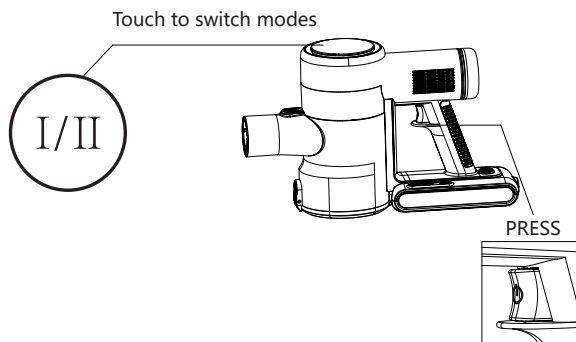
1. Preparation:

- Ensure the battery pack is sufficiently charged.
- Check that the dust cup is empty and all filters are correctly installed and clean.
- Select and attach the appropriate cleaning tool for your task.



2. Turning On/Off and Adjusting Speed:

- Pull the On/Off trigger to start the vacuum. The vacuum will typically start in the default low speed mode.
- Pull the On/Off trigger again to turn the vacuum off.
- Touch the Speed Control Button ["I/II" , on the top of the main unit]to switch between High and Low speed modes. Use Low speed for general cleaning and longer runtime; use High speed for deep cleaning or stubborn dirt.

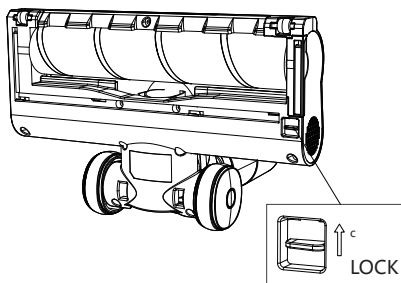


Using Your Vacuum

Accessory Tools:

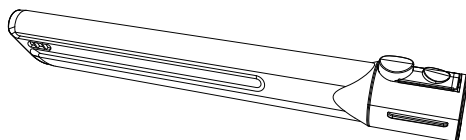
1. Motorized Brush Head / Soft Roller Brush Head:

- Ideal for cleaning carpets and hard floors.
- The brush roll agitates dirt and debris for effective pickup.



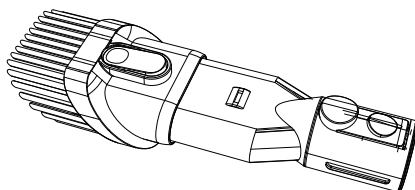
2. Crevice Tool:

- Use to clean tight spaces, corners, along edges, and between sofa cushions.



3. 2-in-1 Combination Tool:

- Brush Mode: Slide the brush down to use for dusting delicate surfaces, lampshades, curtains, keyboards, and car interiors.
- Nozzle Mode: Slide the brush up to use the wider nozzle for cleaning upholstery, mattresses, and larger debris on furniture.



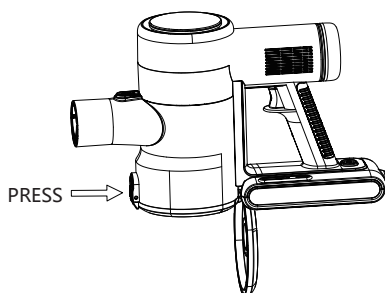
Care and Maintenance

Regular maintenance will keep your vacuum cleaner performing at its best.

Emptying the Dust Cup:

Empty the dust cup when debris reaches the MAX fill line, or sooner for optimal performance.

1. Turn off the vacuum.
2. Press the dust cup release button (bottom lid) over a dustbin to open the bottom lid. Debris will fall out.
3. Close the bottom lid securely until it clicks.



Cleaning the Main Unit:

1. Turn off the vacuum.
2. Wipe the main unit with a dry or slightly damp cloth. Do not use abrasive cleaners or solvents.
3. Do not place the main unit in direct sunlight after cleaning.

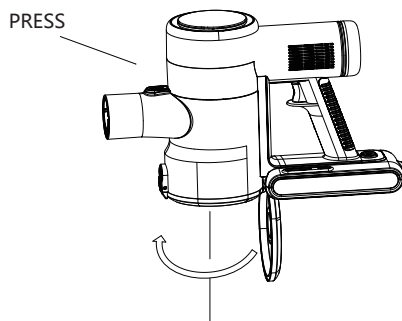
Care and Maintenance

Cleaning the Dust Cup and Filters:

For optimal performance, clean the filters regularly.

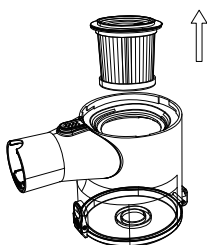
It is recommended to wash the HEPA filter (inlet) and the metal filter/cyclone assembly once a month.

1. Detach the Dust Cup: Turn off the vacuum. Twist and remove the cyclone assembly (or metal filter cone) from the dust cup (anti-clockwise direction as indicated).



2. Remove Filters:

- Remove the HEPA filter from the top of the dust cup.



3. Wash Filters:

- Wash the HEPA filter and cyclone assembly (or metal filter cone) with clean, cool water. Do not use detergents.
- Gently tap away loose dust before washing.



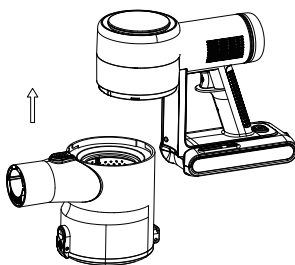
Care and Maintenance

4. Dry Filters Completely:

- Allow the HEPA filter and cyclone assembly to air dry completely for at least 24 hours before reinstalling. Do not use a hairdryer or other heat source to dry them. Ensure they are thoroughly dry to prevent damage to the vacuum.

5. Reassemble:

- Once completely dry, reassemble the cyclone assembly into the dust cup.
- Reinstall the HEPA filter.
- Attach the dust cup back to the main unit until it clicks into place.

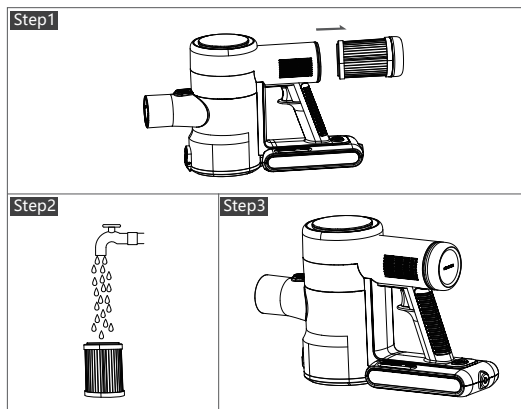


Cleaning the Exhaust HEPA Filter:

The exhaust HEPA filter helps to ensure cleaner air is expelled.

It is recommended to clean or wash the exhaust HEPA filter once a month, depending on usage.

1. Turn off the vacuum. Remove the exhaust HEPA filter from the rear (or designated location) of the main unit. (Refer to a diagram if its location isn't obvious).
2. Rinse it with clean, cool water. Do not use detergents. Allow the filter to air dry completely for at least 24 hours before reinstalling it.
3. Reinstall the filter into the main unit.



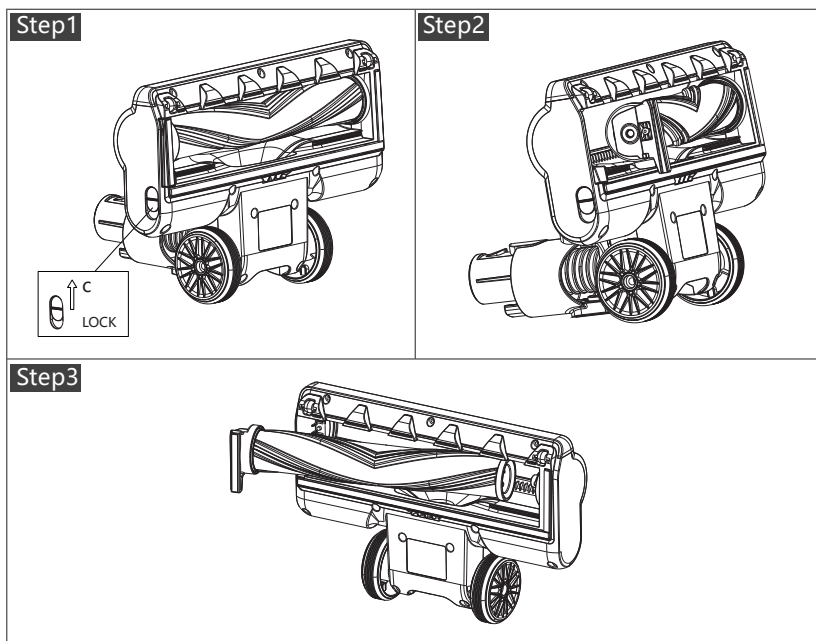
Care and Maintenance

Cleaning the Brush Roll (from the Brush Head):

Regularly check and clean the brush roll to remove tangled hair, threads, and debris.

How to take out the brush roller

1. Turn off the vacuum and detach the brush head from the extension wand.
2. On the brush head, locate and press the release button or unfasten the latch/side cap to access the brush roll.
3. Carefully lift out the brush roll.



Clean and reinstall

1. Use scissors to cut away and remove tangled hair and debris. Be careful not to damage the bristles.
2. Wipe the brush roll and its housing with a dry or slightly damp cloth.
3. Reinsert the brush roll, ensuring it is correctly aligned, and secure the cover or locking mechanism.

Technical Specifications

Feature	Specification
Model	P2
Rated Voltage	22.2V ---
Rated Power	550W
Adapter Input	100-240V~, 50/60Hz, 0.5A
Adapter Output	26.5V DC, 0.5A, 13.25W
Charging Time	Approx. 4-5 hours
Max Runtime	High Speed: ≥ 20 min Low Speed: ≥ 40 min
Dust Cup Capacity	0.6L
Noise Level	≤ 78 dB
Filtration	Multi-stage filtration including HEPA filters
Net Weight	Approx. 2.59kg (Main unit + wand + power brush)

Warranty

This product is covered by a 1-year limited warranty from the date of purchase. The warranty does not cover damage from misuse, unauthorized modifications, or failure to follow instructions. Do not attempt self-repair. Contact our support team for assistance.

Contact US

For any inquiries concerning our product, or if you want to apply for a replacement or refund, please feel free to contact us via support@getxlife.com