



HOUSE DELIVERY INFRA PACKAGES

CHOOSE THE RIGHT HOME PACKAGE TAILORED TO YOUR
LIFESTYLE AND BUDGET.



URBAN X - ₹1,750

STRUCTURE

Steel - Rana| Rathi - Fe550

Cement - JK | Shree | Ambuja | Birla of 43 or 53 grade

Aggregates - 20mm & 40mm

Blocks / Red Bricks- Red Brick (Awwal)9inch & 4 inch

RCC Design Mix - M20 or M25 or As per the structural designer recommendation

Ceiling Height - 10 feet (Finished Floor level to Finished Floor level)

KITCHEN

Ceramic Wall Dado - Upto Rs.40 per Sqft

Main Sink Faucet - Upto Rs.1300

Any other Faucet or Accessories - ISI Marked

Kitchen Sink - Stainless Steel of Single Sink make worth Rs. 3,000

BATHROOM

Ceramic Wall Dado - Upto Rs.40 per Sqft

Sanitarywares & CP fittings upto Rs. 30,000 per 1000 Sqft of Hindware /Simpolo make

CPVC Pipe - Supreme /Astral

Bathroom doors - Waterproof flush doors or WPC



DOOR & WINDOWS

Windows - Aluminium Windows with glass shutters and mesh shutters (3 track with 1 mesh)

Main Door - Flush Board with Veneer. Sal wood frame of 5 inch by 3 inch, worth Rs.15,000 including fixtures.

Internal Doors - Membrane doors / Flush Door with Laminates upto Rs.8,000 including fixtures. Door Frames of Sal Wood 4 inch by 2.5 inch.

PAINTING

Interior Painting - JK Putty + Tractor Emulsion

Exterior Painting - Asian Primer + Ace Exterior emulsion Paint

FLOORING

Living & Dining Flooring - Tiles of value upto Rs.40 per sqft

Rooms & Kitchen Flooring - Tiles of value upto Rs.40 per sqft

Balcony and Open Areas Flooring - Anti-skid tiles of value upto Rs.40 per sqft

Staircase Flooring - Sadarahalli Granite of value upto ₹ 65 per sqft

Parking Tiles - Anti-skid tiles of value upto ₹ 40 per sqft



ELECTRICAL

All wiring shall be done with fire proof wires of Finolex | Polycab
Switches & Sockets - Anchor Ziva

MISCELLANECIOUS

A Sintex/apollo Double Layered Overhead Tank of 500Ltr / shall be Provided by per 1000sqft.Any Additional Capacity be chargeable at INR 5 per L. Platform for the OHT shall be charged additional based on the Design and Specifications
Staircase & Balcony Railing – MS Railing (withh enamel paint of 200Rs/ Sqft)



NEOSPACE ₹1,995

STRUCTURE

Steel - Rana Rathi - Fe550

Cement - JK | Shree | Ambuja | Birla of 43 or 53 grade

Aggregates - 20mm & 40mm

Blocks - Standard Red Bricks. 9 inch & 4 inch

RCC Design Mix M25 or As per the structural designer recommendation

Ceiling Height - 10 feet (Finished Floor level to Finished Floor level)

KITCHEN

Ceramic Wall Dado - Upto Rs.50 per Sqft

Main Sink Faucet - Upto Rs.2100

Any other Faucet or Accessories - ISI Marked

Kitchen Sink - Stainless Steel of Single Sink make worth Rs. 5,000.

BATHROOM

Ceramic Wall Dado - Upto Rs.50 per Sqft

Sanitarywares & CP fittings upto Rs. 50,000 per 1000 Sqft of Parryware make

CPVC Pipe - Astral | Ashirwad

Bathroom doors - Waterproof flush doors or WPC



DOOR & WINDOWS

Windows - UPVC Windows with glass and mesh shutters (3 track with 1 mesh) of ISI Marked

Main Door - Flush Board With Teak frame of 5 inch by 3 inch, worth Rs.20,000 including fixtures.

Internal Doors - Membrane doors / Flush Door with **Laminates** upto Rs.9,000 including fixtures. Door Frames of Sal Wood 4 inch by 2.5 inch.

PAINTING

Interior Painting - JK Putty + Tractor Shyne Emulsion

Exterior Painting - Asian Primer + Apex Exterior Emulsion Paint

FLOORING

Living & Dining Flooring - Tiles or Granite of value upto Rs.60 per sqft

Rooms & Kitchen Flooring - Tiles of value upto Rs.60 per sqft

Balcony and Open Areas Flooring - Anti-skid tiles of value upto Rs.50 per sqft

Staircase Flooring - Sadarahalli Granite of value upto ₹ 70 per sqft

Parking Tiles - Anti-skid tiles of value upto ₹ 50 per sqft



ELECTRICAL

All wiring shall be done with fire proof wires of Finolex | Anchor

Switches & Sockets - Roma | Havells Fabio
UPS Wiring Provision

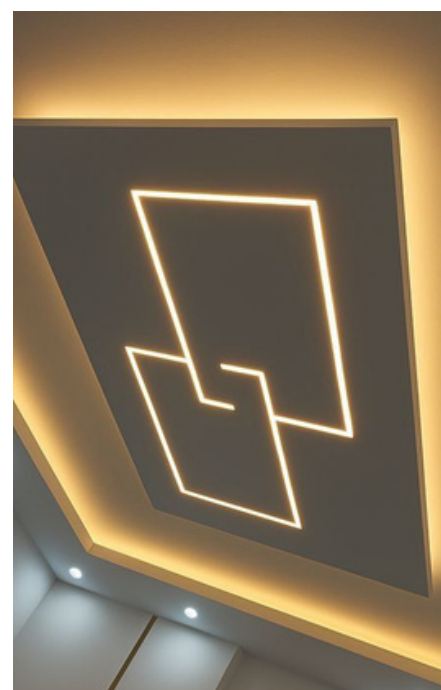
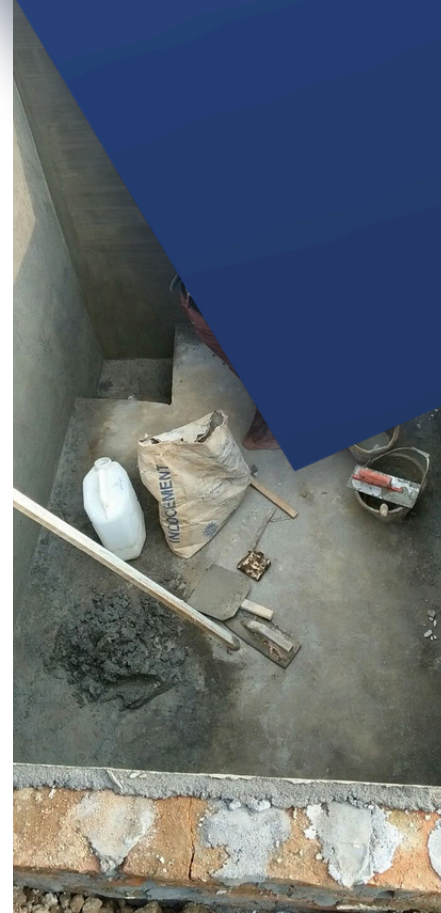
MISCELLANECIOUS

ISI Marked Overhead Tank of -5000 Rs / (1000sqft) shall be Provided by per dwelling unit Any Additional Capacity be chargeable at INR 6 per L. Platform for the OHT shall be charged additional based on the Design and Specifications.

Underground sump -5000Ltrs.

Staircase & Balcony Railing – MS (Apollo / ISI Marked)

False Ceiling is considered in this package (300sqft / 1000sqft)



HYPER LIVING ₹2598

STRUCTURE

Steel - TATA

Cement - ACC | Ultratech of 43 or 53 grade

Aggregates - 20mm & 40mm

Blocks - Standard Red Bricks. 9 inch & 4 inch

RCC Design Mix - ACC or Ultratech M25 or As per the structural designer recommendation

Ceiling Height - 11 feet (Finished Floor level to Finished Floor level)

KITCHEN

Ceramic Wall Dado - Upto Rs.70 per Sqft

Main Sink Faucet - Upto Rs.3000

Any other Faucet or Accessories - Parryware / Hindware / Jaquar

Kitchen Sink of Stainless Steel or granite Finish worth Rs. 8000.

BATHROOM

Ceramic Wall Dado upto 7' height - Upto Rs.70.

Sanitarywares & CP fittings upto Rs. 66,000 per 1000 Sqft of Jaquar make.

CPVC Pipe - Astral | Ashirwad.

Bathroom doors - Waterproof flush doors or WPC.

Mirror, Soap Dish, Towel Rail.

Solar water heater provision

www.housedelivery.in



DOOR & WINDOWS

Windows - UPVC Windows with glass and mesh shutters (3 track with 1 mesh) of Prominace make

Main Door - Teak Door With Teak frame of 5 inch by 3.5 inch, worth Rs.40,000 including fixtures.

Internal Doors - Membrane doors / Flush Door with Laminates upto upto Rs.10,500 including fixtures. Door Frames of Sal Wood 4 inch by 3 inch.

1 Pooja Room Door - worth Rs. 10,000 for every 2,500 sft package area

PAINTING

Interior Painting - JK Putty + Apcolite Premium Emulsion

Exterior Painting - Asian Primer + Apex Exterior Emulsion Paint

FLOORING

Living & Dining Flooring - Tiles or Granite or Marble of value upto Rs.100 per sqft

Rooms & Kitchen Flooring - Tiles or Granite or Marble of value upto Rs.100 per sqft

Balcony and Open Areas Flooring - Anti-skid tiles of value upto Rs. 70 per sqft

Staircase Flooring - Sadarahalli Granite of value upto ₹ 100 per sqft

Parking Tiles - Anti-skid tiles of value upto ₹ 70 per sqft



ELECTRICAL

All wiring shall be done with fire proof wires of Finolex | Anchor | Havells

Switches & Sockets - Legrand mylinc | Havells Coral | Roma

UPS Wiring Provision

MISCELLANECIOUS

A Sintex/apollo Double Layered Overhead Tank of -1000L shall be Provided by per 1000 sqft Any Additional Capacity be chargeable at INR 9 per L. Platform for the OHT shall be charged additional based on the Design and Specifications

Underground sump -6000 Ltr

Staircase & Balcony Railing – SS(Stainless) with Glass of SS 304 Profiles

AC copper Conducting is provide in Covered Area

Interior - 2 Wardrobes, 1 Modular Kitchen, 1 TV Cabinet & False Ceiling excluding bathrooms are considered in this package (for additional Rs. 350 Rs/Sqft)

Note : Kitchen 8x10 sqft, 2 Wardrobe of 6x8sqft, False Ceiling 500sqft and 1TV cabinet of 6x7 is considered for 1000 sqft of Area



WHY HOUSEDELIVERY.IN



10 Reasons to Choose Housedelivery.in

1. **100% Transparent Pricing** – Unlike others, we provide a clear package-wise cost breakup per sq.ft. with no hidden charges. You know exactly where your money goes.
2. **On-Site Quality Control with SnagBot** – Our proprietary SnagBot system ensures real-time checks at every stage (concrete ratio, steel placement, finishing quality). No other player offers this level of accountability.
3. **Premium Material Wallets, Your Choice** – We allocate brand wallets for tiles, sanitary, CP fittings, and wardrobes, giving you the power to choose the design/brand without overshooting budget.
4. **Dedicated Project Manager** – Every customer gets a single point of contact for end-to-end execution. No miscommunication, no running after contractors.
5. **Assured Timeline Delivery** – With structured project planning and stage-based tracking, we guarantee on-time handover — backed with penalty clauses if delayed.
6. **Superior Structural Strength** – We follow IS codes, provide structural engineer-approved RCC design mixes (M20, M25, M30), and use branded steel & cement — ensuring long-term durability.
7. **Custom Lifestyle Packages** – From UrbanX (Smart Budget Homes) to NeoSpace (Premium Homes) to HyperLiving (Luxury Homes), we offer tailored packages for every lifestyle & budget — something competitors rarely customise.
8. **15+ Quality Checkpoints per Stage** – From soil excavation to finishing, we document photos, videos & reports — so you stay updated without visiting site daily.
9. **Integrated Interiors** – Unlike most competitors who stop at “grey structure”, we include wardrobes, modular kitchen, false ceiling, TV units, designer finishes — giving you a complete move-in ready home.
10. **Origin Based + Tech Advantage** – While others are either only tech-driven or only local, we combine local on-ground expertise + tech-enabled tracking to deliver trust, speed, and quality.

SUPPORT SYSTEM



PROJECT MANAGER

Your Project Manager is your single point of contact who ensures everything runs smoothly — from planning to execution. They manage budgets, timelines, and coordination so you can relax while your dream home takes shape.



SITE ENGINEER

The Site Engineer is the backbone of on-ground work, present daily to supervise labour, check material quality, and ensure construction strictly follows drawings and standards. Their vigilance guarantees that what's promised on paper is delivered on site.



SNAG BOT

SnagBot is our advanced quality assurance system that inspects every stage of construction, from steel and concrete mix to finishing details. It creates a transparent audit trail so you know your home is being built with zero compromise.

ONBOARDING & DESIGN FINALIZATION

The journey begins with a detailed consultation where we understand your requirements, budget, and lifestyle. Based on this, we help you choose the right package, finalize the floor plan, structural drawings, and approvals — ensuring complete clarity before the first brick is laid.

FOUNDATION & STRUCTURE

Once the design is approved, construction begins with excavation, foundation work, RCC, and structural framework. At this stage, we focus on strength and durability, using branded steel, cement, and engineer-certified RCC mixes, while our Site Engineer and SnagBot oversee quality at every step.

FINISHING & INTERIORS

After the structure is complete, we move to walls, plaster, flooring, electrical, plumbing, painting, and installation of fittings. Modular kitchens, wardrobes, false ceilings, and other interior works are executed as per your chosen wallet, giving your home the look and feel you desire.



QUALITY CHECK & KEY HANDOVER

Before delivery, a final quality inspection is conducted covering every detail — from fittings to finishes — with a SnagBot report shared for transparency. Once everything meets our promise and your expectations, we hand over the keys to your ready-to-move-in dream home.

“FROM DESIGN TO DELIVERY, OUR PROCESS IS BUILT ON TRANSPARENCY, QUALITY, AND TIMELY EXECUTION — SO ALL YOU HAVE TO DO IS MOVE IN AND START LIVING YOUR DREAM.”

“Every month you delay, material prices rise and timelines stretch — but when you book with Housedelivery.in today, we lock your cost, your timeline, and your dream. Secure your home now and let us take care of everything else.”

CONTACT US



+91-8810371396
+91-8920471251



info@housedelivery.in
housedelivery.in@gmail.com



@housedelivery.in



www.housedelivery.in