

**HOUSE**  
DELIVERY.IN

 /housedelivery.in

# HOUSEDELIVERY.IN PACKAGES

CHOOSE THE RIGHT HOME PACKAGE TAILORED TO YOUR  
LIFESTYLE AND BUDGET.



[WWW.HOUSEDELIVERY.IN](http://WWW.HOUSEDELIVERY.IN)

## URBAN X - ₹1,640

### STRUCTURE

**Steel** - Rathi | Rathi - Fe550 D

**Cement** - Shree | Ambuja | JK | Birla of 43 or 53 grade

**Aggregates** - 20mm & 40mm

**Blocks / Red Bricks** - Standard Solid Concrete blocks.  
6 inch & 4 inch

**RCC Design Mix** - M20 or As per the structural  
designer recommendation

**Ceiling Height** - 10 feet (Finished Floor level to  
Finished Floor level)

### KITCHEN

**Ceramic Wall Dado** - Upto Rs.40 per Sqft

**Main Sink Faucet** - Upto Rs.1300

**Any other Faucet or Accessories** - ISI Marked

**Kitchen Sink** - Stainless Steel of Single Sink make  
worth Rs. 3,000



### BATHROOM

**Ceramic Wall Dado upto 7' height** - Upto Rs.40 per  
Sqft

**Sanitarywares & CP fittings** upto Rs. 30,000 per  
1000 Sqft of Hindware make

**CPVC Pipe** - Supreme or Equivalent

**Bathroom doors** - Waterproof flush doors or WPC



## DOOR & WINDOWS

**Windows** - Aluminium Windows with glass shutters and mesh shutters (3 track with 1 mesh)

**Main Door** - Flush Door with Veneer. Sal wood frame of 5 inch by 3 inch, worth Rs.20,000 including fixtures.

**Internal Doors** - Membrane doors / Flush Door with Laminates upto Rs.7,000 including fixtures. Door Frames of Sal Wood 4 inch by 2.5 inch.

## PAINTING

**Interior Painting** - JK Putty + Tractor Emulsion

**Exterior Painting** - Asian Primer + Ace Exterior emulsion Paint

## FLOORING

**Living & Dining Flooring** - Tiles of value upto Rs.40 per sqft

**Rooms & Kitchen Flooring** - Tiles of value upto Rs.40 per sqft

**Balcony and Open Areas Flooring** - Anti-skid tiles of value upto Rs.40 per sqft

**Staircase Flooring** - Sadarahalli Granite of value upto ₹ 60 per sqft

**Parking Tiles** - Anti-skid tiles of value upto ₹ 40 per sqft





## ELECTRICAL

**All wiring** shall be done with fire proof wires of  
Finolex | Polycab

**Switches & Sockets** - Anchor Ziva

## MISCELLANECIOUS

**A Sintex/apollo Double Layered** Overhead Tank of -1000L  
shall be Provided by per dwelling unit Any Additional  
Capacity be chargeable at INR 9 per L. Platform for the OHT  
shall be charged additional based on the Design and  
Specifications

**Underground sump** -4000Ltrs

**Staircase & Balcony Railling** – MS from  
AC copper Conducting is provide in Covered Area





## NEOSPACE ₹1,860

### STRUCTURE

**Steel** - JSW Neosteel | SAIL | Vizag

**Cement** - Shree | Ambuja | JK | Birla of 43 or 53 grade

**Aggregates** - 20mm & 40mm

**Blocks** - Standard Red Bricks. 9 inch & 4 inch

**RCC Design Mix** M25 or As per the structural designer recommendation

**Ceiling Height** - 10 feet (Finished Floor level to Finished Floor level)

### KITCHEN

**Ceramic Wall Dado** - Upto Rs.60 per Sqft

**Main Sink Faucet** - Upto Rs.2100

**Any other Faucet or Accessories** - ISI Marked

**Kitchen Sink** - Stainless Steel of Single Sink make worth Rs. 5,500

### BATHROOM

**Ceramic Wall Dado upto 7' height** - Upto Rs.50 per Sqft

**Sanitarywares & CP fittings** upto Rs. 52,000 per 1000 Sqft of Parryware make

**CPVC Pipe** - Astral | Ashirwad

**Bathroom doors** - Waterproof flush doors or WPC



## DOOR & WINDOWS

**Windows** - UPVC Windows with glass and mesh shutters (3 track with 1 mesh) of Nexia | Lesso eiti

**Main Door** - Teak Door With Teak frame of 5 inch by 3 inch, worth Rs.30,000 including fixtures.

**Internal Doors** - Membrane doors / Flush Door with **Laminates** upto Rs.9,000 including fixtures. Door Frames of Sal Wood 4 inch by 2.5 inch.

## PAINTING

**Interior Painting** - JK Putty + Tractor Shyne Emulsion

**Exterior Painting** - Asian Primer + Apex Exterior Emulsion Paint

## FLOORING

**Living & Dining Flooring** - Tiles or Granite of value upto Rs.80 per sqft

**Rooms & Kitchen Flooring** - Tiles of value upto Rs.50 per sqft

**Balcony and Open Areas Flooring** - Anti-skid tiles of value upto Rs.50 per sqft

**Staircase Flooring** - Sadarahalli Granite of value upto ₹ 80 per sqft

**Parking Tiles** - Anti-skid tiles of value upto ₹ 50 per sqft



## ELECTRICAL

**All wiring** shall be done with fire proof wires of  
Finolex | Anchor | Havells

**Switches & Sockets** - Roma | Havells Fabio  
UPS Wiring Provision

## MISCELLANECIOUS

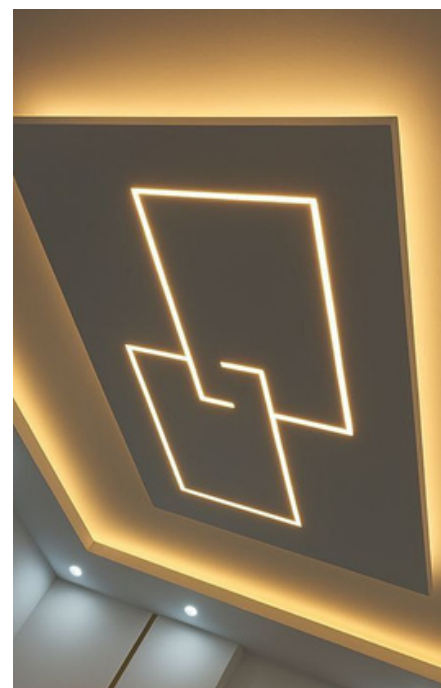
**A Sintex/apollo Double Layered** Overhead Tank of -1500L  
shall be Provided by per dwelling unit Any Additional  
Capacity be chargeable at INR 9 per L. Platform for the OHT  
shall be charged additional based on the Design and  
Specifications

**Underground sump** -5000Ltrs

**Staircase & Balcony Railing** – SS(Stainless ) of SS 304 Profiles

**AC copper Conducting** is provide in Covered Area

**False Ceiling** is considered in this package excluding  
bathrooms





## HYPER LIVING ₹2474

### STRUCTURE

**Steel** - TATA

**Cement** - ACC | Ultratech of 43 or 53 grade

**Aggregates** - 20mm & 40mm

**Blocks** - Standard Red Bricks. 9 inch & 4 inch

**RCC Design Mix** - ACC or Ultratech M25 or As per the structural designer recommendation

**Ceiling Height** - 10.5 feet (Finished Floor level to Finished Floor level)

### KITCHEN

**Ceramic Wall Dado** - Upto Rs.70 per Sqft

**Main Sink Faucet** - Upto Rs.3500

**Any other Faucet or Accessories** - Parryware / Hindware / Jaquar

**Kitchen Sink** of Stainless Steel or granite Finish worth Rs. 8,000

### BATHROOM

**Ceramic Wall Dado** upto 7' height - Upto Rs.70 per Sqft

**Sanitarywares & CP fittings** upto Rs. 66,000 per 1000 Sqft of Jaquar make

**CPVC Pipe** - Astral | Ashirwad

**Bathroom doors** - Waterproof flush doors or WPC

Mirror, Soap Dish, Towel Rail

**Solar water** heater provision

[www.housedelivery.in](http://www.housedelivery.in)



## DOOR & WINDOWS

**Windows** - UPVC Windows with glass and mesh shutters (3 track with 1 mesh) of Prominence make

**Main Door** - Teak Door With Teak frame of 5 inch by 3.5 inch, worth Rs.40,000 including fixtures.

**Internal Doors** - Membrane doors / Flush Door with Laminates upto upto Rs.10,500 including fixtures. Door Frames of Sal Wood 4 inch by 3 inch.

**1 Pooja Room Door** - Burma Teak along with Teak frame of 5inch by 2.5 inch, worth Rs. 20,000 for every 2,000 sqft package area

## PAINTING

**Interior Painting** - JK Putty + Apcolite Premium Emulsion

**Exterior Painting** - Asian Primer + Apex Exterior Emulsion Paint

## FLOORING

**Living & Dining Flooring** - Tiles or Granite or Marble of value upto Rs.120 per sqft

**Rooms & Kitchen Flooring** - Tiles or Granite or Marble of value upto Rs.100 per sqft

**Balcony and Open Areas Flooring** - Anti-skid tiles of value upto Rs. 60 per sqft

**Staircase Flooring** - Sadarahalli Granite of value upto ₹ 100 per sqft

**Parking Tiles** - Anti-skid tiles of value upto ₹ 60 per sqft



## ELECTRICAL

**All wiring** shall be done with fire proof wires of  
Finolex | Anchor | Havells

**Switches & Sockets** - Legrand mylinc | Havells Coral |  
Roma  
UPS Wiring Provision

## MISCELLANECIOUS

**A Sintex/apollo** Double Layered Overhead Tank of -2000L  
shall be Provided by per dwelling unit Any Additional  
Capacity be chargeable at INR 9 per L. Platform for the OHT  
shall be charged additional based on the Design and  
Specifications

**Underground sump** -6000 Ltr

**Staircase & Balcony Railing** – SS(Stainless ) with Glass of SS  
304 Profiles

**AC copper** Conducting is provide in Covered Area

**Interior** - 2 Wardrobes, 1 Modular Kitchen, 1 TV Cabinet &  
False Ceiling excluding bathrooms are considered in this  
package ( Wallet 4 Lakhs )





# WHY HOUSEDelivery.IN



## 10 Reasons to Choose Housedelivery.in

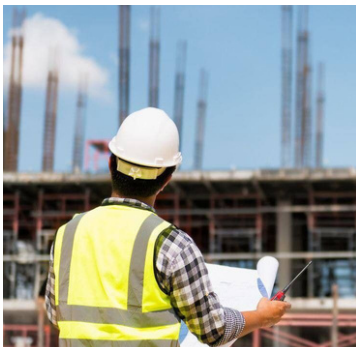
1. **100% Transparent Pricing** – Unlike others, we provide a clear package-wise cost breakup per sq.ft. with no hidden charges. You know exactly where your money goes.
2. **On-Site Quality Control with SnagBot** – Our proprietary SnagBot system ensures real-time checks at every stage (concrete ratio, steel placement, finishing quality). No other player offers this level of accountability.
3. **Premium Material Wallets, Your Choice** – We allocate brand wallets for tiles, sanitary, CP fittings, and wardrobes, giving you the power to choose the design/brand without overshooting budget.
4. **Dedicated Project Manager** – Every customer gets a single point of contact for end-to-end execution. No miscommunication, no running after contractors.
5. **Assured Timeline Delivery** – With structured project planning and stage-based tracking, we guarantee on-time handover — backed with penalty clauses if delayed.
6. **Superior Structural Strength** – We follow IS codes, provide structural engineer-approved RCC design mixes (M20, M25, M30), and use branded steel & cement — ensuring long-term durability.
7. **Custom Lifestyle Packages** – From UrbanX (Smart Budget Homes) to NeoSpace (Premium Homes) to HyperLiving (Luxury Homes), we offer tailored packages for every lifestyle & budget — something competitors rarely customise.
8. **15+ Quality Checkpoints per Stage** – From soil excavation to finishing, we document photos, videos & reports — so you stay updated without visiting site daily.
9. **Integrated Interiors** – Unlike most competitors who stop at “grey structure”, we include wardrobes, modular kitchen, false ceiling, TV units, designer finishes — giving you a complete move-in ready home.
10. **Origin Based + Tech Advantage** – While others are either only tech-driven or only local, we combine local on-ground expertise + tech-enabled tracking to deliver trust, speed, and quality.

# SUPPORT SYSTEM



## PROJECT MANAGER

Your Project Manager is your single point of contact who ensures everything runs smoothly — from planning to execution. They manage budgets, timelines, and coordination so you can relax while your dream home takes shape.



## SITE ENGINEER

The Site Engineer is the backbone of on-ground work, present daily to supervise labour, check material quality, and ensure construction strictly follows drawings and standards. Their vigilance guarantees that what's promised on paper is delivered on site.



## SNAG BOT

SnagBot is our advanced quality assurance system that inspects every stage of construction, from steel and concrete mix to finishing details. It creates a transparent audit trail so you know your home is being built with zero compromise.

## ONBOARDING & DESIGN FINALIZATION

The journey begins with a detailed consultation where we understand your requirements, budget, and lifestyle. Based on this, we help you choose the right package, finalize the floor plan, structural drawings, and approvals — ensuring complete clarity before the first brick is laid.

## FOUNDATION & STRUCTURE

Once the design is approved, construction begins with excavation, foundation work, RCC, and structural framework. At this stage, we focus on strength and durability, using branded steel, cement, and engineer-certified RCC mixes, while our Site Engineer and SnagBot oversee quality at every step.

## FINISHING & INTERIORS

After the structure is complete, we move to walls, plaster, flooring, electrical, plumbing, painting, and installation of fittings. Modular kitchens, wardrobes, false ceilings, and other interior works are executed as per your chosen wallet, giving your home the look and feel you desire.



## QUALITY CHECK & KEY HANDOVER

Before delivery, a final quality inspection is conducted covering every detail — from fittings to finishes — with a SnagBot report shared for transparency. Once everything meets our promise and your expectations, we hand over the keys to your ready-to-move-in dream home.

**“FROM DESIGN TO DELIVERY, OUR PROCESS IS BUILT ON TRANSPARENCY, QUALITY, AND TIMELY EXECUTION — SO ALL YOU HAVE TO DO IS MOVE IN AND START LIVING YOUR DREAM.”**



**“Every month you delay, material prices rise and timelines stretch — but when you book with Housedelivery.in today, we lock your cost, your timeline, and your dream. Secure your home now and let us take care of everything else.”**

## **CONTACT US**



+91-8810371396  
+91-8920471251



info@housedelivery.in  
housedelivery.in@gmail.com



@housedelivery.in



www.housedelivery.in