

# Commercial Proposal

MarineTraffic Enterprise Plan



# MarineTraffic WebApp

The most trusted Ship Tracking solution

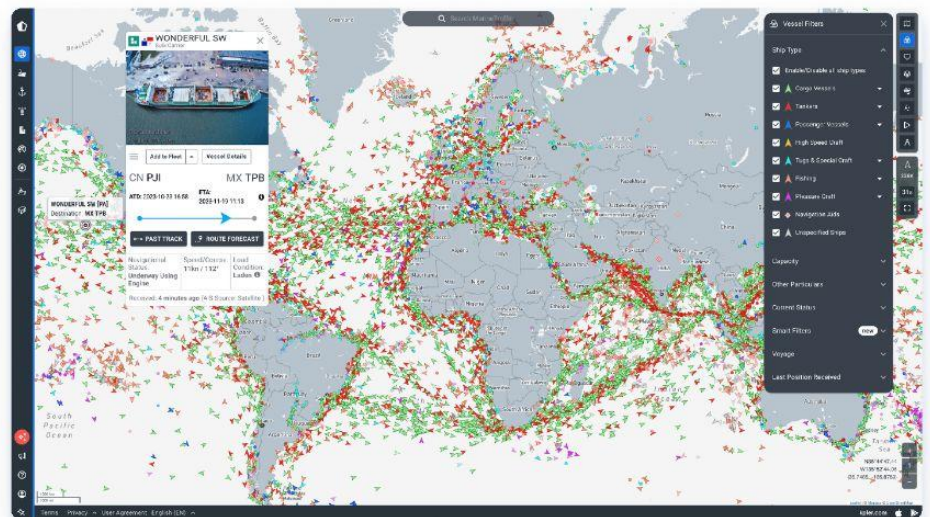
**7x more  
AIS positions**  
captured each day  
than our competitors

**400k+**  
ships tracked per day

**6,600+**  
AIS stations globally

**13+ years**  
historical data

**1 billion+**  
AIS messages  
received per day



## AIS

The most accurate ship tracking data

Access real-time ship tracking data through the user-friendly MarineTraffic map for improved operations. With over 6,600 AIS receivers along the coast, in the ocean and in space, our network is capturing AIS transmissions 24/7.

## Vessel details

Comprehensive data at your fingertips

Explore vessel details, including technical specifications, classification, dimensions, and capacity. Discover similar vessels and detailed information about ownership, management, and insurer details, all conveniently accessible through a single WebApp.

## Precise port insights

Port analytics and congestion matters

Access vital port data, upcoming arrivals, departures and terminal information. Discover nearby companies. Analyse congestion, waiting times to evaluate port efficiency. Explore lighthouse locations and imagery.

## Popular routes & weather

The way to navigate maritime safely

Ensure vessel and crew safety with weather updates. Customise global ship traffic views along port-to-port routes. Utilise density maps for an overview of the most popular sea routes. Visualise the vessel's past track. Avoid overcrowded or hazardous routes to save time and reduce costs.



## Enterprise

### Notes

Make, save and edit your notes



### Voyage Data

View expected arrivals for vessels headed to a given port

All

See all port calls made over the last

last 365 days

Historical positions for vessels the last

last 5 years

Destination port and vessel reported expected time of arrival, vessel load condition



Origin port, actual time of departure



Average and max voyage speed



Distance travelled and distance to go



Time underway and idle time



Wind angle, speed and temperature



Last timestamp when vessel was underway



Route forecast and expected time of arrival at each waypoint



Calculated expected time of arrival at destination port



Route tool with ETA



### Global AIS

The capacity to track vessels as they make cross-ocean voyages by combining coastal, satellite, and roaming AIS data sources

Unlimited

### Vessel Particulars

(Technical vessel details allowing the identification and validation of specifications on potential clients and candidate vessels)

Basic vessel characteristics (IMO, Gross Tonnage)



Information on vessel ownership, management company details, including country, town, address, email



List view of similar vessels (on Vessel Details page)







Classification society	✓
Type, market and class	✓
Vessel dimensions and min/max draught	✓
Capacity details in GT, DWT, TEU, CBM	✓
Build year and launch date	✓
Country	✓
Shipyard	✓
First received AIS position	✓
Monthly Data Export Allowance in rows	10000

## Notifications

(Receive updates on the movements of vessel(s) and fleet(s) in areas or ports relevant<sup>1</sup> to you)

Notification Credits Allowance	Unlimited
Noon and/or midnight positions of vessels	✓
Speed alerts	✓
Course Alteration alerts	✓
Stoppage alerts	✓
Draft or Destination change information	✓
Vessel to Vessel Proximity alerts	✓

## Fleet

(Group and track your vessel)

Total number of vessels you can track in your fleets	2000 vessels
Easily group and visualise your vessels on the Live Map and get an overview of their current status in your custom dashboards	✓

## Vessel Events

(View historical records for over 20 distinct vessel events; including berth calls, changes to ETA, destination or draught)



Access historical records of events from the last

5 years

Noon and midnight positions	<input checked="" type="checkbox"/>
Changes in status, including from underway to stopped	<input checked="" type="checkbox"/>
Updates to ETA and destination	<input checked="" type="checkbox"/>
Change of course	<input checked="" type="checkbox"/>
Name or Flag changed	<input checked="" type="checkbox"/>
Change of draught	<input checked="" type="checkbox"/>
Docking and undocking at berth	<input checked="" type="checkbox"/>
Entering or leaving Piracy areas	<input checked="" type="checkbox"/>
Entering or leaving standard geographic areas, or when crossing of straits or ECA zones	<input checked="" type="checkbox"/>
Entering, leaving or crossing custom areas and lines	<input checked="" type="checkbox"/>
Being in close proximity to another vessel in open sea	<input checked="" type="checkbox"/>
First and last ever position received by the vessel	<input checked="" type="checkbox"/>
Vessel changed timezone	<input checked="" type="checkbox"/>

## Live Map Filtering

(View the Live Map in your own way and choose which vessels you see)

Filter Live Map view by vessel: generic type, status (Underway, Anchored only)	<input checked="" type="checkbox"/>
Filter Live Map view by vessel: type, status, destination, origin, capacity or load condition	<input checked="" type="checkbox"/>
Capacity (GRT, DWT, TEU and Liquid Gas volume) filter	<input checked="" type="checkbox"/>
Year of build, LOA and Flag filter	<input checked="" type="checkbox"/>
Load condition filter	<input checked="" type="checkbox"/>
Destination or departure port filter	<input checked="" type="checkbox"/>
Age of the last received position filter	<input checked="" type="checkbox"/>



## Enterprise

Access more layers, such as ECA, Daylight and Timezones, giving you improved situational awareness



Full screen Map functionality



Map auto-refresh



Customisable vessel icons



Daylight layer



Timezones layer



ECA zones layer



Piracy Zones



JWC War Areas



Exclusive Economic Zones



Traffic Separation Schemes



Load Lines



Offshore Wind Farms



NAVAREAs



### Playback

(See animated replays of vessel movements)

Replay vessel movements from the last

**5 years**

### Nautical Charts

(Detailed charts of navigable waters, with bathymetry, landmarks and sea hazards)

Locations of berths, dry docks, terminals and more, within ports



Positions and characteristics of buoys, lights, lighthouses



Pilotage information such as sea bed, sea marks and landmarks as well as depths of water and heights of land



### Custom Areas

Create unlimited Custom Areas to closely monitor all the marine activity

**2000**



## Port Congestion

Figures and trends of port congestion for 1 year in the past



## Density Maps

Visualise global shipping patterns, by vessel type

