



Investor Fact Sheet

<http://www.VichCapital.com/> | Lior@VichCapital.com | (424) 362-5577

About

Specializing in transforming stock market volatility into opportunities through a carefully managed portfolio of VIX-based products.

Our Approach

- Strategy leverages market volatility, refined over a decade, targeting a 15% annual gross return
- Consistent returns through a disciplined methodology and proprietary model
- Long/short approach to optimize performance in varying market conditions
- Commitment to safety, clarity, and investor trust
- Minimize costs to maximize investor returns
- Frequent liquidity ensuring flexibility and accessibility for investors
- Disciplined risk management using market data, sentiment, and liquidity monitoring

Key Facts

- We invest alongside our clients
- Emphasis on steady, long-term growth
- Full operational and performance transparency
- Third-party fund administrator
- Proactively updated on legal changes

Terms

- Accredited Investors Only
- Minimum Investment: \$100,000
- Lock-Up Period: None
- Open-Ended Fund
- Fees: 0% Management ; 20% Performance (HWM)
- Securities: Regulation D - 506(c)

Performance Snapshot

Gross Performance Figures – Jan 2019 – Mar 2026

236.31%
Cumulative
Return

~19%
Annual
Average

~1.5%
Monthly
Average

~83%
Win
Rate

+47%
VS
S&P 500

Return on \$100,000 Investment

Starting Value Current Value
\$100,000 → **\$336,306**

+236.31% Growth | Jan 2019 – Mar 2026

Quarterly Gross Performance (%)

	Q1	Q2	Q3	Q4	YTD
2026	-0.31				
2025	4.03	4.02	5.37	5.69	20.5
2024	3.74	6.95	2.18	8.77	23.32
2023	5.22	9.07	2.97	5.47	24.64
2022	3.14	2.72	0.86	7.85	15.25
2021	11.12	4.70	4.52	6.45	29.44
2020	-27.01	5.50	15.52	20.75	7.41
2019	4.46	2.05	3.83	2.70	13.67

Our Team 30+ years of combined experience.



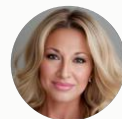
LIOR MOSCOVICH
CEO and Founder



NADAV SELLA
Chief Investment Strategist



JAKE TITAL
Strategic Partnerships &
Operations Advisor



ANNMARIE MOSCOVICH
Director of Investor
Relations and Marketing

Partners

Interactive Brokers · PSBP Law · NAV Fund Administration · Dime Bank

Disclaimer: This material is provided for informational purposes only and does not constitute an offer, solicitation, or recommendation to buy or sell any securities or investment products. Any such offer will be made solely through definitive offering documents, including the Private Placement Memorandum (PPM), Limited Partnership Agreement (LPA), and Subscription Agreement. This material is intended exclusively for accredited investors as defined under Regulation D of the Securities Act of 1933, including Rule 506(c). Past performance is not indicative of future results. All investments involve risk, including the possible loss of principal. Any performance data presented is gross of fees and expenses and does not reflect management fees, performance allocations, or fund-level expenses. Performance results are derived from the founder's personal trading account and are expected to be traded in a substantially similar manner and strategy once the fund is fully operational. Information contained herein is obtained from sources believed to be reliable, including Interactive Brokers, but its accuracy and completeness are not guaranteed.